

TERMS OF USE: The Mapping Section's goal is to provide the most accurate and current information possible. Map data is compiled from numerous sources with varying degrees of accuracy and may not reflect the most current information. The Mapping Section is not responsible for any errors or omissions that may appear on this map. This information is provided for informational purposes only and should not be used as a legal document. The information shown on this map was updated in April 2024.

COPIES OF THIS MAP ARE AVAILABLE TO THE PUBLIC AT NO CHARGE. CONTACT US TO ORDER: (704) 287-3333 OR VISIT OUR WEBSITE: www.ncdot.gov

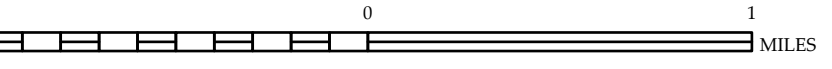


LEGEND

- INTERSTATE (I-85)
- U.S. NUMBERED HIGHWAY (US-70)
- STATE NUMBERED HIGHWAY (NC-100)
- UNPAVED ROAD
- PROFESSIONALLY ENGINEERED ROAD
- PROPOSED ROAD
- INTERESTED PARTY EASEMENT
- STANDARD ROAD BRIDGE
- RAILROAD BRIDGE
- WOODEN BRIDGE
- PRESTRESS BRIDGE
- PRESTRESS OVERPASS
- VEHICLE UNDERPASS
- TUNNEL
- CULVERT
- PIVOT
- INTERSTATE HIGHWAY
- U.S. NUMBERED HIGHWAY
- STATE NUMBERED HIGHWAY
- STATE NUMBERED BI-CYCLE ROUTE
- STATE NUMBERED BI-CYCLE ROUTE
- INTERSTATE ENTRANCE NUMBER
- STATE ENTRANCE NUMBER
- UTILITY LINE
- RAILROAD LINE
- RAILROAD CROSSING
- INSE AREA
- STATE LINE
- COUNTY LINE
- UNPAVED ROAD BOUNDARIES
- CITY LIMITS
- TOWNSHIP BOUNDARIES
- FERRY ROUTE AND DAM
- NATIONAL FOREST OR STREAM
- WATER BARRIER
- RESERVOIR, POND, LAKE, W. ISLAND
- DAM OR DAM WITH LOCK
- WATERFALL
- SNAG
- COURTNEY
- CITY/TELE
- SCHOOL
- HOSPITAL OR UNIVERSITY
- COAST GUARD STATION
- CHURCH
- CHEBI WITH CEMETERY
- CEMETERY
- PARKING STATION
- CORRECTION OR PSYCH. INSTITUTION
- GAZEBO
- SHED OR PIT
- INDUSTRIAL YARD OR MAINT. YARD
- HIGHWAY DIV. OR DIST. OFFICE
- MILEAGE POST
- WEIR
- FAIRBANKS
- HISTORICAL SITE
- PROTECTED INTEREST
- POST OFFICE
- STATE FOREST
- LANDFILL
- MOUNTAIN SUMMIT
- MINERAL SPRING
- OVERLOOK
- REST AREA
- VISITOR CENTER AREA
- WELCOME CENTER AREA
- ADVISORY
- MILITARY AIRPORT
- NATIONAL STATE FOREST BOUNDARY
- WILDLIFE REFUGE
- NATIONAL STATE PARK BOUNDARY
- GAME LANDS BOUNDARY
- MILITARY RESERVATION BOUNDARY
- INDIAN RESERVATION BOUNDARY

BUNCOMBE COUNTY
NORTH CAROLINA

PREPARED BY THE
NORTH CAROLINA DEPARTMENT OF TRANSPORTATION
OPERATIONS PROGRAM MANAGEMENT UNIT - MAPPING SECTION
IN COOPERATION WITH THE
U.S. DEPARTMENT OF TRANSPORTATION
FEDERAL HIGHWAY ADMINISTRATION
SCALE



NORTH CAROLINA PLANE COORDINATE SYSTEM
LAMBERT CONFORMAL CONIC PROJECTION

