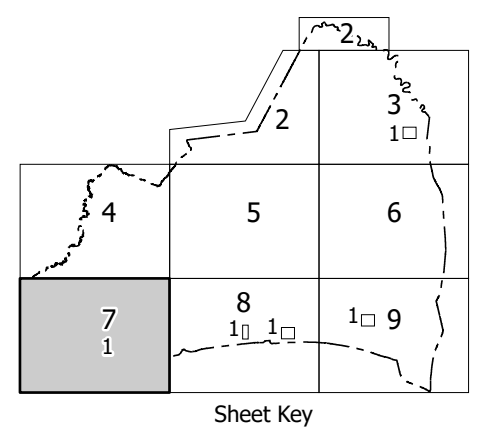
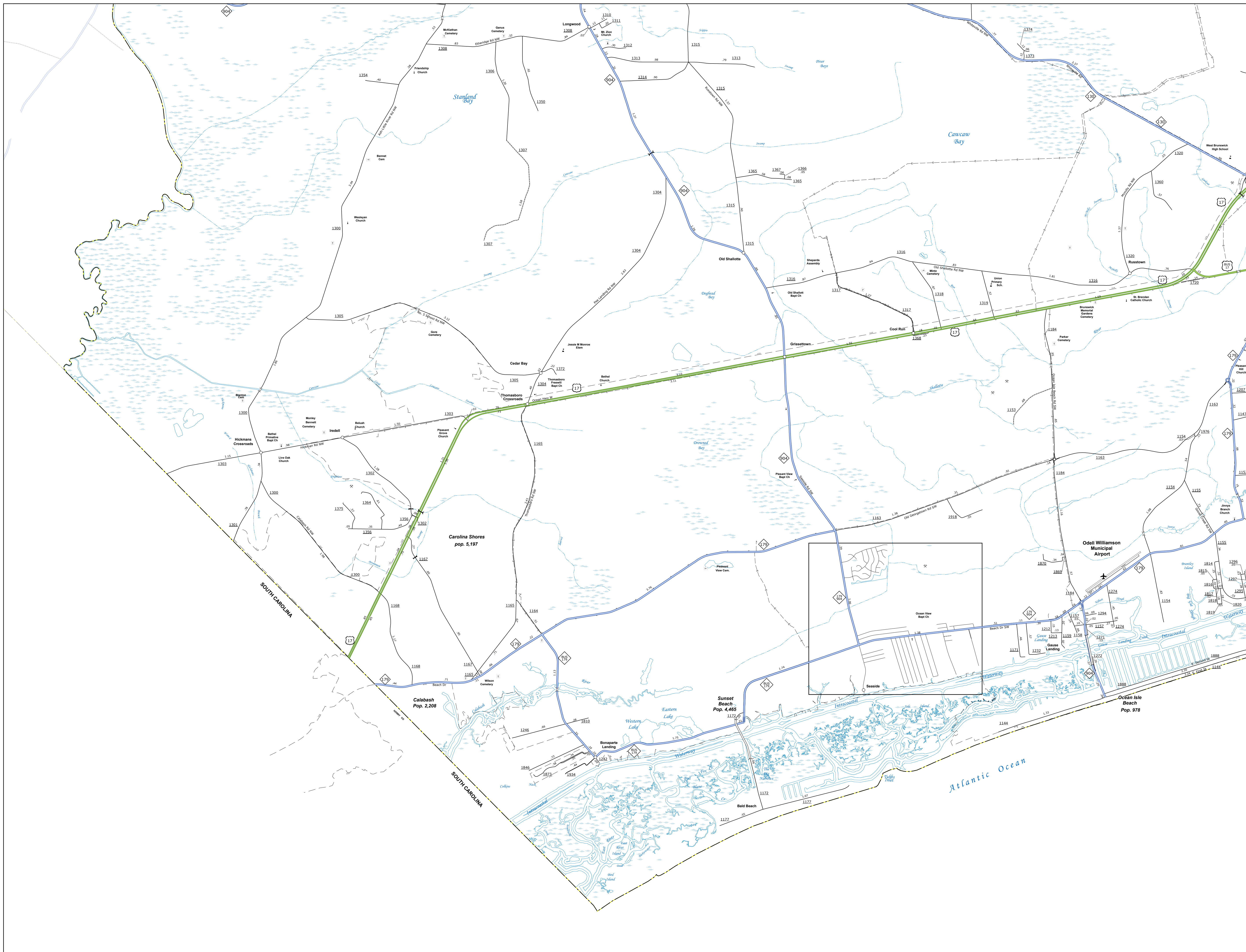


TERMS OF USE: This map is provided as a reference only. It is not intended to be used for legal purposes. The information shown on this map is for informational purposes only. The user assumes all responsibility for any errors or omissions. This map is not a warranty, representation, or agreement of any kind. The information shown on this map is for informational purposes only. The user assumes all responsibility for any errors or omissions. This map is not a warranty, representation, or agreement of any kind.

DATE OF PUBLICATION: 10/15/2024
 PUBLICATION CODE: 10/15/2024
 PROJECT CODE: 10/15/2024

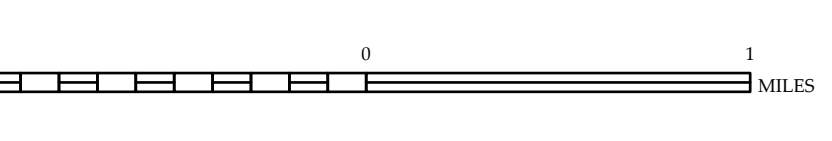


- LEGEND**
- INTERSTATE US NC
 - US NUMBERED HIGHWAY
 - US NUMBERED HIGHWAY
 - US NUMBERED BI-CYCLE ROUTE
 - INTERSTATE BI-CYCLE ROUTE
 - STATE LINE
 - COUNTY LINE
 - UNINCORPORATED TOWN BOUNDARIES
 - CITY LIMITS
 - UNINCORPORATED TOWN AND RAMP
 - WIDE RIVER OR CREEK
 - RESERVOIR, POND OR LAKE W/ ISLAND
 - DAM OR DAM WITH LOCK
 - WATERFALL
 - SHOAR
 - COMBENEY
 - COUNTY SEAT
 - CITY
 - COLLEGE OR UNIVERSITY
 - HOSPITAL
 - COAST GUARD STATION
 - CHURCH
 - CHURCH WITH CEMETERY
 - CEMETERY
 - POWERS STATION
 - CORRECTION OR PENAL INSTITUTION
 - GAZARD
 - REST OR PTE
 - BIOPHY GARDEN OR MANT. YARD
 - HIGHWAY DIV. OR DIST. OFFICE
 - MILITARY POST
 - FIRE STATION
 - FABRICATIONS
 - RESERVOIR SITE
 - POINTS OF INTEREST
 - POST OFFICE
 - STATE FOREST
 - UNINCORPORATED TOWN
 - MOUNTAIN SUMMIT
 - MOUNTAIN GAP
 - OVERLOOK
 - REST AREA
 - WELCOME TO REST AREA
 - AIRPORT
 - MILITARY AIRPORT
 - NATIONAL STATE FOREST BOUNDARY
 - WILDLIFE REFUGE
 - NATIONAL STATE PARK BOUNDARY
 - GAME LANDS BOUNDARY
 - MILITARY RESERVATION BOUNDARY
 - DISARM RESERVATION BOUNDARY



**BRUNSWICK COUNTY
 NORTH CAROLINA**

PREPARED BY THE
 NORTH CAROLINA DEPARTMENT OF TRANSPORTATION
 OPERATIONS PROGRAM MANAGEMENT UNIT - MAPPING SECTION
 IN COOPERATION WITH THE
 U.S. DEPARTMENT OF TRANSPORTATION
 FEDERAL HIGHWAY ADMINISTRATION



NORTH CAROLINA PLANE COORDINATE SYSTEM
 LAMBERT CONFORMAL CONIC PROJECTION