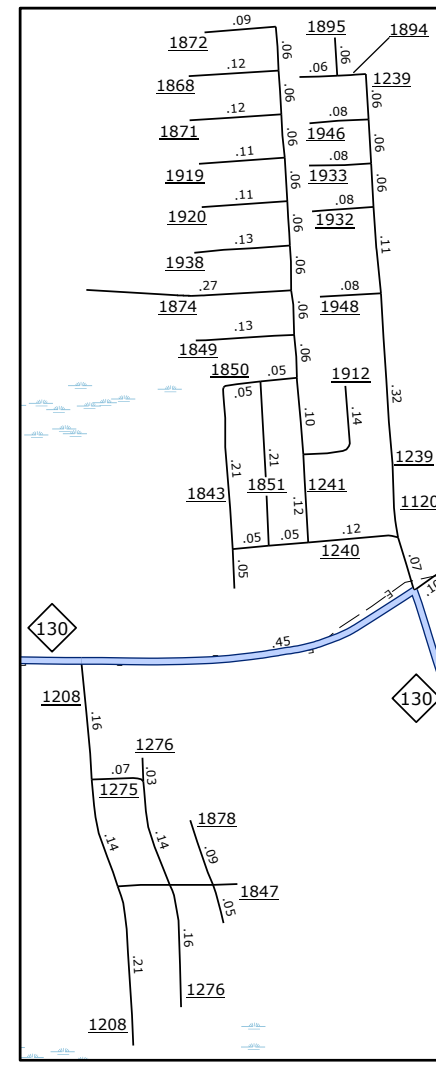
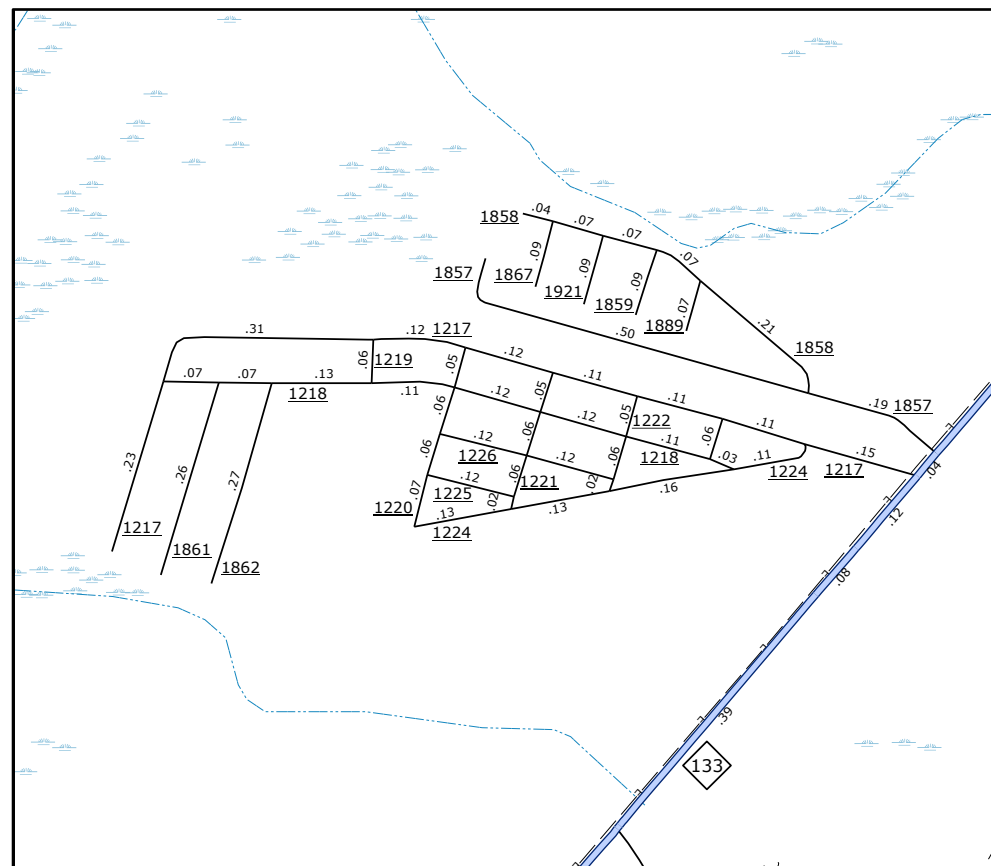


Seaside

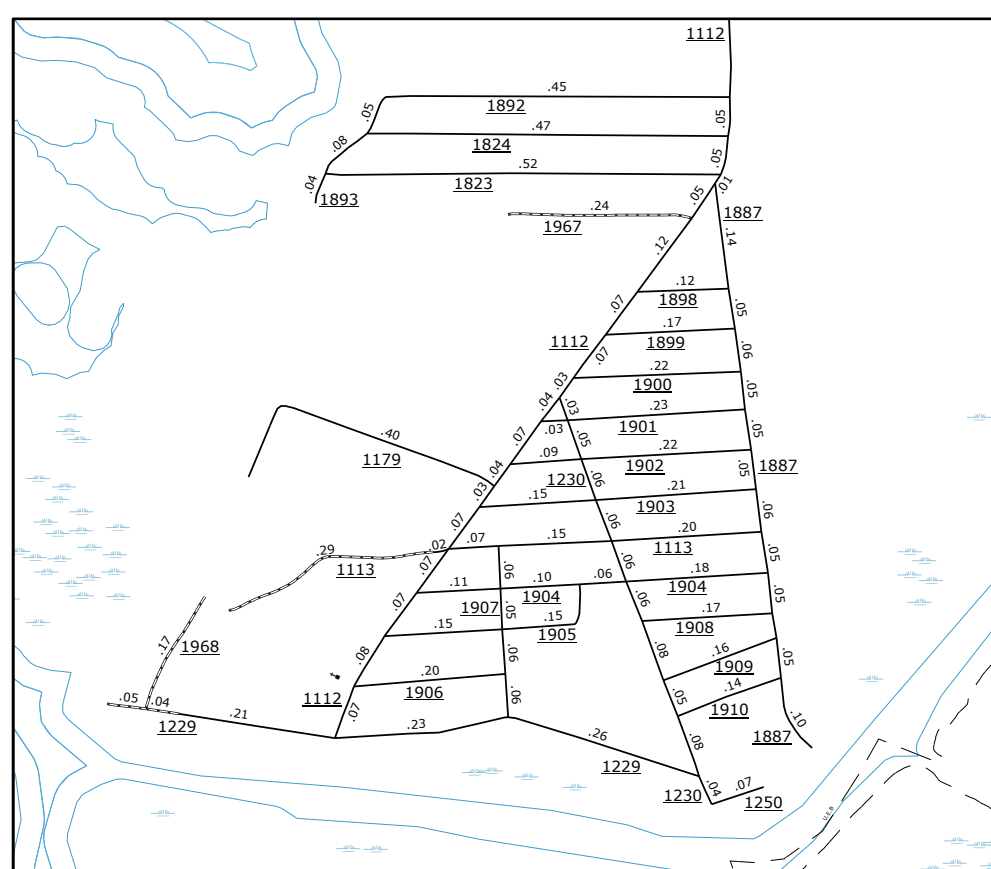
Ocean View Ave



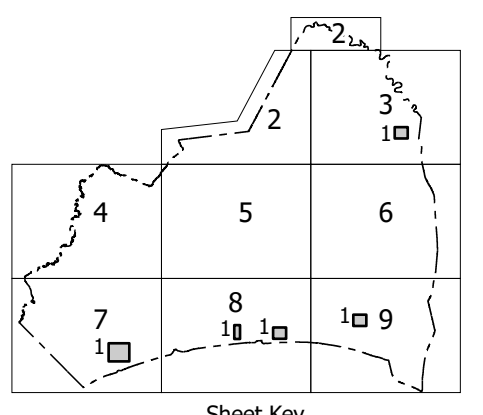
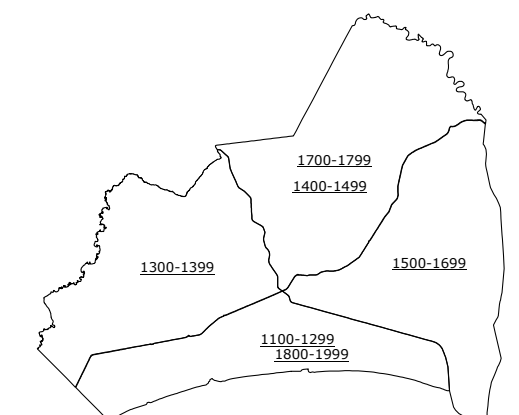
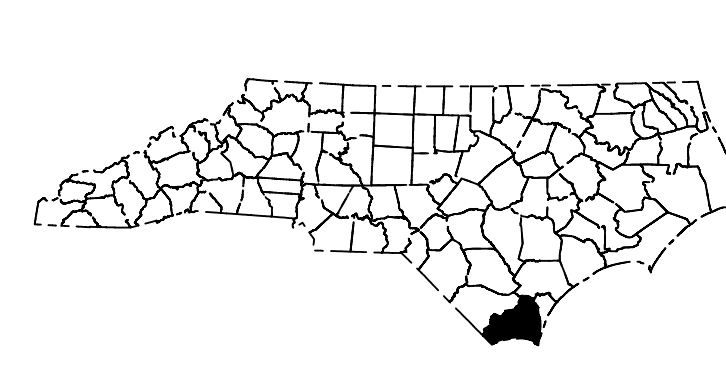
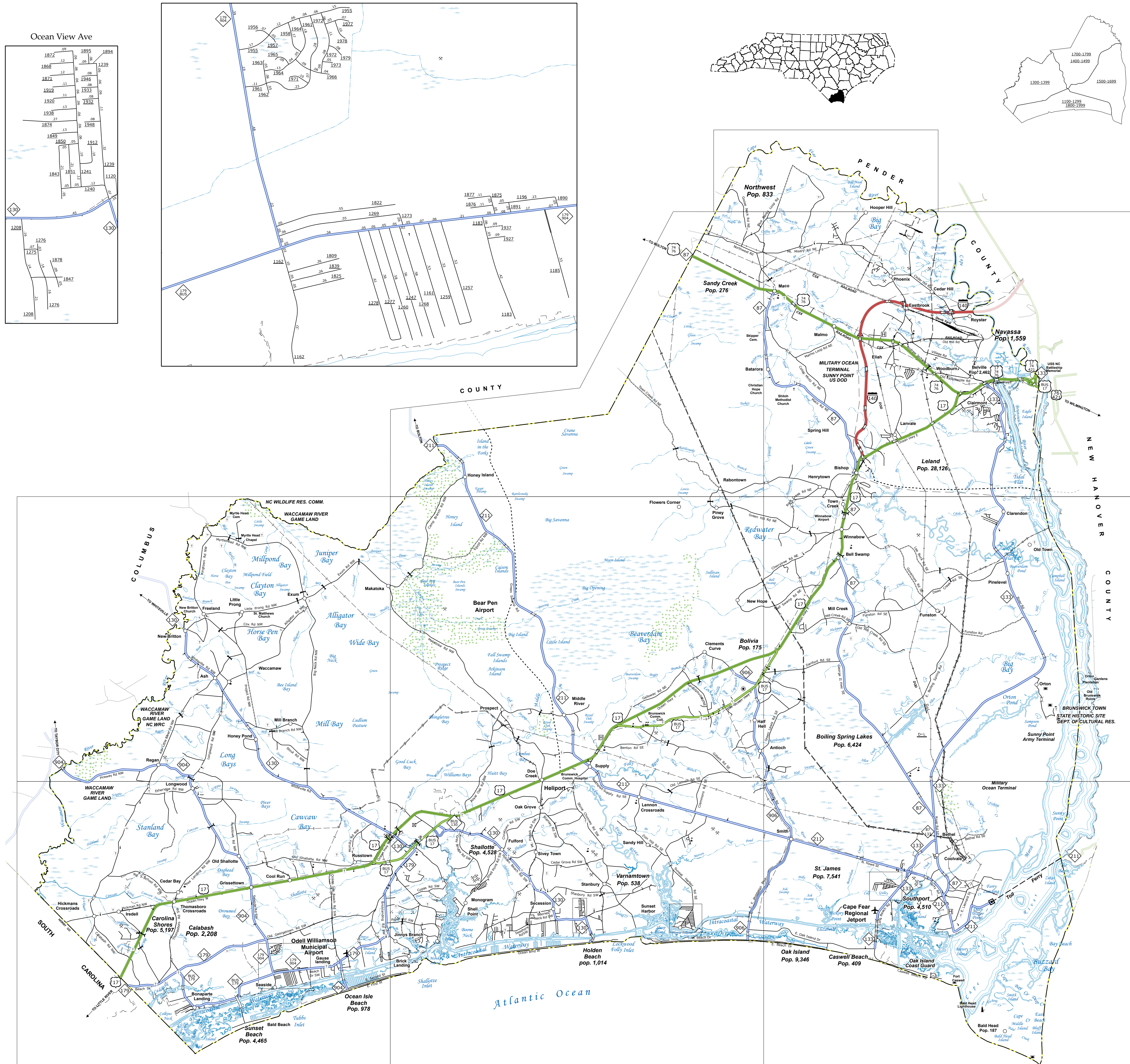
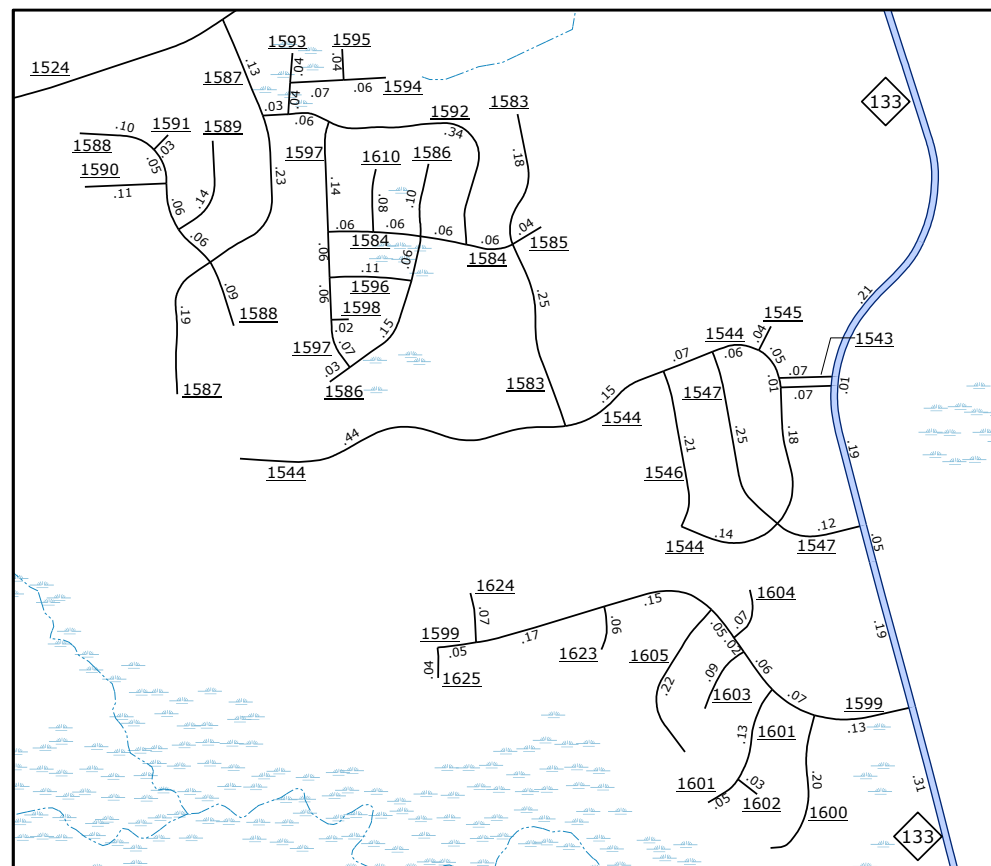
Seapines



Sunset Harbor

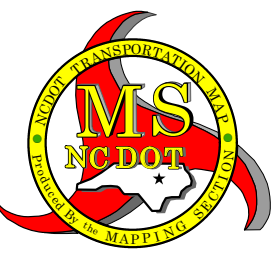
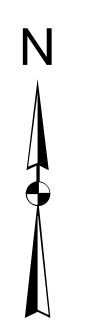


Belville



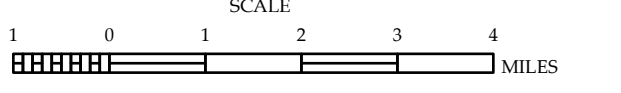
LEGEND

- Legend items including Interstate, US, NC, Divided Hwy, and various symbols for roads, utilities, and landmarks.



BRUNSWICK COUNTY NORTH CAROLINA

PREPARED BY THE NORTH CAROLINA DEPARTMENT OF TRANSPORTATION OPERATIONS PROGRAM MANAGEMENT UNIT - MAPPING SECTION IN COOPERATION WITH THE U.S. DEPARTMENT OF TRANSPORTATION FEDERAL HIGHWAY ADMINISTRATION



COPIES OF THIS MAP ARE AVAILABLE TO THE PUBLIC AT NOMINAL COST. CONTACT US TO ORDER: mapscopied@ncdot.gov

TERMS OF USE: The Mapping Section's goal is to provide the most accurate and current information possible. Map data is compiled from numerous sources with varying dates of publication and map accuracy standards.