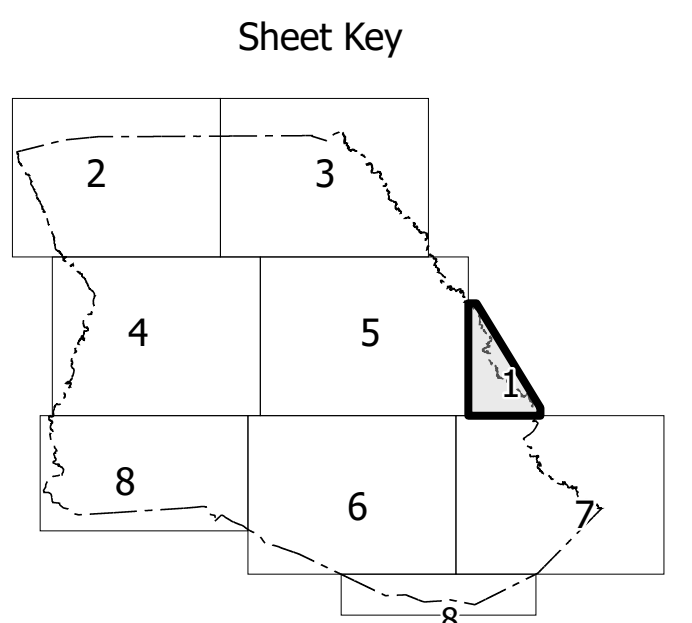
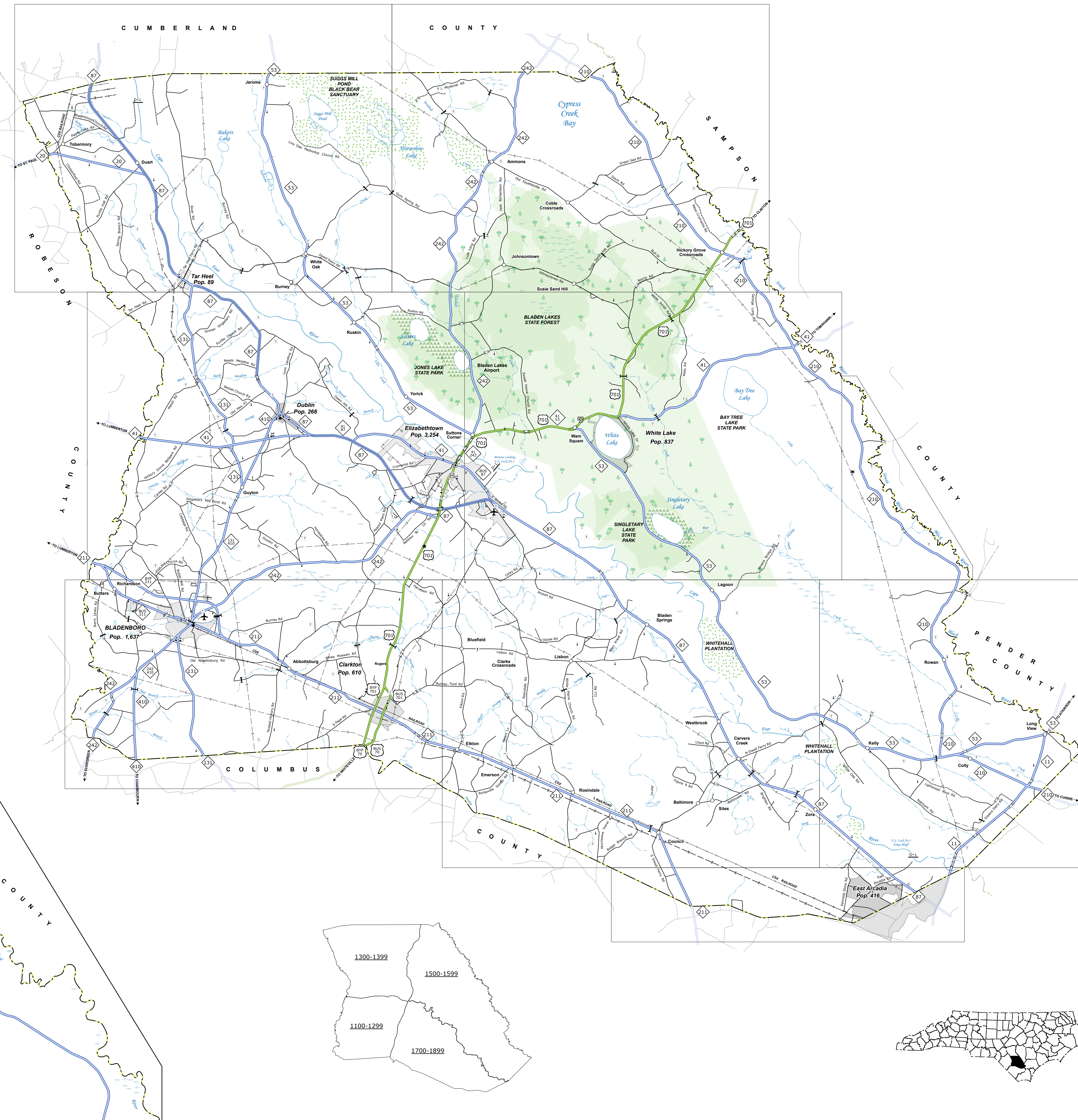
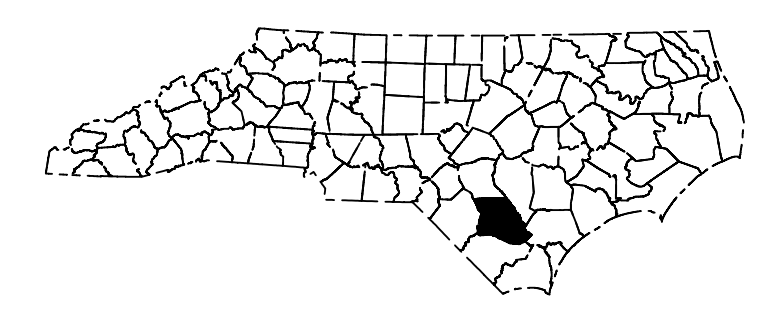
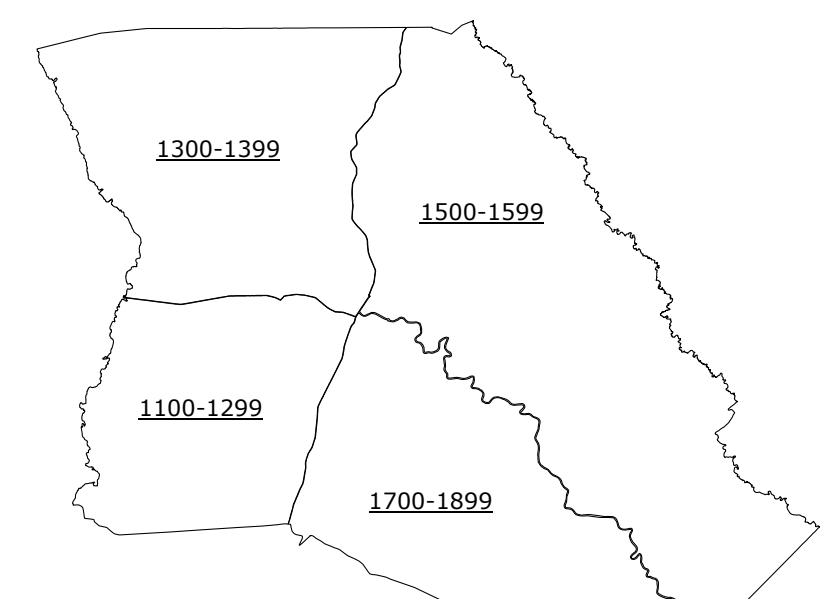
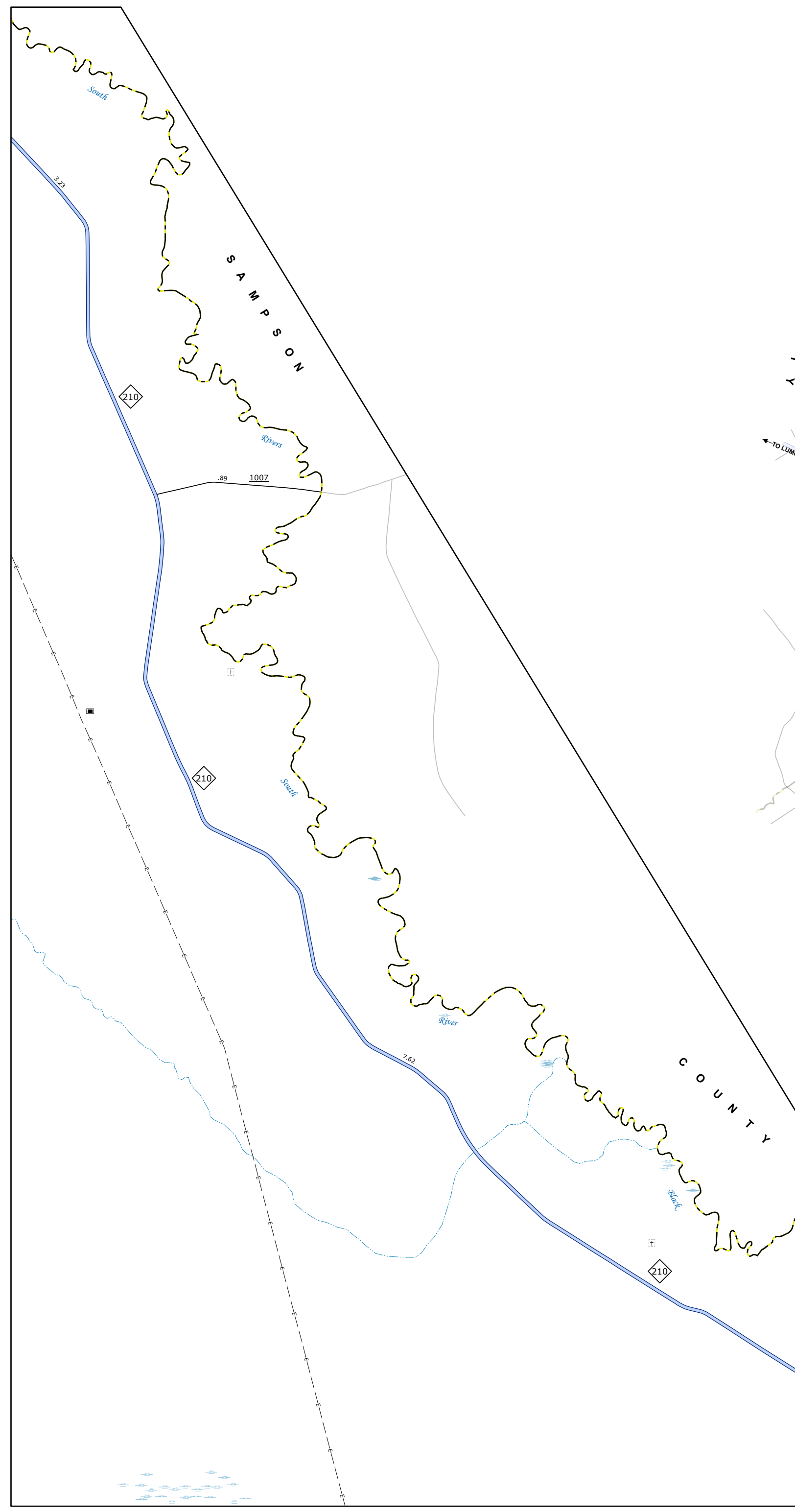


COPIES OF THIS MAP ARE AVAILABLE TO THE PUBLIC AT A NOMINAL COST. CONTACT US TO ORDER.  
 1-800-368-3343  
 www.ncdot.gov

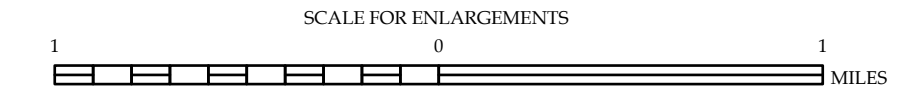
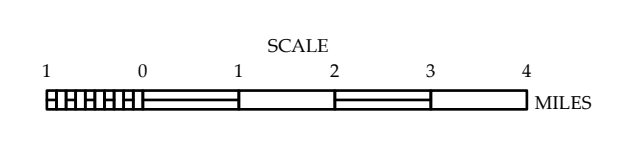


- LEGEND**
- INTERSTATE US NC Divided Hwy
  - UNPAVED SURFACED ROAD
  - HARD SURFACED ROAD
  - NON-SYSTEM ROAD
  - PROVISIONALLY DRAWN ROAD
  - PROJECTED LOCATION
  - INTERSECTION DISTANCE
  - STANDARD ROAD BRIDGE
  - RAILROAD BRIDGE
  - DRAW SPAN ON BRIDGE
  - PEDESTRIAN BRIDGE
  - PEDESTRIAN WALKWAY
  - PEDESTRIAN UNDERPASS
  - VEHICULAR UNDERPASS
  - TUNNEL
  - CULVERT
  - PIPE
  - INTERSTATE HIGHWAY
  - U.S. NUMBERED HIGHWAY
  - N.C. NUMBERED HIGHWAY
  - U.S. NUMBERED BICYCLE ROUTE
  - N.C. NUMBERED BICYCLE ROUTE
  - INTERSTATE INTERCHANGE NUMBER
  - SECONDARY ROAD NUMBER
  - UTILITY LINES
  - RAILROAD LINE
  - RAILROAD STATION
  - INSET AREA
  - STATE LINE
  - COUNTY LINE
  - SMOOTHED URBAN BOUNDARIES
  - CITY LIMITS
  - FERRY ROUTE AND RAMP
  - NARROW CREEK OR STREAM
  - WIDE RIVER OR CREEK
  - RESERVOIR, POND OR LAKE W/ ISLAND
  - DAM OR DAM WITH LOCK
  - WATERFALL
  - SWAMP
  - COMMUNITY
  - COUNTY SEAT
  - SCHOOL
  - COLLEGE OR UNIVERSITY
  - HOSPITAL
  - COAST GUARD STATION
  - CHURCH
  - CHURCH WITH CEMETERY
  - CEMETERY
  - PATROL STATION
  - CORRECTION OR PENAL INSTITUTION
  - QUARRY
  - MINE OR PIT
  - HIGHWAY GARAGE OR MAINT. YARD
  - HIGHWAY DIV. OR DIST. OFFICE
  - MILITARY POST
  - WEIGH STATION
  - FARGROUNDS
  - HISTORICAL SITE
  - POINTS OF INTEREST
  - POST OFFICE
  - STATE FOREST
  - LIGHTHOUSE
  - MOUNTAIN SUMMIT
  - MOUNTAIN GAP
  - OVERLOOK
  - REST AREA
  - VISITOR CENTER REST AREA
  - WELCOME CENTER REST AREA
  - AIRPORT
  - MILITARY AIRPORT
  - NATIONAL / STATE FOREST BOUNDARY
  - WILDLIFE REFUGE
  - NATIONAL / STATE PARK BOUNDARY
  - GAME LANDS BOUNDARY
  - MILITARY RESERVATION BOUNDARY
  - INDIAN RESERVATION BOUNDARY



**BLADEN COUNTY  
NORTH CAROLINA**

PREPARED BY THE  
 NORTH CAROLINA DEPARTMENT OF TRANSPORTATION  
 OPERATIONS PROGRAM MANAGEMENT UNIT - MAPPING SECTION  
 IN COOPERATION WITH THE  
 U.S. DEPARTMENT OF TRANSPORTATION  
 FEDERAL HIGHWAY ADMINISTRATION



TERMS OF USE: The Mapping Section's goal is to provide the most accurate and current information possible. Map data is compiled from numerous sources with varying dates of publication and map accuracy standards. As a result, the accuracy, currency, and completeness of the data provided will vary. The North Carolina Department of Transportation shall not be held liable for any errors in the map data. This map cannot be construed to be a legal document. The information shown on this map was last updated in March 2024. For digital copies of this map or additional map products, visit <https://www.ncdot.gov/resources/Data-Maps.aspx>.