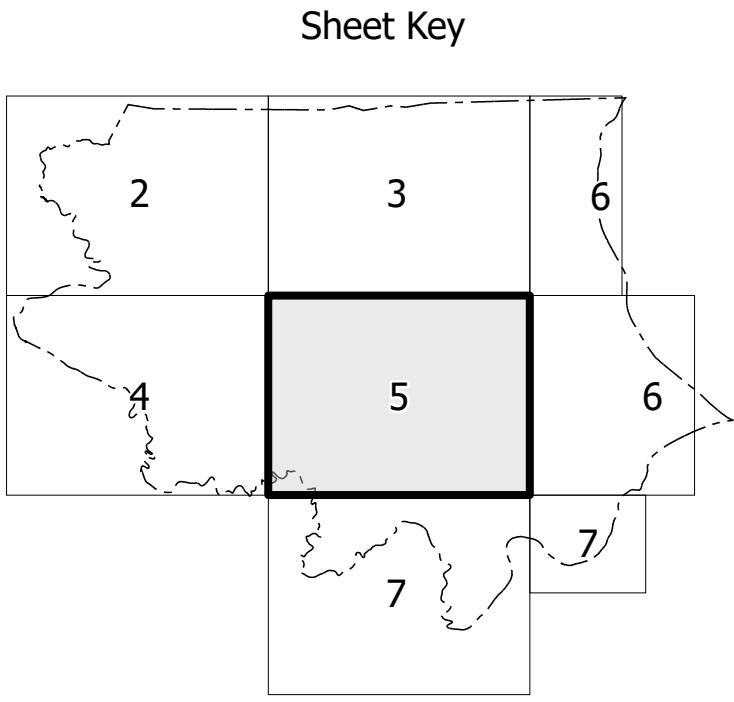
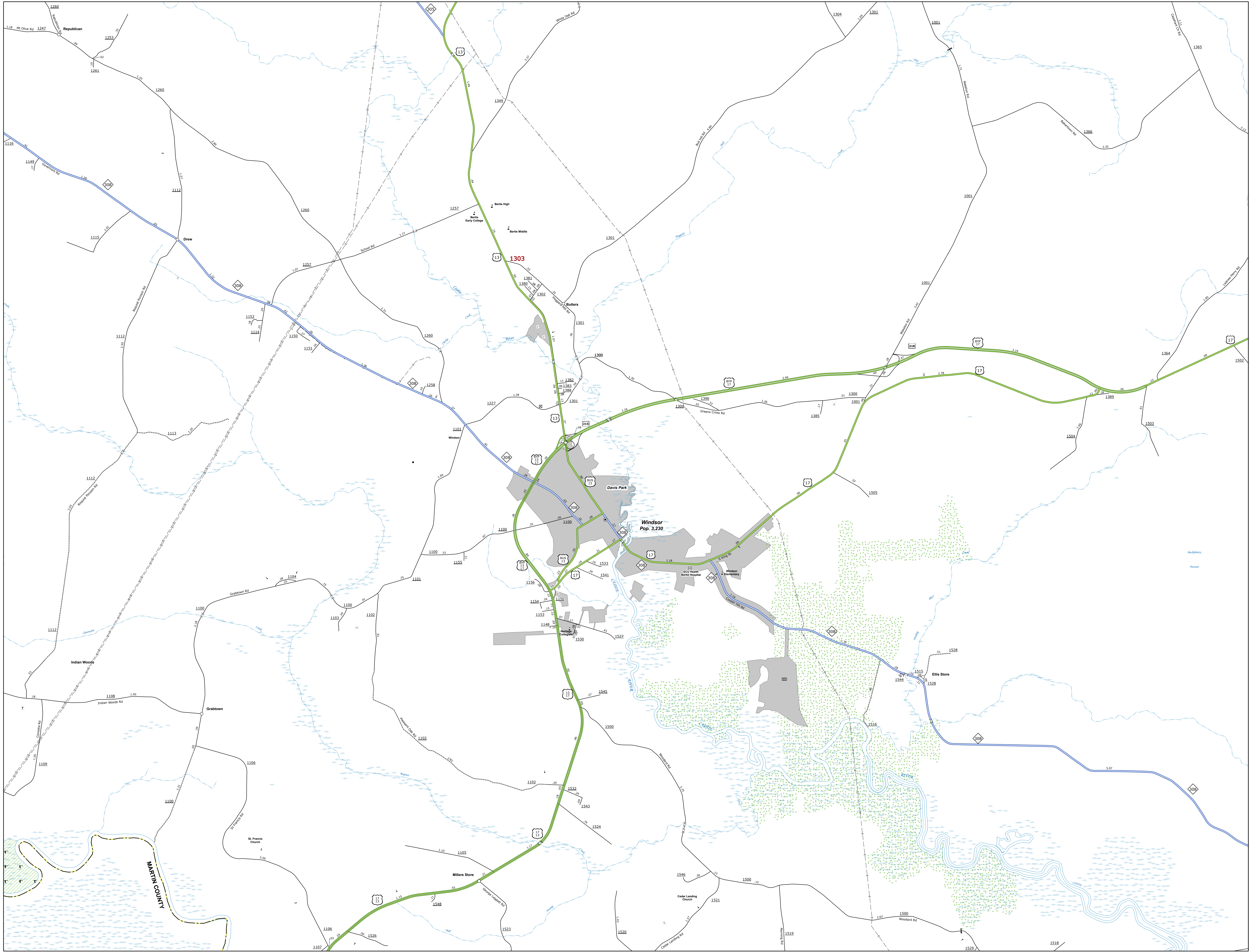


TERMS OF USE: The Mapping Section's goal is to provide the most accurate and current information possible. Map data is compiled from numerous sources with varying dates of publication and map accuracy standards. As a result, the accuracy, currency and completeness of this map cannot be guaranteed to be a legal document. This information shown on this map was last updated in June 2025. For digital copies of this map in different map products, visit <https://www.ncdot.gov/transportation/mapping/Products/Pages/Map-Products.aspx>

COPIES OF THIS MAP ARE AVAILABLE TO THE PUBLIC. FOR MORE INFORMATION, CONTACT US TO ORDER. PHONE: 919.872.3333 FAX: 919.872.3333 EMAIL: [maps@ncdot.gov](mailto:maps@ncdot.gov) WEB: <https://www.ncdot.gov/transportation/mapping/Products/Pages/Map-Products.aspx>



#### LEGEND

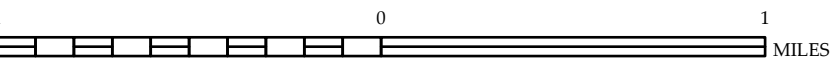
- INTERSTATE US NC Divided Hwy Undivided Hwy
- BLUE BRIDGE PARKWAY
- UNPAVED SURFACED ROAD
- NON-SURFACED ROAD
- PROPOSED LOCATION
- INTERSECTION DISTANCE
- STANDARD ROAD BRIDGE
- RAILROAD BRIDGE
- DRIVE ON ON BRIDGE
- PEDESTRIAN BRIDGE
- PEDESTRIAN WALKWAY
- PEDESTRIAN UNDERPASS
- VEHICULAR UNDERPASS
- TUNNEL
- CAVEWAY
- PIPE
- INTERSTATE HIGHWAY
- U.S. NUMBERED HIGHWAY
- U.S. NUMBERED HIGHWAY
- U.S. NUMBERED BI-CYCLE ROUTE
- U.S. NUMBERED BI-CYCLE ROUTE
- INTERSTATE INTERCHANGE NUMBER
- SECONDARY ROAD NUMBER
- UTILITY LINES
- RAILROAD LINE
- RAILROAD STATION
- POST AREA
- STATE LINE
- COUNTY LINE
- SMOOTHED URBAN BOUNDARIES
- CITY LIMITS
- RAILROAD ROUTE AND RAMP
- NARROW CREEK OR STREAM
- WIDE RIVER OR CREEK
- RESERVOIR, POND OR LAKE W/ ISLAND
- DAM OR DAM WITH LOCK
- WATERFALL
- SWAMP
- COMMUNITY
- COUNTY SEAT
- SCHOOL
- COLLEGE OR UNIVERSITY
- HOSPITAL
- COAST GUARD STATION
- CHURCH
- CHURCH WITH CEMETERY
- CEMETERY
- PATROL STATION
- CORRECTION OR PENAL INSTITUTION
- QUARRY
- MINE OR PIT
- HIGHWAY GARAGE OR MAINT. YARD
- HIGHWAY DIV. OR DIST. OFFICE
- MILITARY POST
- WEIGH STATION
- RAILROAD YARD
- HISTORICAL SITE
- INVEST. OF INTEREST
- POST OFFICE
- STATE FOREST
- LIGHTHOUSE
- MOUNTAIN SUMMIT
- OVERLOOK
- REST AREA
- WILDLIFE REST AREA
- WELCOME CENTER AREA
- WILDLIFE
- MILITARY AIRPORT
- NATIONAL STATE FOREST BOUNDARY
- WILDLIFE REFUGE
- NATIONAL STATE PARK BOUNDARY
- GAME LANDS BOUNDARY
- MILITARY RESERVATION BOUNDARY
- INDIAN RESERVATION BOUNDARY



## BERTIE COUNTY NORTH CAROLINA

PREPARED BY THE  
NORTH CAROLINA DEPARTMENT OF TRANSPORTATION  
OPERATIONS PROGRAM MANAGEMENT UNIT - MAPPING SECTION  
IN COOPERATION WITH THE  
U.S. DEPARTMENT OF TRANSPORTATION  
FEDERAL HIGHWAY ADMINISTRATION

SCALE



NORTH CAROLINA PLANE COORDINATE SYSTEM  
LAMBERT CONFORMAL CONIC PROJECTION