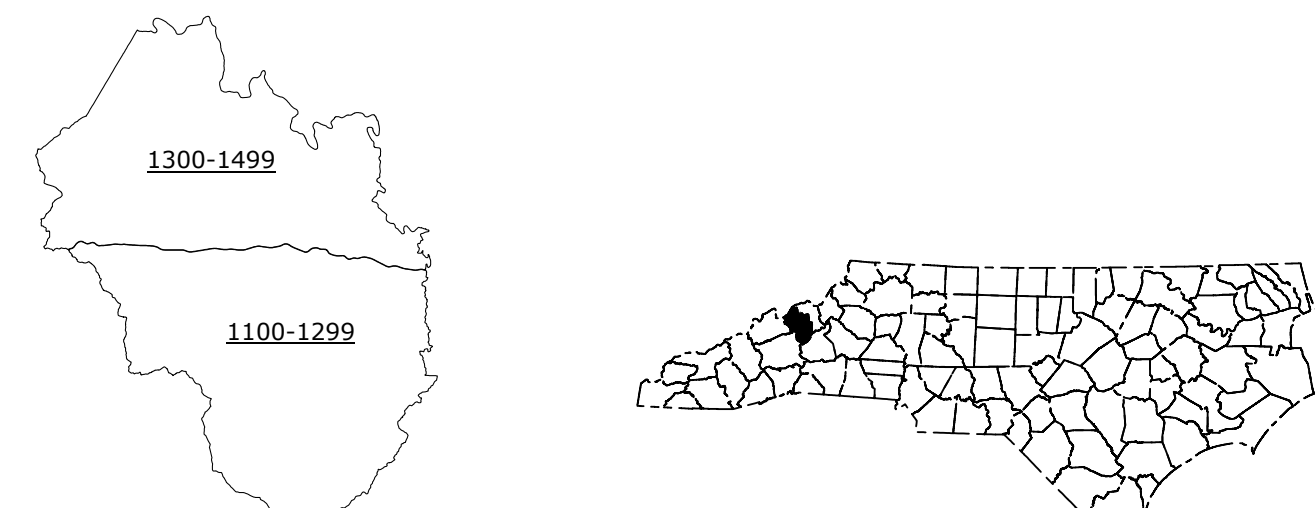


LEGEND

- INTERSTATE US NC
- Divided Hwy
- Undivided Hwy
- BLUE RIDGE PARKWAY
- UNPAVED SURFACE ROAD
- RAILROAD TRACK ROAD
- NO SYSTEM ROAD
- PROPOSED/UNPAVED DRAINAGE ROAD
- PROPOSED LOCAL ROAD
- INTERSTATE THROUGHWAY
- STANDARD ROAD BRIDGE
- RAILROAD BRIDGE
- IRON SPUR OR BRIDGE
- PIEDMONT BRIDGE
- PIEDMONT UNDERPASS
- VERMILION UNDERPASS
- TUNNEL
- CULVERT
- PPV
- INTERSTATE HIGHWAY
- U.S. NUMBERED HIGHWAY
- N.C. NUMBERED HIGHWAY
- U.S. NUMBERED BI-CYCLE ROUTE
- N.C. NUMBERED BI-CYCLE ROUTE
- INTERSTATE INTERCHANGE NUMBER
- SECONDARY ROAD NUMBER
- UTILITY LINES
- RAILROAD LINE
- RAILROAD STATION
- STATE LINE
- COUNTY LINE
- SMOOTHED URBAN BOUNDARIES
- CITY LIMITS
- FERROUS RAILROAD
- NARROW GULCH OR STREAM
- WIDE RIVER OR CREEK
- RESERVOIR, POND, LAKE, W. ISLAND
- DAM OR DAM WITH LOCK
- WATERFALL
- SWAMP
- COMMUNITY
- COUNTY SEAL
- SCHOOL
- COLLEGE OR UNIVERSITY
- HOSPITAL
- CONGREGATION
- CHURCH
- CHURCH WITH CEMETERY
- CEMETERY
- POWERS STATION
- CONCRETE OR PAVEMENT INSTITUTION
- QUARRY
- MINE OR PIT
- HIGHWAY GARAGE OR MAINT. YARD
- BIRCHWAY DEP. OR REST. OFFICE
- MILITARY POST
- WEIGH STATION
- LABORATORY
- HISTORICAL SITE
- PUBLIC INTEREST
- POST OFFICE
- STATE FOREST
- LIGHTHOUSE
- MOUNTAIN SHED
- MOUNTAIN GAP
- OVERLOOK
- REST AREA
- VISITOR TRAIL AREA
- WELLS AND CTR. AREA
- AIRPORT
- MILITARY AIRPORT
- NATIONAL - STATE FOREST BOUNDARY
- WILDLIFE REFUGE
- NATIONAL - STATE PARK BOUNDARY
- GAME LANDS BOUNDARY
- MILITARY REGENERATION BOUNDARY
- INDIAN REGENERATION BOUNDARY



**YANCEY COUNTY
NORTH CAROLINA**

PREPARED BY THE
NORTH CAROLINA DEPARTMENT OF TRANSPORTATION
OPERATIONS PROGRAM MANAGEMENT UNIT - MAPPING SECTION
IN COOPERATION WITH THE
U.S. DEPARTMENT OF TRANSPORTATION
FEDERAL HIGHWAY ADMINISTRATION

SCALE

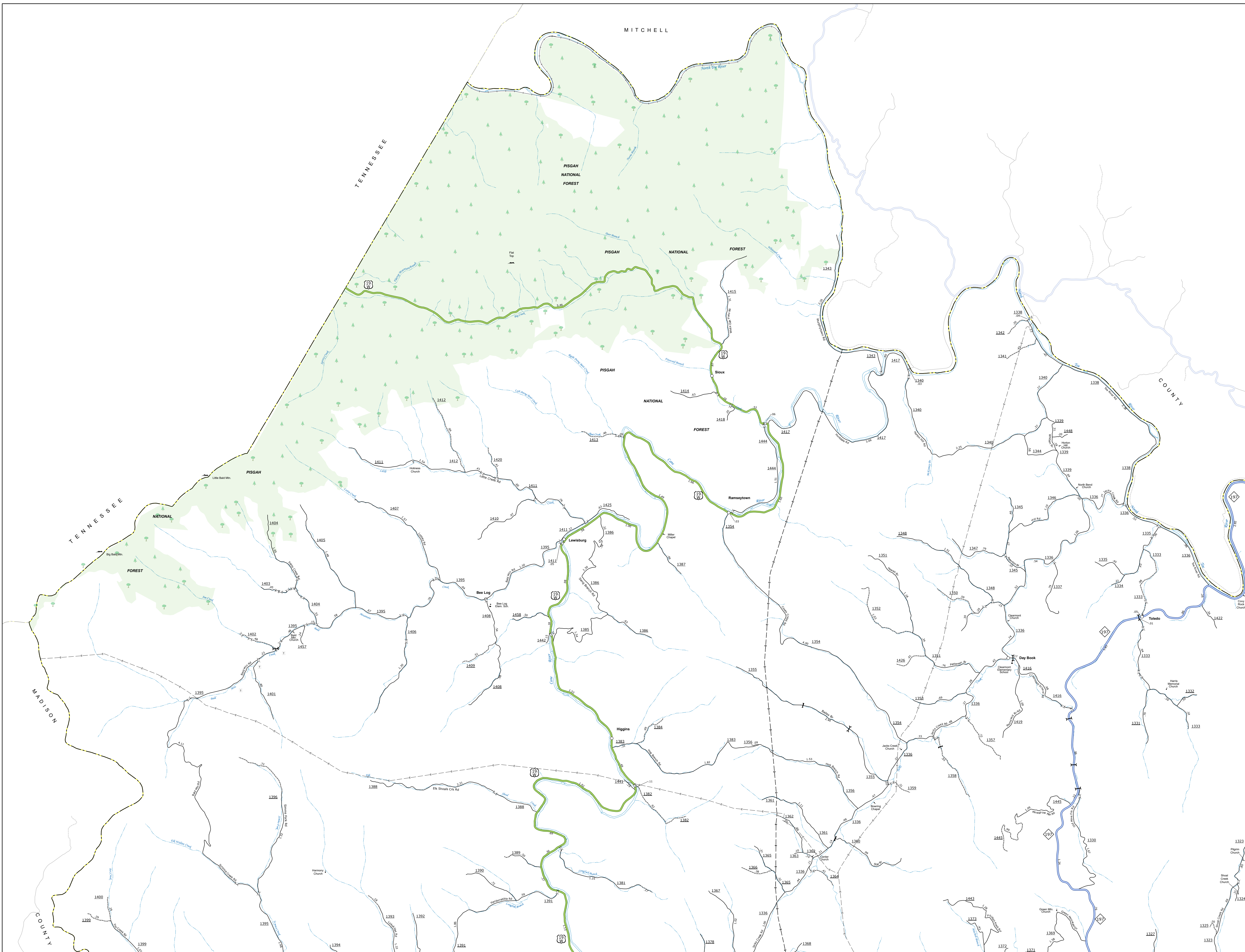
1 0 1 2 3 4
MILES

SCALE FOR ENLARGEMENTS

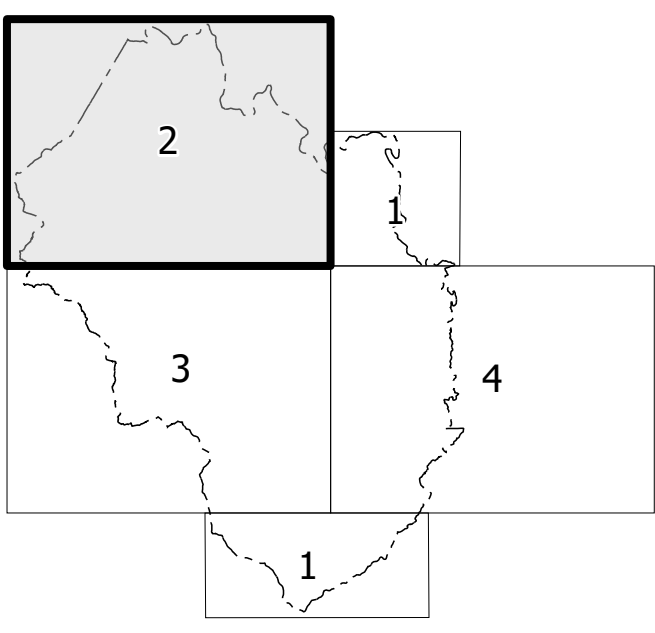
1 0 1
MILES

TERMS OF USE: This mapping section is prepared to provide the most accurate and current information possible. Map data is compiled from a variety of sources including aerial photography, ground surveys, and other data provided by users. The North Carolina Department of Transportation does not warrant the accuracy or reliability of any information on this map. For additional copies of this map or additional map products, visit www.ncdot.com/Products/Maps/Maps.htm.

COPIES OF THIS MAP ARE AVAILABLE TO THE PUBLIC AT A COST OF \$10.00 PER COPY. CONTACT THE MAP INFORMATION CENTER AT www.ncdot.com/Products/Maps/Maps.htm FOR MORE INFORMATION.



Sheet Key



- LEGEND**
- INTERSTATE US NC Divided Hwy Undivided Hwy
- UNPAVED SUBGRADED ROAD
- BARRED SUBGRADED ROAD
- ROAD SYSTEM ROAD
- PROPOSED BRIDGED ROAD
- PROPOSED TUNNEL ROAD
- INTERSECTION DISTANCE
- STANDARD ROAD BRIDGE
- RAIL ROAD BRIDGE
- DRAW SPAN ON BRIDGE
- PEDESTRIAN BRIDGE
- PEDESTRIAN WALKWAY
- PEDESTRIAN OVERPASS
- VEHICULAR UNDERPASS
- TUNNEL
- CLIFF
- PIE
- INTERSTATE HIGHWAY
- U.S. NUMBERED HIGHWAY
- N.C. NUMBERED HIGHWAY
- U.S. NUMBERED BI-CYCLE ROUTE
- N.C. NUMBERED BI-CYCLE ROUTE
- INTERSTATE INTERCHANGE NUMBER
- SECONDARY ROAD NUMBER
- THRUWAY
- RAILROAD LINE
- RAILROAD STATION
- INLET AREA
- STATE LINE
- COUNTY LINE
- INCORPORATED URBAN BOUNDARIES
- CITY LIMITS
- FERRY ROUTE AND RAMP
- NARROW CREEK OR STREAM
- WIDE RIVER OR CREEK
- RESERVOIR, POND OR LAKE W/ ISLAND
- DAM OR DAM WITH LOCK
- NATURAL
- SWAMP
- COMBINATION
- COUNTY SEAT
- SCHOOL
- COLLEGE OR UNIVERSITY
- HOSPITAL
- UNCLASSIFIED STATION
- CHURCH
- CHURCH WITH CEMETERY
- CEMETERY
- PRISON
- CORRECTIONAL OR PENAL INSTITUTION
- QUARRY
- MINE OR PIT
- HIGHWAY GARAGE OR MAINT. YARD
- BICYCLE WAY OR POST-OFFICE
- MILITARY POST
- WEIGH STATIONS
- FARM BUILDINGS
- HISTORICAL SITE
- PUBLIC OR PRIVATE
- POST OFFICE
- STATE FOREST
- LIGHTHOUSE
- NATURAL STATE SUNSHINE
- MOUNTAIN GAP
- OVERLOOK
- REST AREA
- VISITOR REST AREA
- WELL/pond/ctr REST AREA
- AIRPORT
- MILITARY AIRPORT
- NATIONAL STATE FOREST BOUNDARY
- WILDLIFE REFUGE
- NATIONAL STATE PARK BOUNDARY
- GAME LANDS BOUNDARY
- MILITARY RESERVATION BOUNDARY
- POKAN RESERVATION BOUNDARY



YANCEY COUNTY NORTH CAROLINA

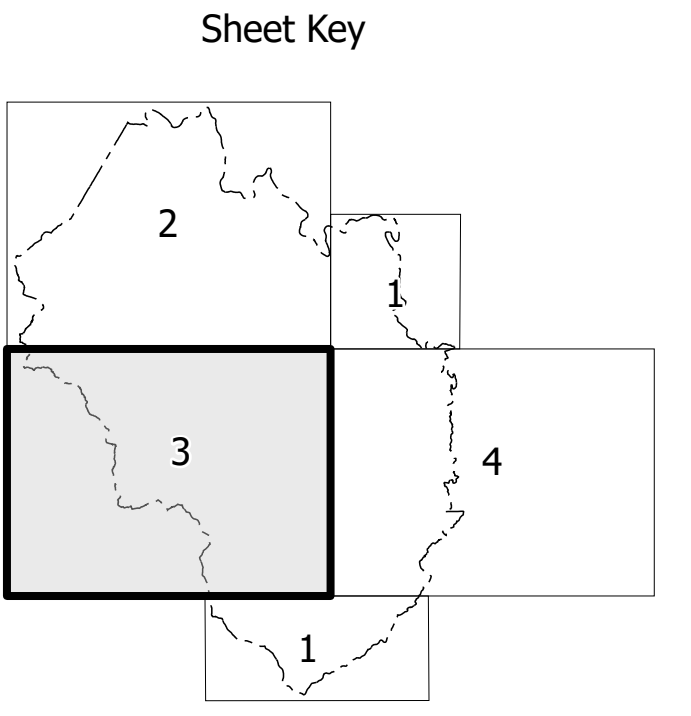
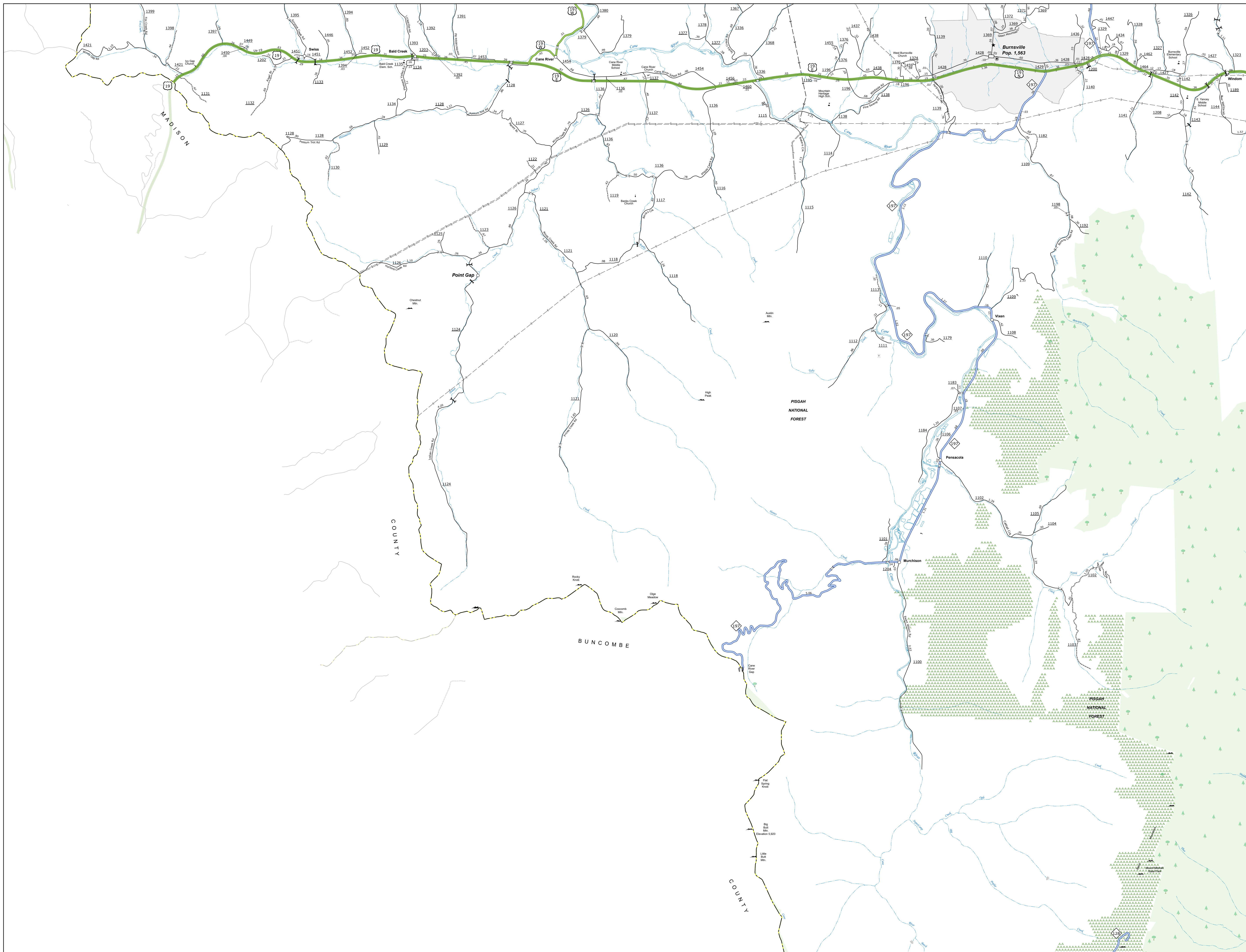
PREPARED BY THE
NORTH CAROLINA DEPARTMENT OF TRANSPORTATION
OPERATIONS PROGRAM MANAGEMENT UNIT - MAPPING SECTION
IN COOPERATION WITH THE
U.S. DEPARTMENT OF TRANSPORTATION
FEDERAL HIGHWAY ADMINISTRATION

SCALE

NORTH CAROLINA PLANE COORDINATE SYSTEM
LAMBERT CONFORMAL CONIC PROJECTION

TERMS OF USE: This mapping section's goal is to provide the most accurate and current information possible. Map data is compiled from the data provided by the U.S. Department of Transportation and other sources. The North Carolina Department of Transportation does not warrant the accuracy of the data provided in this map. For additional information, visit www.ncdot.gov. For digital copies of this map or additional map products, visit www.ncdot.gov/Information/MapProducts/MapProducts.aspx.

COPIES OF THIS MAP ARE AVAILABLE TO THE PUBLIC AT THE NORTH CAROLINA DEPARTMENT OF TRANSPORTATION, 100 SOUTH PARKWAY, RALEIGH, NC 27601. (919) 874-2400.

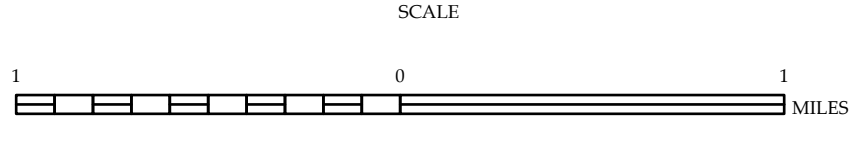


- LEGEND**
- INTERSTATE US NC
 - UNPAVED SUBGRADED ROAD
 - PAVED SUBGRADED ROAD
 - UNPAVED SURFACED ROAD
 - PAVED SURFACED ROAD
 - PROPOSED SURFACED ROAD
 - PROPOSED UNPAVED SURFACED ROAD
 - INTERSECTION DISTANCE
 - STANDARD ROAD BRIDGE
 - RAILROAD BRIDGE
 - DRAG SPAN OVER BRIDGE
 - PERMANENT BRIDGE
 - PERMANENT UNDERPASS
 - VEHICULAR UNDERPASS
 - TUNNEL
 - CUTBACK
 - PIV
 - INTERSTATE HIGHWAY
 - U.S. NUMBERED HIGHWAY
 - N.C. NUMBERED HIGHWAY
 - U.S. NUMBERED BI-CYCLE ROUTE
 - N.C. NUMBERED BI-CYCLE ROUTE
 - INTERSTATE INTERCHANGE NUMBER
 - SECONDARY ROAD NUMBER
 - THRUWAY
 - THRUWAY
 - RAILROAD LINE
 - RAILROAD STATION
 - RAILROAD STATION
 - COUNTY LINE
 - STATE LINE
 - CITY LIMITS
 - UNINCORPORATED BOUNDARIES
 - CITY LIMITS
 - FERRY ROUTE AND RAMP
 - NARROW GULCH OR STREAM
 - WIDE SWALE OR GULCH
 - RESERVOIR, POND OR LAKE W/ ISLAND
 - DAM OR DAM WITH LOCK
 - NATURAL
 - SWAMP
 - COMBINATION
 - COUNTY SEAT
 - SCHOOL
 - COLLEGE OR UNIVERSITY
 - HOSPITAL
 - STAGE STATION
 - CHURCH
 - CHURCH WITH CEMETERY
 - CEMETERY
 - POST OFFICE
 - POST OFFICE
 - CORRECTIONAL INSTITUTION
 - QUARRY
 - MEN OR PIT
 - HIGHWAY GARAGE OR MAINT. YARD
 - HIGHWAY DEP. OR DIST. OFFICE
 - MILITARY POST
 - WEIGH STATION
 - FARM BOUNDARY
 - HISTORICAL SITE
 - PUNYA OR FURNACE
 - POST OFFICE
 - STATE FOREST
 - LIGHTHOUSE
 - NORTH STAR SURVEY
 - MONUMENT GAP
 - OVERLOOK
 - REST AREA
 - VIEWING REST AREA
 - WELCOME CENTER AREA
 - AREPAC
 - MILITARY AIRPORT
 - NATIONAL STATE FOREST BOUNDARY
 - WILDLIFE REFUGE
 - NATIONAL STATE PARK BOUNDARY
 - GAME LANDS BOUNDARY
 - MILITARY RESERVATION BOUNDARY
 - INDIAN RESERVATION BOUNDARY

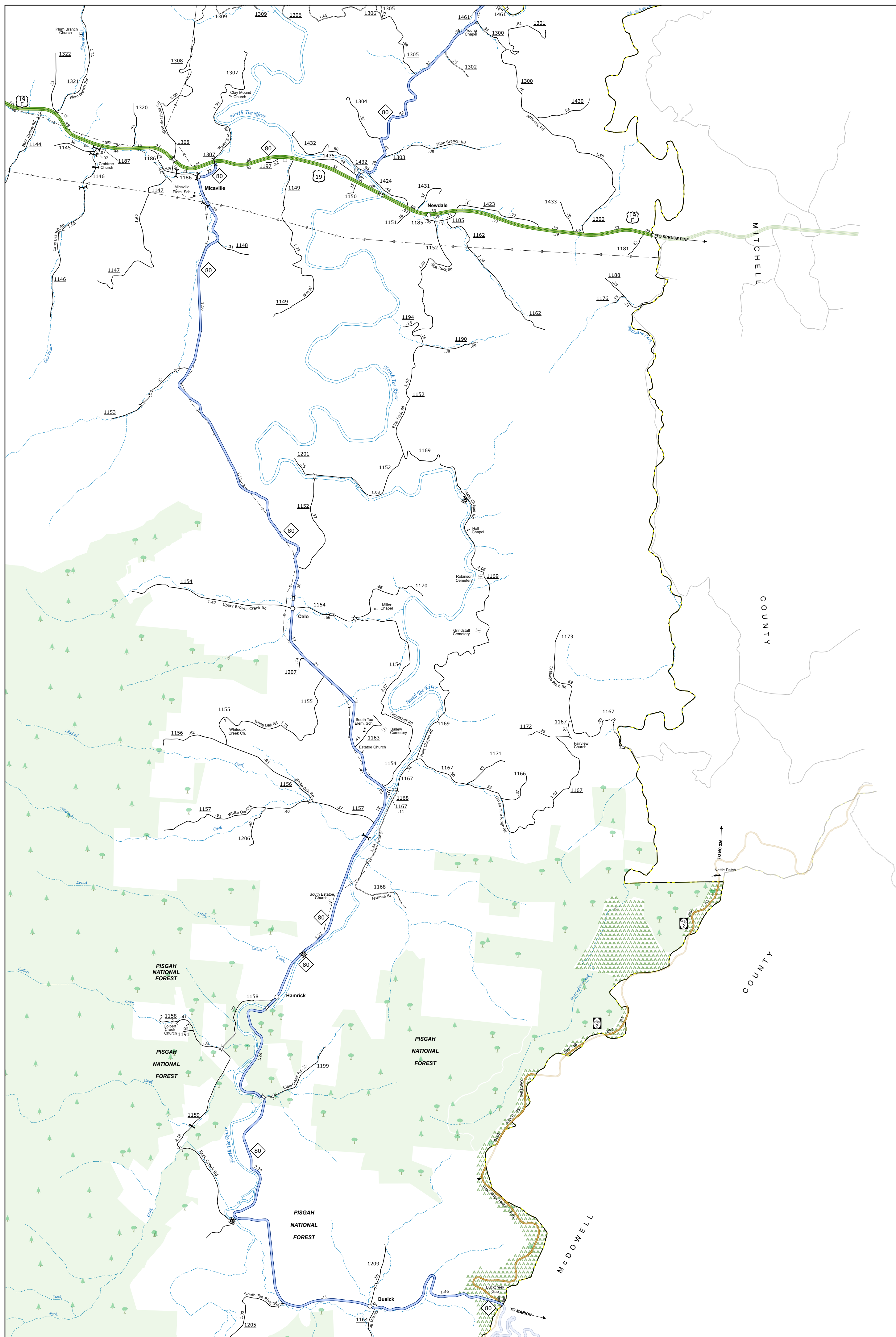


**YANCEY COUNTY
NORTH CAROLINA**

PREPARED BY THE
NORTH CAROLINA DEPARTMENT OF TRANSPORTATION
OPERATIONS PROGRAM MANAGEMENT UNIT - MAPPING SECTION
IN COOPERATION WITH THE
U.S. DEPARTMENT OF TRANSPORTATION
FEDERAL HIGHWAY ADMINISTRATION

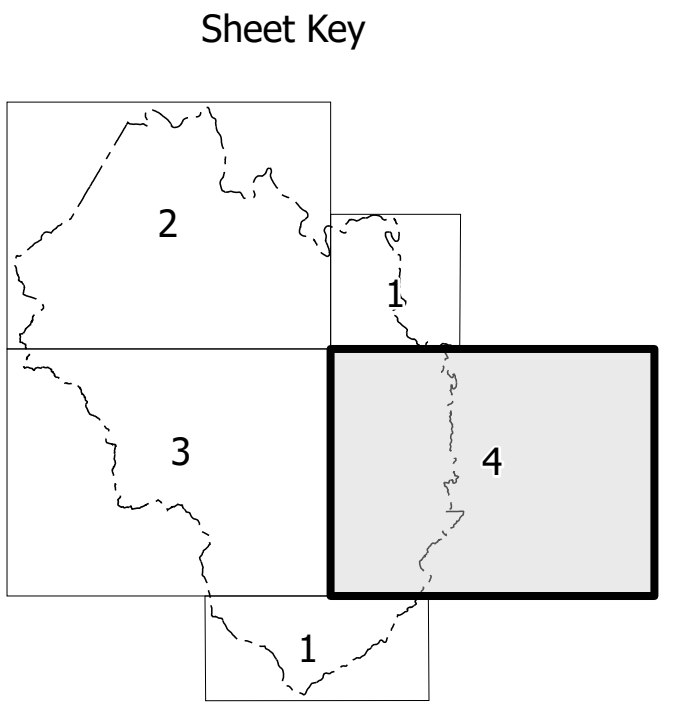


NORTH CAROLINA PLANE COORDINATE SYSTEM
LAMBERT CONFORMAL CONIC PROJECTION



TERMS OF USE: This mapping section is provided for informational purposes only. It is not intended to be used as a legal document. The North Carolina Department of Transportation does not warrant the accuracy of the data provided in this map. The North Carolina Department of Transportation does not warrant the accuracy of the data provided in this map. For original copies of this map or additional map products, visit www.ncdot.com.

COPIES OF THIS MAP ARE AVAILABLE TO THE PUBLIC AT THE FOLLOWING ADDRESS: NORTH CAROLINA DEPARTMENT OF TRANSPORTATION, 1000 EAST 7TH STREET, RALEIGH, NC 27601. (919) 874-2424

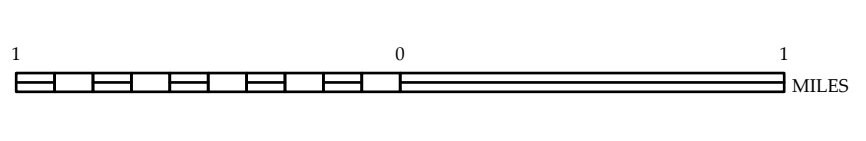


- LEGEND**
- INTERSTATE US NC Divided Hwy Undivided Hwy
 - UNPAVED SUBGRADED ROAD
 - PAVED SUBGRADED ROAD
 - PAVED ASPHALT ROAD
 - PROPOSED ASPHALT ROAD
 - PROPOSED GRAVEL ROAD
 - PROPOSED DIRT ROAD
 - PROPOSED INTERSTATE
 - STANDARD ROAD BRIDGE
 - RAIL ROAD BRIDGE
 - RAIL SPAN ON BRIDGE
 - RAILROAD BRIDGE
 - RAILROAD UNDERPASS
 - RAILROAD OVERPASS
 - TUNNEL
 - CUTBACK
 - PIP
 - INTERSTATE HIGHWAY
 - U.S. NUMBERED HIGHWAY
 - N.C. NUMBERED HIGHWAY
 - U.S. NUMBERED BI-CYCLE ROUTE
 - N.C. NUMBERED BI-CYCLE ROUTE
 - INTERSTATE INTERCHANGE NUMBER
 - SECONDARY ROAD NUMBER
 - THRUWAY
 - THRUWAY
 - RAILROAD LINE
 - RAILROAD STATION
 - RAILROAD
 - STATE LINE
 - COUNTY LINE
 - STATE LINE
 - CITY LIMITS
 - UNINCORPORATED BOUNDARIES
 - CITY LIMITS
 - RAILROAD AND RAMP
 - NARROW GULCH OR STREAM
 - WIDE RIVER OR CREEK
 - RESERVOIR, POND OR LAKE W/ ISLAND
 - DAM OR DAM WITH LOCK
 - WATERFALL
 - SWAMP
 - COMBINATION
 - COUNTY SEAT
 - SCHOOL
 - COLLEGE OR UNIVERSITY
 - HOSPITAL
 - ON-CAMPUS STATION
 - CHURCH
 - CHURCH WITH CEMETERY
 - CEMETERY
 - POLICE STATION
 - CORRECTIONAL INSTITUTION
 - QUARRY
 - MEN OR RET
 - HIGHWAY GARAGE OR MAINT. YARD
 - HIGHWAY DEP. OR DIST. OFFICE
 - MILITARY POST
 - WEIGH STATIONS
 - FARM BODIES
 - HISTORICAL SITE
 - PUNYA OF INTEREST
 - POST OFFICE
 - STATE FOREST
 - LIGHTHOUSE
 - NON-STATE SUNSHINE
 - MOONSHINE GAP
 - OVERLOOK
 - REST AREA
 - STATE FOREST AREA
 - WELLSIDE REST AREA
 - AREFORD
 - MILITARY AIRPORT
 - NATIONAL STATE FOREST BOUNDARY
 - WILDLIFE REFUGE
 - NATIONAL STATE PARK BOUNDARY
 - GAME LANDS BOUNDARY
 - MILITARY RESERVATION BOUNDARY
 - INDIAN RESERVATION BOUNDARY



**YANCEY COUNTY
NORTH CAROLINA**

PREPARED BY THE
NORTH CAROLINA DEPARTMENT OF TRANSPORTATION
OPERATIONS PROGRAM MANAGEMENT UNIT - MAPPING SECTION
IN COOPERATION WITH THE
U.S. DEPARTMENT OF TRANSPORTATION
FEDERAL HIGHWAY ADMINISTRATION



NORTH CAROLINA PLANE COORDINATE SYSTEM
LAMBERT CONFORMAL CONIC PROJECTION