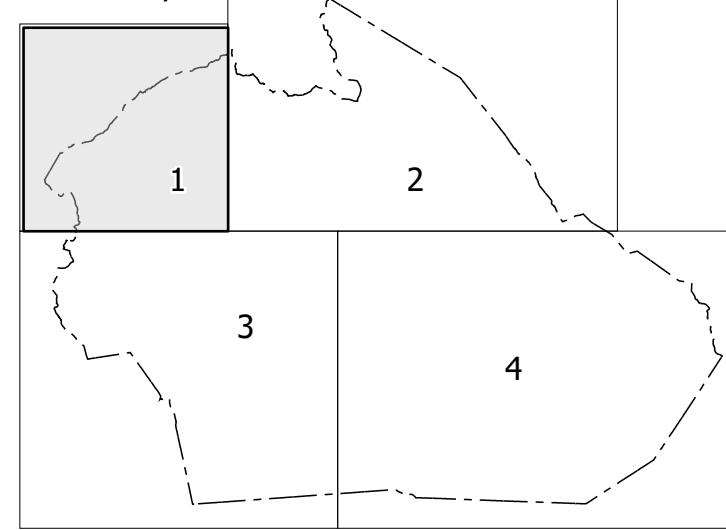


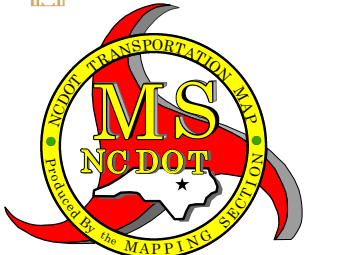
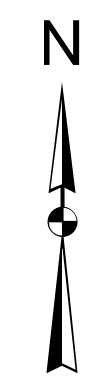
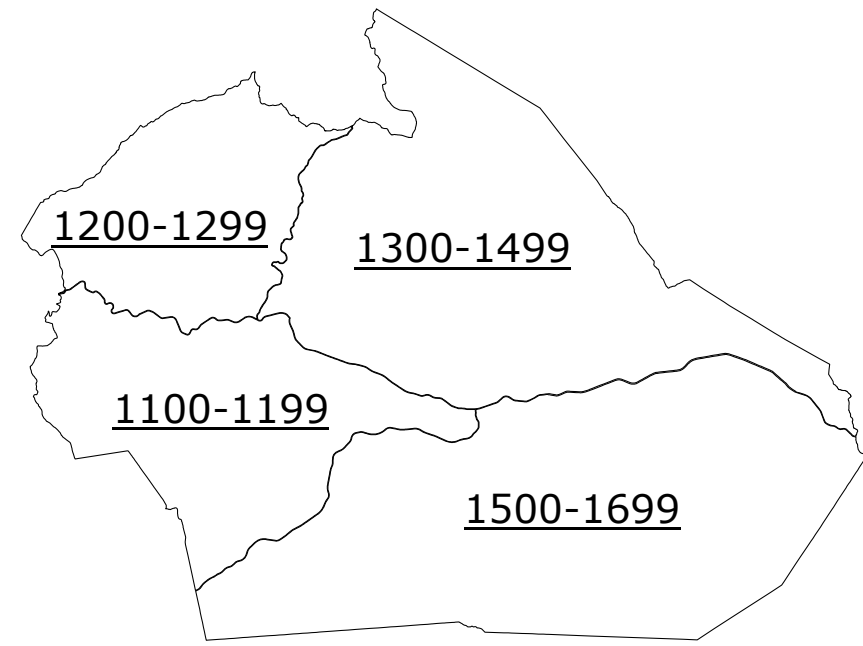
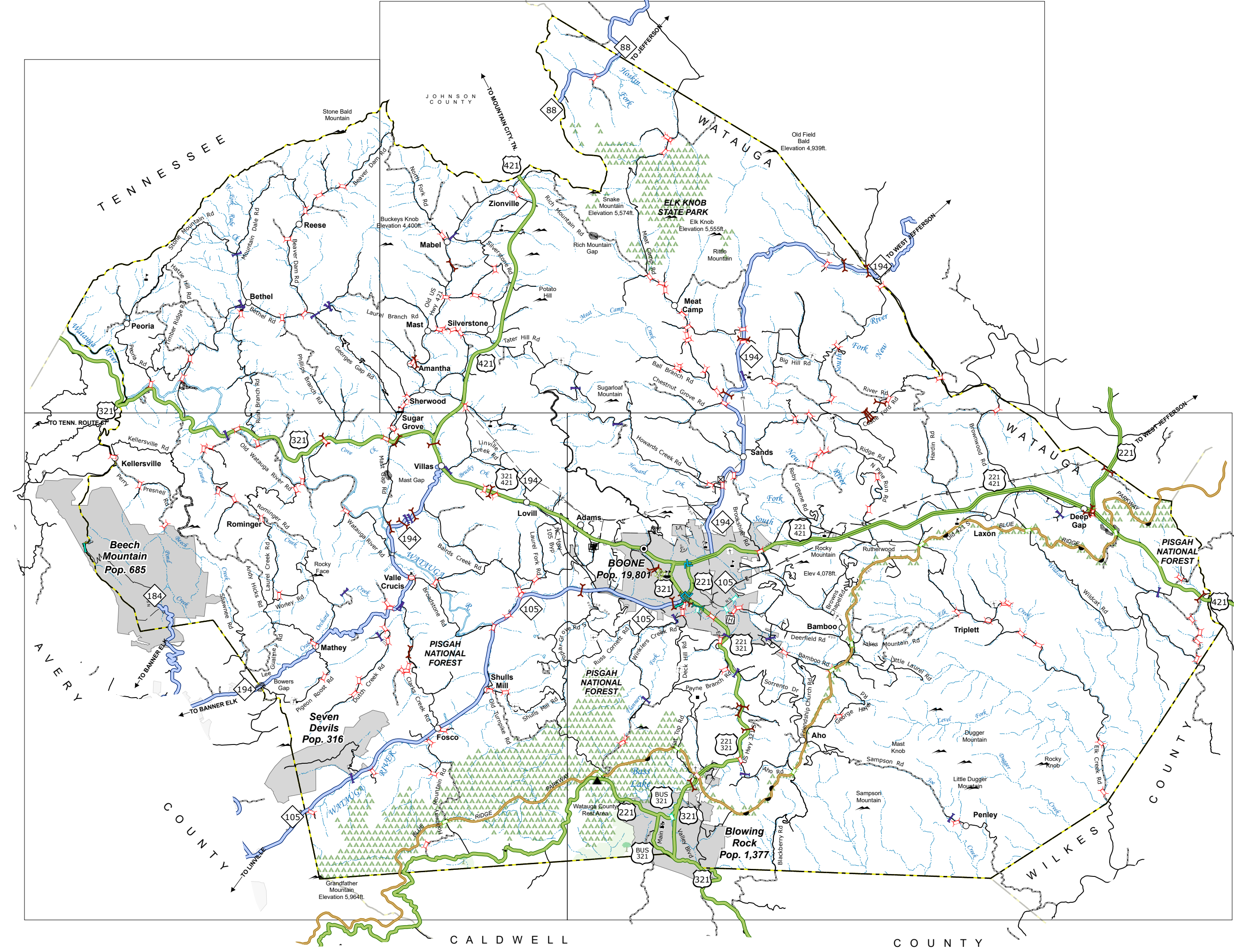
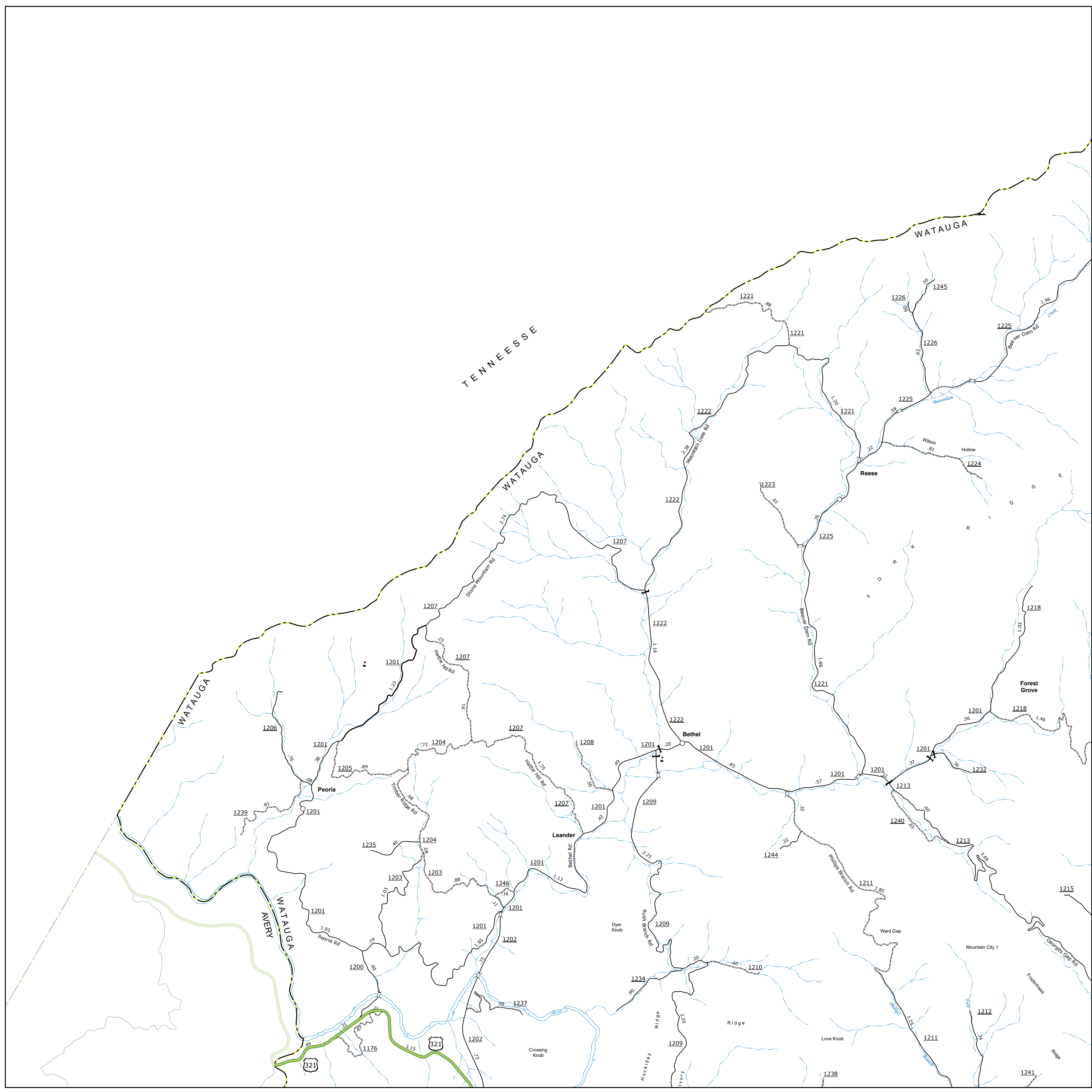
TERMS OF USE: The Mapping Division is pleased to provide the most accurate and current information possible. Map data is compiled from the data provided and may vary. The North Carolina Department of Transportation will not be held liable for any errors or omissions on this map. This is a digital copy of this map or additional map products. Visit www.ncdot.gov for more information.

Sheet Key



LEGEND

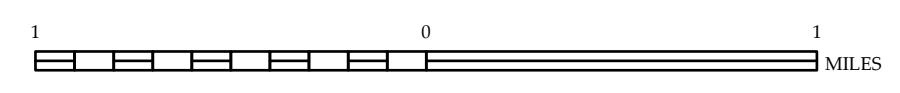
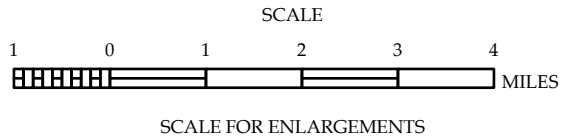
- INTERSTATE US NC
- Divided Hwy Undivided Hwy
- BLUE RIDGE PARKWAY
- UNPAVED SURFACED ROAD
- HARD SURFACED ROAD
- NON-SYSTEM ROAD
- PROVISIONALLY DRAWN ROAD
- PROJECTED LOCATION
- INTERSECTION DISTANCE
- STANDARD ROAD BRIDGE
- RAILROAD BRIDGE
- DRAW SPAN ON BRIDGE
- PEDESTRIAN BRIDGE
- PEDESTRIAN WALKWAY
- PEDESTRIAN UNDERPASS
- VEHICULAR UNDERPASS
- TUNNEL
- CULVERT
- PIPE
- INTERSTATE HIGHWAY
- U.S. NUMBERED HIGHWAY
- N.C. NUMBERED HIGHWAY
- U.S. NUMBERED BICYCLE ROUTE
- N.C. NUMBERED BICYCLE ROUTE
- INTERSTATE INTERCHANGE NUMBER
- SECONDARY ROAD NUMBER
- UTILITY LINES
- RAILROAD LINE
- RAILROAD STATION
- INSET AREA
- STATE LINE
- COUNTY LINE
- SMOOTHED URBAN BOUNDARIES
- CITY LIMITS
- FERRY ROUTE AND RAMP
- NARROW CREEK OR STREAM
- WIDE RIVER OR CREEK
- RESERVOIR, POND OR LAKE W/ ISLAND
- DAM OR DAM WITH LOCK
- WATERFALL
- SWAMP
- COMMUNITY
- COUNTY SEAT
- SCHOOL
- COLLEGE OR UNIVERSITY
- HOSPITAL
- COAST GUARD STATION
- CHURCH
- CHURCH WITH CEMETERY
- CEMETERY
- PURCH STATION
- CORRECTION OR PENAL INSTITUTION
- QUARRY
- MINE OR PIT
- HIGHWAY GARAGE OR MAINT. YARD
- HIGHWAY DIV. OR DIST. OFFICE
- MILITARY POST
- WEIGH STATION
- FAIRGROUNDS
- HISTORICAL SITE
- POINTS OF INTEREST
- POST OFFICE
- STATE FOREST
- LIGHTHOUSE
- MOUNTAIN SUMMIT
- MOUNTAIN GAP
- OVERLOOK
- REST AREA
- VISITOR CTR REST AREA
- WELCOME CTR REST AREA
- AIRPORT
- MILITARY AIRPORT
- NATIONAL / STATE FOREST BOUNDARY
- WILDLIFE REFUGE
- NATIONAL / STATE PARK BOUNDARY
- GAME LANDS BOUNDARY
- MILITARY RESERVATION BOUNDARY
- INDIAN RESERVATION BOUNDARY



WATAUGA COUNTY

NORTH CAROLINA

PREPARED BY THE
NORTH CAROLINA DEPARTMENT OF TRANSPORTATION
OPERATIONS PROGRAM MANAGEMENT UNIT - MAPPING SECTION
IN COOPERATION WITH THE
U.S. DEPARTMENT OF TRANSPORTATION
FEDERAL HIGHWAY ADMINISTRATION



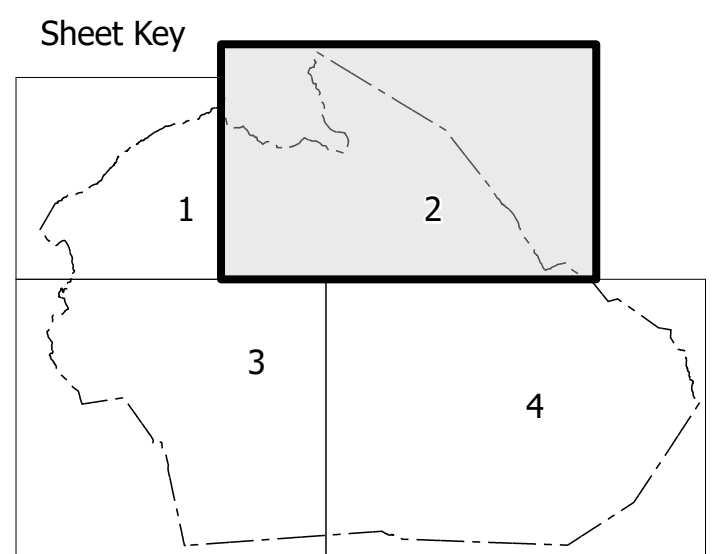
SCALE FOR ENLARGEMENTS

0 1 2 3 4 MILES

0 1 MILES

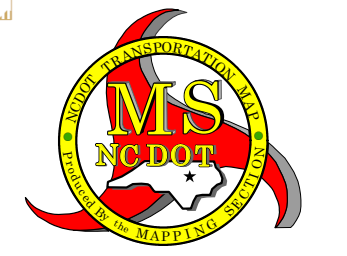
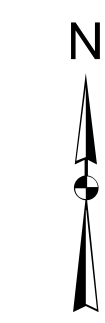
NORTH CAROLINA PLANE COORDINATE SYSTEM
LAMBERT CONFORMAL CONIC PROJECTION

STATE OF NORTH CAROLINA
 DIVISION OF TRANSPORTATION
 OPERATIONS PROGRAM MANAGEMENT UNIT - MAPPING SECTION
 10/17/2018 10:41:42 AM



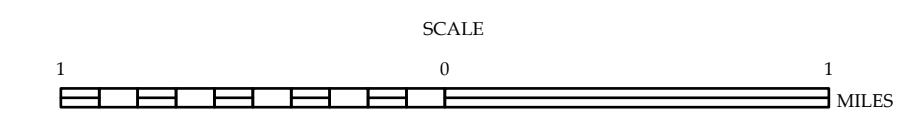
LEGEND

	INTERSTATE		US		NC		Divided Hwy
							Undivided Hwy
							BLUE RIDGE PARKWAY
							UNPAVED SURFACED ROAD
							HARD SURFACED ROAD
							NON-SYSTEM ROAD
							PROVISIONALLY DRAWN ROAD
							PROJECTED LOCATION
							INTERSECTION DISTANCE
							STANDARD ROAD BRIDGE
							RAILROAD BRIDGE
							DRAW SPAN ON BRIDGE
							PEDESTRIAN BRIDGE
							PEDESTRIAN WALKWAY
							PEDESTRIAN UNDERPASS
							VEHICULAR UNDERPASS
							TUNNEL
							CULVERT
							PIPE
							INTERSTATE HIGHWAY
							U.S. NUMBERED HIGHWAY
							N.C. NUMBERED HIGHWAY
							U.S. NUMBERED BICYCLE ROUTE
							N.C. NUMBERED BICYCLE ROUTE
							INTERSTATE INTERCHANGE NUMBER
							SECONDARY ROAD NUMBER
							UTILITY LINES
							RAILROAD LINE
							RAILROAD STATION
							INSET AREA
							STATE LINE
							COUNTY LINE
							SMOOTHED URBAN BOUNDARIES
							CITY LIMITS
							FERRY ROUTE AND RAMP
							NARROW CREEK OR STREAM
							WIDE RIVER OR CREEK
							RESERVOIR, POND OR LAKE W/ ISLAND
							DAM OR DAM WITH LOCK
							WATERFALL
							SWAMP
							COMMUNITY
							COUNTY SEAT
							SCHOOL
							COLLEGE OR UNIVERSITY
							HOSPITAL
							COAST GUARD STATION
							CHURCH
							CHURCH WITH CEMETERY
							CEMETERY
							PATROL STATION
							CORRECTION OR PENAL INSTITUTION
							QUARRY
							MINE OR PIT
							HIGHWAY GARAGE OR MAINT. YARD
							HIGHWAY DIV. OR DIST. OFFICE
							MILITARY POST
							WEIGH STATION
							FAIRGROUNDS
							HISTORICAL SITE
							POST OFFICE
							STATE FOREST
							LIGHTHOUSE
							MOUNTAIN SUMMIT
							MOUNTAIN GAP
							OVERLOOK
							REST AREA
							VISITOR CTR REST AREA
							WELCOME CTR REST AREA
							AIRPORT
							MILITARY AIRPORT
							NATIONAL / STATE FOREST BOUNDARY
							WILDLIFE REFUGE
							NATIONAL / STATE PARK BOUNDARY
							GAME LANDS BOUNDARY
							MILITARY RESERVATION BOUNDARY
							INDIAN RESERVATION BOUNDARY

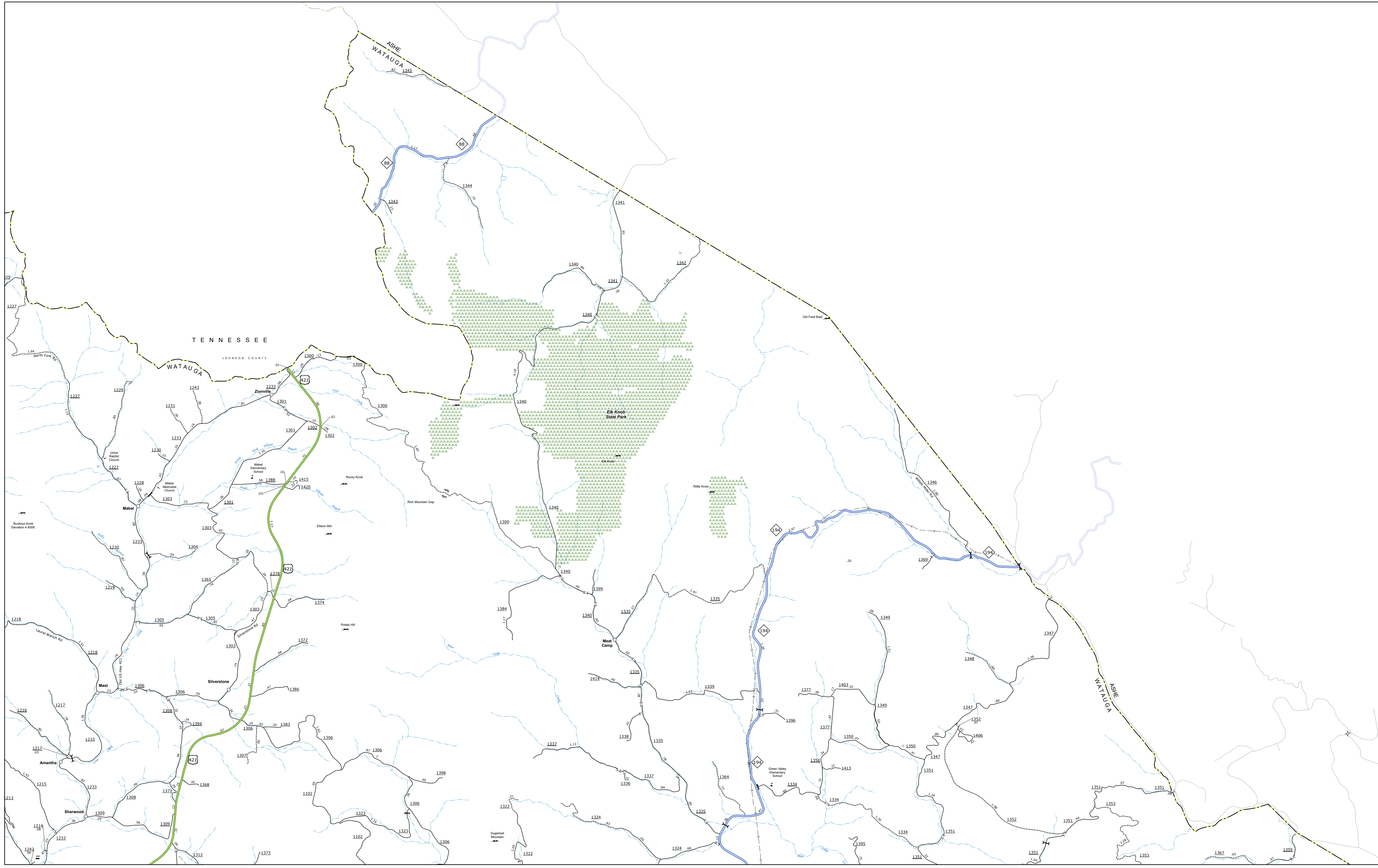


WATAUGA COUNTY NORTH CAROLINA

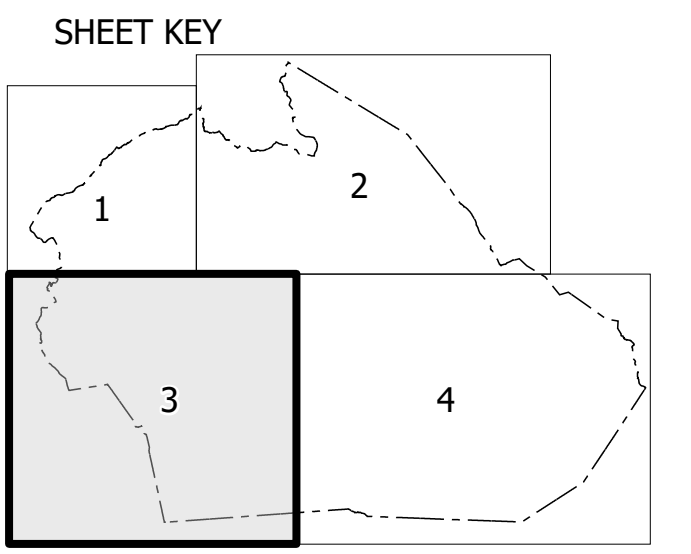
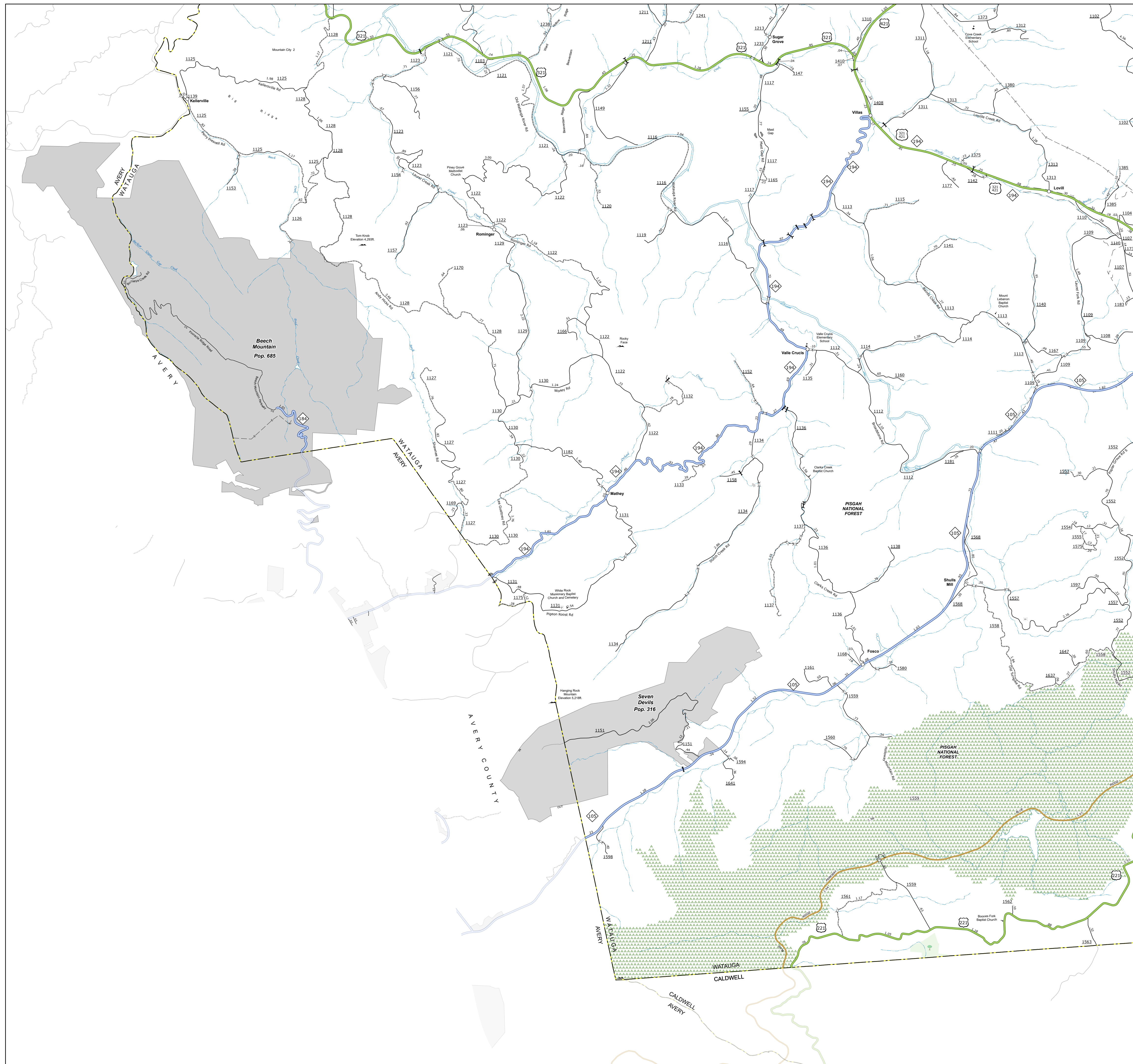
PREPARED BY THE
 NORTH CAROLINA DEPARTMENT OF TRANSPORTATION
 OPERATIONS PROGRAM MANAGEMENT UNIT - MAPPING SECTION
 IN COOPERATION WITH THE
 U.S. DEPARTMENT OF TRANSPORTATION
 FEDERAL HIGHWAY ADMINISTRATION



NORTH CAROLINA PLANE COORDINATE SYSTEM
 LAMBERT CONFORMAL CONIC PROJECTION
 SHEET 2 of 4

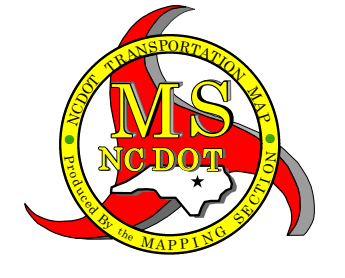
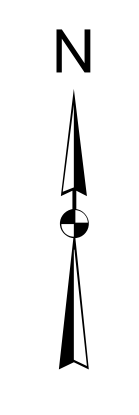


REMARKS: This map is intended to provide general information only. It is not intended to be used for any purpose other than that for which it was prepared. The North Carolina Department of Transportation and its employees are not liable for any errors in this map data. The original copies of this map or additional map products, visit <http://www.ncdot.gov/transportation/Information/MapProducts.aspx>.



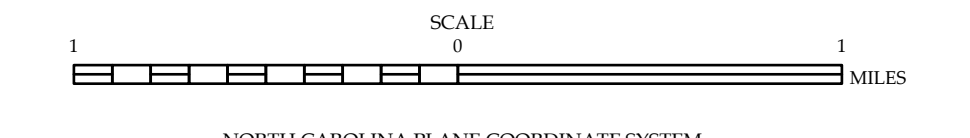
LEGEND

- INTERSTATE US NC
- UNPAVED SURFACED ROAD
- HARD SURFACED ROAD
- NON-SYSTEM ROAD
- PROVISIONALLY DRAWN ROAD
- PROJECTED LOCATION
- INTERSECTION DISTANCE
- STANDARD ROAD BRIDGE
- RAILROAD BRIDGE
- DRAW SPAN ON BRIDGE
- PEDESTRIAN BRIDGE
- PEDESTRIAN WALKWAY
- PEDESTRIAN UNDERPASS
- VEHICULAR UNDERPASS
- TUNNEL
- CULVERT
- PIPE
- INTERSTATE HIGHWAY
- U.S. NUMBERED HIGHWAY
- N.C. NUMBERED HIGHWAY
- U.S. NUMBERED BICYCLE ROUTE
- N.C. NUMBERED BICYCLE ROUTE
- INTERSTATE INTERCHANGE NUMBER
- SECONDARY ROAD NUMBER
- UTILITY LINES
- RAILROAD LINE
- RAILROAD STATION
- INSET AREA
- STATE LINE
- COUNTY LINE
- SMOOTHED URBAN BOUNDARIES
- CITY LIMITS
- FERRY ROUTE AND RAMP
- NARROW CREEK OR STREAM
- WIDE RIVER OR CREEK
- RESERVOIR, POND OR LAKE W/ ISLAND
- DAM OR DAM WITH LOCK
- WATERFALL
- SWAMP
- COMMUNITY
- COUNTY SEAT
- SCHOOL
- COLLEGE OR UNIVERSITY
- HOSPITAL
- COAST GUARD STATION
- CHURCH
- CHURCH WITH CEMETERY
- CEMETERY
- PATROL STATION
- CORRECTION OR PENAL INSTITUTION
- QUARRY
- MINE OR PIT
- HIGHWAY GARAGE OR MAINT. YARD
- HIGHWAY DIV. OR DIST. OFFICE
- MILITARY POST
- WEIGH STATION
- FAIRGROUNDS
- HISTORICAL SITE
- POINTS OF INTEREST
- POST OFFICE
- STATE FOREST
- LIGHTHOUSE
- MOUNTAIN SUMMIT
- MOUNTAIN GAP
- OVERLOOK
- REST AREA
- VISITOR CTR. REST AREA
- WELCOME CTR. REST AREA
- AIRPORT
- MILITARY AIRPORT
- NATIONAL / STATE FOREST BOUNDARY
- WILDLIFE REFUGE
- NATIONAL / STATE PARK BOUNDARY
- GAME LANDS BOUNDARY
- MILITARY RESERVATION BOUNDARY
- INDIAN RESERVATION BOUNDARY

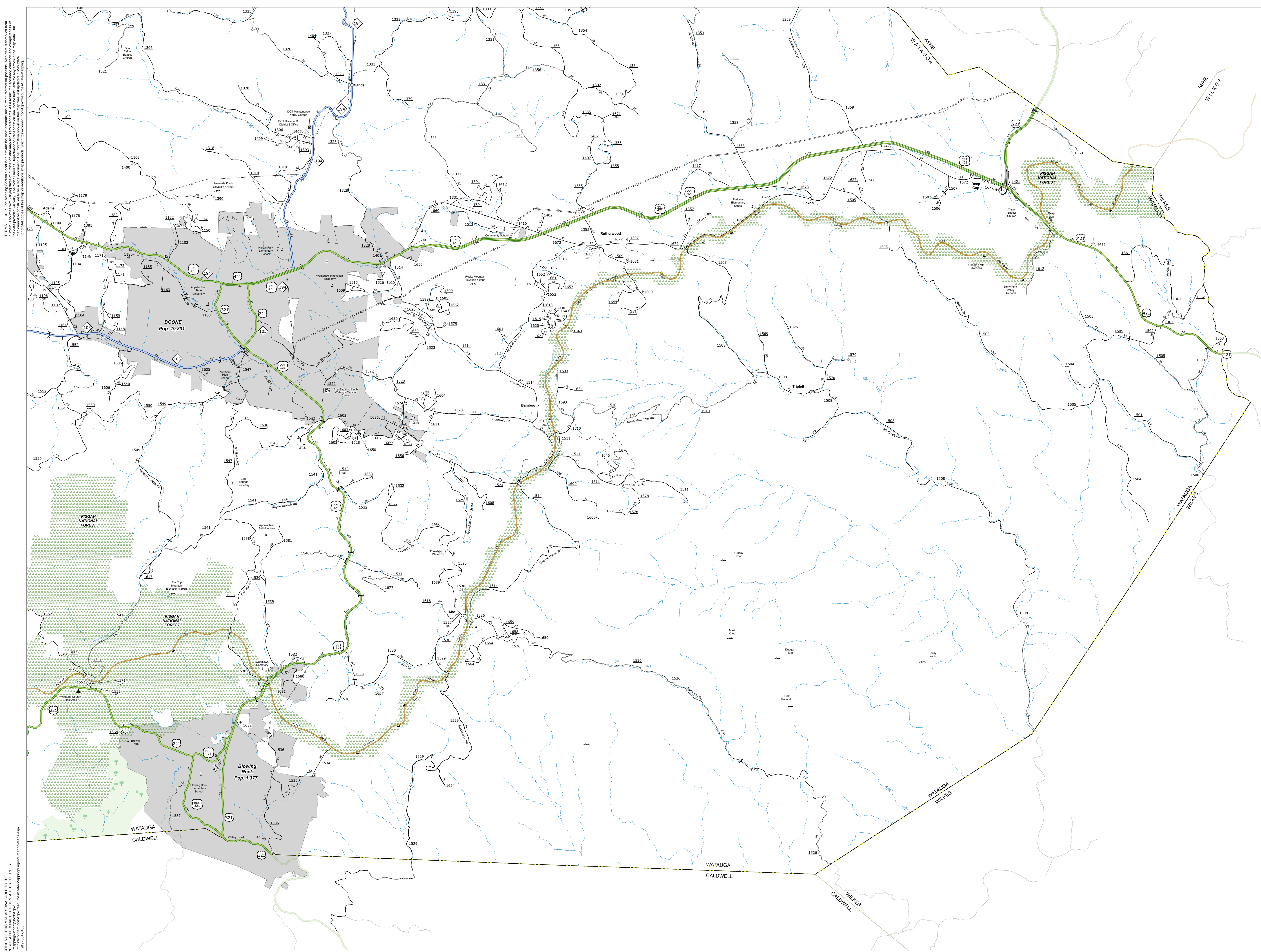


WATAUGA COUNTY
NORTH CAROLINA

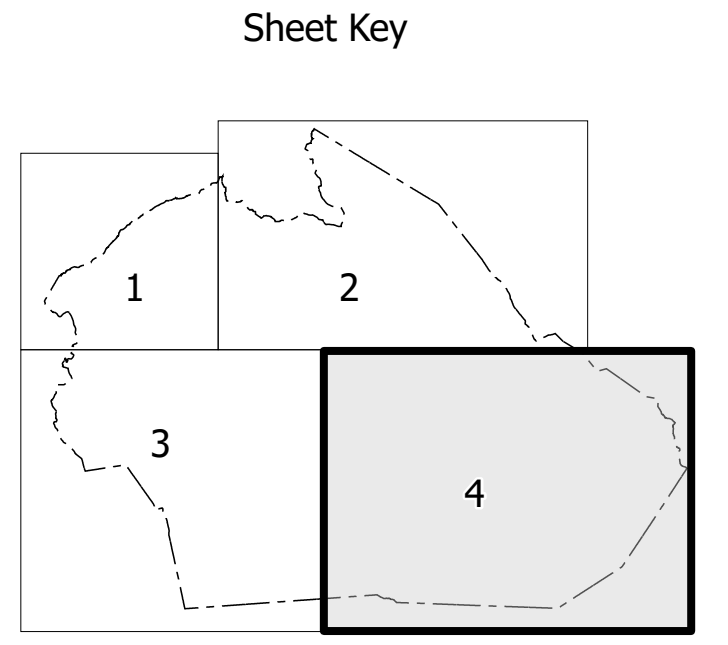
PREPARED BY THE
NORTH CAROLINA DEPARTMENT OF TRANSPORTATION
OPERATIONS PROGRAM MANAGEMENT UNIT - MAPPING SECTION
IN COOPERATION WITH THE
U.S. DEPARTMENT OF TRANSPORTATION
FEDERAL HIGHWAY ADMINISTRATION



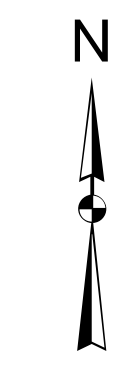
NORTH CAROLINA PLANE COORDINATE SYSTEM
LAMBERT CONFORMAL CONIC PROJECTION



TERMS OF USE: This MapShare is provided to you for informational purposes only. It is not intended to be used as a legal document. Map data is compiled from the data provided by the North Carolina Department of Transportation and the National Center for Geographic Information Science. The data is provided as is. The North Carolina Department of Transportation and the National Center for Geographic Information Science are not responsible for any errors or omissions in this map data. This map data is provided as a service to the public and is not intended to be used as a legal document. For a full list of the data sources used in this map, visit <https://www.ncdot.gov/MapShare/About/MapShare.aspx>.



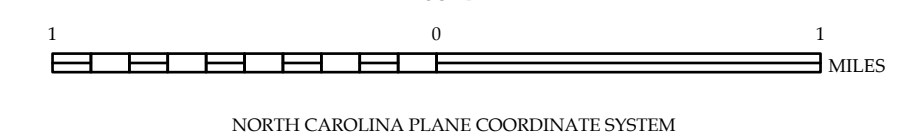
- LEGEND**
- INTERSTATE US NC Divided Hwy
 - UNPAVED SURFACED ROAD
 - HARD SURFACED ROAD
 - NON-SYSTEM ROAD
 - PROVISIONALLY DRAWN ROAD
 - PROJECTED LOCATION
 - INTERSTATE TRAIL DISTANCE
 - STANDARD ROAD BRIDGE
 - RAILROAD BRIDGE
 - DRAWN ON BRIDGE
 - PEDESTRIAN WALKWAY
 - PEDESTRIAN UNDERPASS
 - VEHICULAR UNDERPASS
 - TUNNEL
 - CULVERT
 - PIPE
 - INTERSTATE HIGHWAY
 - U.S. NUMBERED HIGHWAY
 - N.C. NUMBERED HIGHWAY
 - U.S. NUMBERED BICYCLE ROUTE
 - N.C. NUMBERED BICYCLE ROUTE
 - INTERSTATE INTERCHANGE NUMBER
 - SECONDARY ROAD NUMBER
 - UTILITY LINES
 - RAILROAD LINE
 - RAILROAD STATION
 - INSIT AREA
 - STATE LINE
 - COUNTY LINE
 - UNBORDERED URBAN BOUNDARIES
 - CITY LIMITS
 - FERRY ROUTE AND RAMP
 - NARROW CREEK OR STREAM
 - WIDE RIVER OR CREEK
 - RESERVOIR, POND OR LAKE W/ ISLAND
 - DAM OR DAM WITH LOCK
 - WATERFALL
 - SWAMP
 - COMMUNITY
 - COUNTY SEAT
 - SCHOOL
 - COLLEGE OR UNIVERSITY
 - HOSPITAL
 - COAST GUARD STATION
 - CHURCH
 - CHURCH WITH CEMETERY
 - CEMETERY
 - PARK STATION
 - CORRECTION OR PENAL INSTITUTION
 - QUARRY
 - MINE OR PIT
 - HIGHWAY GARAGE OR MAINT. YARD
 - HIGHWAY DIV. OR DIST. OFFICE
 - MILITARY POST
 - WEIGH STATION
 - FARMS
 - HISTORICAL SITE
 - POINTS OF INTEREST
 - POST OFFICE
 - STATE FOREST
 - LIGHTHOUSE
 - MOUNTAIN SUMMIT
 - MOUNTAIN GAP
 - OVERLOOK
 - BEST AREA
 - VISITOR CTR REST AREA
 - WELCOME CTR REST AREA
 - AIRPORT
 - MILITARY AIRPORT
 - NATIONAL / STATE FOREST BOUNDARY
 - WILDLIFE REFUGE
 - NATIONAL / STATE PARK BOUNDARY
 - GAME LANDS BOUNDARY
 - MILITARY RESERVATION BOUNDARY
 - INDIAN RESERVATION BOUNDARY



WATAUGA COUNTY

NORTH CAROLINA

PREPARED BY THE
 NORTH CAROLINA DEPARTMENT OF TRANSPORTATION
 OPERATIONS PROGRAM MANAGEMENT UNIT - MAPPING SECTION
 IN COOPERATION WITH THE
 U.S. DEPARTMENT OF TRANSPORTATION
 FEDERAL HIGHWAY ADMINISTRATION



NORTH CAROLINA PLANE COORDINATE SYSTEM
 LAMBERT CONFORMAL CONIC PROJECTION