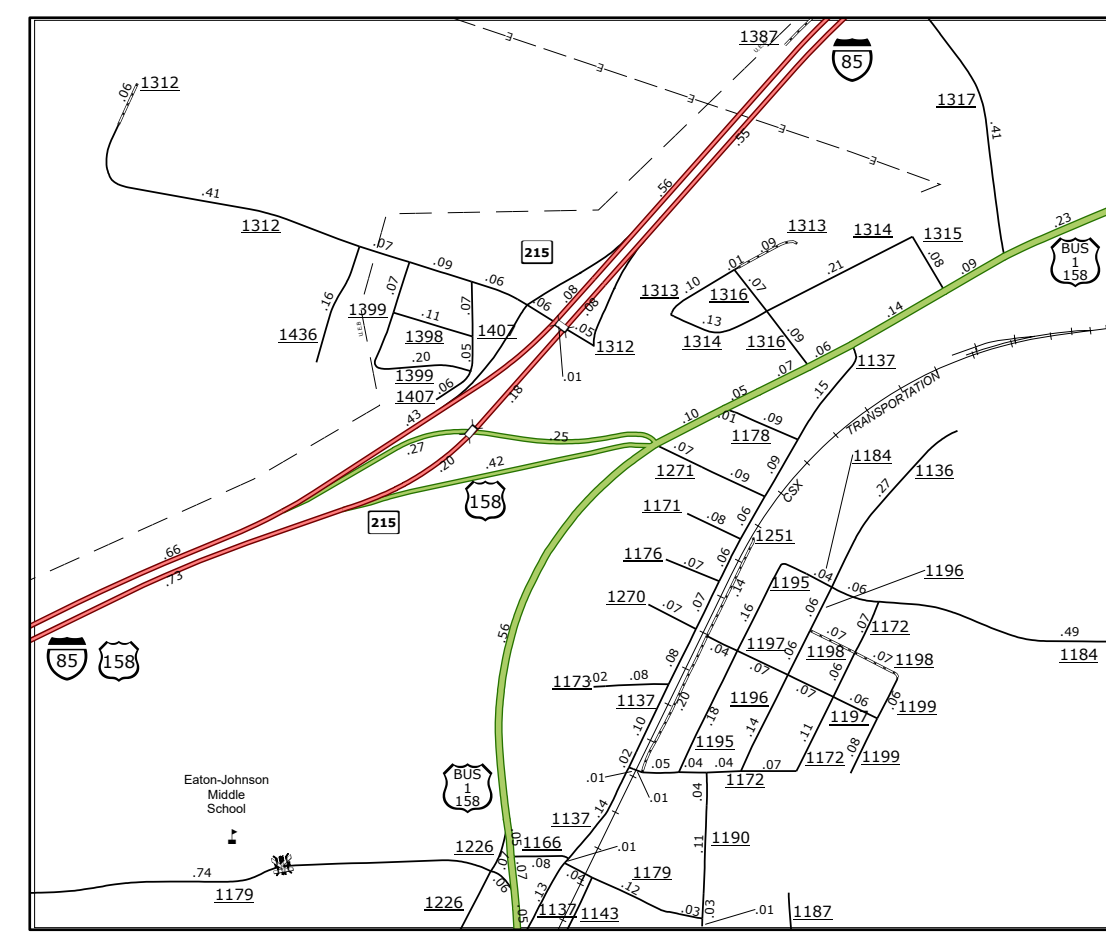
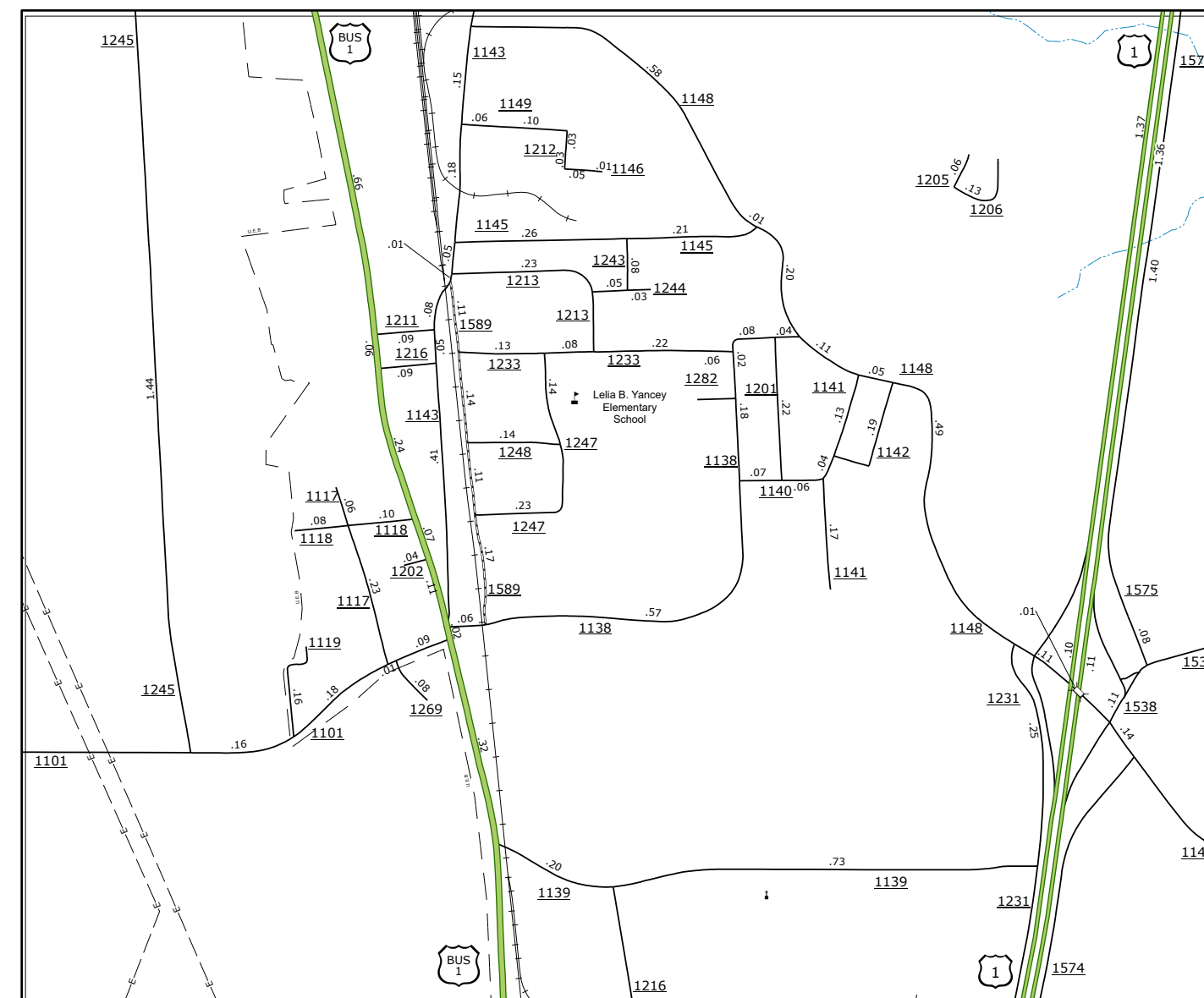
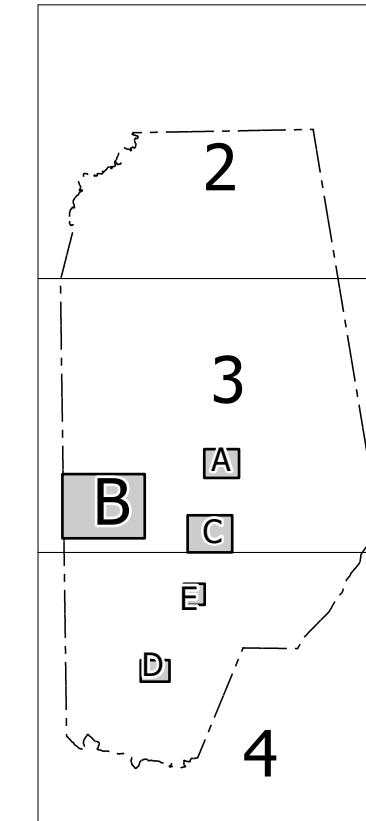


B

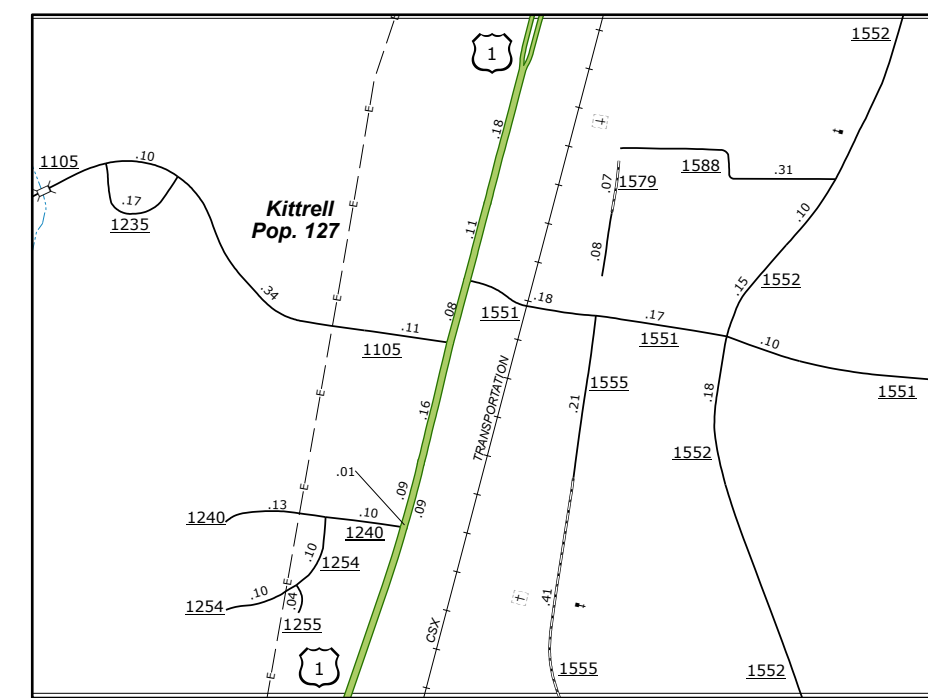


A

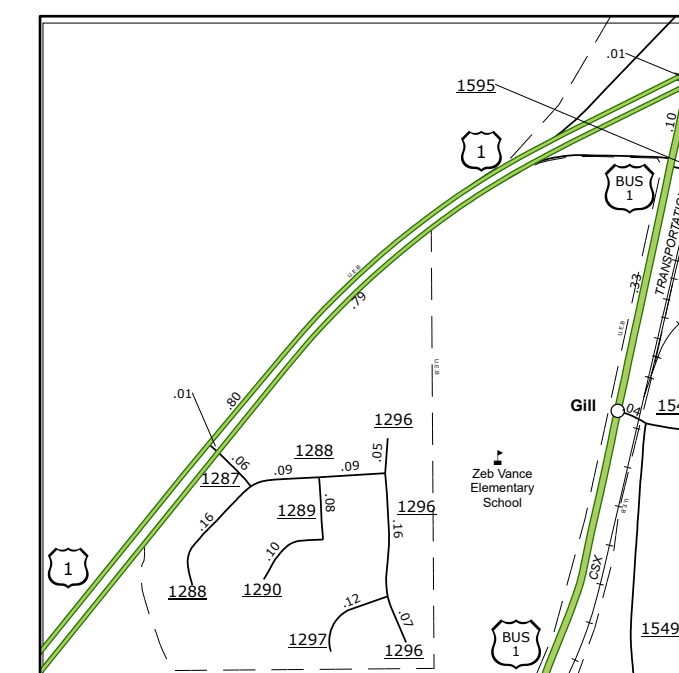
Sheet Key



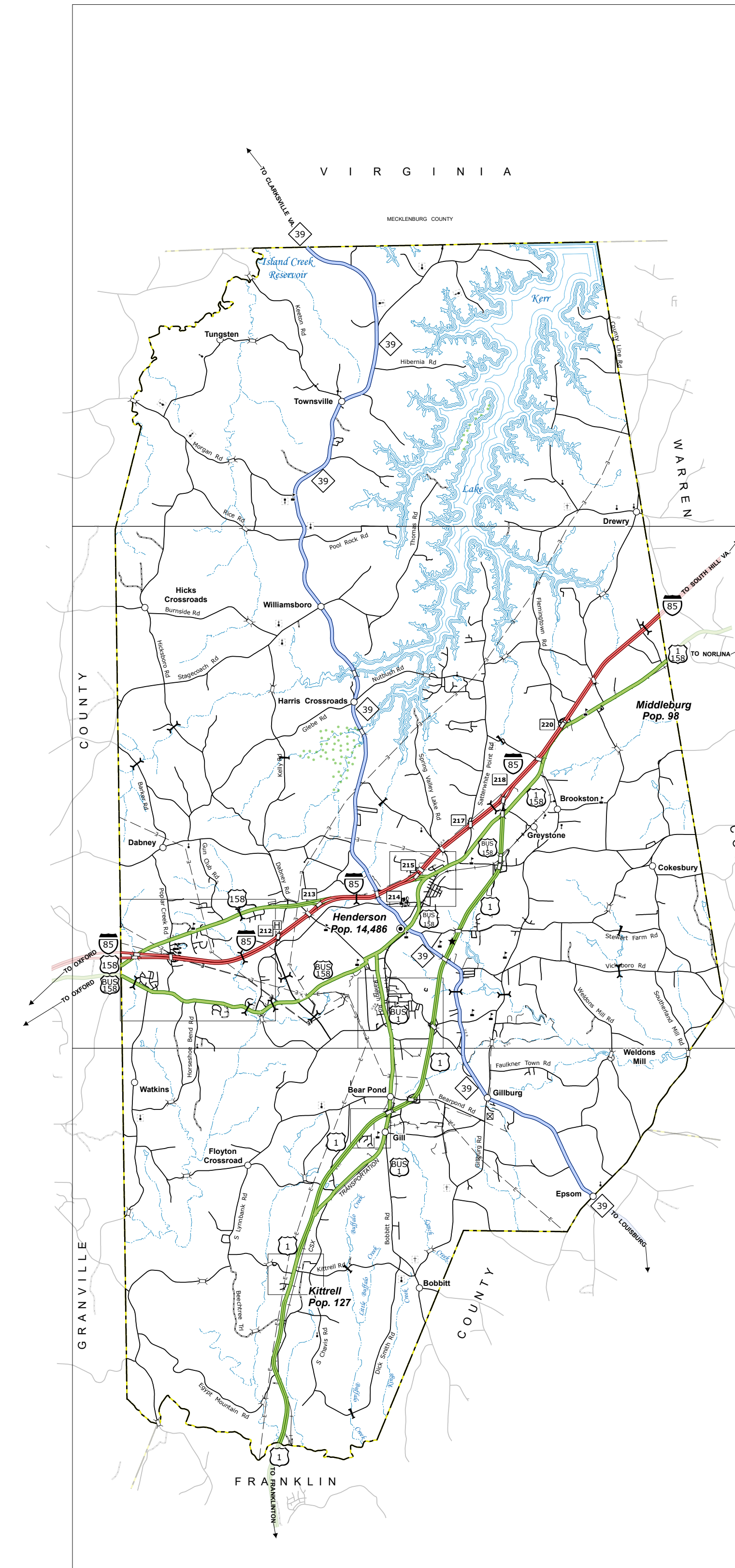
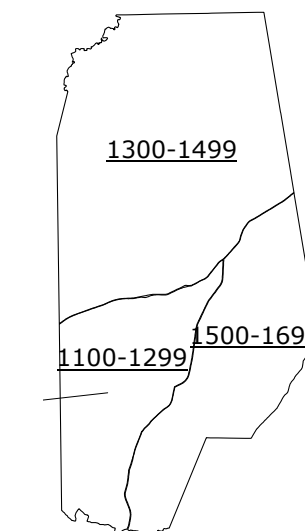
C



D

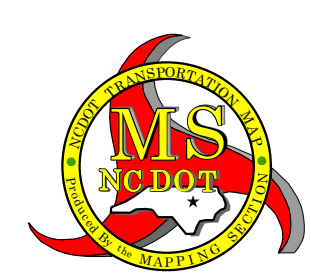
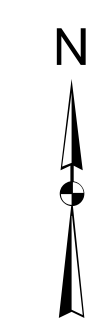


E



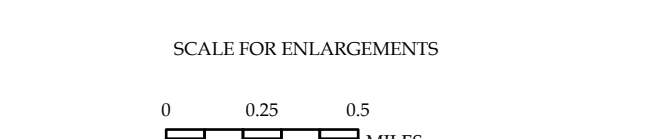
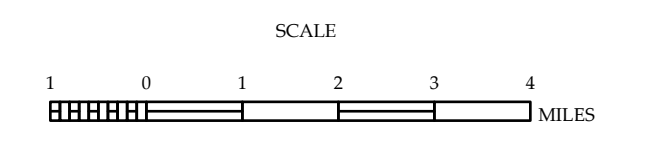
LEGEND

- INTERSTATE US NC Divided Hwy Undivided Hwy
- UNPAVED UNIMPROVED ROAD
- PAVED UNIMPROVED ROAD
- PAVED IMPROVED ROAD
- PROPOSED IMPROVED ROAD
- PROPOSED UNIMPROVED ROAD
- PROPOSED UNPAVED ROAD
- PROPOSED UNPAVED ROAD
- STANDARD ROAD BRIDGE
- RAILROAD BRIDGE
- IRON SPAN BRIDGE
- PEDESTRIAN BRIDGE
- PEDESTRIAN UNDERPASS
- VEHICULAR UNDERPASS
- TUNNEL
- CULVERT
- PIVOT
- INTERSTATE HIGHWAY
- U.S. NUMBERED HIGHWAY
- U.S. NUMBERED HIGHWAY
- U.S. NUMBERED BIWAY
- U.S. NUMBERED BIWAY ROUTE
- INTERSTATE INTERCHANGE NUMBER
- SECONDARY ROAD NUMBER
- UTILITY LINE
- RAILROAD LINE
- RAILROAD STATION
- RAILROAD STATION
- RAILROAD STATION
- CITY LINE
- CITY LINE
- CITY LINE
- FERRY ROUTE
- NARROW GUESS FOR STREAM
- WIDE RIVER OR CREEK
- BEACH, POOL OR LAKE W/ ISLAND
- DAM OR DAM WITH LOCK
- WATERFALL
- SWAMP
- COMMUNITY, TOWN OR CITY CENTER
- COUNTY SEAT
- SCHOOL
- COLLEGE OR UNIVERSITY
- HOSPITAL
- COAST GUARD STATION
- CHURCH
- CHURCH WITH CEMETERY
- CEMETERY
- PRISON STATION
- CORRECTION OR PENAL INSTITUTION
- OCULARY
- MINE OR PIT
- HIGHWAY GARAGE OR MAINT. YARD
- HIGHWAY ID. OR DIST. OFFICE
- MILL OR DYER
- WEIGH STATION
- FARMGROUNDS
- HISTORICAL SITE
- POINTS OF INTEREST
- STATE FOREST
- LIGHTHOUSE
- MONUMENT MONUMENT
- OVERLOOK
- REST AREA
- VISITOR CENTER REST AREA
- WELCOMING CENTER REST AREA
- AIRPORT
- MILITARY AIRPORT
- HELIPAD
- NATIONAL STATE FOREST BOUNDARY
- WILDLIFE REFUGE
- NATIONAL STATE PARK BOUNDARY
- GAME LANDS BOUNDARY
- MILITARY RESERVATION BOUNDARY
- INDIAN RESERVATION BOUNDARY



**VANCE COUNTY
NORTH CAROLINA**

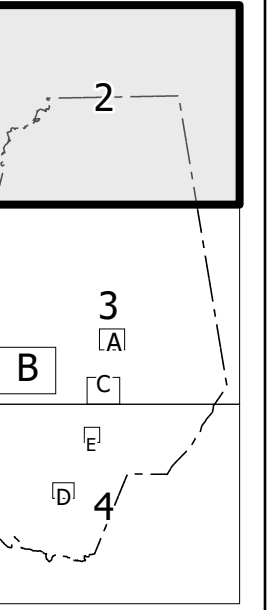
PREPARED BY THE
NORTH CAROLINA DEPARTMENT OF TRANSPORTATION
OPERATIONS PROGRAM MANAGEMENT UNIT - MAPPING SECTION
IN COOPERATION WITH THE
U.S. DEPARTMENT OF TRANSPORTATION
FEDERAL HIGHWAY ADMINISTRATION



NORTH CAROLINA PLANE COORDINATE SYSTEM
LAMBERT CONFORMAL CONIC PROJECTION

COPIES OF THIS MAP ARE AVAILABLE TO THE PUBLIC AT NOMINAL COST. CONTACT US TO ORDER: maps@ncdot.gov or (919) 844-4400. <https://www.ncdot.gov/resources/State-Mapping/Pages/Ordering-Maps.aspx>

TERMS OF USE: The Mapping Section's goal is to provide the most accurate and current information possible. Map data is compiled from numerous sources with varying dates of publication and map accuracy standards. As a result, the accuracy, currency, and completeness of the data provided will vary. The North Carolina Department of Transportation shall not be held liable for any errors in the map data. This map cannot be construed to be a legal document. The information shown on this map was last updated in April 2024. For digital copies of this map or additional map products, visit <https://www.ncdot.gov/resources/State-Mapping>.



TERMS OF USE: The Mapper's liability is limited to the extent of the information provided. Mapper shall not be responsible for any errors or omissions in the data, or for any consequences arising from the use of the data. The information shown on this map was last updated in August 2024. For digital copies of this map or additional map products, visit <https://www.ncdot.gov/Information/Maps/Products/Pages/Products.aspx>

COPYRIGHT: THIS MAP WAS MADE BY THE PUBLIC AT NORMAL COST. CONTACT US TO ORDER: <https://www.ncdot.gov/Information/Maps/Products/Pages/Products.aspx>

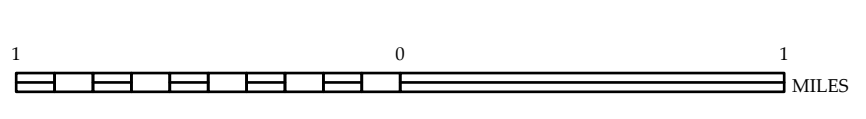


- LEGEND**
- INTERSTATE US NC
 - Decadal Hwy
 - Undeveloped Hwy
 - HULE RIDGE PARKWAY
 - CONCRETE REPAVED ROAD
 - HARD SURFACED ROAD
 - NON-SYSTEM ROAD
 - PROFESSIONALLY DRAWN ROAD
 - PROPOSED LOCATION
 - INTERSECTION DISTANCE
 - STANDARD ROAD BRIDGE
 - RAILROAD BRIDGE
 - DRAW SPAN ON BRIDGE
 - PIEDMOUNT BRIDGE
 - PIEDMOUNT WALKWAY
 - PIEDMOUNT UNDERPASS
 - VIADUCT UNDERPASS
 - TUNNEL
 - LUVERT
 - POLE
 - INTERSTATE HIGHWAY
 - U.S. NUMBERED HIGHWAY
 - U.S. NUMBERED HIGHWAY
 - U.S. NUMBERED BI-CYCLE ROUTE
 - N.C. NUMBERED BI-CYCLE ROUTE
 - INTERSTATE INTERCHANGE NUMBER
 - SECONDARY ROAD NUMBER
 - UTILITY LINES
 - RAILROAD LINE
 - RAILROAD STATION
 - POST AREA
 - STATE LINE
 - COUNTY LINE
 - CITY LIMITS
 - FERRY ROUTE
 - NARROW CREEK OR STREAM
 - WIDE RIVER OR CREEK
 - RESERVOIR, POND OR LAKE W/ ISLAND
 - DAM OR DAM WITH LAKE
 - WATERFALL
 - SWAMP
 - COMMUNITY, TOWN OR CITY CENTER
 - COUNTY SEAT
 - SCHOOL
 - COLLEGE OR UNIVERSITY
 - HOSPITAL
 - CRUISE SHIP STATION
 - CHURCH
 - CHURCH WITH CEMETERY
 - CEMETERY
 - PARK STATION
 - CORRECTION OR PENAL INSTITUTION
 - QUARRY
 - RAILROAD YARD
 - HIGHWAY GARAGE OR MAINT. YARD
 - HIGHWAY DIST. OR DIST. OFFICE
 - MILITARY POST
 - WRECK STATION
 - FARGO STATION
 - HISTORICAL SITE
 - POINT OF INTEREST
 - STATE FOREST
 - LEAD MINING
 - MOUNTAIN SUMMIT
 - OVERLOOK
 - REST AREA
 - VISITOR CENTER REST AREA
 - WILDCAM CENTER REST AREA
 - AIRPORT
 - MILITARY AIRPORT
 - HELIPORT
 - NATIONAL STATE FOREST BOUNDARY
 - WILDLIFE REFUGE
 - NATIONAL STATE PARK BOUNDARY
 - GAME LANDS BOUNDARY
 - MILITARY RESERVATION BOUNDARY
 - INDIAN RESERVATION BOUNDARY

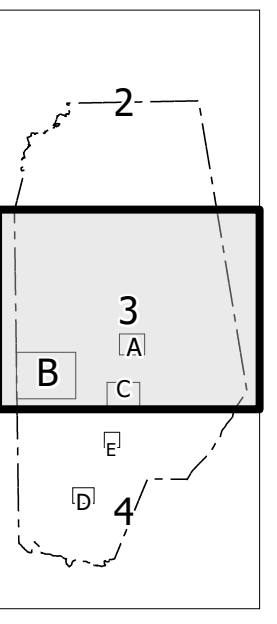


**VANCE COUNTY
NORTH CAROLINA**

PREPARED BY THE
NORTH CAROLINA DEPARTMENT OF TRANSPORTATION
OPERATIONS PROGRAM MANAGEMENT UNIT - MAPPING SECTION
IN COOPERATION WITH THE
U.S. DEPARTMENT OF TRANSPORTATION
FEDERAL HIGHWAY ADMINISTRATION

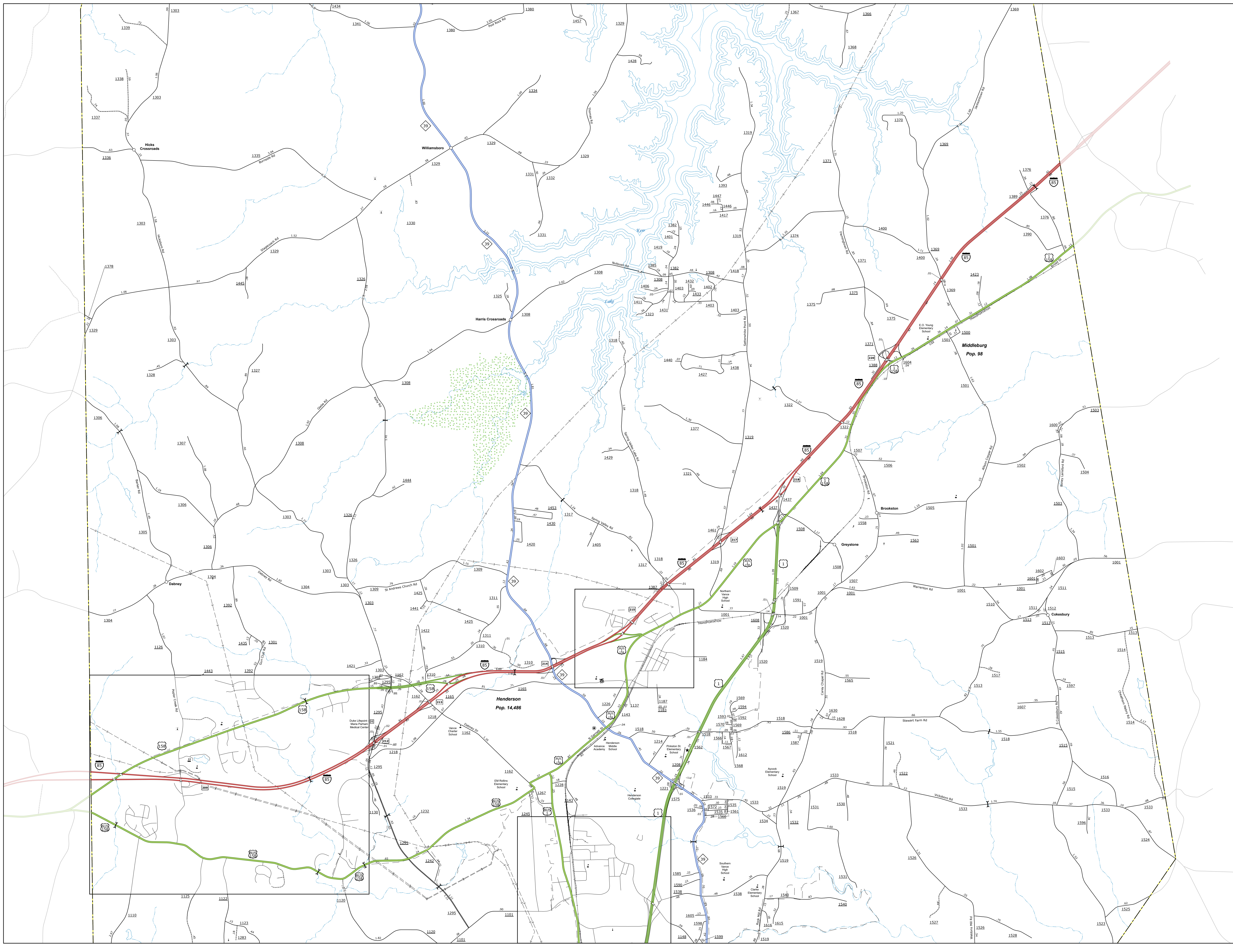


NORTH CAROLINA PLANE COORDINATE SYSTEM
LAMBERT CONFORMAL CONIC PROJECTION



TERMS OF USE: The Mapping Products are to be used for general information purposes. Map data is compiled from various sources with varying degrees of accuracy. As a result, the accuracy, currency, and completeness of this information cannot be guaranteed. The information shown on this map was last updated in April 2024. For digital copies of this map or additional map products, visit <https://www.ncdot.gov/Information/MapProducts/Pages/MapProducts.aspx>

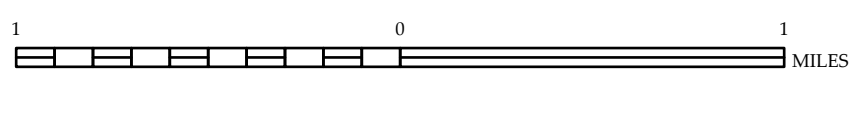
COPYRIGHT: THIS MAP IS AVAILABLE TO THE PUBLIC AT NO CHARGE. CONTACT US TO OBTAIN: maps@ncdot.gov OR <https://www.ncdot.gov/Information/MapProducts/Pages/MapProducts.aspx>



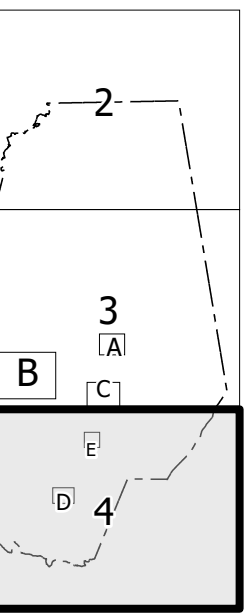
- LEGEND**
- INTERSTATE US NC
 - US HIGHWAY
 - STATE ROAD
 - LOCAL ROAD
 - UNPAVED ROAD
 - BLUES RIDGE PARKWAY
 - CONCRETE-PAVED ROAD
 - HARD SURFACED ROAD
 - NON-SYSTEM ROAD
 - PROFESSIONALLY SURVEYED ROAD
 - PROPOSED LOCATION
 - INTERSECTION PRESENCE
 - STANDARD ROAD BRIDGE
 - RAILROAD BRIDGE
 - DRAW SPAN ON BRIDGE
 - FEET-DEEP UNDERPASS
 - VEHICLE UNDERPASS
 - TUNNEL
 - FLUYERT
 - RAILROAD
 - INTERSTATE HIGHWAY
 - U.S. NUMBERED HIGHWAY
 - N.C. NUMBERED HIGHWAY
 - N.C. NUMBERED BICYCLE ROUTE
 - INTERSTATE INTERCHANGE NUMBER
 - SECONDARY ROAD NUMBER
 - UTILITY LINES
 - RAILROAD LINE
 - RAILROAD STATION
 - POST AREA
 - STATE LINE
 - COUNTY LINE
 - CITY LIMITS
 - FERRY ROUTE
 - NARROW CREEK OR STREAM
 - WIDE RIVER OR CREEK
 - RESERVOIR, POND OR LAKE W/ ISLAND
 - DAM OR DAM WITH LAKE
 - WATERFALL
 - SWAMP
 - COMMUNITY TOWN OR CITY CENTER
 - COUNTY SEAT
 - SCHOOL
 - COLLEGE OR UNIVERSITY
 - HOSPITAL
 - COURT HOUSE
 - CHURCH
 - CHURCH WITH CEMETERY
 - CEMETERY
 - PARK STATION
 - CORRECTION OR JENAIL INSTITUTION
 - QUARRY
 - ROAD OR PLE
 - HIGHWAY GARAGE OR MAINT. YARD
 - HIGHWAY DIST. OR DIST. OFFICE
 - MILITARY POST
 - RAILROAD STATION
 - HARBOR
 - HISTORICAL SITE
 - POINT OF INTEREST
 - STATE FOREST
 - SOUTH FORK
 - MOUNTAIN SUMMIT
 - OVERLOOK
 - REST AREA
 - VISITOR CTR REST AREA
 - WILDLIFE CTR REST AREA
 - AIRPORT
 - MILITARY AIRPORT
 - FIELD POST
 - NATIONAL STATE FOREST BOUNDARY
 - WILDLIFE REFUGE
 - NATIONAL STATE PARK BOUNDARY
 - GAME LANDS BOUNDARY
 - MILITARY RESERVATION BOUNDARY
 - INDIAN RESERVATION BOUNDARY



PREPARED BY THE NORTH CAROLINA DEPARTMENT OF TRANSPORTATION OPERATIONS PROGRAM MANAGEMENT UNIT - MAPPING SECTION IN COOPERATION WITH THE U.S. DEPARTMENT OF TRANSPORTATION FEDERAL HIGHWAY ADMINISTRATION

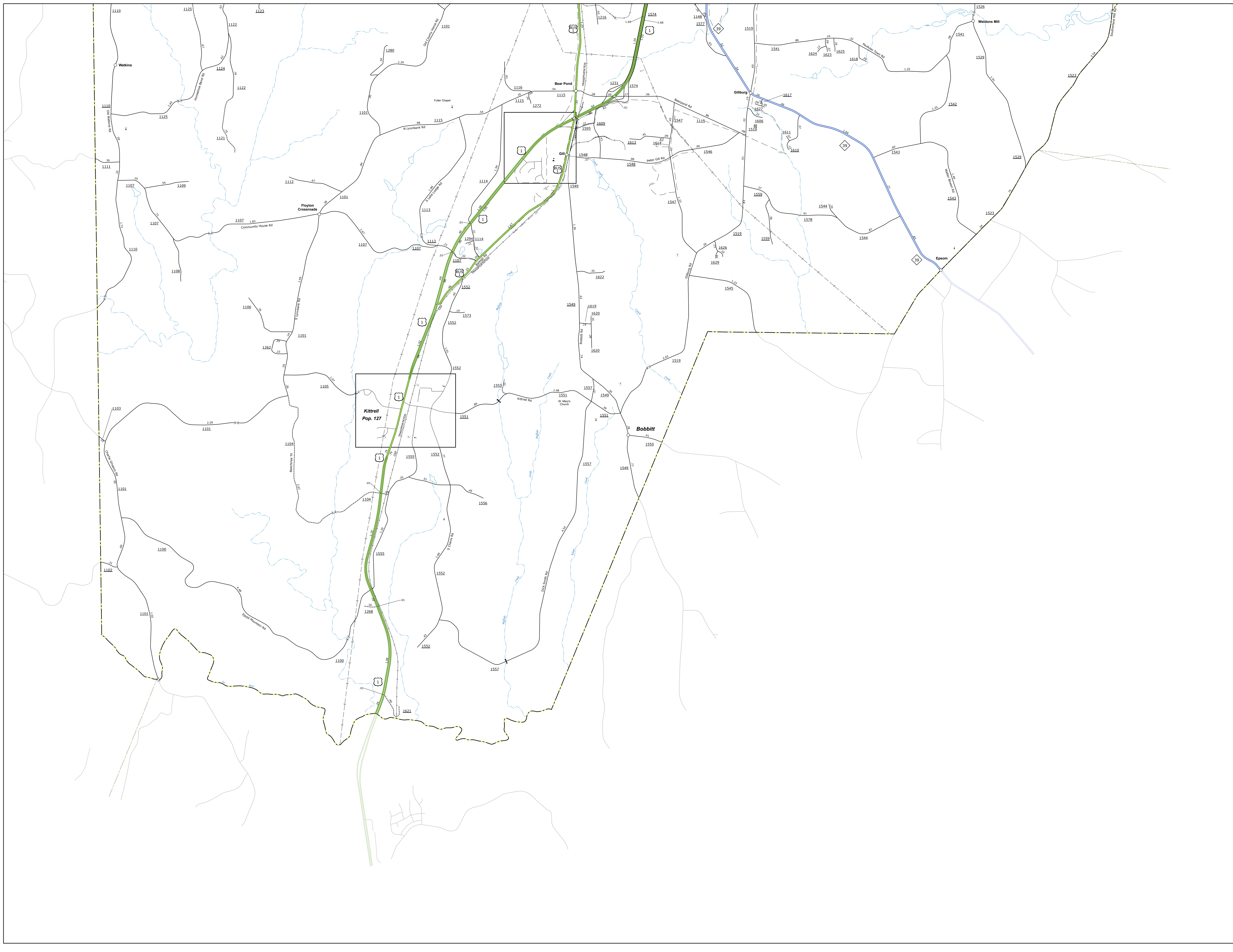


NORTH CAROLINA PLANE COORDINATE SYSTEM LAMBERT CONFORMAL CONIC PROJECTION

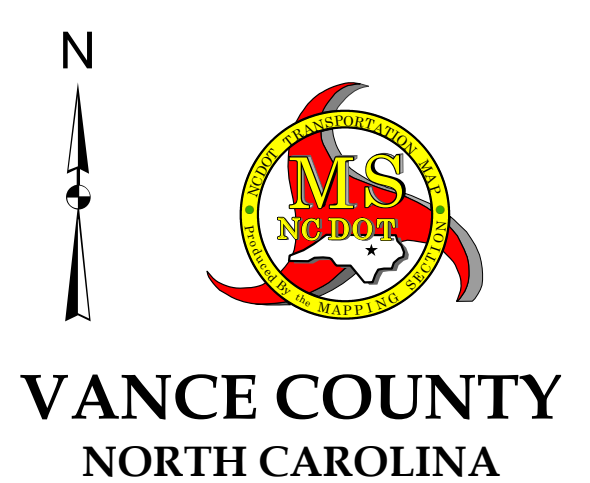


TERMS OF USE: The Mapper's Office staff is to be held responsible for any errors or omissions in this map. This map is intended for general information only and should not be used for any other purpose. The information shown on this map was last updated in April 2024. For digital copies of this map or additional map products, visit <https://www.ncdot.gov/MapProducts/MapDownloads.aspx>.

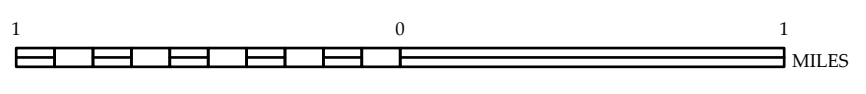
COPYRIGHT © 2024 BY THE NORTH CAROLINA DEPARTMENT OF TRANSPORTATION. ALL RIGHTS RESERVED. THIS MAP IS A PUBLIC WORK AND IS THE PROPERTY OF THE NORTH CAROLINA DEPARTMENT OF TRANSPORTATION. IT IS TO BE USED FOR GENERAL INFORMATION ONLY AND SHOULD NOT BE USED FOR ANY OTHER PURPOSE.



- LEGEND**
- INTERSTATE US NC
 - Interstate US
 - Interstate NC
 - Interstate US/NC
 - Blue Ridge Parkway
 - Controlled Access Road
 - Hard Surfaced Road
 - Non-System Road
 - Professionally Drawn Road
 - Proposed Location
 - Interchange
 - Standard Road Bridge
 - Draw Span Bridge
 - Footpath Bridge
 - Footpath Walkway
 - Footpath Underpass
 - Vehicle Underpass
 - Tunnel
 - Utility
 - Interstate Highway
 - U.S. Numbered Highway
 - U.S. Numbered Bicycle Route
 - N.C. Numbered Bicycle Route
 - Interstate Interchange Number
 - Secondary Road Number
 - Utility Lines
 - Railroad Line
 - Railroad Station
 - Post Office
 - State Line
 - County Line
 - City Limits
 - Ferry Route
 - Narrow Creek or Stream
 - Wide River or Creek
 - Reservoir, Pond or Lake w/ Island
 - Dam or Dam with Lake
 - Waterfall
 - Swamp
 - Community, Town or City Center
 - County Seat
 - School
 - College or University
 - Hospital
 - Coast Guard Station
 - Church
 - Church with Cemetery
 - Cemetery
 - Park Station
 - Correctional or Penal Institution
 - Quarry
 - Winery or Dist.
 - Highway Garage or Maint. Yard
 - Highway Dist. or Dist. Office
 - Military Post
 - Religious Station
 - Paragon
 - Historical Site
 - Point of Interest
 - State Forest
 - Light House
 - Mountain Summit
 - Overlook
 - Rest Area
 - Visitor Ctr. Rest Area
 - Wildlife Ctr. Rest Area
 - Airport
 - Military Airport
 - Helipad
 - National State Forest Boundary
 - Wildlife Refuge
 - National State Park Boundary
 - Game Lands Boundary
 - Military Reservation Boundary
 - Indian Reservation Boundary



PREPARED BY THE NORTH CAROLINA DEPARTMENT OF TRANSPORTATION OPERATIONS PROGRAM MANAGEMENT UNIT - MAPPING SECTION IN COOPERATION WITH THE U.S. DEPARTMENT OF TRANSPORTATION FEDERAL HIGHWAY ADMINISTRATION



NORTH CAROLINA PLANE COORDINATE SYSTEM LAMBERT CONFORMAL CONIC PROJECTION