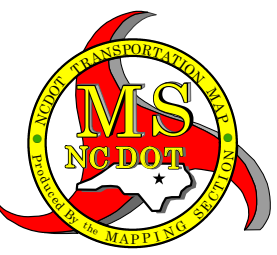
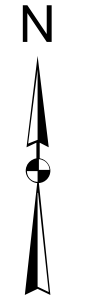


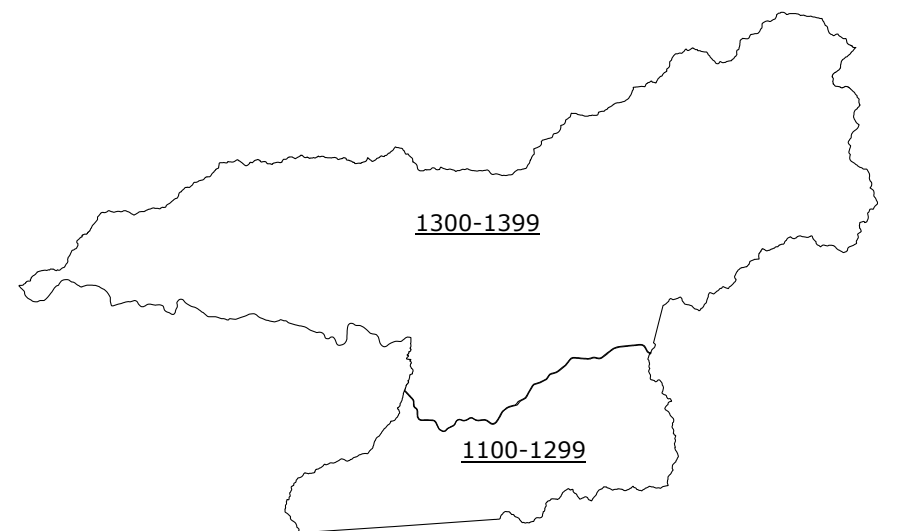
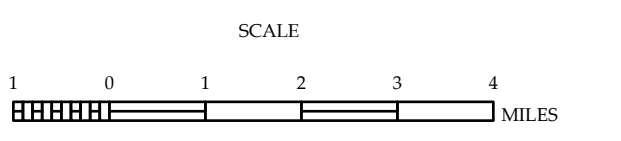
LEGEND

- INTERSTATE US NC
- Divided Hwy
- Unimproved Hwy
- UNIMPROVED SURFACED ROAD
- UNIMPROVED GRAVEL ROAD
- NON-SYSTEM ROAD
- PROPOSED/PLANNED ROAD
- PROTECTED LOCAL ROAD
- INTERSTATE INTERCHANGE
- STANDARD ROAD BRIDGE
- RAILROAD BRIDGE
- IRON SPAN OVER BRIDGE
- PEDESTRIAN BRIDGE
- PEDESTRIAN UNDERPASS
- VEHICULAR UNDERPASS
- TUNNEL
- CULVERT
- PIV
- INTERSTATE HIGHWAY
- U.S. NUMBERED HIGHWAY
- N.C. NUMBERED HIGHWAY
- U.S. NUMBERED BI-CYCLE ROUTE
- N.C. NUMBERED BI-CYCLE ROUTE
- INTERSTATE INTERCHANGE NUMBER
- SECONDARY ROAD NUMBER
- UTILITY LINES
- RAILROAD LINE
- RAILROAD STATION
- INLET AREA
- STATE LINE
- COUNTY LINE
- CITY LIMITS
- FERRY ROUTE
- NARROW GULCH OR STREAM
- WIDE RIVER OR CREEK
- BEACHFRONT, POINT OR LAKE W. ISLAND
- DAM OR DAM WITH LOCK
- WATERFALL
- SWAMP
- COMMUNITY, TOWN OR CITY CENTER
- COUNTY SEAT
- SCHOOL
- COLLEGE OR UNIVERSITY
- HOSPITAL
- COAST GUARD STATION
- CHURCH
- CHURCH WITH CEMETERY
- CEMETERY
- PRISON STATION
- CORRECTION OR PENAL INSTITUTION
- QUARRY
- MINE OR PIT
- HIGHWAY GARAGE OR MAINT. YARD
- HIGHWAY ID. OR DIST. OFFICE
- MILITARY TOWER
- WEIGH STATION
- FARMGROUNDS
- HISTORICAL SITE
- POINTS OF INTEREST
- STATE FOREST
- LIGHTHOUSE
- MONUMENT, MONUMENT OVERLOOK
- REST AREA
- VISITOR CENTER REST AREA
- WELCOMING CENTER REST AREA
- AIRPORT
- MILITARY AIRPORT
- HELIPAD
- NATIONAL STATE FOREST BOUNDARY
- WILDLIFE REFUGE
- NATIONAL STATE PARK BOUNDARY
- GAME LANDS BOUNDARY
- MILITARY RESERVATION BOUNDARY
- INDIAN RESERVATION BOUNDARY



SWAIN COUNTY NORTH CAROLINA

PREPARED BY THE NORTH CAROLINA DEPARTMENT OF TRANSPORTATION OPERATIONS PROGRAM MANAGEMENT UNIT - MAPPING SECTION IN COOPERATION WITH THE U.S. DEPARTMENT OF TRANSPORTATION FEDERAL HIGHWAY ADMINISTRATION



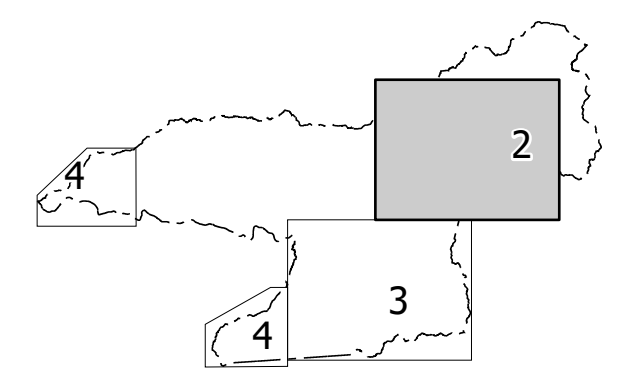
COPIES OF THIS MAP ARE AVAILABLE TO THE PUBLIC AT NOMINAL COST. CONTACT US TO ORDER: mapinfo@ncdot.gov (919) 834-5480

TERMS OF USE: The Mapping Section's goal is to provide the most accurate and current information possible. Map data is compiled from numerous sources with varying dates of publication and map accuracy standards. As a result, the accuracy, currency, and completeness of the data provided will vary. The North Carolina Department of Transportation shall not be held liable for any errors in the map data. This map cannot be considered to be a legal document. The information shown on this map was last updated in April 2024. For digital copies of this map or additional map products, visit <https://connected.ncdot.gov/resources/State-Mapping>

NORTH CAROLINA PLANE COORDINATE SYSTEM LAMBERT CONFORMAL CONIC PROJECTION SHEET 1 OF 4

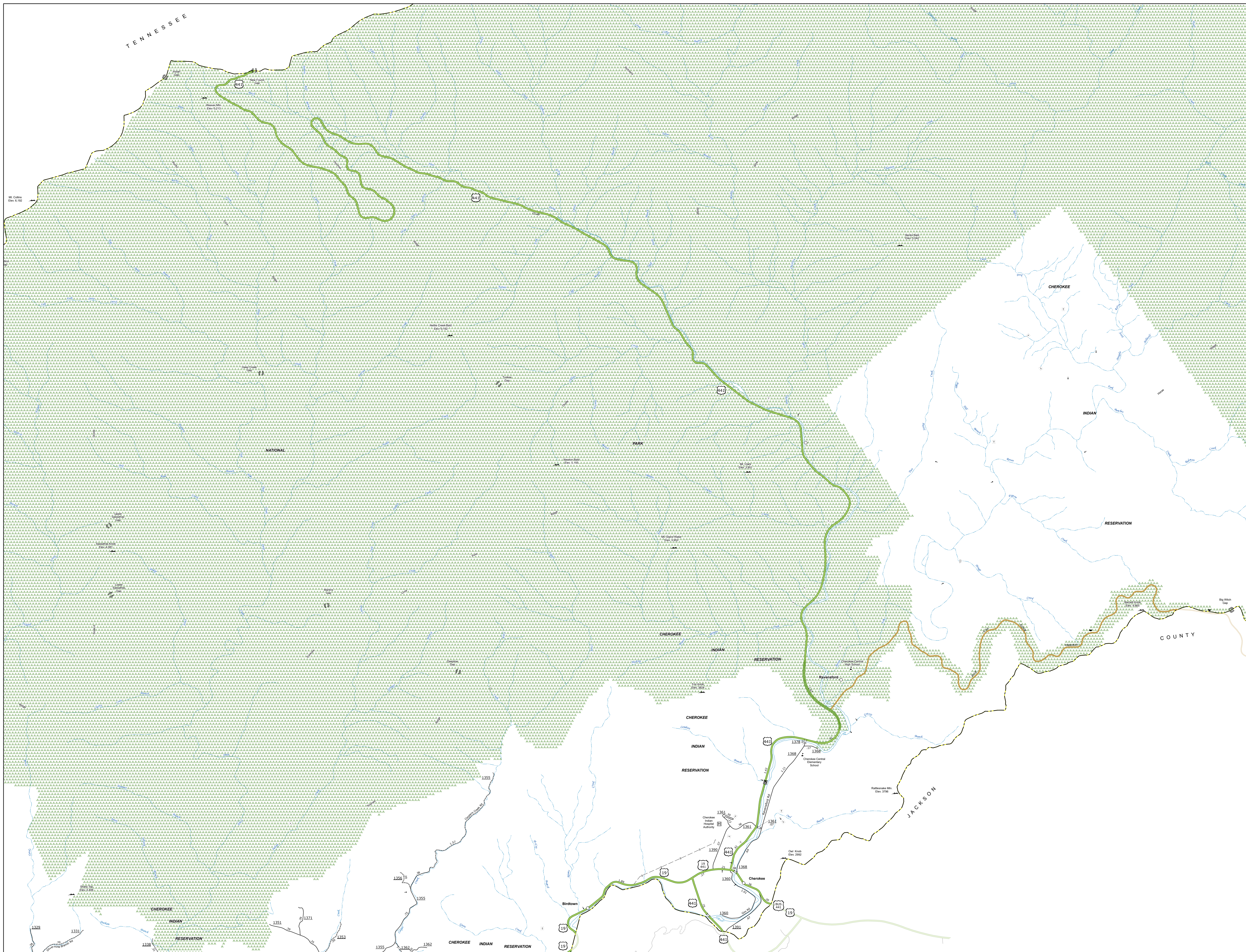
TENNESSEE

Sheet Key



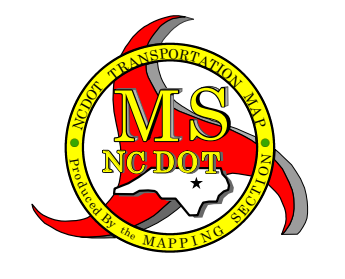
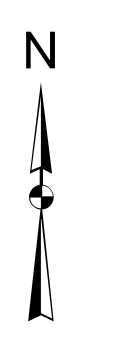
TERMS OF USE: The Mapping Section's goal is to provide the most accurate and current information possible. Map data is compiled from various sources and may vary from the ground truth. The Department of Transportation does not warrant the accuracy of any information shown on this map. For more information, please contact the Mapping Section at 919.874.2000.

COPIES OF THIS MAP ARE AVAILABLE TO THE PUBLIC AT NO CHARGE. CONTACT US TO ORDER: 919.874.2000 OR VISIT OUR WEBSITE AT WWW.NCSTATEMAPS.COM



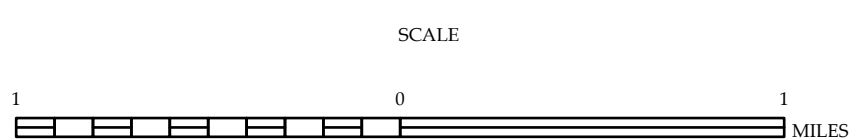
LEGEND

- INTERSTATE US NC
- Interstate US
- Interstate NC
- Decided Hwy
- Undecided Hwy
- HULE RIDGE PARKWAY
- CONCRETE PAVED ROAD
- GRAVEL PAVED ROAD
- HARD SURFACED ROAD
- SOFT SURFACED ROAD
- NON-SYSTEM ROAD
- PROFESSIONALLY DRAWN ROAD
- PROJECTED LOCATION
- INTERSECTION BREAK
- STANDARD ROAD BRIDGE
- RAILROAD BRIDGE
- DRAW SPAN BRIDGE
- PIEDMONT BRIDGE
- PIEDMONT UNDERPASS
- PIEDMONT UNDERPASS
- TRUCK LANE UNDERPASS
- TUNNEL
- FLUYERT
- RAILROAD
- INTERSTATE HIGHWAY
- U.S. NUMBERED HIGHWAY
- U.S. NUMBERED HIGHWAY
- U.S. NUMBERED BI-CYCLE ROUTE
- U.S. NUMBERED BI-CYCLE ROUTE
- INTERSTATE INTERCHANGE NUMBER
- SECONDARY ROAD NUMBER
- UTILITY LINES
- RAILROAD LINE
- RAILROAD STATION
- POST AREA
- STATE LINE
- COUNTY LINE
- CITY BOUNDARY
- FERRY ROUTE
- NARROW CREEK OR STREAM
- WIDE RIVER OR CREEK
- RESERVOIR, POND OR LAKE W/ ISLAND
- DAM OR DAM WITH LAKE
- WATERFALL
- SWAMP
- COMMUNITY, TOWN OR CITY CENTER
- COUNTY SEAT
- SCHOOL
- COLLEGE OR UNIVERSITY
- HOSPITAL
- COAST GUARD STATION
- CHURCH
- CHURCH WITH CEMETERY
- CEMETERY
- PARK STATION
- CORRECTION OR PENAL INSTITUTION
- QUARRY
- MINING SITE
- HIGHWAY GARAGE OR MAINT. YARD
- HIGHWAY DIST. OR DIST. OFFICE
- SILVER POST
- WATER STATION
- FARGO STATION
- HISTORICAL SITE
- POINT OF INTEREST
- STATE FOREST
- BOOTHING
- MOUNTAIN SUMMIT
- OVERLOOK
- REST AREA
- VISITOR CTR. REST AREA
- WILDLIFE CTR. REST AREA
- AIRPORT
- MILITARY AIRPORT
- HELIPORT
- NATIONAL STATE FOREST BOUNDARY
- WILDLIFE REFUGE
- NATIONAL STATE PARK BOUNDARY
- GAME LANDS BOUNDARY
- MILITARY RESERVATION BOUNDARY
- INDIAN RESERVATION BOUNDARY



SWAIN COUNTY NORTH CAROLINA

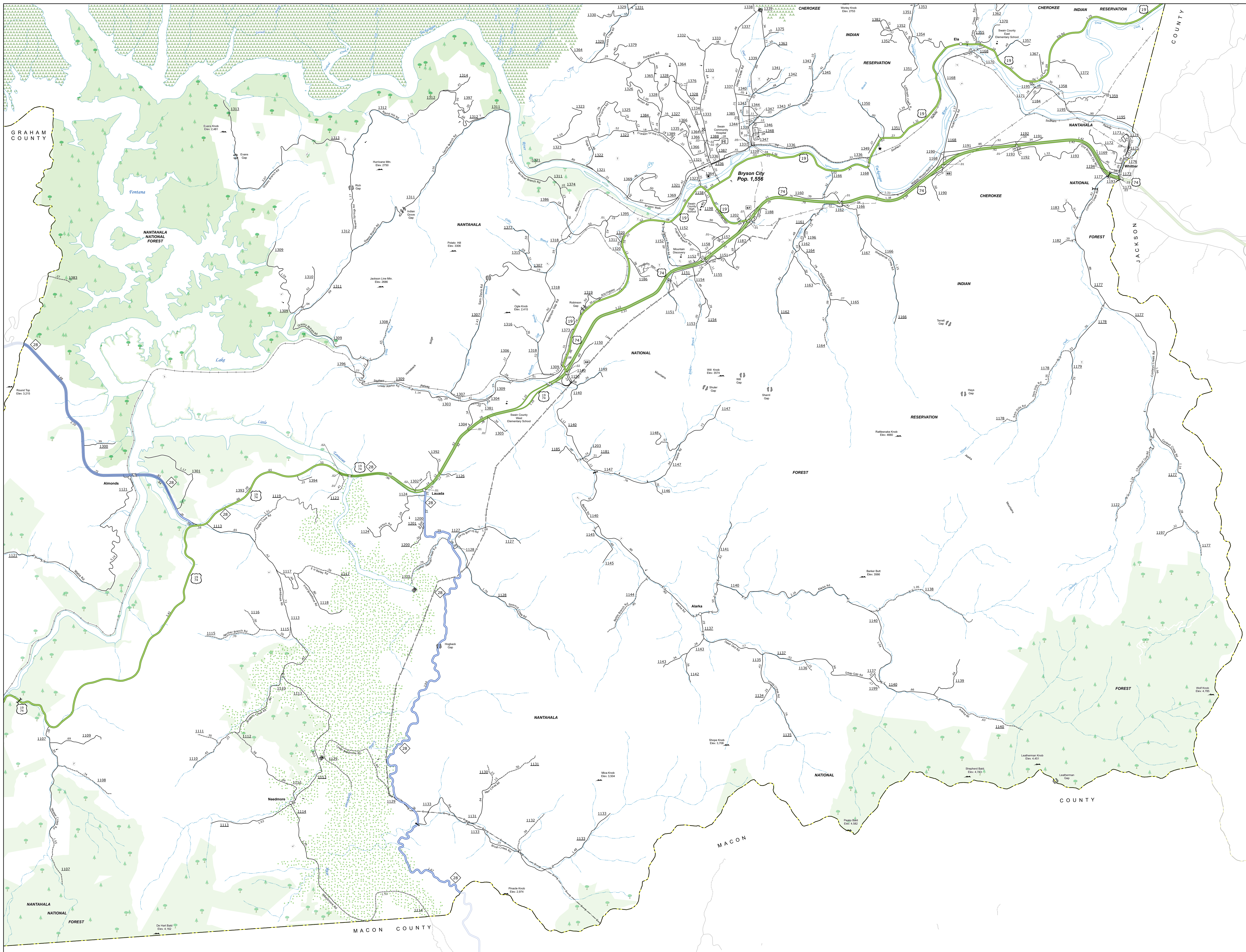
PREPARED BY THE NORTH CAROLINA DEPARTMENT OF TRANSPORTATION OPERATIONS PROGRAM MANAGEMENT UNIT - MAPPING SECTION IN COOPERATION WITH THE U.S. DEPARTMENT OF TRANSPORTATION FEDERAL HIGHWAY ADMINISTRATION



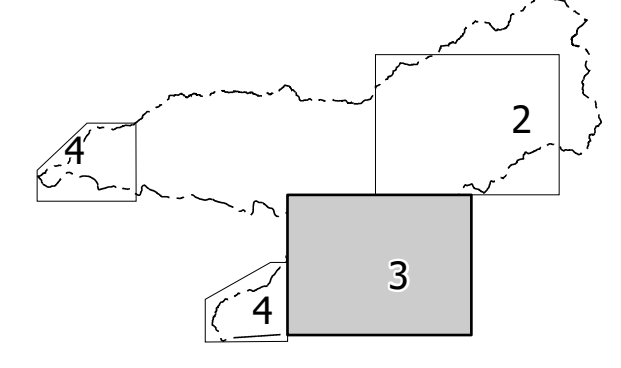
NORTH CAROLINA PLANE COORDINATE SYSTEM LAMBERT CONFORMAL CONIC PROJECTION

TERMS OF USE: The Mapping Section's goal is to provide the most accurate and current information possible. Map data is compiled from numerous sources and is not guaranteed to be 100% accurate. The North Carolina Department of Transportation does not assume any liability for errors or omissions. This map is provided as a service to the public and is not intended for use in any legal proceeding. For more information, please contact the Mapping Section at 704.769.3333.

COPIES OF THIS MAP ARE AVAILABLE TO THE PUBLIC AT NO CHARGE. CONTACT US TO ORDER: 704.769.3333 OR VISIT OUR WEBSITE AT WWW.NCDOT.COM

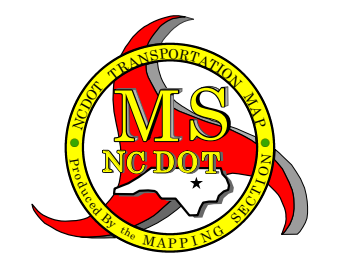
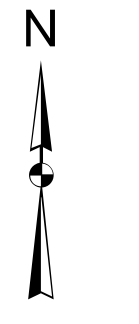


Sheet Key



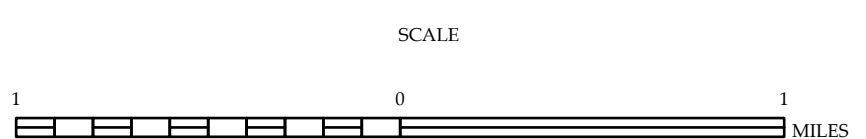
LEGEND

- INTERSTATE US NC
- US NUMBERED HIGHWAY
- US NUMBERED HIGHWAY
- US NUMBERED BI-CYCLE ROUTE
- INTERSTATE INTERCHANGE NUMBER
- SECONDARY ROAD NUMBER
- UTILITY LINES
- RAILROAD LINE
- RAILROAD STATION
- POST AREA
- STATE LINE
- COUNTY LINE
- CITY LIMITS
- FERRY ROUTE
- NARROW CREEK OR STREAM
- WIDE RIVER OR CREEK
- RESERVOIR, POND OR LAKE W/ ISLAND
- DAM OR DAM WITH LAKE
- WATERFALL
- SWAMP
- COMMUNITY, TOWN OR CITY CENTER
- COUNTY SEAT
- SCHOOL
- COLLEGE OR UNIVERSITY
- HOSPITAL
- COAST GUARD STATION
- CHURCH
- CHURCH WITH CEMETERY
- CEMETERY
- PARK STATION
- CORRECTION OR PENAL INSTITUTION
- QUARRY
- BOAT OR PLE
- HIGHWAY GARAGE OR MAINT. YARD
- HIGHWAY DIST. OR DIST. OFFICE
- MILITARY POST
- WEIGH STATION
- FARGO STATION
- HISTORICAL SITE
- POINT OF INTEREST
- STATE FOREST
- SOUTH FORK
- MOUNTAIN SUMMIT
- OVERLOOK
- REST AREA
- VISITOR CTR. REST AREA
- WILDCAM CTR. REST AREA
- AIRPORT
- MILITARY AIRPORT
- FIELD POST
- NATIONAL STATE FOREST BOUNDARY
- WILDLIFE REFUGE
- NATIONAL STATE PARK BOUNDARY
- GAME LANDS BOUNDARY
- MILITARY RESERVATION BOUNDARY
- INDIAN RESERVATION BOUNDARY



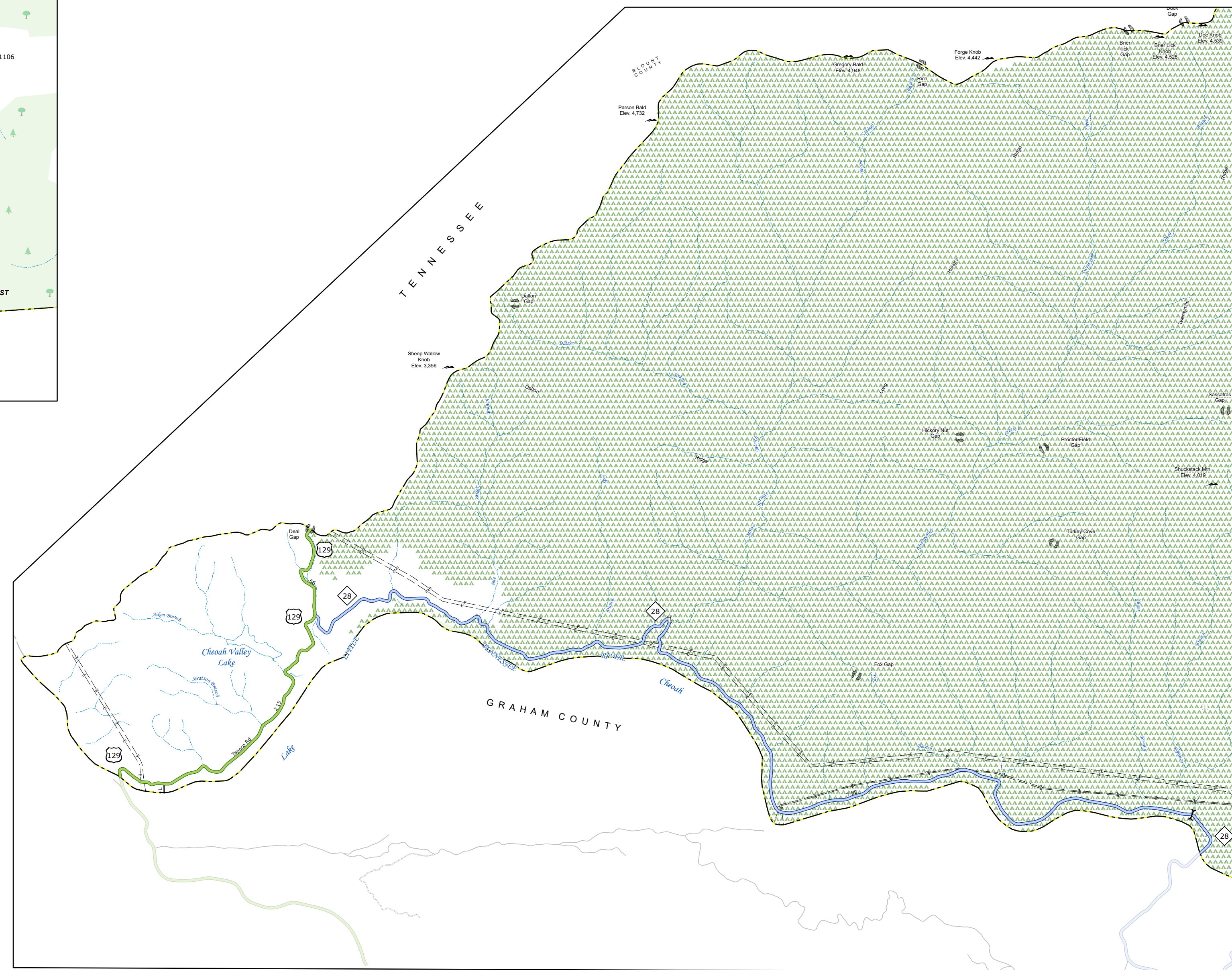
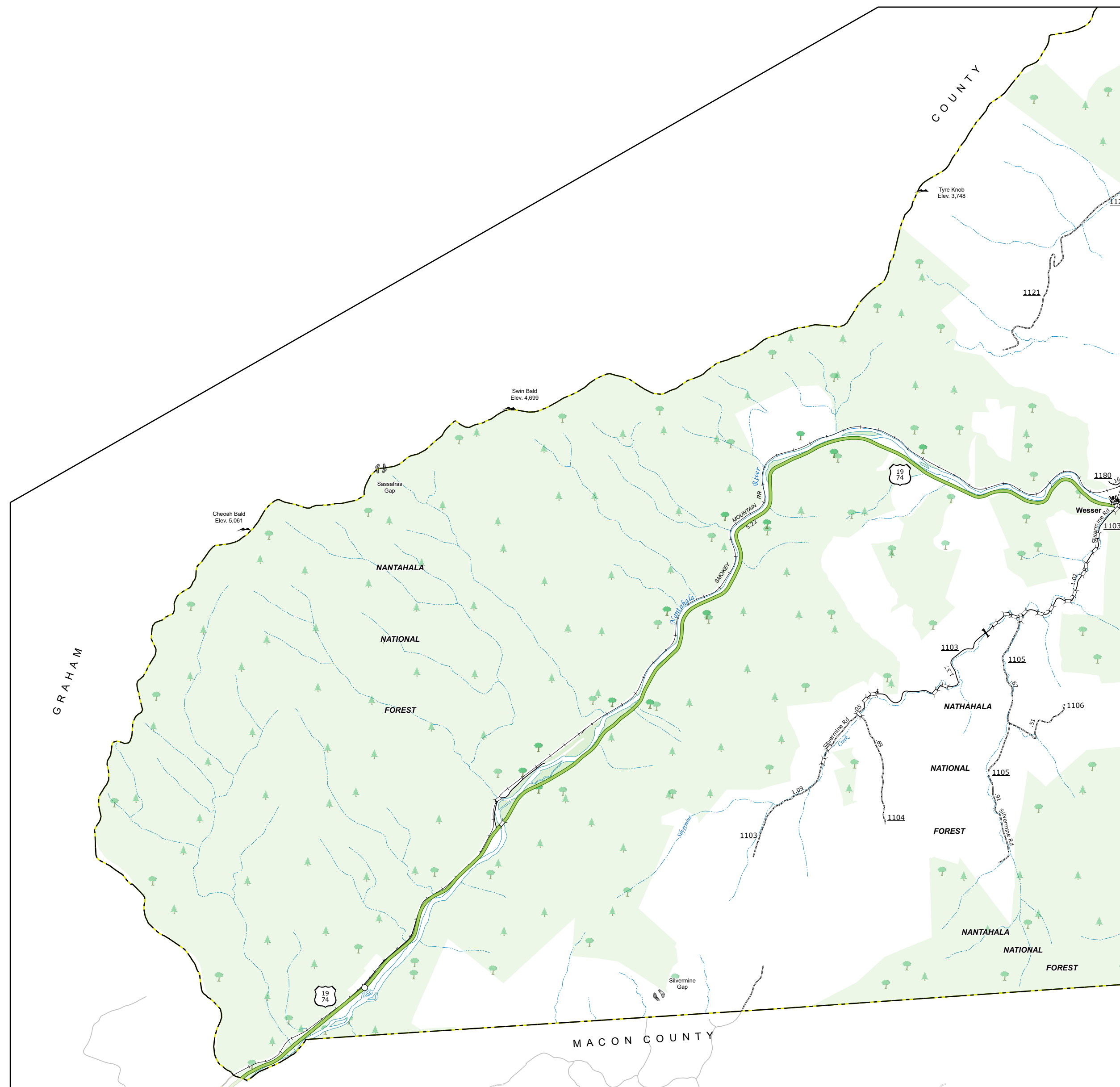
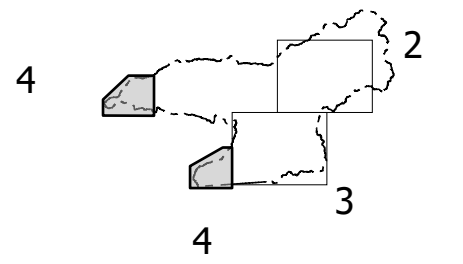
**SWAIN COUNTY
NORTH CAROLINA**

PREPARED BY THE
NORTH CAROLINA DEPARTMENT OF TRANSPORTATION
OPERATIONS PROGRAM MANAGEMENT UNIT - MAPPING SECTION
IN COOPERATION WITH THE
U.S. DEPARTMENT OF TRANSPORTATION
FEDERAL HIGHWAY ADMINISTRATION

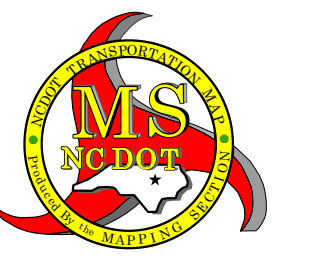
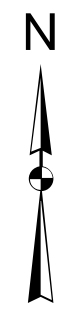


NORTH CAROLINA PLANE COORDINATE SYSTEM
LAMBERT CONFORMAL CONIC PROJECTION

Sheet Key



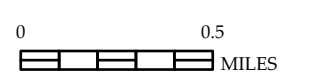
- LEGEND**
- INTERSTATE US NC Divided Hwy Undivided Hwy
 - BLUE RIDGE PARKWAY
 - UNIMPROVED GRAVEL ROAD
 - HARD SURFACED ROAD
 - WOODSTOCK ROAD
 - PROVISIONALLY DRAWN ROAD
 - PUNCTURED LOG ATOP
 - INTERSECTION DISTANCE
 - STANDARD ROAD BRIDGE
 - RAILROAD BRIDGE
 - DEAN SPAN ON BRIDGE
 - PEDESTRIAN BRIDGE
 - PEDESTRIAN WALKWAY
 - PEDESTRIAN UNDERPASS
 - VEHICULAR UNDERPASS
 - CULVERT
 - TUNNEL
 - PIVOT
 - INTERSTATE HIGHWAY
 - U.S. NUMBERED HIGHWAY
 - U.S. NUMBERED HIGHWAY
 - U.S. NUMBERED BI-CYCLE ROUTE
 - STATE NUMBERED BI-CYCLE ROUTE
 - INTERSTATE INTERCHANGE NUMBER
 - SECONDARY ROAD NUMBER
 - UTILITY LINE
 - RAILROAD LINE
 - RAILROAD STATION
 - POST OFFICE
 - STATE LINE
 - COUNTY LINE
 - CITY LIMITS
 - TOWN LIMITS
 - FERRY ROUTE
 - NARROW CREEK OR STREAM
 - WIDE RIVER OR CREEK
 - RESERVOIR, POND, LAKE, W/ ISLAND
 - DAM OR DAM WITH LOCK
 - WATERFALL
 - SWAMP
 - COMMUNITY, TOWN OR CITY CENTER
 - COUNTY SEAT
 - SCHOOL
 - COLLEGE OR UNIVERSITY
 - HOSPITAL
 - COURT HOUSE
 - CHURCH
 - CHURCH WITH CEMETERY
 - CEMETERY
 - PAPER STATION
 - CORRECTION OR PENAL INSTITUTION
 - QUARRY
 - MENOR BIT
 - HIGHWAY GARAGE OR MAINT YARD
 - DRIVING DIV. OR TEST OFFICE
 - MILITARY POST
 - WEIGH STATION
 - PARKING SIGN
 - HISTORICAL SITE
 - POINTS OF INTEREST
 - STATE FOREST
 - LANDMARK
 - MOUNTAIN SUMMIT
 - OVERLOOK
 - REST AREA
 - VISITOR CENTER AREA
 - WELCOME CENTER AREA
 - SHELTER
 - MILITARY AIRPORT
 - HILLTOP
 - NATIONAL STATE FOREST BOUNDARY
 - WILDLIFE REFUGE
 - NATIONAL STATE PARK BOUNDARY
 - GAME LANDS BOUNDARY
 - MILITARY RESERVATION BOUNDARY
 - INDIAN RESERVATION BOUNDARY



**SWAIN COUNTY
NORTH CAROLINA**

PREPARED BY THE
NORTH CAROLINA DEPARTMENT OF TRANSPORTATION
OPERATIONS PROGRAM MANAGEMENT UNIT - MAPPING SECTION
IN COOPERATION WITH THE
U.S. DEPARTMENT OF TRANSPORTATION
FEDERAL HIGHWAY ADMINISTRATION

SCALE



NORTH CAROLINA PLANE COORDINATE SYSTEM
LAMBERT CONFORMAL CONIC PROJECTION

COPIES OF THIS MAP ARE AVAILABLE TO THE
PUBLIC AT NOMINAL COST. CONTACT US TO ORDER:
Mapping@ncdot.gov
1-800-368-3688

TERMS OF USE: The Mapping Section's goal is to provide the most accurate and current information possible. Map data is compiled from numerous sources with varying dates of publication and map accuracy standards. As a result, the accuracy, currency, and completeness of the data provided will vary. The North Carolina Department of Transportation shall not be held liable for any errors in the map data. This map cannot be construed to be a legal document. The information shown on this map was last updated in April 2024. For digital copies of this map or additional map products, visit <https://connect.ncdot.gov/resources/State-Mapping>.