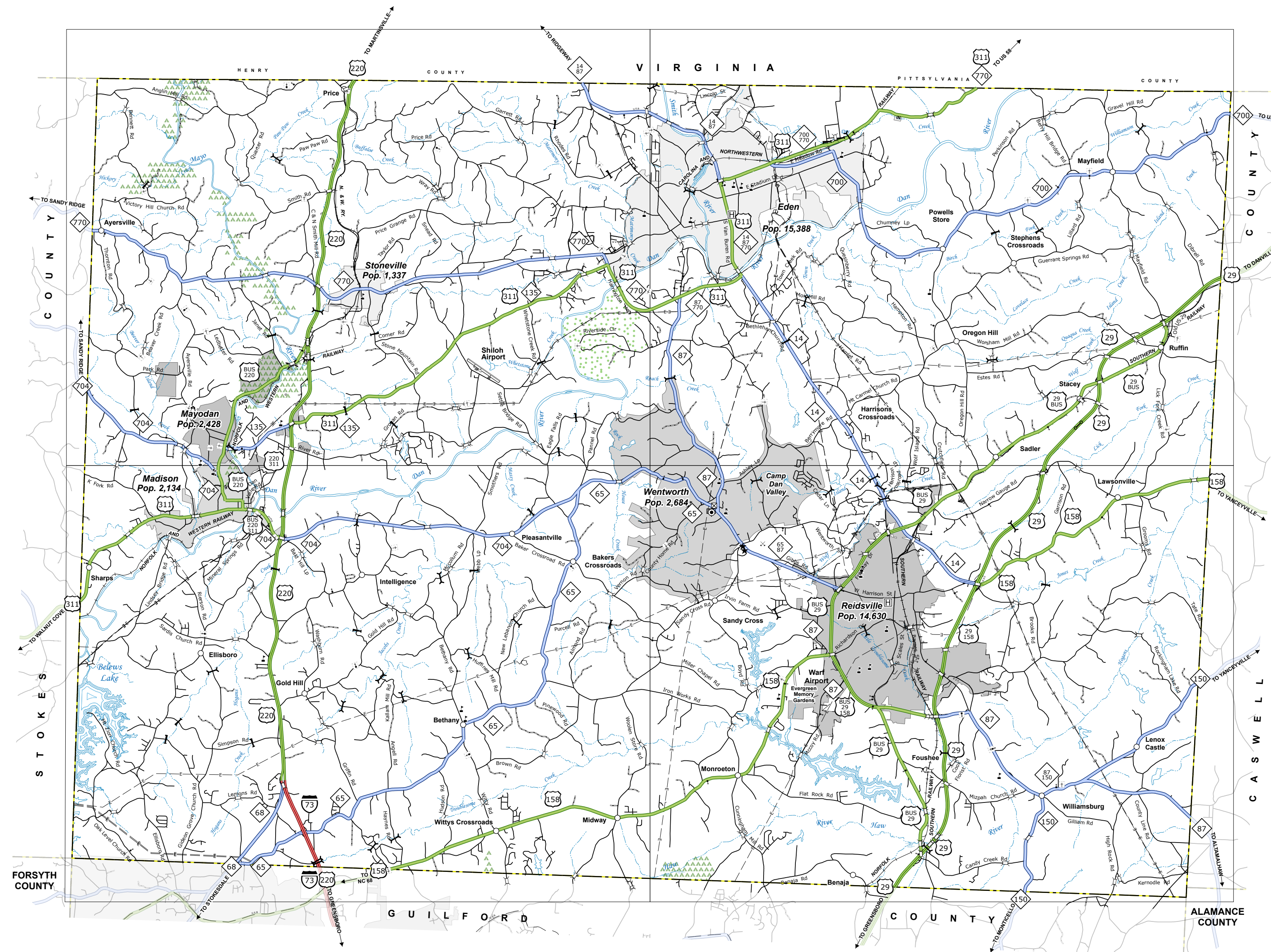
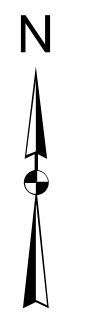
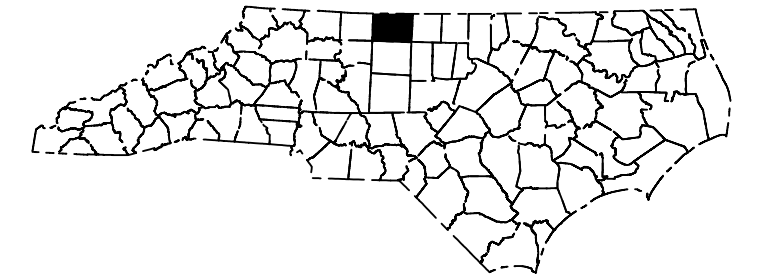
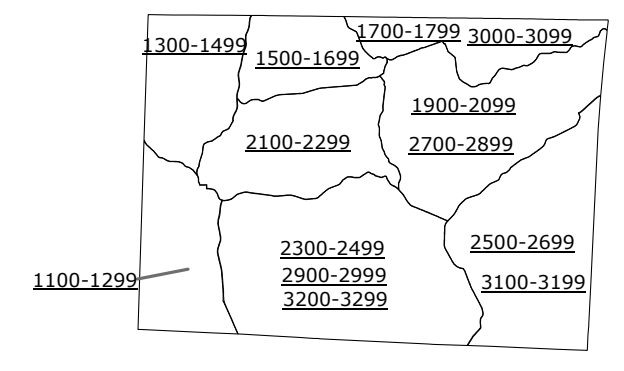


2	3
4	5

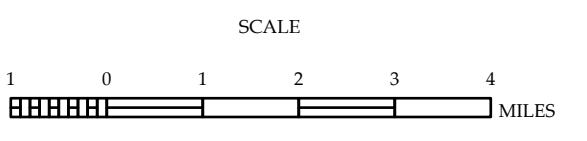


- LEGEND**
- INTERSTATE US NC
  - Divided Hwy
  - Undivided Hwy
  - BLUE RIDGE PARKWAY
  - UNPAVED GRAVEL ROAD
  - ROADWAY GRAVEL ROAD
  - NOX SYSTEM ROAD
  - PROFESSIONAL GRAVEL ROAD
  - PROTECTOR ROAD
  - INTERSECTION
  - STANDARD ROAD BRIDGE
  - RAILROAD BRIDGE
  - TRUSS BRIDGE
  - PIEDMONT BRIDGE
  - PIEDMONT UNDERPASS
  - VEHICULAR UNDERPASS
  - TUNNEL
  - CULVERT
  - POP
  - INTERSTATE HIGHWAY
  - U.S. NUMBERED HIGHWAY
  - N.C. NUMBERED HIGHWAY
  - U.S. NUMBERED BICYCLE ROUTE
  - N.C. NUMBERED BICYCLE ROUTE
  - INTERSTATE INTERCHANGE NUMBER
  - SECONDARY ROAD NUMBER
  - UTILITY LINES
  - RAILROAD LINE
  - RAILROAD STATION
  - RAILROAD
  - STATE LINE
  - COUNTY LINE
  - MUNICIPAL BOUNDARIES
  - CITY LIMITS
  - FERRY ROUTE AND RAMP
  - NARROW STRIP OF STREAM
  - WIDE RIVER OR CREEK
  - RESERVOIR, POND OR LAKE WITH ISLAND
  - DAM OR DAM WITH LOCK
  - WATERFALL
  - SWAMP
  - COMMUNITY
  - CITY SEAP
  - SCHOOL
  - COLLEGE OR UNIVERSITY
  - HOSPITAL
  - COAST GUARD STATION
  - CHURCH
  - CHURCH WITH EMERGENCY
  - COURT
  - PARK STATION
  - CORRECTIONAL INSTITUTION
  - GAZEBO
  - MINE OR PIT
  - BRIGHT GARAGE OR MAINT. YARD
  - HIGHWAY DIV. OR DIST. OFFICE
  - MILITARY POST
  - WEIGH STATION
  - FARM BURNING
  - HISTORICAL SITE
  - POINTS OF INTEREST
  - POST OFFICE
  - STATE FOREST
  - LANDFILL
  - MOBILE HOME
  - MOBILE HOME CAMP
  - OVERLOOK
  - REST AREA
  - VISITOR REST AREA
  - WELLSIDE REST AREA
  - AREPORT
  - MILITARY AIRPORT
  - NATIONAL STATE FOREST BOUNDARY
  - WILDLIFE REFUGE
  - NATIONAL STATE PARK BOUNDARY
  - GAME LANDS BOUNDARY
  - MILITARY RESERVATION BOUNDARY
  - INDIAN RESERVATION BOUNDARY



**ROCKINGHAM COUNTY  
NORTH CAROLINA**

PREPARED BY THE  
NORTH CAROLINA DEPARTMENT OF TRANSPORTATION  
OPERATIONS PROGRAM MANAGEMENT UNIT - MAPPING SECTION  
IN COOPERATION WITH THE  
U.S. DEPARTMENT OF TRANSPORTATION  
FEDERAL HIGHWAY ADMINISTRATION



SCALE FOR ENLARGEMENTS

COPIES OF THIS MAP ARE AVAILABLE TO THE PUBLIC AT NOMINAL COST. CONTACT US TO ORDER:  
maporders@ncdot.gov  
https://www.ncdot.gov/resources/State-Mapping/Pages/Ordering-Maps.aspx  
(719) 634-4400

TERMS OF USE: The Mapping Section's goal is to provide the most accurate and current information possible. Map data is compiled from numerous sources with varying dates of publication and map accuracy standards. As a result, the accuracy, currency, and completeness of the data provided will vary. The North Carolina Department of Transportation shall not be held liable for any errors in the map data. This map cannot be construed to be a legal document. The information shown on this map was last updated in March 2024. For digital copies of this map or additional map products, visit https://www.ncdot.gov/resources/State-Mapping.aspx

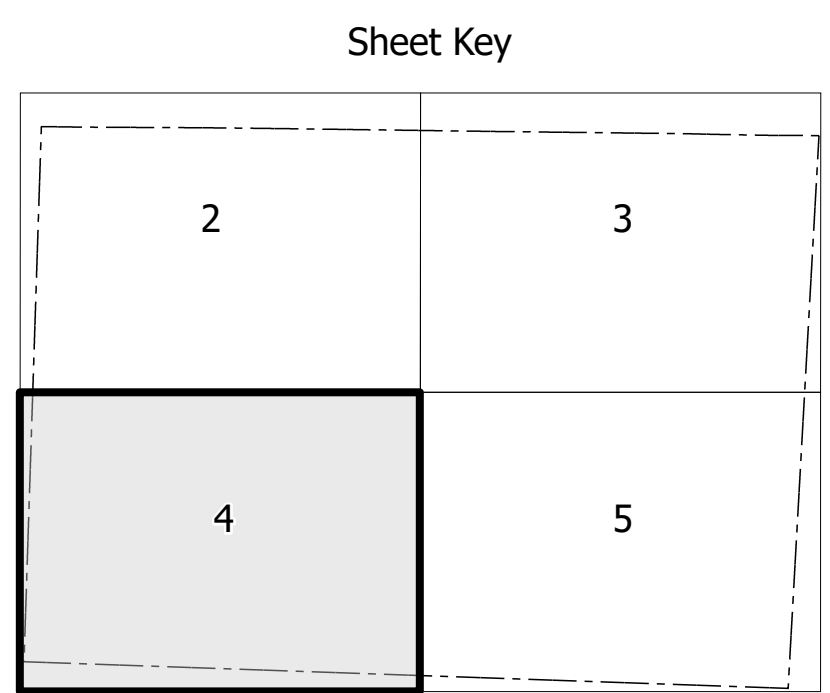
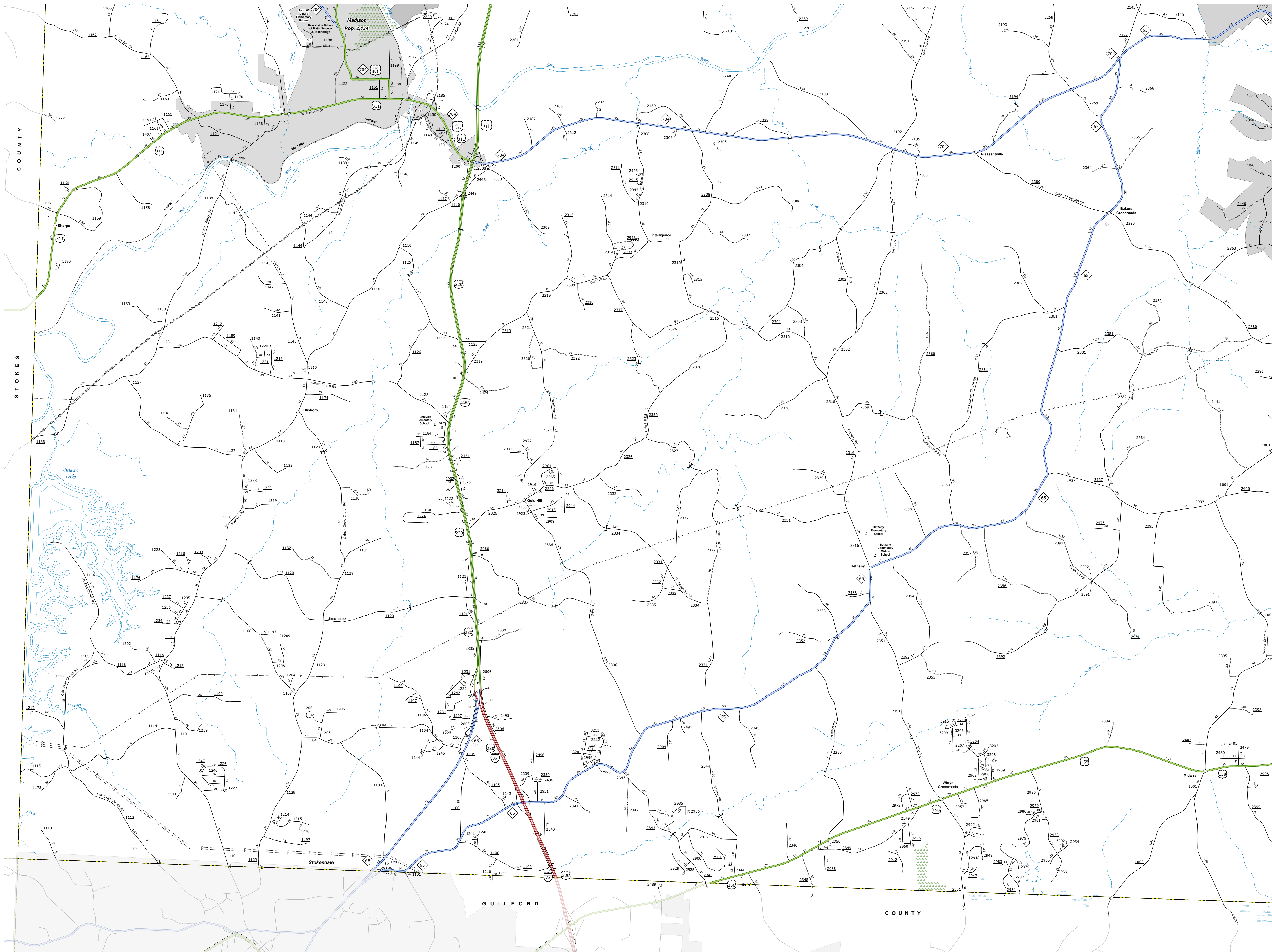
NORTH CAROLINA PLANE COORDINATE SYSTEM  
LAMBERT CONFORMAL CONIC PROJECTION





TERMS OF USE: This Mapping Section's goal is to provide the most accurate and current information possible. Map data is compiled from various sources including aerial photography, ground surveys, and other data. The user assumes all responsibility for the use of this information. This information is provided as a public service and is not intended to be used for legal purposes. The information shown on this map was last updated in March 2024. For more information, please contact the Mapping Section at 919.733.4400 or [mapinfo@rockinghamcountync.gov](mailto:mapinfo@rockinghamcountync.gov).

COPIES OF THIS MAP ARE AVAILABLE TO THE PUBLIC AT NO CHARGE. CONTACT US TO OBTAIN: [mapinfo@rockinghamcountync.gov](mailto:mapinfo@rockinghamcountync.gov) OR CALL 919.733.4400.



- LEGEND**
- INTERSTATE US NC
  - US NUMBERED HIGHWAY
  - US NUMBERED BIKEWAY
  - US NUMBERED BIKEWAY ROUTE
  - INTERSTATE INTERCHANGE NUMBER
  - SECONDARY ROAD NUMBER
  - CITY LIMITS
  - COUNTY LIMITS
  - UNINCORPORATED TOWN BOUNDARIES
  - CITY LIMITS
  - FERRY ROUTE AND RAMP
  - CREEK OR STREAM
  - WIDE RIVER OR CREEK
  - RESERVOIR, POND OR LAKE W/ ISLAND
  - DAM OR DAM WITH LOCK
  - WATERFALL
  - SWAMP
  - COMBENITY
  - COUNTY SEAT
  - CITY
  - COLLEGE OR UNIVERSITY
  - HOSPITAL
  - COAST GUARD STATION
  - CERCH
  - CERCH WITH CEMETERY
  - CEMETERY
  - POWERS STATION
  - CORRECTION OR PENAL INSTITUTION
  - GAZARD
  - REST OR PTE
  - BIWAYWAY BAR OR MANT YARD
  - HIGHWAY DIV. OR DIST. OFFICE
  - MILITARY POST
  - RAILROAD STATION
  - FARGOONDS
  - RESERVOIR SITE
  - POINTS OF INTEREST
  - POST OFFICE
  - STATE FOREST
  - ROCKY MOUNTAIN
  - ROCKY MOUNTAIN GAP
  - OVERLOOK
  - REST AREA
  - WILDERNESS REST AREA
  - WELCOME CENTER/REST AREA
  - AIRPORT
  - MILITARY AIRPORT
  - NATIONAL STATE FOREST BOUNDARY
  - WILDERNESS REFUGE
  - NATIONAL STATE PARK BOUNDARY
  - GAME LANDS BOUNDARY
  - MILITARY RESERVATION BOUNDARY
  - DISARM RESERVATION BOUNDARY

N

**ROCKINGHAM COUNTY**  
NORTH CAROLINA

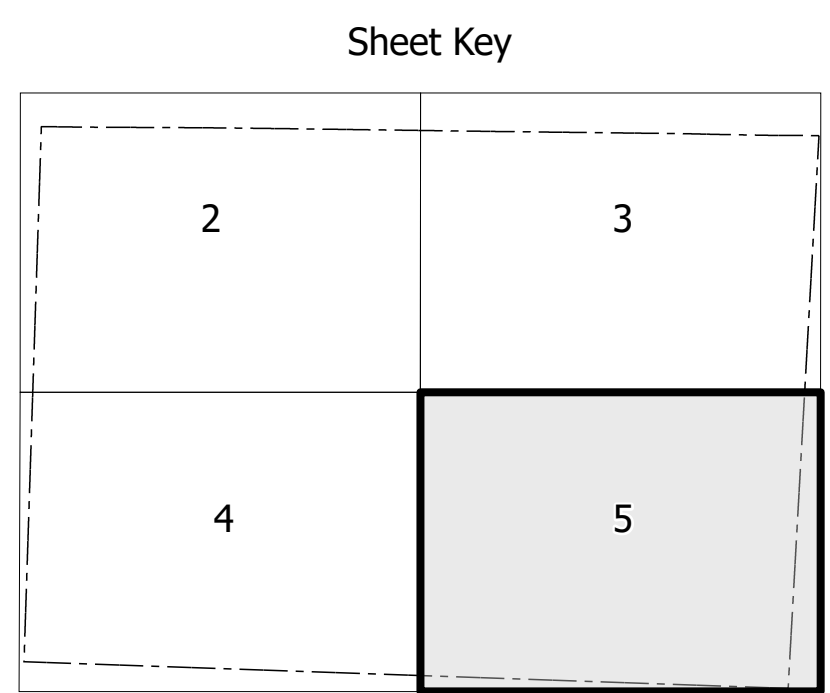
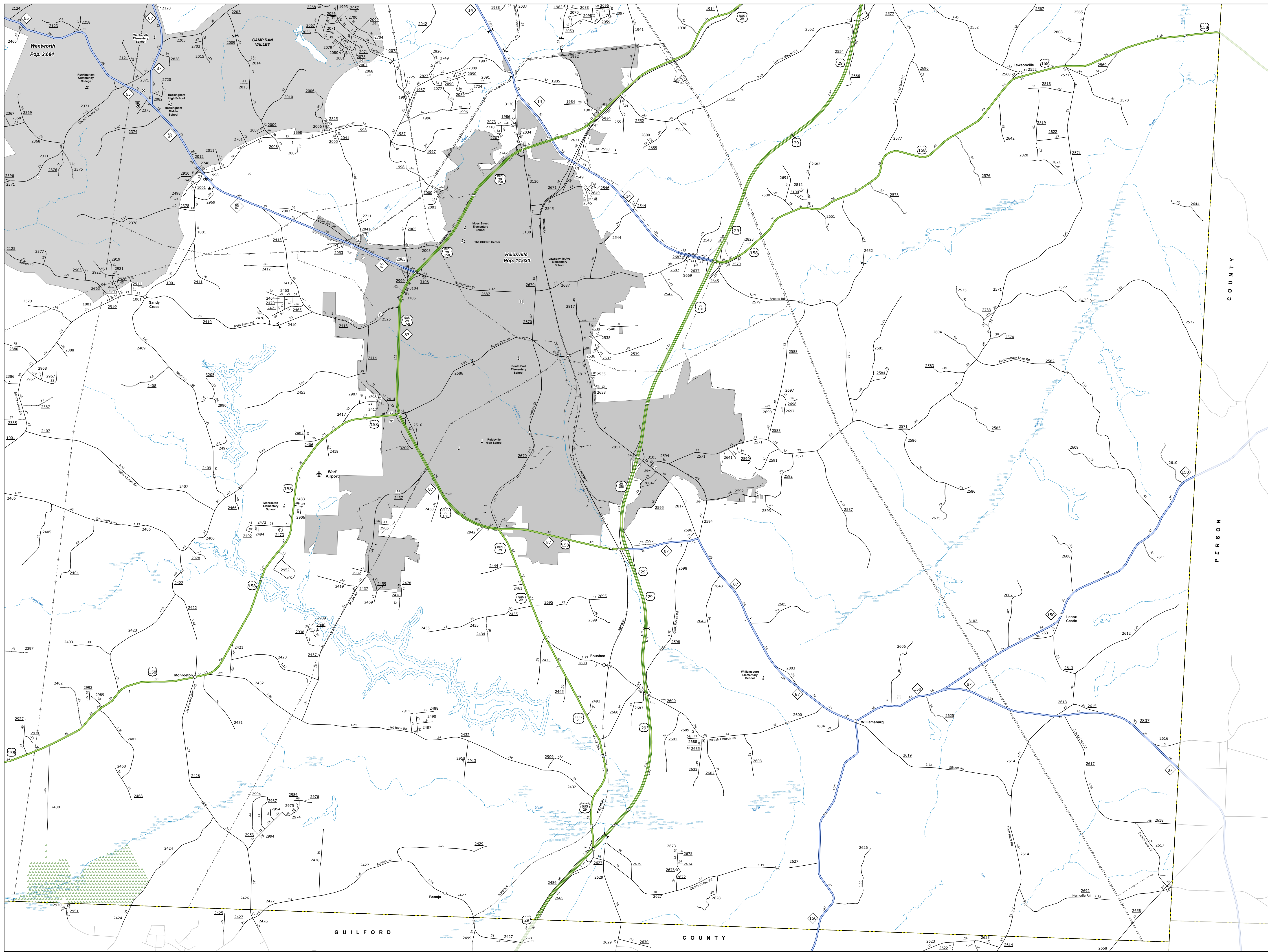
PREPARED BY THE  
NORTH CAROLINA DEPARTMENT OF TRANSPORTATION  
OPERATIONS PROGRAM MANAGEMENT UNIT - MAPPING SECTION  
IN COOPERATION WITH THE  
U.S. DEPARTMENT OF TRANSPORTATION  
FEDERAL HIGHWAY ADMINISTRATION

SCALE

NORTH CAROLINA PLANE COORDINATE SYSTEM  
LAMBERT CONFORMAL CONIC PROJECTION

TERMS OF USE: The Mapping Section's goal is to provide the most accurate and current information possible. Map data is compiled from numerous sources including aerial photography, ground surveys, and other information. The Mapping Section is not responsible for errors or for any consequences arising from the use of the information shown on this map. This map was last updated in March 2024. For the most current information, please contact the Mapping Section at 336-850-3333.

COPIES OF THIS MAP ARE AVAILABLE TO THE PUBLIC AT NO CHARGE. CONTACT US TO OBTAIN: 336-850-3333 OR VISIT OUR WEBSITE AT: <http://www.rockinghamnc.gov/transportation/mapping>



- LEGEND**
- INTERSTATE US NC
  - US NUMBERED HIGHWAY
  - US NUMBERED BI-CYCLE ROUTE
  - INTERSTATE INTERCHANGE NUMBER
  - SECONDARY ROAD NUMBER
  - LIBRARY
  - RAILROAD LINE
  - RAILROAD STATION
  - POST OFFICE
  - STATE LINE
  - COUNTY LINE
  - UNINCORPORATED TOWN BOUNDARIES
  - CITY LIMITS
  - UNINCORPORATED TOWN AND RAMP
  - CANYON, CREEK OR STREAM
  - WIDE RIVER OR CREEK
  - RESERVOIR, POND OR LAKE W/ ISLAND
  - DAM OR DAM WITH LOCK
  - WATERFALL
  - SWAMP
  - COMBINE
  - COUNTY SEAT
  - CITY
  - CITY OR COLLEGE UNIVERSITY
  - HOSPITAL
  - COAST GUARD STATION
  - CHURCH
  - CHURCH WITH CEMETERY
  - CEMETERY
  - POWERS STATION
  - CORRECTION OR PENAL INSTITUTION
  - GRANARY
  - REST OR PTE
  - HIGHWAY GARAGE OR MAINT. YARD
  - HIGHWAY DRY OR DIST. OFFICE
  - MILITARY POST
  - WATER STATION
  - FABRICATIONS
  - RESERVOIR SITE
  - POINTS OF INTEREST
  - POST OFFICE
  - STATE FOREST
  - LIGHTHOUSE
  - MONUMENT SUMMIT
  - MONUMENT GAP
  - OVERLOOKING
  - REST AREA
  - UNINCORPORATED REST AREA
  - WELCOME TO REST AREA
  - AIRPORT
  - MILITARY AIRPORT
  - NATIONAL STATE FOREST BOUNDARY
  - WILDLIFE REFUGE
  - NATIONAL STATE PARK BOUNDARY
  - GAME LANDS BOUNDARY
  - MILITARY RESERVATION BOUNDARY
  - DISARM RESERVATION BOUNDARY

N

**ROCKINGHAM COUNTY**  
NORTH CAROLINA

PREPARED BY THE  
NORTH CAROLINA DEPARTMENT OF TRANSPORTATION  
OPERATIONS PROGRAM MANAGEMENT UNIT - MAPPING SECTION  
IN COOPERATION WITH THE  
U.S. DEPARTMENT OF TRANSPORTATION  
FEDERAL HIGHWAY ADMINISTRATION

SCALE

NORTH CAROLINA PLANE COORDINATE SYSTEM  
LAMBERT CONFORMAL CONIC PROJECTION