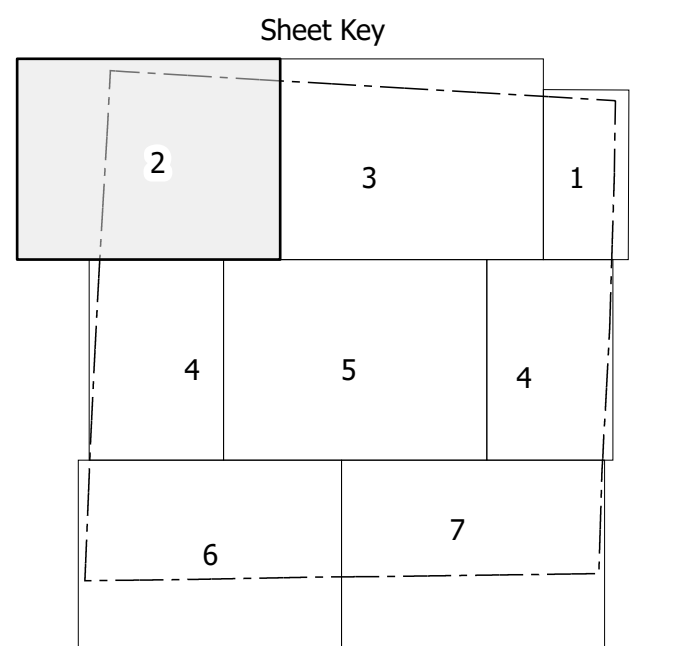
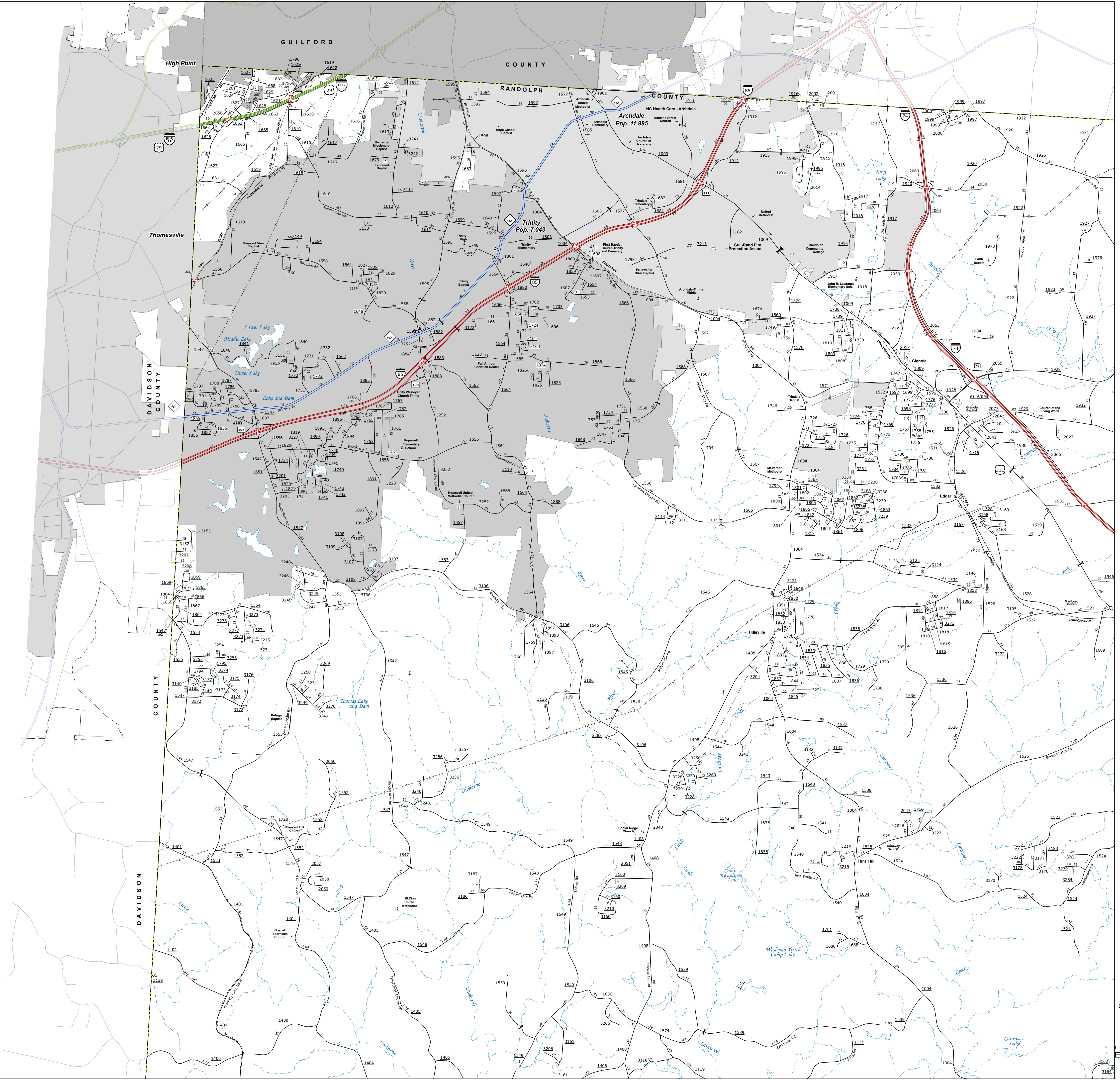






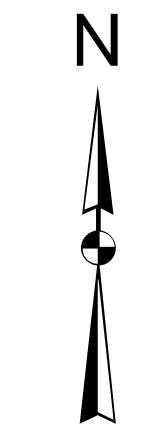
THIS IS A PRELIMINARY MAP. THE MAP IS NOT TO BE USED FOR ANY PURPOSES THAT REQUIRE A HIGH DEGREE OF ACCURACY. THE STATE OF NORTH CAROLINA AND ITS AGENCIES MAKE NO WARRANTY, EXPRESS OR IMPLIED, AS TO THE ACCURACY, COMPLETENESS, OR SUITABILITY OF THIS MAP FOR ANY PURPOSE. THE INFORMATION SHOWN ON THIS MAP WAS OBTAINED FROM AERIAL PHOTOGRAPHS AND OTHER SOURCES. THE STATE OF NORTH CAROLINA AND ITS AGENCIES MAKE NO WARRANTY, EXPRESS OR IMPLIED, AS TO THE ACCURACY, COMPLETENESS, OR SUITABILITY OF THIS MAP FOR ANY PURPOSE. THE INFORMATION SHOWN ON THIS MAP WAS OBTAINED FROM AERIAL PHOTOGRAPHS AND OTHER SOURCES.

COPIES OF THIS MAP ARE AVAILABLE TO THE PUBLIC AT A FORMAL COST. CONTACT US TO ORDER.  
 1-800-368-3333  
 919-884-8400



**LEGEND**

- INTERSTATE US NC Divided Hwy
- UNPAVED SURFACED ROAD
- HARD SURFACED ROAD
- PROFESSIONALLY DRAWN ROAD
- PROJECTED LOCATION
- INTERSECTION DISTANCE
- STANDARD ROAD BRIDGE
- RAILROAD BRIDGE
- DRAW SPAN ON BRIDGE
- PEDESTRIAN BRIDGE
- PEDESTRIAN WALKWAY
- PEDESTRIAN UNDERPASS
- VEHICLE UNDERPASS
- TUNNEL
- CULVERT
- PIPE
- INTERSTATE HIGHWAY
- U.S. NUMBERED HIGHWAY
- N.C. NUMBERED HIGHWAY
- U.S. NUMBERED BICYCLE ROUTE
- N.C. NUMBERED BICYCLE ROUTE
- INTERSTATE BICYCLE NUMBER
- SECONDARY ROAD NUMBER
- UTILITY LINES
- RAILROAD LINE
- RAILROAD STATION
- INSI AREA
- STATE LINE
- COUNTY LINE
- SMOOTHED URBAN BOUNDARIES
- CITY LIMITS
- FERRY ROUTE AND RAMP
- NARROW CREEK OR STREAM
- WIDE RIVER OR CREEK
- RESERVOIR, POND OR LAKE W/ ISLAND
- DAM OR DAM WITH LOCK
- WATERFALL
- SWAMP
- COMMUNITY
- COUNTY SEAT
- SCHOOL
- COLLEGE OR UNIVERSITY
- HOSPITAL
- COAST GUARD STATION
- CHURCH
- CHURCH WITH CEMETERY
- CEMETERY
- PATROL STATION
- CORRECTION OR PENAL INSTITUTION
- QUARRY
- MINI-OR PIT
- HIGHWAY GARAGE OR MAINT. YARD
- HIGHWAY DIV. OR DIST. OFFICE
- MILITARY POST
- WEIGH STATION
- FARMGROUNDS
- HISTORICAL SITE
- POINTS OF INTEREST
- POST OFFICE
- STATE FOREST
- LIGHTHOUSE
- MOUNTAIN SUMMIT
- MOUNTAIN GAP
- OVERLOOK
- REST AREA
- VISITOR CENTER AREA
- WELCOME CENTER AREA
- AIRPORT
- MILITARY AIRPORT
- NATIONAL / STATE FOREST BOUNDARY
- WILDLIFE REFUGE
- NATIONAL / STATE PARK BOUNDARY
- GAME LANDS BOUNDARY
- MILITARY RESERVATION BOUNDARY
- INDIAN RESERVATION BOUNDARY



**RANDOLPH COUNTY**  
**NORTH CAROLINA**

PREPARED BY THE  
 NORTH CAROLINA DEPARTMENT OF TRANSPORTATION  
 OPERATIONS PROGRAM MANAGEMENT UNIT - MAPPING SECTION  
 IN COOPERATION WITH THE  
 U.S. DEPARTMENT OF TRANSPORTATION  
 FEDERAL HIGHWAY ADMINISTRATION

SCALE  
 0 1 MILES

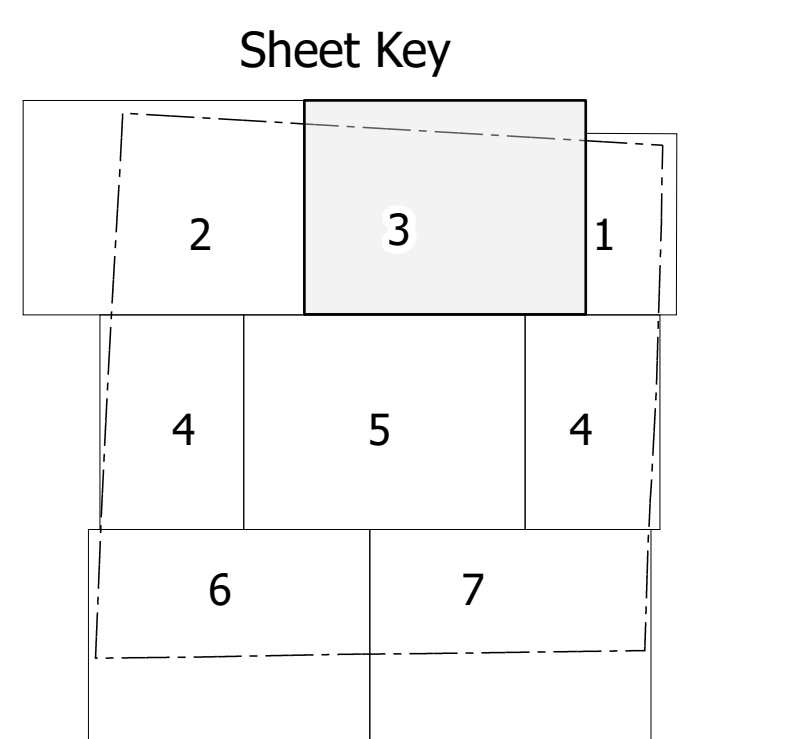
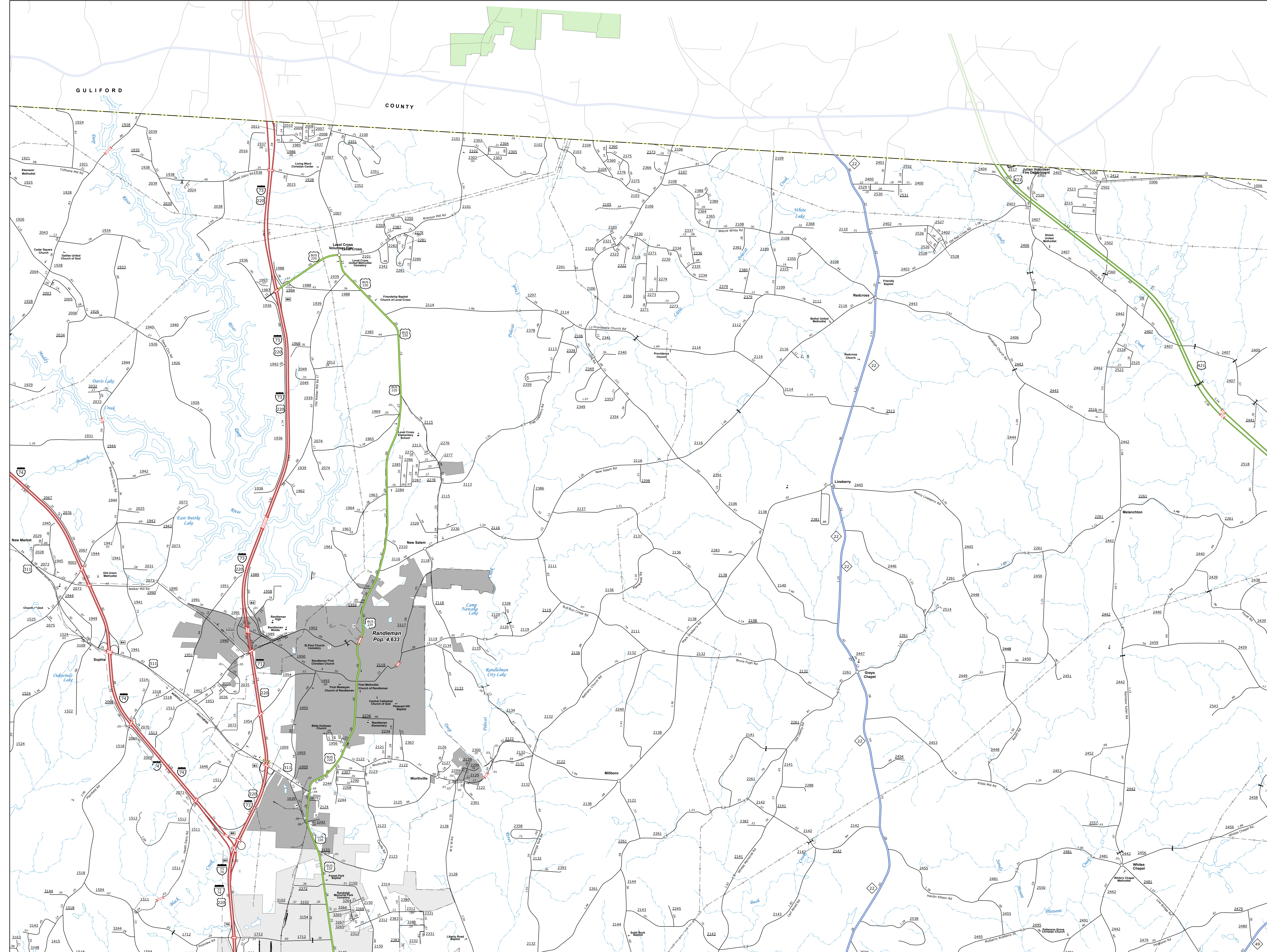
NORTH CAROLINA PLANE COORDINATE SYSTEM  
 LAMBERT CONFORMAL CONIC PROJECTION

SHEET 2 of 7



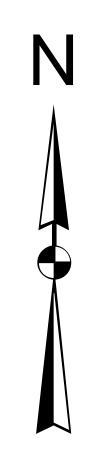
THIS IS A PRELIMINARY MAP. THE MAP IS SUBJECT TO CHANGE WITHOUT NOTICE. THE DATA IS PROVIDED FOR INFORMATIONAL PURPOSES ONLY. THE USER ASSUMES ALL LIABILITY FOR ANY USE OF THIS MAP. THE STATE OF NORTH CAROLINA DEPARTMENT OF TRANSPORTATION OPERATIONS PROGRAM MANAGEMENT UNIT - MAPPING SECTION IS NOT RESPONSIBLE FOR ANY ERRORS OR OMISSIONS. THE INFORMATION ON THIS MAP WAS LAST UPDATED IN 2024.

PORTION OF THIS MAP IS AVAILABLE TO THE PUBLIC AT AN ANNUAL COST CONTRACT US TO ORDER. CONTACT: (704) 769-4000. WWW.NCSTATEMAPS.COM



### LEGEND

- INTERSTATE US (Red line)
- INTERSTATE NC (Blue line)
- Divided Hwy (Green line)
- Undivided Hwy (Black line)
- BLUE RIDGE PARKWAY (Yellow line)
- UNPAVED SURFACED ROAD (Dashed line)
- HARD SURFACED ROAD (Solid line)
- NON-SYSTEM ROAD (Dotted line)
- PROVISIONALLY DRAWN ROAD (Thin solid line)
- PROJECTED LOCATION (Dashed line)
- INTERSECTION DISTANCE (Line with 'X' markers)
- STANDARD ROAD BRIDGE (Line with bridge symbol)
- RAILROAD BRIDGE (Line with bridge symbol)
- DRAW SPAN ON BRIDGE (Line with bridge symbol)
- PEDESTRIAN BRIDGE (Line with bridge symbol)
- PEDESTRIAN WALKWAY (Line with bridge symbol)
- PEDESTRIAN UNDERPASS (Line with bridge symbol)
- VEHICULAR UNDERPASS (Line with bridge symbol)
- TUNNEL (Line with bridge symbol)
- CULVERT (Line with bridge symbol)
- PIPE (Line with bridge symbol)
- INTERSTATE HIGHWAY (Shield with 'I' and number)
- U.S. NUMBERED HIGHWAY (Shield with 'U.S.' and number)
- N.C. NUMBERED HIGHWAY (Shield with 'N.C.' and number)
- U.S. NUMBERED BICYCLE ROUTE (Shield with 'U.S.' and number)
- N.C. NUMBERED BICYCLE ROUTE (Shield with 'N.C.' and number)
- INTERSTATE INTERCHANGE NUMBER (Shield with 'I' and number)
- SECONDARY ROAD NUMBER (Shield with 'S' and number)
- CITY LIMITS (Dashed line)
- URBAN LIMITS (Dotted line)
- SMOOTHED URBAN BOUNDARIES (Dotted line)
- CITY LIMITS (Dashed line)
- URBAN LIMITS (Dotted line)
- SMOOTHED URBAN BOUNDARIES (Dotted line)
- ROAD ROUTE AND RAMP (Line with arrow)
- NARROW CREEK OR STREAM (Blue line)
- WIDE RIVER OR CREEK (Blue line)
- RESERVOIR, POND OR LAKE W/ ISLAND (Blue area)
- DAM OR DAM WITH LOCK (Blue area)
- WATERFALL (Blue area)
- SWAMP (Blue area)
- COMMUNITY (Blue circle)
- COUNTY SEAT (Blue circle)
- SCHOOL (Blue circle)
- COLLEGE OR UNIVERSITY (Blue circle)
- HOSPITAL (Blue circle)
- COAST GUARD STATION (Blue circle)
- CHURCH (Blue circle)
- CHURCH WITH CEMETERY (Blue circle)
- CEMETERY (Blue circle)
- PARK STATION (Blue circle)
- CORRECTION OR PENAL INSTITUTION (Blue circle)
- QUARRY (Blue circle)
- MINI OR PIT (Blue circle)
- HIGHWAY GARAGE OR MAINT. YARD (Blue circle)
- HIGHWAY DIV. OR DIST. OFFICE (Blue circle)
- MILITARY POST (Blue circle)
- WEIGH STATION (Blue circle)
- SUBSTATION (Blue circle)
- HISTORICAL SITE (Blue circle)
- POINTS OF INTEREST (Blue circle)
- POST OFFICE (Blue circle)
- STATE FOREST (Blue circle)
- LIGHTHOUSE (Blue circle)
- MOUNTAIN SUMMIT (Blue circle)
- MOUNTAIN GAP (Blue circle)
- OVERLOOK (Blue circle)
- REST AREA (Blue circle)
- VISITOR CTR REST AREA (Blue circle)
- WELCOME CTR REST AREA (Blue circle)
- AIRPORT (Blue circle)
- MILITARY AIRPORT (Blue circle)
- NATIONAL / STATE FOREST BOUNDARY (Green line)
- WILDLIFE REFUGE (Green line)
- NATIONAL / STATE PARK BOUNDARY (Green line)
- GAME LANDS BOUNDARY (Green line)
- MILITARY RESERVATION BOUNDARY (Green line)
- INDIAN RESERVATION BOUNDARY (Green line)



## RANDOLPH COUNTY

### NORTH CAROLINA

PREPARED BY THE  
NORTH CAROLINA DEPARTMENT OF TRANSPORTATION  
OPERATIONS PROGRAM MANAGEMENT UNIT - MAPPING SECTION  
IN COOPERATION WITH THE  
U.S. DEPARTMENT OF TRANSPORTATION  
FEDERAL HIGHWAY ADMINISTRATION

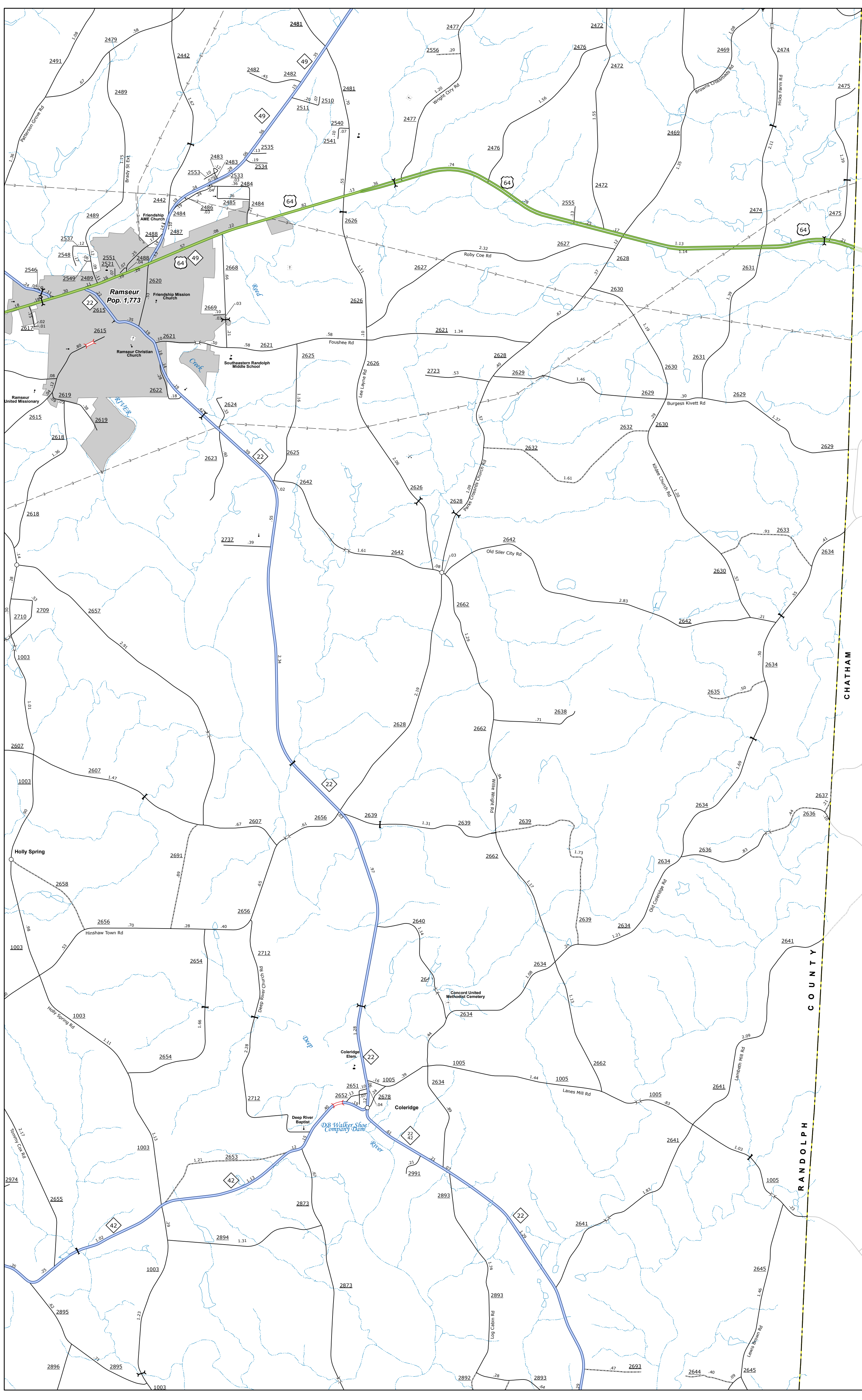
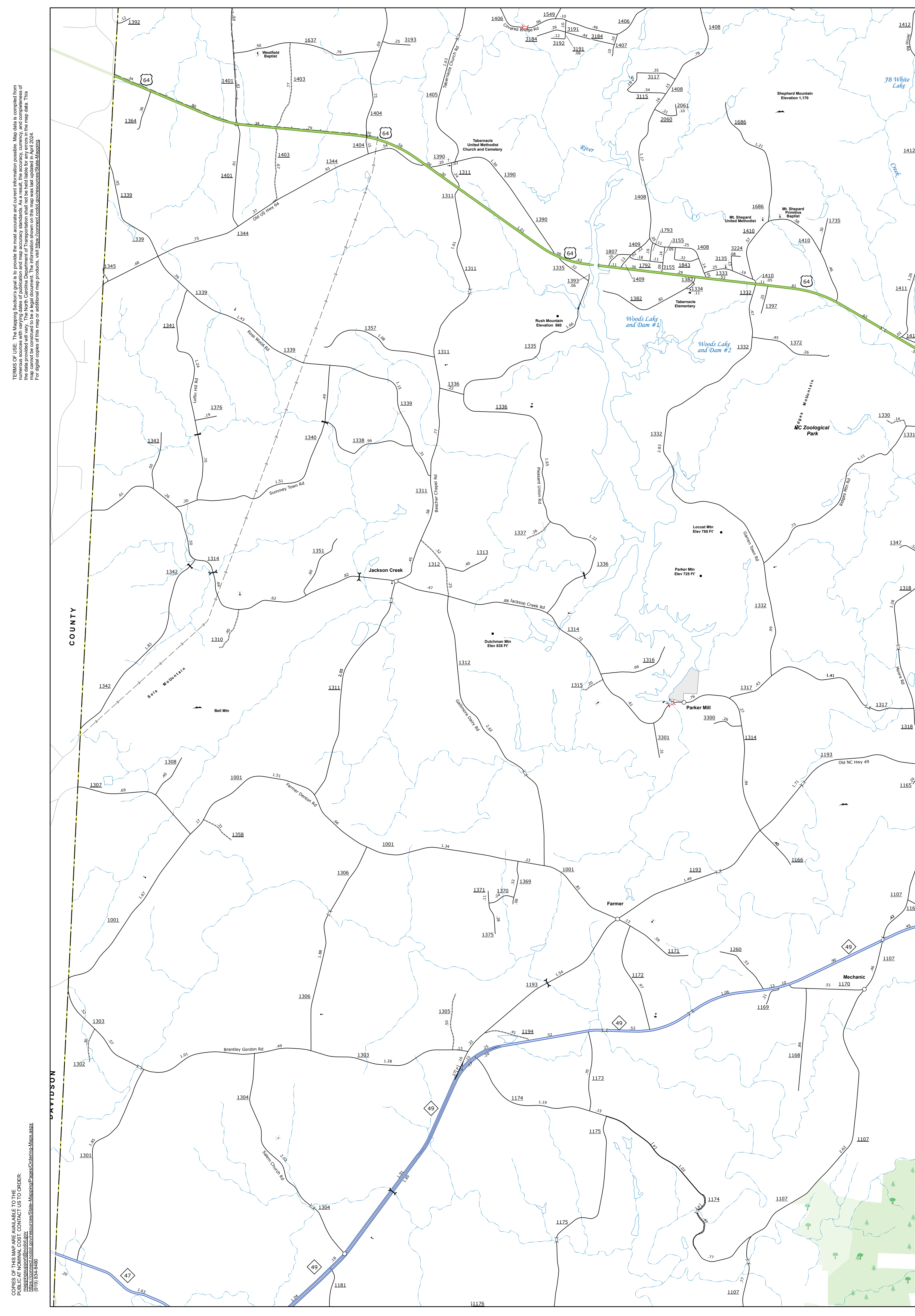
SCALE  
0 1 2 MILES

NORTH CAROLINA PLANE COORDINATE SYSTEM  
LAMBERT CONFORMAL CONIC PROJECTION

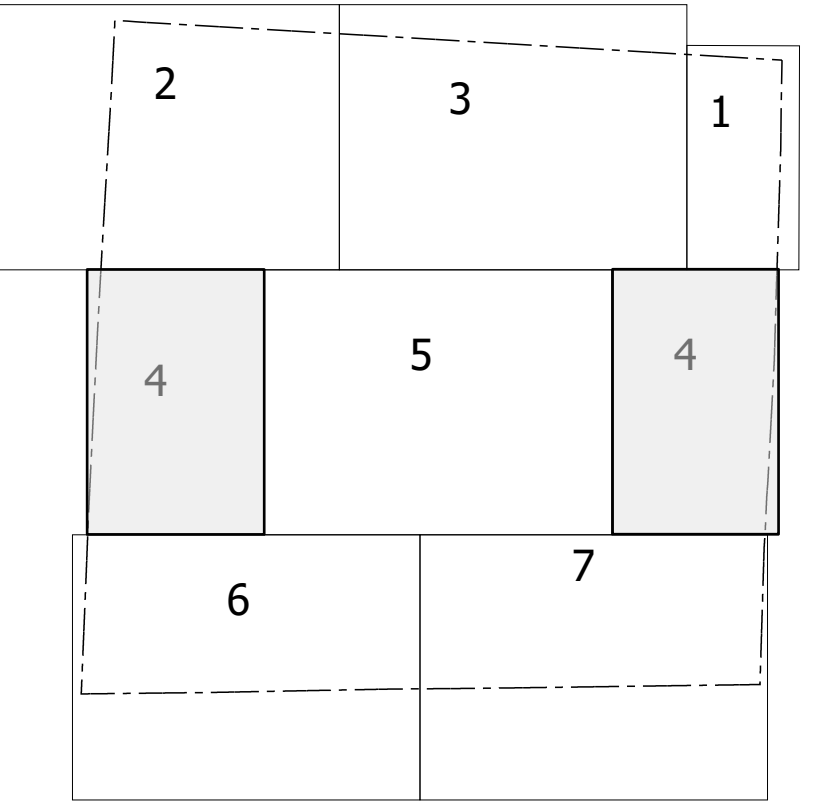
DIVISION 8 DISTRICT 1 RANDOLPH COUNTY NORTH CAROLINA FIPS 150

SHEET 3 OF 7





Sheet Key



**LEGEND**

- INTERSTATE US NC Divided Hwy
- INTERSTATE US NC Undivided Hwy
- BLUE RIDGE PARKWAY
- UNPAVED SURFACED ROAD
- HAZARD SURFACED ROAD
- NON-SYSTEM ROAD
- PROVISIONALLY DRAWN ROAD
- PROHIBITED LOCATION
- INTERSECTION DISTANCE
- STANDARD ROAD BRIDGE
- RAILROAD BRIDGE
- DRAW SPAN ON BRIDGE
- PEDESTRIAN BRIDGE
- PEDESTRIAN WALKWAY
- PEDESTRIAN UNDERPASS
- VEHICULAR UNDERPASS
- TUNNEL
- CULVERT
- PIPE
- INTERSTATE HIGHWAY
- U.S. NUMBERED HIGHWAY
- N.C. NUMBERED HIGHWAY
- U.S. NUMBERED BICYCLE ROUTE
- N.C. NUMBERED BICYCLE ROUTE
- INTERSTATE INTERCHANGE NUMBER
- STANDARD ROAD NUMBER
- UTILITY LINES
- RAILROAD LINE
- RAILROAD STATION
- INSET AREA
- STATE LINE
- COUNTY LINE
- SMOOTHED URBAN BOUNDARIES
- CITY LIMITS
- FERRY ROUTE AND RAMP
- NARROW CREEK OR STREAM
- WIDE RIVER OR CREEK
- RESERVOIR, POND OR LAKE W/ ISLAND
- DAM OR DAM WITH LOCK
- WATERFALL
- SWAMP
- COMMUNITY
- COUNTY SEAT
- SCHOOL
- COLLEGE OR UNIVERSITY
- HOSPITAL
- COAST GUARD STATION
- CHURCH
- CHURCH WITH CEMETERY
- CEMETERY
- PAROLE STATION
- CORRECTION OR PENAL INSTITUTION
- QUARRY
- MINE OR PIT
- HIGHWAY GARAGE OR MAINT. YARD
- HIGHWAY DIV. OR DIST. OFFICE
- MILITARY POST
- WRECK STATION
- PARKBENCHES
- HISTORICAL SITE
- POINTS OF INTEREST
- POST OFFICE
- STATE FOREST
- LIGHTHOUSE
- MOUNTAIN SUMMIT
- MOUNTAIN GAP
- OVERLOOK
- REST AREA
- VISITOR CTR/REST AREA
- WELCOME CTR/REST AREA
- AIRPORT
- MILITARY AIRPORT
- NATIONAL / STATE FOREST BOUNDARY
- WILDLIFE REFUGE
- NATIONAL / STATE PARK BOUNDARY
- GAME LANDS BOUNDARY
- MILITARY RESERVATION BOUNDARY
- INDIAN RESERVATION BOUNDARY

**RANDOLPH COUNTY**  
NORTH CAROLINA

PREPARED BY THE  
NORTH CAROLINA DEPARTMENT OF TRANSPORTATION  
OPERATIONS PROGRAM MANAGEMENT UNIT - MAPPING SECTION  
IN COOPERATION WITH THE  
U.S. DEPARTMENT OF TRANSPORTATION  
FEDERAL HIGHWAY ADMINISTRATION

SCALE  
0 1 2 MILES

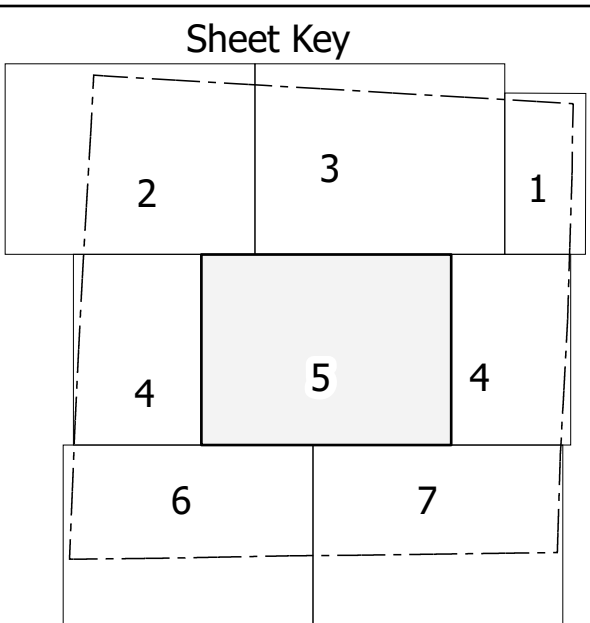
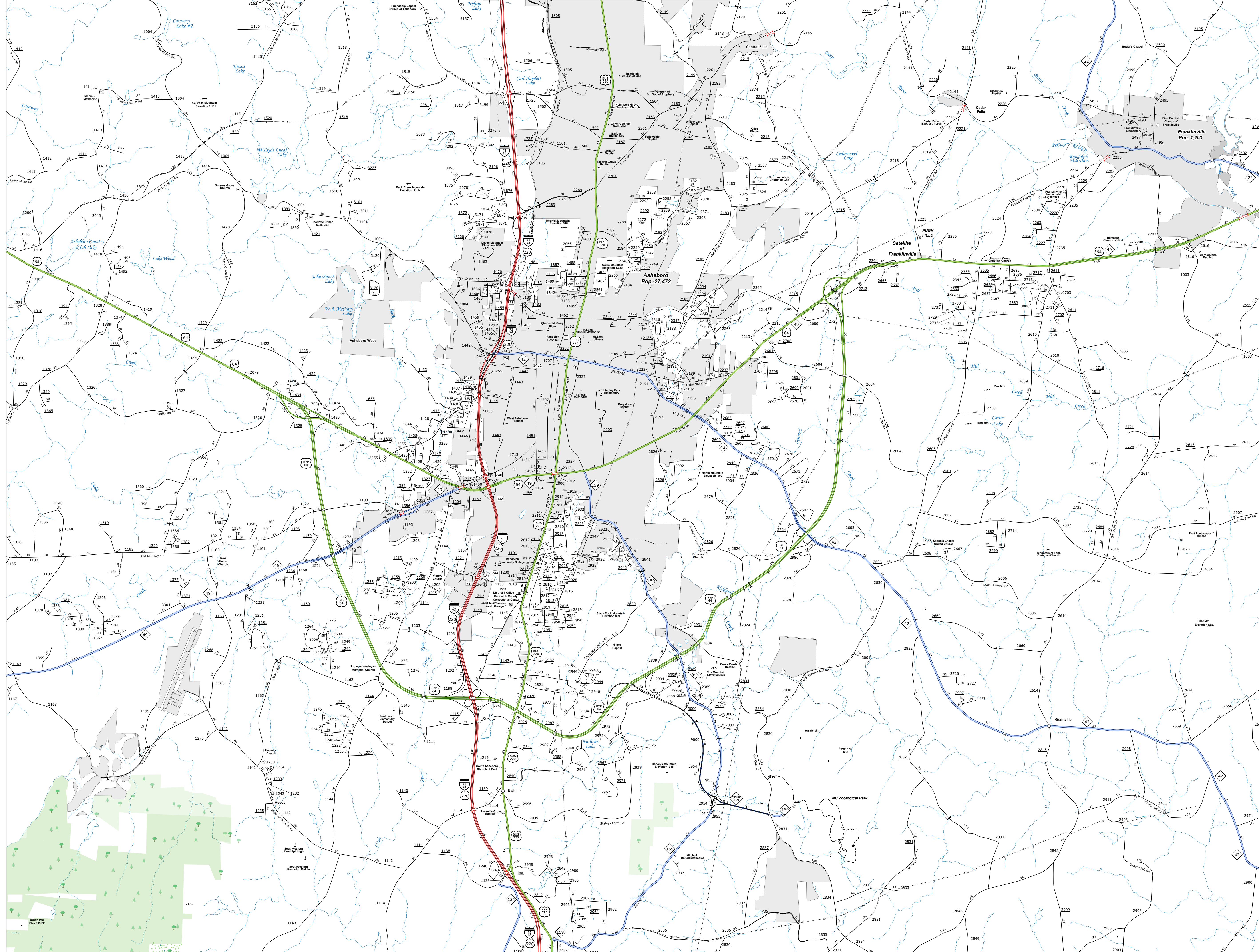
NORTH CAROLINA PLANE COORDINATE SYSTEM  
LAMBERT CONFORMAL CONIC PROJECTION

SHEET 4 of 7

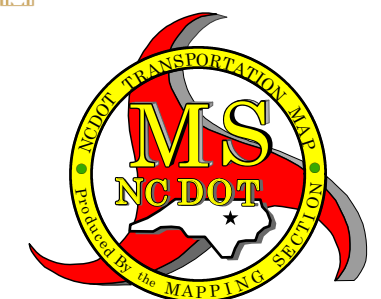
THIS IS A PUBLIC MAP. THE MAP IS THE PROPERTY OF THE STATE OF NORTH CAROLINA. THE STATE OF NORTH CAROLINA IS NOT RESPONSIBLE FOR ANY ERRORS OR OMISSIONS. THE STATE OF NORTH CAROLINA IS NOT RESPONSIBLE FOR ANY DAMAGES, INCLUDING CONSEQUENTIAL DAMAGES, ARISING FROM THE USE OF THIS MAP. THE STATE OF NORTH CAROLINA IS NOT RESPONSIBLE FOR ANY DAMAGES, INCLUDING CONSEQUENTIAL DAMAGES, ARISING FROM THE USE OF THIS MAP. THE STATE OF NORTH CAROLINA IS NOT RESPONSIBLE FOR ANY DAMAGES, INCLUDING CONSEQUENTIAL DAMAGES, ARISING FROM THE USE OF THIS MAP.



THIS MAP IS THE PROPERTY OF THE STATE OF NORTH CAROLINA. IT IS TO BE USED FOR OFFICIAL PURPOSES ONLY. ANY REPRODUCTION OR DISTRIBUTION OF THIS MAP WITHOUT THE WRITTEN PERMISSION OF THE STATE OF NORTH CAROLINA IS STRICTLY PROHIBITED. THE STATE OF NORTH CAROLINA ASSUMES NO LIABILITY FOR ANY ERRORS OR OMISSIONS IN THIS MAP. THE INFORMATION ON THIS MAP WAS OBTAINED FROM THE MOST CURRENT AND ACCURATE DATA AVAILABLE AT THE TIME OF PRINTING. THE STATE OF NORTH CAROLINA DOES NOT WARRANT THE ACCURACY OF THIS MAP.

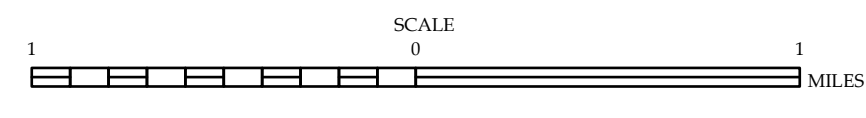


- LEGEND**
- INTERSTATE US NC Divided Hwy Undivided Hwy
  - BLUE BRIDGE PARKWAY
  - UNPAVED SUBGRADE ROAD
  - HARD SURFACED ROAD
  - NON-SYSTEM ROAD
  - PROVISIONALLY DRAWN ROAD
  - PROPOSED LOCAL ROAD
  - INTERSECTION DISTANCE
  - STANDARD ROAD BRIDGE
  - RAILROAD BRIDGE
  - DRAW SPAN ON BRIDGE
  - PEDESTRIAN BRIDGE
  - PEDESTRIAN WALKWAY
  - PEDESTRIAN UNDERPASS
  - VEHICULAR UNDERPASS
  - TUNNEL
  - CULVERT
  - PIPE
  - INTERSTATE HIGHWAY
  - U.S. NUMBERED HIGHWAY
  - U.S. NUMBERED BI-CYCLE ROUTE
  - N.C. NUMBERED BI-CYCLE ROUTE
  - INTERSTATE INTERCHANGE NUMBER
  - SECONDARY ROAD NUMBER
  - UTILITY LINES
  - RAILROAD LINE
  - RAILROAD STATION
  - POST OFFICE
  - STATE LINE
  - COUNTY LINE
  - SMOOTHED URBAN BOUNDARIES
  - CITY LIMITS
  - FERRY ROUTE AND RAMP
  - NARROW CREEK OR STREAM
  - WIDE RIVER OR CREEK
  - RESERVOIR, POND OR LAKE W/ ISLAND
  - DAM OR DAM WITH LOCK
  - WATERFALL
  - SWAMP
  - COMMUNITY
  - COUNTY SEAT
  - SCHOOL
  - COLLEGE OR UNIVERSITY
  - HOSPITAL
  - COAST GUARD STATION
  - CHURCH
  - CHURCH WITH CEMETERY
  - CEMETERY
  - PATROL STATION
  - CORRECTION OR PENAL INSTITUTION
  - QUARRY
  - MINE OR PIT
  - HIGHWAY GARAGE OR MAINT. YARD
  - HIGHWAY DIV. OR DIST. OFFICE
  - MILITARY POST
  - WEIGH STATION
  - RAILROADS
  - HISTORICAL SITE
  - POINTS OF INTEREST
  - STATE FOREST
  - LIighthouse
  - MOUNTAIN SUMMIT
  - MOUNTAIN GAP
  - OVERLOOK
  - REST AREA
  - VISITOR CTR/REST AREA
  - WELCOME CTR/REST AREA
  - AIRPORT
  - MILITARY AIRPORT
  - NATIONAL / STATE FOREST BOUNDARY
  - WILDLIFE REFUGE
  - NATIONAL / STATE PARK BOUNDARY
  - GAME LANDS BOUNDARY
  - MILITARY RESERVATION BOUNDARY
  - INDIAN RESERVATION BOUNDARY



**RANDOLPH COUNTY**  
NORTH CAROLINA

PREPARED BY THE  
NORTH CAROLINA DEPARTMENT OF TRANSPORTATION  
OPERATIONS PROGRAM MANAGEMENT UNIT - MAPPING SECTION  
IN COOPERATION WITH THE  
U.S. DEPARTMENT OF TRANSPORTATION  
FEDERAL HIGHWAY ADMINISTRATION



NORTH CAROLINA PLANE COORDINATE SYSTEM  
LAMBERT CONFORMAL CONIC PROJECTION

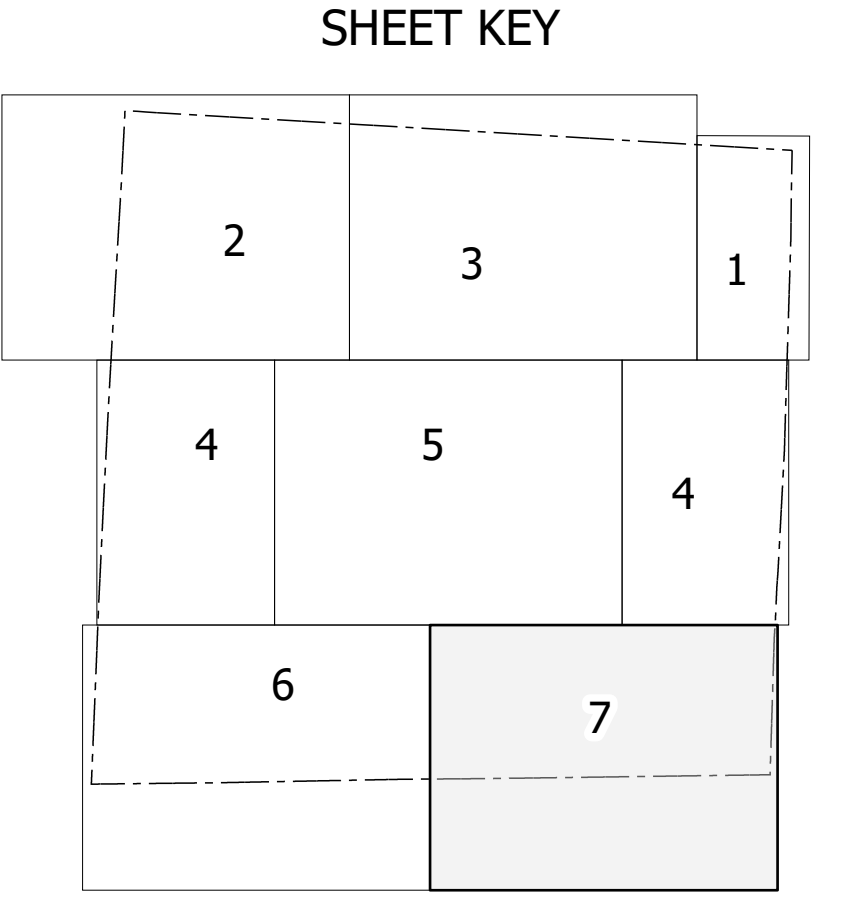
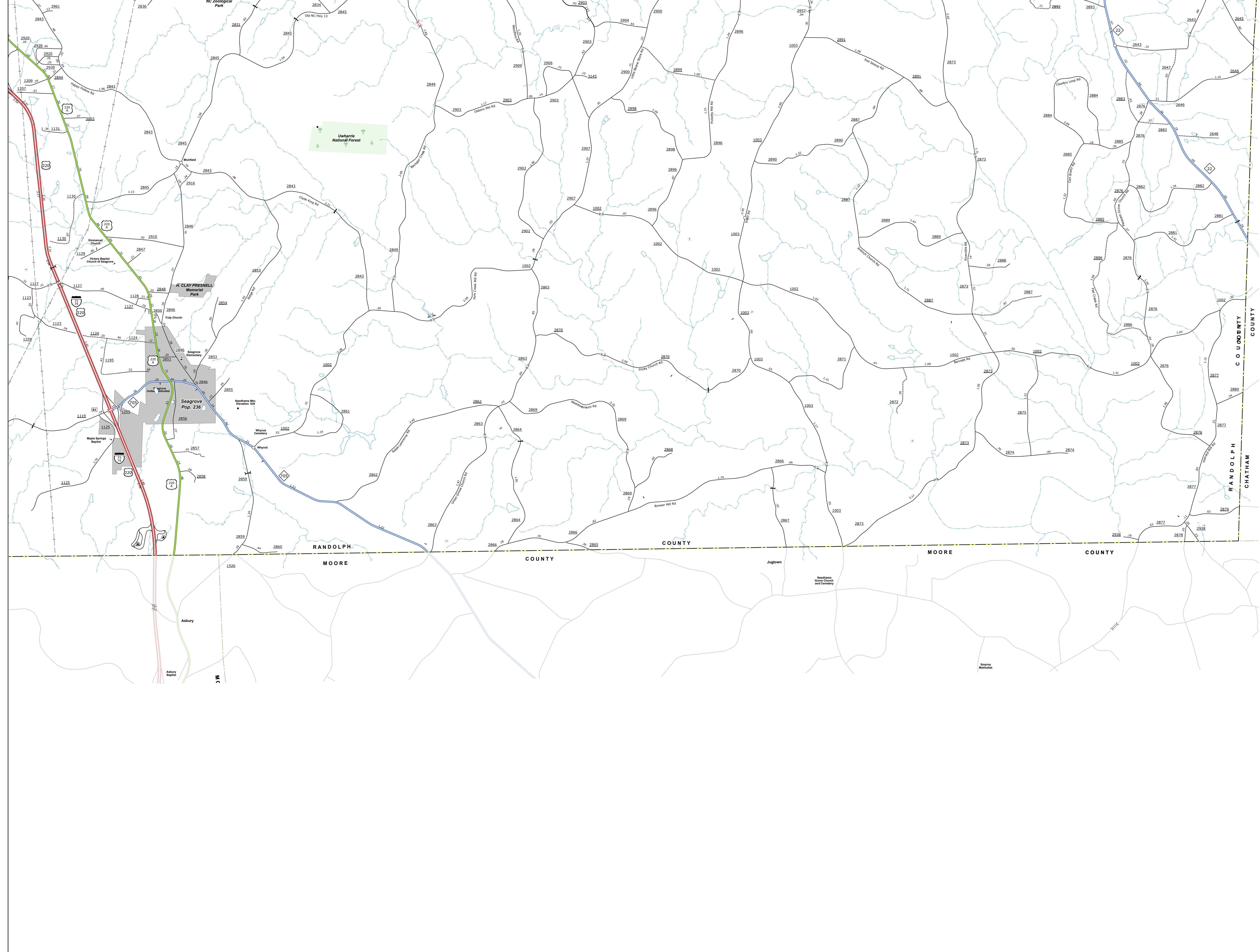
COPIES OF THIS MAP ARE AVAILABLE TO THE PUBLIC AT A FORMAL COST CONTRACT UP TO ORDER.  
3300 SHELBY DRIVE, SUITE 200, RALEIGH, NC 27609  
(919) 874-8400







THIS IS A PRELIMINARY MAP. THE MAP IS SUBJECT TO CHANGE WITHOUT NOTICE. THE STATE OF NORTH CAROLINA DEPARTMENT OF TRANSPORTATION AND THE U.S. DEPARTMENT OF TRANSPORTATION FEDERAL HIGHWAY ADMINISTRATION ARE NOT RESPONSIBLE FOR ANY ERRORS OR OMISSIONS. THE USER ASSUMES ALL LIABILITY FOR ANY DAMAGE OR INJURY RESULTING FROM THE USE OF THIS MAP. THE INFORMATION ON THIS MAP WAS OBTAINED FROM THE FOLLOWING SOURCES: AERIAL PHOTOGRAPHS, FIELD SURVEYS, AND OTHER SOURCES. THE INFORMATION ON THIS MAP WAS OBTAINED FROM THE FOLLOWING SOURCES: AERIAL PHOTOGRAPHS, FIELD SURVEYS, AND OTHER SOURCES.



### LEGEND

- INTERSTATE US
- INTERSTATE NC
- Divided Hwy
- Undivided Hwy
- BLUE RIDGE PARKWAY
- UNPAVED SURFACED ROAD
- HARD SURFACED ROAD
- NON-SYSTEM ROAD
- PROVISIONALLY DRAWN ROAD
- PROJECTED LOCATION
- INTER-TWO DISTANCE
- STANDARD ROAD BRIDGE
- RAILROAD BRIDGE
- TRUSS SPAN BRIDGE
- PEDESTRIAN BRIDGE
- PEDESTRIAN WALKWAY
- PEDESTRIAN UNDERPASS
- VEHICULAR UNDERPASS
- TUNNEL
- CULVERT
- PIPE
- INTERSTATE HIGHWAY
- U.S. NUMBERED HIGHWAY
- N.C. NUMBERED HIGHWAY
- U.S. NUMBERED BICYCLE ROUTE
- N.C. NUMBERED BICYCLE ROUTE
- INTERSTATE INTERCHANGE NUMBER
- SECONDARY ROAD NUMBER
- TRUCK FREIGHT
- UTILITY LINE
- RAILROAD LINE
- RAILROAD STATION
- POST AREA
- STATE LINE
- COUNTY LINE
- SMOOTHED URBAN BOUNDARIES
- CITY LIMITS
- FERRY ROUTE AND RAMP
- NARROW CREEK OR STREAM
- WIDE RIVER OR CREEK
- RESERVOIR, POND OR LAKE W/ ISLAND
- DAM OR DAM WITH LOCK
- WATERFALL
- SWAMP
- COMMUNITY
- COUNTY SEAT
- SCHOOL
- COLLEGE OR UNIVERSITY
- HOSPITAL
- COAST GUARD STATION
- CHURCH
- CREEK WITH CEMETERY
- CEMETERY
- PATROL STATION
- CORRECTIONS OR PENAL INSTITUTION
- QUARRY
- MINE OR PIT
- HIGHWAY GARAGE OR MAINT. YARD
- HIGHWAY DIV. OR DIST. OFFICE
- MILITARY POST
- WEIGH STATION
- FAIRGROUNDS
- HISTORICAL SITE
- POINTS OF INTEREST
- POST OFFICE
- STATE FOREST
- LIGHTHOUSE
- MOUNTAIN SUMMIT
- MOUNTAIN GAP
- OVERLOOK
- BENT AREA
- VISITOR CTR. REST AREA
- WELCOM. CTR. REST AREA
- AIRPORT
- MILITARY AIRPORT
- NATIONAL / STATE FOREST BOUNDARY
- WILDLIFE REFUGE
- NATIONAL / STATE PARK BOUNDARY
- GAME LANDS BOUNDARY
- MILITARY RESERVATION BOUNDARY
- INDIAN RESERVATION BOUNDARY

**RANDOLPH COUNTY**  
NORTH CAROLINA

PREPARED BY THE  
NORTH CAROLINA DEPARTMENT OF TRANSPORTATION  
OPERATIONS PROGRAM MANAGEMENT UNIT - MAPPING SECTION  
IN COOPERATION WITH THE  
U.S. DEPARTMENT OF TRANSPORTATION  
FEDERAL HIGHWAY ADMINISTRATION

SCALE  
0 1 MILES

NORTH CAROLINA PLANE COORDINATE SYSTEM  
LAMBERT CONFORMAL CONIC PROJECTION

SHEET 7 of 7

CONTACT FOR MORE INFORMATION: RANDOLPH COUNTY PUBLIC WORKS DEPARTMENT, CONTACT US TO ORDER: (704) 334-4400