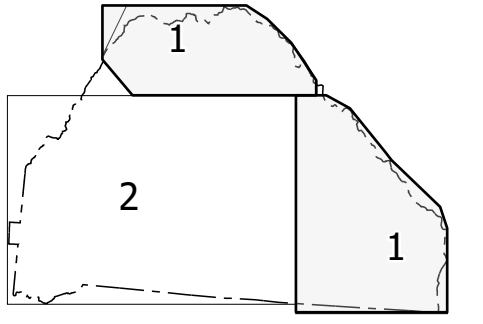
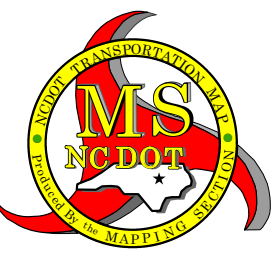
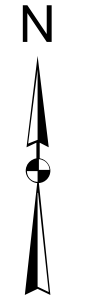


Sheet Key



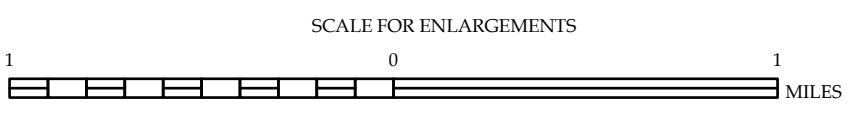
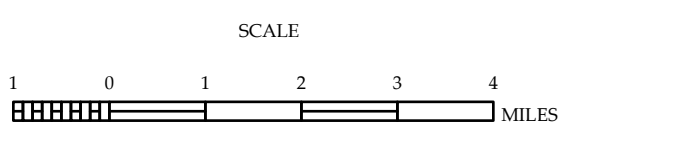
LEGEND

- INTERSTATE US NC
- Divided Hwy
- Undivided Hwy
- BLUE RIDGE PARKWAY
- UNPAVED SURFACE ROAD
- HIGHWAY BRIDGE ROAD
- NO-SYSTEM ROAD
- PROPOSED/PLANNED BRIDGE ROAD
- PROTECTED/ASPHALT
- INTERSECTION
- STANDARD ROAD BRIDGE
- RAILROAD BRIDGE
- IRON SPAN BRIDGE
- PEDESTRIAN BRIDGE
- PEDESTRIAN WALKWAY
- PEDESTRIAN UNDERPASS
- VEHICULAR UNDERPASS
- TUNNEL
- CULVERT
- PVI
- INTERSTATE HIGHWAY
- U.S. NUMBERED HIGHWAY
- N.C. NUMBERED HIGHWAY
- U.S. NUMBERED BI-CYCLE ROUTE
- N.C. NUMBERED BI-CYCLE ROUTE
- INTERSTATE INTERCHANGE NUMBER
- SECTION ROAD NUMBER
- UTILITY LINES
- RAILROAD LINE
- RAILROAD STATION
- INLET AREA
- STATE LINE
- COUNTY LINE
- CITY LIMITS
- FERRY ROUTE
- NARROW GULCH OR STREAM
- WIDE RIVER OR CREEK
- BEACH, POOL OR LAKE W/ ISLAND
- DAM OR DAM WITH LOCK
- WATERFALL
- SWAMP
- COMMUNITY, TOWN OR CITY CENTER
- COUNTY SEAT
- SCHOOL
- COLLEGE OR UNIVERSITY
- HOSPITAL
- COAST GUARD STATION
- CHURCH
- CHURCH WITH CEMETERY
- CEMETERY
- POST OFFICE
- CORRECTION OR PENAL INSTITUTION
- OCULARY
- MINE OR PIT
- HIGHWAY GARAGE OR MAINT. YARD
- HIGHWAY ID. OR DIST. OFFICE
- MILITARY TOWER
- WEIGH STATION
- FABRICATION
- HISTORICAL SITE
- POINTS OF INTEREST
- STATE FOREST
- LIGHTHOUSE
- MONUMENT/SHADE
- OVERLOOK
- REST AREA
- VISITOR REST AREA
- WELCOME CENTER AREA
- AIRPORT
- MILITARY AIRPORT
- HELIPAD
- NATIONAL STATE FOREST BOUNDARY
- WILDLIFE REFUGE
- NATIONAL STATE PARK BOUNDARY
- GAME LANDS BOUNDARY
- MILITARY RESERVATION BOUNDARY
- INDIAN RESERVATION BOUNDARY



**POLK COUNTY
NORTH CAROLINA**

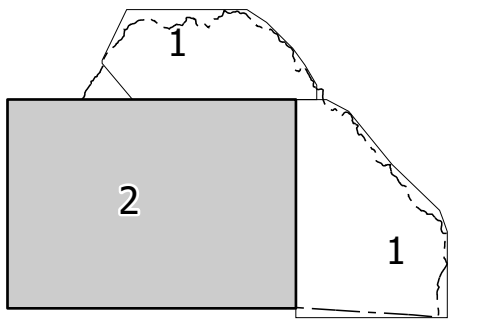
PREPARED BY THE
NORTH CAROLINA DEPARTMENT OF TRANSPORTATION
OPERATIONS PROGRAM MANAGEMENT UNIT - MAPPING SECTION
IN COOPERATION WITH THE
U.S. DEPARTMENT OF TRANSPORTATION
FEDERAL HIGHWAY ADMINISTRATION



COPIES OF THIS MAP ARE AVAILABLE TO THE PUBLIC AT NOMINAL COST. CONTACT US TO ORDER:
maps@ncdot.gov
<https://www.ncdot.gov/resources/State-Mapping/Pages/Ordering-Maps.aspx>
 (919) 834-8480

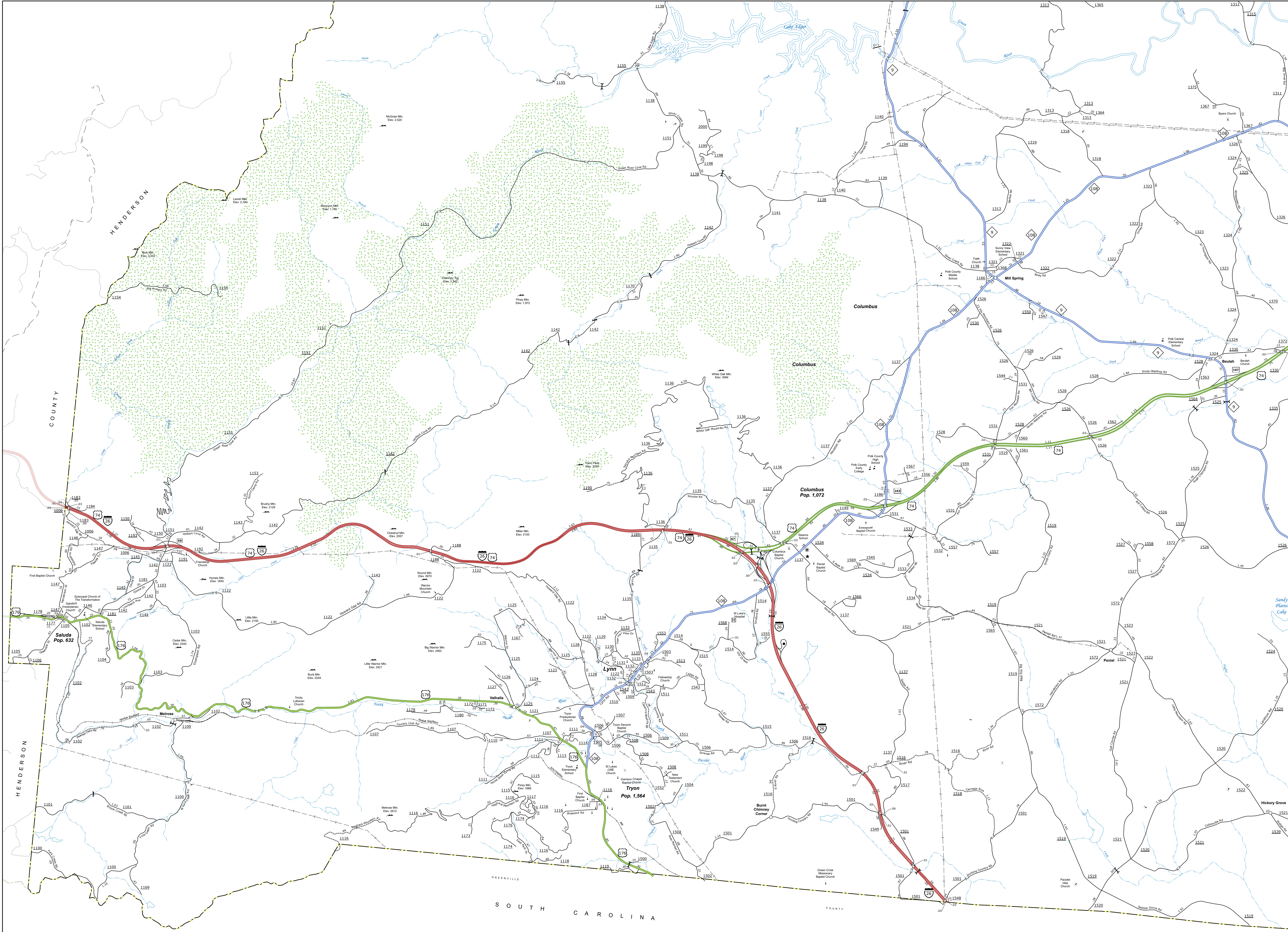
TERMS OF USE: The Mapping Section's goal is to provide the most accurate and current information possible. Map data is compiled from numerous sources with varying dates of publication and map accuracy standards. As a result, the accuracy, currency, and completeness of the data provided will vary. The North Carolina Department of Transportation shall not be held liable for any errors in the map data. This map cannot be construed to be a legal document. The information shown on this map was last updated in April 2024. For digital copies of this map or additional map products, visit <https://www.ncdot.gov/resources/State-Mapping/>

NORTH CAROLINA PLANE COORDINATE SYSTEM
LAMBERT CONFORMAL CONIC PROJECTION



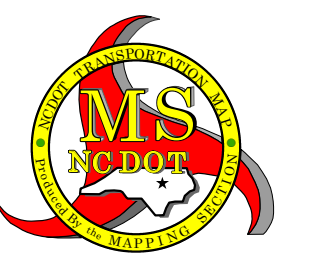
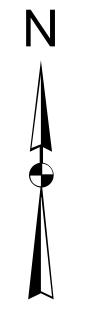
TERMS OF USE: The Mapping Section seeks to provide the most accurate and current information possible. Map data is compiled from...

COPIES OF THIS MAP ARE AVAILABLE TO THE PUBLIC AT A COST OF \$1.00 PER COPY. CONTACT US TO ORDER...



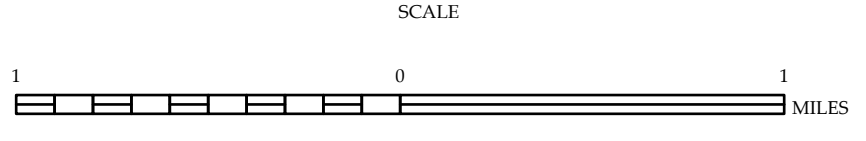
LEGEND

- Legend items including Interstate, US, NC, and various road types like Blue Ridge Parkway, US Numbered Highway, and N.C. Numbered Bicycle Route.



POLK COUNTY NORTH CAROLINA

PREPARED BY THE NORTH CAROLINA DEPARTMENT OF TRANSPORTATION OPERATIONS PROGRAM MANAGEMENT UNIT - MAPPING SECTION...



NORTH CAROLINA PLANE COORDINATE SYSTEM LAMBERT CONFORMAL CONIC PROJECTION