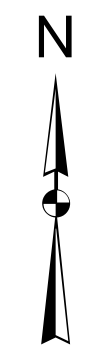
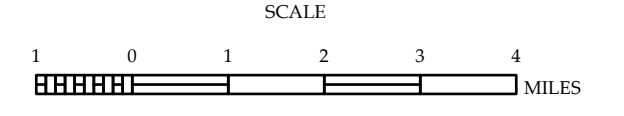


- LEGEND**
- INTERSTATE US NC Divided Hwy Undivided Hwy
 - BLUE RIDGE PARKWAY
 - SNOWD-SURFACED ROAD
 - HARD-SURFACED ROAD
 - NON-SYSTEM ROAD
 - PROFESSIONALLY DRAWN ROAD
 - PROTECTED LOCATION
 - INTERSECTION DISTANCE
 - STANDARD ROAD BRIDGE
 - RAILROAD BRIDGE
 - DRAW SPAN ON BRIDGE
 - PEDESTRIAN BRIDGE
 - PEDESTRIAN WALKWAY
 - PEDESTRIAN UNDERPASS
 - VEHICULAR UNDERPASS
 - TUNNEL
 - CULVERT
 - PIPE
 - INTERSTATE HIGHWAY
 - U.S. NUMBERED HIGHWAY
 - N.C. NUMBERED HIGHWAY
 - U.S. NUMBERED BICYCLE ROUTE
 - N.C. NUMBERED BICYCLE ROUTE
 - INTERSTATE INTERCHANGE NUMBER
 - SECONDARY ROAD NUMBER
 - UTILITY LINES
 - RAILROAD LINE
 - RAILROAD STATION
 - INSULA
 - STATE LINE
 - COUNTY LINE
 - SMOOTHED URBAN BOUNDARIES
 - CITY LIMITS
 - FERRY ROUTE AND RAMP
 - NARROW CREEK OR STREAM
 - WIDE RIVER OR CREEK
 - RESERVOIR, POND OR LAKE W/ ISLAND
 - DAM OR DAM W/ WEILOCK
 - WATERFALL
 - SWAMP
 - COMMUNITY
 - COUNTY SEAT
 - SCHOOL
 - COLLEGE OR UNIVERSITY
 - HOSPITAL
 - COAST GUARD STATION
 - CHURCH
 - CHURCH WITH CEMETERY
 - CEMETERY
 - PATROL STATION
 - CORRECTION OR PENAL INSTITUTION
 - QUARRY
 - MINE OR PIT
 - HIGHWAY GARAGE OR MAINT. YARD
 - HIGHWAY DIV. OR DIST. OFFICE
 - MILITARY POST
 - WEIGH STATION
 - FAIRGROUNDS
 - HISTORICAL SITE
 - POINTS OF INTEREST
 - POST OFFICE
 - STATE FOREST
 - LIGHTHOUSE
 - MOUNTAIN SUMMIT
 - MOUNTAIN GAP
 - OVERLOOK
 - REST AREA
 - VISITOR CTR. REST AREA
 - WELCOME CTR. REST AREA
 - AIRPORT
 - MILITARY AIRPORT
 - NATIONAL / STATE FOREST BOUNDARY
 - WILDLIFE REFUGE
 - NATIONAL / STATE PARK BOUNDARY
 - GAME LANDS BOUNDARY
 - MILITARY RESERVATION BOUNDARY
 - INDIAN RESERVATION BOUNDARY



**MONTGOMERY COUNTY
NORTH CAROLINA**

PREPARED BY THE
NORTH CAROLINA DEPARTMENT OF TRANSPORTATION
OPERATIONS PROGRAM MANAGEMENT UNIT - MAPPING SECTION
IN COOPERATION WITH THE
U.S. DEPARTMENT OF TRANSPORTATION
FEDERAL HIGHWAY ADMINISTRATION



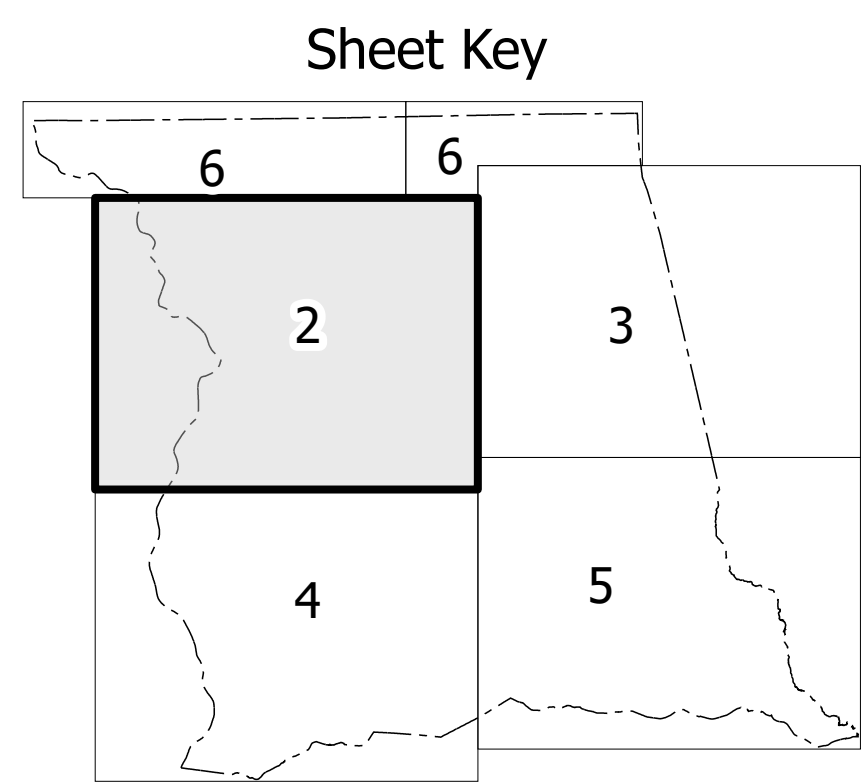
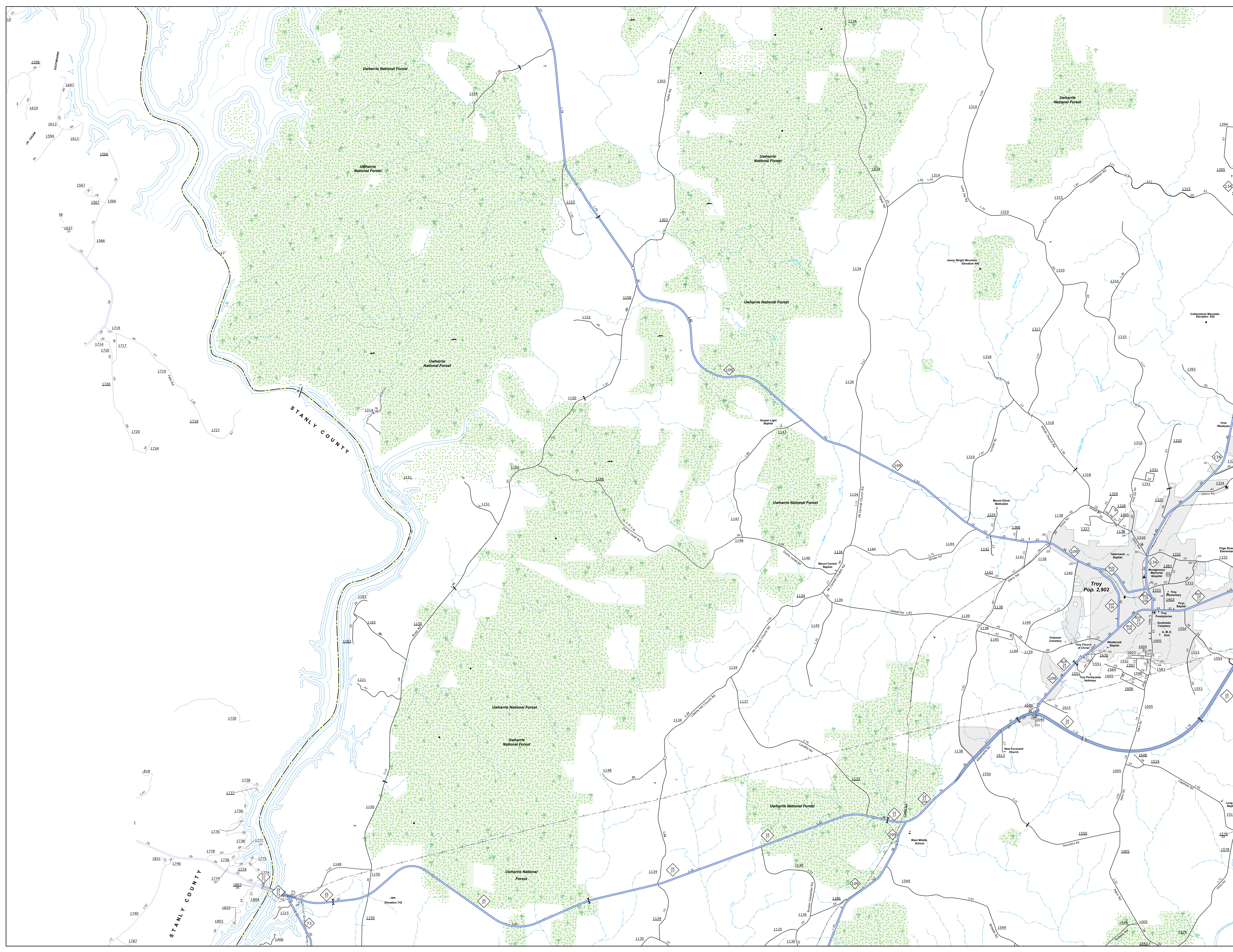
NORTH CAROLINA PLANE COORDINATE SYSTEM
LAMBERT CONFORMAL CONIC PROJECTION

THE STATE OF NORTH CAROLINA, through the Department of Transportation, is the copyright owner of this map. The data is the property of the State of North Carolina and is not to be used for any other purpose. The accuracy, completeness, and timeliness of the information is not guaranteed. The information shown on this map was last updated in February 2024. For digital copies of this map or additional map products, visit <https://www.ncdot.gov/Information/Maps/Products/Pages/MapProducts.aspx>.

COURTESY OF THE STATE OF NORTH CAROLINA, THROUGH THE DEPARTMENT OF TRANSPORTATION, IS THE COPYRIGHT OWNER OF THIS MAP. THE DATA IS THE PROPERTY OF THE STATE OF NORTH CAROLINA AND IS NOT TO BE USED FOR ANY OTHER PURPOSE. THE ACCURACY, COMPLETENESS, AND TIMELINESS OF THE INFORMATION IS NOT GUARANTEED. THE INFORMATION SHOWN ON THIS MAP WAS LAST UPDATED IN FEBRUARY 2024. FOR DIGITAL COPIES OF THIS MAP OR ADDITIONAL MAP PRODUCTS, VISIT <https://www.ncdot.gov/Information/Maps/Products/Pages/MapProducts.aspx>.

THIS MAP IS A SERVICE TO THE PUBLIC. THE MONTGOMERY COUNTY TRANSPORTATION DEPARTMENT HAS MADE EVERY EFFORT TO PROVIDE AN ACCURATE MAP. HOWEVER, THE ACCURACY OF THE INFORMATION SHOWN ON THIS MAP IS NOT GUARANTEED. THE INFORMATION SHOWN ON THIS MAP IS FOR INFORMATIONAL PURPOSES ONLY. THE INFORMATION SHOWN ON THIS MAP IS NOT TO BE USED FOR ANY OTHER PURPOSE. THE INFORMATION SHOWN ON THIS MAP IS NOT TO BE USED FOR ANY OTHER PURPOSE. THE INFORMATION SHOWN ON THIS MAP IS NOT TO BE USED FOR ANY OTHER PURPOSE.

COPIES OF THIS MAP ARE AVAILABLE TO THE PUBLIC AT AN ANNUAL COST CONTACT US TO ORDER. (919) 333-3300



LEGEND

- INTERSTATE US NC
- UNPAVED SURFACED ROAD
- HARD SURFACED ROAD
- NON-SYSTEM ROAD
- PROFESSIONALLY DRAWN ROAD
- PROJECTED LOCATION
- INTERSECTION DISTANCE
- STANDARD ROAD BRIDGE
- RAILROAD BRIDGE
- DRAW SPAN OR BRIDGE
- PEDESTRIAN BRIDGE
- PEDESTRIAN WALKWAY
- PEDESTRIAN UNDERPASS
- VEHICULAR UNDERPASS
- TUNNEL
- CULVERT
- PIPE
- INTERSTATE HIGHWAY
- U.S. NUMBERED HIGHWAY
- N.C. NUMBERED HIGHWAY
- U.S. NUMBERED BICYCLE ROUTE
- N.C. NUMBERED BICYCLE ROUTE
- INTERSTATE INTERCHANGE NUMBER
- SECONDARY ROAD NUMBER
- UTILITY LINES
- RAILROAD LINE
- RAILROAD STATION
- INSET AREA
- STATE LINE
- COUNTY LINE
- SMOOTHED URBAN BOUNDARIES
- CITY LIMITS
- CIVILIAN
- COMMUNITY
- COUNTY SEAT
- SCHOOL
- COLLEGE OR UNIVERSITY
- HOSPITAL
- COAST GUARD STATION
- CHURCH
- CHURCH WITH CEMETERY
- CEMETERY
- PARK STATION
- CORRECTION OR PENAL INSTITUTION
- QUARRY
- MINE OR PIT
- HIGHWAY GARAGE OR MAINT. YARD
- HIGHWAY DIV. OR DIST. OFFICE
- MILITARY POST
- WEIGH STATION
- FAIRBOARDS
- HISTORICAL SITE
- POINTS OF INTEREST
- POST OFFICE
- STATE FOREST
- LIGHTHOUSE
- MOUNTAIN SUMMIT
- OVERLOOK
- MOUNTAIN GAP
- COVERLOOK
- REST AREA
- VISITOR CTR. REST AREA
- WELCOME CTR. REST AREA
- AIRPORT
- MILITARY AIRPORT
- NATIONAL STATE FOREST BOUNDARY
- WILDLIFE REFUGE
- FAIRBOARDS
- NATIONAL STATE PARK BOUNDARY
- GAME LANDS BOUNDARY
- MILITARY RESERVATION BOUNDARY
- INDIAN RESERVATION BOUNDARY

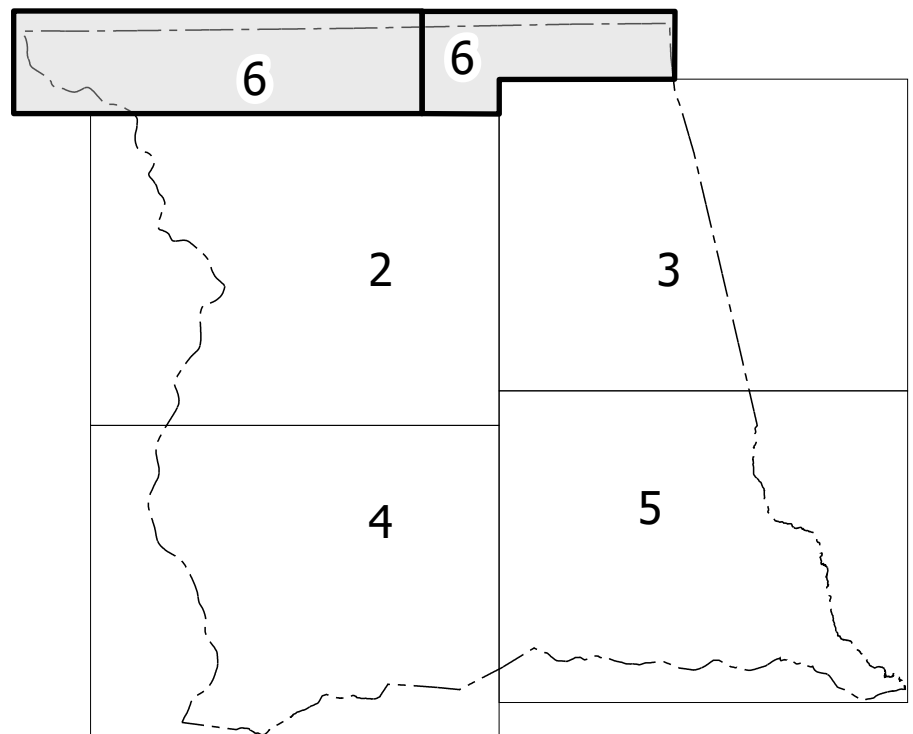
MONTGOMERY COUNTY
NORTH CAROLINA

PREPARED BY THE
NORTH CAROLINA DEPARTMENT OF TRANSPORTATION
OPERATIONS PROGRAM MANAGEMENT UNIT - MAPPING SECTION
IN COOPERATION WITH THE
U.S. DEPARTMENT OF TRANSPORTATION
FEDERAL HIGHWAY ADMINISTRATION

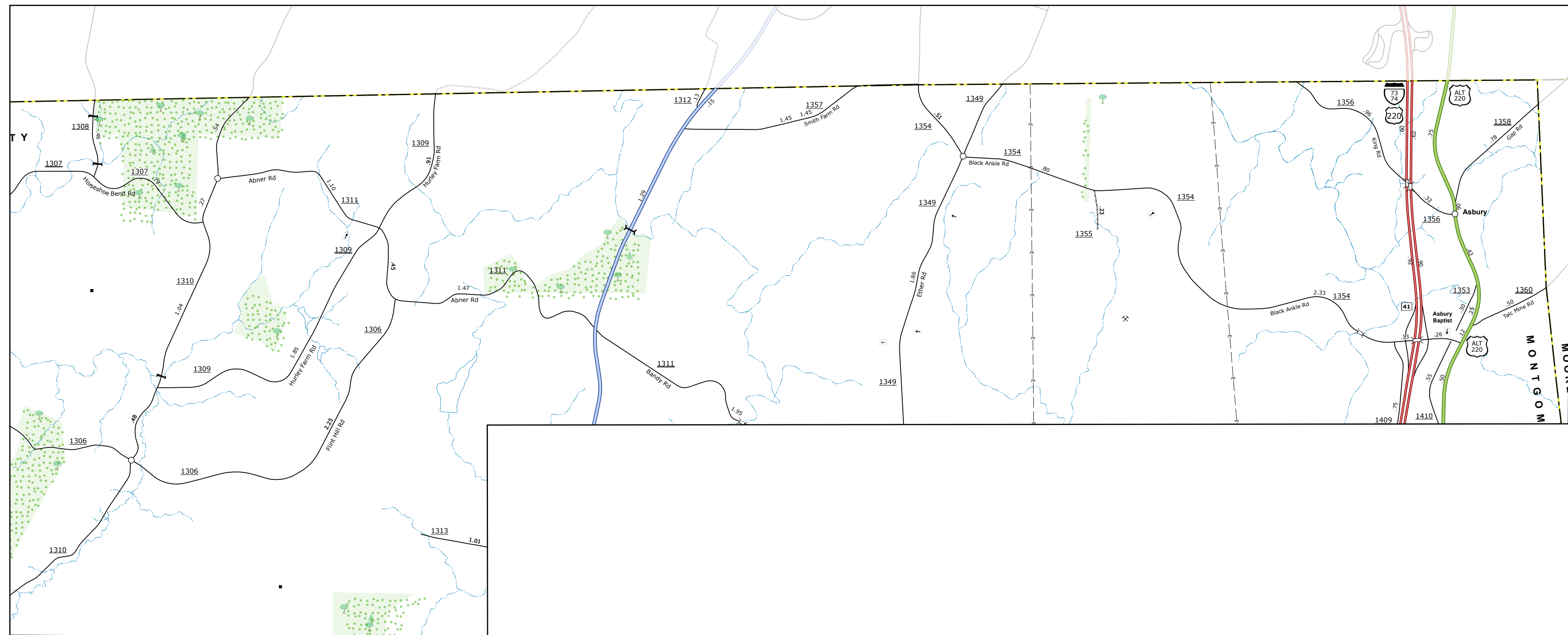
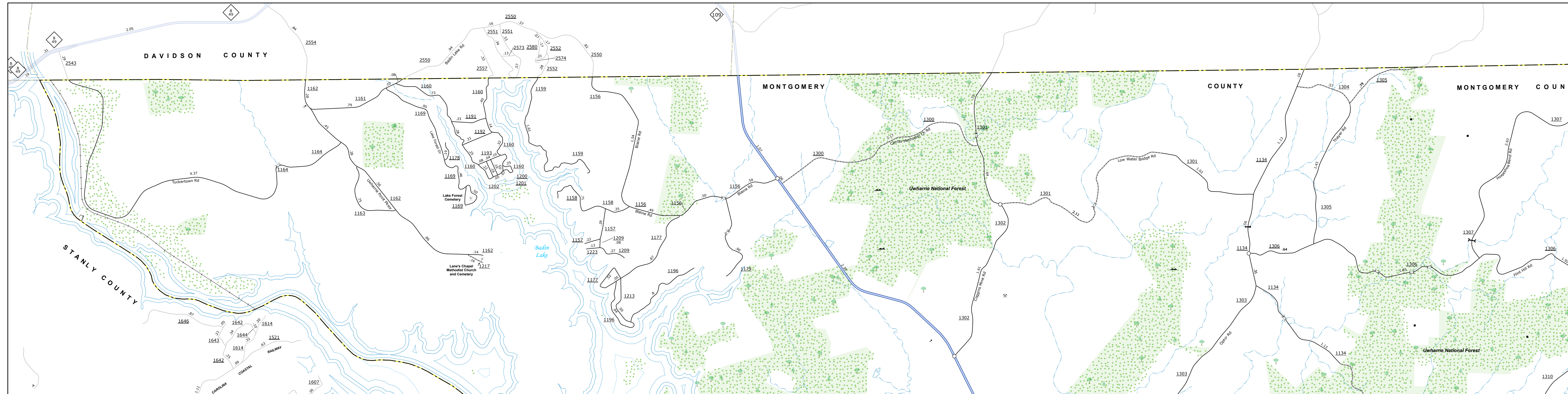
SCALE
0 1
MILES

NORTH CAROLINA PLANE COORDINATE SYSTEM
LAMBERT CONFORMAL CONIC PROJECTION

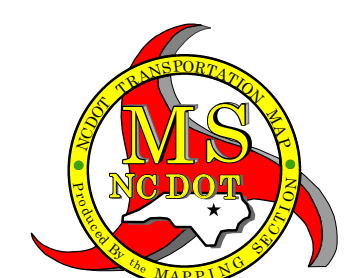
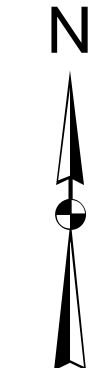
SHEET 2 of 6



THIS IS A PRELIMINARY MAP. THE MOUNTAIN STATE MAPS, INC. MAKES NO WARRANTY, REPRESENTATION OR GUARANTEE AS TO THE ACCURACY OF THE DATA OR THE INFORMATION CONTAINED HEREIN. THE DATA IS PROVIDED AS IS. THE USER ASSUMES ALL LIABILITY FOR ANY DAMAGE, INCLUDING REASONABLE ATTORNEY'S FEES, ARISING FROM THE USE OF THIS MAP. THE INFORMATION CONTAINED HEREIN IS NOT TO BE USED FOR ANY PURPOSE OTHER THAN THAT FOR WHICH IT WAS PROVIDED. THE INFORMATION CONTAINED HEREIN IS NOT TO BE USED FOR ANY PURPOSE OTHER THAN THAT FOR WHICH IT WAS PROVIDED.

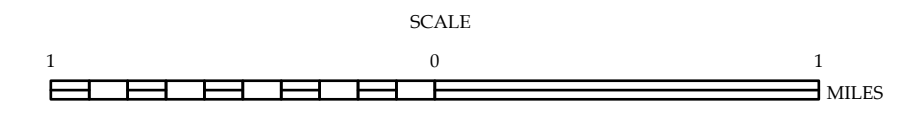


- LEGEND**
- INTERSTATE US NC
 - Divided Hwy
 - Undivided Hwy
 - BLUE RIDGE PARKWAY
 - UNPAVED SURFACED ROAD
 - HARD SURFACE ROAD
 - NON-SYSTEM ROAD
 - PROFESSIONALLY DRAWN ROAD
 - PROTECTED LOCATION
 - INTERSECTION DISTANCE
 - STANDARD ROAD BRIDGE
 - RAILROAD BRIDGE
 - DRAW SPAN ON BRIDGE
 - PEDESTRIAN BRIDGE
 - PEDESTRIAN WALKWAY
 - PEDESTRIAN UNDERPASS
 - VEHICULAR UNDERPASS
 - TUNNEL
 - CULVERT
 - PIPE
 - INTERSTATE HIGHWAY
 - U.S. NUMBERED HIGHWAY
 - S.C. NUMBERED HIGHWAY
 - S.C. NUMBERED BICYCLE ROUTE
 - S.C. NUMBERED BICYCLE ROUTE
 - INTERSTATE INTERCHANGE NUMBER
 - SECONDARY ROAD NUMBER
 - UTILITY LINE
 - RAILROAD LINE
 - RAILROAD STATION
 - INSET AREA
 - STATE LINE
 - COUNTY LINE
 - SMOOTHED URBAN BOUNDARIES
 - CITY LIMITS
 - FERRY ROUTE AND RAMP
 - NARROW CREEK OR STREAM
 - WIDE RIVER OR CREEK
 - RESERVOIR, POND OR LAKE W/ ISLAND
 - DAM OR DAM WITH LOCK
 - WATERFALL
 - SWAMP
 - COMMUNITY
 - COUNTY SEAT
 - SCHOOL
 - COLLEGE OR UNIVERSITY
 - HOSPITAL
 - COAST GUARD STATION
 - CHURCH
 - CHURCH WITH CEMETERY
 - CEMETERY
 - PATROL STATION
 - CORRECTION OR PENAL INSTITUTION
 - QUARRY
 - MINE OR PIT
 - HIGHWAY GARAGE OR MAINT. YARD
 - HIGHWAY BUS OR DIST. OFFICE
 - MILITARY POST
 - WEIGH STATION
 - FARM BOUNDS
 - HISTORICAL SITE
 - POINTS OF INTEREST
 - POST OFFICE
 - STATE FOREST
 - LIGHTHOUSE
 - MOUNTAIN SUMMIT
 - MOUNTAIN GAP
 - OVERLOOK
 - REST AREA
 - VISITOR CTR/REST AREA
 - WELCOME CTR/REST AREA
 - AIRPORT
 - MILITARY AIRPORT
 - NATIONAL / STATE FOREST BOUNDARY
 - WILDLIFE REFUGE
 - NATIONAL / STATE PARK BOUNDARY
 - GAME LANDS BOUNDARY
 - MILITARY RESERVATION BOUNDARY
 - INDIAN RESERVATION BOUNDARY



MONTGOMERY COUNTY NORTH CAROLINA

PREPARED BY THE
NORTH CAROLINA DEPARTMENT OF TRANSPORTATION
OPERATIONS PROGRAM MANAGEMENT UNIT - MAPPING SECTION
IN COOPERATION WITH THE
U.S. DEPARTMENT OF TRANSPORTATION
FEDERAL HIGHWAY ADMINISTRATION



NORTH CAROLINA PLANE COORDINATE SYSTEM
LAMBERT CONFORMAL CONIC PROJECTION

COPIES OF THIS MAP ARE AVAILABLE TO THE PUBLIC AT NOMINAL COST. CONTACT US TO ORDER: 1-800-368-3333