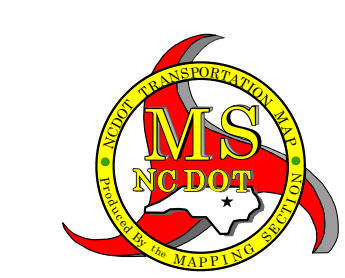
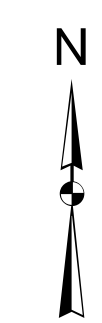
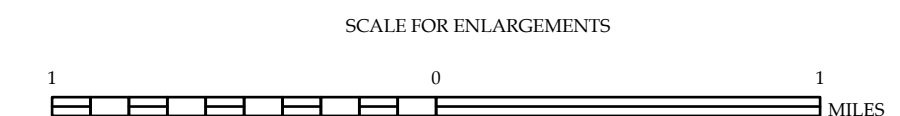
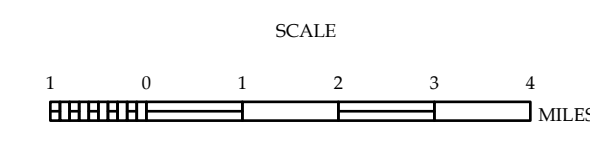


- LEGEND**
- INTERSTATE US NC
 - US NUMBERED HIGHWAY
 - N.C. NUMBERED HIGHWAY
 - U.S. NUMBERED BIWAYLE ROUTE
 - N.C. NUMBERED BIWAYLE ROUTE
 - INTERSTATE INTERCHANGE NUMBER
 - SECONDARY ROAD NUMBER
 - UTILITY LINES
 - RAILROAD LINE
 - RAILROAD STATION
 - INLET AREA
 - STEEL LINE
 - COUNTY LINE
 - MUNICIPALITY BOUNDARIES
 - CITY LIMITS
 - FERRY ROUTE AND RAMP
 - NARROW STRIP OR STREAM
 - WIDE RIVER OR CREEK
 - BEACHFRONT POND OR LAKE W/ BEACH
 - DAM OR DAM WITH LOCK
 - WATERFALL
 - SWAMP
 - COMMUNITY
 - COUNTY SEAP
 - SCHOOL
 - COLLER OR UNIVERSITY
 - HOSPITAL
 - COAST GUARD STATION
 - CHURCH
 - CHURCH WITH CEMETERY
 - CEMETERY
 - PUBLIC STATION
 - CORRECTION OR PENAL INSTITUTION
 - QUARRY
 - MINE OR PIT
 - BRIGHT GARAGE OR MAINT. YARD
 - BRIGHTWAY DRY OR DRY OFFICE
 - MILITARY POST
 - WEIGH STATION
 - FARMER'S STORE
 - HISTORICAL SITE
 - PORE OF FOREST
 - POST OFFICE
 - STATE FOREST
 - INDUSTRIAL
 - INDUSTRIAL SUBURB
 - INDUSTRIAL ZONE
 - OVERLOOK
 - BEST AREA
 - VISITOR CENTER AREA
 - WELLHEAD CENTER AREA
 - ADRIUM
 - MILITARY AIRPORT
 - NATIONAL STATE FOREST BOUNDARY
 - WILDLIFE REFUGE
 - NATIONAL STATE PARK BOUNDARY
 - GAME LANDS BOUNDARY
 - MILITARY RESERVATION BOUNDARY
 - INDIAN RESERVATION BOUNDARY



MITCHELL COUNTY NORTH CAROLINA

PREPARED BY THE NORTH CAROLINA DEPARTMENT OF TRANSPORTATION OPERATIONS PROGRAM MANAGEMENT UNIT - MAPPING SECTION IN COOPERATION WITH THE U.S. DEPARTMENT OF TRANSPORTATION FEDERAL HIGHWAY ADMINISTRATION



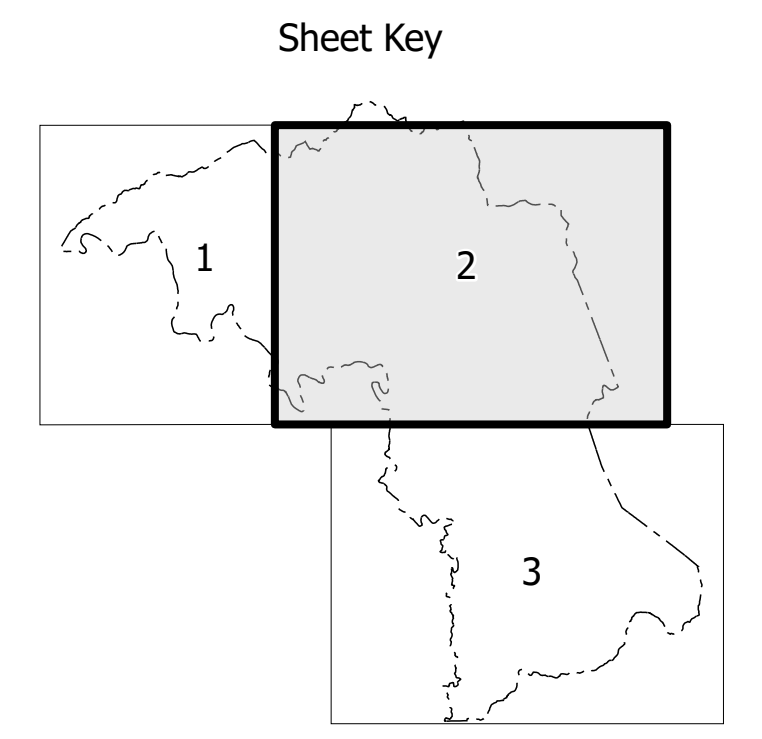
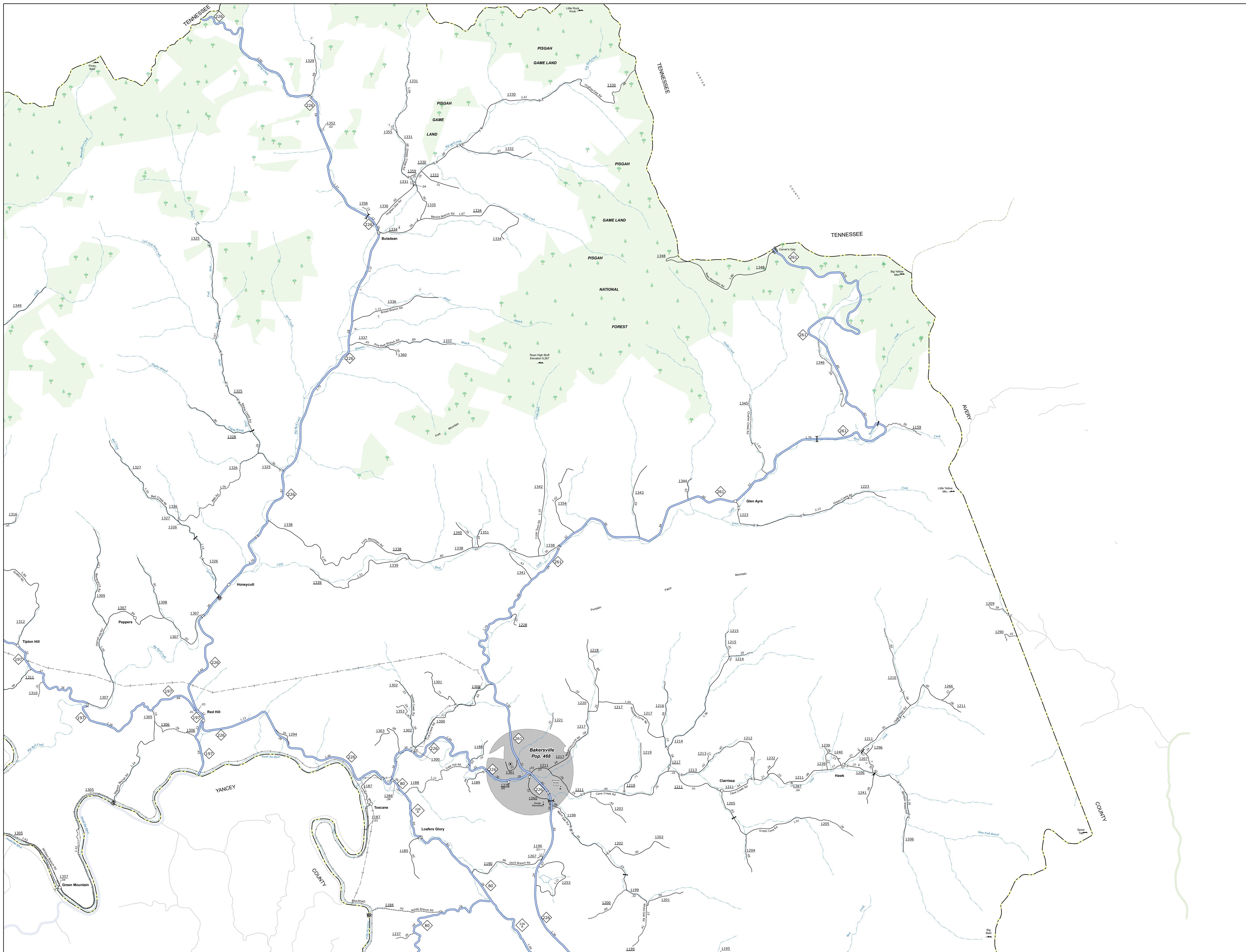
COPIES OF THIS MAP ARE AVAILABLE TO THE PUBLIC AT NOMINAL COST. CONTACT US TO ORDER: maps@ncdot.gov <https://connect.ncdot.gov/resources/State-Mapping/Pages/Ordering-Maps.aspx> (919) 834-8480

TERMS OF USE: The Mapping Section's goal is to provide the most accurate and current information possible. Map data is compiled from numerous sources with varying dates of publication and map accuracy standards. As a result, the accuracy, currency, and completeness of the data provided will vary. The North Carolina Department of Transportation shall not be held liable for any errors in the map data. This map cannot be construed to be a legal document. The information shown on this map was last updated in July 2024. For digital copies of this map or additional map products, visit <https://connect.ncdot.gov/resources/State-Mapping>

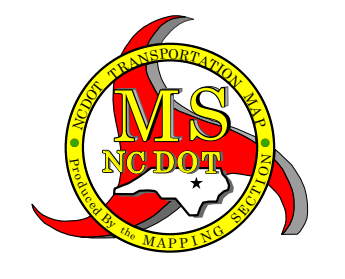
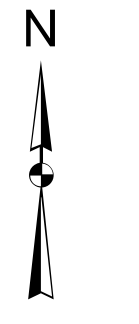
NORTH CAROLINA PLANE COORDINATE SYSTEM LAMBERT CONFORMAL CONIC PROJECTION

TERMS OF USE: The Mapping Section's goal is to provide the most accurate and current information possible. Map data is compiled from various sources and is not guaranteed to be 100% accurate. The user assumes all responsibility for any errors or omissions. The user agrees to indemnify and hold the State of North Carolina harmless from and against all claims, damages, and expenses, including reasonable attorneys' fees, arising from the use of this map. For additional information, please contact the Mapping Section at 919.737.2320.

COPIES OF THIS MAP ARE AVAILABLE TO THE PUBLIC BY REQUEST. CONTACT US TO ORDER: PUBLIC INFORMATION DIVISION, 100 EAST 19TH AVENUE, RALEIGH, NC 27601. PHONE: 919.737.2320.

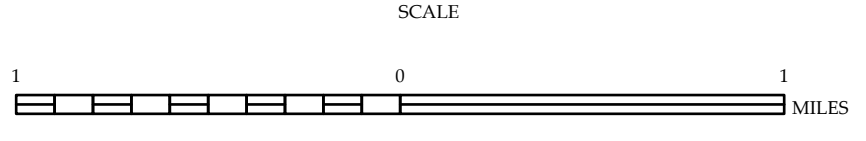


- LEGEND**
- INTERSTATE HWY (US, NC) / Divided Hwy / Undivided Hwy
 - BLU BRIDGE PASSWAY
 - UNPAVED SURFACED ROAD
 - HARD SURFACED ROAD
 - ROAD UNDER CONSTRUCTION
 - PROPOSED/PLANNED ROAD
 - PROJECT TRACK/LOCK
 - INTERSECTION DISTANCE
 - STANDARD ROAD BRIDGE
 - RAILROAD BRIDGE
 - BRASS SPAC ON BRIDGE
 - PIEDMONT BRIDGE
 - PIEDMONT WALKWAY
 - PIEDMONT UNDERPASS
 - VEHICULAR UNDERPASS
 - TUNNEL
 - CULVERT
 - PIH
 - INTERSTATE HIGHWAY (U.S. NUMBERED HIGHWAY, N.C. NUMBERED HIGHWAY, U.S. NUMBERED BICYCLE ROUTE, N.C. NUMBERED BICYCLE ROUTE)
 - INTERSTATE INTERCHANGE NUMBER
 - SECONDARY ROAD NUMBER
 - TRUCK STOP
 - TRUCK TRAIL
 - RAILROAD LINE
 - RAILROAD STATION
 - PORT AREA
 - COUNTY LINE
 - STATE LINE
 - UNINCORPORATED URBAN BOUNDARIES
 - CITY LIMITS
 - FERRY ROUTE AND RAMP
 - NARROW CREEK OR STREAM
 - SIDE BY SIDE CREEK
 - RESERVOIR, POND OR LAKE W/ ISLAND
 - DAM OR DAM WITH LOCK
 - WATERFALL
 - SWAMP
 - COMMUNITY
 - CITY SEAT
 - SCHOOL
 - COLLEGE OR UNIVERSITY
 - HOSPITAL
 - STATE GOVERNMENT
 - CHURCH
 - CHURCH WITH CEMETERY
 - CEMETERY
 - PARK STATION
 - CORRECTION OR PENAL INSTITUTION
 - QUARRY
 - SEWER OR RIT
 - HIGHWAY GARAGE OR MAINT. YARD
 - HIGHWAY DIV. OR DIST. OFFICE
 - MILITARY POST
 - WEIGH STATION
 - FARMS/BOARDS
 - HISTORICAL SITE
 - PUNYA OR INTEREST
 - POST OFFICE
 - STATE FOREST
 - LOG CABIN
 - SOON TO BE SUMMIT
 - MONTHLY GARDEN
 - OVERLOOK
 - REST AREA
 - TRUCK OR TRUCK AREA
 - WELCH CTR REST AREA
 - SEWER
 - MILITARY AIRPORT
 - NATIONAL / STATE FOREST BOUNDARY
 - WILDLIFE REFUGE
 - NATIONAL / STATE PARK BOUNDARY
 - GAME LANDS BOUNDARY
 - MILITARY RESERVATION BOUNDARY
 - INDIAN RESERVATION BOUNDARY



**MITCHELL COUNTY
NORTH CAROLINA**

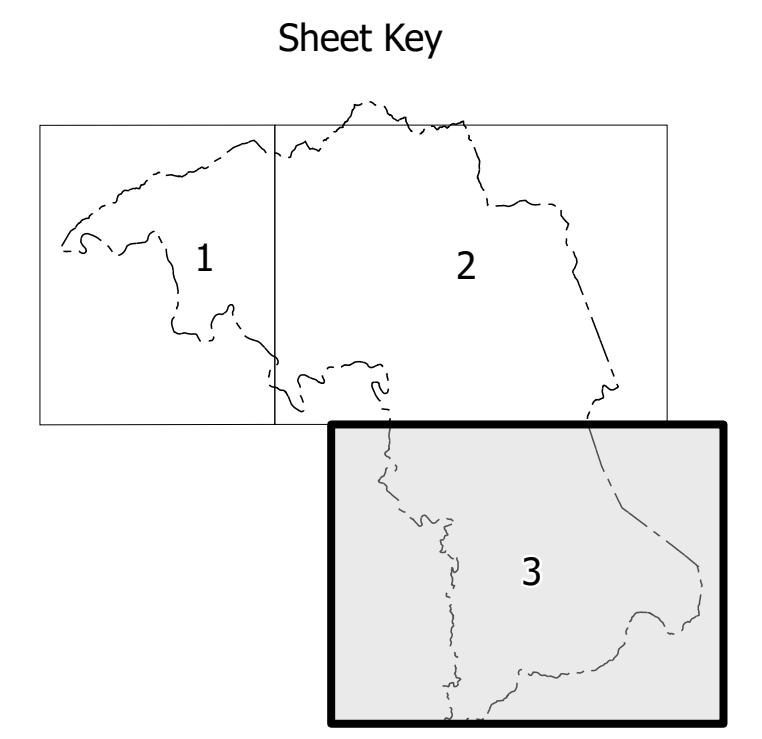
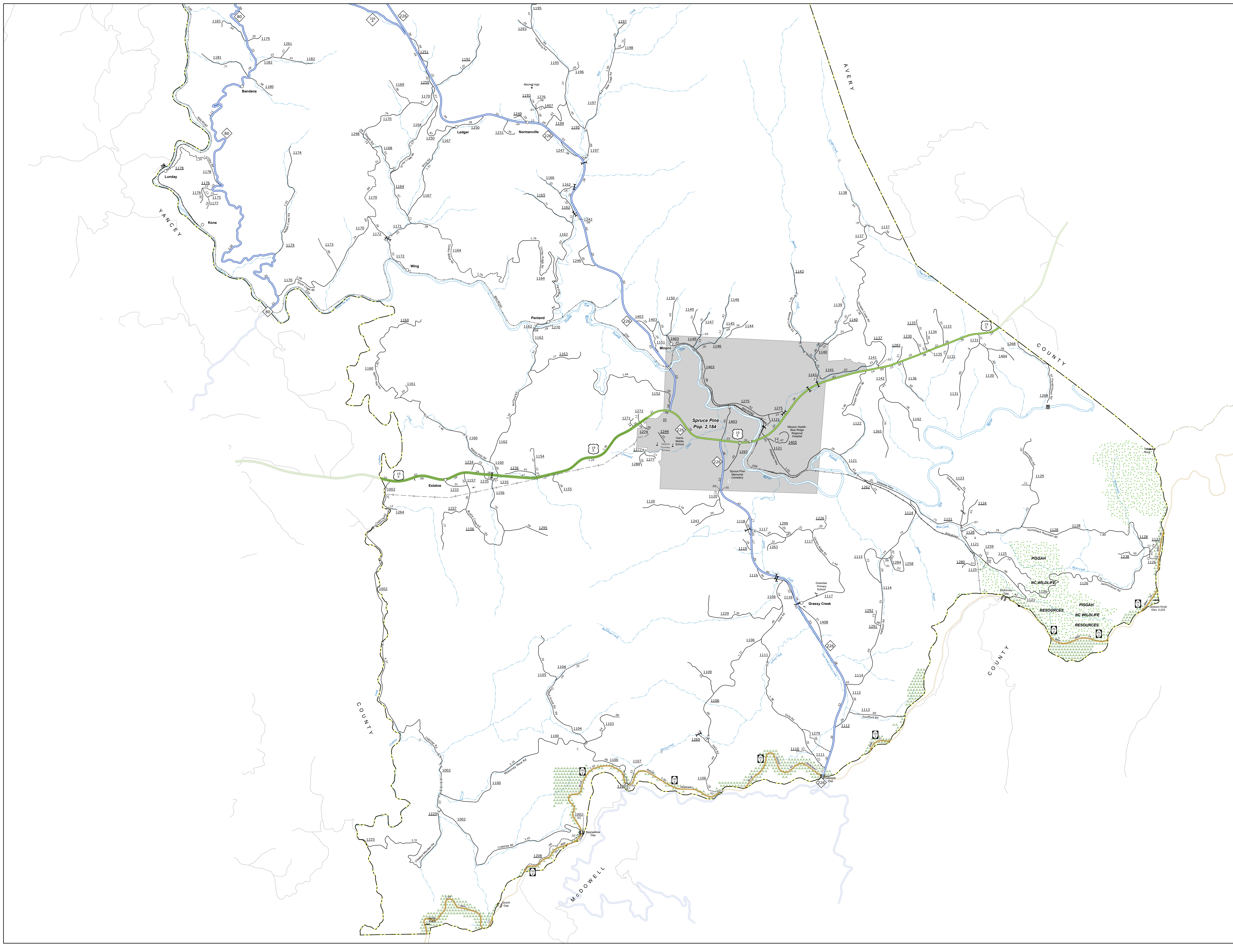
PREPARED BY THE
NORTH CAROLINA DEPARTMENT OF TRANSPORTATION
OPERATIONS PROGRAM MANAGEMENT UNIT - MAPPING SECTION
IN COOPERATION WITH THE
U.S. DEPARTMENT OF TRANSPORTATION
FEDERAL HIGHWAY ADMINISTRATION



NORTH CAROLINA PLANE COORDINATE SYSTEM
LAMBERT CONFORMAL CONIC PROJECTION

TERMS OF USE: The Mapping Section's goal is to provide the most accurate and current information possible. Map data is compiled from various sources and is not guaranteed to be 100% accurate. The user assumes all responsibility for any errors or omissions. The user agrees to indemnify and hold the State of North Carolina harmless from any and all claims, damages, and expenses, including reasonable attorneys' fees, arising out of or from the use of this map.

COPIES OF THIS MAP ARE AVAILABLE TO THE PUBLIC BY CONTACTING US TO ORDER. CONTACT INFORMATION: 1000 EAST MAIN STREET, SUITE 200, SPRUCE PINE, NC 28769. PHONE: 828.288.2222. FAX: 828.288.2223. WWW.MITCHELLCOUNTYNC.GOV

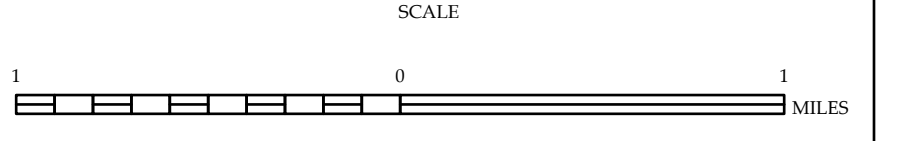


- LEGEND**
- INTERSTATE HIGHWAY (US, NC) [Symbol]
 - BLUES RIDGE PARKWAY [Symbol]
 - UNPAVED SURFACED ROAD [Symbol]
 - HARD SURFACED ROAD [Symbol]
 - ROAD UNDER CONSTRUCTION [Symbol]
 - PROPOSED SURFACED ROAD [Symbol]
 - PROJECT TRACKS [Symbol]
 - INTERSECTION DISTANCE [Symbol]
 - STANDARD ROAD BRIDGE [Symbol]
 - RAILROAD BRIDGE [Symbol]
 - DRY SPAN ON BRIDGE [Symbol]
 - FURROW BRIDGE [Symbol]
 - PIEDMONT UNDERPASS [Symbol]
 - VARIABLE UNDERPASS [Symbol]
 - TUNNEL [Symbol]
 - CULVERT [Symbol]
 - PIE [Symbol]
 - INTERSTATE HIGHWAY [Symbol]
 - U.S. NUMBERED HIGHWAY [Symbol]
 - N.C. NUMBERED HIGHWAY [Symbol]
 - U.S. NUMBERED BI-CYCLE ROUTE [Symbol]
 - N.C. NUMBERED BI-CYCLE ROUTE [Symbol]
 - INTERSTATE INTERCHANGE NUMBER [Symbol]
 - SECONDARY ROAD NUMBER [Symbol]
 - TRUCK STOP [Symbol]
 - RAILROAD LINE [Symbol]
 - RAILROAD STATION [Symbol]
 - PORT AREA [Symbol]
 - STATE LINE [Symbol]
 - COUNTY BOUNDARIES [Symbol]
 - UNINCORPORATED URBAN BOUNDARIES [Symbol]
 - CITY LIMITS [Symbol]
 - FERRY ROUTE AND RAMP [Symbol]
 - NARROW CREEK OR STREAM [Symbol]
 - RIDGE, HILLS, OR CREEK [Symbol]
 - RESERVOIR, POND, OR LAKE W/ ISLAND [Symbol]
 - DAM OR DAM WITH LOCK [Symbol]
 - WATERFALL [Symbol]
 - SWAMP [Symbol]
 - COMMUNITY [Symbol]
 - CITY SEAT [Symbol]
 - SCHOOL [Symbol]
 - COLLEGE OR UNIVERSITY [Symbol]
 - HOSPITAL [Symbol]
 - STANDARD STATION [Symbol]
 - CHURCH [Symbol]
 - CHEMISTS CEMETERY [Symbol]
 - CEMETERY [Symbol]
 - PARK STATION [Symbol]
 - CORRECTION OR PENAL INSTITUTION [Symbol]
 - QUARRY [Symbol]
 - SILO OR PIT [Symbol]
 - HIGHWAY DIV. OR DIST. OFFICE [Symbol]
 - MILITARY POST [Symbol]
 - WEIGHT STATION [Symbol]
 - BARBECUES [Symbol]
 - HISTORICAL SITE [Symbol]
 - POND OR INTEREST [Symbol]
 - POST OFFICE [Symbol]
 - STATE FOREST [Symbol]
 - LOG CABIN [Symbol]
 - MONUMENT SUMMIT [Symbol]
 - MONUMENT [Symbol]
 - OVERLOOK [Symbol]
 - REST AREA [Symbol]
 - TRUCK REST AREA [Symbol]
 - WELCH REST AREA [Symbol]
 - SHRINE [Symbol]
 - MILITARY AIRPORT [Symbol]
 - NATIONAL / STATE FOREST BOUNDARY [Symbol]
 - WILDLIFE REFUGE [Symbol]
 - NATIONAL / STATE PARK BOUNDARY [Symbol]
 - GAME LANDS BOUNDARY [Symbol]
 - MILITARY RESERVATION BOUNDARY [Symbol]
 - INDIAN RESERVATION BOUNDARY [Symbol]



**MITCHELL COUNTY
NORTH CAROLINA**

PREPARED BY THE
NORTH CAROLINA DEPARTMENT OF TRANSPORTATION
OPERATIONS PROGRAM MANAGEMENT UNIT - MAPPING SECTION
IN COOPERATION WITH THE
U.S. DEPARTMENT OF TRANSPORTATION
FEDERAL HIGHWAY ADMINISTRATION



NORTH CAROLINA PLANE COORDINATE SYSTEM
LAMBERT CONFORMAL CONIC PROJECTION