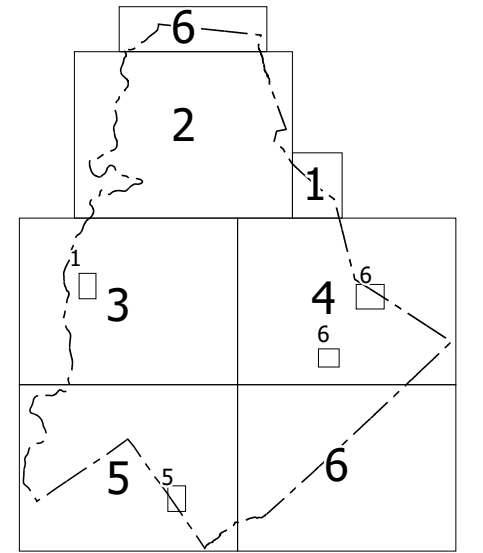


TERMS OF USE: The Mapping Section's goal is to provide the most accurate and current information possible. Map data is compiled from the data provided and used by the North Carolina Department of Transportation and is not to be used for any other purpose. This map is for informational purposes only. For original content of this map or additional map products, visit <http://www.ncdot.gov/MapProducts/MapProducts.aspx>.

COPYIES OF THIS MAP ARE AVAILABLE TO THE PUBLIC AT THE OFFICE OF THE COUNTY ENGINEER, 1000 EAST 7TH STREET, CHARLOTTE, NC 28202. CONTACT: 704.366.5300.

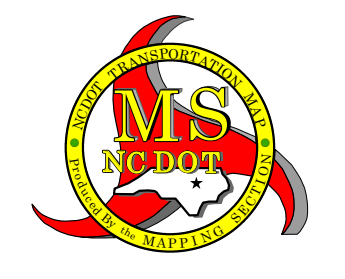
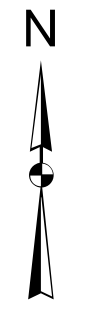


Sheet Key



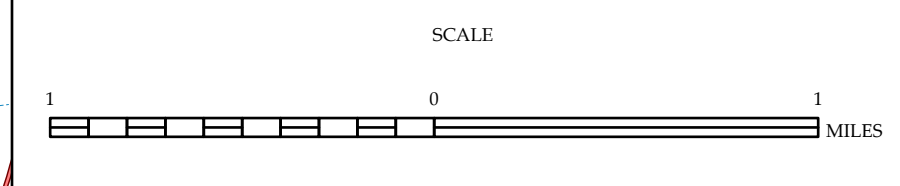
LEGEND

- INTERSTATE US NC
- US NUMBERED HIGHWAY
- NC NUMBERED HIGHWAY
- NC NUMBERED BI-CYCLE ROUTE
- INTERSTATE INTERCHANGE NUMBER
- SECONDARY ROAD NUMBER
- LIBRARY
- RAILROAD LINE
- RAILROAD STATION
- POST OFFICE
- STATE LINE
- COUNTY LINE
- UNINCORPORATED TOWN BOUNDARIES
- CITY LIMITS
- WATERWAY
- WIDE RIVER OR CREEK
- RESERVOIR, POND OR LAKE WITH ISLAND
- DAM OR DAM WITH LOCK
- WATERFALL
- SHRUB
- COMBENITY
- COUNTY SEAT
- CITY
- COLLEGE OR UNIVERSITY
- HOSPITAL
- COAST GUARD STATION
- CERCH
- CERCH WITH CEMETERY
- CEMETERY
- POSS. STATION
- CORRECTION OR PENAL INSTITUTION
- GEAR
- WENT OR FTE
- BIOPHY WARE OR MANT. YARD
- HIGHWAY DIV. OR DIST. OFFICE
- MILITARY POST
- WATER STATION
- FABRICATIONS
- RESERVOIR SITE
- POINTS OF INTEREST
- POST OFFICE
- STATE FOREST
- LIGHTHOUSE
- MOUNTAIN SUMMIT
- UNINCORPORATED TOWN BOUNDARIES
- REST AREA
- WELCOME TO REST AREA
- AIRPORT
- MILITARY AIRPORT
- NATIONAL STATE FOREST BOUNDARY
- WILDLIFE REFUGE
- NATIONAL STATE PARK BOUNDARY
- GAME LANDS BOUNDARY
- MILITARY RESERVATION BOUNDARY
- DISARM RESERVATION BOUNDARY



MECKLENBURG COUNTY
NORTH CAROLINA

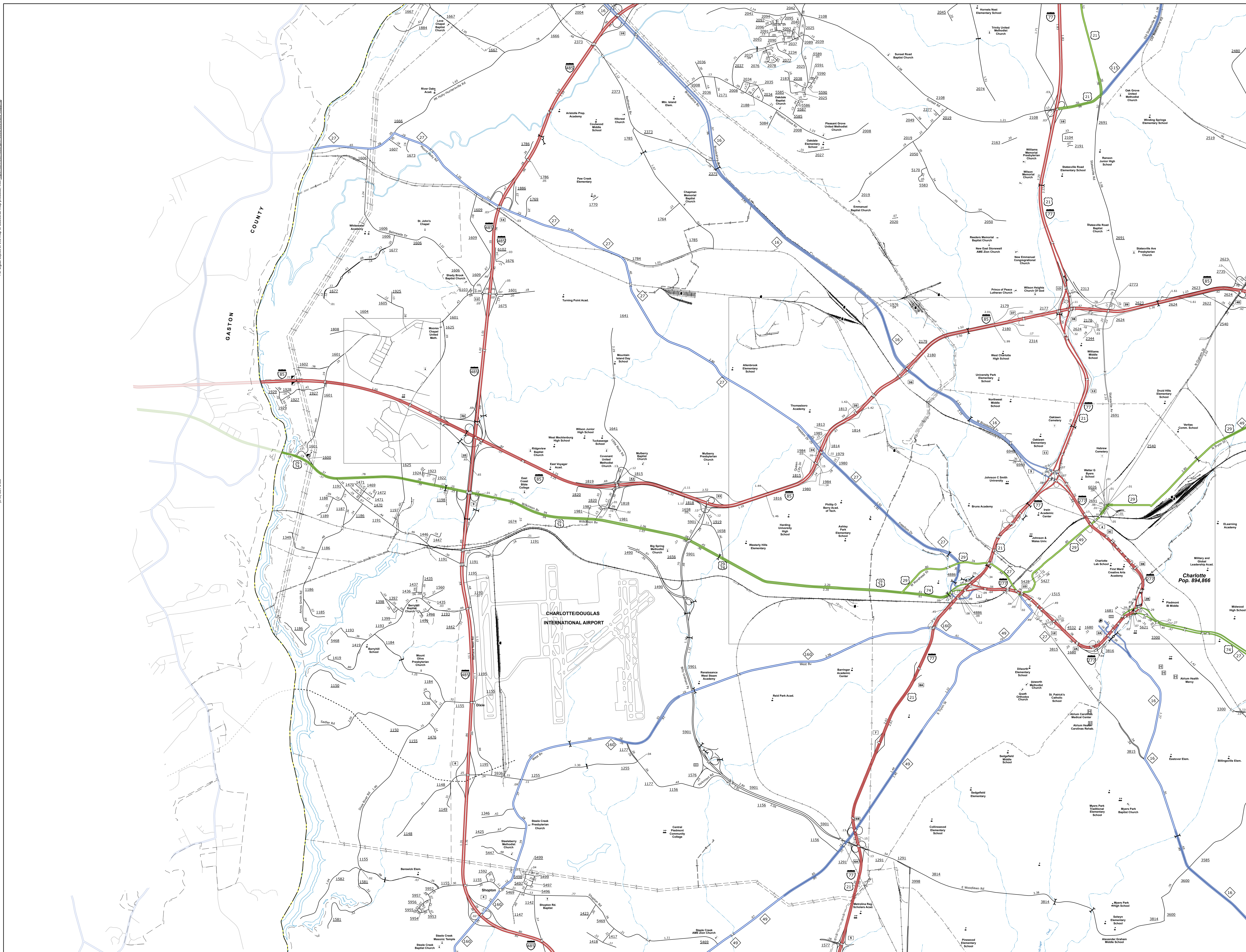
PREPARED BY THE
NORTH CAROLINA DEPARTMENT OF TRANSPORTATION
OPERATIONS PROGRAM MANAGEMENT UNIT - MAPPING SECTION
IN COOPERATION WITH THE
U.S. DEPARTMENT OF TRANSPORTATION
FEDERAL HIGHWAY ADMINISTRATION



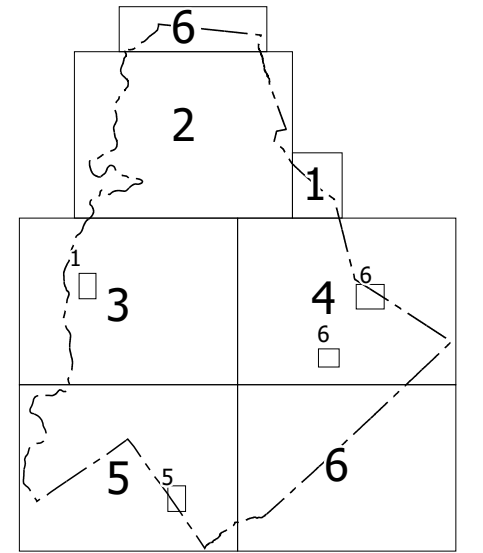
NORTH CAROLINA PLANE COORDINATE SYSTEM
LAMBERT CONFORMAL CONIC PROJECTION

TERMS OF USE: This Mapping Section's goal is to provide the most accurate and current information possible. Map data is compiled from the data provided by the North Carolina Department of Transportation and other sources. The North Carolina Department of Transportation does not have liability for any errors in the map data. This information is provided for informational purposes only. For original copies of this map or additional map products, visit <http://www.ncdot.gov/MapProducts/MapProducts.aspx>.

COPYIES OF THIS MAP ARE AVAILABLE TO THE PUBLIC AT THE OFFICE OF THE COUNTY ENGINEER, 100 SOUTH MAIN STREET, CHARLOTTE, NC 28202. CONTACT US AT 704.376.2000.

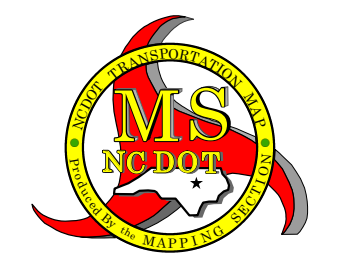
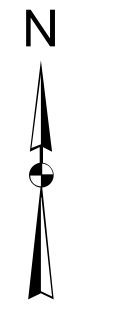


Sheet Key



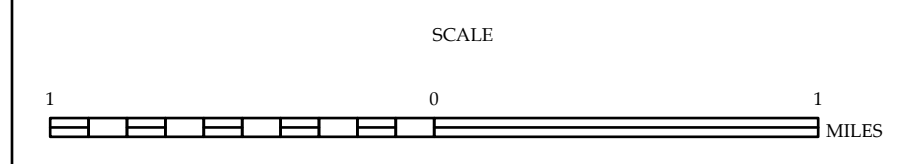
LEGEND

- INTERSTATE US NC
- US NUMBERED HIGHWAY
- NC NUMBERED HIGHWAY
- NC NUMBERED BI-CYCLE ROUTE
- INTERSTATE INTERCHANGE NUMBER
- SECONDARY ROAD NUMBER
- LIBRARY
- LIBRARY BRANCH
- RAILROAD LINE
- RAILROAD STATION
- POST OFFICE
- STATE LINE
- COUNTY LINE
- UNINCORPORATED TOWN BOUNDARIES
- CITY LIMITS
- ERRY ROUTE AND RAMP
- BARBER CREEK OR STREAM
- WIDE RIVER OR CREEK
- RESERVOIR, POND OR LAKE W/ ISLAND
- DAM OR DAM WITH LOCK
- WATERFALL
- SHOAR
- COMBENITY
- COUNTY SEAT
- COLLEGE OR UNIVERSITY
- HOSPITAL
- COAST GUARD STATION
- CEREBE
- CEREBE WITH CEMETERY
- CEMETERY
- POWERS STATION
- CORRECTION OR PENAL INSTITUTION
- GAZARD
- REST OR PTE
- HIGHWAY GARAGE OR MAINT. YARD
- HIGHWAY DIV. OR DIST. OFFICE
- MILITARY POST
- RAILROAD STATION
- FABRICATIONS
- RESERVOIR SITE
- POINTS OF INTEREST
- POST OFFICE
- STATE FOREST
- LIQUOR STORE
- MOUNTAIN SUMMIT
- MOUNTAIN GAP
- OVERLOOKING
- REST AREA
- UNIFORM TRAFFIC AREA
- WELCOME TO REST AREA
- AIRPORT
- MILITARY AIRPORT
- NATIONAL STATE FOREST BOUNDARY
- WILDLIFE REFUGE
- NATIONAL STATE PARK BOUNDARY
- GAME LANDS BOUNDARY
- MILITARY RESERVATION BOUNDARY
- DISTRICT RESERVATION BOUNDARY



MECKLENBURG COUNTY
NORTH CAROLINA

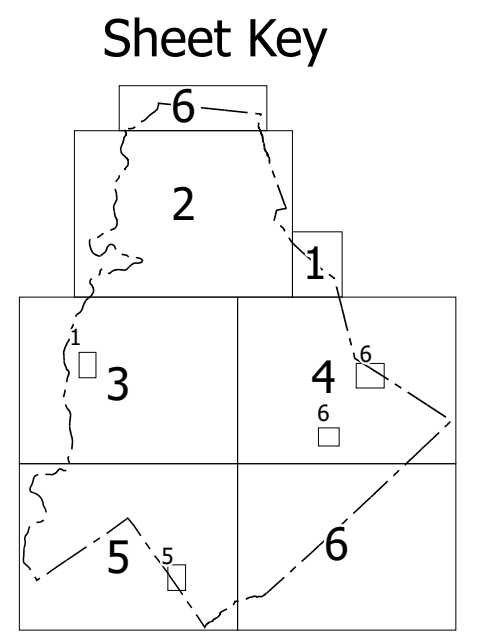
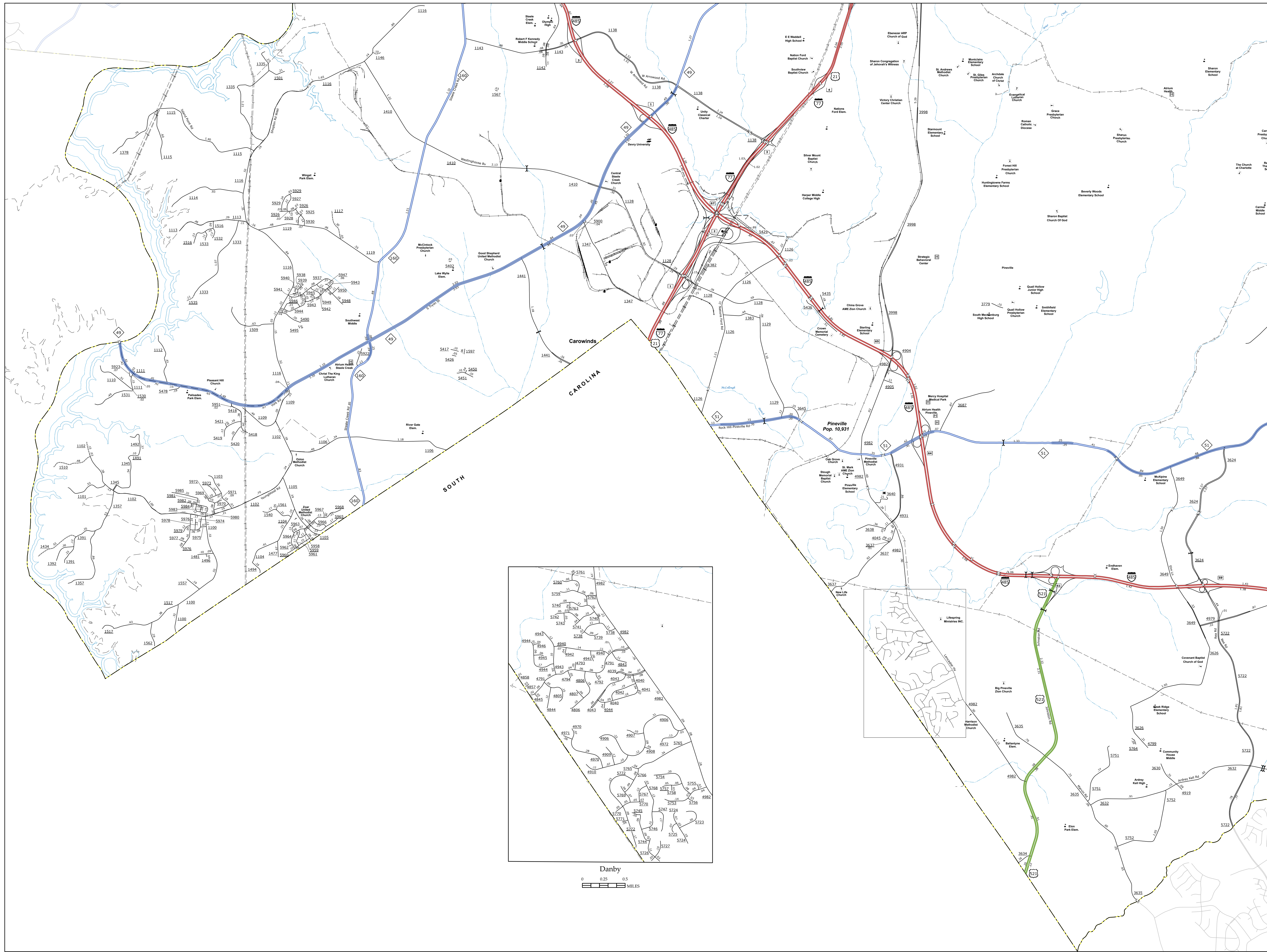
PREPARED BY THE
NORTH CAROLINA DEPARTMENT OF TRANSPORTATION
OPERATIONS PROGRAM MANAGEMENT UNIT - MAPPING SECTION
IN COOPERATION WITH THE
U.S. DEPARTMENT OF TRANSPORTATION
FEDERAL HIGHWAY ADMINISTRATION



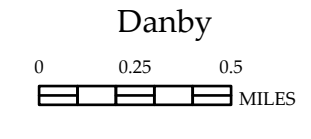
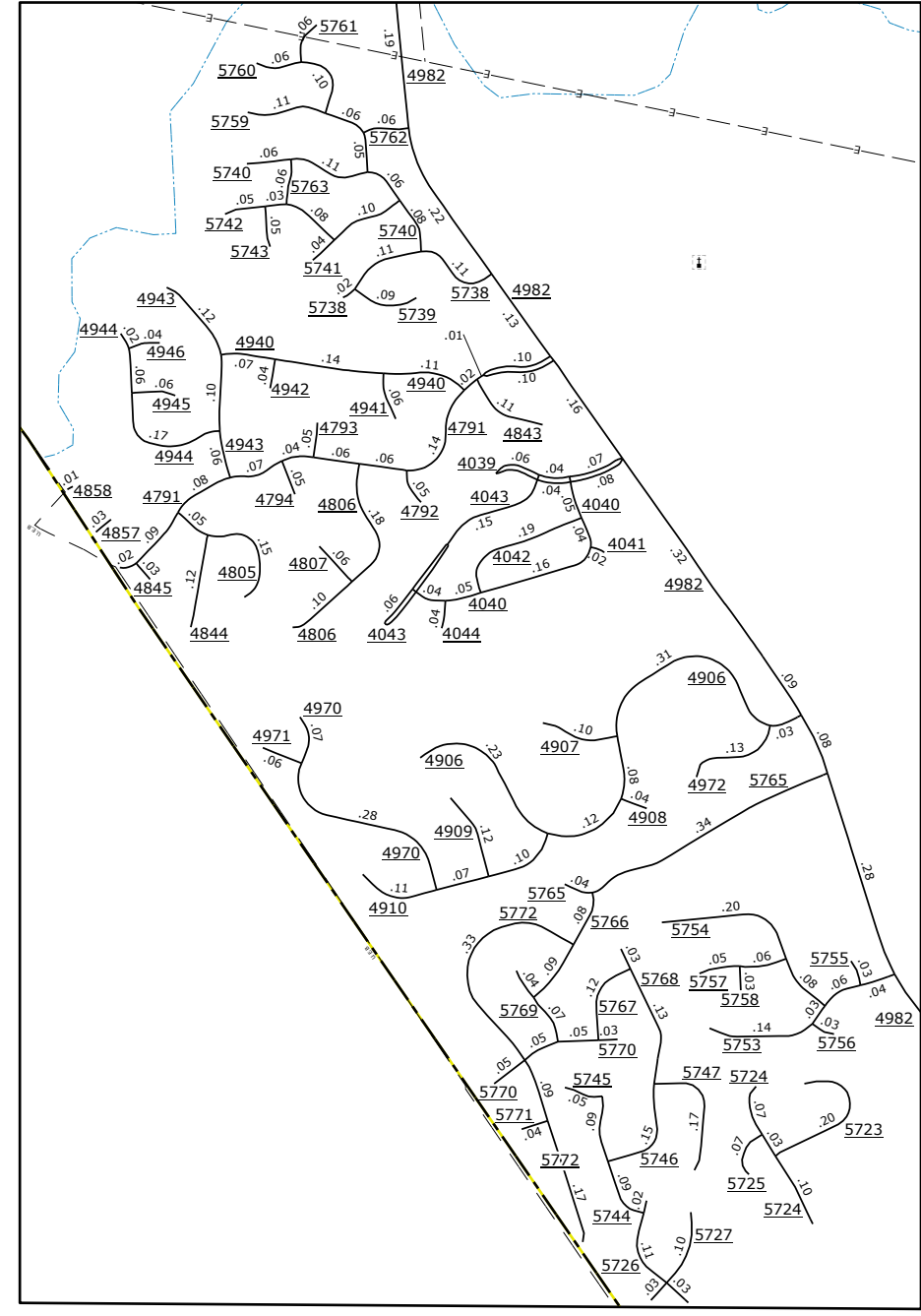
NORTH CAROLINA PLANE COORDINATE SYSTEM
LAMBERT CONFORMAL CONIC PROJECTION

TERMS OF USE: The Mapping Section's goal is to provide the most accurate and current information possible. Map data is compiled from the data provided by the North Carolina Department of Transportation and other sources. The user assumes all liability for any errors in the map data. This map is not intended to be used for any other purpose than the one for which it was prepared. For original copies of this map or additional map products, visit www.ncdot.gov.

COPIES OF THIS MAP ARE AVAILABLE TO THE PUBLIC AT THE CONTACT US FOR MORE INFORMATION. www.ncdot.gov

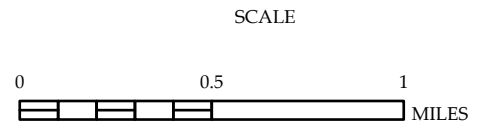


- LEGEND**
- INTERSTATE US NC Divided Hwy Undivided Hwy
 - HEAVY TRUCK PARKWAY
 - UNPAVED ROAD TO BE PAVED
 - HARD TO REPAIR ROAD
 - UNPAVED ROAD TO BE PAVED
 - PROPOSEDLY OPEN ROAD
 - PREDICTED OPEN ROAD
 - INTERSTATE DISTANCE
 - STANDARD ROAD BRIDGE
 - RAILROAD BRIDGE
 - DRAY SPAN OR BRIDGE
 - PEDESTRIAN BRIDGE
 - PEDESTRIAN WALKWAY
 - PEDESTRIAN UNDERPASS
 - VEHICLE UNDERPASS
 - TUNNEL
 - CULVERT
 - PIVOT
 - INTERSTATE HIGHWAY
 - US NUMBERED HIGHWAY
 - NC NUMBERED HIGHWAY
 - US NUMBERED BI-CYCLE ROUTE
 - NC NUMBERED BI-CYCLE ROUTE
 - INTERSTATE INTERCHANGE NUMBER
 - SECONDARY ROAD NUMBER
 - UTILITY LINE
 - RAILROAD LINE
 - RAILROAD STATION
 - POST OFFICE
 - STATE LINE
 - COUNTY LINE
 - SMOOTHED BOUNDARIES
 - CITY LINE
 - FERRY ROUTE AND RAMP
 - SANDWICH CREEK OR STREAM
 - WATER RESERVOIR
 - RESERVOIR, POND OR LAKE W/ ISLAND
 - DAM OR DAM WITH LOCK
 - WATERFALL
 - SWAMP
 - COMMUNITY
 - COUNTY SEAT
 - SCHOOL
 - COLLEGE OR UNIVERSITY
 - HOSPITAL
 - COAST GUARD STATION
 - CHURCH
 - CHURCH WITH CEASETRY
 - PARK STATION
 - CORRECTION OR PENAL INSTITUTION
 - QUARTERS
 - SEMI-OR PIT
 - INDUSTRIAL GARAGE OR MAINY YARD
 - HIGHWAY DIV. OR DIST. OFFICE
 - MILEAGE POST
 - WRECK STATION
 - FARROWING
 - HISTORICAL SITE
 - POINTS OF INTEREST
 - PARK
 - STATE FOREST
 - LIGHTHOUSE
 - MOUNTAIN SUMMIT
 - MOUNTAIN GAP
 - OVERLOOK
 - REST AREA
 - VISITOR CENTER AREA
 - WELCOME CENTER AREA
 - AMPHI
 - MILITARY AIRPORT
 - NATIONAL STATE FOREST BOUNDARY
 - WILDLIFE REFUGE
 - NATIONAL STATE PARK BOUNDARY
 - GAME LANDS BOUNDARY
 - MILITARY RESERVATION BOUNDARY
 - INDIAN RESERVATION BOUNDARY



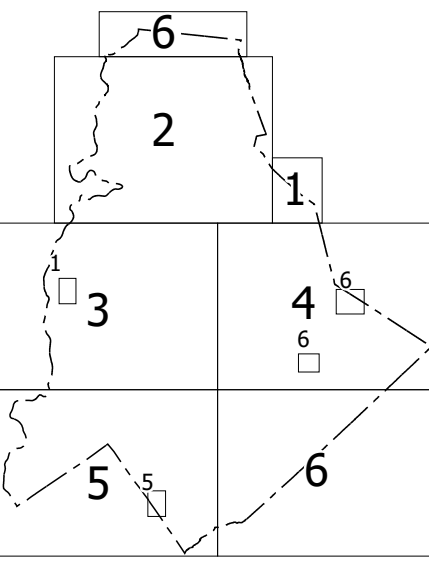
**MECKLENBURG COUNTY
NORTH CAROLINA**

PREPARED BY THE
NORTH CAROLINA DEPARTMENT OF TRANSPORTATION
OPERATIONS PROGRAM MANAGEMENT UNIT - MAPPING SECTION
IN COOPERATION WITH THE
U.S. DEPARTMENT OF TRANSPORTATION
FEDERAL HIGHWAY ADMINISTRATION



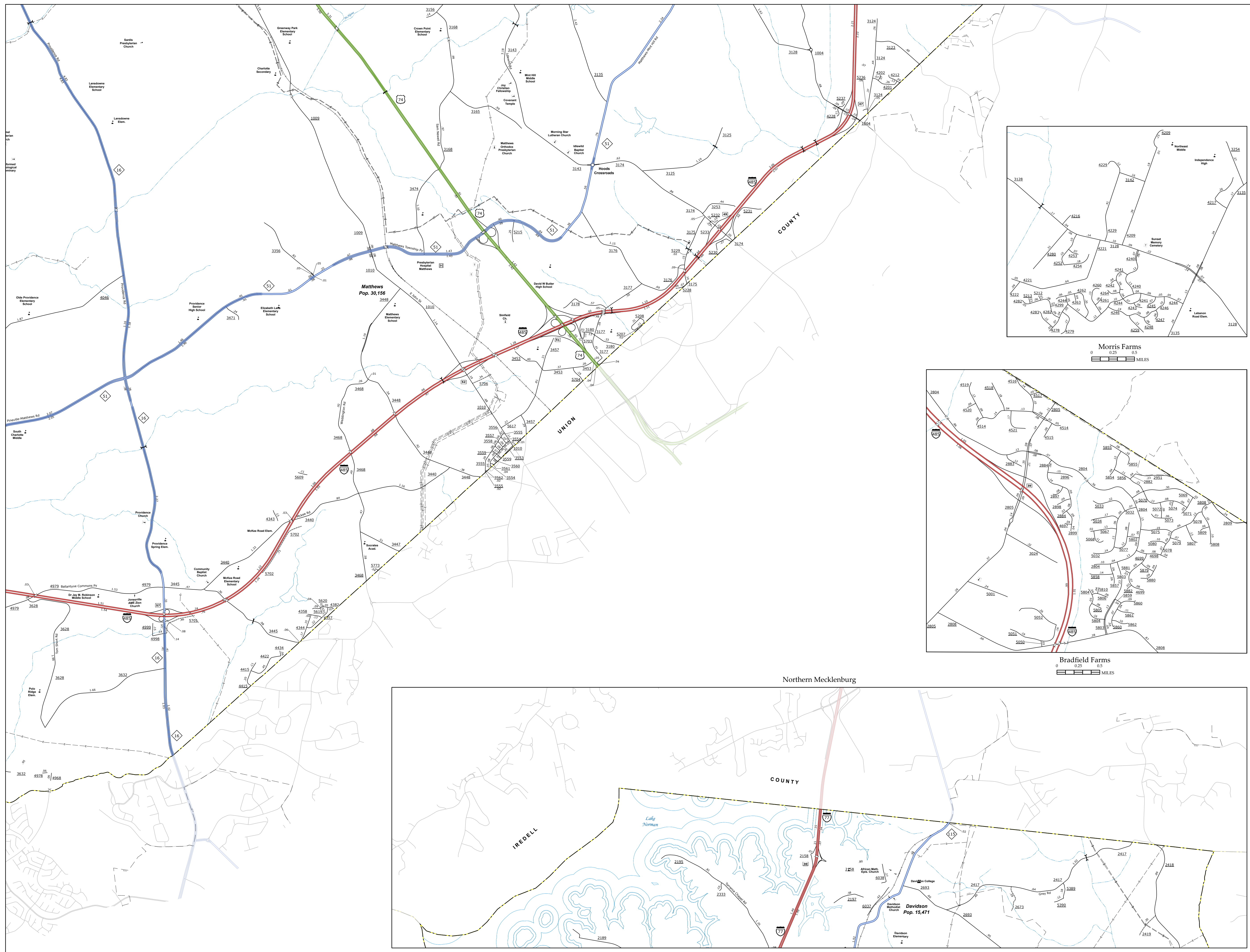
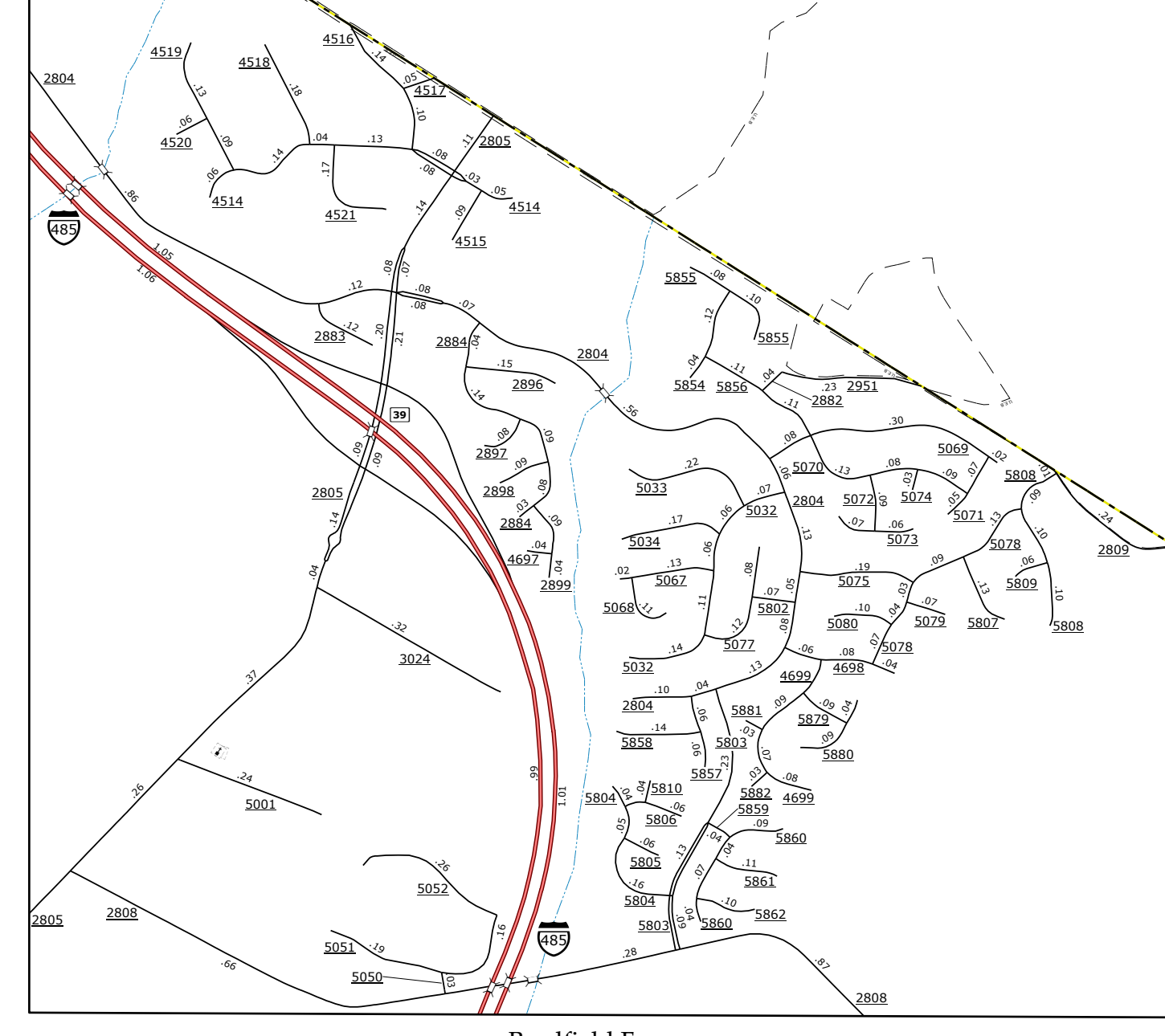
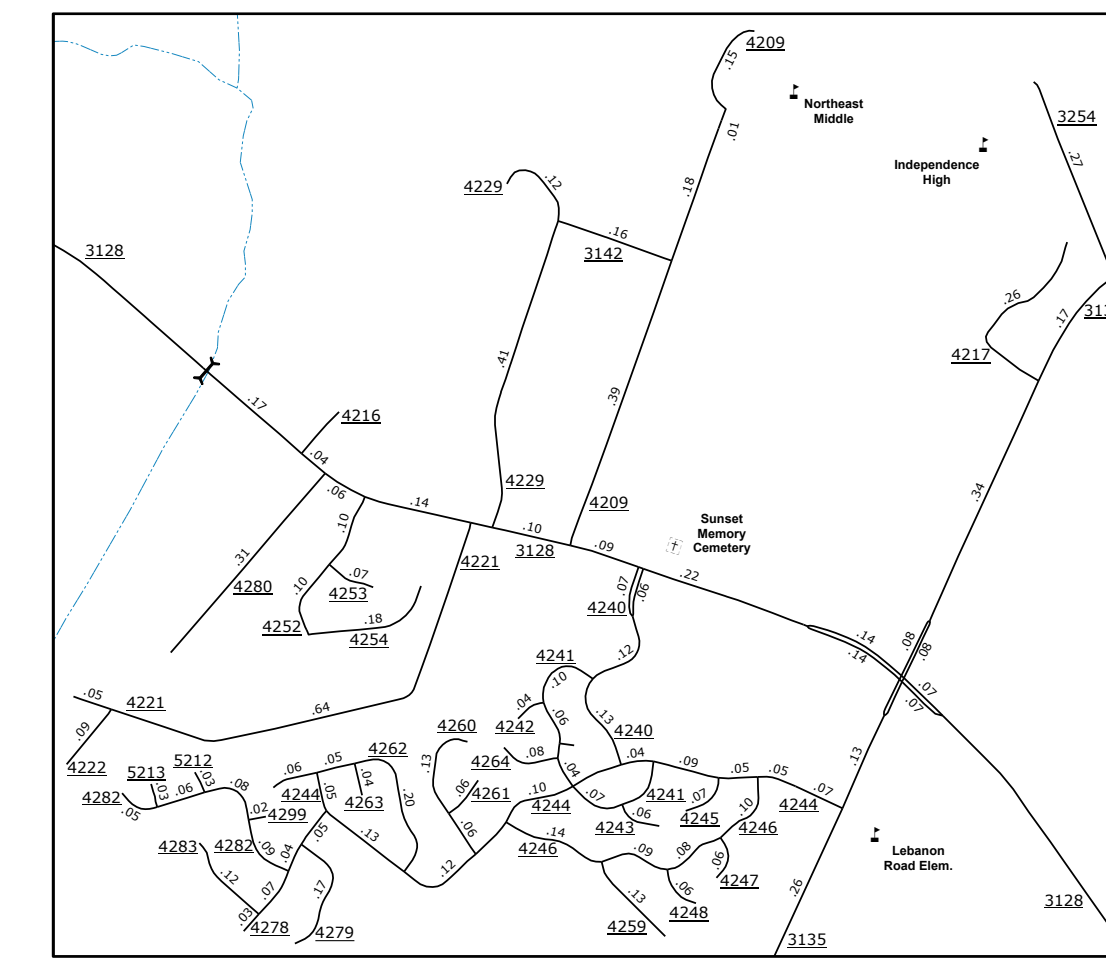
NORTH CAROLINA PLANE COORDINATE SYSTEM
LAMBERT CONFORMAL CONIC PROJECTION

Sheet Key



LEGEND

- INTERSTATE US: Double Dotted Line; NC: Dashed Dotted Line
- US NUMBERED HIGHWAY: Dotted Line
- NC NUMBERED HIGHWAY: Dashed Line
- US NUMBERED BI-CYCLE ROUTE: Dotted Line with Bicycle Symbol
- NC NUMBERED BI-CYCLE ROUTE: Dashed Line with Bicycle Symbol
- INTERSTATE INTERCHANGE NUMBER: Solid Line with 'I' and Number
- SECONDARY ROAD NUMBER: Solid Line with Number
- UTILITY LINES: Various symbols for Gas, Electric, Sewer, and Telephone
- RAILROAD LINE: Solid Line with Cross-Ticks
- RAILROAD STATION: Solid Line with 'R' and Number
- COUNTY LINE: Dashed Line
- STATE LINE: Dotted Line
- CITY LIMITS: Solid Line with 'C' and Number
- SMOOTHED URBAN BOUNDARIES: Solid Line with 'U' and Number
- FERRY ROUTE AND RAMP: Solid Line with 'F' and Number
- SANDY/CRACK OR STREAM: Solid Line with 'S' and Number
- WIDE-BEARING DRAINAGE: Solid Line with 'D' and Number
- RESERVE, POND OR LAKE W/ ISLAND: Solid Line with 'L' and Number
- DAM OR DAM WITH LOCK: Solid Line with 'L' and Number
- WATERFALL: Solid Line with 'W' and Number
- SWAMP: Solid Line with 'S' and Number
- COMMUNITY: Solid Line with 'C' and Number
- COUNTY SEAT: Solid Line with 'C' and Number
- SCHOOL: Solid Line with 'S' and Number
- COLLEGE OR UNIVERSITY: Solid Line with 'C' and Number
- HOSPITAL: Solid Line with 'H' and Number
- COAST GUARD STATION: Solid Line with 'C' and Number
- CHURCH: Solid Line with 'C' and Number
- CHEMICAL: Solid Line with 'C' and Number
- PARK STATION: Solid Line with 'P' and Number
- CORRECTION OR PENAL INSTITUTION: Solid Line with 'C' and Number
- QUARRY: Solid Line with 'Q' and Number
- SEMI-OR PIT: Solid Line with 'S' and Number
- INDUSTRIAL GARAGE OR MAINT YARD: Solid Line with 'I' and Number
- HIGHWAY DIV. OR DIST. OFFICE: Solid Line with 'H' and Number
- MILITARY POINT: Solid Line with 'M' and Number
- WATER STATION: Solid Line with 'W' and Number
- FARM BUILDING: Solid Line with 'F' and Number
- HISTORICAL SITE: Solid Line with 'H' and Number
- POINTS OF INTEREST: Solid Line with 'P' and Number
- PARK OFFICE: Solid Line with 'P' and Number
- STATE FOREST: Solid Line with 'S' and Number
- LIGHTHOUSE: Solid Line with 'L' and Number
- MOUNTAIN SUMMIT: Solid Line with 'M' and Number
- MOUNTAIN GAP: Solid Line with 'M' and Number
- OVERLOOK: Solid Line with 'O' and Number
- REST AREA: Solid Line with 'R' and Number
- VISITOR CENTER AREA: Solid Line with 'V' and Number
- WILCOX CENTER REST AREA: Solid Line with 'W' and Number
- AMPHITHEATRE: Solid Line with 'A' and Number
- MILITARY AIRPORT: Solid Line with 'M' and Number
- NATIONAL STATE FOREST BOUNDARY: Dotted Line
- WILDLIFE REFUGE: Solid Line with 'W' and Number
- NATIONAL STATE PARK BOUNDARY: Dashed Line
- GAME LANDS BOUNDARY: Dotted Line
- MILITARY RESERVATION BOUNDARY: Dotted Line
- INDIAN RESERVATION BOUNDARY: Dotted Line



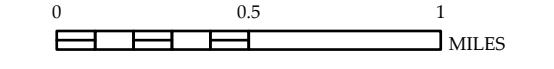
TERMS OF USE: The Mapping Section's goal is to provide the most accurate and current information possible. Map data is compiled from the data provided and may vary. The North Carolina Department of Transportation does not bear any responsibility for errors in this map data. This map is not intended for navigation purposes. For original content of the map or additional map products, visit <https://www.ncdot.gov/Information/About/MapProducts.aspx>.

COPIES OF THIS MAP ARE AVAILABLE TO THE PUBLIC BY CONTACTING US AT mapdata@ncdot.gov OR BY VISITING OUR WEBSITE AT www.ncdot.gov/Information/About/MapProducts.aspx. For more information on our map products, visit <https://www.ncdot.gov/Information/About/MapProducts.aspx>.



MECKLENBURG COUNTY NORTH CAROLINA

PREPARED BY THE
 NORTH CAROLINA DEPARTMENT OF TRANSPORTATION
 OPERATIONS PROGRAM MANAGEMENT UNIT - MAPPING SECTION
 IN COOPERATION WITH THE
 U.S. DEPARTMENT OF TRANSPORTATION
 FEDERAL HIGHWAY ADMINISTRATION
 SCALE



NORTH CAROLINA PLANE COORDINATE SYSTEM
 LAMBERT CONFORMAL CONIC PROJECTION