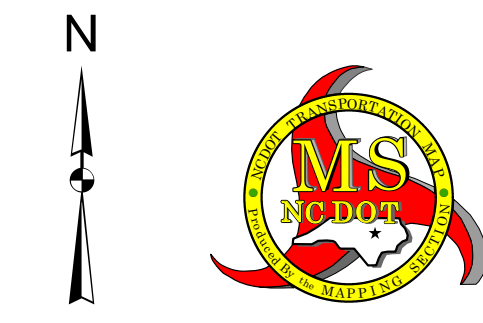
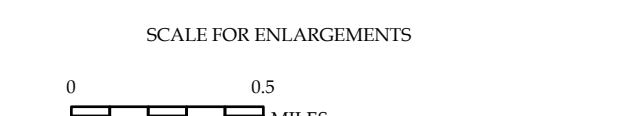


- LEGEND**
- INTERSTATE US NC Divided Hwy Undivided Hwy
 - BLUE BRIDGE PARKWAY
 - UNPAVED SURFACE ROAD
 - HAND-SURFACE ROAD
 - NOV-SYSTEM ROAD
 - PROVISIONALLY DRAWN ROAD
 - PROPOSED ROAD
 - INTERSECTION DISTANCE
 - STANDARD ROAD BRIDGE
 - RAILROAD BRIDGE
 - TRAIL BRIDGE
 - PEDESTRIAN BRIDGE
 - PEDESTRIAN UNDERPASS
 - VEHICULAR UNDERPASS
 - TUNNEL
 - CULVERT
 - PIPE
 - INTERSTATE HIGHWAY
 - U.S. NUMBERED HIGHWAY
 - NC NUMBERED HIGHWAY
 - NC NUMBERED BI-CYCLE ROUTE
 - NC NUMBERED BI-CYCLE ROUTE
 - INTERSTATE INTERCHANGE NUMBER
 - SECONDARY ROAD NUMBER
 - UTILITY LINE
 - RAILROAD LINE
 - RAILROAD STATION
 - INSLET AREA
 - STATE LINE
 - COUNTY LINE
 - CITY LIMITS
 - FERRY ROUTE
 - NARROW CREEK OR STREAM
 - WIDE RIVER OR CREEK
 - RESERVOIR, POND OR LAKE W/ ISLAND
 - DAM OR DAM WITH LAKE
 - WATERFALL
 - SNOWP
 - COMMUNITY TOWN OR CITY CENTER
 - COUNTY SEAT
 - SCHOOL
 - COLLEGE OR UNIVERSITY
 - HOSPITAL
 - CONV. GUARD STATION
 - CHURCH
 - CHURCH WITH CEMETERY
 - CEMETERY
 - PUBLIC STATION
 - CORRECTION OR PENAL INSTITUTION
 - QUARRY
 - MINE OR PIT
 - HIGHWAY GARAGE OR MAINT. YARD
 - HIGHWAY BUS OR REST STOP
 - MILITARY POST
 - WATER TOWER
 - FARMS
 - HISTORICAL SITE
 - POINTS OF INTEREST
 - STATE FOREST
 - EXPOSED
 - MOUNTAIN SUMMIT
 - OVERLOOK
 - REST AREA
 - VIEWING CREST REST AREA
 - WELCOME CTR. REST AREA
 - JANITOR
 - MILITARY AIRPORT
 - HILLTOP
 - NATIONAL STATE FOREST BOUNDARY
 - WILDLIFE REFUGE
 - NATIONAL STATE PARK BOUNDARY
 - GAME LANDS BOUNDARY
 - MILITARY RESERVATION BOUNDARY
 - INDIAN RESERVATION BOUNDARY



HAYWOOD COUNTY NORTH CAROLINA

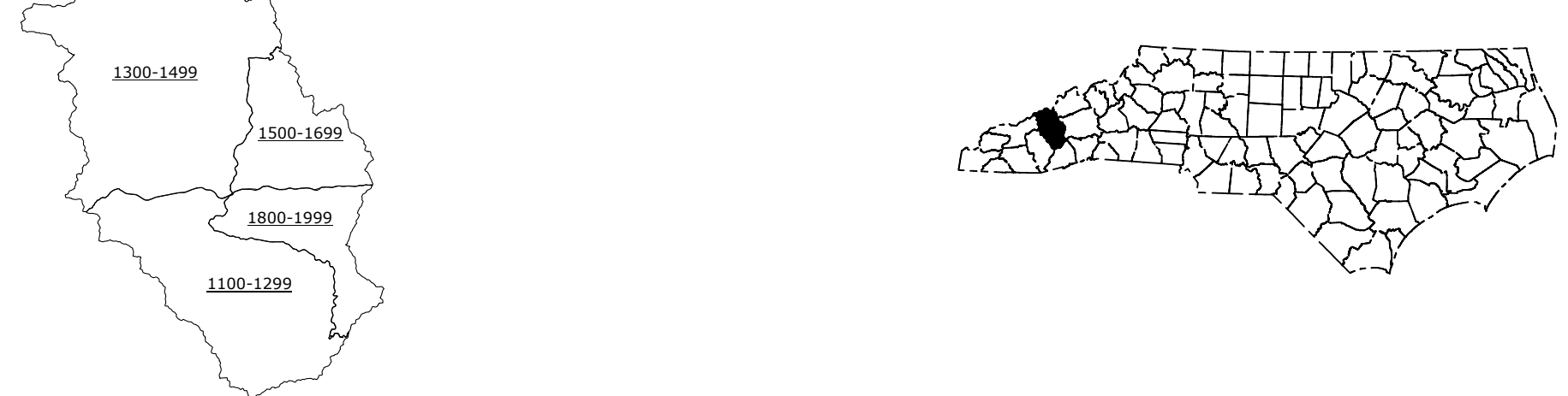
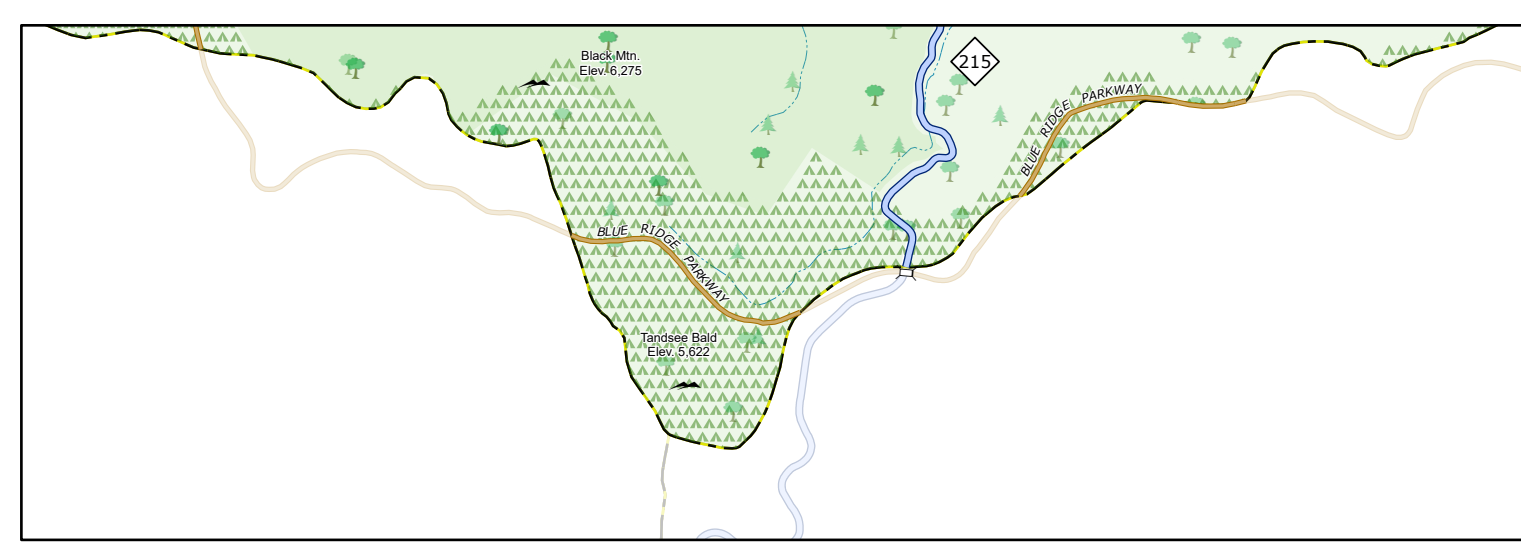
PREPARED BY THE NORTH CAROLINA DEPARTMENT OF TRANSPORTATION OPERATIONS PROGRAM MANAGEMENT UNIT - MAPPING SECTION IN COOPERATION WITH THE U.S. DEPARTMENT OF TRANSPORTATION FEDERAL HIGHWAY ADMINISTRATION



NORTH CAROLINA PLANE COORDINATE SYSTEM LAMBERT CONFORMAL CONIC PROJECTION

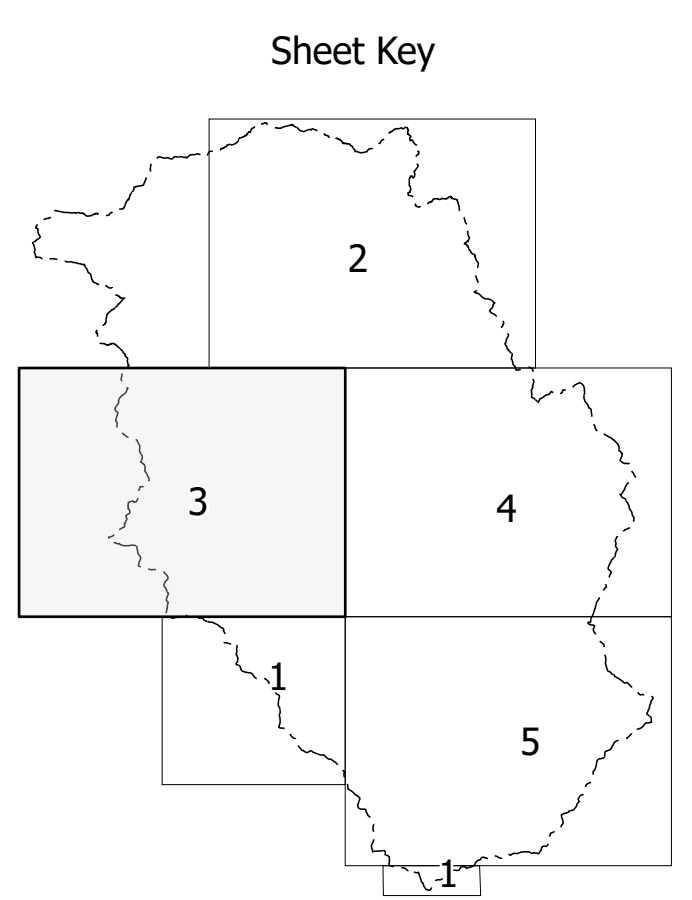
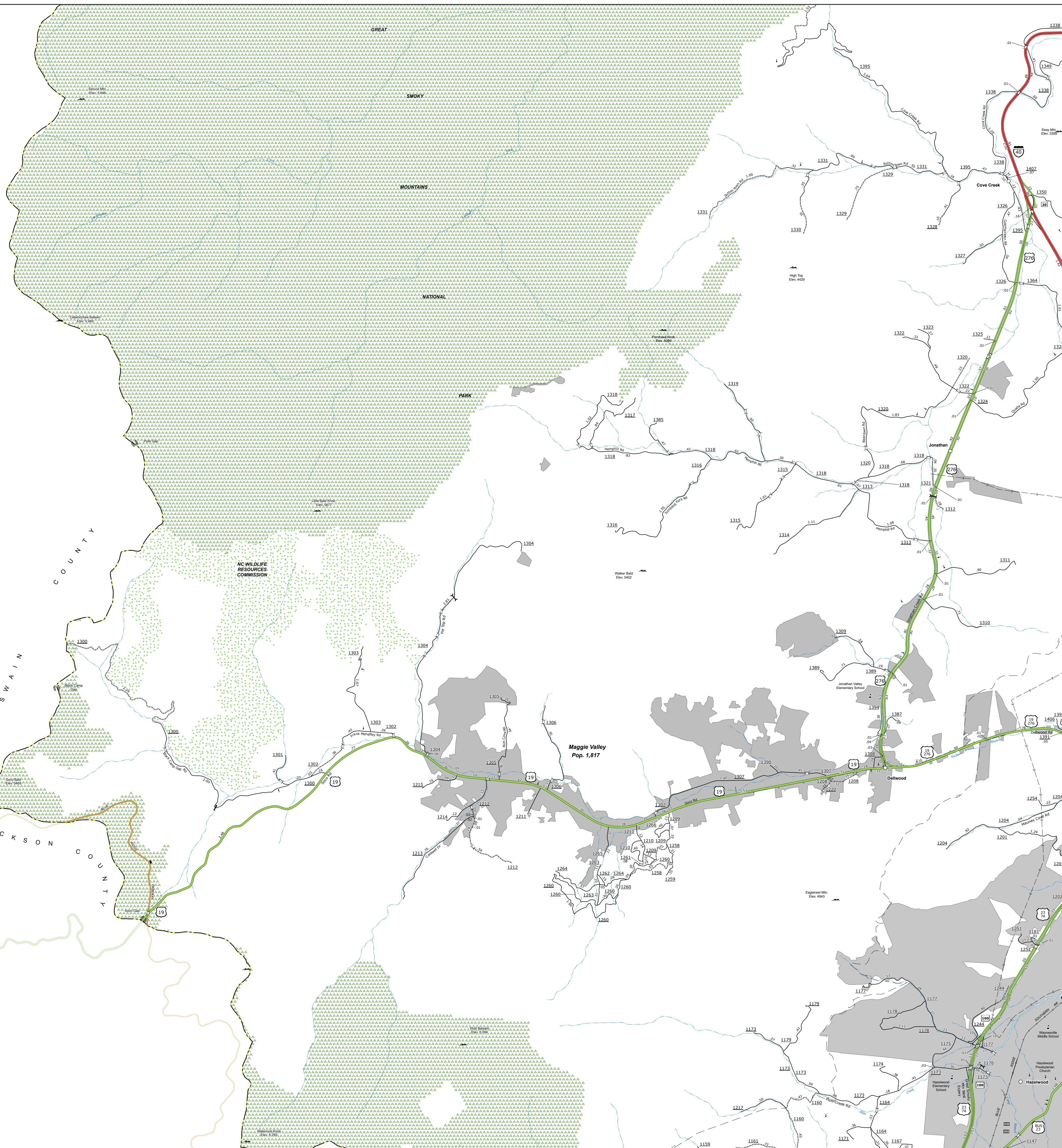
COPIES OF THIS MAP ARE AVAILABLE TO THE PUBLIC AT NOMINAL COST. CONTACT US TO ORDER: maporders@ncdot.gov <http://connect.ncdot.gov/resources/State-Mapping/Pages/Ordering-Maps.aspx> (919) 834-8480

TERMS OF USE: The Mapping Section's goal is to provide the most accurate and current information possible. Map data is compiled from numerous sources with varying dates of publication and map accuracy standards. As a result, the accuracy, currency, and completeness of the data provided will vary. The North Carolina Department of Transportation shall not be held liable for any errors in the map data. This map cannot be construed to be a legal document. The information shown on this map was last updated on April 2024. For digital copies of this map or additional map products, visit <http://connect.ncdot.gov/resources/State-Mapping>



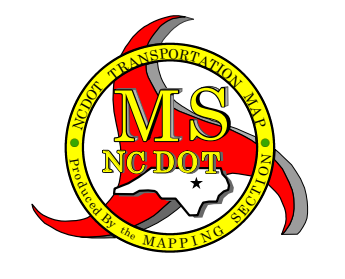
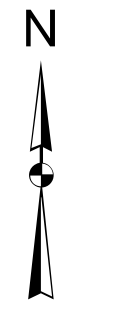
TERMS OF USE: This Mapping Section's goal is to provide the most accurate and current information possible. Map data is compiled from the most current available data. The North Carolina Department of Transportation and its contractors do not warrant the accuracy or completeness of the data shown on this map. The North Carolina Department of Transportation and its contractors do not assume any liability for errors or omissions on this map. For more information on this map, please contact the Mapping Section at (919) 419-3333.

COPIES OF THIS MAP ARE AVAILABLE TO THE PUBLIC AT NO CHARGE. CONTACT US TO ORDER: (919) 419-3333 OR VISIT OUR WEBSITE AT: www.ncdot.gov



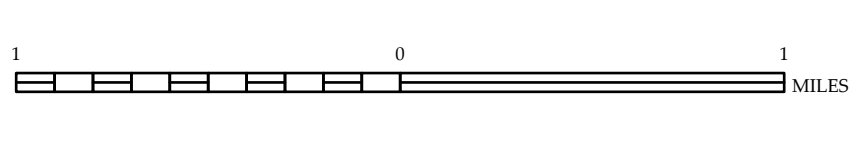
LEGEND

- INTERSTATE US NC
- US 19
- US 276
- US 24
- US 90
- US 106
- US 108
- US 117
- US 124
- US 128
- US 133
- US 134
- US 135
- US 136
- US 137
- US 138
- US 139
- US 140
- US 141
- US 142
- US 143
- US 144
- US 145
- US 146
- US 147
- US 148
- US 149
- US 150
- US 151
- US 152
- US 153
- US 154
- US 155
- US 156
- US 157
- US 158
- US 159
- US 160
- US 161
- US 162
- US 163
- US 164
- US 165
- US 166
- US 167
- US 168
- US 169
- US 170
- US 171
- US 172
- US 173
- US 174
- US 175
- US 176
- US 177
- US 178
- US 179
- US 180
- US 181
- US 182
- US 183
- US 184
- US 185
- US 186
- US 187
- US 188
- US 189
- US 190
- US 191
- US 192
- US 193
- US 194
- US 195
- US 196
- US 197
- US 198
- US 199
- US 200
- US 201
- US 202
- US 203
- US 204
- US 205
- US 206
- US 207
- US 208
- US 209
- US 210
- US 211
- US 212
- US 213
- US 214
- US 215
- US 216
- US 217
- US 218
- US 219
- US 220
- US 221
- US 222
- US 223
- US 224
- US 225
- US 226
- US 227
- US 228
- US 229
- US 230
- US 231
- US 232
- US 233
- US 234
- US 235
- US 236
- US 237
- US 238
- US 239
- US 240
- US 241
- US 242
- US 243
- US 244
- US 245
- US 246
- US 247
- US 248
- US 249
- US 250
- US 251
- US 252
- US 253
- US 254
- US 255
- US 256
- US 257
- US 258
- US 259
- US 260
- US 261
- US 262
- US 263
- US 264
- US 265
- US 266
- US 267
- US 268
- US 269
- US 270
- US 271
- US 272
- US 273
- US 274
- US 275
- US 276
- US 277
- US 278
- US 279
- US 280
- US 281
- US 282
- US 283
- US 284
- US 285
- US 286
- US 287
- US 288
- US 289
- US 290
- US 291
- US 292
- US 293
- US 294
- US 295
- US 296
- US 297
- US 298
- US 299
- US 300
- US 301
- US 302
- US 303
- US 304
- US 305
- US 306
- US 307
- US 308
- US 309
- US 310
- US 311
- US 312
- US 313
- US 314
- US 315
- US 316
- US 317
- US 318
- US 319
- US 320
- US 321
- US 322
- US 323
- US 324
- US 325
- US 326
- US 327
- US 328
- US 329
- US 330
- US 331
- US 332
- US 333
- US 334
- US 335
- US 336
- US 337
- US 338
- US 339
- US 340
- US 341
- US 342
- US 343
- US 344
- US 345
- US 346
- US 347
- US 348
- US 349
- US 350
- US 351
- US 352
- US 353
- US 354
- US 355
- US 356
- US 357
- US 358
- US 359
- US 360
- US 361
- US 362
- US 363
- US 364
- US 365
- US 366
- US 367
- US 368
- US 369
- US 370
- US 371
- US 372
- US 373
- US 374
- US 375
- US 376
- US 377
- US 378
- US 379
- US 380
- US 381
- US 382
- US 383
- US 384
- US 385
- US 386
- US 387
- US 388
- US 389
- US 390
- US 391
- US 392
- US 393
- US 394
- US 395
- US 396
- US 397
- US 398
- US 399
- US 400
- US 401
- US 402
- US 403
- US 404
- US 405
- US 406
- US 407
- US 408
- US 409
- US 410
- US 411
- US 412
- US 413
- US 414
- US 415
- US 416
- US 417
- US 418
- US 419
- US 420
- US 421
- US 422
- US 423
- US 424
- US 425
- US 426
- US 427
- US 428
- US 429
- US 430
- US 431
- US 432
- US 433
- US 434
- US 435
- US 436
- US 437
- US 438
- US 439
- US 440
- US 441
- US 442
- US 443
- US 444
- US 445
- US 446
- US 447
- US 448
- US 449
- US 450
- US 451
- US 452
- US 453
- US 454
- US 455
- US 456
- US 457
- US 458
- US 459
- US 460
- US 461
- US 462
- US 463
- US 464
- US 465
- US 466
- US 467
- US 468
- US 469
- US 470
- US 471
- US 472
- US 473
- US 474
- US 475
- US 476
- US 477
- US 478
- US 479
- US 480
- US 481
- US 482
- US 483
- US 484
- US 485
- US 486
- US 487
- US 488
- US 489
- US 490
- US 491
- US 492
- US 493
- US 494
- US 495
- US 496
- US 497
- US 498
- US 499
- US 500
- US 501
- US 502
- US 503
- US 504
- US 505
- US 506
- US 507
- US 508
- US 509
- US 510
- US 511
- US 512
- US 513
- US 514
- US 515
- US 516
- US 517
- US 518
- US 519
- US 520
- US 521
- US 522
- US 523
- US 524
- US 525
- US 526
- US 527
- US 528
- US 529
- US 530
- US 531
- US 532
- US 533
- US 534
- US 535
- US 536
- US 537
- US 538
- US 539
- US 540
- US 541
- US 542
- US 543
- US 544
- US 545
- US 546
- US 547
- US 548
- US 549
- US 550
- US 551
- US 552
- US 553
- US 554
- US 555
- US 556
- US 557
- US 558
- US 559
- US 560
- US 561
- US 562
- US 563
- US 564
- US 565
- US 566
- US 567
- US 568
- US 569
- US 570
- US 571
- US 572
- US 573
- US 574
- US 575
- US 576
- US 577
- US 578
- US 579
- US 580
- US 581
- US 582
- US 583
- US 584
- US 585
- US 586
- US 587
- US 588
- US 589
- US 590
- US 591
- US 592
- US 593
- US 594
- US 595
- US 596
- US 597
- US 598
- US 599
- US 600
- US 601
- US 602
- US 603
- US 604
- US 605
- US 606
- US 607
- US 608
- US 609
- US 610
- US 611
- US 612
- US 613
- US 614
- US 615
- US 616
- US 617
- US 618
- US 619
- US 620
- US 621
- US 622
- US 623
- US 624
- US 625
- US 626
- US 627
- US 628
- US 629
- US 630
- US 631
- US 632
- US 633
- US 634
- US 635
- US 636
- US 637
- US 638
- US 639
- US 640
- US 641
- US 642
- US 643
- US 644
- US 645
- US 646
- US 647
- US 648
- US 649
- US 650
- US 651
- US 652
- US 653
- US 654
- US 655
- US 656
- US 657
- US 658
- US 659
- US 660
- US 661
- US 662
- US 663
- US 664
- US 665
- US 666
- US 667
- US 668
- US 669
- US 670
- US 671
- US 672
- US 673
- US 674
- US 675
- US 676
- US 677
- US 678
- US 679
- US 680
- US 681
- US 682
- US 683
- US 684
- US 685
- US 686
- US 687
- US 688
- US 689
- US 690
- US 691
- US 692
- US 693
- US 694
- US 695
- US 696
- US 697
- US 698
- US 699
- US 700
- US 701
- US 702
- US 703
- US 704
- US 705
- US 706
- US 707
- US 708
- US 709
- US 710
- US 711
- US 712
- US 713
- US 714
- US 715
- US 716
- US 717
- US 718
- US 719
- US 720
- US 721
- US 722
- US 723
- US 724
- US 725
- US 726
- US 727
- US 728
- US 729
- US 730
- US 731
- US 732
- US 733
- US 734
- US 735
- US 736
- US 737
- US 738
- US 739
- US 740
- US 741
- US 742
- US 743
- US 744
- US 745
- US 746
- US 747
- US 748
- US 749
- US 750
- US 751
- US 752
- US 753
- US 754
- US 755
- US 756
- US 757
- US 758
- US 759
- US 760
- US 761
- US 762
- US 763
- US 764
- US 765
- US 766
- US 767
- US 768
- US 769
- US 770
- US 771
- US 772
- US 773
- US 774
- US 775
- US 776
- US 777
- US 778
- US 779
- US 780
- US 781
- US 782
- US 783
- US 784
- US 785
- US 786
- US 787
- US 788
- US 789
- US 790
- US 791
- US 792
- US 793
- US 794
- US 795
- US 796
- US 797
- US 798
- US 799
- US 800
- US 801
- US 802
- US 803
- US 804
- US 805
- US 806
- US 807
- US 808
- US 809
- US 810
- US 811
- US 812
- US 813
- US 814
- US 815
- US 816
- US 817
- US 818
- US 819
- US 820
- US 821
- US 822
- US 823
- US 824
- US 825
- US 826
- US 827
- US 828
- US 829
- US 830
- US 831
- US 832
- US 833
- US 834
- US 835
- US 836
- US 837
- US 838
- US 839
- US 840
- US 841
- US 842
- US 843
- US 844
- US 845
- US 846
- US 847
- US 848
- US 849
- US 850
- US 851
- US 852
- US 853
- US 854
- US 855
- US 856
- US 857
- US 858
- US 859
- US 860
- US 861
- US 862
- US 863
- US 864
- US 865
- US 866
- US 867
- US 868
- US 869
- US 870
- US 871
- US 872
- US 873
- US 874
- US 875
- US 876
- US 877
- US 878
- US 879
- US 880
- US 881
- US 882
- US 883
- US 884
- US 885
- US 886
- US 887
- US 888
- US 889
- US 890
- US 891
- US 892
- US 893
- US 894
- US 895
- US 896
- US 897
- US 898
- US 899
- US 900
- US 901
- US 902
- US 903
- US 904
- US 905
- US 906
- US 907
- US 908
- US 909
- US 910
- US 911
- US 912
- US 913
- US 914
- US 915
- US 916
- US 917
- US 918
- US 919
- US 920
- US 921
- US 922
- US 923
- US 924
- US 925
- US 926
- US 927
- US 928
- US 929
- US 930
- US 931
- US 932
- US 933
- US 934
- US 935
- US 936
- US 937
- US 938
- US 939
- US 940
- US 941
- US 942
- US 943
- US 944
- US 945
- US 946
- US 947
- US 948
- US 949
- US 950
- US 951
- US 952
- US 953
- US 954
- US 955
- US 956
- US 957
- US 958
- US 959
- US 960
- US 961
- US 962
- US 963
- US 964
- US 965
- US 966
- US 967
- US 968
- US 969
- US 970
- US 971
- US 972
- US 973
- US 974
- US 975
- US 976
- US 977
- US 978
- US 979
- US 980
- US 981
- US 982
- US 983
- US 984
- US 985
- US 986
- US 987
- US 988
- US 989
- US 990
- US 991
- US 992
- US 993
- US 994
- US 995
- US 996
- US 997
- US 998
- US 999
- US 1000



**HAYWOOD COUNTY
NORTH CAROLINA**

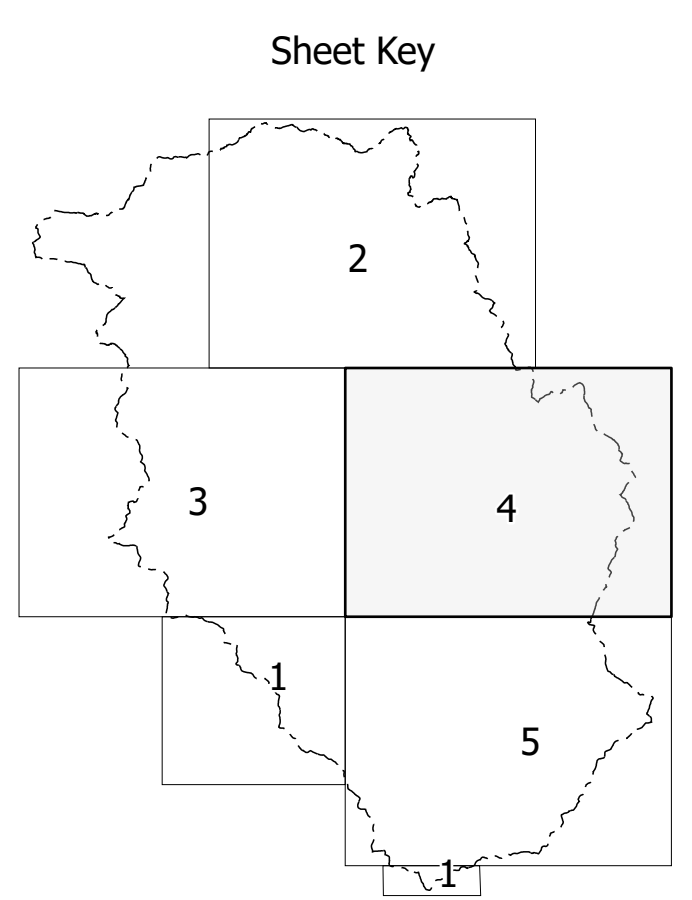
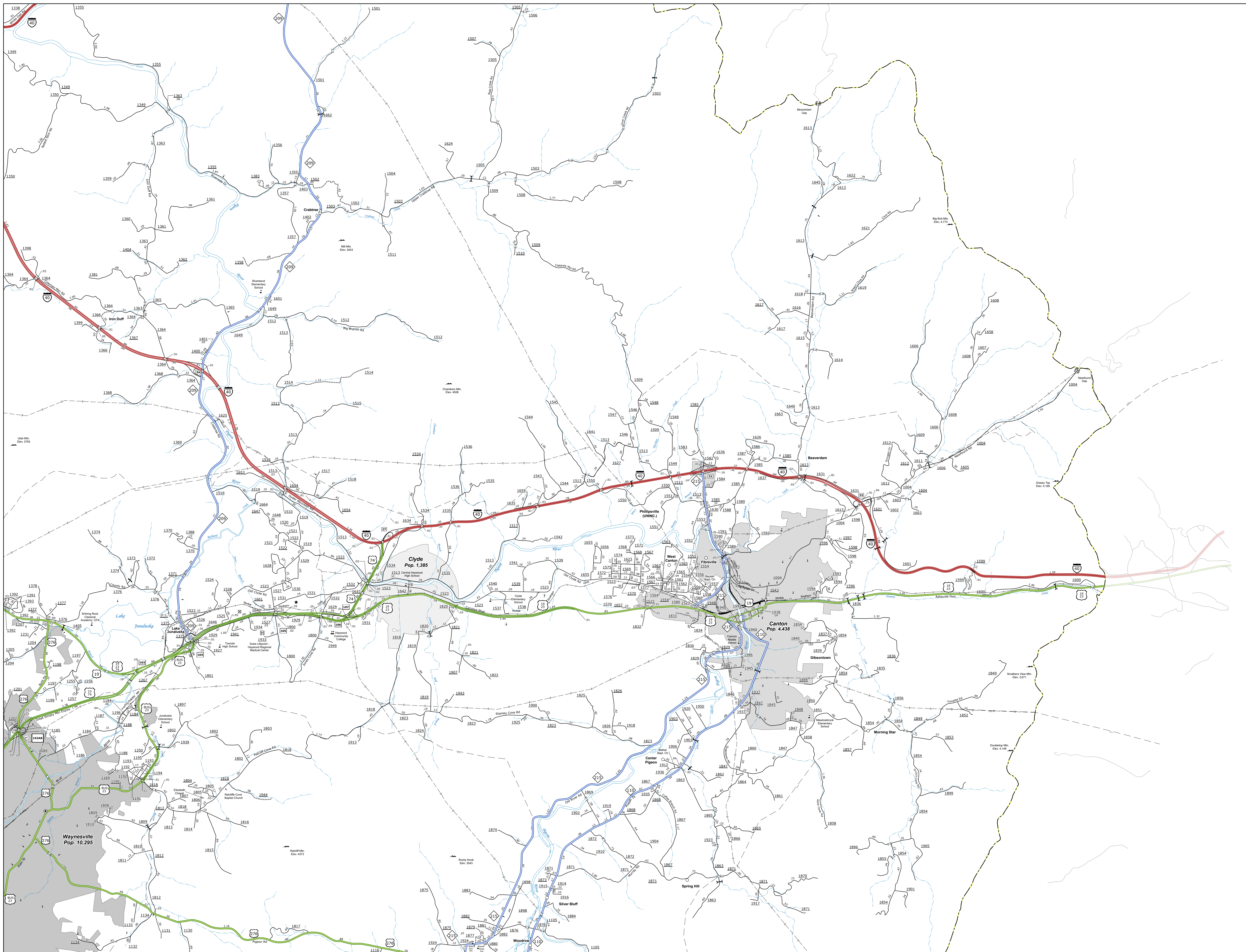
PREPARED BY THE
NORTH CAROLINA DEPARTMENT OF TRANSPORTATION
OPERATIONS PROGRAM MANAGEMENT UNIT - MAPPING SECTION
IN COOPERATION WITH THE
U.S. DEPARTMENT OF TRANSPORTATION
FEDERAL HIGHWAY ADMINISTRATION



NORTH CAROLINA PLANE COORDINATE SYSTEM
LAMBERT CONFORMAL CONIC PROJECTION

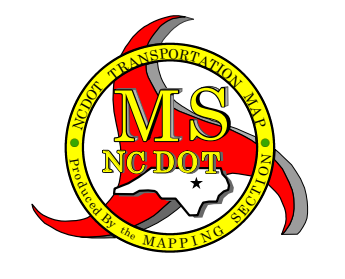
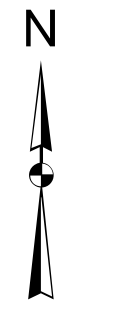
TERMS OF USE: This Mapping Section's goal is to provide the most accurate and current information possible. Map data is compiled from the most current available data. The North Carolina Department of Transportation does not warrant the accuracy, completeness, or timeliness of the data provided. The user assumes all liability for any use of the data. The user agrees to hold the Department of Transportation harmless for any use of the data. The user agrees to indemnify and hold the Department of Transportation harmless for any use of the data.

COPIES OF THIS MAP ARE AVAILABLE TO THE PUBLIC AT THE CONTACT US TO ORDER: <http://www.ncdot.gov/transportation/operations/management/unit/mapping>



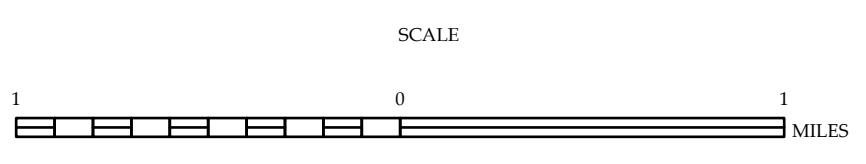
LEGEND

- INTERSTATE US NC
- BLUE RIDGE PARKWAY
- CONCRETE PAVED ROAD
- PAVED SURFACED ROAD
- NON-STEEL ROAD
- PROFESSIONALLY DRAWN ROAD
- PROPOSED LOCATION
- INTERSECTION OVERPASS
- STANDARD ROAD BRIDGE
- RAILROAD BRIDGE
- DRAW SPAN ON BRIDGE
- PIEDMONT WALKWAY
- PIEDMONT UNDERPASS
- STREET LIGHT UNDERPASS
- TUNNEL
- FLUYERT
- RAILROAD
- INTERSTATE HIGHWAY
- U.S. NUMBERED HIGHWAY
- N.C. NUMBERED HIGHWAY
- N.C. NUMBERED BI-CYCLE ROUTE
- INTERSTATE INTERCHANGE NUMBER
- SECONDARY ROAD NUMBER
- UTILITY LINES
- RAILROAD LINE
- RAILROAD STATION
- POST AREA
- STATE LINE
- COUNTY LINE
- CITY LIMITS
- FERRY ROUTE
- NARROW CREEK OR STREAM
- WIDE RIVER OR CREEK
- RESERVOIR, POND OR LAKE W/ ISLAND
- DAM OR DAM WITH LAKE
- WATERFALL
- SWAMP
- COMMUNITY, TOWN OR CITY CENTER
- COUNTY SEAT
- SCHOOL
- COLLEGE OR UNIVERSITY
- HOSPITAL
- COURT HOUSE
- CHURCH
- CHURCH WITH CEMETERY
- CEMETERY
- PARK STATION
- CORRECTION OR PENAL INSTITUTION
- QUARRY
- TRUCK OR TRAILER
- HIGHWAY GARAGE OR MAINT. YARD
- HIGHWAY DIST. OR DIST. OFFICE
- MILITARY POST
- STATION
- HISTORICAL SITE
- PROTECTOR INTEREST
- STATE FOREST
- SOUTH FORGE
- MOUNTAIN SUMMIT
- OVERLOOK
- REST AREA
- VISITOR CENTER REST AREA
- WELCOME CENTER REST AREA
- AIRPORT
- MILITARY AIRPORT
- HELIPORT
- NATIONAL STATE FOREST BOUNDARY
- WILDLIFE REFUGE
- NATIONAL STATE PARK BOUNDARY
- GAME LANDS BOUNDARY
- MILITARY RESERVATION BOUNDARY
- INDIAN RESERVATION BOUNDARY



HAYWOOD COUNTY
NORTH CAROLINA

PREPARED BY THE
NORTH CAROLINA DEPARTMENT OF TRANSPORTATION
OPERATIONS PROGRAM MANAGEMENT UNIT - MAPPING SECTION
IN COOPERATION WITH THE
U.S. DEPARTMENT OF TRANSPORTATION
FEDERAL HIGHWAY ADMINISTRATION



NORTH CAROLINA PLANE COORDINATE SYSTEM
LAMBERT CONFORMAL CONIC PROJECTION

