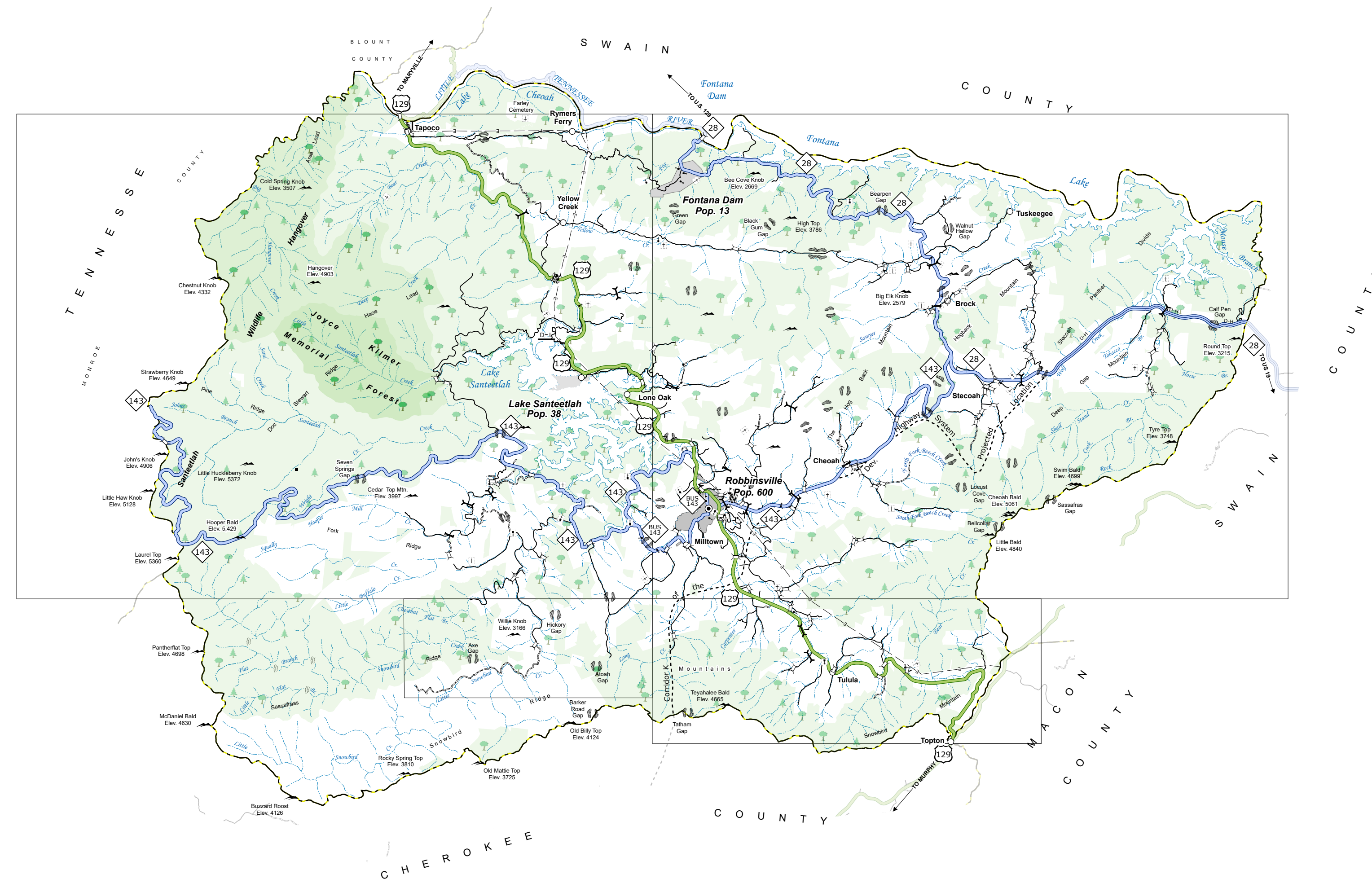
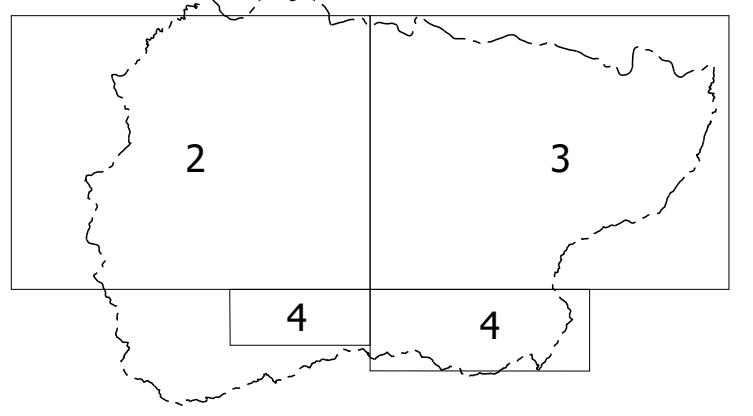
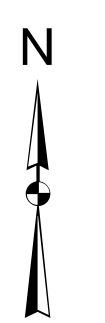
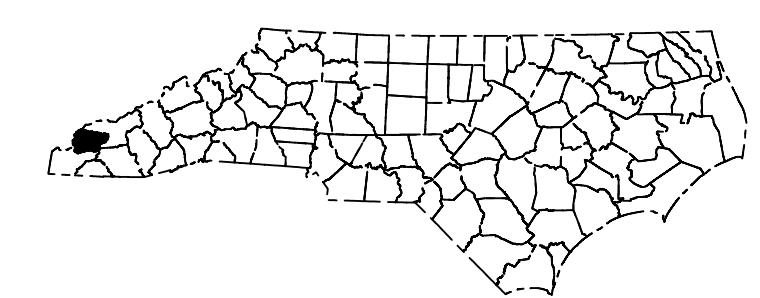
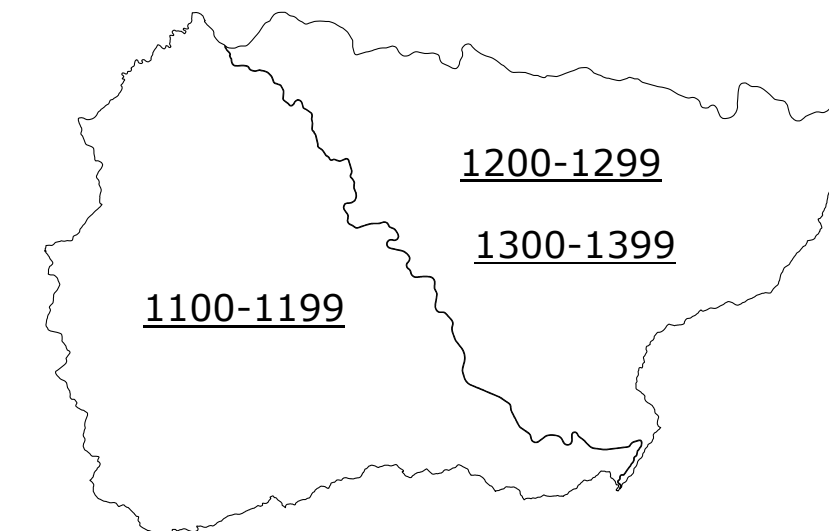


Sheet Key



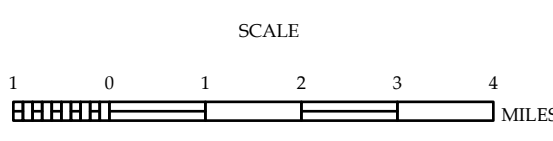
LEGEND

- Legend items including Interstate, US, NC, Divided Hwy, Unimproved Hwy, Blue Ridge Parkway, Unimproved Substandard Road, etc.



GRAHAM COUNTY NORTH CAROLINA

PREPARED BY THE NORTH CAROLINA DEPARTMENT OF TRANSPORTATION OPERATIONS PROGRAM MANAGEMENT UNIT - MAPPING SECTION



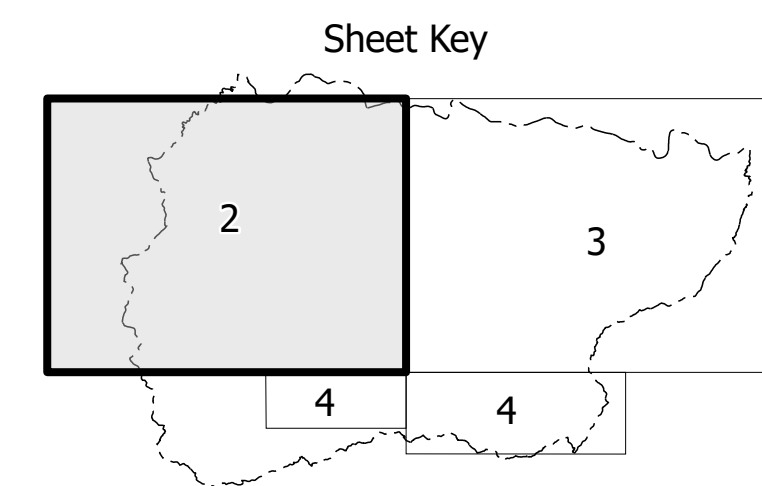
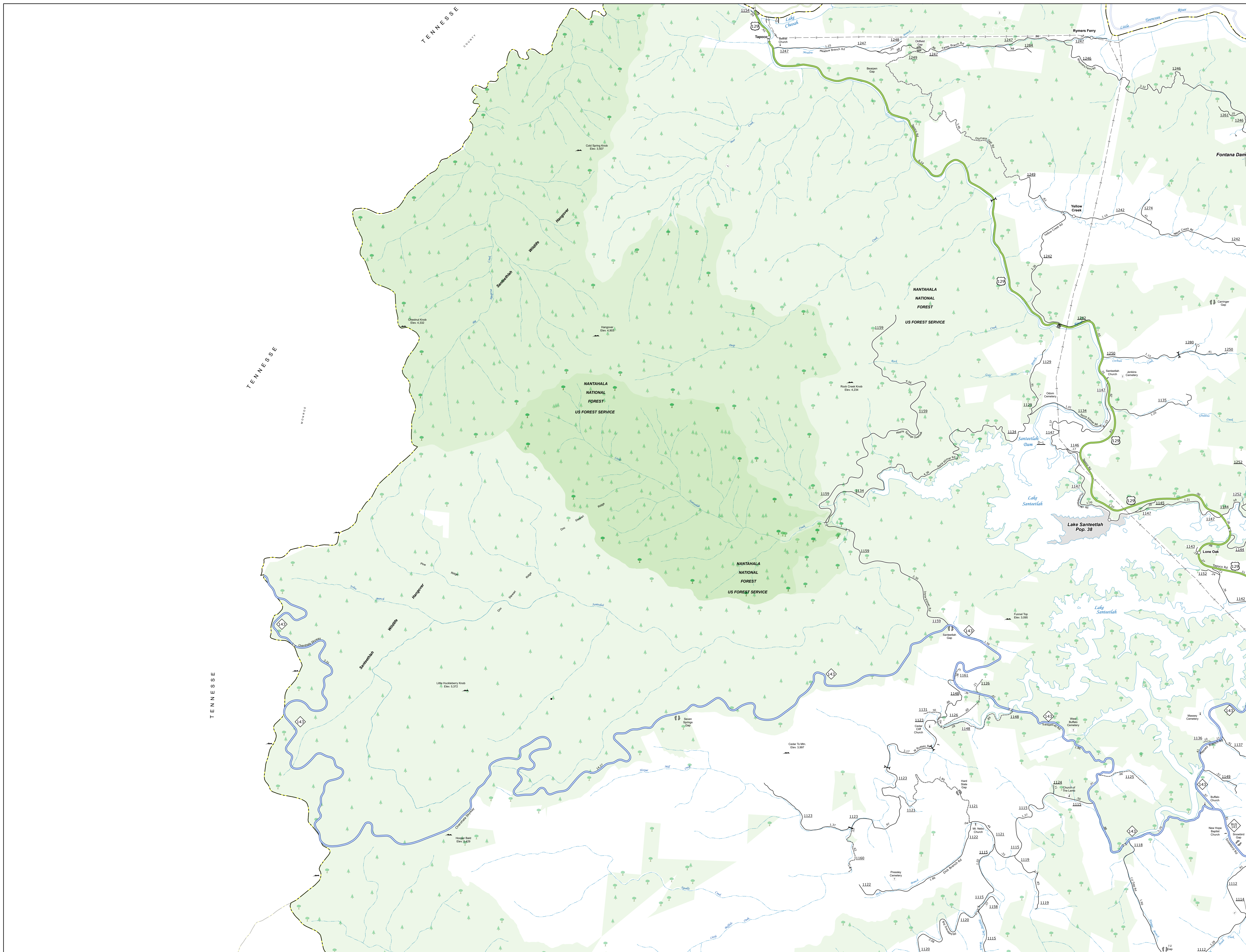
COPIES OF THIS MAP ARE AVAILABLE TO THE PUBLIC AT NOMINAL COST. CONTACT US TO ORDER: mapandgis@ncdot.gov

TERMS OF USE: The Mapping Section's goal is to provide the most accurate and current information possible. Map data is compiled from numerous sources with varying dates of publication and map accuracy standards.

NORTH CAROLINA PLANE COORDINATE SYSTEM LAMBERT CONFORMAL CONIC PROJECTION SHEET 1 OF 4

TERMS OF USE: The Mapping Section's goal is to provide the most accurate and current information possible. Map data is compiled from various sources with varying degrees of accuracy. As a result, the accuracy, currency, and completeness of the information cannot be guaranteed. The information shown on this map was compiled in April 2024. Any errors or omissions are the responsibility of the user. For more information, please contact the Mapping Section at (704) 769-1111.

COPIES OF THIS MAP ARE AVAILABLE TO THE PUBLIC AT NO FORMAL COST. CONTACT US TO ORDER: (704) 769-1111. URL: https://www.ncdot.gov/transportation/operations-program-management-unit/mapping-section/



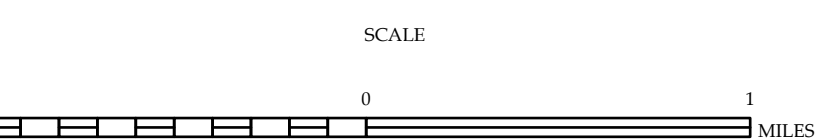
LEGEND

- INTERSTATE US NC
- Divided Hwy
- Undivided Hwy
- BLUE RIDGE PARKWAY
- CONCRETE PAVED ROAD
- HARD SURFACED ROAD
- NON-SYSTEM ROAD
- PROVISIONALLY OPEN ROAD
- PROPOSED LOCATION
- INTERSECTION OVERPASS
- STANDARD ROAD BRIDGE
- RAILROAD BRIDGE
- DRAW SPAN ON BRIDGE
- FEEDTHRU BRIDGE
- FEEDTHRU UNDERPASS
- VEHICLE UNDERPASS
- TUNNEL
- RAILROAD
- UTILITY LINE
- RAILROAD LINE
- RAILROAD STATION
- POST AREA
- STATE LINE
- COUNTY LINE
- CITY LIMITS
- FERRY ROUTE
- NARROW CREEK OR STREAM
- WIDE RIVER OR CREEK
- RESERVOIR, POND OR LAKE W/ ISLAND
- DAM OR DAM WITH LAKE
- WATERFALL
- SWAMP
- COMMUNITY TOWN OR CITY CENTER
- COUNTY SEAT
- SCHOOL
- COLLEGE OR UNIVERSITY
- HOSPITAL
- COAST GUARD STATION
- CHURCH
- CHURCH WITH CEMETERY
- CEMETERY
- PARK STATION
- CORRECTION OR PENAL INSTITUTION
- QUARRY
- HIGHWAY BUS STOP
- HIGHWAY GARAGE OR MAINT. YARD
- HIGHWAY DIST. OR DIST. OFFICE
- MILITARY POST
- WELSH STATION
- FARGO STATION
- HISTORICAL SITE
- POINT OF INTEREST
- STATE FOREST
- SOUTH BOUND
- MOUNTAIN SUMMIT
- OVERLOOK
- REST AREA
- VISITOR CENTER REST AREA
- WILDLIFE CENTER REST AREA
- AIRPORT
- MILITARY AIRPORT
- FIELD POST
- NATIONAL STATE FOREST BOUNDARY
- WILDLIFE REFUGE
- NATIONAL STATE PARK BOUNDARY
- GAME LANDS BOUNDARY
- MILITARY RESERVATION BOUNDARY
- INDIAN RESERVATION BOUNDARY

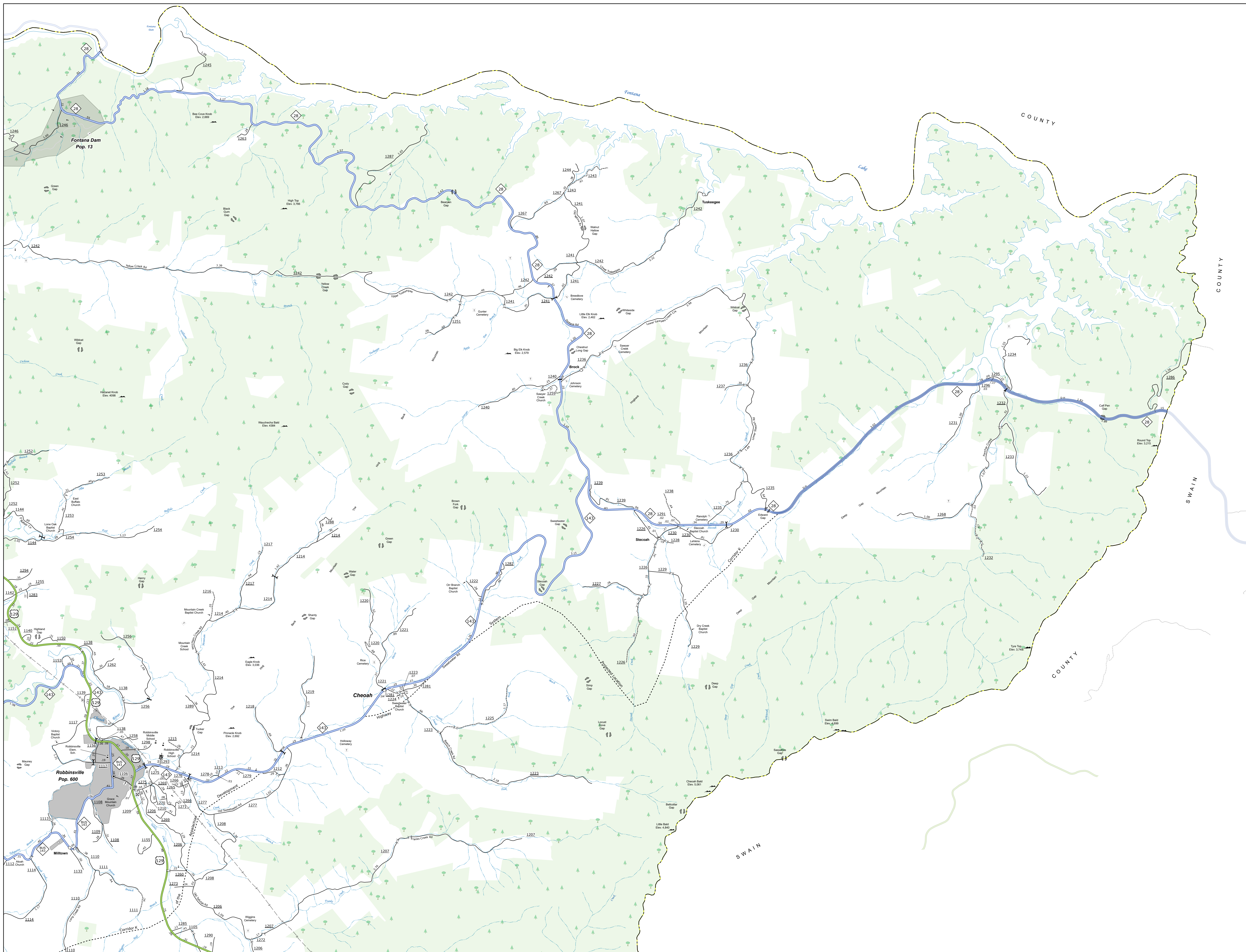


GRAHAM COUNTY
NORTH CAROLINA

PREPARED BY THE
NORTH CAROLINA DEPARTMENT OF TRANSPORTATION
OPERATIONS PROGRAM MANAGEMENT UNIT - MAPPING SECTION
IN COOPERATION WITH THE
U.S. DEPARTMENT OF TRANSPORTATION
FEDERAL HIGHWAY ADMINISTRATION

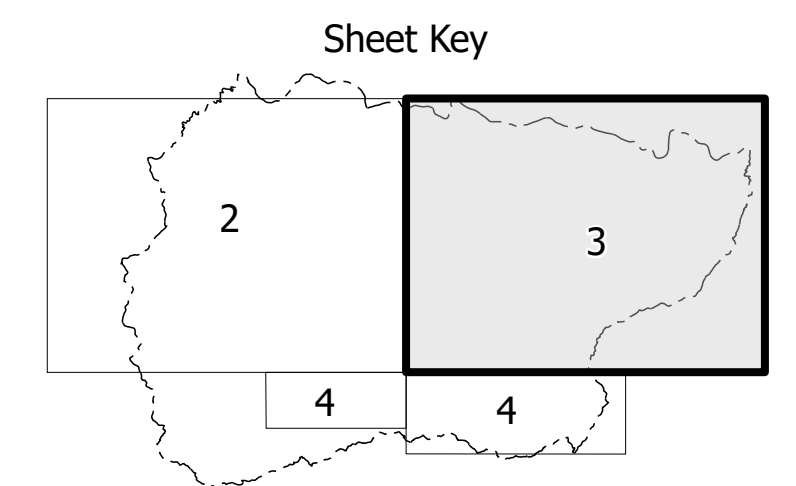


NORTH CAROLINA PLANE COORDINATE SYSTEM
LAMBERT CONFORMAL CONIC PROJECTION



TERMS OF USE: The Mapping Section's goal is to provide the most accurate and current information possible. Map data is compiled from various sources and may not be 100% accurate. Users are encouraged to verify critical information. This map is for informational purposes only and is not intended to be used as a legal document. The information shown on this map was last updated in April 2024.

COPIES OF THIS MAP ARE AVAILABLE TO THE PUBLIC AT NO CHARGE. FOR MORE INFORMATION, CONTACT US AT: (828) 338-2200 OR WWW.NCDEPARTMENTOFTRANSPORTATION.COM



LEGEND

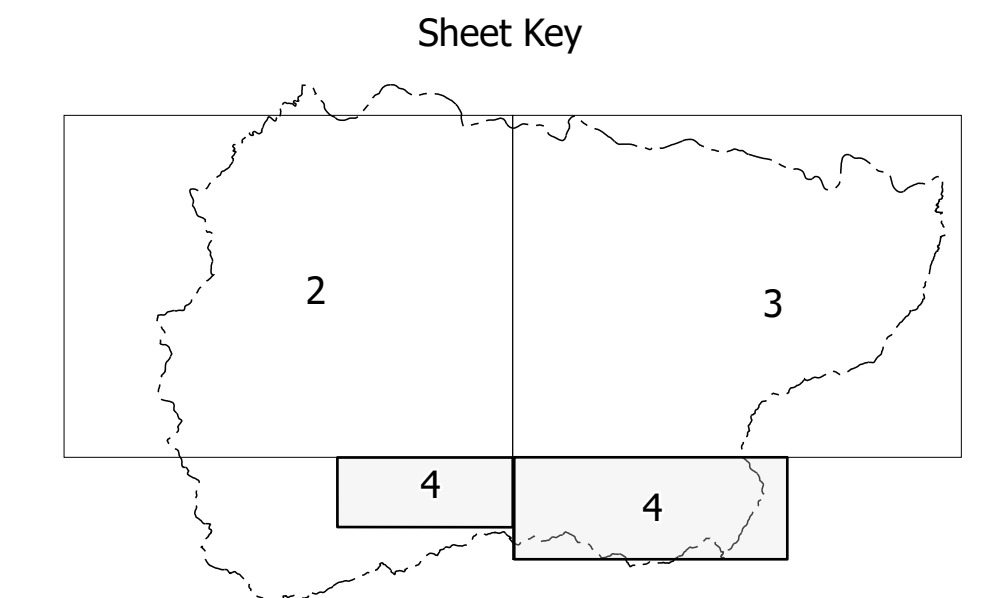
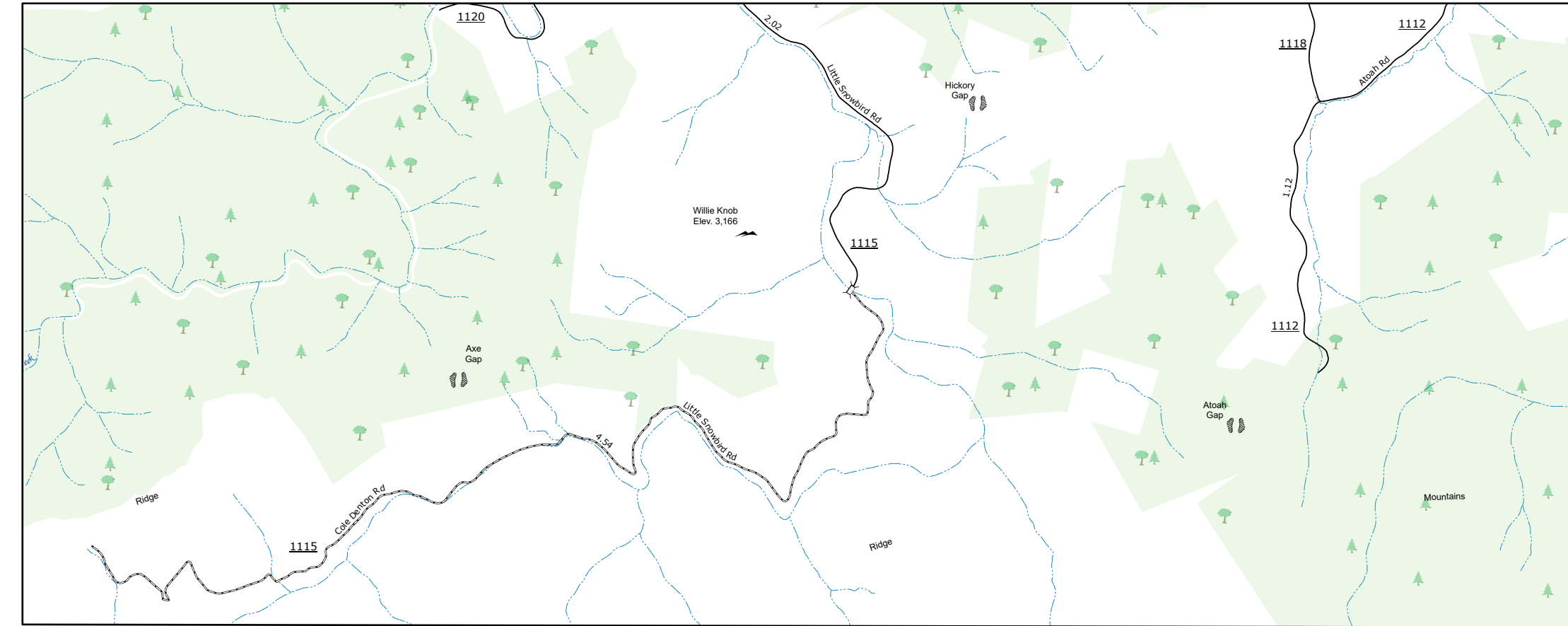
	INTERSTATE		US HIGHWAY		NC STATE ROUTE		DECODED HIGHWAY		UNDECODED HIGHWAY
	BLUE RIDGE PARKWAY		HARD SURFACED ROAD		NON-SYSTEM ROAD		PROFESSIONAL SURVEY ROAD		PROPRIETARY LOCATION
	INTERCHANGE		STANDARD ROAD BRIDGE		RAILROAD BRIDGE		DRAW SPAN ON BRIDGE		PEDESTRIAN WALKWAY
	RAILROAD UNDERPASS		VEHICLE UNDERPASS		TUNNEL		TUNNEL		TUNNEL
	UTILITY		UTILITY		UTILITY		UTILITY		UTILITY
	INTERSTATE HIGHWAY		U.S. NUMBERED HIGHWAY		U.S. NUMBERED HIGHWAY		U.S. NUMBERED BICYCLE ROUTE		INTERCHANGE INTERCHANGE NUMBER
	SECONDARY ROAD NUMBER		UTILITY LINES		RAILROAD LINE		RAILROAD STATION		EAST AREA
	STATE LINE		COUNTY LINE		CITY LINE		FERRY ROUTE		NARROW CREEK OR STREAM
	WIDE RIVER OR CREEK		RESERVOIR, POND OR LAKE W/ ISLAND		DAM OR DAM WITH WATER LAKE		WATERFALL		SWAMP
	COMMUNITY, TOWN OR CITY CENTER		COUNTY SEAT		SCHOOL		COLLEGE OR UNIVERSITY		HOSPITAL
	COURT OF APPEALS		POST OFFICE		FIRE STATION		POLICE STATION		CORRECTIONAL OR PENAL INSTITUTION
	QUARRY		HIGHWAY GARAGE OR MAINT. YARD		HIGHWAY DIST. OR DIST. OFFICE		MILITARY POST		WRECK STATION
	HISTORICAL SITE		POINT OF INTEREST		STATE FOREST		SOUTHWEST		MOUNTAIN SUMMIT
	OVERLOOK		REST AREA		VISITOR CTR. REST AREA		WILD GAME CTR. REST AREA		AIRPORT
	MILITARY AIRPORT		HELIPAD		NATIONAL, STATE FOREST BOUNDARY		WILDLIFE REFUGE		NATIONAL, STATE PARK BOUNDARY
	GAME LANDS BOUNDARY		MILITARY RESERVATION BOUNDARY		INDIAN RESERVATION BOUNDARY				

GRAHAM COUNTY
 NORTH CAROLINA

PREPARED BY THE
 NORTH CAROLINA DEPARTMENT OF TRANSPORTATION
 OPERATIONS PROGRAM MANAGEMENT UNIT - MAPPING SECTION
 IN COOPERATION WITH THE
 U.S. DEPARTMENT OF TRANSPORTATION
 FEDERAL HIGHWAY ADMINISTRATION

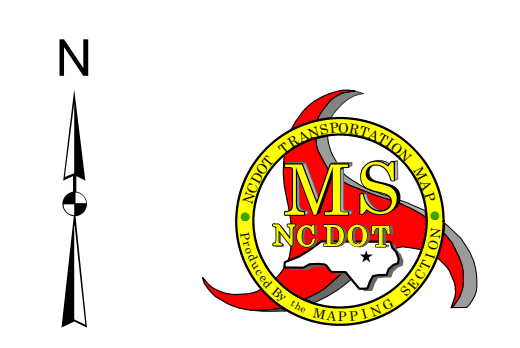
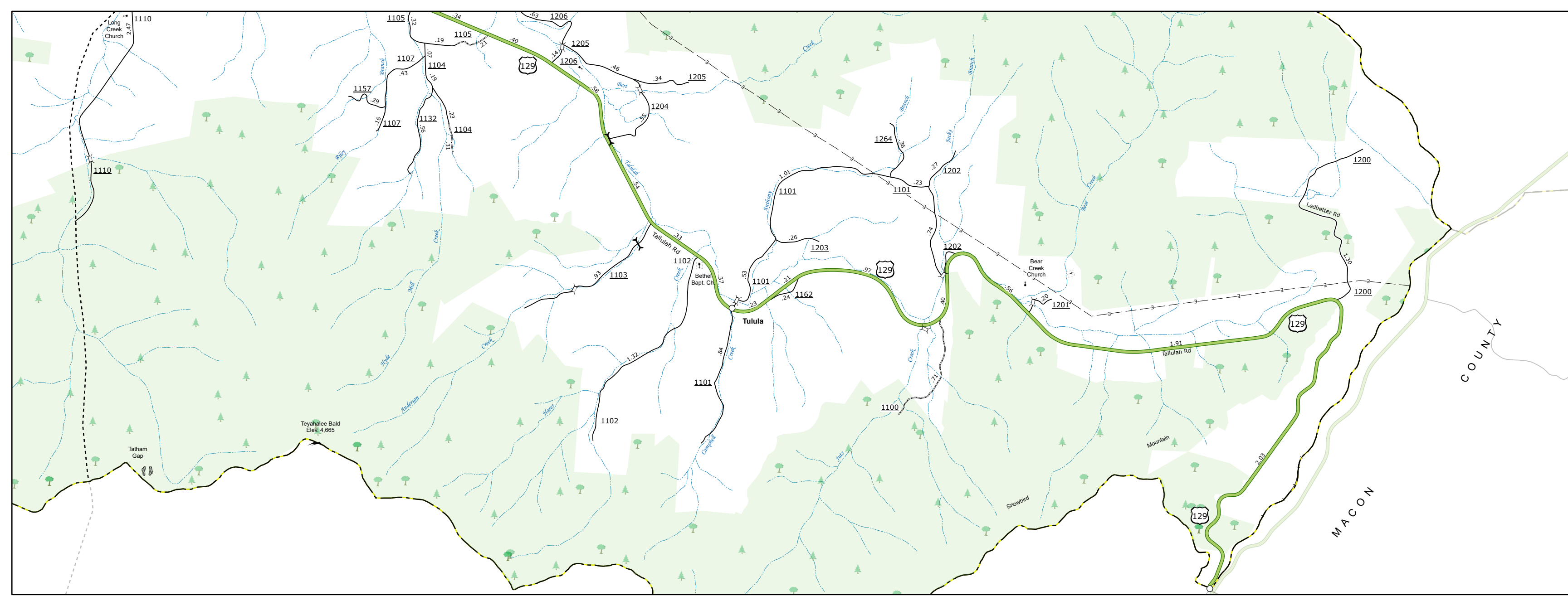
SCALE

NORTH CAROLINA PLANE COORDINATE SYSTEM
 LAMBERT CONFORMAL CONIC PROJECTION



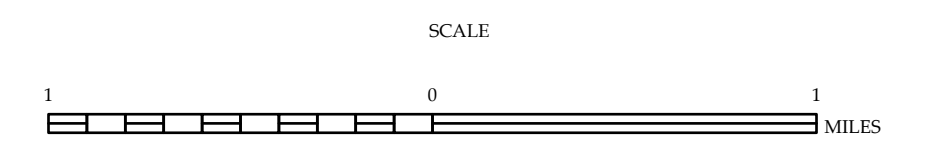
LEGEND

- INTERSTATE US / SC / Undeveloped Hwy
- BLUES RIDGE PARKWAY / Undeveloped Hwy
- UNPAVED SELECTED ROAD
- PAVED SELECTED ROAD
- NON-SELECTED ROAD
- PROFESSIONALLY DRAWN ROAD
- PROTECTED LOCATION
- INTERSECTION DISTANCE
- STANDARD ROAD BRIDGE
- RAILROAD BRIDGE
- DECK BRIDGE
- PEDESTRIAN BRIDGE
- PEDESTRIAN WALKWAY
- PEDESTRIAN UNDERPASS
- VEHICULAR UNDERPASS
- TUNNEL
- CLIMATE
- POPS
- INTERSTATE HIGHWAY
- U.S. NUMBERED HIGHWAY
- N.C. NUMBERED HIGHWAY
- N.C. NUMBERED BIWAYLE ROUTE
- N.C. NUMBERED WYLE ROUTE
- INTERSTATE INTERCHANGE NUMBER
- SECONDARY ROAD NUMBER
- SECONDARY ROAD NUMBER
- TRILEVE BRIDGE
- RAILROAD LINE
- RAILROAD STATION
- POST AREA
- STATE LINE
- COUNTY LINE
- CITY LIMITS
- FERRY ROUTE
- NARROW CREEK OR STREAM
- NARROW RIVER OR CREEK
- RESERVOIR, POND OR LAKE W/ ISLAND
- DAM OR DAM WITH ISLAND
- WATERFALL
- SWAMP
- COMMUNITY, TOWN OR CITY CENTER
- COUNTY SEAT
- SCHOOL
- COLLEGE OR UNIVERSITY
- HOSPITAL
- CONST. GUARD STATION
- CHURCH
- CHURCH WITH CEMETERY
- CEMETERY
- PUBLIC STATION
- CORRECTION OR PENAL INSTITUTION
- QUARRY
- MINE OR PIT
- HIGHWAY GARAGE OR MAINT. YARD
- ROADWAY DEV. OR DIST. OFFICE
- MILITARY POST
- REGULATORY STATION
- FABRIK BOUNDARY
- RECREATIONAL SITE
- POINTS OF INTEREST
- STATE FOREST
- LIGHTHOUSE
- MOUNTAIN SUMMIT
- OVERLEAF
- REST AREA
- NATIONAL FOREST AREA
- WELCOME CENTER AREA
- AIRPORT
- MILITARY AIRPORT
- MILITARY
- NATIONAL STATE FOREST BOUNDARY
- WILDLIFE REFUGE
- NATIONAL STATE PARK BOUNDARY
- GAME LAND BOUNDARY
- MILITARY RESERVATION BOUNDARY
- INDIAN RESERVATION BOUNDARY



GRAHAM COUNTY NORTH CAROLINA

PREPARED BY THE
NORTH CAROLINA DEPARTMENT OF TRANSPORTATION
OPERATIONS PROGRAM MANAGEMENT UNIT - MAPPING SECTION
IN COOPERATION WITH THE
U.S. DEPARTMENT OF TRANSPORTATION
FEDERAL HIGHWAY ADMINISTRATION



NORTH CAROLINA PLANE COORDINATE SYSTEM
LAMBERT CONFORMAL CONIC PROJECTION

COPIES OF THIS MAP ARE AVAILABLE TO THE
PUBLIC AT NOMINAL COST. CONTACT US TO ORDER:
MappingSupport@ndot.gov
https://connect.ncdot.gov/resources/State/Mapping/Pages/Ordering/Maps.aspx
(919) 834-4480

TERMS OF USE: The Mapping Sector's goal is to provide the most accurate and current information possible. Map data is compiled from numerous sources with varying dates of publication and map accuracy standards. As a result, the accuracy, currency, and completeness of the data provided will vary. The North Carolina Department of Transportation shall not be held liable for any errors in the map data. This map cannot be construed to be a legal document. The information shown on this map was last updated in April 2024. For digital copies of this map or additional map products, visit <https://connect.ncdot.gov/resources/State/Mapping>