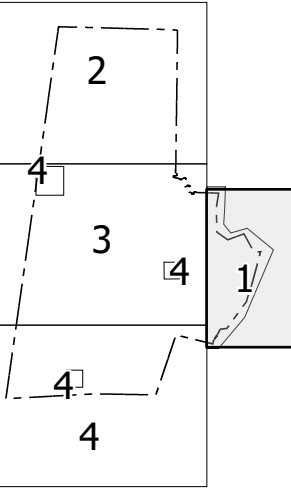
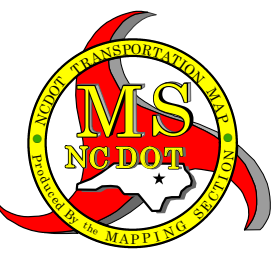
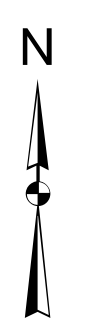


Sheet Key



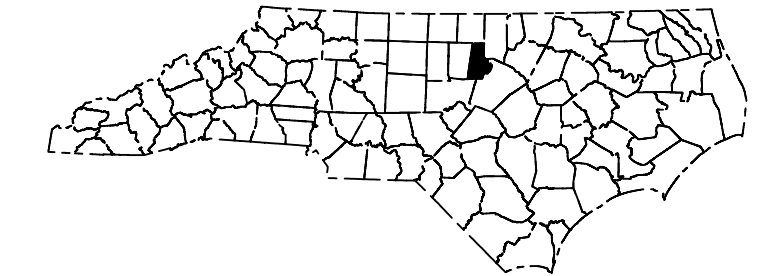
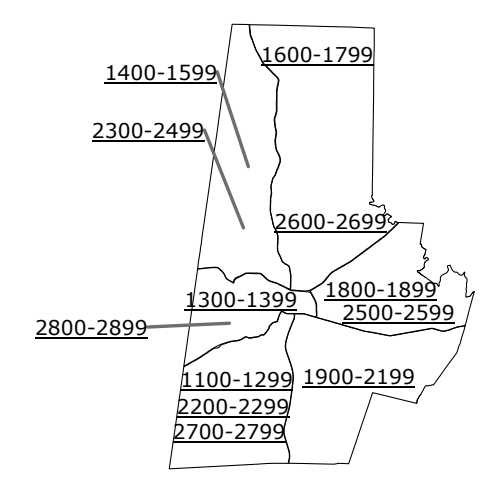
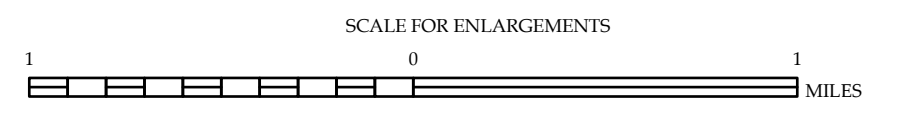
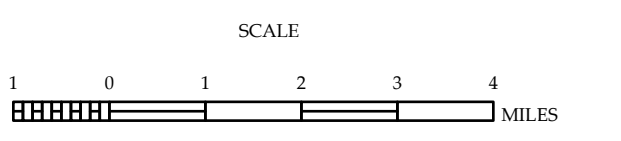
LEGEND

- INTERSTATE US NC
- Divided Hwy
- Undivided Hwy
- BLUE RIDGE PARKWAY
- UNPAVED UNCLASSIFIED ROAD
- HIGHWAY BRIDGE ROAD
- NON-SYSTEM ROAD
- PROPOSED/PLANNED BRIDGE ROAD
- PROTECTED/LOCK-AND
- INTERESTED/BRIDGE
- STANDARD ROAD BRIDGE
- RAILROAD BRIDGE
- IRON-SPAN OVERBRIDGE
- PEDESTRIAN BRIDGE
- PEDESTRIAN UNDERPASS
- VEHICULAR UNDERPASS
- TUNNEL
- CULVERT
- PVE
- INTERSTATE HIGHWAY
- U.S. NUMBERED HIGHWAY
- N.C. NUMBERED HIGHWAY
- U.S. NUMBERED BI-CYCLE ROUTE
- N.C. NUMBERED BI-CYCLE ROUTE
- INTERSTATE INTERCHANGE NUMBER
- SECONDARY ROAD NUMBER
- UTILITY LINES
- RAILROAD LINES
- RAILROAD STATION
- STATE LINE
- COUNTY LINE
- CITY LIMITS
- FERRY ROUTE
- NARROW GULCH OR STREAM
- WIDE RIVER OR CREEK
- BEACH, POOL OR LAKE W/ ISLAND
- DAM OR DAM WITH LOCK
- WATERFALL
- SWAMP
- COMMUNITY, TOWN OR CITY CENTER
- COUNTY SEAT
- SCHOOL
- COLLEGE OR UNIVERSITY
- HOSPITAL
- COAST GUARD STATION
- CHURCH WITH CEMETERY
- CEMETERY
- POLICE STATION
- CORRECTION OR PENAL INSTITUTION
- QUARRY
- MINE OR PIT
- HIGHWAY GARAGE OR MAINT. YARD
- HIGHWAY ID. OR DIST. OFFICE
- MILLAGE PILE
- WEIGH STATION
- FABRICATIONS
- HISTORICAL SITE
- POINTS OF INTEREST
- STATE FOREST
- LIGHTHOUSE
- MONUMENT/SHADE
- OVERLOOK
- REST AREA
- VISITOR CENTER AREA
- WELCOMING CENTER AREA
- AIRPORT
- MILITARY AIRPORT
- HELIPAD
- NATIONAL STATE FOREST BOUNDARY
- WILDLIFE REFUGE
- NATIONAL STATE PARK BOUNDARY
- GAME LANDS BOUNDARY
- MILITARY RESERVATION BOUNDARY
- INDIAN RESERVATION BOUNDARY



DURHAM COUNTY
NORTH CAROLINA

PREPARED BY THE
NORTH CAROLINA DEPARTMENT OF TRANSPORTATION
OPERATIONS PROGRAM MANAGEMENT UNIT - MAPPING SECTION
IN COOPERATION WITH THE
U.S. DEPARTMENT OF TRANSPORTATION
FEDERAL HIGHWAY ADMINISTRATION



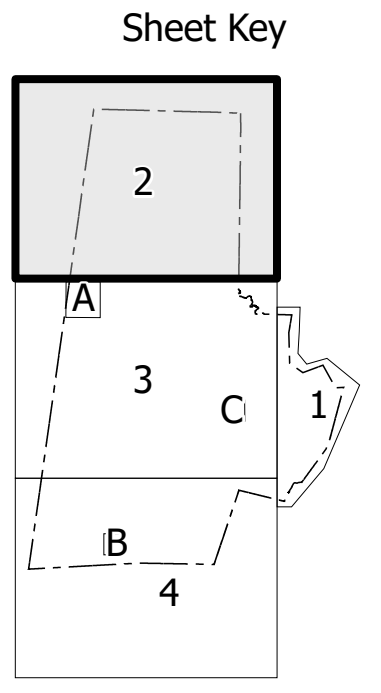
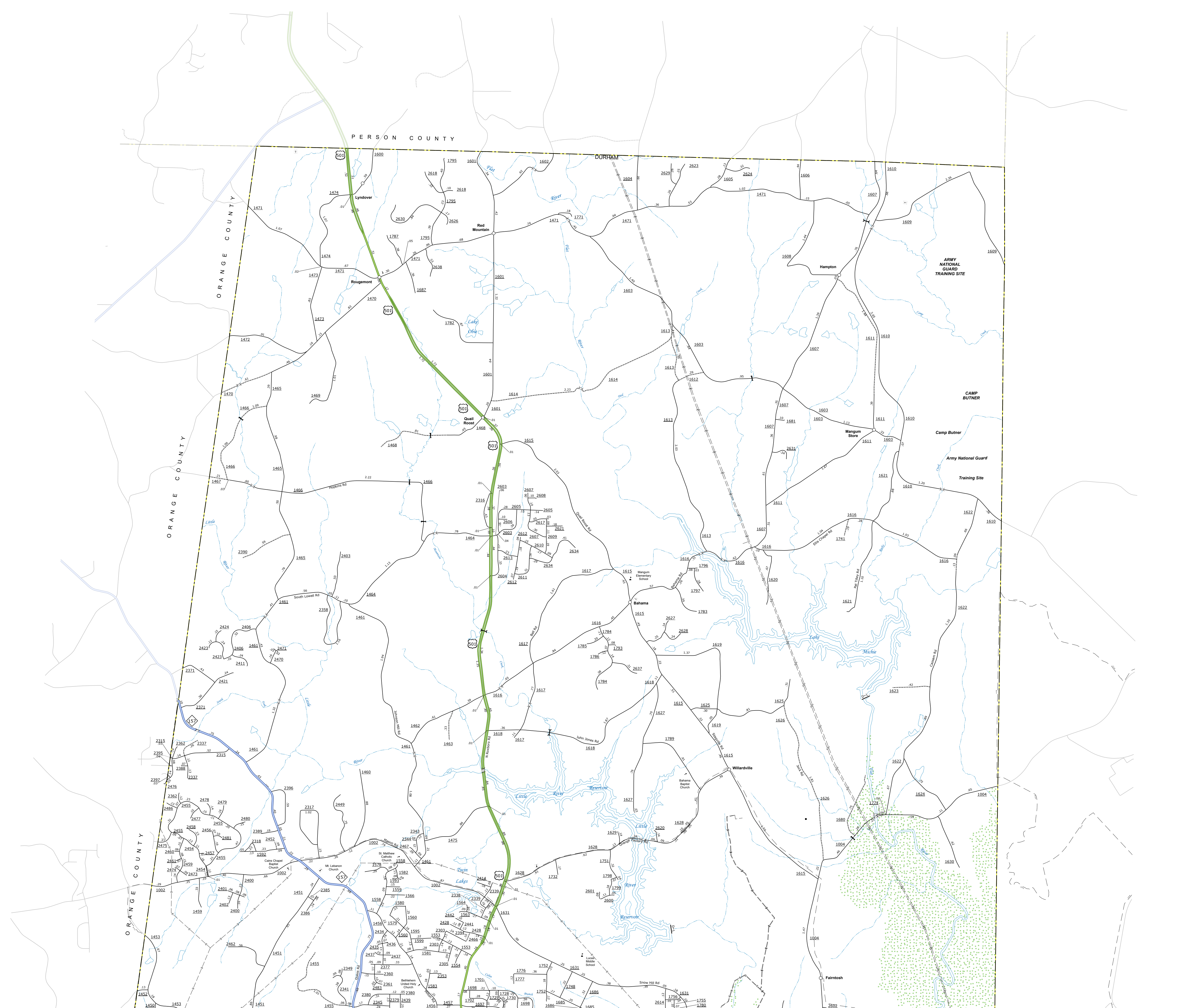
COPIES OF THIS MAP ARE AVAILABLE TO THE PUBLIC AT NOMINAL COST. CONTACT US TO ORDER:
maps.ncdot.gov
<https://connect.ncdot.gov/resources/State-Mapping/Pages/Ordering-Maps.aspx>
(919) 854-8480

TERMS OF USE: The Mapping Section's goal is to provide the most accurate and current information possible. Map data is compiled from numerous sources with varying dates of publication and map accuracy standards. As a result, the accuracy, currency, and completeness of the data provided will vary. The North Carolina Department of Transportation shall not be held liable for any errors in the map data. This map cannot be construed to be a legal document. The information shown on this map was last updated by April 2024.
For digital copies of this map or additional map products, visit <https://connect.ncdot.gov/resources/State-Mapping>

NORTH CAROLINA PLANE COORDINATE SYSTEM
LAMBERT CONFORMAL CONIC PROJECTION

TERMS OF USE: The Mapping Section's goal is to provide the most accurate and current information possible. Map data is compiled from numerous sources including aerial photography, ground surveys, and other data. The Mapping Section is not responsible for errors or omissions on this map. The information shown on this map was last updated in August 2024.

COPIES OF THIS MAP ARE AVAILABLE TO THE PUBLIC AT NO CHARGE. CONTACT US TO OBTAIN: 919.733.3333 OR WWW.NCSTATE.GOV/TRANSPORTATION

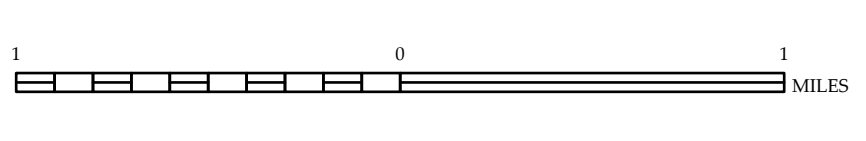


- LEGEND**
- INTERSTATE US NC
 - Blue Ridge Parkway
 - Unimproved Road
 - Hard Surfaced Road
 - Non-System Road
 - Professionally Drawn Road
 - Project Location
 - Interchange
 - Standard Road Bridge
 - Draw Span Bridge
 - Footpath Underpass
 - Vehicle Underpass
 - Tunnel
 - Utility
 - Interstate Highway
 - U.S. Numbered Highway
 - U.S. Numbered Bicycle Route
 - N.C. Numbered Bicycle Route
 - Interchange
 - Secondary Road Number
 - Utility Lines
 - Railroad Line
 - Railroad Station
 - Post Office
 - State Line
 - County Line
 - City Line
 - Ferry Route
 - Narrow Creek or Stream
 - Wide River or Creek
 - Reservoir, Pond or Lake w/ Island
 - Dam or Dam Water Lake
 - Waterfall
 - Swamp
 - Community, Town or City Center
 - County Seat
 - School
 - College or University
 - Hospital
 - Coast Guard Station
 - Church
 - Church with Cemetery
 - Cemetery
 - Police Station
 - Correctional or Penal Institution
 - Quarry
 - Highway Garage or Maint. Yard
 - Highway Dist. or Dist. Office
 - Military Post
 - Fire Station
 - Fire Department
 - Historical Site
 - Point of Interest
 - State Forest
 - Mountain Summit
 - Overlook
 - Rest Area
 - Visitor Ctr. Rest Area
 - Wildlife Ctr. Rest Area
 - Airport
 - Military Airport
 - Field Post
 - National State Forest Boundary
 - Wildlife Refuge
 - National State Park Boundary
 - Game Lands Boundary
 - Military Reservation Boundary
 - Indian Reservation Boundary

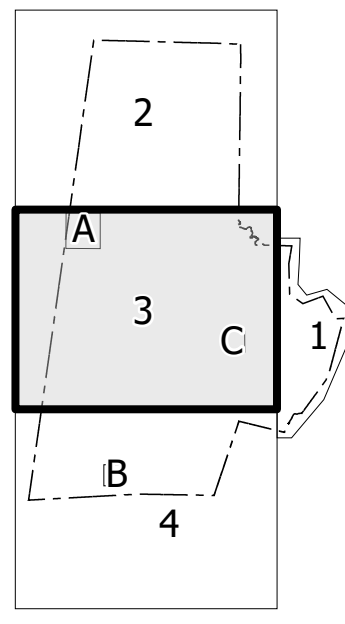


**DURHAM COUNTY
NORTH CAROLINA**

PREPARED BY THE
NORTH CAROLINA DEPARTMENT OF TRANSPORTATION
OPERATIONS PROGRAM MANAGEMENT UNIT - MAPPING SECTION
IN COOPERATION WITH THE
U.S. DEPARTMENT OF TRANSPORTATION
FEDERAL HIGHWAY ADMINISTRATION

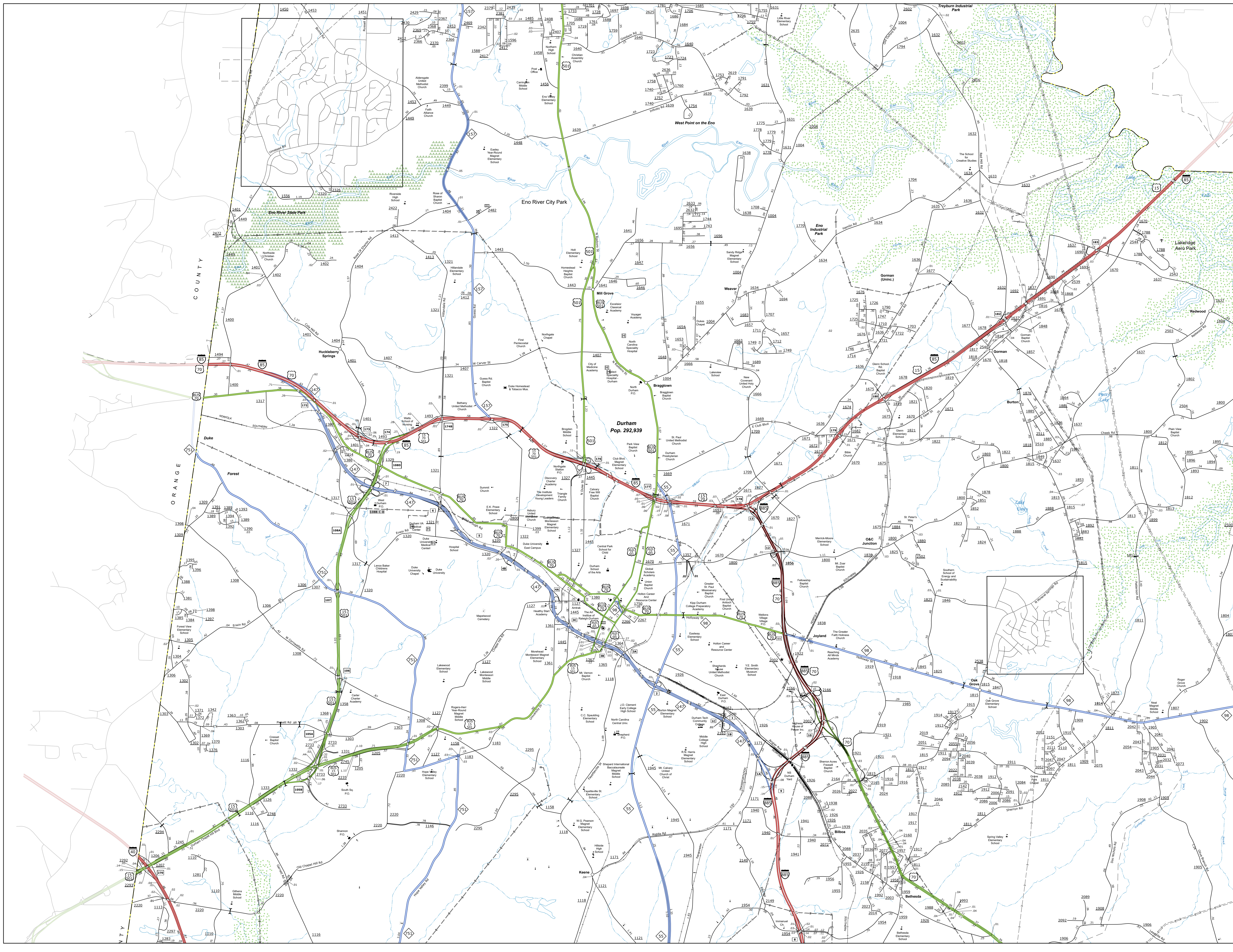


NORTH CAROLINA PLANE COORDINATE SYSTEM
LAMBERT CONFORMAL CONIC PROJECTION



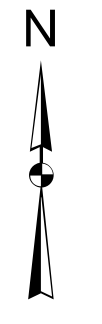
TERMS OF USE: This Map is intended for general informational purposes only. It is not intended for use in any legal proceeding or as a substitute for a professional survey or engineering plan. The user assumes all responsibility for the use of this Map. The information shown on this Map was last updated in April 2024.

COPIES OF THIS MAP ARE AVAILABLE TO THE PUBLIC AT NO CHARGE. CONTACT US TO ORDER: 919.286.2000 OR VISIT OUR WEBSITE AT WWW.DURHAMCOUNTYGOV.COM/TRANSPORTATION



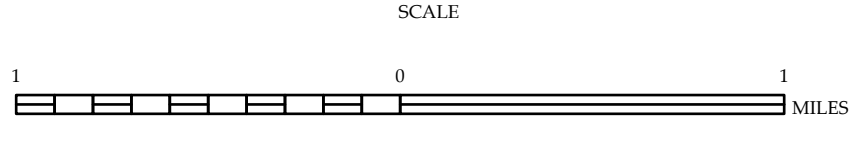
LEGEND

- Legend items including Interstate US, NC, Decided Hwy, Undecided Hwy, Blue Ridge Parkway, etc.



DURHAM COUNTY NORTH CAROLINA

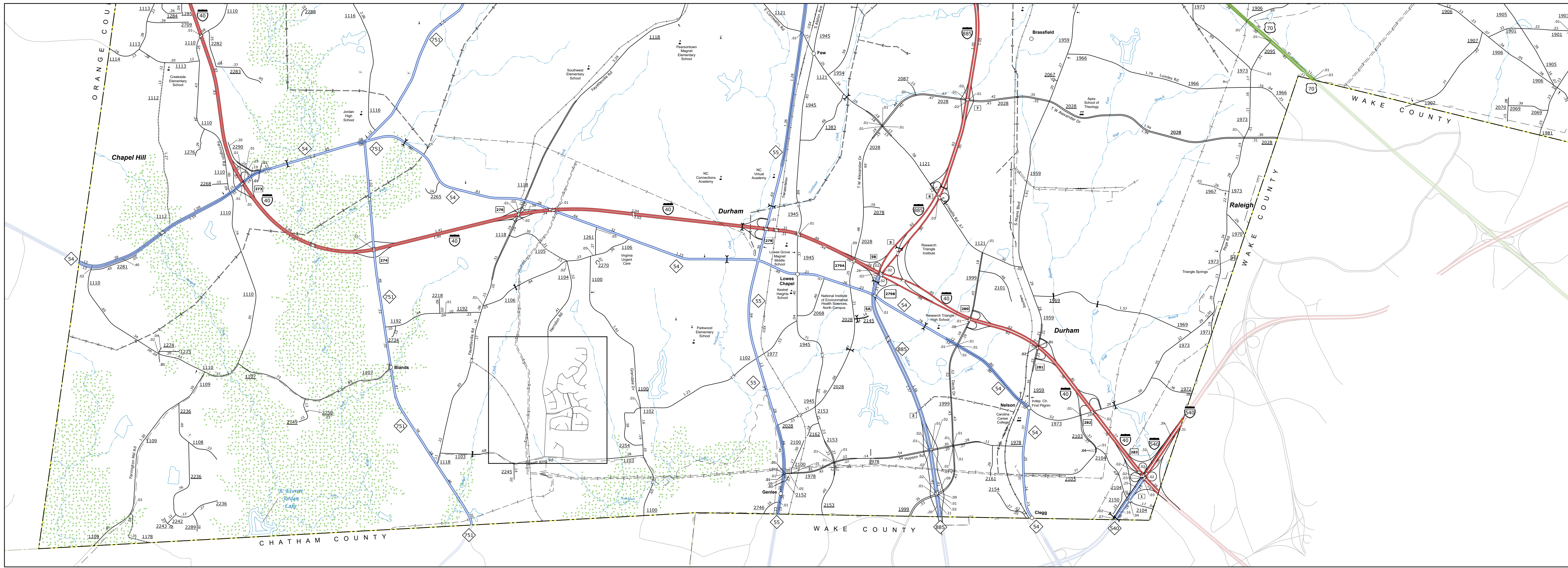
PREPARED BY THE NORTH CAROLINA DEPARTMENT OF TRANSPORTATION OPERATIONS PROGRAM MANAGEMENT UNIT - MAPPING SECTION IN COOPERATION WITH THE U.S. DEPARTMENT OF TRANSPORTATION FEDERAL HIGHWAY ADMINISTRATION



NORTH CAROLINA PLANE COORDINATE SYSTEM LAMBERT CONFORMAL CONIC PROJECTION

TERMS OF USE: This Mapping Section's goal is to provide the most accurate and current information possible. Map data is compiled from the data provided to us by the North Carolina Department of Transportation and other sources. We do not warrant the accuracy of the information provided. The North Carolina Department of Transportation and other sources are not liable for any errors or omissions on this map. This map is for informational purposes only. For digital copies of this map or additional map products, visit <http://www.ncdot.gov>.

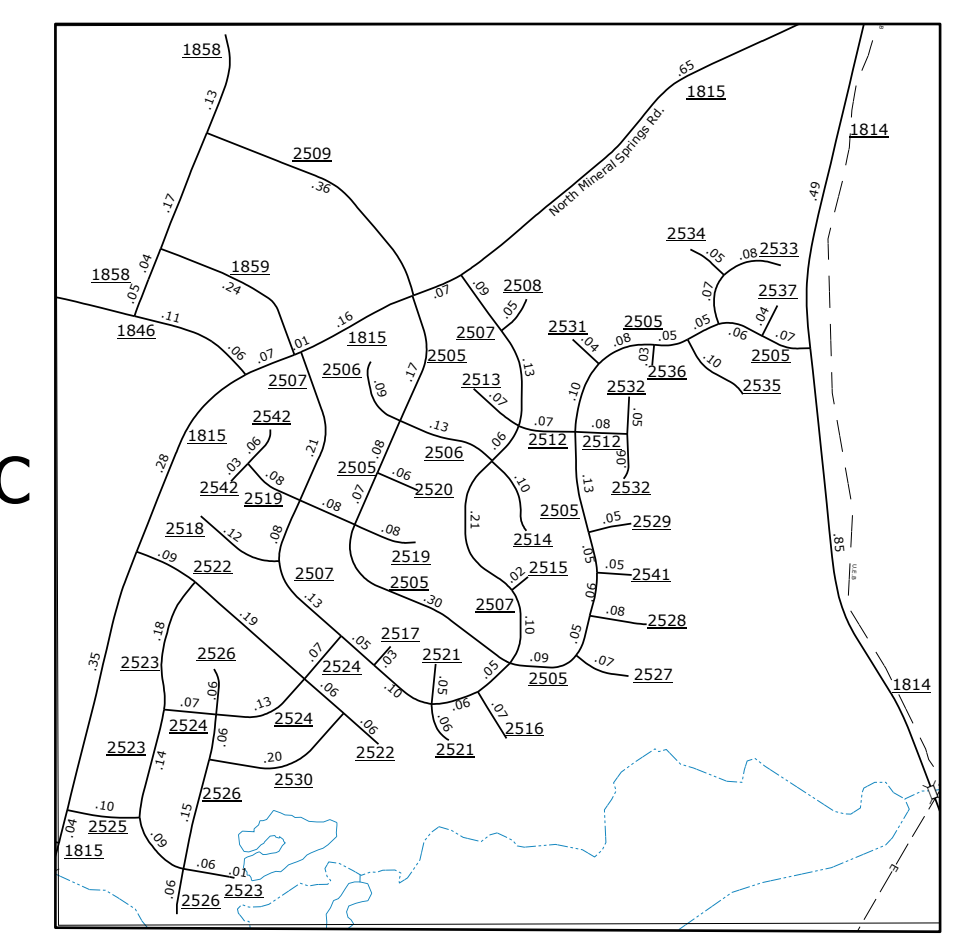
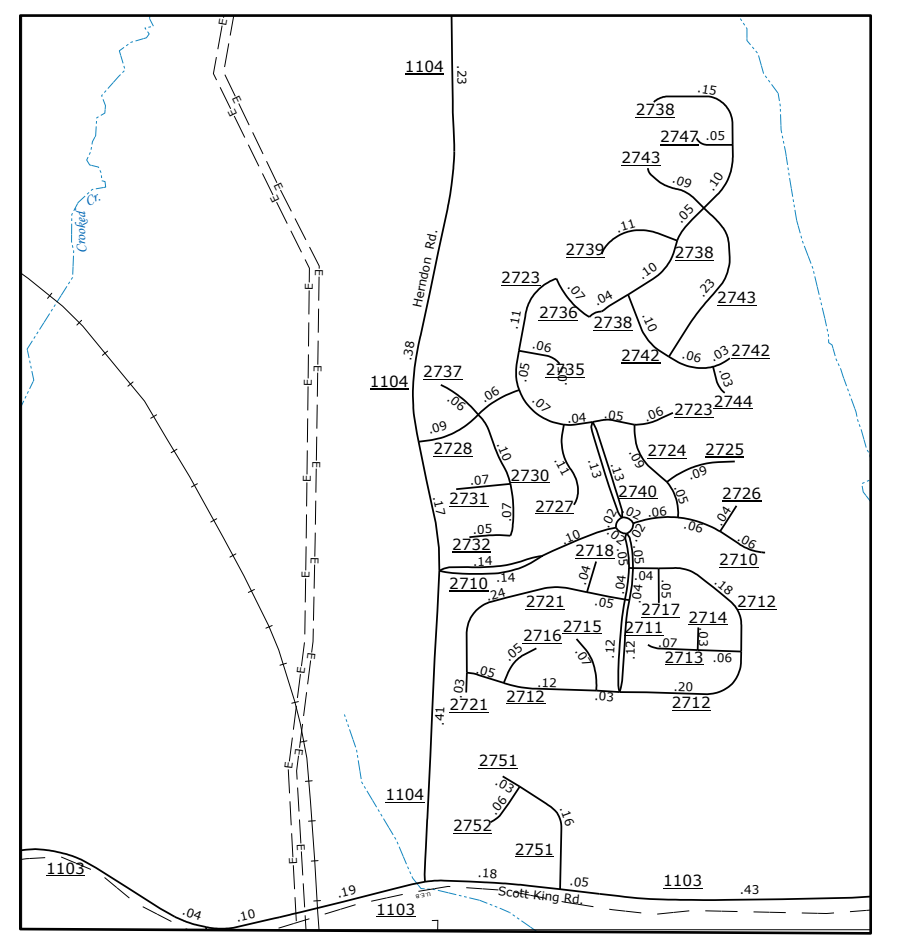
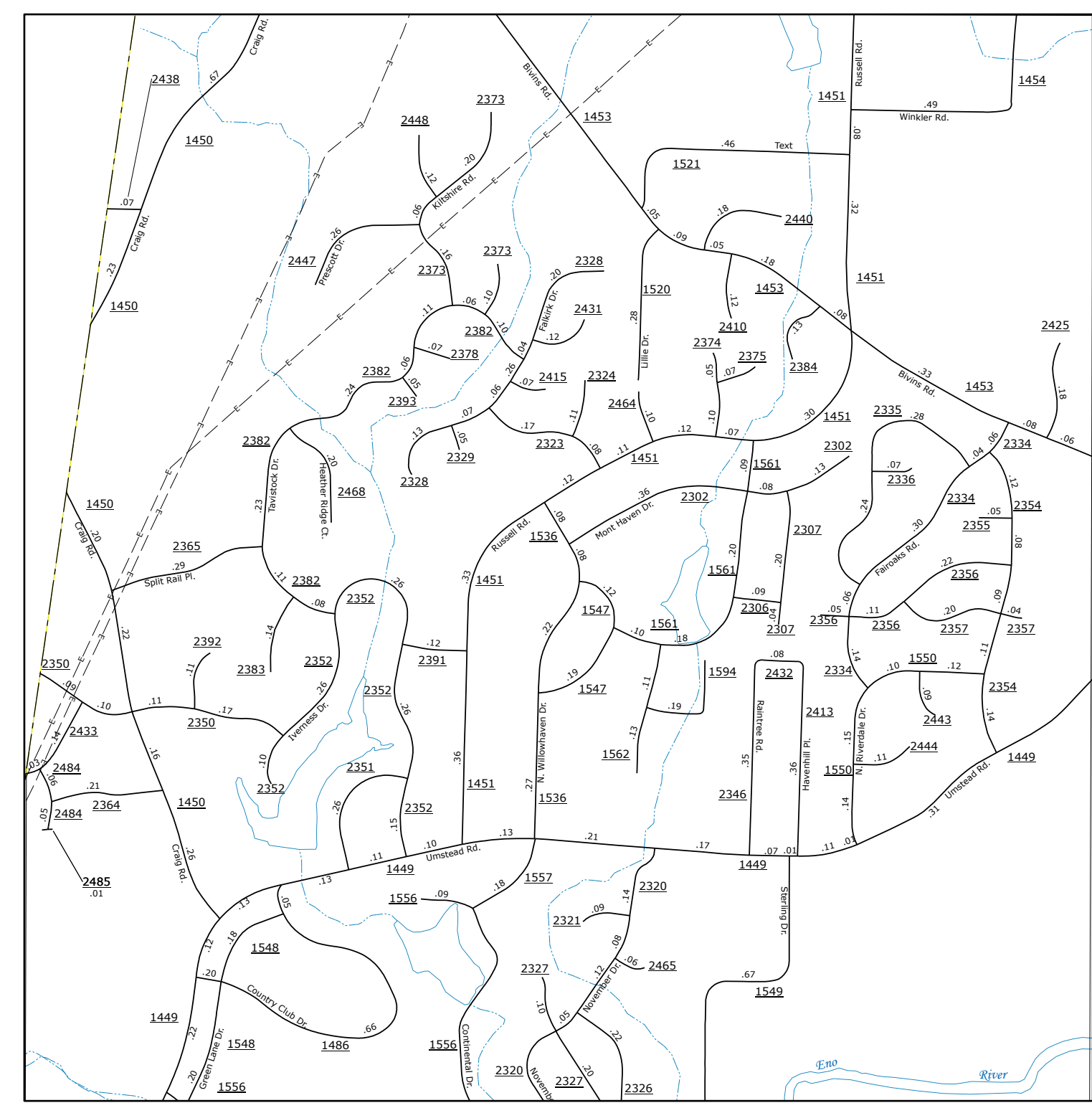
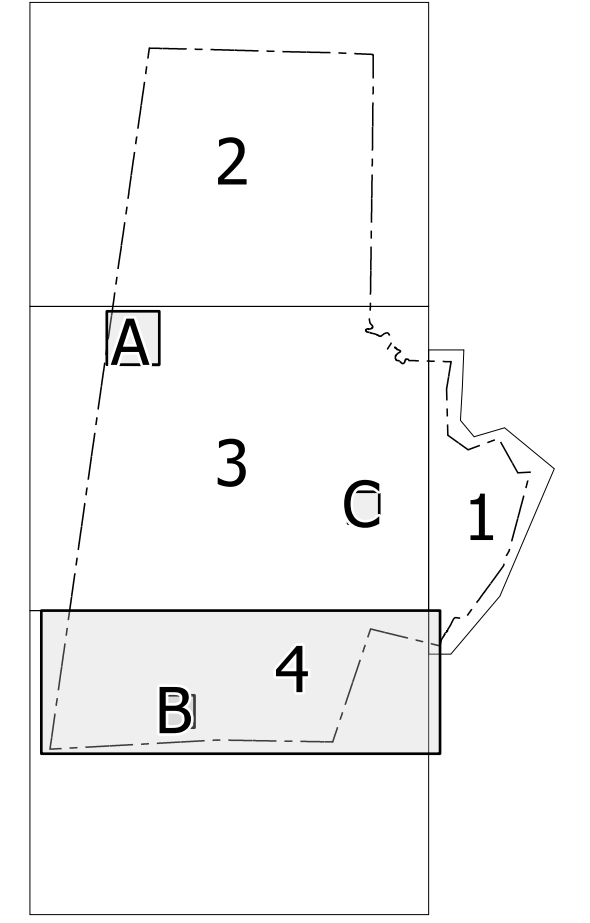
COPIES OF THIS MAP ARE AVAILABLE TO THE PUBLIC. CONTACT US TO ORDER: maps@ncdot.gov OR [919-872-4444](tel:919-872-4444).



LEGEND

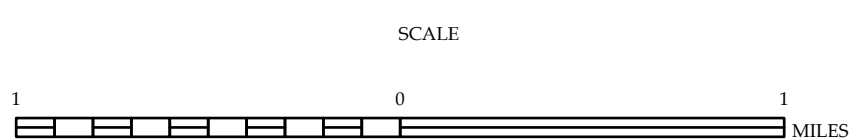
- INTERSTATE US NC
- BLUE RIDGE PARKWAY
- UNDERSIDE HWY
- DISCOURAGED GRAVEL ROAD
- HARD SURFACED ROAD
- PROFESSIONALLY SURVEYED ROAD
- NON-SYSTEM ROAD
- PROPOSED LOCATION
- INTERSECTION BREAK
- STANDARD ROAD BRIDGE
- RAILROAD BRIDGE
- DRAW SPAN ON BRIDGE
- PIEDMONT BRIDGE
- PIEDMONT WALKWAY
- STEEL GIRDER UNDERPASS
- TUNNEL
- FLUYERT
- RAILROAD
- INTERSTATE HIGHWAY
- U.S. NUMBERED HIGHWAY
- U.S. NUMBERED HIGHWAY
- U.S. NUMBERED BI-CYCLE ROUTE
- U.S. NUMBERED BI-CYCLE ROUTE
- INTERSTATE INTERCHANGE NUMBER
- SECONDARY ROAD NUMBER
- UTILITY LINES
- RAILROAD LINE
- RAILROAD STATION
- POST AREA
- STATE LINE
- COUNTY LINE
- CITY LIMITS
- FERRY ROUTE
- NARROW CREEK OR STREAM
- WIDE RIVER OR CREEK
- RESERVOIR, POND OR LAKE W/ ISLAND
- DAM OR DAM WATER LACK
- WATERFALL
- SWAMP
- COMMUNITY TOWN OR CITY CENTER
- COUNTY SEAT
- SCHOOL
- COLLEGE OR UNIVERSITY
- HOSPITAL
- COAST GUARD STATION
- CHURCH
- CHURCH WITH CEMETERY
- CEMETERY
- PARK STATION
- CORRECTION OR PENAL INSTITUTION
- QUARRY
- HOUSING OR PUE
- HIGHWAY GARAGE OR MAINT. YARD
- HIGHWAY DIST. OR DIST. OFFICE
- MILITARY POST
- WATER STATION
- FARGO STATION
- HISTORICAL SITE
- PRIORITY OF INTEREST
- STATE FOREST
- SOUTH FORK
- INDIAN SUMMIT
- OVERLOOK
- REST AREA
- WINDOR CTR. REST AREA
- WILDCAM CTR. REST AREA
- AIRPORT
- MILITARY AIRPORT
- FIELDPOST
- NATIONAL STATE FOREST BOUNDARY
- WILDLIFE REFUGE
- NATIONAL STATE PARK BOUNDARY
- GAME LANDS BOUNDARY
- MILITARY RESERVATION BOUNDARY
- INDIAN RESERVATION BOUNDARY

Sheet Key



DURHAM COUNTY NORTH CAROLINA

PREPARED BY THE
NORTH CAROLINA DEPARTMENT OF TRANSPORTATION
OPERATIONS PROGRAM MANAGEMENT UNIT - MAPPING SECTION
IN COOPERATION WITH THE
U.S. DEPARTMENT OF TRANSPORTATION
FEDERAL HIGHWAY ADMINISTRATION



NORTH CAROLINA PLANE COORDINATE SYSTEM
LAMBERT CONFORMAL CONIC PROJECTION

