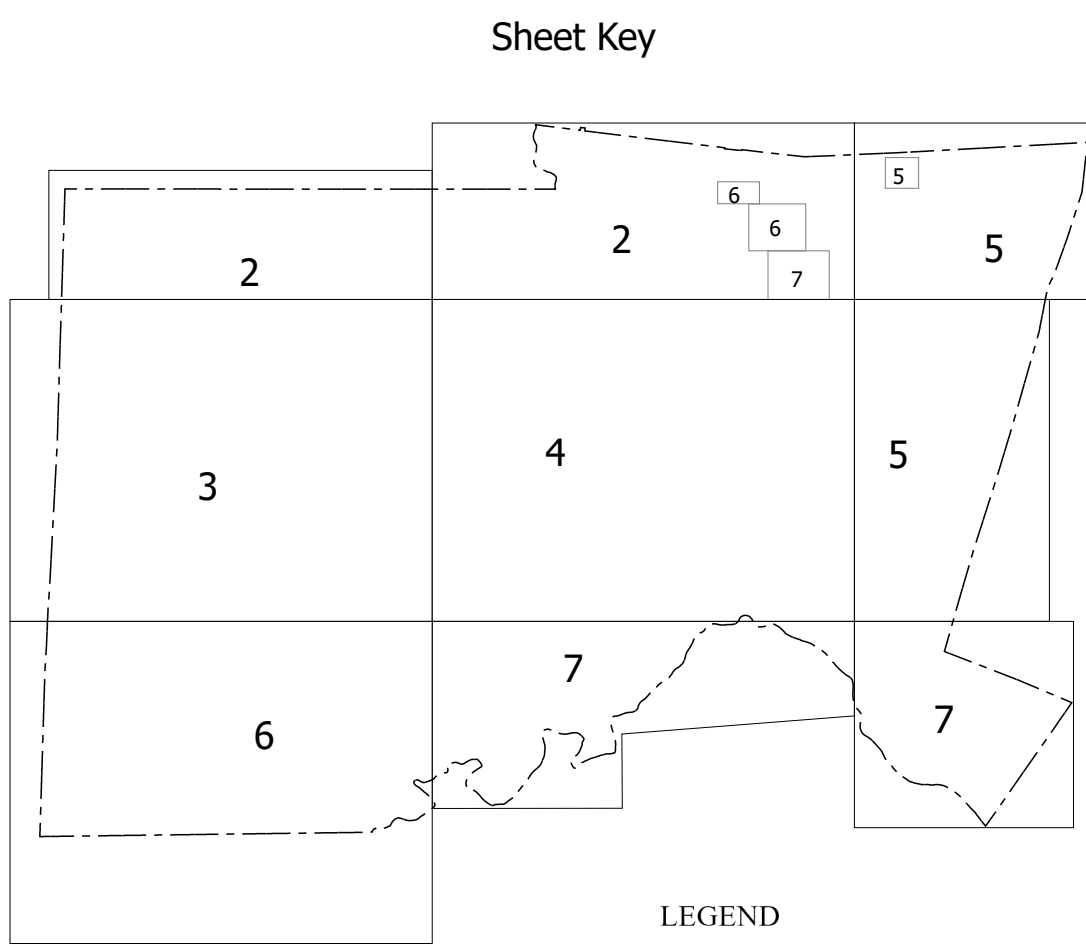
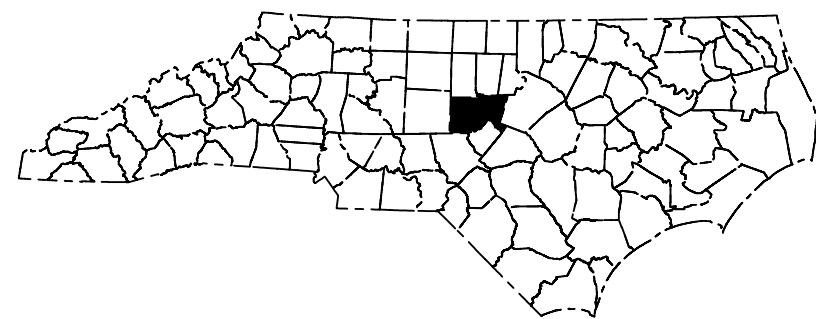
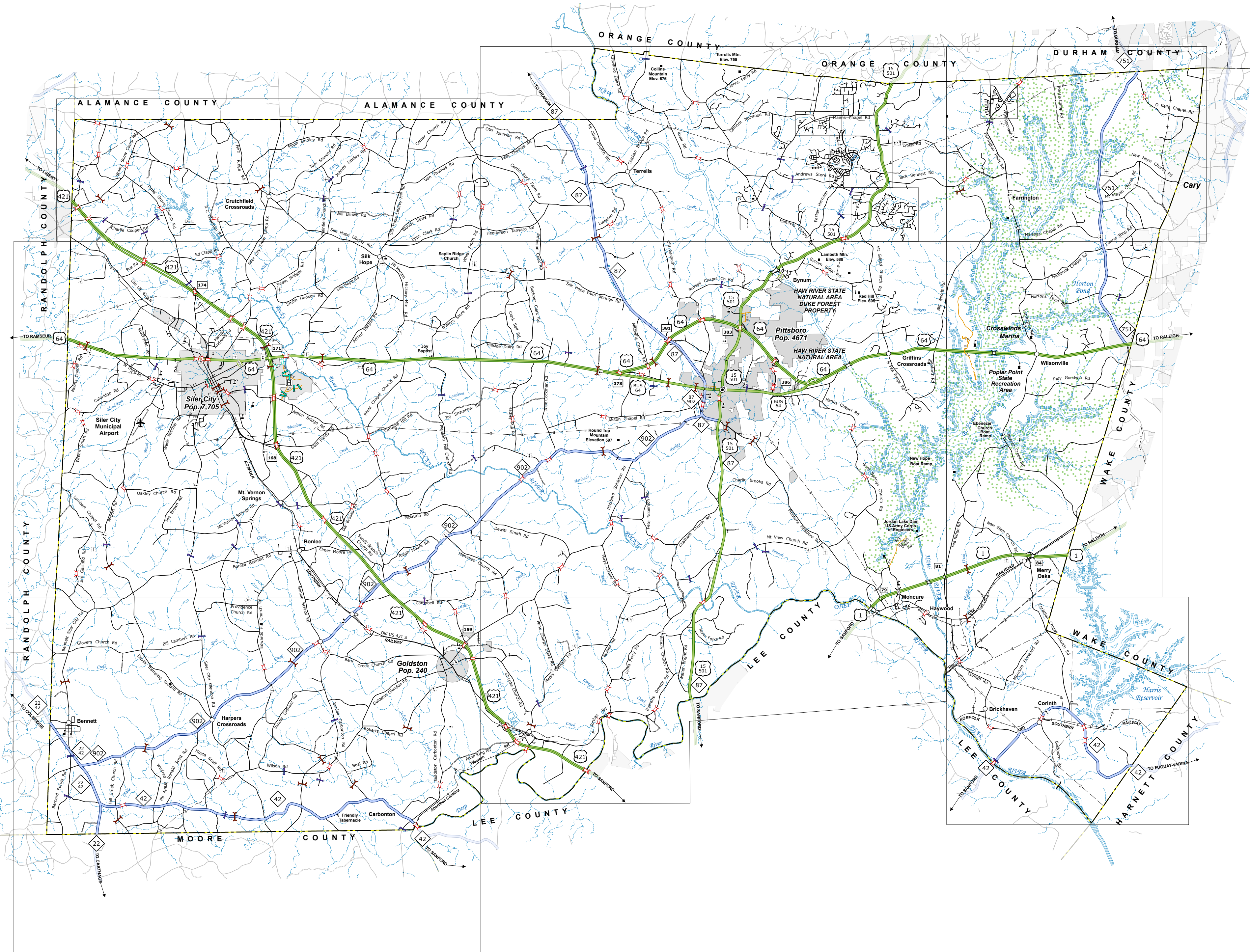


TRAFFIC TO USE: The Mapmaker's Office is not responsible for any errors or omissions in the data or for any damage or loss resulting from the use of the map. The information shown on this map is for informational purposes only and should not be used as a basis for any legal action. The information shown on this map is for informational purposes only and should not be used as a basis for any legal action.

COPYRIGHT: This map is available to the public at nominal cost. Contact us to order. The information shown on this map is for informational purposes only and should not be used as a basis for any legal action.



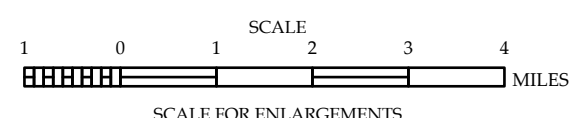
LEGEND

- INTERSTATE US NC Divided Hwy Undivided Hwy
- BLUE RIDGE PARKWAY
- UNPAVED SURFACED ROAD
- HARD SURFACED ROAD
- PROVISIONALLY DRAWN ROAD
- PROJECTED LOCATION
- INTERSECTION DISTANCE
- STANDARD ROAD BRIDGE
- RAILROAD BRIDGE
- DRAW SPAN ON BRIDGE
- PEDESTRIAN BRIDGE
- PEDESTRIAN WALKWAY
- PEDESTRIAN UNDERPASS
- VEHICULAR UNDERPASS
- TUNNEL
- CULVERT
- PIPE
- INTERSTATE HIGHWAY
- U.S. NUMBERED HIGHWAY
- N.C. NUMBERED HIGHWAY
- U.S. NUMBERED BICYCLE ROUTE
- N.C. NUMBERED BICYCLE ROUTE
- INTERSTATE INTERCHANGE NUMBER
- SECONDARY ROAD NUMBER
- UTILITY LINES
- RAILROAD LINE
- RAILROAD STATION
- INSET AREA
- STATE LINE
- COUNTY LINE
- SMOOTHED URBAN BOUNDARIES
- CITY LIMITS
- FERRY ROUTE AND RAMP
- NARROW CREEK OR STREAM
- WIDE RIVER OR CREEK
- RESERVOIR, POND OR LAKE W/ ISLAND
- DAM OR DAM WITH LOCK
- WATERFALL
- SWAMP
- COMMUNITY
- COUNTY SEAT
- SCHOOL
- COLLEGE OR UNIVERSITY
- HOSPITAL
- COAST GUARD STATION
- CHURCH
- CHURCH WITH CEMETERY
- CEMETERY
- PATROL STATION
- CORRECTION OR PENAL INSTITUTION
- QUARRY
- MINE OR PIT
- HIGHWAY GARAGE OR MAINT. YARD
- HIGHWAY DIV. OR DIST. OFFICE
- MILITARY POST
- WEIGH STATION
- FAIRGROUNDS
- HISTORICAL SITE
- POINTS OF INTEREST
- POST OFFICE
- STATE FOREST
- LIGHTHOUSE
- MOUNTAIN SUMMIT
- MOUNTAIN GAP
- OVERLOOK
- REST AREA
- VISITOR CTR/REST AREA
- WELCOME CTR/REST AREA
- AIRPORT
- MILITARY AIRPORT

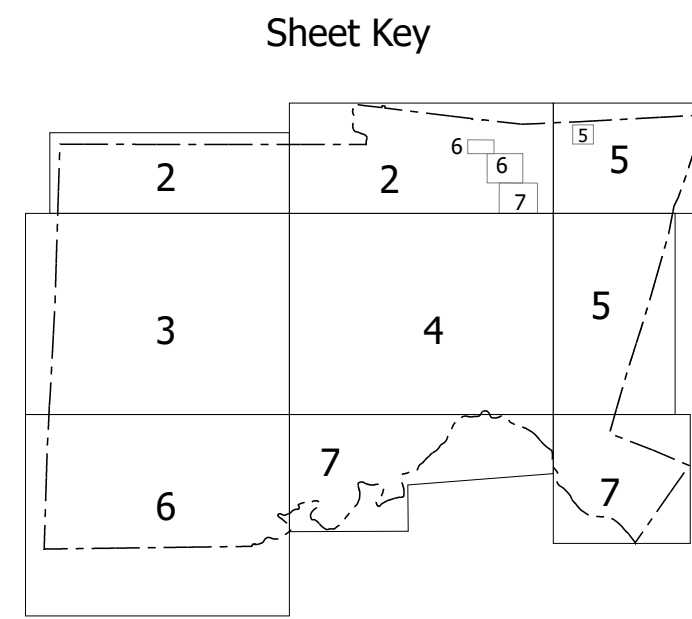
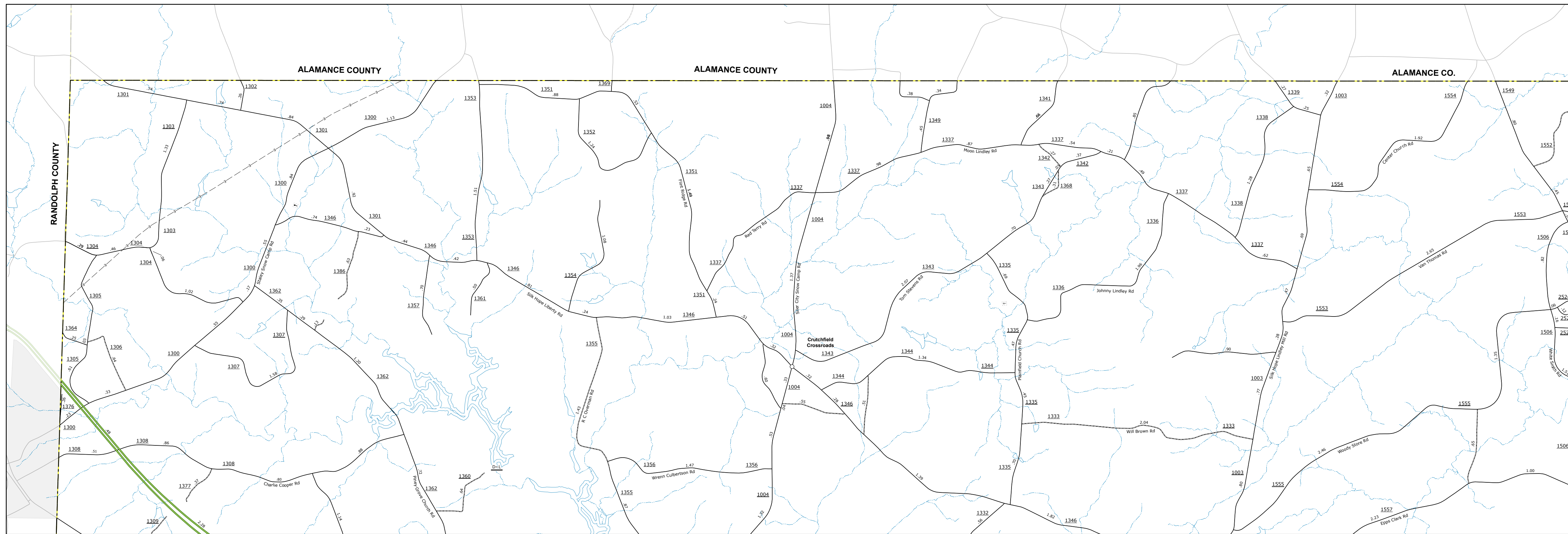


CHATHAM COUNTY
NORTH CAROLINA

PREPARED BY THE
NORTH CAROLINA DEPARTMENT OF TRANSPORTATION
OPERATIONS PROGRAM MANAGEMENT UNIT - MAPPING SECTION
IN COOPERATION WITH THE
U.S. DEPARTMENT OF TRANSPORTATION
FEDERAL HIGHWAY ADMINISTRATION

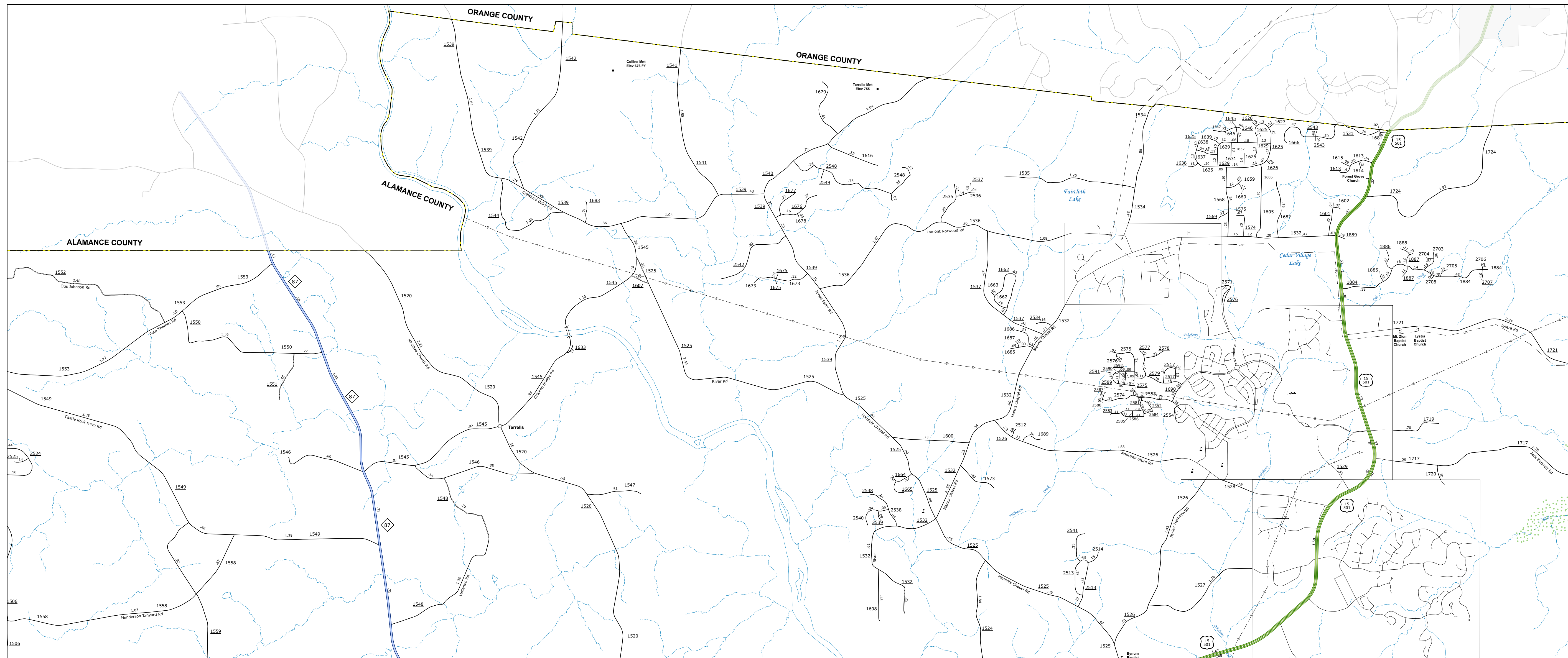


TERMS OF USE: The Mapping Section's goal is to provide the most accurate and current information possible. Map data is compiled from numerous sources with varying dates of publication and map accuracy standards. As a result, the accuracy, currency, and completeness of the data provided will vary. The North Carolina Department of Transportation shall not be held liable for any errors in the map data. This map cannot be construed to be a legal document. The information shown on this map was last updated in June 2025. For digital copies of this map or additional map products, visit [this website](https://www.ncdot.gov/resources/State-Mapping/) <https://www.ncdot.gov/resources/State-Mapping/>.



LEGEND

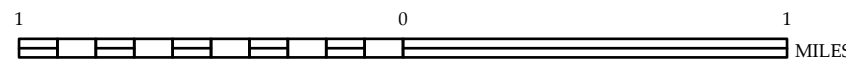
- | | | | | | |
|--|----|--|----|--|-----------------------------------|
| | US | | NC | | Divided Hwy |
| | | | | | Undivided Hwy |
| | | | | | BLUE RIDGE PARKWAY |
| | | | | | UNPAVED SURFACED ROAD |
| | | | | | HARD SURFACED ROAD |
| | | | | | NON-SYSTEM ROAD |
| | | | | | PROVISIONALLY DRAWS ROAD |
| | | | | | PROBING THE LOCATION |
| | | | | | INTERSECTION DISTANCE |
| | | | | | STANDARD ROAD BRIDGE |
| | | | | | RAILROAD BRIDGE |
| | | | | | DEAN SUSAN OR BRIDGE |
| | | | | | PEDESTRIAN BRIDGE |
| | | | | | PEDESTRIAN WALKWAY |
| | | | | | PEDESTRIAN UNDERPASS |
| | | | | | VEHICULAR UNDERPASS |
| | | | | | TUNNEL |
| | | | | | CULVERT |
| | | | | | INTERSTATE HIGHWAY |
| | | | | | U.S. NUMBERED HIGHWAY |
| | | | | | N.C. NUMBERED HIGHWAY |
| | | | | | N.C. NUMBERED BY-CYCLE ROUTE |
| | | | | | N.C. NUMBERED BY-CYCLE ROUTE |
| | | | | | INTERSTATE INTERCHANGE NUMBER |
| | | | | | CONVENTIONAL ROAD NUMBER |
| | | | | | CITY/LINE |
| | | | | | RAILROAD LINE |
| | | | | | RAILROAD STATION |
| | | | | | INSIDE AREA |
| | | | | | STATE LINE |
| | | | | | COUNTY LINE |
| | | | | | SMOOTHED URBAN BOUNDARIES |
| | | | | | CITY LIMITS |
| | | | | | FIBER ROAD OR RAMP |
| | | | | | NARROW OR CREEK OR BANK |
| | | | | | WIDE RIVER OR CREEK |
| | | | | | RESERVOIR, POND OR LAKE W/ ISLAND |
| | | | | | DAM OR DAM WITH LOCK |
| | | | | | NATURAL |
| | | | | | SWAMP |
| | | | | | COMMUNITY |
| | | | | | COUNTY SEAT |
| | | | | | SCHOOL |
| | | | | | VILLAGE OR UNIVERSITY |
| | | | | | HOSPITAL |
| | | | | | COAST GUARD STATION |
| | | | | | CHURCH |
| | | | | | CHURCH WITH CEMETERY |
| | | | | | CEMETERY |
| | | | | | PATROL STATION |
| | | | | | CORRECTION OR PENAL INSTITUTION |
| | | | | | QUARRY |
| | | | | | MINE OR PIT |
| | | | | | HIGHWAY GARAGE OR MAINT. YARD |
| | | | | | HIGHWAY DIV. OR DIST. OFFICE |
| | | | | | MILITARY POST |
| | | | | | WEIGH STATION |
| | | | | | FAIRGROUNDS |
| | | | | | HISTORICAL SITE |
| | | | | | POINTS OF INTEREST |
| | | | | | POST OFFICE |
| | | | | | STATE FOREST |
| | | | | | LIGHTHOUSE |
| | | | | | MOUNTAIN SUMMIT |
| | | | | | MOUNTAIN GAP |
| | | | | | OVERLOOK |
| | | | | | REST AREA |
| | | | | | VISITOR CTR. REST AREA |
| | | | | | WELCOME CTR. REST AREA |
| | | | | | AIRPORT |
| | | | | | MILITARY |
| | | | | | NATIONAL / STATE FOREST BOUNDARY |



CHATHAM COUNTY
NORTH CAROLINA

PREPARED BY THE
NORTH CAROLINA DEPARTMENT OF TRANSPORTATION
OPERATIONS PROGRAM MANAGEMENT UNIT - MAPPING SECTION
IN COOPERATION WITH THE
U.S. DEPARTMENT OF TRANSPORTATION
FEDERAL HIGHWAY ADMINISTRATION

SCALE



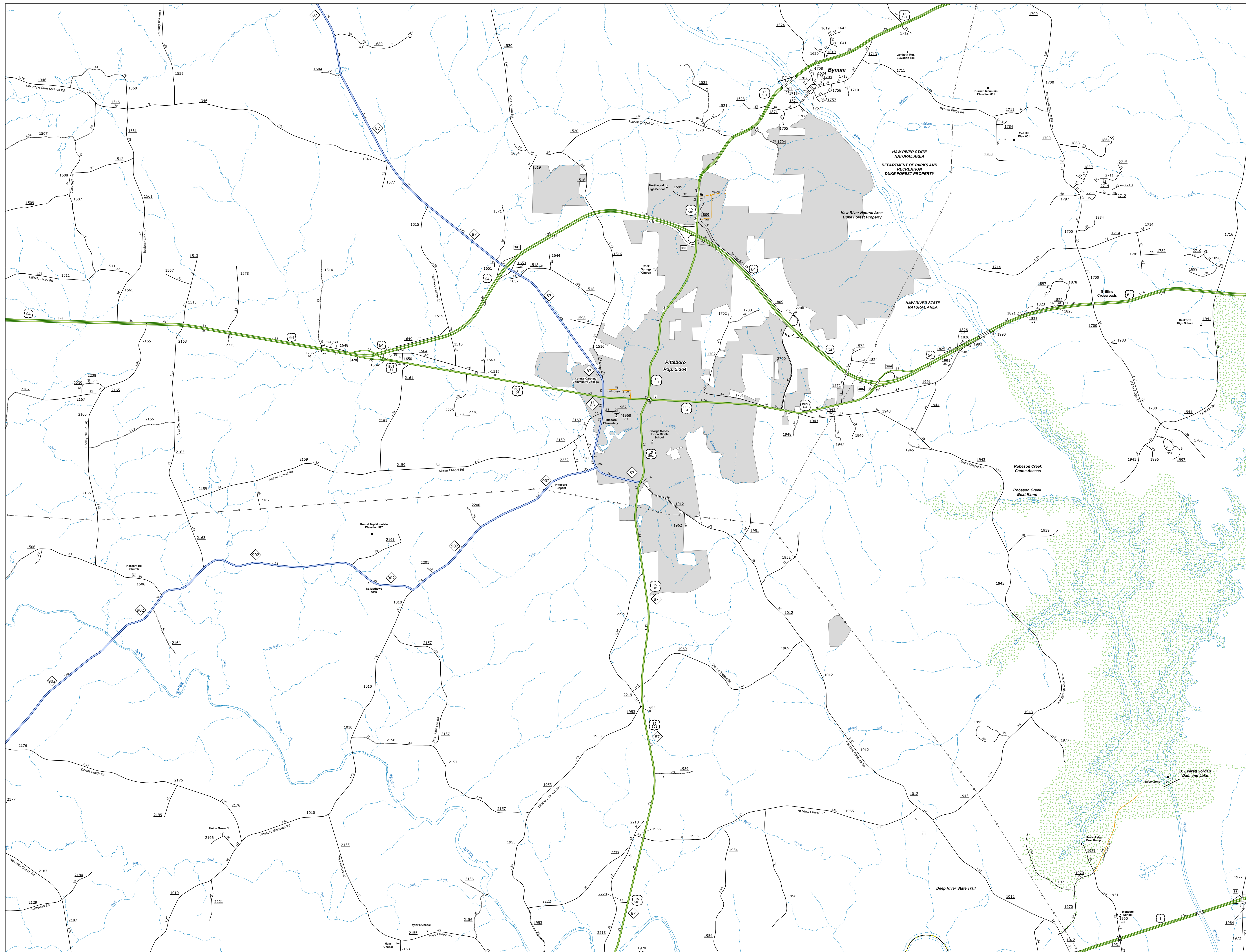
NORTH CAROLINA PLANE COORDINATE SYSTEM
LAMBERT CONFORMAL CONIC PROJECTION

SHEET 2 of 7

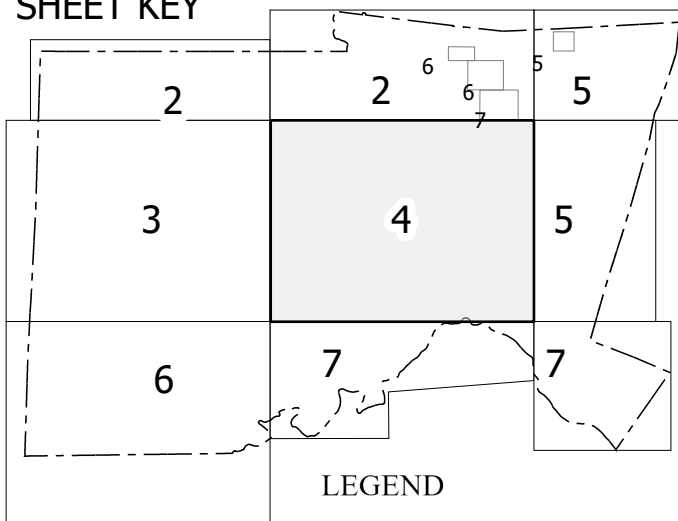
<https://connect.ncdot.gov/resources/State-Mapping/Pages/Ordering-Maps.aspx>
(919) 834-8480



COPIES OF THIS MAP ARE AVAILABLE TO THE
PUBLIC AT NOMINAL COST. CONTACT US TO ORDER:
mapping@ncdot.gov
<https://connect.ncdot.gov/resources/State-Mapping/Pages/Ordering-Maps.aspx>
(919) 834-8480



SHEET KEY



LEGEND

- | INTERSTATE | US | NC | |
|------------|----|----|------------------------------------|
| | | | Divided Hwy |
| | | | Undivided Hwy |
| | | | BLUE RIDGE PARKWAY |
| | | | UNPAVED SURFACED ROAD |
| | | | HARD SURFACED ROAD |
| | | | NON-SYSTEM ROAD |
| | | | PROVISIONALLY DRAWN ROAD |
| | | | PROJECTED LOCATION |
| | | | INTERSECTION DISTANCE |
| | | | STANDARD ROAD BRIDGE |
| | | | RAILROAD BRIDGE |
| | | | DRAW SPAN ON BRIDGE |
| | | | PEDESTRIAN BRIDGE |
| | | | PEDESTRIAN WALKWAY |
| | | | PEDESTRIAN UNDERPASS |
| | | | VEHICULAR UNDERPASS |
| | | | TUNNEL |
| | | | CULVERT |
| | | | PIPE |
| | | | INTERSTATE HIGHWAY |
| | | | U.S. NUMBERED HIGHWAY |
| | | | N.C. NUMBERED HIGHWAY |
| | | | U.S. NUMBERED BICYCLE ROUTE |
| | | | N.C. NUMBERED BICYCLE ROUTE |
| | | | INTERSTATE INTERCHANGE NUMBER |
| | | | SECONDARY ROAD NUMBER |
| | | | UTILITY LINES |
| | | | RAILROAD LINE |
| | | | RAILROAD STATION |
| | | | INSET AREA |
| | | | STATE LINE |
| | | | COUNTY LINE |
| | | | SMOOTHED URBAN BOUNDARIES |
| | | | CITY LIMITS |
| | | | FERRY ROAD AND RAMP |
| | | | SARCO CREEK OR STREAM |
| | | | WIDE RIVER OR CREEK |
| | | | RESERVOIR, POND OR LAKE W/ ISLAND |
| | | | DAM OR DAM WITH LOCK |
| | | | WATERFALL |
| | | | SWAMP |
| | | | COMMUNITY |
| | | | COUNTY SEAT |
| | | | SCHOOL |
| | | | COLLEGE OR UNIVERSITY |
| | | | HOSPITAL |
| | | | COAST GUARD STATION |
| | | | CHURCH |
| | | | CHURCH WITH CEMETERY |
| | | | CEMETERY |
| | | | PATROL STATION |
| | | | CORRECTION OR PENAL INSTITUTION |
| | | | QUARRY |
| | | | MINE OR PIT |
| | | | HIGHWAY GARAGE OR MAINT. YARD |
| | | | DIST. HIGHWAY DIV. OR DIST. OFFICE |
| | | | MILITARY POST |
| | | | WEIGH STATION |
| | | | FAIRGROUNDS |
| | | | HISTORICAL SITE |
| | | | POINTS OF INTEREST |
| | | | POST OFFICE |
| | | | STATE FOREST |
| | | | LIGHTHOUSE |
| | | | MOUNTAIN SUMMIT |
| | | | MOUNTAIN GAP |
| | | | OVERLOOK |
| | | | |

NATIONAL / STATE FOREST BOUNDARY



NATIONAL / STATE PARK BOUNDARY



GAME LANDS BOUNDARY



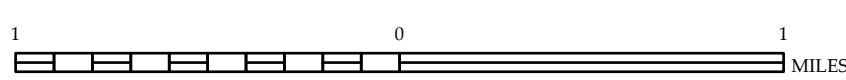
MILITARY RESERVATION BOUNDARY



CHATHAM COUNTY
NORTH CAROLINA

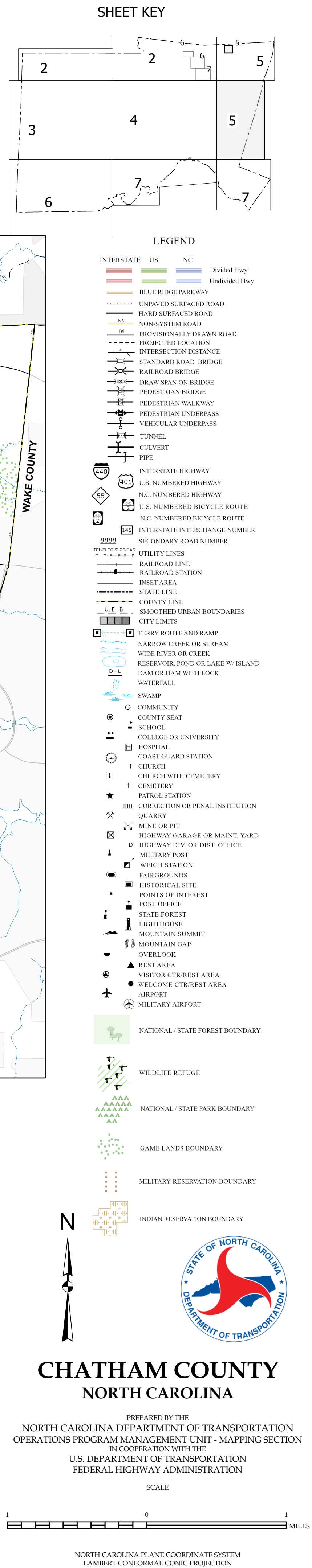
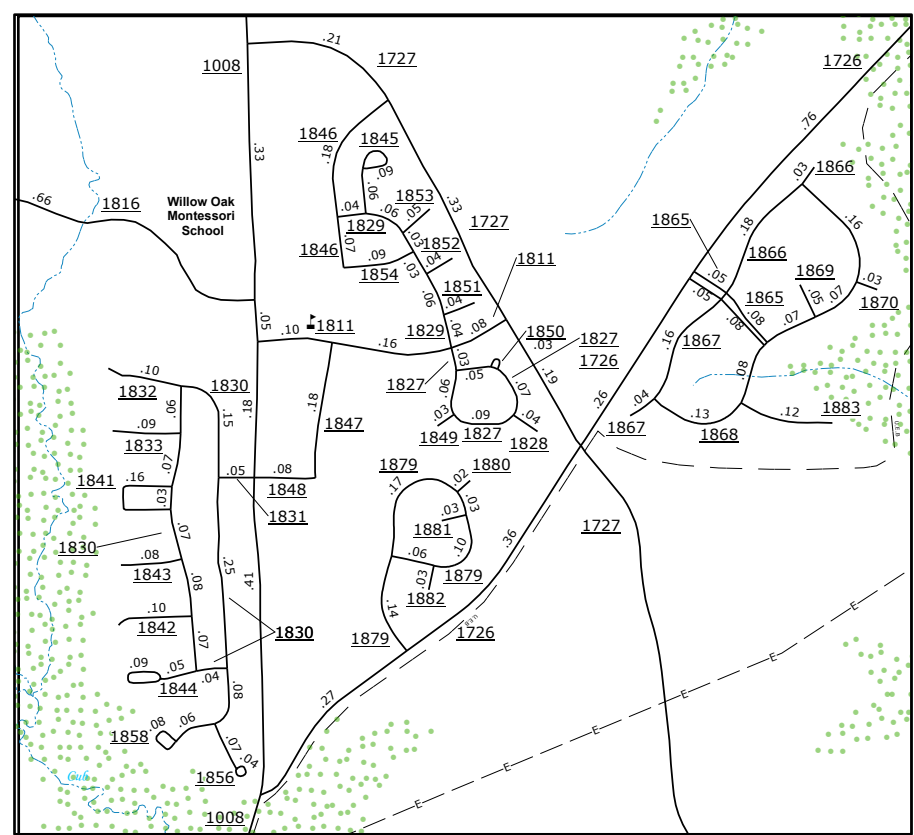
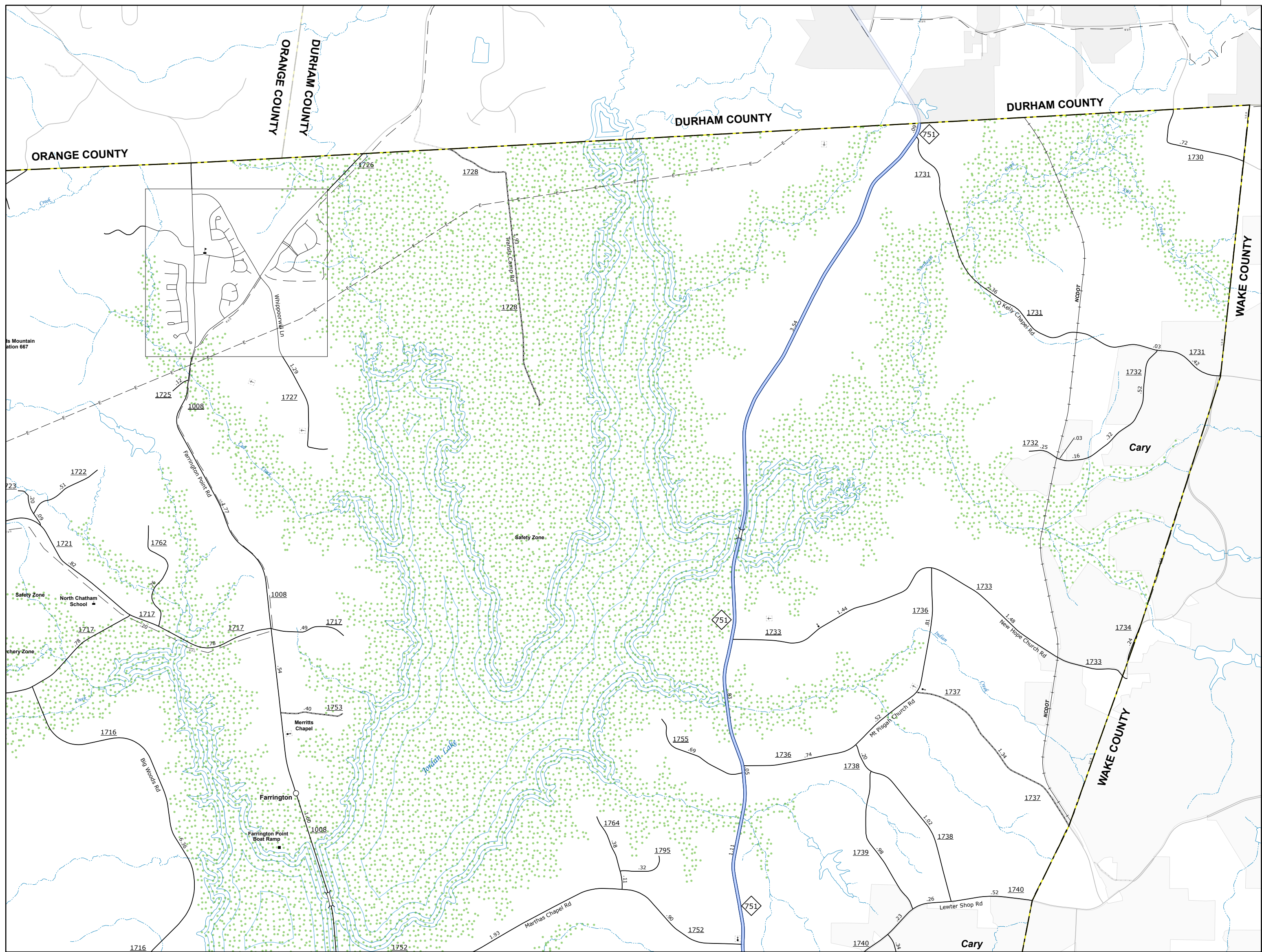
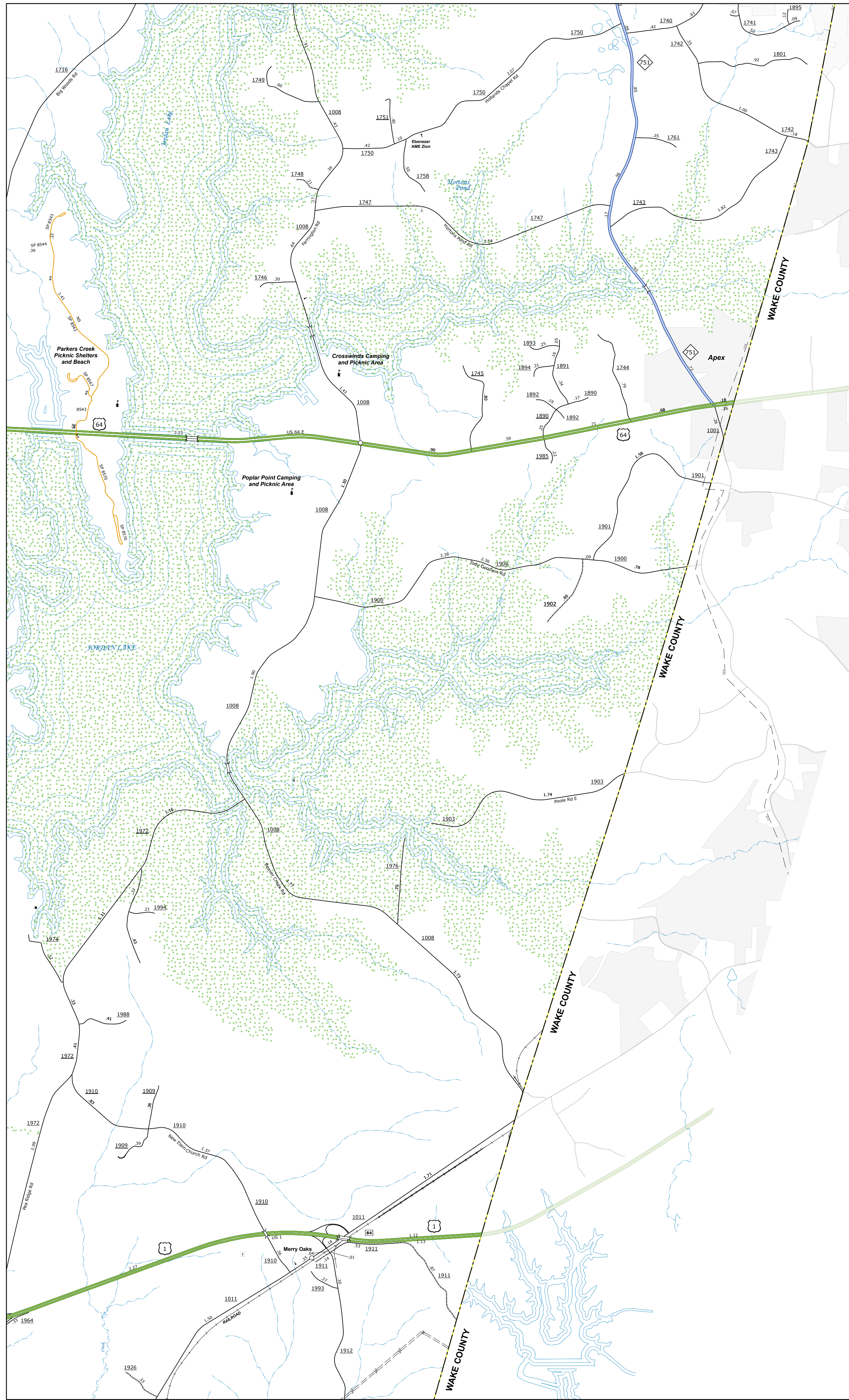
PREPARED BY THE
NORTH CAROLINA DEPARTMENT OF TRANSPORTATION
OPERATIONS PROGRAM MANAGEMENT UNIT - MAPPING SECTION
IN COOPERATION WITH THE
U.S. DEPARTMENT OF TRANSPORTATION
FEDERAL HIGHWAY ADMINISTRATION

SCALE

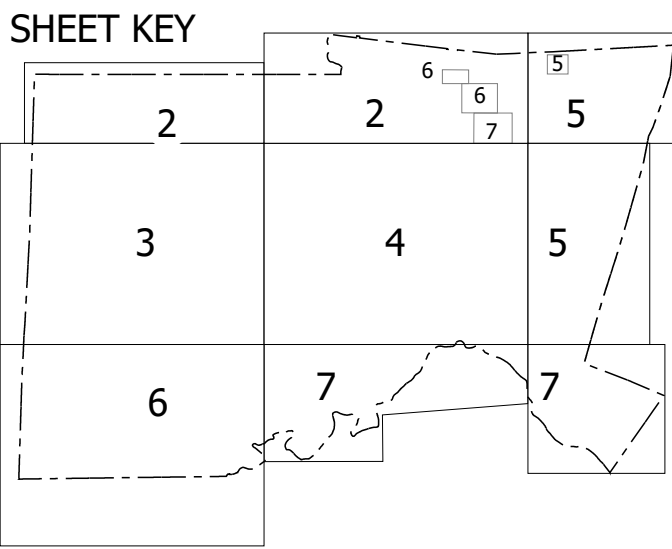
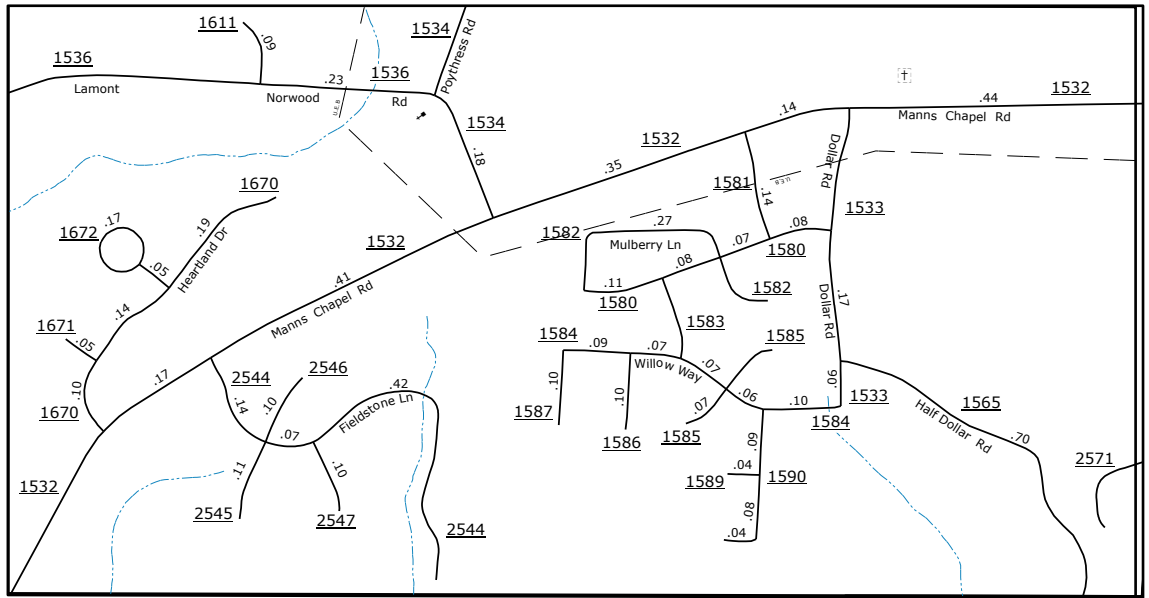
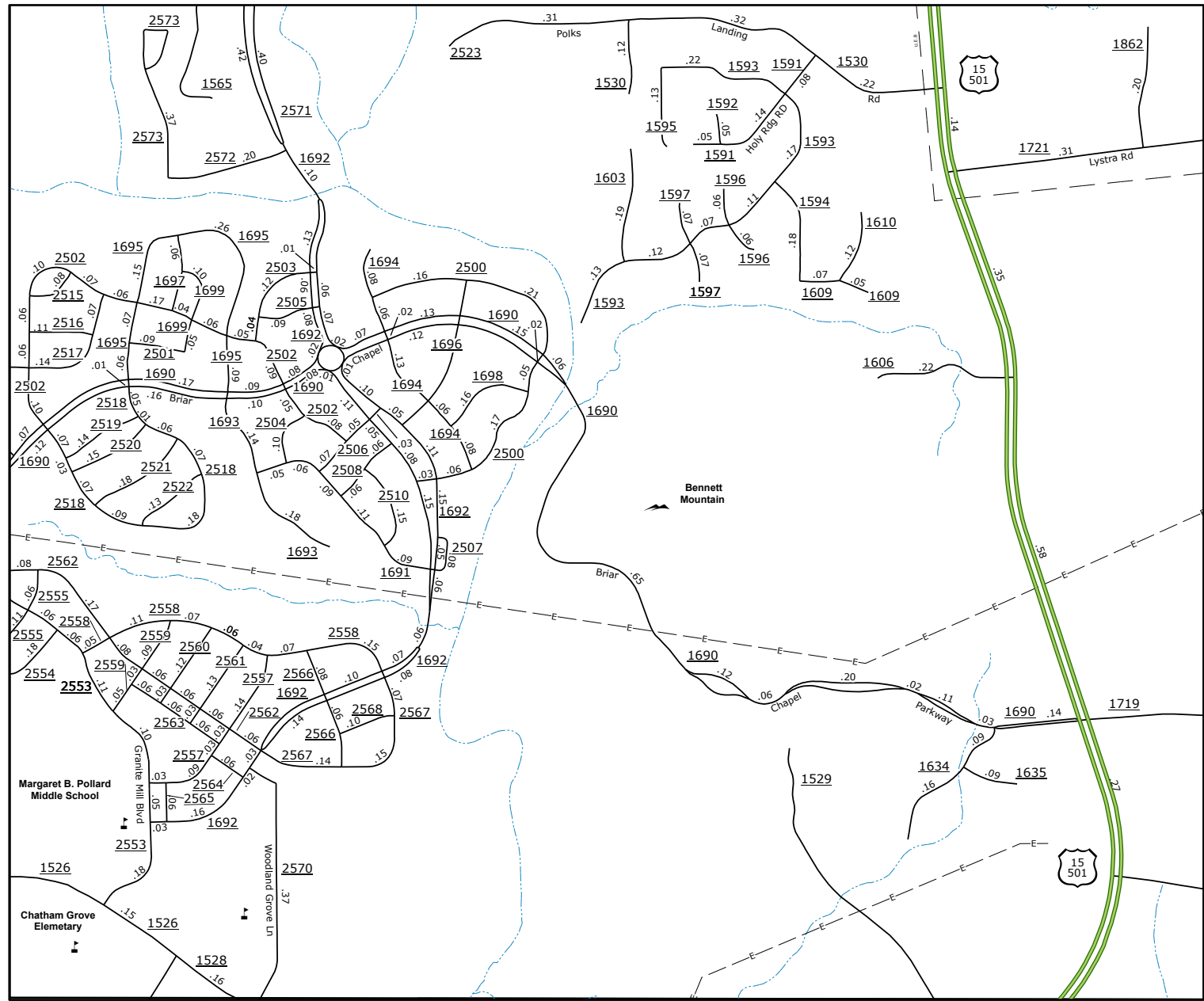
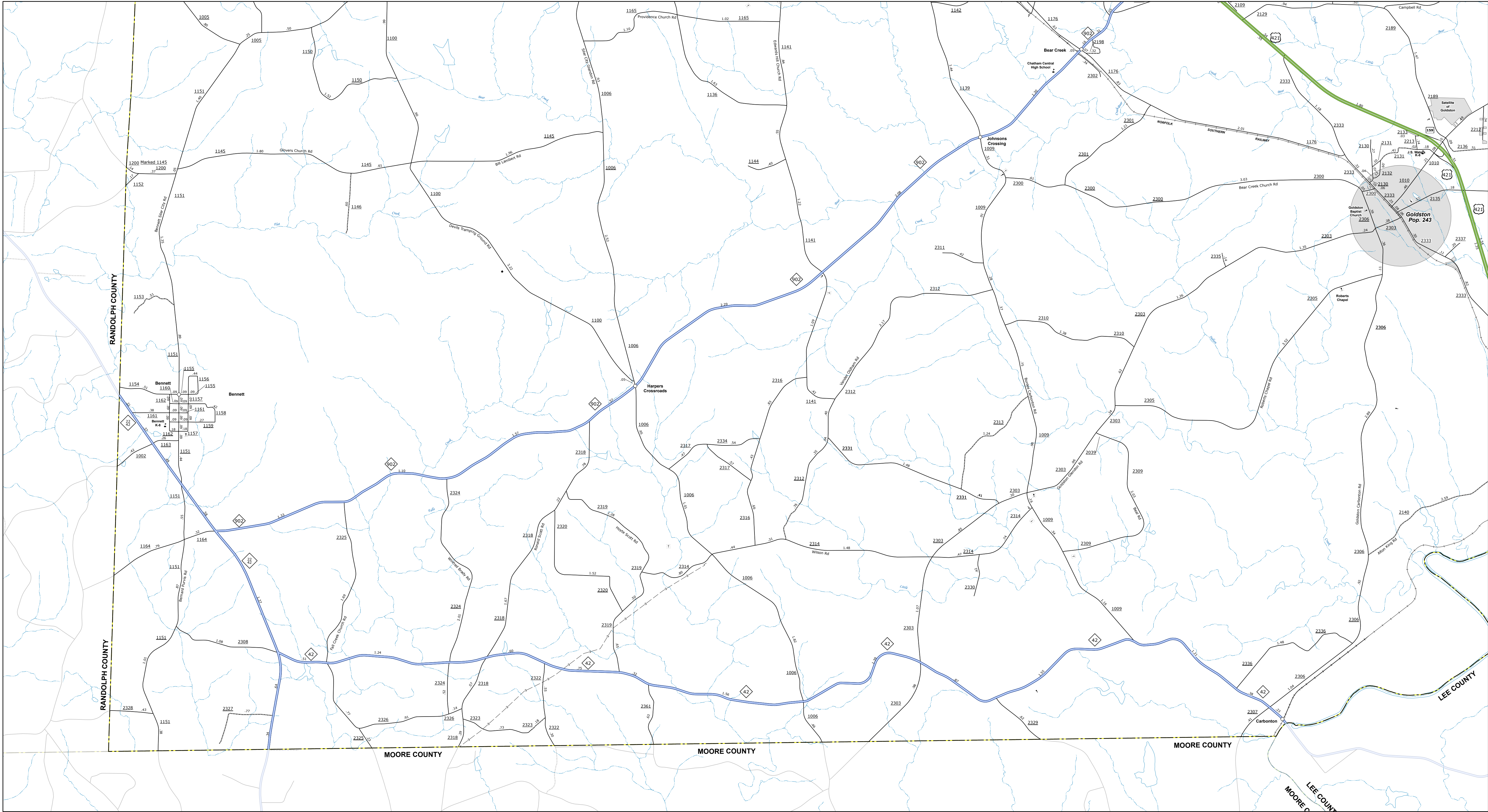


NORTH CAROLINA PLANE COORDINATE SYSTEM
LAMBERT CONFORMAL CONIC PROJECTION

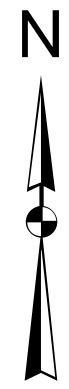
SHEET 3 of 7



TRAFFIC OF USE: This map is for informational purposes only. It is not intended for use in legal proceedings. The data is derived from numerous sources with varying degrees of accuracy and is not guaranteed to be 100% accurate. The information shown on this map is for informational purposes only and may not be used for any other purpose. For digital copies of this map or additional map products, visit www.ncdot.gov.

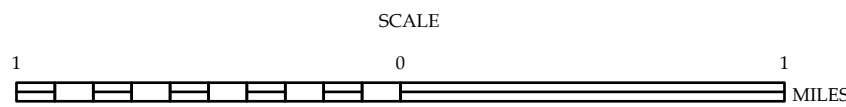


- LEGEND**
- INTERSTATE US NC Divided Hwy Undivided Hwy
 - BLUE RIDGE PARKWAY
 - UNPAVED SURFACED ROAD
 - HARD SURFACED ROAD
 - NON-SYSTEM ROAD
 - PROVISIONALLY DRAWN ROAD
 - PROTECTED LOCATION
 - INTERSECTION DISTANCE
 - STANDARD ROAD BRIDGE
 - RAILROAD BRIDGE
 - DRAW SPAN ON BRIDGE
 - PEDESTRIAN BRIDGE
 - PEDESTRIAN WALKWAY
 - PEDESTRIAN UNDERPASS
 - VEHICULAR UNDERPASS
 - TUNNEL
 - CULVERT
 - PIPE
 - INTERSTATE HIGHWAY
 - U.S. NUMBERED HIGHWAY
 - N.C. NUMBERED HIGHWAY
 - U.S. NUMBERED BI-CYCLE ROUTE
 - INTERSTATE INTERCHANGE NUMBER
 - SECONDARY ROAD NUMBER
 - TELEPHONE-PROVIDER
 - UTILITY LINES
 - RAILROAD LINE
 - RAILROAD STATION
 - INSET AREA
 - STATE LINE
 - COUNTY LINE
 - SMOOTHED URBAN BOUNDARIES
 - CITY LIMITS
 - FERRY BOAT AND RAMP
 - NARROW CREEK OR STREAM
 - WIDE RIVER OR CREEK
 - RESERVOIR, POND OR LAKE W/ ISLAND
 - DAM OR DAM WITH LOCK
 - WATERFALL
 - SWAMP
 - COMMUNITY
 - COUNTY SEAT
 - SCHOOL
 - COLLEGE OR UNIVERSITY
 - HOSPITAL
 - COAST GUARD STATION
 - CHURCH
 - CHURCH WITH CEMETERY
 - CEMETERY
 - PATROL STATION
 - CORRECTION OR PENAL INSTITUTION
 - QUARRY
 - MINE OR PIT
 - HIGHWAY GARAGE OR MAINT. YARD
 - HIGHWAY DIV. OR DIST. OFFICE
 - MILITARY POST
 - WEIGH STATION
 - FAIRGROUNDS
 - HISTORICAL SITE
 - POINTS OF INTEREST
 - POST OFFICE
 - STATE FOREST
 - LIGHTHOUSE
 - MOUNTAIN SUMMIT
 - MOUNTAIN GAP
 - OVERLOOK
 - REST AREA
 - VISITOR CTR/REST AREA
 - WELCOME CTR/REST AREA
 - AIRPORT
 - MILITARY AIRPORT
 - NATIONAL / STATE FOREST BOUNDARY
 - WILDLIFE REFUGE
 - NATIONAL / STATE PARK BOUNDARY
 - GAME LANDS BOUNDARY
 - MILITARY RESERVATION BOUNDARY
 - INDIAN RESERVATION BOUNDARY



CHATHAM COUNTY NORTH CAROLINA

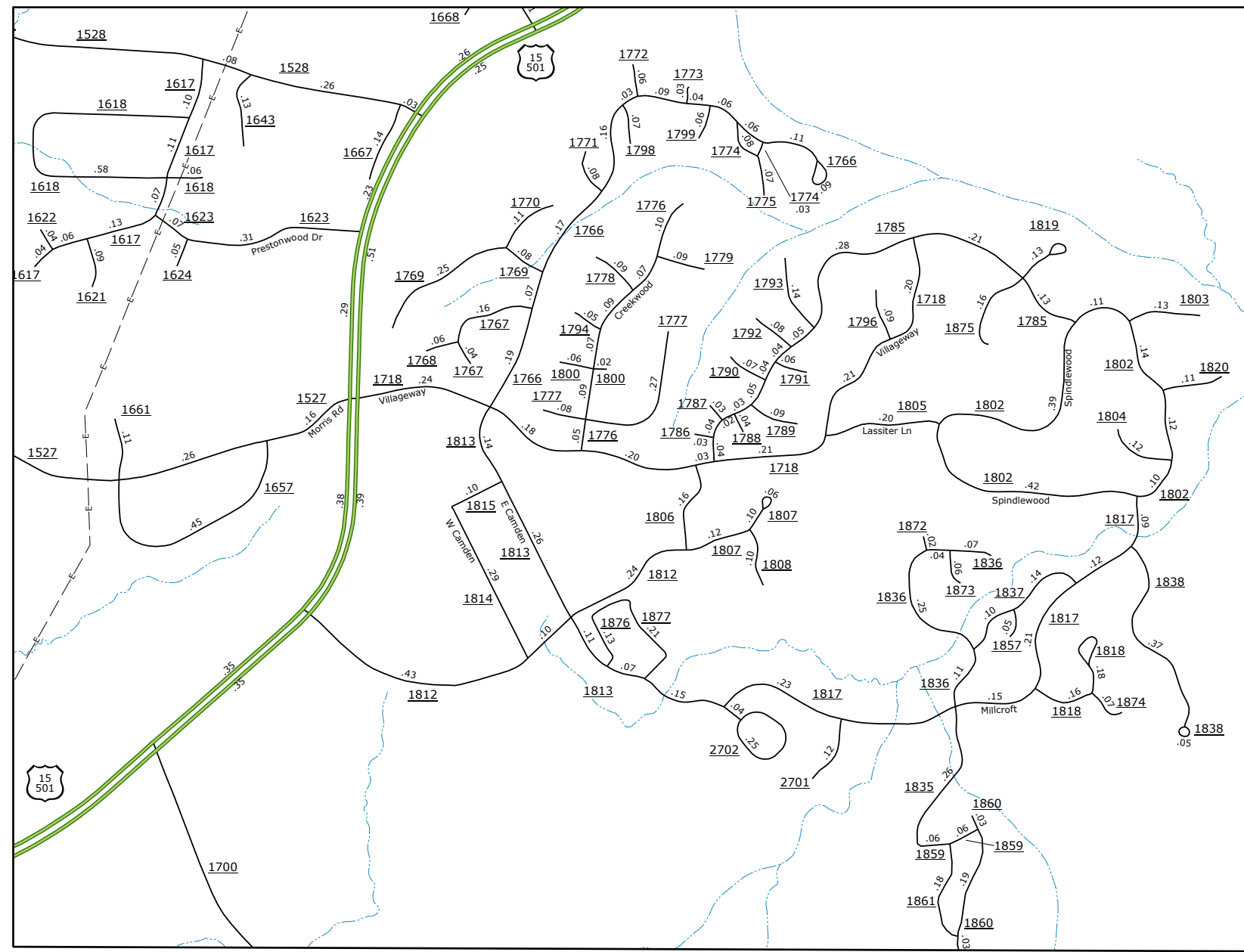
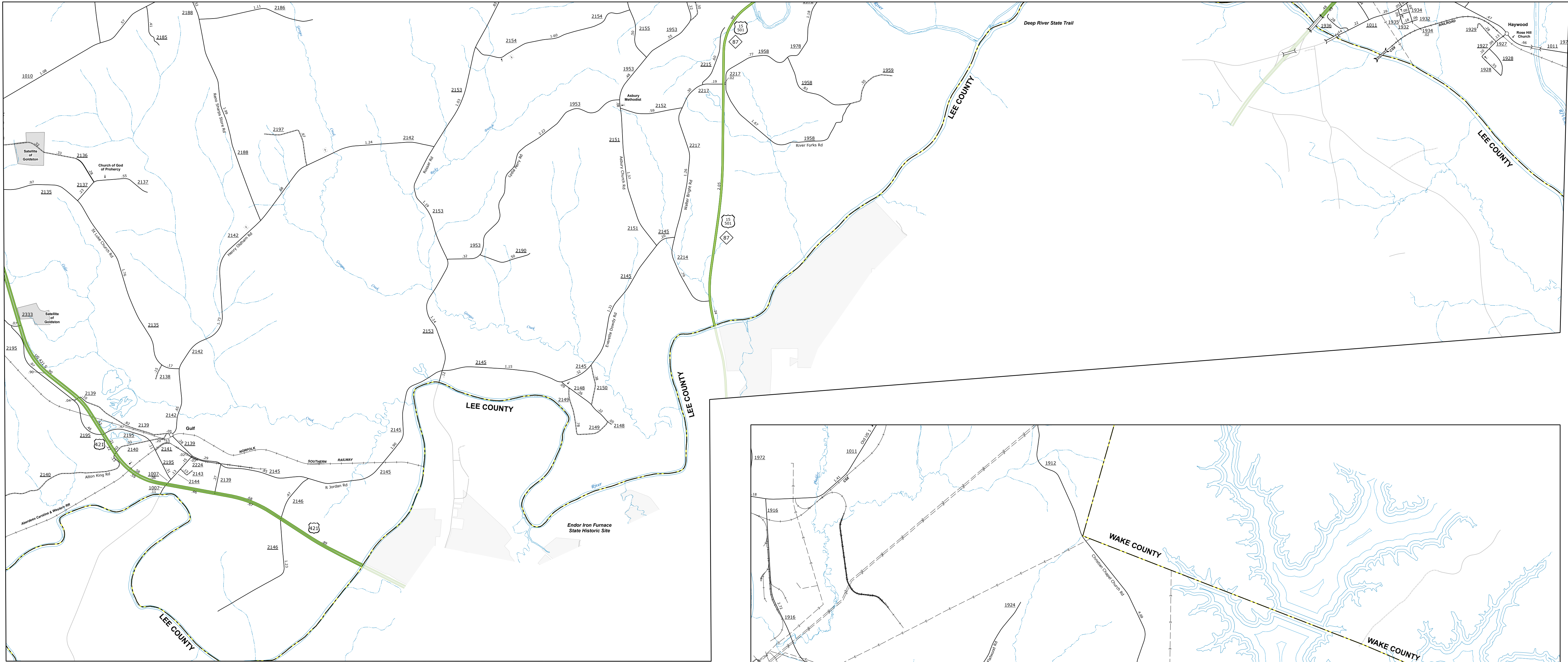
PREPARED BY THE
NORTH CAROLINA DEPARTMENT OF TRANSPORTATION
OPERATIONS PROGRAM MANAGEMENT UNIT - MAPPING SECTION
IN COOPERATION WITH THE
U.S. DEPARTMENT OF TRANSPORTATION
FEDERAL HIGHWAY ADMINISTRATION



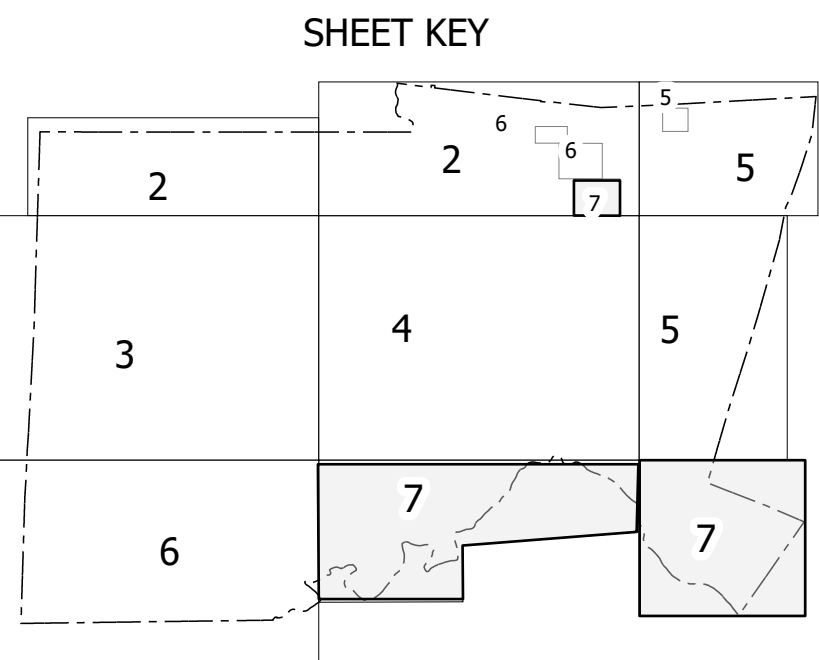
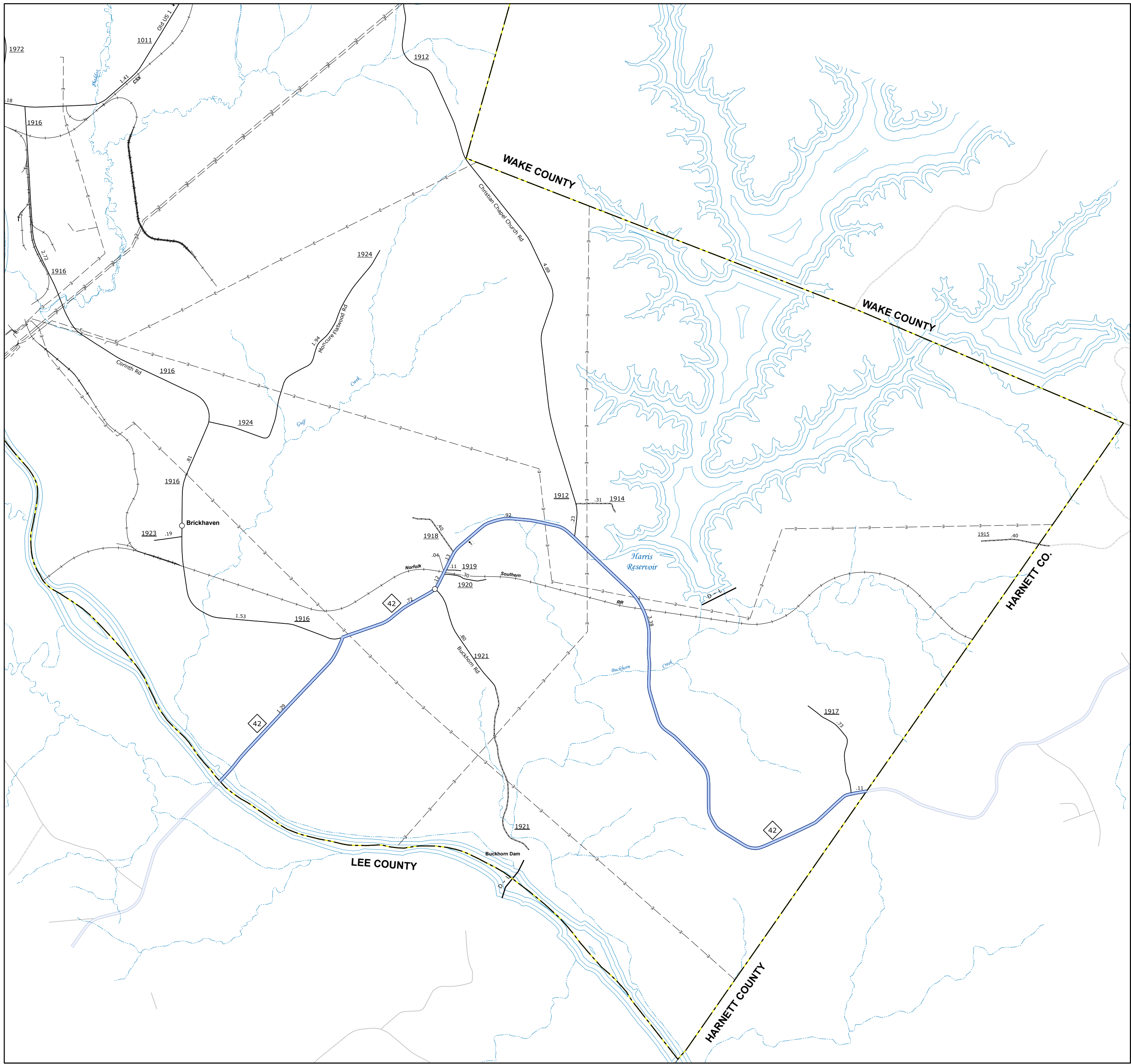
NORTH CAROLINA PLANE COORDINATE SYSTEM
LAMBERT CONFORMAL CONIC PROJECTION

SHEET 6 of 7

TRAFFIC OR USE. The Mapping Section is responsible for the accuracy and completeness of the information shown on this map. The information shown on this map is for informational purposes only and should not be used for any other purpose. The information shown on this map is for informational purposes only and should not be used for any other purpose. The information shown on this map is for informational purposes only and should not be used for any other purpose.



0 0.5 MILES



LEGEND

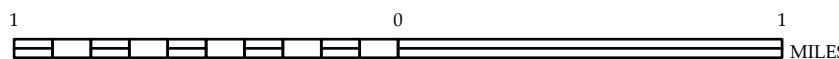
- INTERSTATE US NC
- Divided Hwy
- Undivided Hwy
- BLUE RIDGE PARKWAY
- UNPAVED SURFACED ROAD
- HARD SURFACED ROAD
- NON-SYSTEM ROAD
- PROVISIONALLY DRAWN ROAD
- PROJECTED LOCATION
- INTERSECTION DISTANCE
- STANDARD ROAD BRIDGE
- RAILROAD BRIDGE
- DRAW SPAN ON BRIDGE
- PEDESTRIAN BRIDGE
- PEDESTRIAN WALKWAY
- PEDESTRIAN UNDERPASS
- VEHICULAR UNDERPASS
- TUNNEL
- CULVERT
- PIPE
- INTERSTATE HIGHWAY
- U.S. NUMBERED HIGHWAY
- N.C. NUMBERED HIGHWAY
- U.S. NUMBERED BICYCLE ROUTE
- N.C. NUMBERED BICYCLE ROUTE
- INTERSTATE INTERCHANGE NUMBER
- SECONDARY ROAD NUMBER
- UTILITY LINES
- RAILROAD LINE
- RAILROAD STATION
- INSET AREA
- STATE LINE
- COUNTY LINE
- SMOOTHED URBAN BOUNDARIES
- CITY LIMITS
- FERRY ROUTE AND RAMP
- NARROW CREEK OR STREAM
- WIDE RIVER OR CREEK
- RESERVOIR, POND OR LAKE W/ ISLAND
- DAM OR DAM WITH LOCK
- WATERFALL
- SWAMP
- COMMUNITY
- COUNTY SEAT
- SCHOOL
- COLLEGE OR UNIVERSITY
- HOSPITAL
- COAST GUARD STATION
- CHURCH
- CHURCH WITH CEMETERY
- CEMETERY
- PATROL STATION
- CORRECTION OR PENAL INSTITUTION
- QUARRY
- MINE OR PIT
- HIGHWAY GARAGE OR MAINT. YARD
- HIGHWAY DIV. OR DIST. OFFICE
- MILITARY POST
- WEIGH STATION
- FAIRGROUNDS
- HISTORICAL SITE
- POINTS OF INTEREST
- POST OFFICE
- STATE FOREST
- LIGHTHOUSE
- MOUNTAIN SUMMIT
- MOUNTAIN GAP
- OVERLOOK
- REST AREA
- VISITOR CTR/REST AREA
- WELCOME CTR/REST AREA
- AIRPORT
- MILITARY AIRPORT
- NATIONAL / STATE FOREST BOUNDARY
- WILDLIFE REFUGE
- NATIONAL / STATE PARK BOUNDARY
- GAME LANDS BOUNDARY
- MILITARY RESERVATION BOUNDARY
- INDIAN RESERVATION BOUNDARY



CHATHAM COUNTY NORTH CAROLINA

PREPARED BY THE
NORTH CAROLINA DEPARTMENT OF TRANSPORTATION
OPERATIONS PROGRAM MANAGEMENT UNIT - MAPPING SECTION
IN COOPERATION WITH THE
U.S. DEPARTMENT OF TRANSPORTATION
FEDERAL HIGHWAY ADMINISTRATION

SCALE



NORTH CAROLINA PLANE COORDINATE SYSTEM
LAMBERT CONFORMAL CONIC PROJECTION

SHEET 7 OF 7