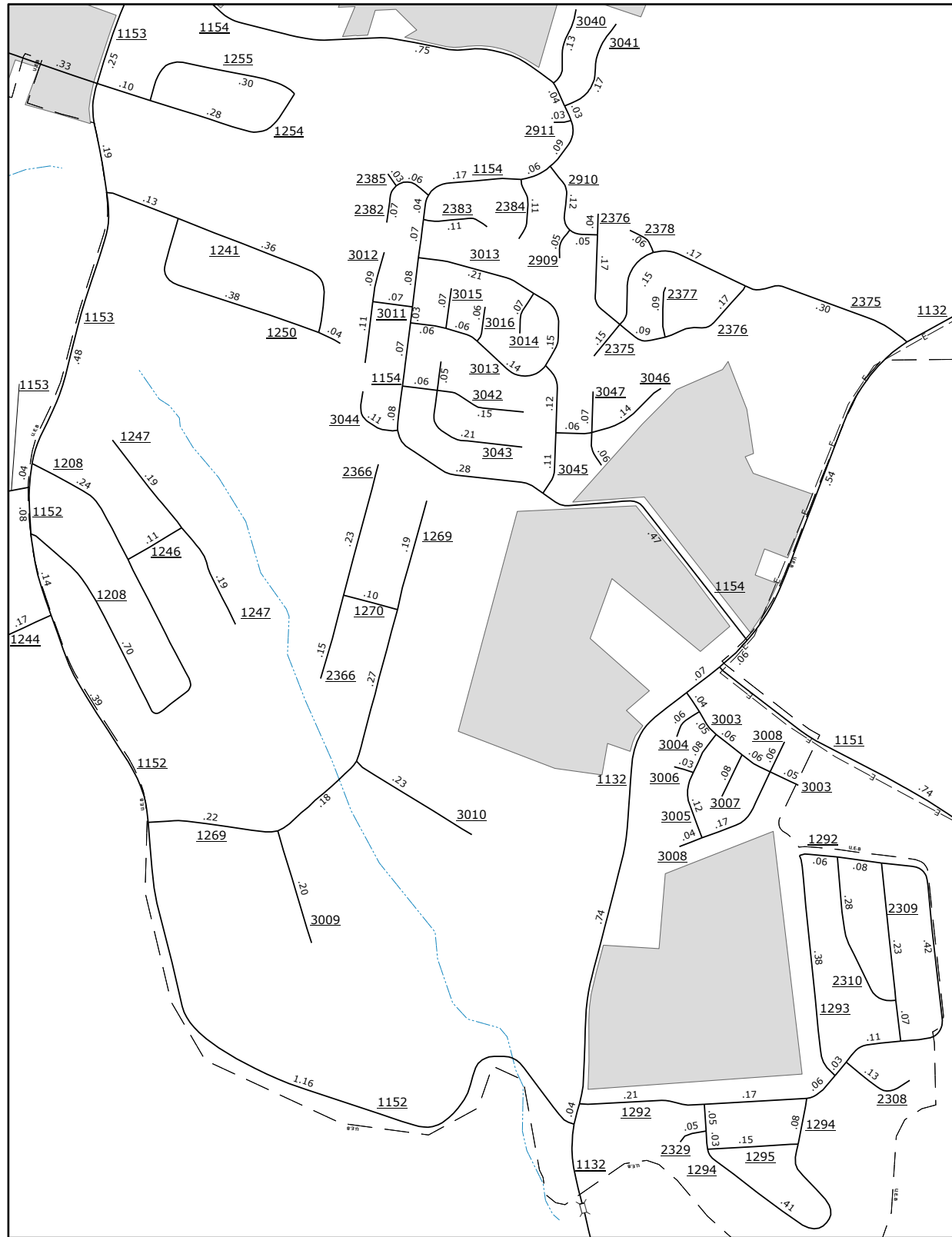
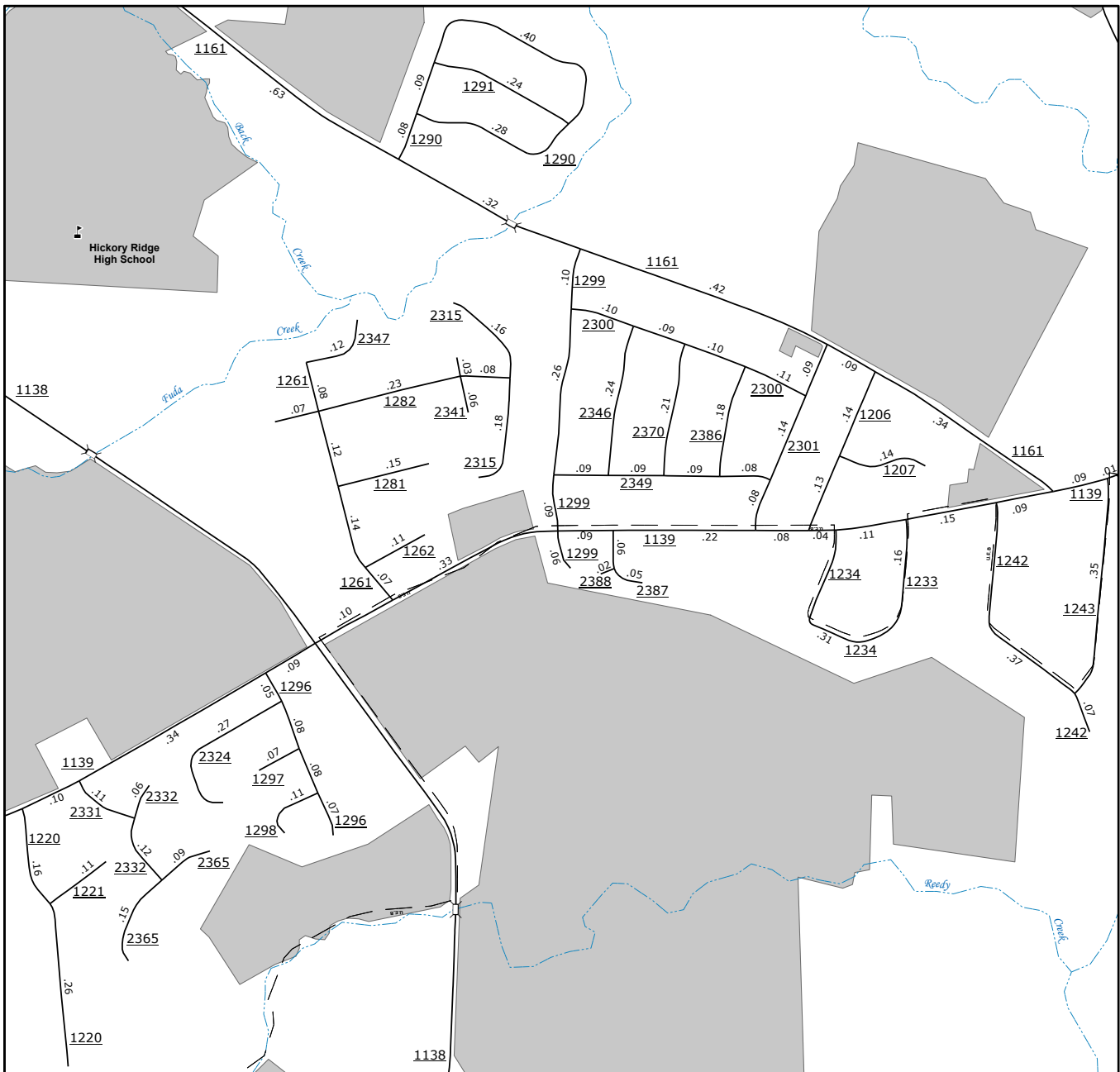


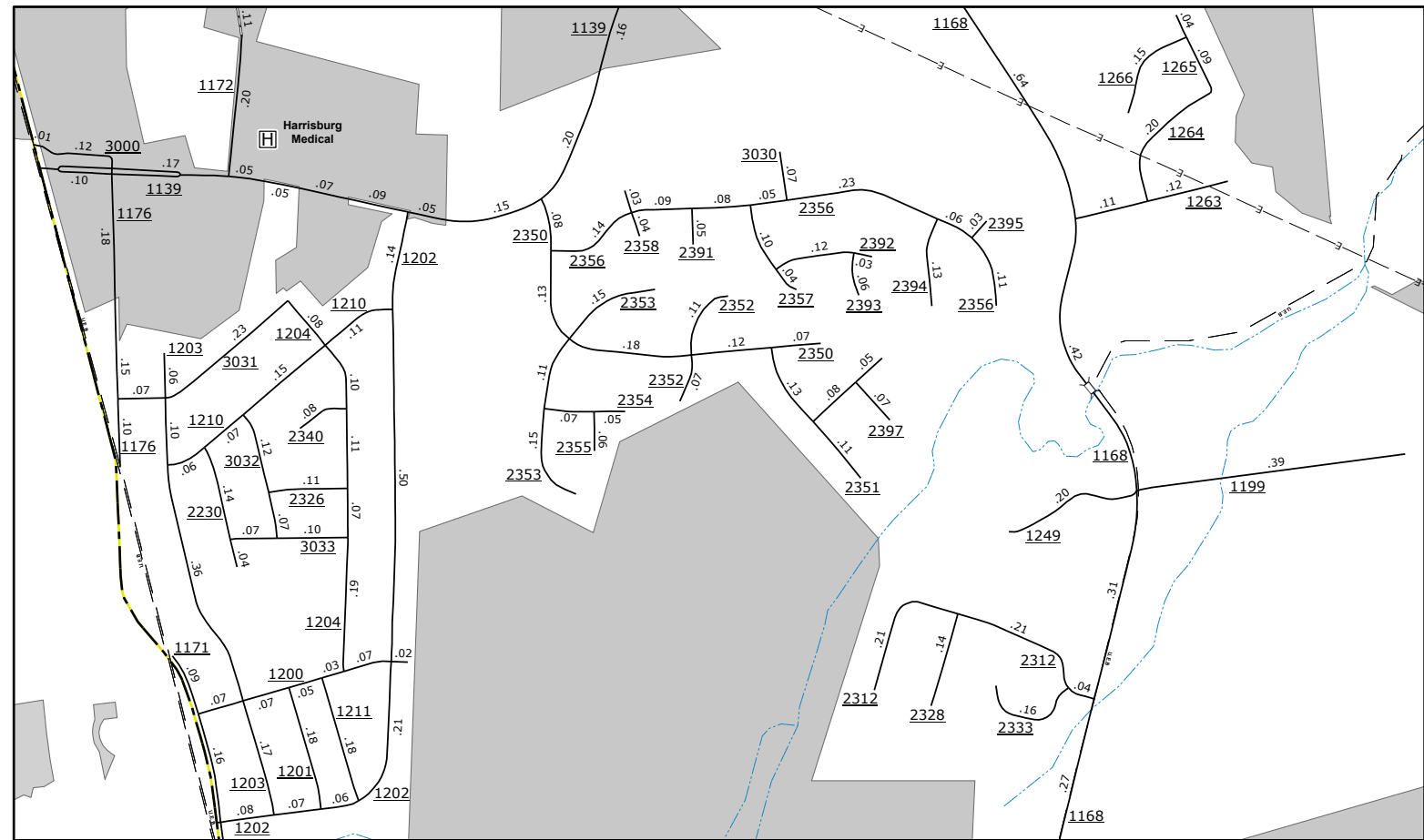
Charlie Walker Road



Flowes Store Road



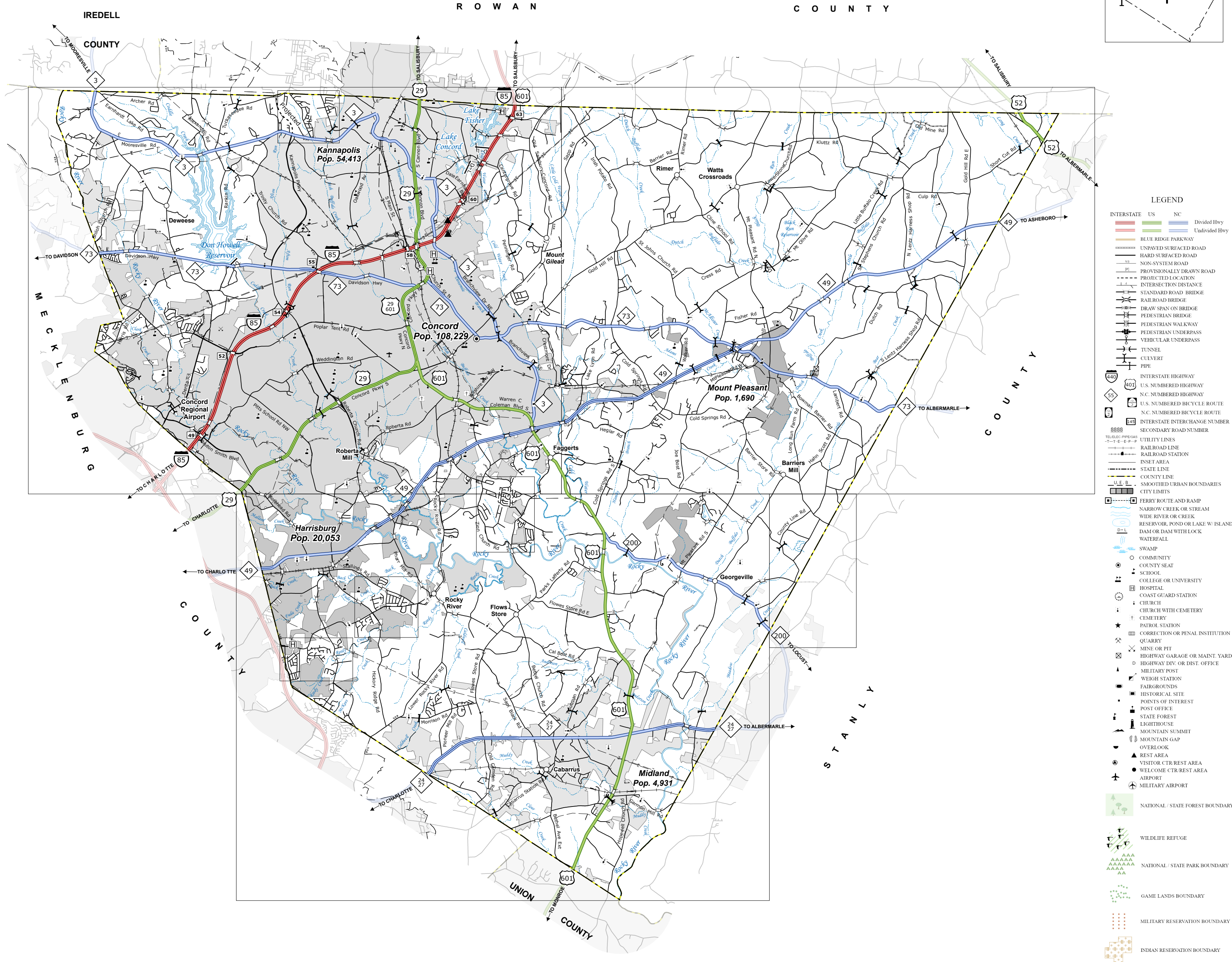
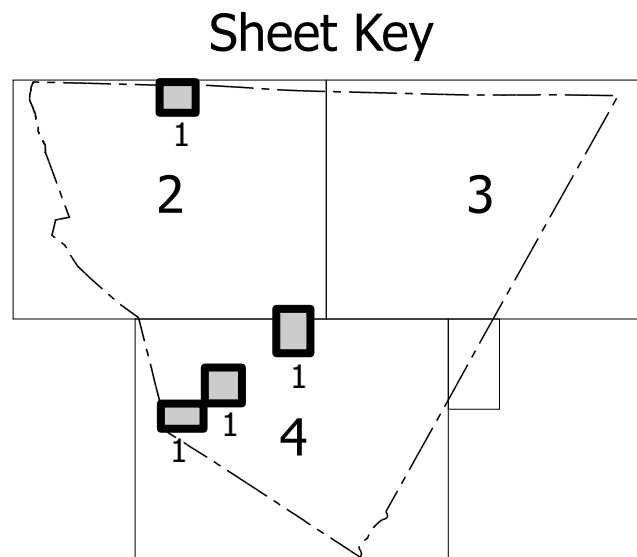
Hickory Ridge



Bradford Park

COPIES OF THIS MAP ARE AVAILABLE  
TO THE PUBLIC AT NOMINAL COST:  
mappingunit@ncdot.gov  
https://www.ncdot.gov/resources/State-Mapping/Pages/Ordering-Maps.aspx  
(919) 834-4440

The Mapping Section's goal is to provide the most accurate and current information possible. Map data is compiled from numerous sources with varying dates of publication and map accuracy standards. As a result, the accuracy, currency, and completeness of the data provided will vary. This map includes state-maintained roads and important non-system roads. The information shown on this map was last updated in February 2024. For additional information, visit <https://www.ncdot.gov/transportation/mapping/> and click on Data Providers or contact us by phone at (919) 834-4440.



- LEGEND**
- INTERSTATE: I-77, I-85, I-95
  - U.S. NUMBERED HIGHWAY: US-52, US-75, US-101
  - N.C. NUMBERED HIGHWAY: NC-100, NC-150, NC-200
  - U.S. NUMBERED BI-STATE ROUTE: US-101
  - INTERSTATE EXCHANGE NUMBER: 101, 150, 200
  - SECONDARY ROAD NUMBER: 101, 150, 200
  - UTILITY LINES: Gas, Water, Sewer
  - RAILROAD LINE: RR
  - RAILROAD STATION: RR
  - STATE LINE: State Line
  - COUNTY LINE: County Line
  - UNINCORPORATED TOWN BOUNDARIES: Unincorporated Town
  - CITY LIMITS: City Limits
  - PORT BRIDGE AND RAMP: Port Bridge and Ramp
  - NARROW CREEK OR STREAM: Narrow Creek or Stream
  - WIDE RIVER OR CREEK: Wide River or Creek
  - RECREATION, POND OR LAKE W/ ISLAND: Recreation, Pond or Lake w/ Island
  - DAM OR DAM WITH LOCK: Dam or Dam with Lock
  - WATERFALL: Waterfall
  - SWAMP: Swamp
  - COMMUNITY: Community
  - CITY OR TOWN: City or Town
  - SCHOOL: School
  - COLLEGE OR UNIVERSITY: College or University
  - HOSPITAL: Hospital
  - COUNTY JAIL: County Jail
  - CHURCH: Church
  - CHURCH WITH CEMETERY: Church with Cemetery
  - CEMETERY: Cemetery
  - PAPER STATION: Paper Station
  - CORRECTIONAL INSTITUTION: Correctional Institution
  - QUARRY: Quarry
  - MINE OR PIT: Mine or Pit
  - HIGHWAY GARAGE OR MAINT. YARD: Highway Garage or Maint. Yard
  - BI-STATE JAIL OR DIST. OFFICE: Bi-State Jail or Dist. Office
  - MILITARY POST: Military Post
  - WEIGH STATION: Weigh Station
  - FABRIICATION: Fabrication
  - HISTORICAL SITE: Historical Site
  - POINTS OF INTEREST: Points of Interest
  - POST OFFICE: Post Office
  - STATE FOREST: State Forest
  - LIGHTHOUSE: Lighthouse
  - MOUNTAIN SUMMIT: Mountain Summit
  - MOUNTAIN GAP: Mountain Gap
  - OVERLOOK: Overlook
  - REST AREA: Rest Area
  - VISITOR CENTER AREA: Visitor Center Area
  - WELCOME CENTER AREA: Welcome Center Area
  - AIRPORT: Airport
  - MILITARY AIRPORT: Military Airport
  - NATIONAL / STATE FOREST BOUNDARY: National / State Forest Boundary
  - WILDLIFE REFUGE: Wildlife Refuge
  - NATIONAL / STATE PARK BOUNDARY: National / State Park Boundary
  - GAME LANDS BOUNDARY: Game Lands Boundary
  - MILITARY RESERVATION BOUNDARY: Military Reservation Boundary
  - INDIAN RESERVATION BOUNDARY: Indian Reservation Boundary



## CABARRUS COUNTY NORTH CAROLINA

PREPARED BY THE  
NORTH CAROLINA DEPARTMENT OF TRANSPORTATION  
OPERATIONS PROGRAM MANAGEMENT UNIT - MAPPING SECTION  
IN COOPERATION WITH THE  
U.S. DEPARTMENT OF TRANSPORTATION  
FEDERAL HIGHWAY ADMINISTRATION

SCALE  
1 0 1 2 3 4  
MILES

SCALE FOR ENLARGEMENTS

0 0.5  
MILES

NORTH CAROLINA PLANE COORDINATE SYSTEM  
LAMBERT CONFORMAL CONIC PROJECTION





[illegible]

This map displays the Harrisburg, North Carolina area, including the city of Harrisburg (population 20,053) and the town of Midland (population 4,931). The map shows a network of roads, including major highways like US-601 and US-158, and local roads. Key landmarks include the Rocky River, various churches (e.g., St. Martin's Lutheran Church, St. Stephens Church), and schools (e.g., Harrisburg Elementary School, Midland Elementary School). The map is bordered by Mecklenburg County to the west and Stanley County to the south and east. The map also shows the locations of several other towns and villages, including Rocky River, C.G. Smith, and Georgeville.

[illegible]

PREPARED BY THE  
NORTH CAROLINA DEPARTMENT OF TRANSPORTATION  
OPERATIONS PROGRAM MANAGEMENT UNIT - MAPPING SECTION  
IN COOPERATION WITH THE  
U.S. DEPARTMENT OF TRANSPORTATION  
FEDERAL HIGHWAY ADMINISTRATION

SCALE



DIVISION 10    DISTRICT 1    CABARRUS COUNTY    NORTH CAROLINA    FIPS 025