

**BURKE COUNTY**  
**NORTH CAROLINA**

PREPARED BY THE  
NORTH CAROLINA DEPARTMENT OF TRANSPORTATION  
OPERATIONS PROGRAM MANAGEMENT UNIT - MAPPING SECTION  
IN COOPERATION WITH THE  
U.S. DEPARTMENT OF TRANSPORTATION  
FEDERAL HIGHWAY ADMINISTRATION

SCALE

SCALE FOR ENLARGEMENTS

1 0 1

MILES

NORTH CAROLINA PLANE COORDINATE SYSTEM  
LAMBERT CONFORMAL CONIC PROJECTION

SHEET 1 OF 6



COPIES OF THIS MAP ARE AVAILABLE  
TO THE PUBLIC AT NOMINAL COST:  
mapping@support@nodot.gov  
[https://connect.nodot.gov/resources/  
State-Mapping/Pages/Ordering-Maps.aspx](https://connect.nodot.gov/resources/State-Mapping/Pages/Ordering-Maps.aspx)  
(01/01/23, 2.4, \$4.80)

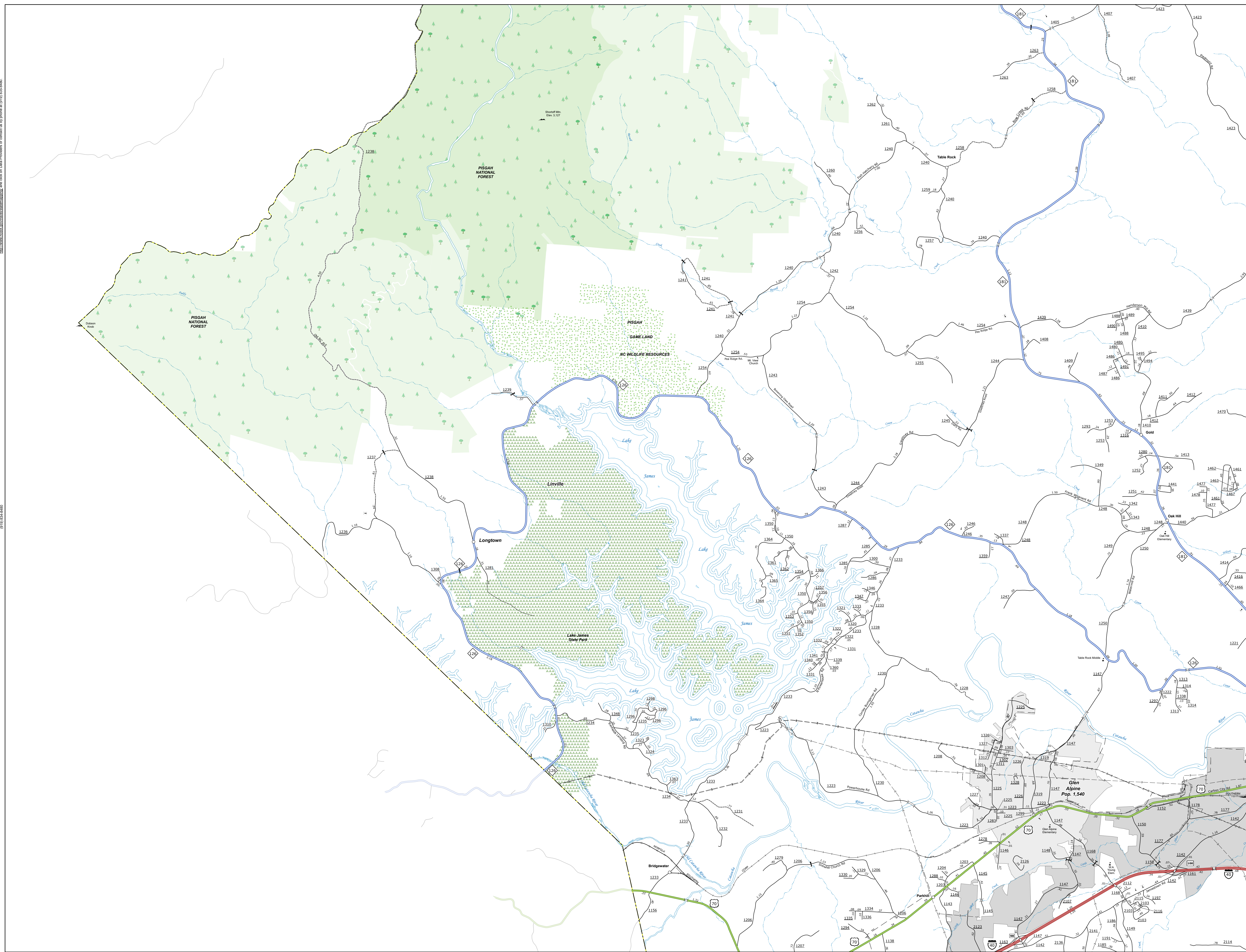
[illegible]

SCALE





COPIES OF THIS MAP ARE AVAILABLE  
TO THE PUBLIC AT NOMINAL COST:  
[mappingsupport@ncdot.gov](mailto:mappingsupport@ncdot.gov)  
[https://connect.ncdot.gov/resources/  
State-Mapping/Pages/Ordering-Maps.aspx](https://connect.ncdot.gov/resources/State-Mapping/Pages/Ordering-Maps.aspx)  
(919) 834-8460

[illegible]

SCALE



NORTH CAROLINA PLANE COORDINATE SYSTEM  
LAMBERT CONFORMAL CONIC PROJECTION



COPIES OF THIS MAP ARE AVAILABLE  
TO THE PUBLIC AT NOMINAL COST:  
[mappingsupport@nodot.gov](mailto:mappingsupport@nodot.gov)  
[https://connect.nodot.gov/resources/  
State-Mapping/Pages/Ordering-Maps.aspx](https://connect.nodot.gov/resources/State-Mapping/Pages/Ordering-Maps.aspx)

[illegible]

SCALE

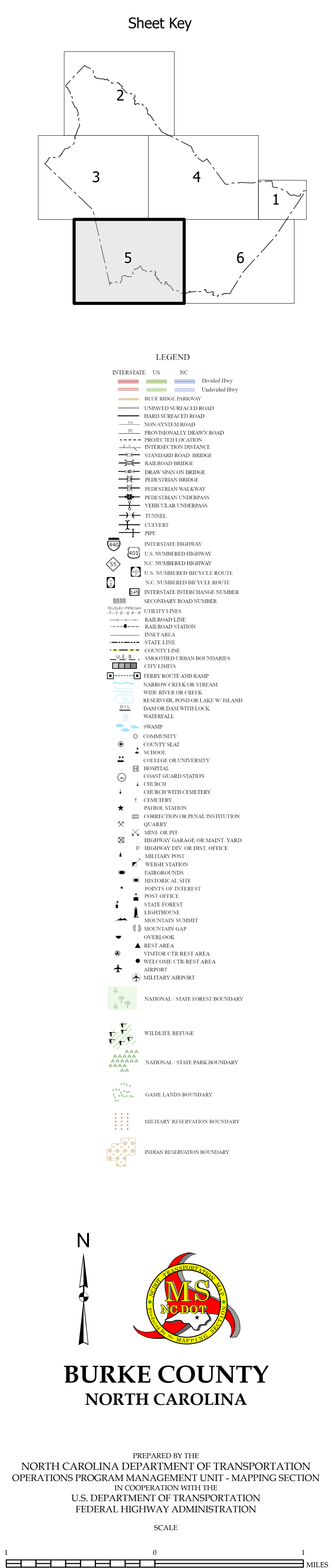
1 0 1

MILES

NORTH CAROLINA PLANE COORDINATE SYSTEM  
LAMBERT CONFORMAL CONIC PROJECTION



COPIES OF THIS MAP ARE AVAILABLE  
TO THE PUBLIC AT NOMINAL COST:  
[mappingsupport@nodot.gov](mailto:mappingsupport@nodot.gov)  
[https://connect.nodot.gov/resources/  
State-Mapping/Pages/Ordering-Maps.aspx](https://connect.nodot.gov/resources/State-Mapping/Pages/Ordering-Maps.aspx)  
00101 22.4 \$450.





COPIES OF THIS MAP ARE AVAILABLE  
TO THE PUBLIC AT NOMINAL COST:

[illegible]

SCALE

