



PREPARED BY THE
NORTH CAROLINA DEPARTMENT OF TRANSPORTATION
OPERATIONS PROGRAM MANAGEMENT UNIT - MAPPING SECTION
IN COOPERATION WITH THE
U.S. DEPARTMENT OF TRANSPORTATION
FEDERAL HIGHWAY ADMINISTRATION



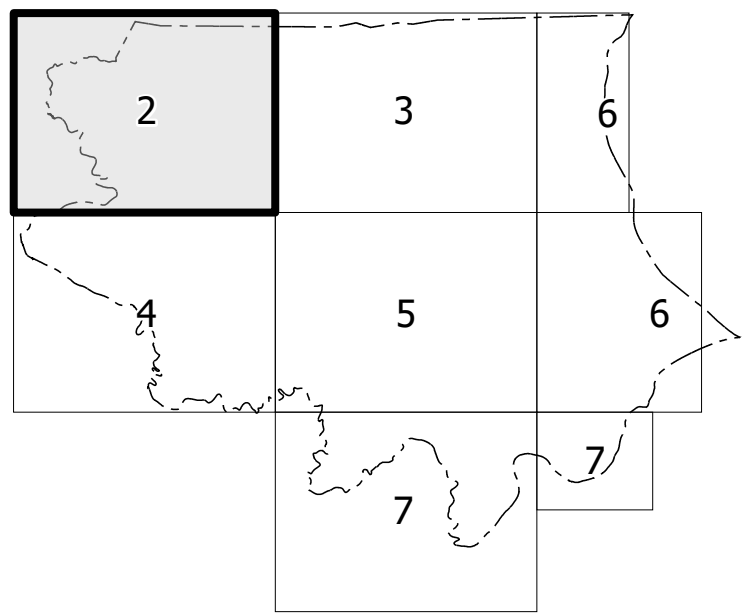
PAGE 1 OF 7

The Mapping Section's goal is to provide the most accurate and current information possible. Map data is compiled from numerous sources with varying dates of publication and map accuracy standards. As a result, the accuracy, currency and completeness of the data provided will vary. This map includes state-maintained roads and important non-system roads.

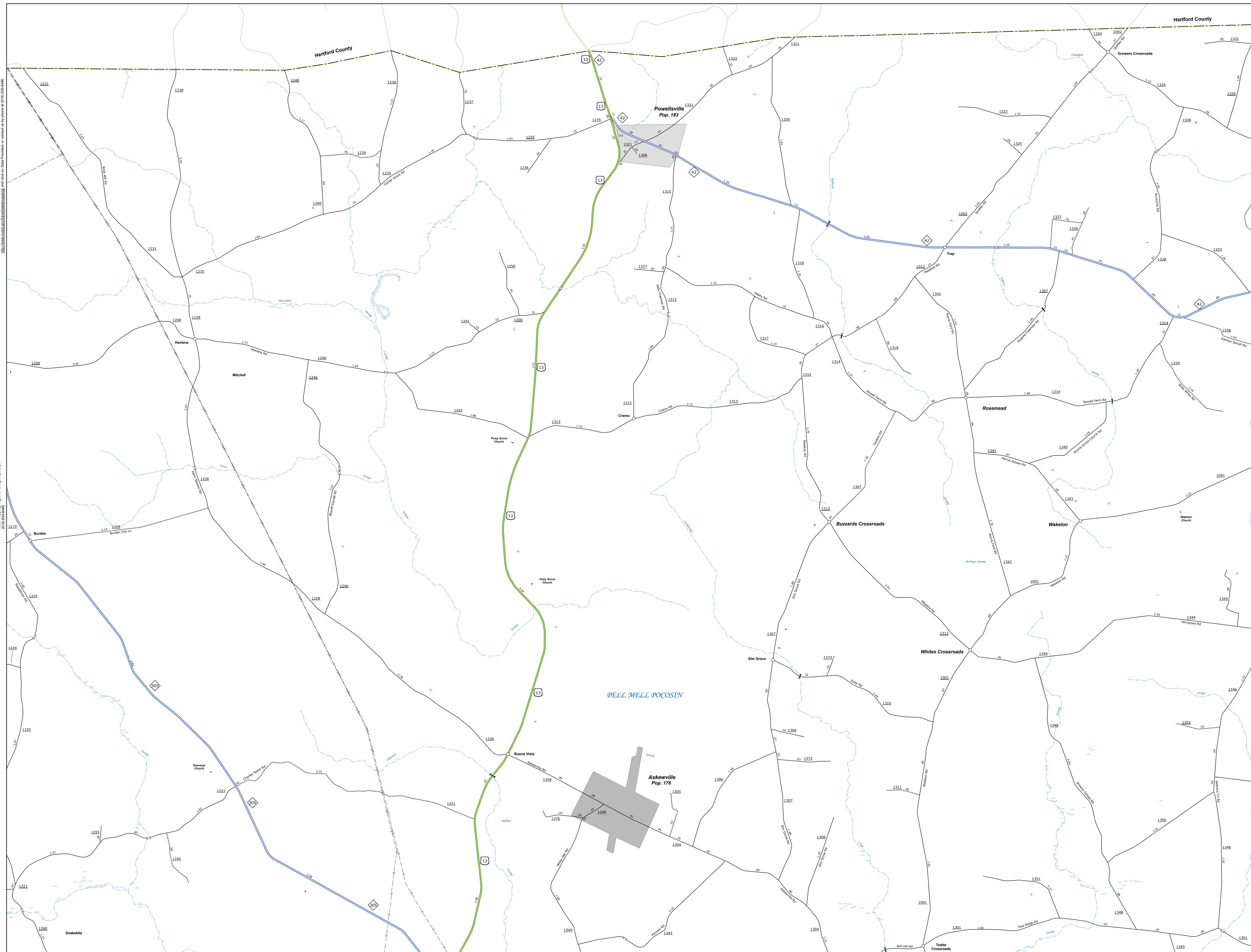
The information shown on this map was last updated in February 2024. For additional information, visit <http://www.ncdot.gov/travel/statemapping/> and click on Data Providers or contact us by phone at (919) 835-8480.

COPIES OF THIS MAP ARE AVAILABLE
TO THE PUBLIC AT NOMINAL COST:

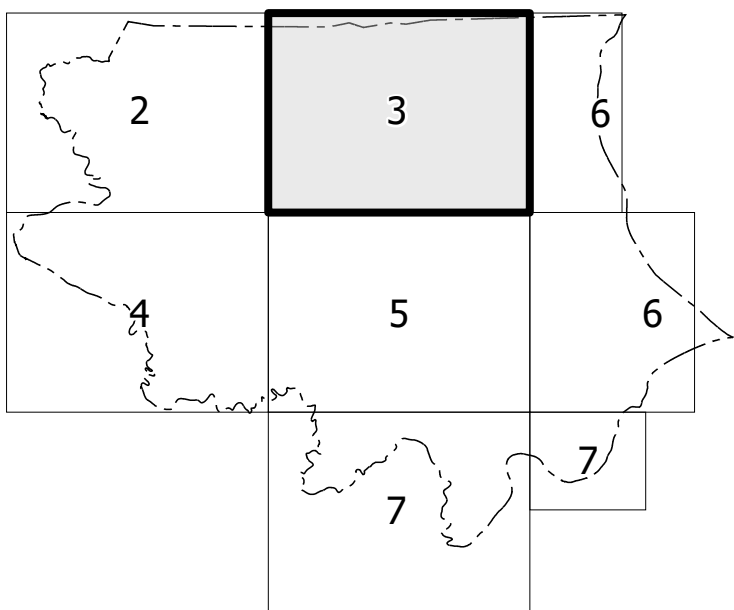
mappingsupport@nodot.gov
<https://connect.nodot.gov/resources/State-Mapping/Pages/Ordering-Maps.aspx>
 (919) 834-8480



COPIES OF THIS MAP ARE AVAILABLE
TO THE PUBLIC AT NOMINAL COST:
mapingsupport@nodot.gov
[https://connect.nodot.gov/resources/
State-Mapping/Pages/Ordering-Maps.aspx](https://connect.nodot.gov/resources/State-Mapping/Pages/Ordering-Maps.aspx)



Sheet Key



LEGEND

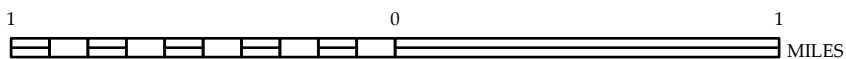
- | TERMINAL | US | NC |
|----------|----|----|
| | | |
| | | |
| | | |
| | | |
| | | |
| | | |
| | | |
| | | |
| | | |
| | | |
| | | |
| | | |
| | | |
| | | |
| | | |
| | | |
| | | |
| | | |
| | | |
| | | |
| | | |
| | | |
| | | |
| | | |
| | | |
| | | |
| | | |
| | | |
| | | |
| | | |
| | | |
| | | |
| | | |
| | | |
| | | |
| | | |
| | | |
| | | |
| | | |
| | | |
| | | |
| | | |
| | | |
| | | |
| | | |
| | | |
| | | |
| | | |
| | | |
| | | |
| | | |
| | | |
| | | |
| | | |
| | | |
| | | |
| | | |
| | | |
| | | |
| | | |
| | | |
| | | |
| | | |
| | | |
| | | |
| | | |
| | | |
| | | |
| | | |
| | | |
| | | |
| | | |
| | | |
| | | |
| | | |
| | | |
| | | |
| | | |
| | | |
| | | |
| | | |
| | | |
| | | |
| | | |
| | | |
| | | |
| | | |
| | | |
| | | |
| | | |
| | | |
| | | |
| | | |
| | | |
| | | |
| | | |
| | | |
| | | |
| | | |
| | | |
| | | |
| | | |
| | | |
| | | |
| | | |
| | | |
| | | |
| | | |
| | | |
| | | |
| | | |
| | | |
| | | |



BERTIE COUNTY
NORTH CAROLINA

PREPARED BY THE
NORTH CAROLINA DEPARTMENT OF TRANSPORTATION
OPERATIONS PROGRAM MANAGEMENT UNIT - MAPPING SECTION
IN COOPERATION WITH THE
U.S. DEPARTMENT OF TRANSPORTATION
FEDERAL HIGHWAY ADMINISTRATION

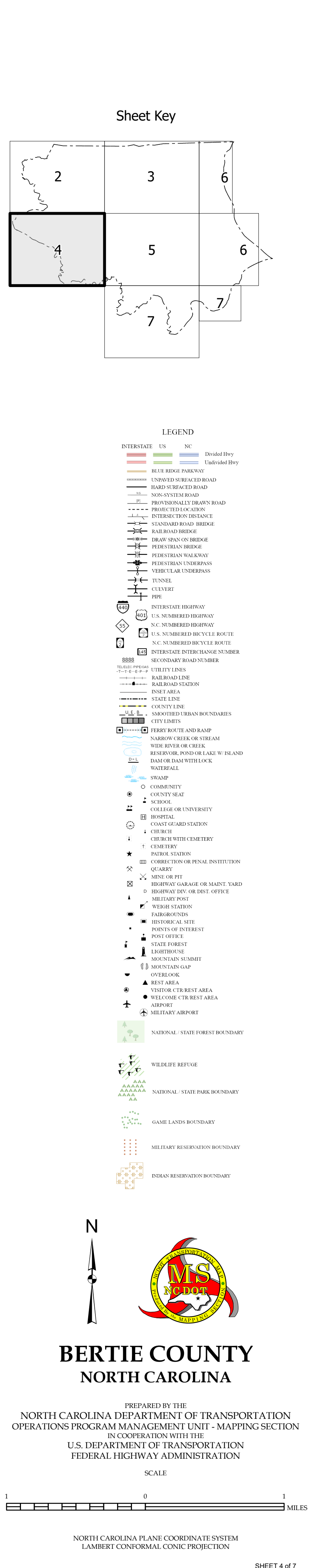
SCALE



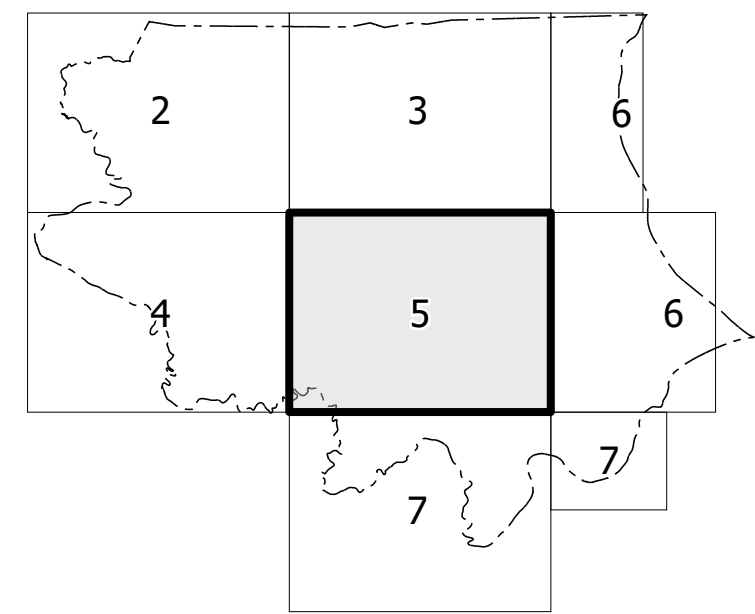
NORTH CAROLINA PLANE COORDINATE SYSTEM
LAMBERT CONFORMAL CONIC PROJECTION

COPIES OF THIS MAP ARE AVAILABLE
TO THE PUBLIC AT NOMINAL COST:

mapping@portlandodot.gov
[https://connect.portlandodot.gov/resources/
 State-Mapping/Pages/Ordering-Maps.aspx](https://connect.portlandodot.gov/resources/State-Mapping/Pages/Ordering-Maps.aspx)
 (919) 834-8480



COPIES OF THIS MAP ARE AVAILABLE
TO THE PUBLIC AT NOMINAL COST:



LEGEND

-

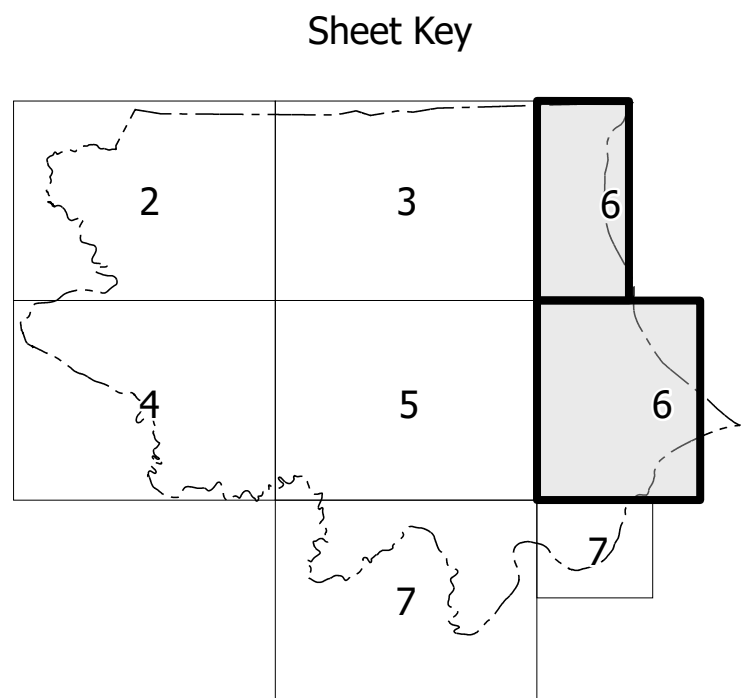
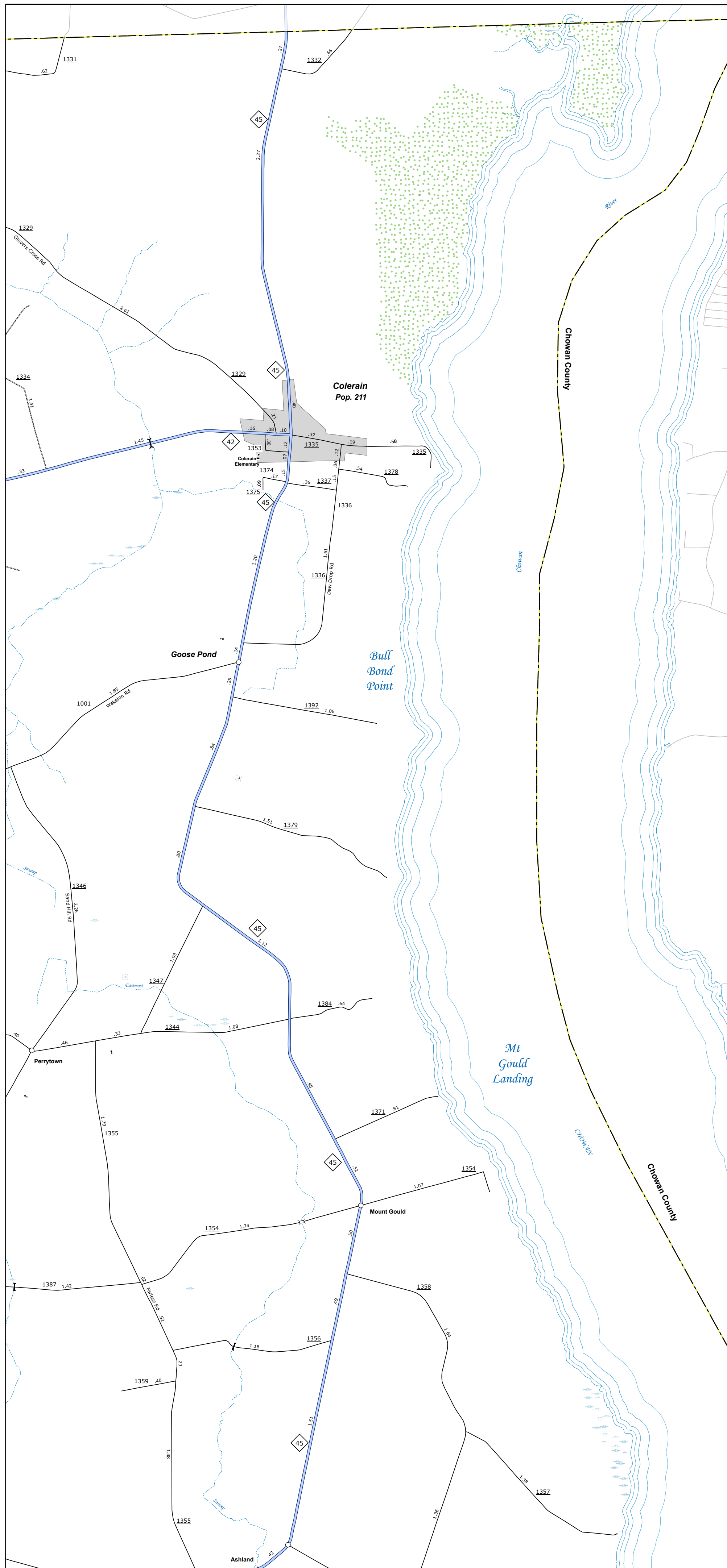
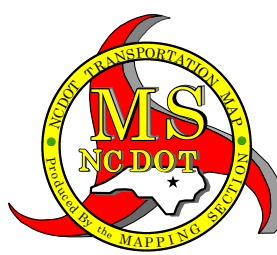
PREPARED BY THE
NORTH CAROLINA DEPARTMENT OF TRANSPORTATION
OPERATIONS PROGRAM MANAGEMENT UNIT - MAPPING SECTION
IN COOPERATION WITH THE
U.S. DEPARTMENT OF TRANSPORTATION
FEDERAL HIGHWAY ADMINISTRATION

SCALE

NORTH CAROLINA PLANE COORDINATE SYSTEM
LAMBERT CONFORMAL CONIC PROJECTION

DIVISION 1 DISTRICT 2 **BERTIE COUNTY** NORTH CAROLINA FIPS 015

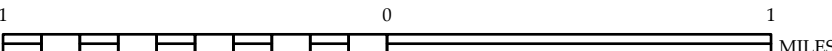
COPIES OF THIS MAP ARE AVAILABLE
TO THE PUBLIC AT NOMINAL COST:
mapingsupport@nodot.gov
[https://connect.nodot.gov/resources/
State-Mapping/Pages/Ordering-Maps.aspx](https://connect.nodot.gov/resources/State-Mapping/Pages/Ordering-Maps.aspx)

[illegible]

BERTIE COUNTY
NORTH CAROLINA

PREPARED BY THE
NORTH CAROLINA DEPARTMENT OF TRANSPORTATION
OPERATIONS PROGRAM MANAGEMENT UNIT - MAPPING SECTION
IN COOPERATION WITH THE
U.S. DEPARTMENT OF TRANSPORTATION
FEDERAL HIGHWAY ADMINISTRATION

SCALE



NORTH CAROLINA PLANE COORDINATE SYSTEM
LAMBERT CONFORMAL CONIC PROJECTION

COPIES OF THIS MAP ARE AVAILABLE
TO THE PUBLIC AT NOMINAL COST:

maphsupport@nodot.gov
https://connect.nodot.gov/resources/
State-Mapping/Pages/Ordering-Maps.aspx
10-103 824 81430

