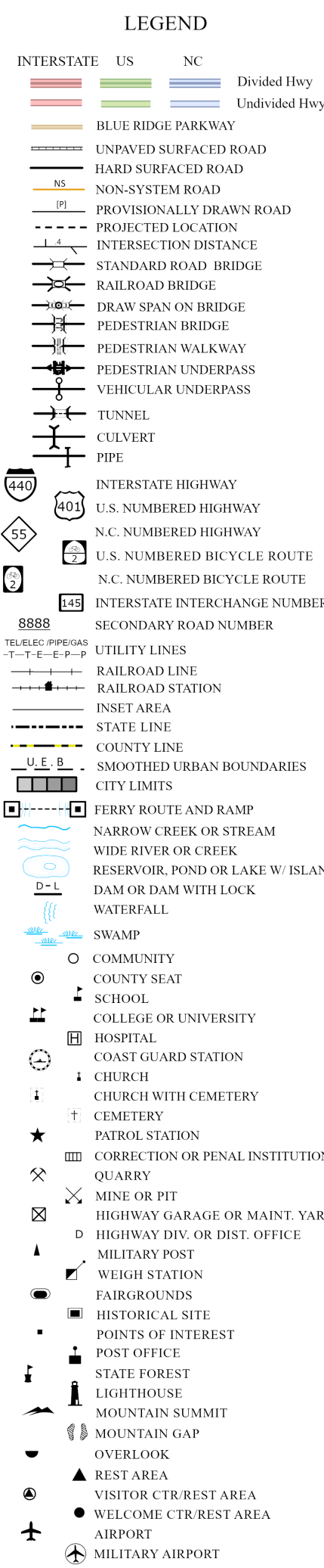
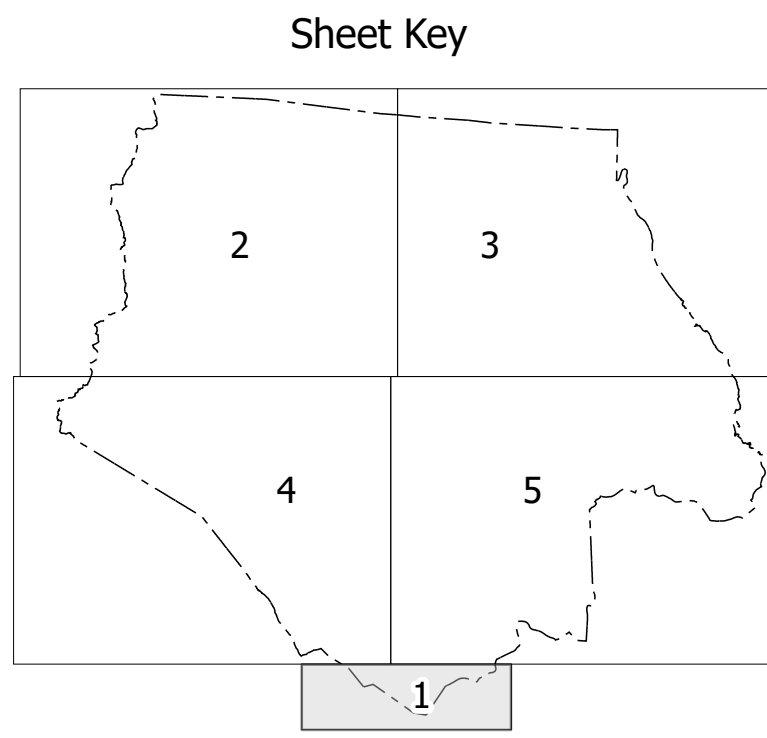
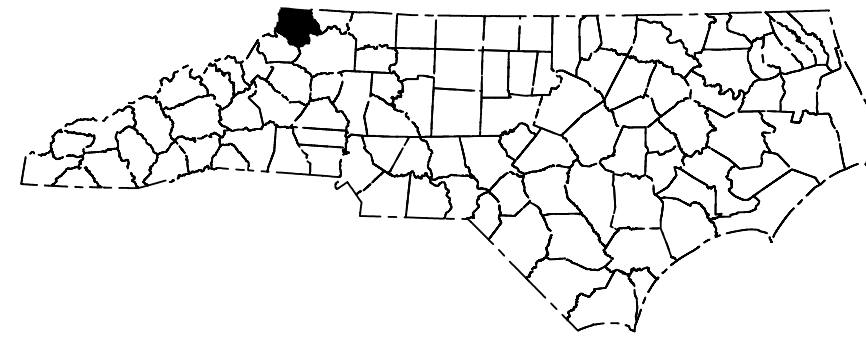
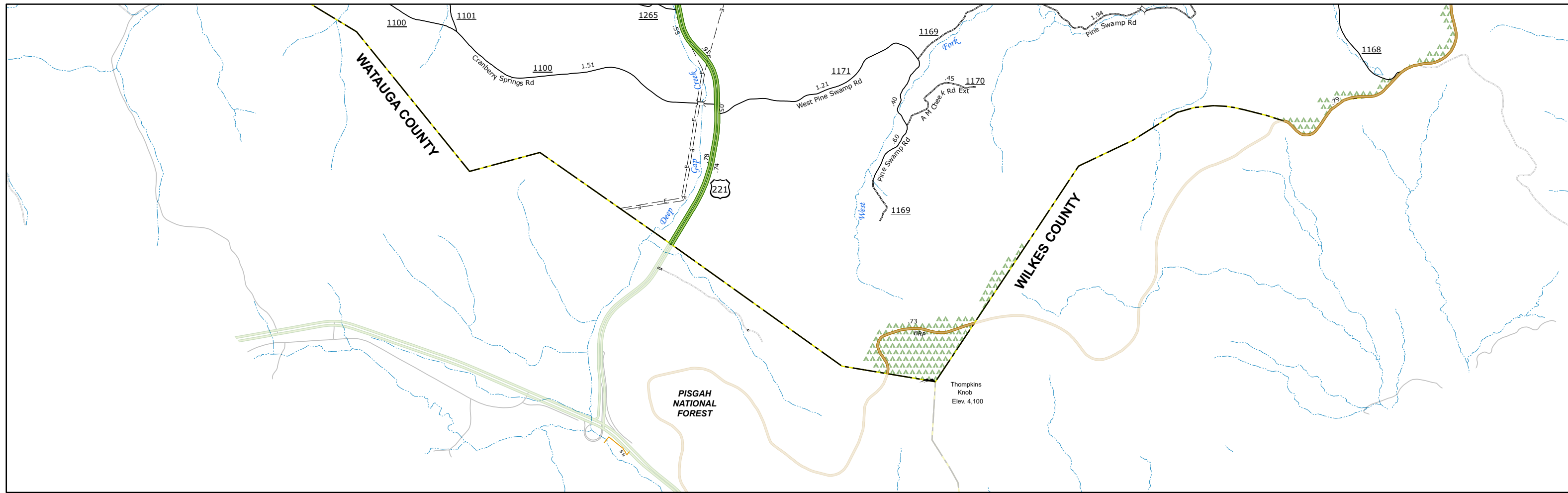
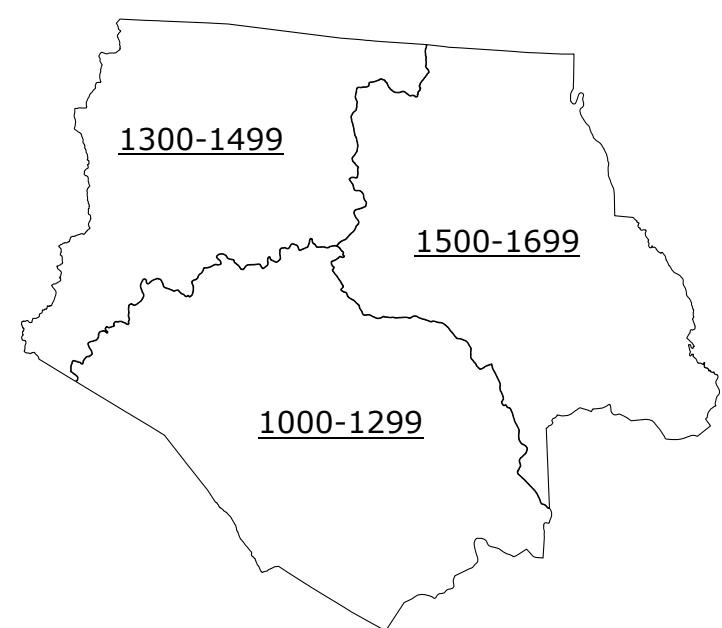


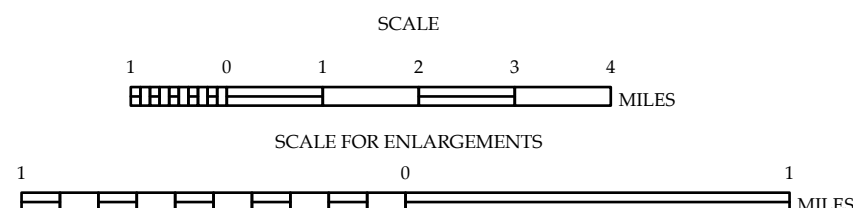
TERMS OF USE: The Mapping Section's goal is to provide the most accurate and current information possible. Map data is compiled from numerous sources with varying dates of publication and map accuracy standards. As a result, the accuracy, currency, and completeness of the data provided will vary. The North Carolina Department of Transportation shall not be held liable for any errors in the map data. This map is provided "as is" without warranty of any kind, either expressed or implied, including, but not limited to, the accuracy and completeness. For details of the map or additional map products, visit <https://www.ncdot.gov/resources/State-Mapping>.

COPIES OF THIS MAP ARE AVAILABLE TO THE
PUBLIC AT NOMINAL COST. CONTACT US TO ORDER:
mapsupport@ncdi.gov
<http://www.ncdi.gov/resources/State-Mapping-ProcessOrdering.aspx>
(919) 834-8480



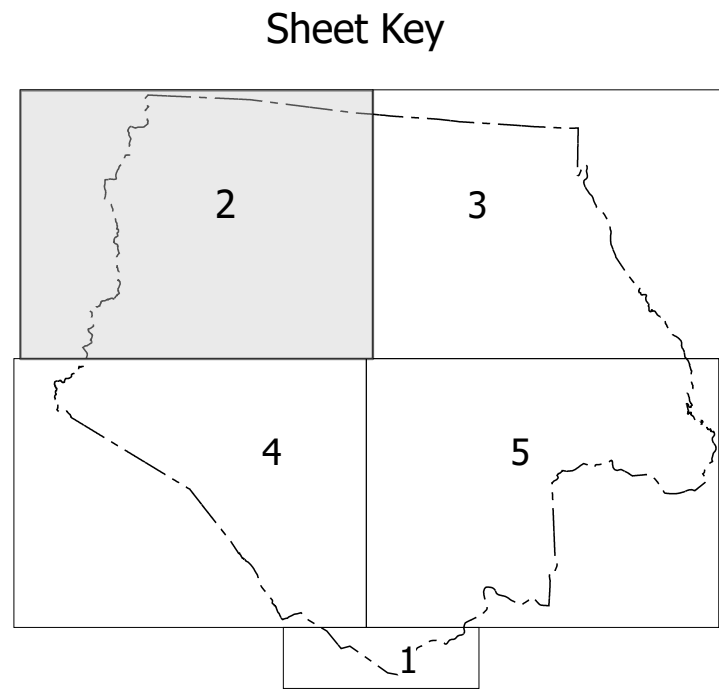
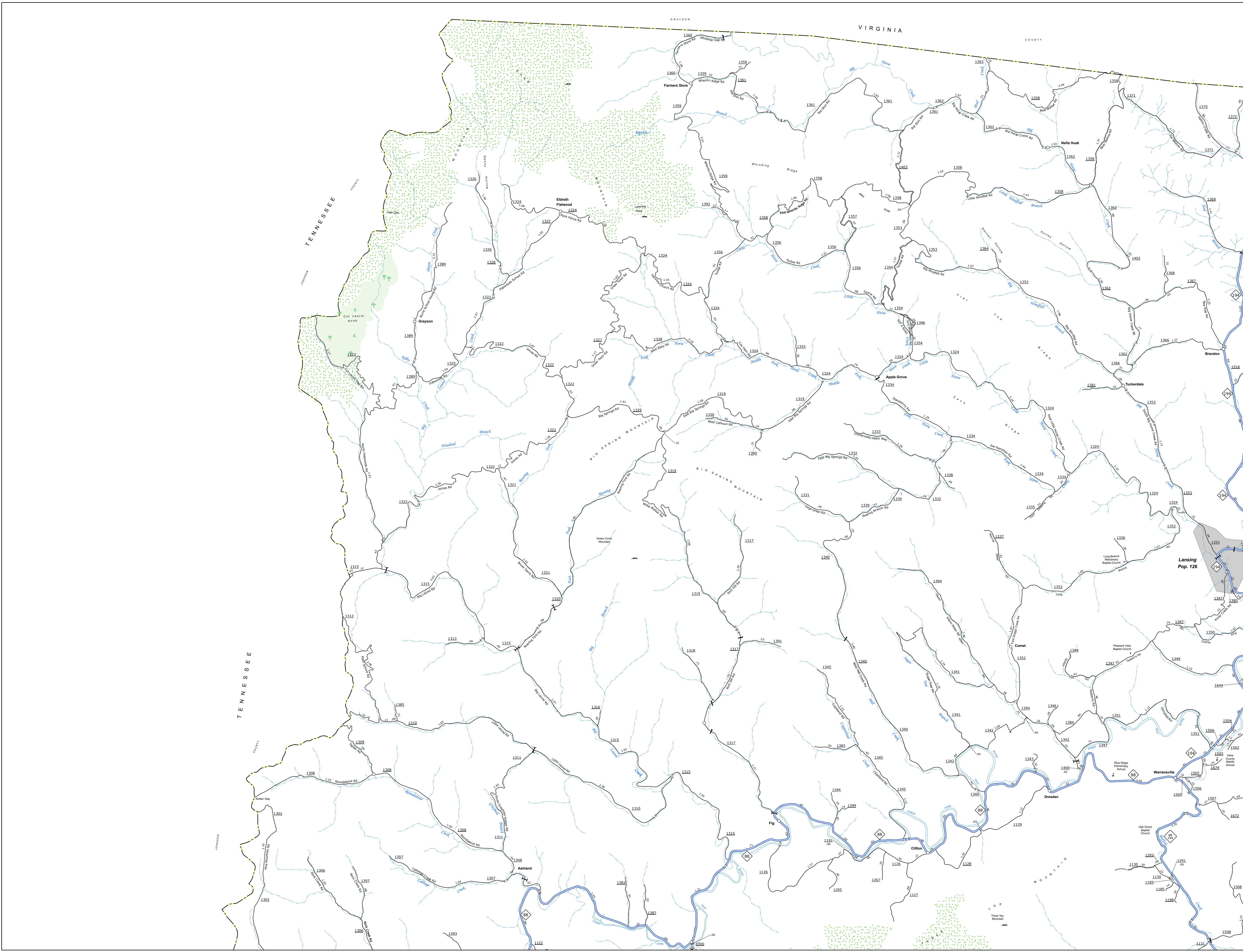
ASHE COUNTY
NORTH CAROLINA

PREPARED BY THE
NORTH CAROLINA DEPARTMENT OF TRANSPORTATION
OPERATIONS PROGRAM MANAGEMENT UNIT - MAPPING SECTION
IN COOPERATION WITH THE
U.S. DEPARTMENT OF TRANSPORTATION
FEDERAL HIGHWAY ADMINISTRATION

NORTH CAROLINA PLANE COORDINATE SYSTEM
LAMBERT CONFORMAL CONIC PROJECTION

TERMS OF USE: This mapping system is provided as a service to the public and is not intended to be used for any purpose other than mapping. Map data is compiled from the data provided with this system. The North Carolina Department of Transportation shall not be held liable for any errors in the map data. This map is provided as a service to the public and is not intended to be used for any purpose other than mapping. For a full copy of this map or additional map products, visit <http://www.ncdot.gov>.

COPYRIGHT © 2011 BY THE NORTH CAROLINA DEPARTMENT OF TRANSPORTATION. ALL RIGHTS RESERVED. THIS MAP IS THE PROPERTY OF THE NORTH CAROLINA DEPARTMENT OF TRANSPORTATION AND IS NOT TO BE REPRODUCED OR TRANSMITTED IN ANY FORM OR BY ANY MEANS, ELECTRONIC OR MECHANICAL, WITHOUT PERMISSION IN WRITING FROM THE NORTH CAROLINA DEPARTMENT OF TRANSPORTATION. FOR A FULL COPY OF THIS MAP OR ADDITIONAL MAP PRODUCTS, VISIT <http://www.ncdot.gov>.

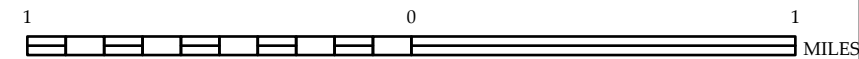


- LEGEND
- INTERSTATE: US, NC, Divided Hwy, Undivided Hwy
 - BLUE RIDGE PARKWAY
 - UNPAVED SURFACED ROAD
 - HARD SURFACED ROAD
 - NON-SYSTEM ROAD
 - PROVISIONALLY DRAWN ROAD
 - PROJECTED LOCATION
 - INTERSECTION DISTANCE
 - STANDARD ROAD BRIDGE
 - RAILROAD BRIDGE
 - DRAW SPAN ON BRIDGE
 - PEDESTRIAN BRIDGE
 - PEDESTRIAN WALKWAY
 - PEDESTRIAN UNDERPASS
 - VEHICULAR UNDERPASS
 - TUNNEL
 - CULVERT
 - PIPE
 - INTERSTATE HIGHWAY
 - U.S. NUMBERED HIGHWAY
 - N.C. NUMBERED HIGHWAY
 - U.S. NUMBERED BICYCLE ROUTE
 - N.C. NUMBERED BICYCLE ROUTE
 - INTERSTATE INTERCHANGE NUMBER
 - SECONDARY ROAD NUMBER
 - UTILITY LINES
 - RAILROAD LINE
 - RAILROAD STATION
 - INSIDE AREA
 - STATE LINE
 - COUNTY LINE
 - SMOOTHED URBAN BOUNDARIES
 - CITY LIMITS
 - FERRY ROUTE AND RAMP
 - NARROW CREEK OR STREAM
 - WIDE RIVER OR CREEK
 - RESERVOIR, POND OR LAKE W/ ISLAND
 - DAM OR DAM WITH LOCK
 - WATERFALL
 - SWAMP
 - COMMUNITY
 - COUNTY SEAT
 - SCHOOL
 - COLLEGE OR UNIVERSITY
 - HOSPITAL
 - COAST GUARD STATION
 - CHURCH
 - CHURCH WITH CEMETERY
 - CEMETERY
 - PATROL STATION
 - CORRECTION OR PENAL INSTITUTION
 - QUARRY
 - MINE OR PIT
 - HIGHWAY GARAGE OR MAINT. YARD
 - HIGHWAY DIV. OR DIST. OFFICE
 - MILITARY POST
 - WEIGH STATION
 - FARMS/GROUNDS
 - HISTORICAL SITE
 - POINTS OF INTEREST
 - POST OFFICE
 - STATE FOREST
 - LIGHTHOUSE
 - MOUNTAIN SUMMIT
 - MOUNTAIN GAP
 - OVERLOOK
 - REST AREA
 - VISITOR CTR./REST AREA
 - WELCOME CTR./REST AREA
 - AIRPORT
 - MILITARY AIRPORT
 - NATIONAL / STATE FOREST BOUNDARY
 - WILDLIFE REFUGE
 - NATIONAL / STATE PARK BOUNDARY
 - GAME LANDS BOUNDARY
 - MILITARY RESERVATION BOUNDARY
 - INDIAN RESERVATION BOUNDARY



ASHE COUNTY NORTH CAROLINA

PREPARED BY THE
NORTH CAROLINA DEPARTMENT OF TRANSPORTATION
OPERATIONS PROGRAM MANAGEMENT UNIT - MAPPING SECTION
IN COOPERATION WITH THE
U.S. DEPARTMENT OF TRANSPORTATION
FEDERAL HIGHWAY ADMINISTRATION
SCALE

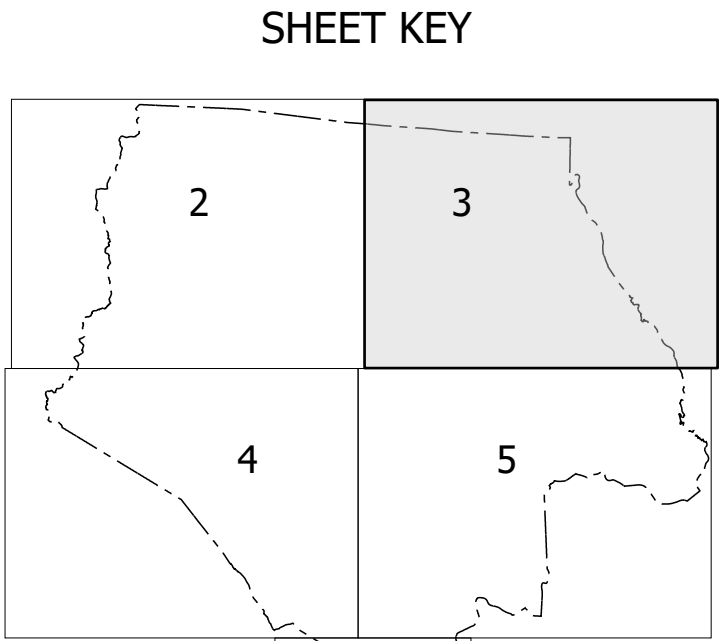
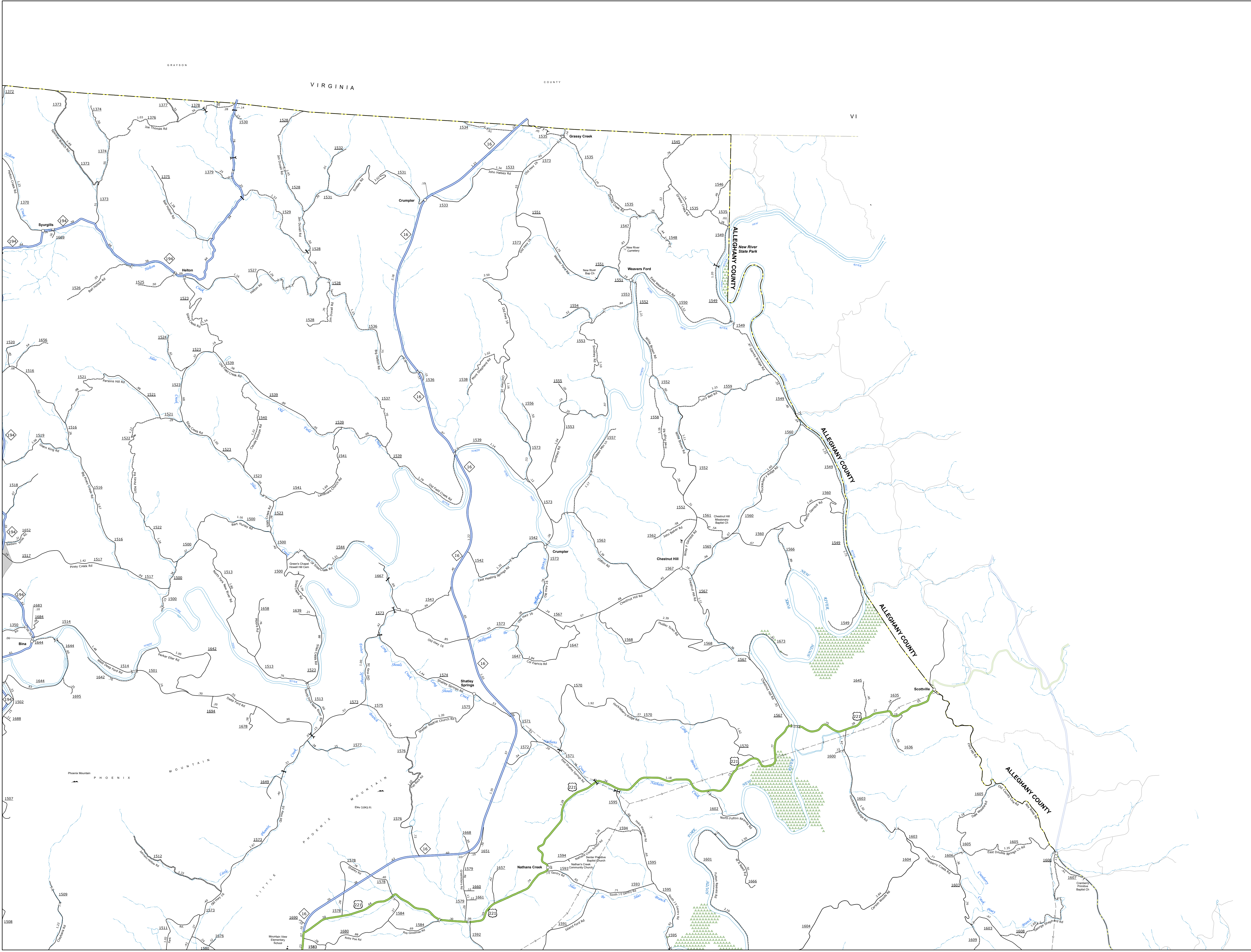


NORTH CAROLINA PLANE COORDINATE SYSTEM
LAMBERT CONFORMAL CONIC PROJECTION

SHEET 2 of 5

TERMS OF USE: The Mapping Services portal is to provide the most accurate and current information possible. Map data is compiled from numerous sources with varying degree of publication and map accuracy standards. Any use of the map data is at the user's discretion. The accuracy, currency, and completeness of the map cannot be guaranteed to the level of a legal document. The information shown on this map was last updated in June 2025. For digital copies of this map or additional map products, visit <https://www.ncdot.gov/transportation/mapping-services>.

COPIES OF THE MAP ARE AVAILABLE TO THE PUBLIC AT NO CHARGE. CONTACT US TO ORDER: maps@ncdot.gov or 1-800-368-6848. <https://www.ncdot.gov/transportation/mapping-services>

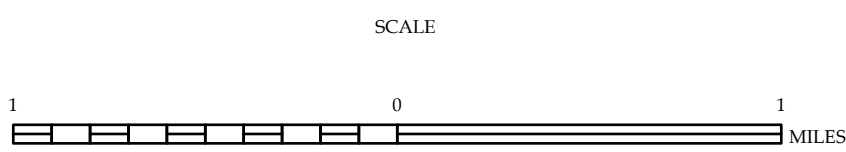


- LEGEND**
- INTERSTATE: US (red line), NC (green line), Divided Hwy (blue line with white center), Undivided Hwy (blue line)
 - BLUE RIDGE PARKWAY (blue line with white center)
 - UNPAVED SURFACED ROAD (dashed line)
 - HARD SURFACED ROAD (solid line)
 - NON-SYSTEM ROAD (dashed line with 'X' marks)
 - PROVISIONALLY DRAWN ROAD (dashed line with 'P' marks)
 - PROJECTED LOCATION (dashed line with 'P' marks)
 - INTERSECTION DISTANCE (line with 'X' marks)
 - STANDARD ROAD BRIDGE (line with 'X' marks)
 - RAILROAD BRIDGE (line with 'X' marks)
 - DRAW SPAN ON BRIDGE (line with 'X' marks)
 - PEDESTRIAN BRIDGE (line with 'X' marks)
 - PEDESTRIAN WALKWAY (line with 'X' marks)
 - PEDESTRIAN UNDERPASS (line with 'X' marks)
 - VEHICULAR UNDERPASS (line with 'X' marks)
 - TUNNEL (line with 'X' marks)
 - CULVERT (line with 'X' marks)
 - PIPE (line with 'X' marks)
 - INTERSTATE HIGHWAY (red line with shield)
 - U.S. NUMBERED HIGHWAY (green line with shield)
 - N.C. NUMBERED HIGHWAY (blue line with shield)
 - U.S. NUMBERED BICYCLE ROUTE (blue line with shield)
 - N.C. NUMBERED BICYCLE ROUTE (blue line with shield)
 - INTERSTATE INTERCHANGE NUMBER (red line with shield)
 - SECONDARY ROAD NUMBER (blue line with shield)
 - UTILITY LINES (dashed line with 'X' marks)
 - RAILROAD LINE (dashed line with 'X' marks)
 - RAILROAD STATION (dashed line with 'X' marks)
 - INSIT AREA (dashed line with 'X' marks)
 - STATE LINE (dashed line with 'X' marks)
 - COUNTY LINE (dashed line with 'X' marks)
 - SMOOTHED URBAN BOUNDARIES (dashed line with 'X' marks)
 - CITY LIMITS (dashed line with 'X' marks)
 - TERMINUS ROUTE AND RAMP (dashed line with 'X' marks)
 - NARROW CREEK OR STREAM (dashed line with 'X' marks)
 - WIDE RIVER OR CREEK (dashed line with 'X' marks)
 - RESERVOIR, POND OR LAKE W/ ISLAND (dashed line with 'X' marks)
 - DAM OR DAM WITH LOCK (dashed line with 'X' marks)
 - WATERFALL (dashed line with 'X' marks)
 - SWAMP (dashed line with 'X' marks)
 - COMMUNITY (dashed line with 'X' marks)
 - COUNTY SEAT (dashed line with 'X' marks)
 - SCHOOL (dashed line with 'X' marks)
 - COLLEGE OR UNIVERSITY (dashed line with 'X' marks)
 - HOSPITAL (dashed line with 'X' marks)
 - COAST GUARD STATION (dashed line with 'X' marks)
 - CHURCH (dashed line with 'X' marks)
 - CHURCH WITH CEMETERY (dashed line with 'X' marks)
 - CEMETERY (dashed line with 'X' marks)
 - PATROL STATION (dashed line with 'X' marks)
 - CORRECTION OR PENAL INSTITUTION (dashed line with 'X' marks)
 - QUARRY (dashed line with 'X' marks)
 - MINE OR PIT (dashed line with 'X' marks)
 - HIGHWAY GARAGE OR MAINT. YARD (dashed line with 'X' marks)
 - HIGHWAY DIV. OR DIST. OFFICE (dashed line with 'X' marks)
 - MILITARY POST (dashed line with 'X' marks)
 - WEIGH STATION (dashed line with 'X' marks)
 - FAIRGROUNDS (dashed line with 'X' marks)
 - HISTORICAL SITE (dashed line with 'X' marks)
 - POINTS OF INTEREST (dashed line with 'X' marks)
 - POST OFFICE (dashed line with 'X' marks)
 - STATE FOREST (dashed line with 'X' marks)
 - LIGHTHOUSE (dashed line with 'X' marks)
 - MOUNTAIN SUMMIT (dashed line with 'X' marks)
 - MOUNTAIN GAP (dashed line with 'X' marks)
 - OVERLOOK (dashed line with 'X' marks)
 - REST AREA (dashed line with 'X' marks)
 - VISITOR CTR/REST AREA (dashed line with 'X' marks)
 - WELCOME CTR/REST AREA (dashed line with 'X' marks)
 - AIRPORT (dashed line with 'X' marks)
 - MILITARY AIRPORT (dashed line with 'X' marks)
 - NATIONAL / STATE FOREST BOUNDARY (dashed line with 'X' marks)
 - WILDLIFE REFUGE (dashed line with 'X' marks)
 - NATIONAL / STATE PARK BOUNDARY (dashed line with 'X' marks)
 - GAME LANDS BOUNDARY (dashed line with 'X' marks)
 - MILITARY RESERVATION BOUNDARY (dashed line with 'X' marks)
 - INDIAN RESERVATION BOUNDARY (dashed line with 'X' marks)



ASHE COUNTY NORTH CAROLINA

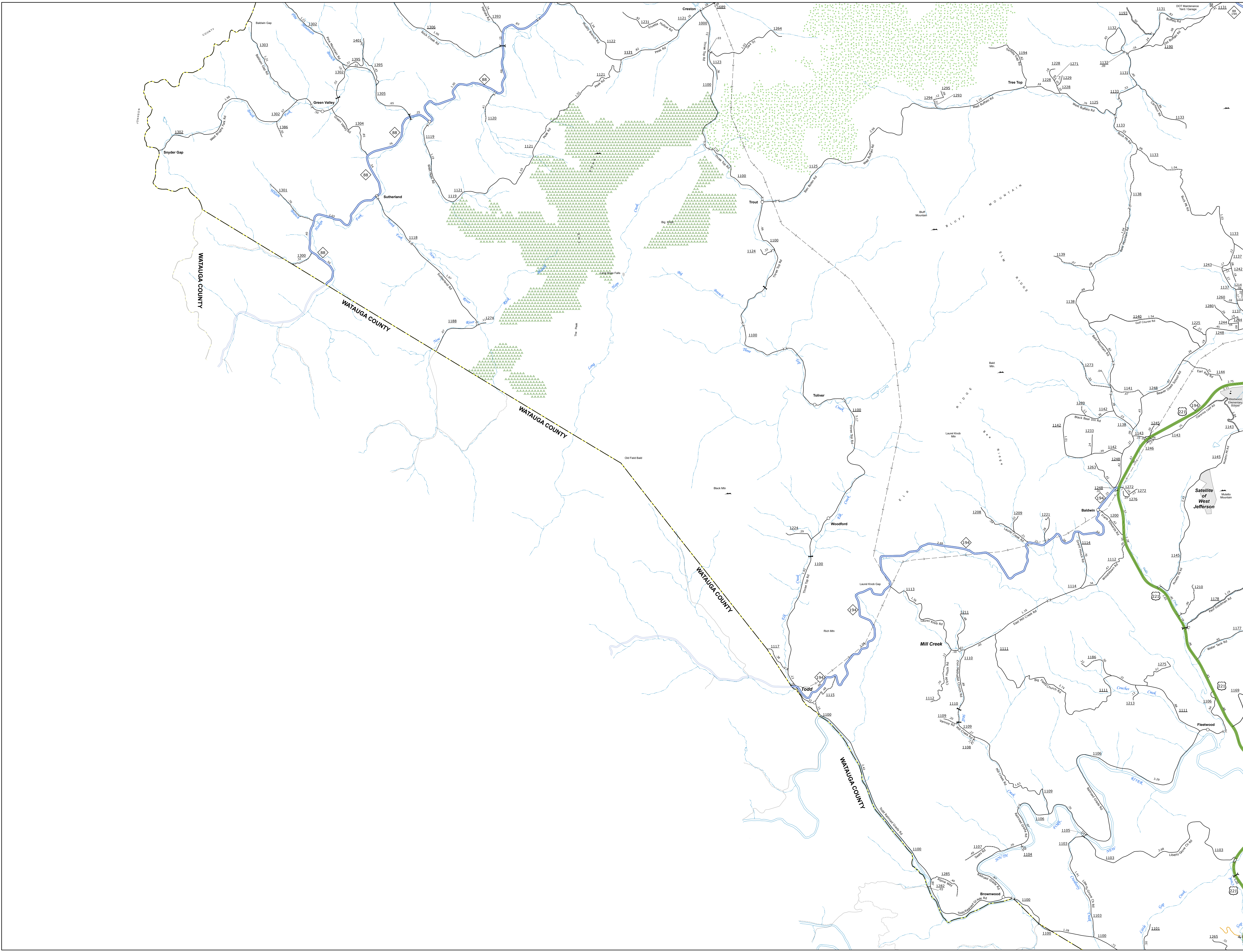
PREPARED BY THE
NORTH CAROLINA DEPARTMENT OF TRANSPORTATION
OPERATIONS PROGRAM MANAGEMENT UNIT - MAPPING SECTION
IN COOPERATION WITH THE
U.S. DEPARTMENT OF TRANSPORTATION
FEDERAL HIGHWAY ADMINISTRATION



NORTH CAROLINA PLANE COORDINATE SYSTEM
LAMBERT CONFORMAL CONIC PROJECTION

TERMS OF USE: The Mapbox Sector's goal is to provide the most accurate and current information possible. Map data is compiled from numerous sources with varying dates of publication and map accuracy standards. As a result, the accuracy, currency and completeness of the information shown on this map may vary. The information shown on this map was last updated in June 2025.

COPIES OF THIS MAP ARE AVAILABLE TO THE PUBLIC AT NOMINAL COST. CONTACT US TO ORDER: PublicInformation@ncdot.gov OR BY PHONE: 1-800-368-6848



Sheet Key

LEGEND

INTERSTATE	US	NC	Divided Hwy
UNPAVED SURFACED ROAD	BLUE RIDGE PARKWAY	UNDIVIDED HWY	
HARD SURFACED ROAD			
NON-SYSTEM ROAD			
PROVISIONALLY DRAWN ROAD			
PROPOSED LOCATION			
INTERSECTION DISTANCE			
STANDARD ROAD BRIDGE			
RAILROAD BRIDGE			
DRIVE SPAN ON BRIDGE			
PEDESTRIAN BRIDGE			
PEDESTRIAN WALKWAY			
VEHICULAR UNDERPASS			
TUNNEL			
CULVERT			
PIPE			
INTERSTATE HIGHWAY			
U.S. NUMBERED HIGHWAY			
N.C. NUMBERED HIGHWAY			
U.S. NUMBERED BICYCLE ROUTE			
N.C. NUMBERED BICYCLE ROUTE			
INTERSTATE INTERCHANGE NUMBER			
SECONDARY ROAD NUMBER			
UTILITY LINES			
RAILROAD LINE			
RAILROAD STATION			
INSET AREA			
STATE LINE			
COUNTY LINE			
SMOOTHED URBAN BOUNDARIES			
CITY LIMITS			
FERRY ROUTE AND RAMP			
NARROW CREEK OR STREAM			
WIDE RIVER OR CREEK			
RESERVOIR, POND OR LAKE W/ ISLAND			
DAM OR DAM WITH LOCK			
WATERFALL			
SWAMP			
COMMUNITY			
COUNTY SEAT			
SCHOOL			
COLLEGE OR UNIVERSITY			
HOSPITAL			
COAST GUARD STATION			
CHURCH			
CHURCH WITH CEMETERY			
CEMETERY			
PATROL STATION			
CORRECTION OR PENAL INSTITUTION			
QUARRY			
MINE OR PIT			
HIGHWAY GARAGE OR MAINT. YARD			
HIGHWAY DIV. OR DIST. OFFICE			
MILITARY POST			
WEIGH STATION			
FAIRGROUNDS			
HISTORICAL SITE			
POINTS OF INTEREST			
POST OFFICE			
STATE FOREST			
LIGHTHOUSE			
MOUNTAIN SUMMIT			
MOUNTAIN GAP			
OVERLOOK			
REST AREA			
VISITOR CTR/REST AREA			
WELCOME CTR/REST AREA			
AIRPORT			
MILITARY AIRPORT			
NATIONAL / STATE FOREST BOUNDARY			
WILDLIFE REFUGE			
NATIONAL / STATE PARK BOUNDARY			
GAME LANDS BOUNDARY			
MILITARY RESERVATION BOUNDARY			
INDIAN RESERVATION BOUNDARY			

ASHE COUNTY

NORTH CAROLINA

PREPARED BY THE
NORTH CAROLINA DEPARTMENT OF TRANSPORTATION
OPERATIONS PROGRAM MANAGEMENT UNIT - MAPPING SECTION
IN COOPERATION WITH THE
U.S. DEPARTMENT OF TRANSPORTATION
FEDERAL HIGHWAY ADMINISTRATION

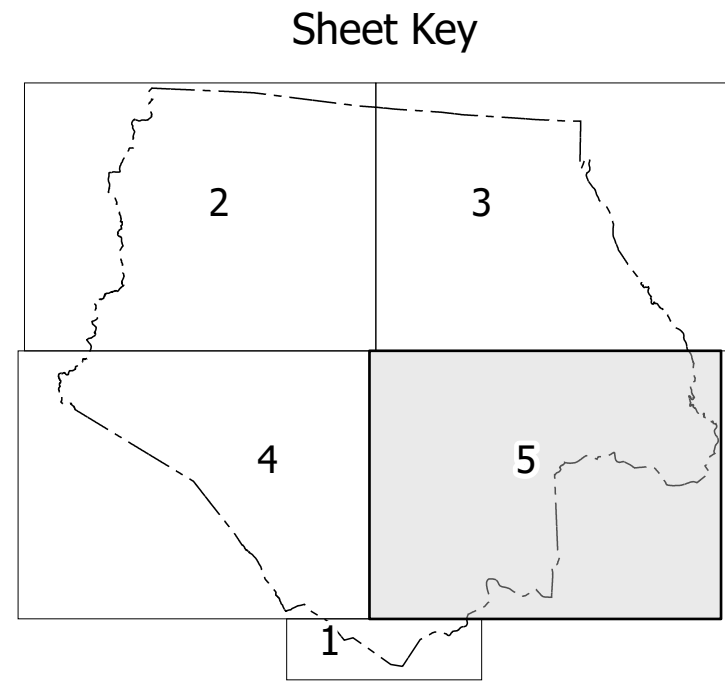
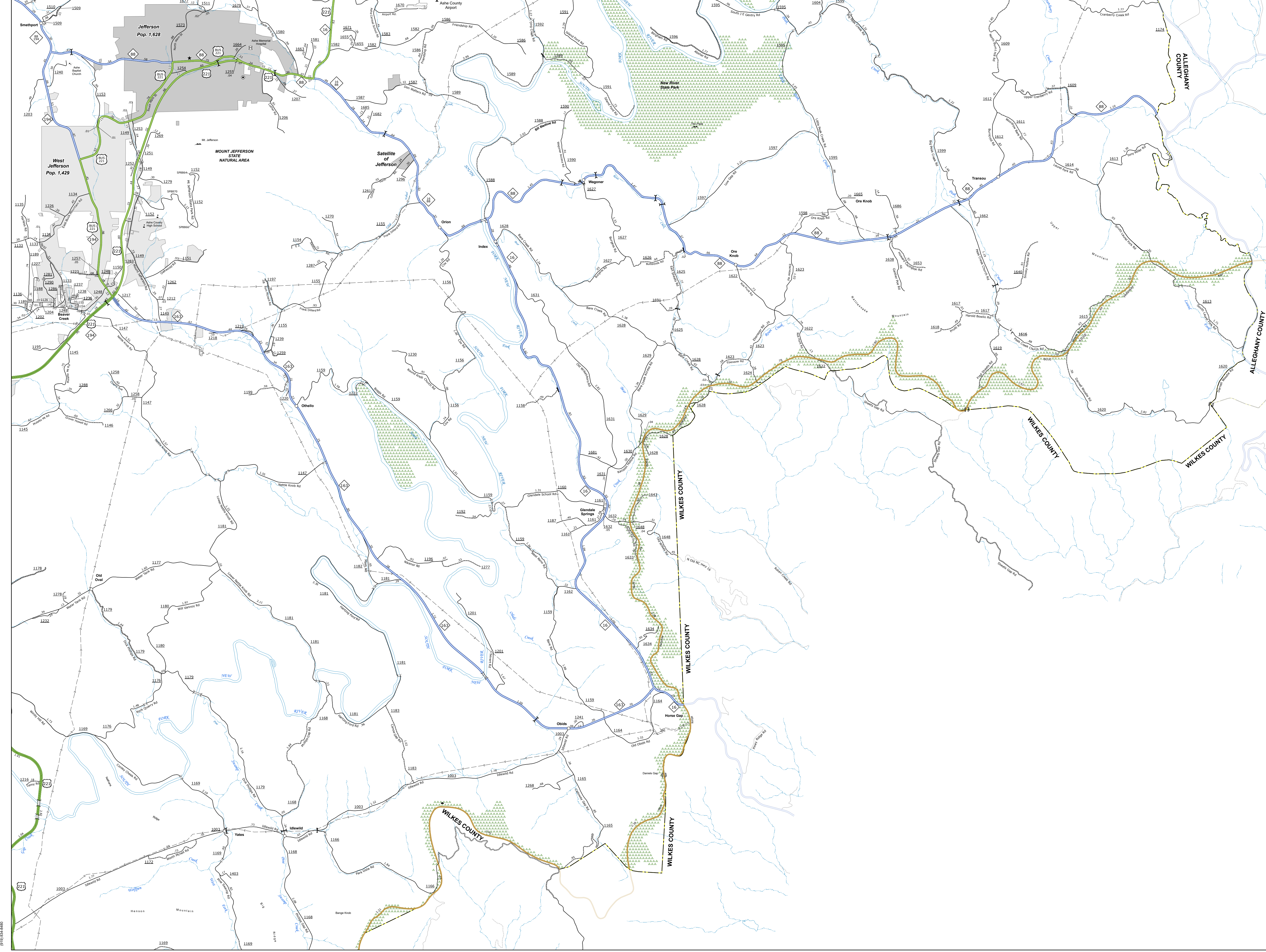
SCALE

NORTH CAROLINA PLANE COORDINATE SYSTEM
LAMBERT CONFORMAL CONIC PROJECTION

SHEET 4 of 5

TERMS OF USE: The Mapping Section's goal is to provide the most accurate and current information possible. Map data is compiled from numerous sources with varying dates of publication and map accuracy standards. As a result, the accuracy, currency, and completeness of the information cannot be guaranteed. The information shown on this map was last updated in June 2025.

For more information, visit <https://www.ncdot.gov/transportation/transportation-planning-and-policy/transportation-planning-and-policy.aspx>



- LEGEND**
- INTERSTATE US NC Divided Hwy Undivided Hwy
 - BLUE RIDGE PARKWAY
 - UNPAVED SURFACED ROAD
 - HARD SURFACED ROAD
 - NON-SYSTEM ROAD
 - PROVISIONALLY DRAWN ROAD
 - PROJECTED LOCATION
 - INTERSECTION DISTANCE
 - STANDARD ROAD BRIDGE
 - RAILROAD BRIDGE
 - DRAW SPAN ON BRIDGE
 - PEDESTRIAN BRIDGE
 - PEDESTRIAN WALKWAY
 - PEDESTRIAN UNDERPASS
 - VEHICULAR UNDERPASS
 - TUNNEL
 - CULVERT
 - PIPE
 - INTERSTATE HIGHWAY
 - U.S. NUMBERED HIGHWAY
 - N.C. NUMBERED HIGHWAY
 - U.S. NUMBERED BICYCLE ROUTE
 - N.C. NUMBERED BICYCLE ROUTE
 - INTERSTATE INTERCHANGE NUMBER
 - SECONDARY ROAD NUMBER
 - UTILITY LINES
 - RAILROAD LINE
 - RAILROAD STATION
 - INSET AREA
 - STATE LINE
 - COUNTY LINE
 - SMOOTHED URBAN BOUNDARIES
 - CITY LIMITS
 - FERRY ROUTE AND RAMP
 - NARROW CREEK OR STREAM
 - WIDE RIVER OR CREEK
 - RESERVOIR, POND OR LAKE W/ ISLAND
 - DAM OR DAM WITH LOCK
 - WATERFALL
 - SWAMP
 - COMMUNITY
 - COUNTY SEAT
 - SCHOOL
 - COLLEGE OR UNIVERSITY
 - HOSPITAL
 - COAST GUARD STATION
 - CHURCH
 - CHURCH WITH CEMETERY
 - CEMETERY
 - PATROL STATION
 - CORRECTION OR PENAL INSTITUTION
 - QUARRY
 - MINE OR PIT
 - HIGHWAY GARAGE OR MAINT. YARD
 - HIGHWAY DIV. OR DIST. OFFICE
 - MILITARY POST
 - WEIGH STATION
 - FAIRGROUNDS
 - HISTORICAL SITE
 - POINTS OF INTEREST
 - POST OFFICE
 - STATE FOREST
 - LIGHTHOUSE
 - MOUNTAIN SUMMIT
 - MOUNTAIN GAP
 - OVERLOOK
 - REST AREA
 - VISITOR CTR/REST AREA
 - WELCOME CTR/REST AREA
 - AIRPORT
 - MILITARY AIRPORT
 - NATIONAL / STATE FOREST BOUNDARY
 - WILDLIFE REFUGE
 - NATIONAL / STATE PARK BOUNDARY
 - GAME LANDS BOUNDARY
 - MILITARY RESERVATION BOUNDARY

ASHE COUNTY
NORTH CAROLINA

PREPARED BY THE
NORTH CAROLINA DEPARTMENT OF TRANSPORTATION
OPERATIONS PROGRAM MANAGEMENT UNIT - MAPPING SECTION
IN COOPERATION WITH THE
U.S. DEPARTMENT OF TRANSPORTATION
FEDERAL HIGHWAY ADMINISTRATION

SCALE
1 0 1
MILES

NORTH CAROLINA PLANE COORDINATE SYSTEM
LAMBERT CONFORMAL CONIC PROJECTION

SHEET 5 of 5