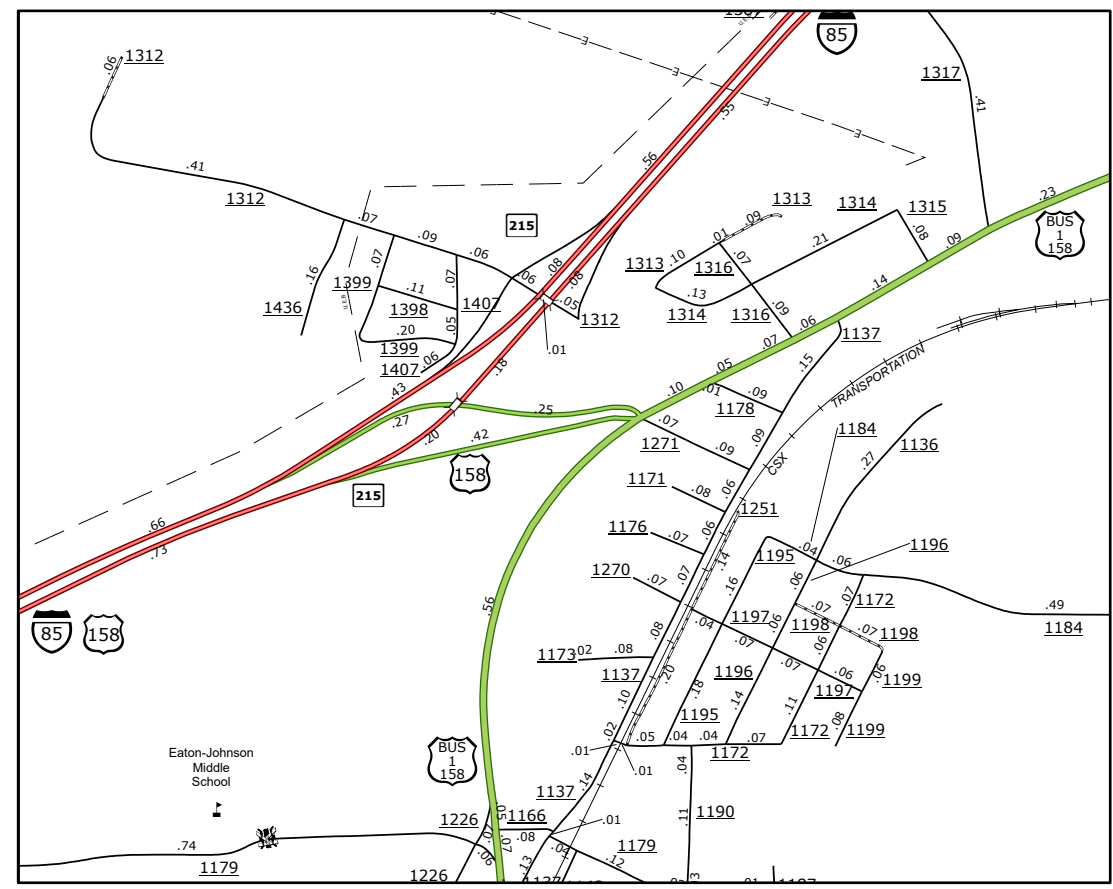
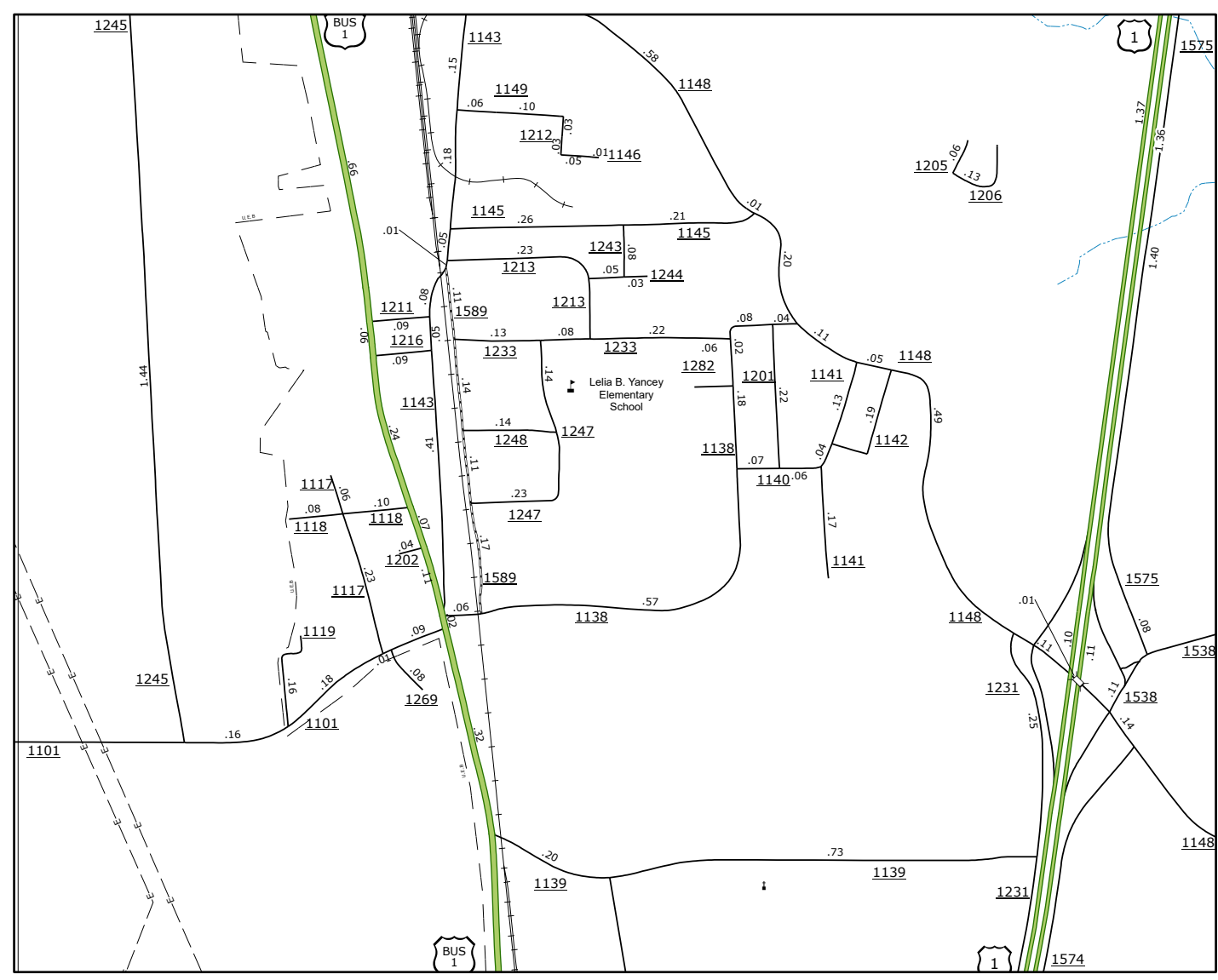


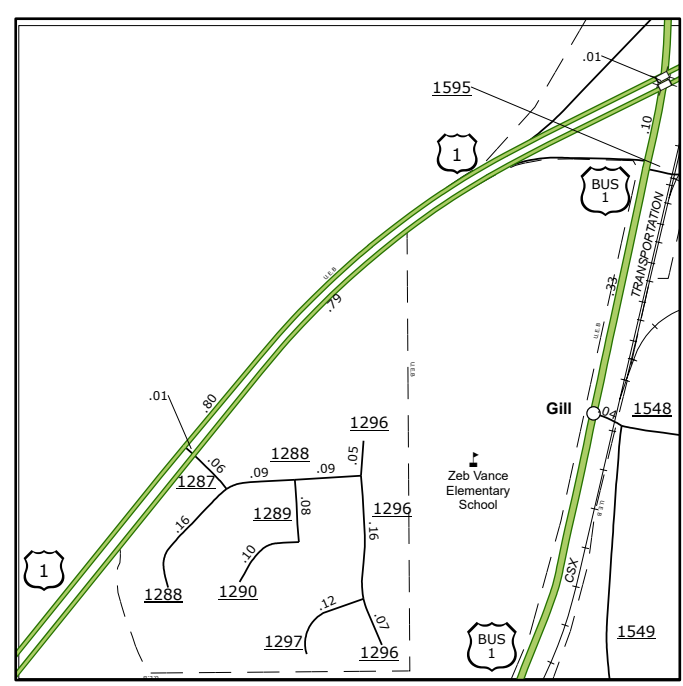
Inset A



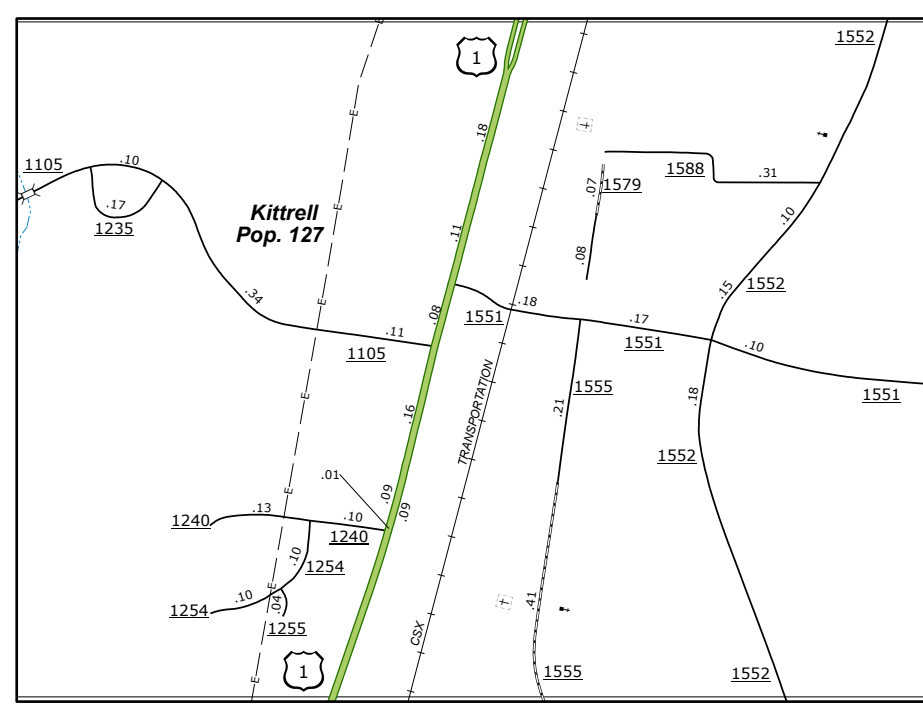
Inset B



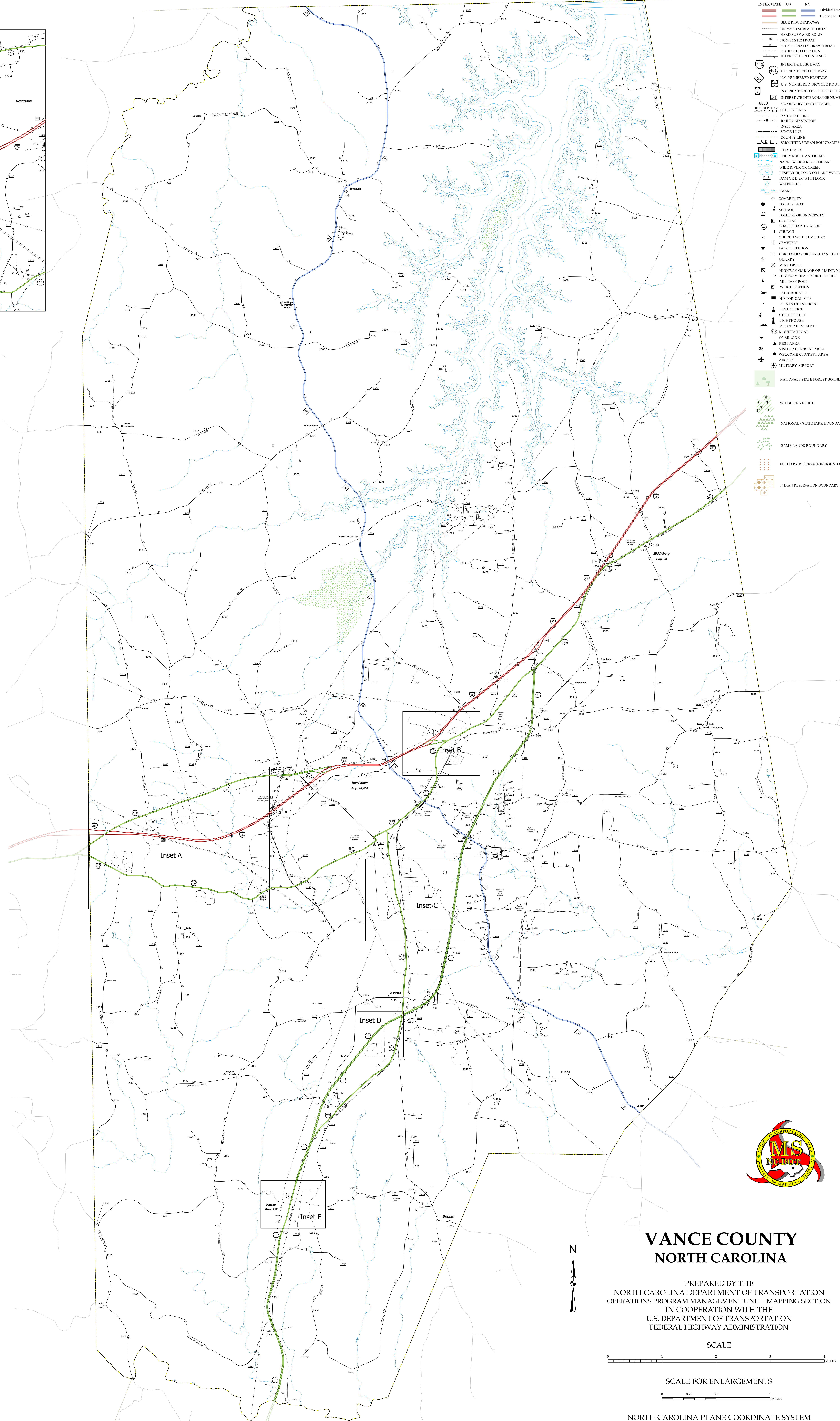
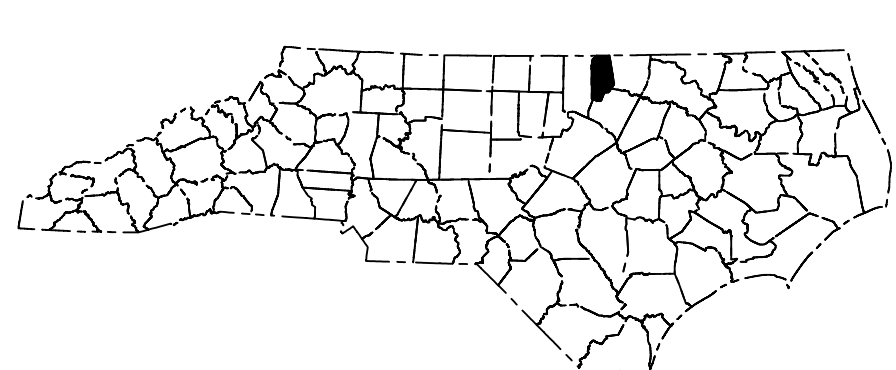
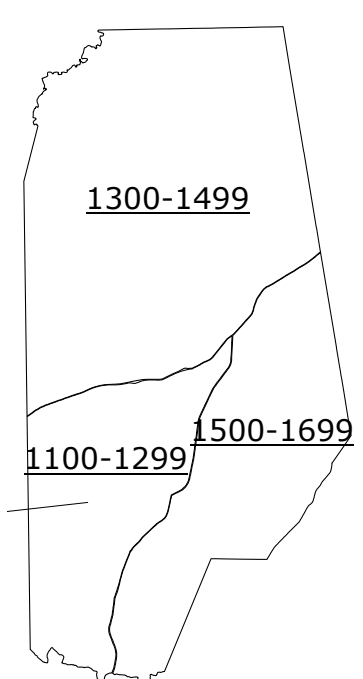
Inset C



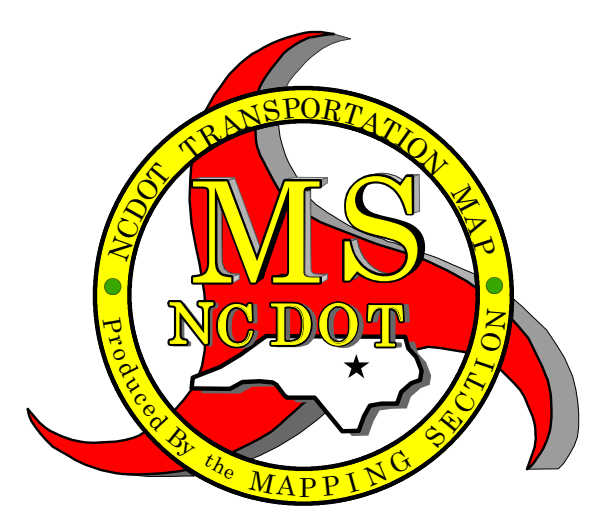
Inset D



Inset E

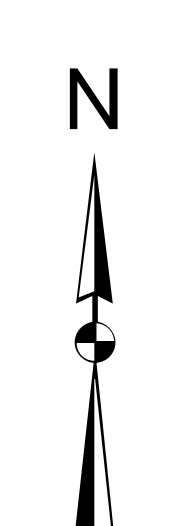


- LEGEND**
- INTERSTATE US
  - INTERSTATE NC
  - Divided Hwy
  - Undivided Hwy
  - BLUE BRIDGE PARKWAY
  - HARD SURFACED ROAD
  - UNPAVED SURFACED ROAD
  - NON-SYSTEM ROAD
  - PROVISIONALLY DRAWN ROAD
  - PROJECTED LOCATION
  - INTERESTED TRIP DISTANCE
  - INTERSTATE HIGHWAY
  - U.S. NUMBERED HIGHWAY
  - N.C. NUMBERED HIGHWAY
  - U.S. NUMBERED BICYCLE ROUTE
  - N.C. NUMBERED BICYCLE ROUTE
  - INTERSTATE INTERCHANGE NUMBER
  - SECONDARY ROAD NUMBER
  - UTILITY LINES
  - RAILROAD LINE
  - RAILROAD STATION
  - INSET AREA
  - STATE LINE
  - COUNTY LINE
  - SMOOTHED URBAN BOUNDARIES
  - CITY LIMITS
  - FERRY ROUTE AND RAMP
  - NARROW CREEK OR STREAM
  - WIDE RIVER OR CREEK
  - RESERVOIR, POND OR LAKE W/ ISLAND
  - DAM OR DAM WITH LOCK
  - WATERFALL
  - SWAMP
  - COMMUNITY
  - COUNTY SEAT
  - SCHOOL
  - COLLEGE OR UNIVERSITY
  - HOSPITAL
  - COSMETOLOGIST STATION
  - CHURCH
  - CHURCH WITH CEMETERY
  - CEMETERY
  - PATROL STATION
  - CORRECTIONS OR PENAL INSTITUTION
  - QUARRY
  - MINE OR PIT
  - HIGHWAY GARAGE OR MAINT. YARD
  - HIGHWAY DIV. OR DIST. OFFICE
  - MILITARY POST
  - WEIGH STATION
  - FARMGROUNDS
  - HISTORICAL SITE
  - POINTS OF INTEREST
  - POST OFFICE
  - STATE FOREST
  - LIGHTHOUSE
  - MOUNTAIN SUMMIT
  - MOONSTAIN GAP
  - OVERLOOK
  - REST AREA
  - VISITOR CENTER REST AREA
  - WELCOME CENTER REST AREA
  - AIRPORT
  - MILITARY AIRPORT
  - NATIONAL STATE FOREST BOUNDARY
  - WILDLIFE REFUGE
  - NATIONAL STATE PARK BOUNDARY
  - GAME LANDS BOUNDARY
  - MILITARY RESERVATION BOUNDARY
  - INDIAN RESERVATION BOUNDARY

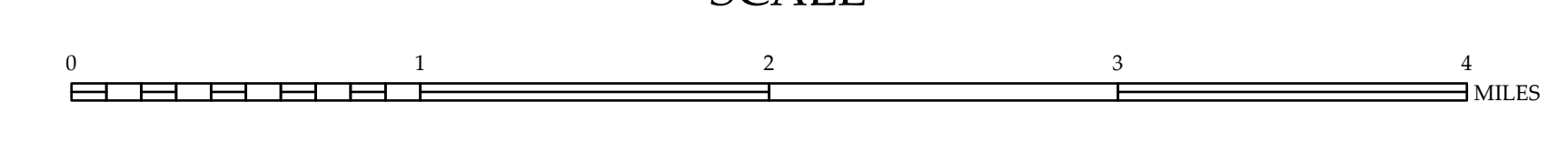


# VANCE COUNTY NORTH CAROLINA

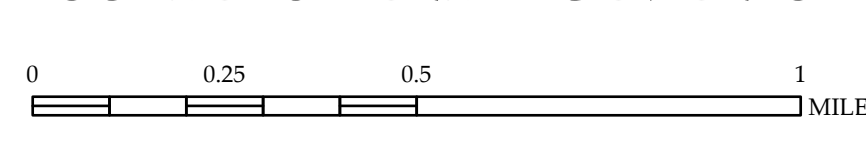
PREPARED BY THE  
NORTH CAROLINA DEPARTMENT OF TRANSPORTATION  
OPERATIONS PROGRAM MANAGEMENT UNIT - MAPPING SECTION  
IN COOPERATION WITH THE  
U.S. DEPARTMENT OF TRANSPORTATION  
FEDERAL HIGHWAY ADMINISTRATION



SCALE



SCALE FOR ENLARGEMENTS



NORTH CAROLINA PLANE COORDINATE SYSTEM  
LAMBERT CONFORMAL CONIC PROJECTION

DIVISION 5 DISTRICT 3 VANCE COUNTY NORTH CAROLINA FIPS 181

COPIES OF THIS MAP ARE AVAILABLE TO THE PUBLIC AT THE OFFICE OF THE STATE ARCHIVIST, 100 EAST COLLETT STREET, RALEIGH, NC 27603. THE ARCHIVIST'S OFFICE IS OPEN MONDAY THROUGH FRIDAY, 9:00 AM TO 4:00 PM. THE ARCHIVIST'S OFFICE IS CLOSED ON SUNDAYS AND HOLIDAYS. THE ARCHIVIST'S OFFICE IS CLOSED ON SUNDAYS AND HOLIDAYS. THE ARCHIVIST'S OFFICE IS CLOSED ON SUNDAYS AND HOLIDAYS.