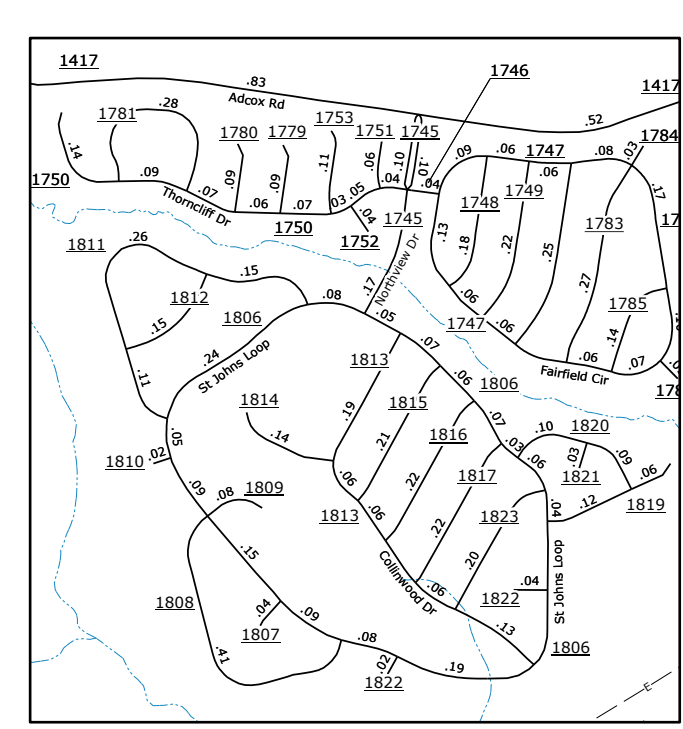
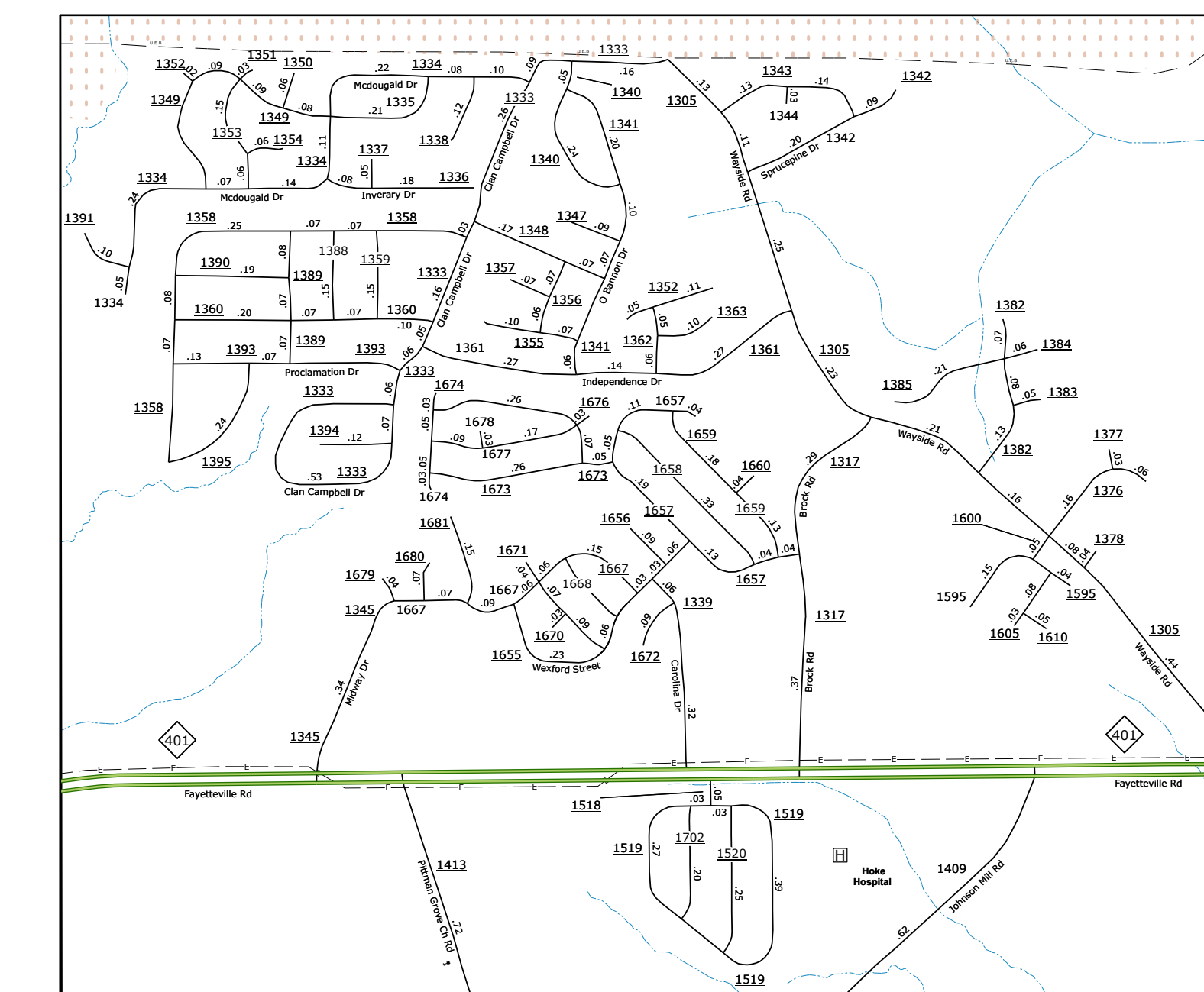


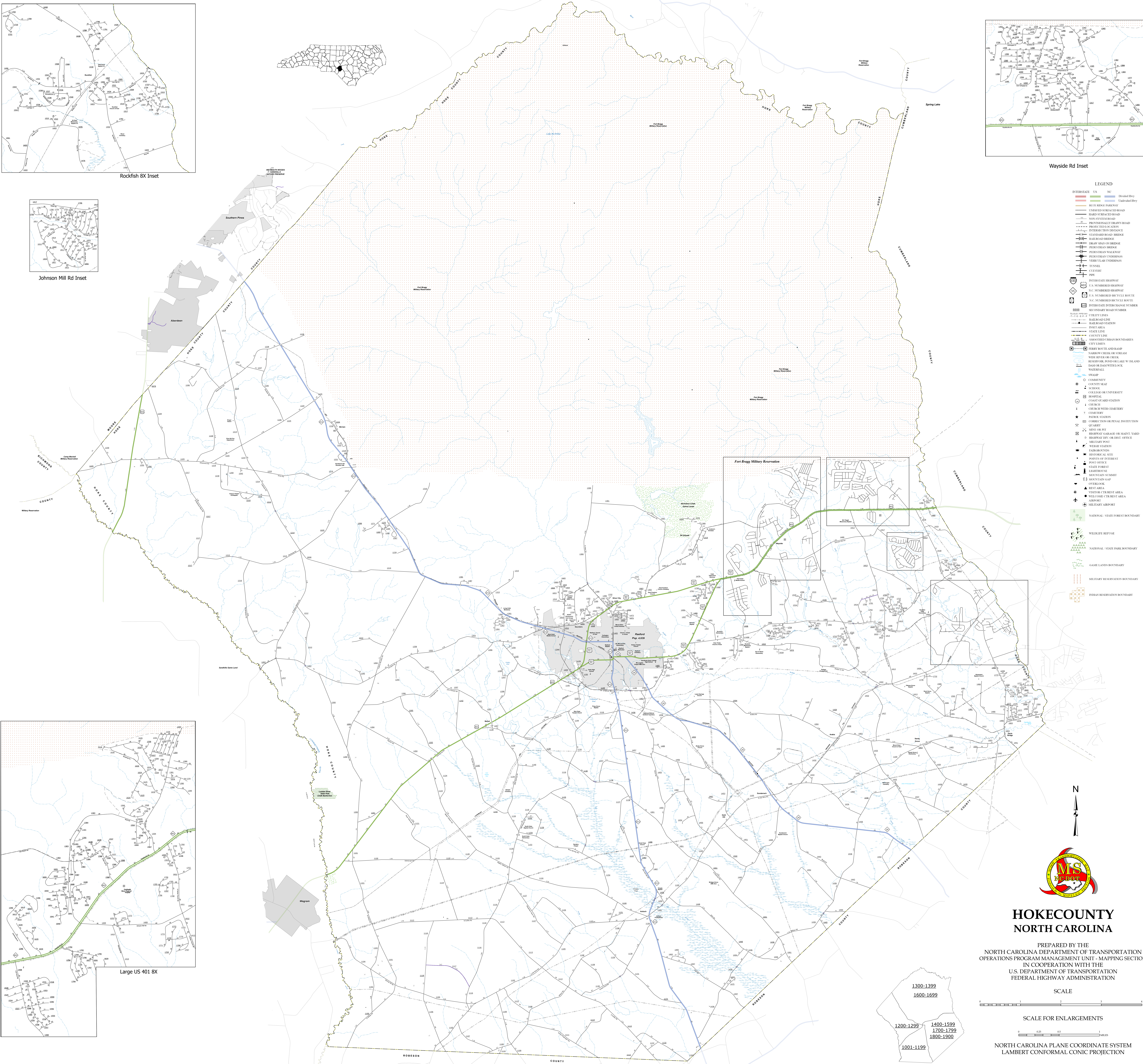
Rockfish 8X Inset



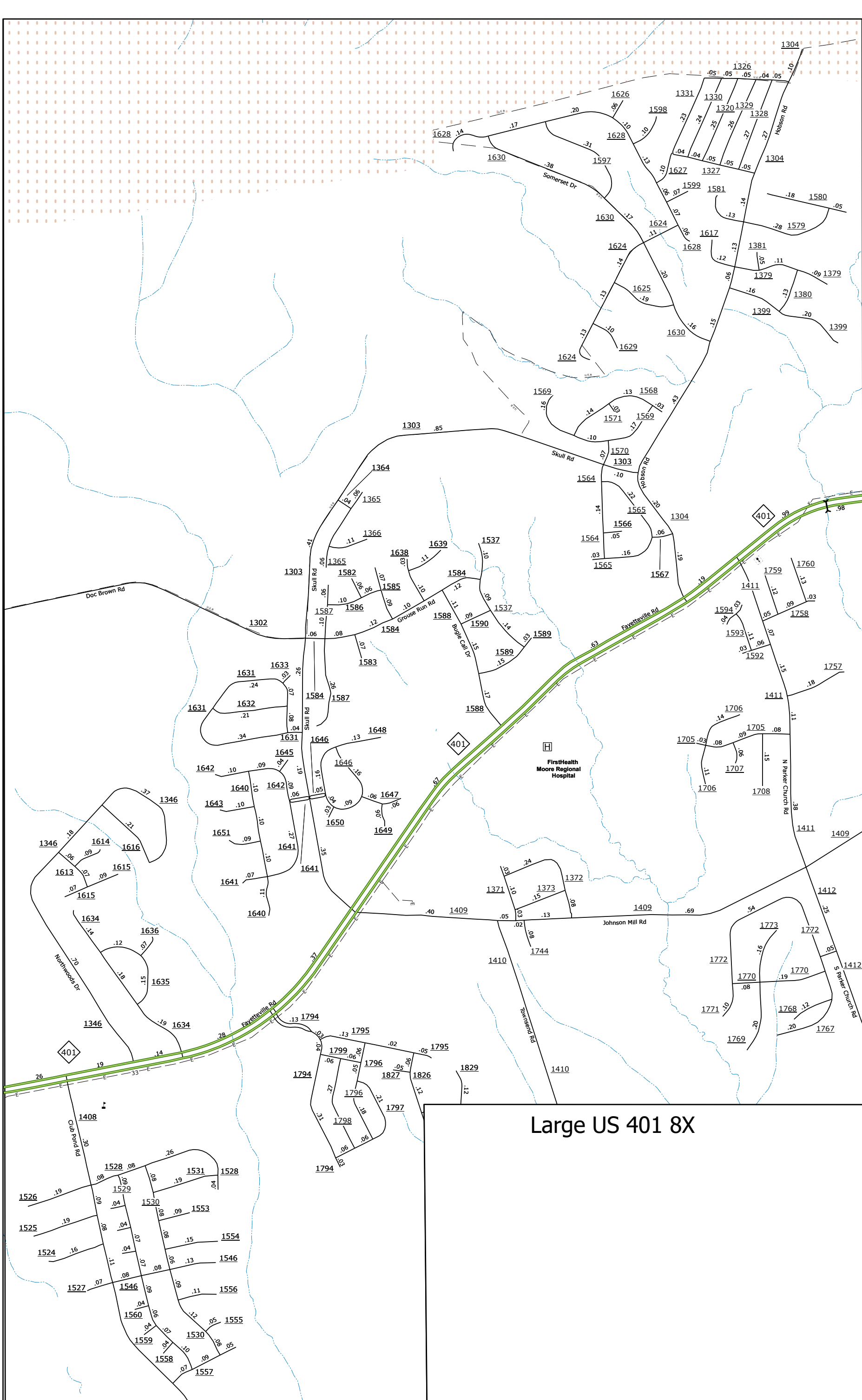
Johnson Mill Rd Inset



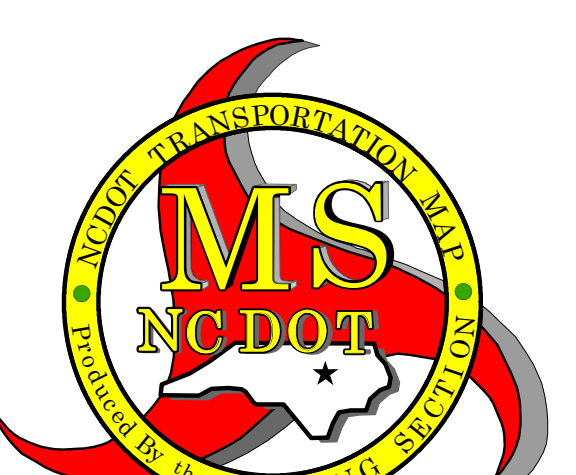
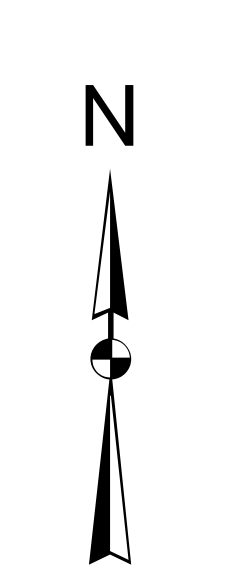
Wayside Rd Inset



- LEGEND**
- INTERSTATE IN NC Dotted Gray
 - INTERSTATE IN CA Dotted Gray
 - BLUES RIDGE PARKWAY Unimproved Surface Road
 - UNIMPROVED SURFACE ROAD Unimproved Surface Road
 - PAVED UNIMPROVED ROAD Paved Unimproved Road
 - SOON-SYSTEM ROAD Soon-System Road
 - PROPOSEDLY DRAMATIC ROAD Proposedly Dramatic Road
 - PROPOSED TOLL ROAD Proposed Toll Road
 - INTERSTATE OVERPASS Interstate Overpass
 - STANDARD ROAD BRIDGE Standard Road Bridge
 - RAILROAD BRIDGE Railroad Bridge
 - RAILROAD OVERPASS Railroad Overpass
 - PEDESTRIAN BRIDGE Pedestrian Bridge
 - PEDESTRIAN WALKWAY Pedestrian Walkway
 - PEDESTRIAN UNDERPASS Pedestrian Underpass
 - VEHICULAR UNDERPASS Vehicular Underpass
 - TUNNEL Tunnel
 - CLUEVELT Cluevelt
 - POPT POPT
 - INTERSTATE HIGHWAY U.S. Numbered Highway
 - U.S. NUMBERED HIGHWAY U.S. Numbered Highway
 - N.C. NUMBERED HIGHWAY N.C. Numbered Highway
 - U.S. NUMBERED BI-CYCLE ROUTE U.S. Numbered Bicycle Route
 - N.C. NUMBERED BI-CYCLE ROUTE N.C. Numbered Bicycle Route
 - INTERSTATE EXTERIOR FRAME NUMBER Interstate Exterior Frame Number
 - SECONDARY ROAD NUMBER Secondary Road Number
 - BRIDGE BRIDGE
 - UTILITY LINES Utility Lines
 - RAILROAD LINES Railroad Lines
 - RAILROAD STATION Railroad Station
 - INLET AREA Inlet Area
 - STATE LINE State Line
 - COUNTY LINE County Line
 - SMOOTHED URBAN BOUNDARIES Smoothed Urban Boundaries
 - CITY LIMITS City Limits
 - FERROUS PIPE AND SHAP Ferrous Pipe and Shap
 - NATURAL CREEK OR STREAM Natural Creek or Stream
 - WIDE RIVER OR CREEK Wide River or Creek
 - RESERVOIR, POND, LAKE, W. ISLAND Reservoir, Pond, Lake, W. Island
 - DAM OR DAM WITH LOCK Dam or Dam with Lock
 - WATERFALL Waterfall
 - SWAMP Swamp
 - COASTLINE Coastline
 - COUNTY SEAL County Seal
 - SCHOOL School
 - COLLEGE OR UNIVERSITY College or University
 - HOSPITAL Hospital
 - COAST GUARD STATION Coast Guard Station
 - CHEMICAL CHEMICAL
 - CEMETERY Cemetery
 - PARK STATION Park Station
 - CORRECTIONAL INSTITUTION Correctional Institution
 - QUARRY Quarry
 - HOME OR PRT Home or PRT
 - HIGHWAY GARAGE OR MAINT. YARD Highway Garage or Maint. Yard
 - ROUTE DEP. OR DIST. OFFICE Route Dep. or Dist. Office
 - MILEAGE POST Mileage Post
 - WEIGH STATION Weigh Station
 - FARGO POINT Fargo Point
 - NEOLOGICAL SITE Neologological Site
 - PORT OF INTEREST Port of Interest
 - POST OFFICE Post Office
 - STATE FOREST State Forest
 - LANDMARK Landmark
 - MOUNTAIN SUMMIT Mountain Summit
 - MOONSHAN CAMP Moonshank Camp
 - OVERTOUR Overtour
 - REST AREA Rest Area
 - VISITOR CENTER AREA Visitor Center Area
 - WELCOME CENTER AREA Welcome Center Area
 - AIRPORT Airport
 - MILITARY AIRPORT Military Airport
 - NATIONAL / STATE FOREST BOUNDARY National / State Forest Boundary
 - WILDLIFE REFUGE Wildlife Refuge
 - NATIONAL / STATE PARK BOUNDARY National / State Park Boundary
 - GAME LANDS BOUNDARY Game Lands Boundary
 - MILITARY RESERVATION BOUNDARY Military Reservation Boundary
 - INDIAN RESERVATION BOUNDARY Indian Reservation Boundary

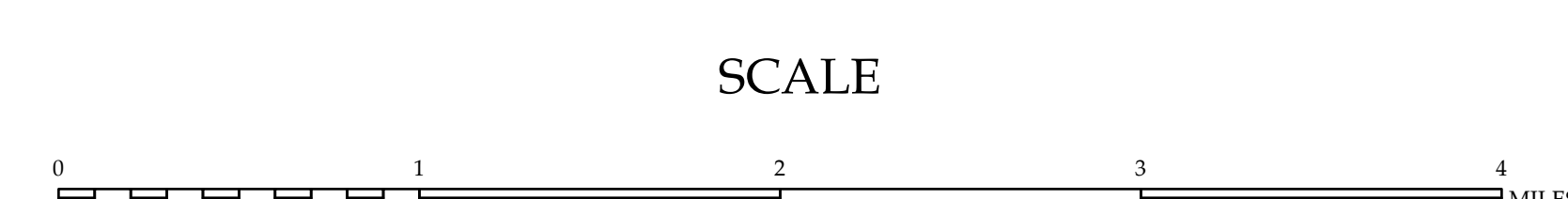


Large US 401 8X

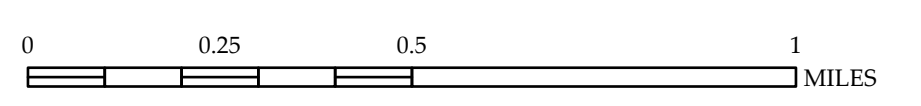


HOKE COUNTY NORTH CAROLINA

PREPARED BY THE NORTH CAROLINA DEPARTMENT OF TRANSPORTATION OPERATIONS PROGRAM MANAGEMENT UNIT - MAPPING SECTION IN COOPERATION WITH THE U.S. DEPARTMENT OF TRANSPORTATION FEDERAL HIGHWAY ADMINISTRATION



SCALE FOR ENLARGEMENTS



NORTH CAROLINA PLANE COORDINATE SYSTEM LAMBERT CONFORMAL CONIC PROJECTION

Copyright © 2000 by the State of North Carolina, Department of Transportation. All rights reserved. This map is a reproduction of the original map. The original map is the property of the State of North Carolina, Department of Transportation. All rights reserved. No part of this map may be reproduced or transmitted in any form or by any means, electronic, mechanical, photocopying, recording, or by any information storage and retrieval system, without the prior written permission of the State of North Carolina, Department of Transportation.