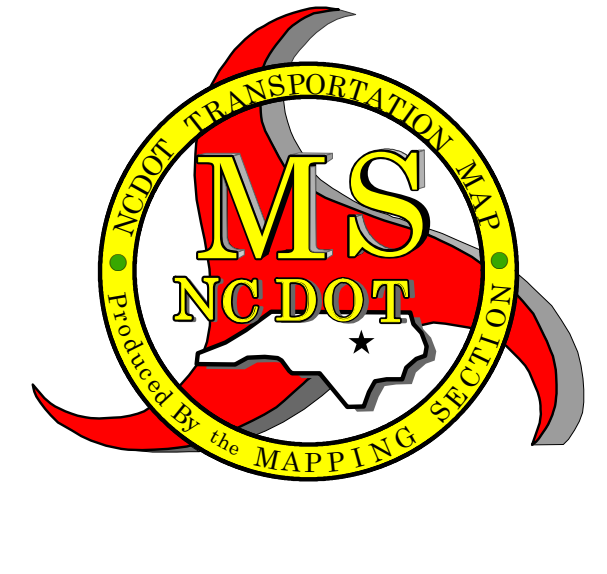
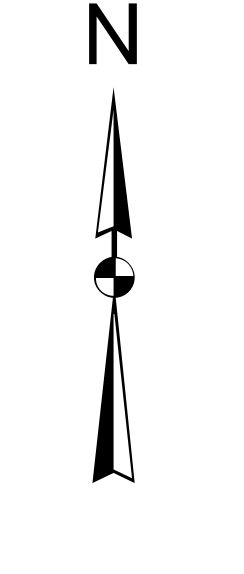
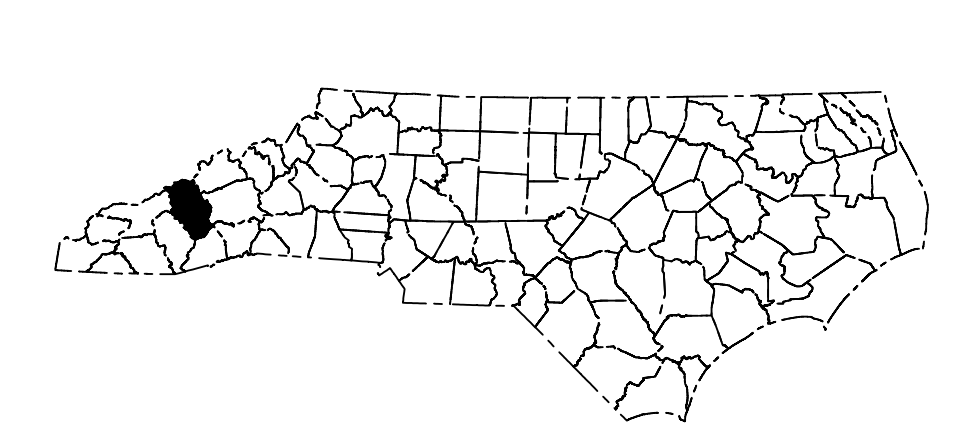
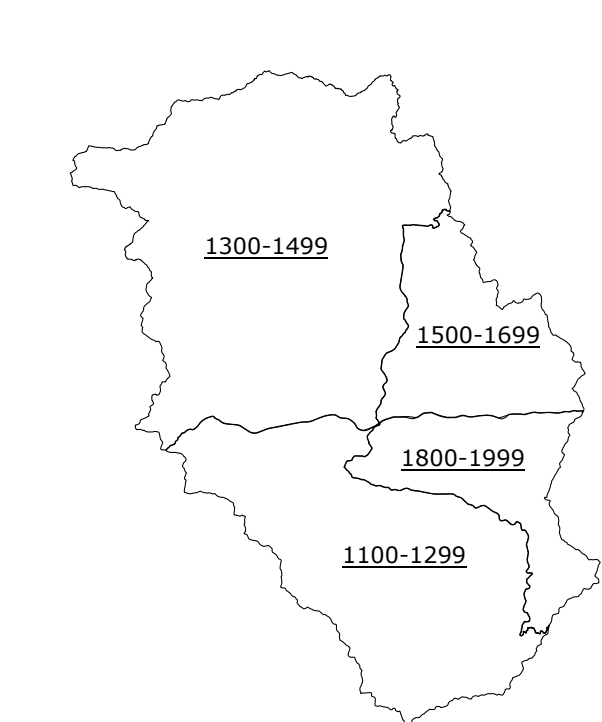
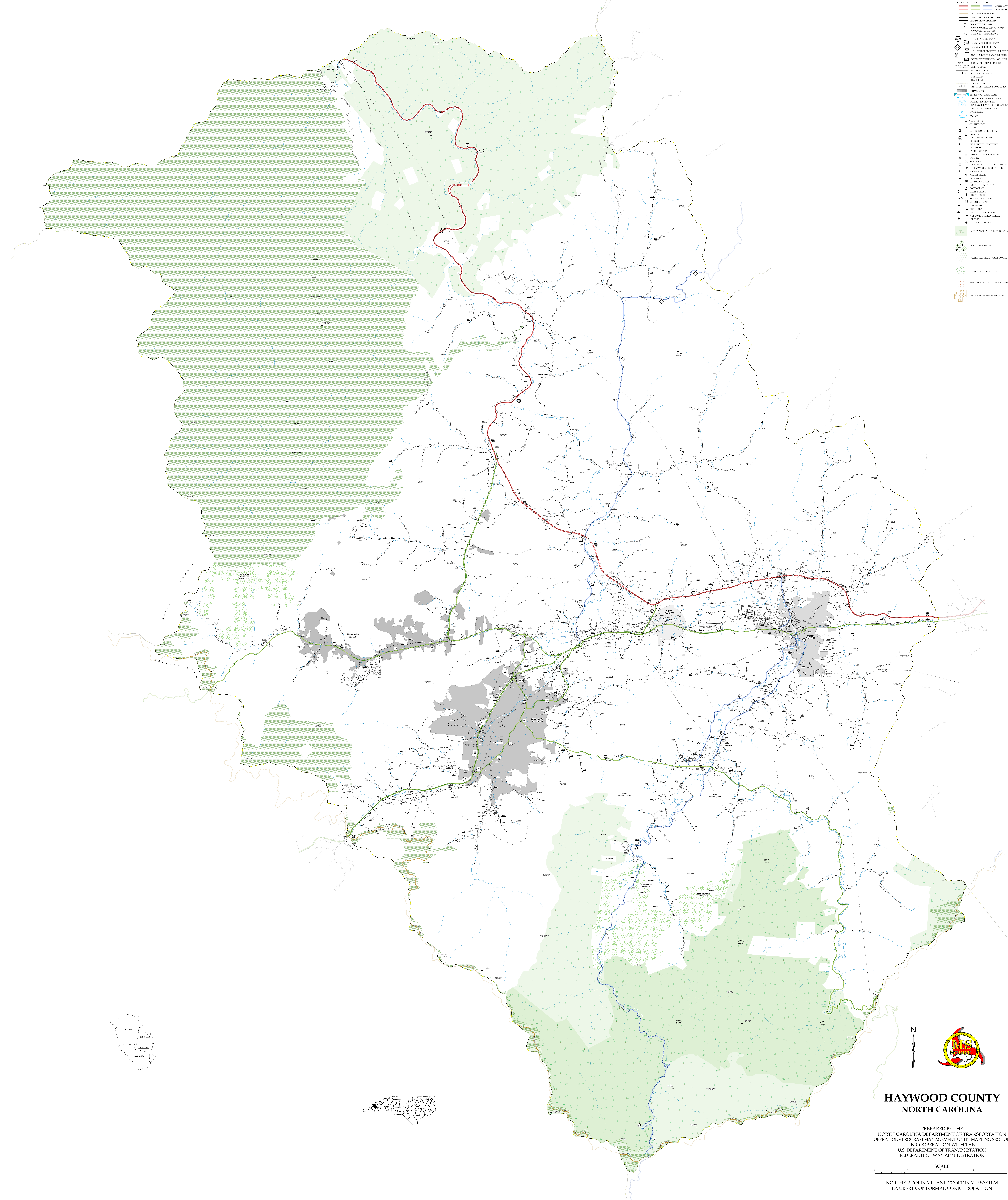


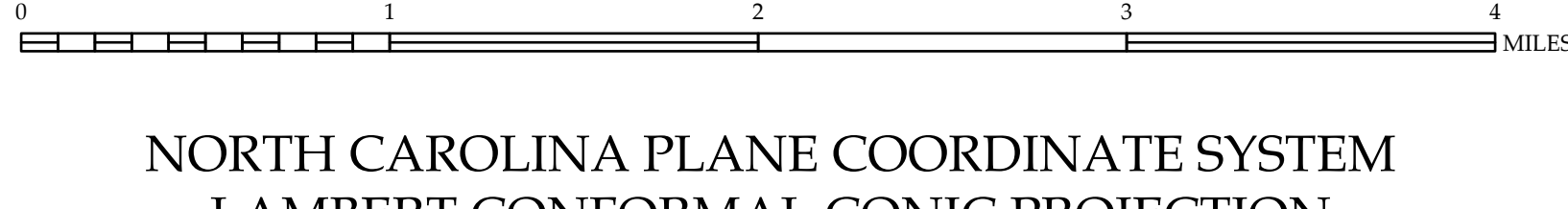
- INTERNATIONAL BOUNDARY
- STATE BOUNDARY
- COUNTY BOUNDARY
- MUNICIPAL BOUNDARY
- UNINCORPORATED BOUNDARY
- INDIAN RESERVATION BOUNDARY
- STATE HIGHWAY
- US HIGHWAY
- STATE ROUTE
- US ROUTE
- STATE ROAD
- US ROAD
- STATE DRIVE
- US DRIVE
- STATE LANE
- US LANE
- STATE WAY
- US WAY
- STATE PLACE
- US PLACE
- STATE STREET
- US STREET
- STATE COURT
- US COURT
- STATE AVENUE
- US AVENUE
- STATE BOULEVARD
- US BOULEVARD
- STATE PARKWAY
- US PARKWAY
- STATE EXPRESSWAY
- US EXPRESSWAY
- STATE FREEWAY
- US FREEWAY
- STATE INTERSTATE
- US INTERSTATE
- STATE TURNPIKE
- US TURNPIKE
- STATE EXPRESSWAY
- US EXPRESSWAY
- STATE FREEWAY
- US FREEWAY
- STATE INTERSTATE
- US INTERSTATE
- STATE TURNPIKE
- US TURNPIKE
- STATE EXPRESSWAY
- US EXPRESSWAY
- STATE FREEWAY
- US FREEWAY
- STATE INTERSTATE
- US INTERSTATE
- STATE TURNPIKE
- US TURNPIKE



# HAYWOOD COUNTY NORTH CAROLINA

PREPARED BY THE  
NORTH CAROLINA DEPARTMENT OF TRANSPORTATION  
OPERATIONS PROGRAM MANAGEMENT UNIT - MAPPING SECTION  
IN COOPERATION WITH THE  
U.S. DEPARTMENT OF TRANSPORTATION  
FEDERAL HIGHWAY ADMINISTRATION

SCALE



NORTH CAROLINA PLANE COORDINATE SYSTEM  
LAMBERT CONFORMAL CONIC PROJECTION