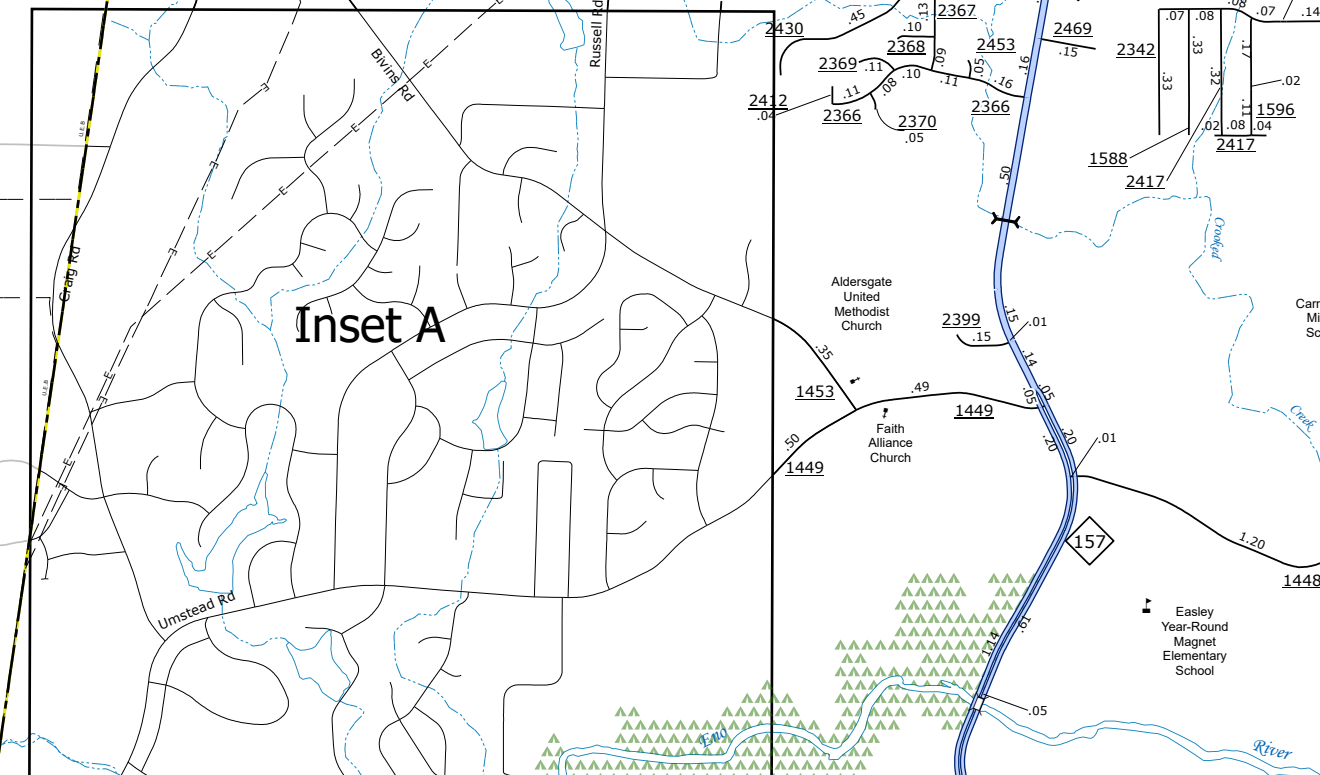
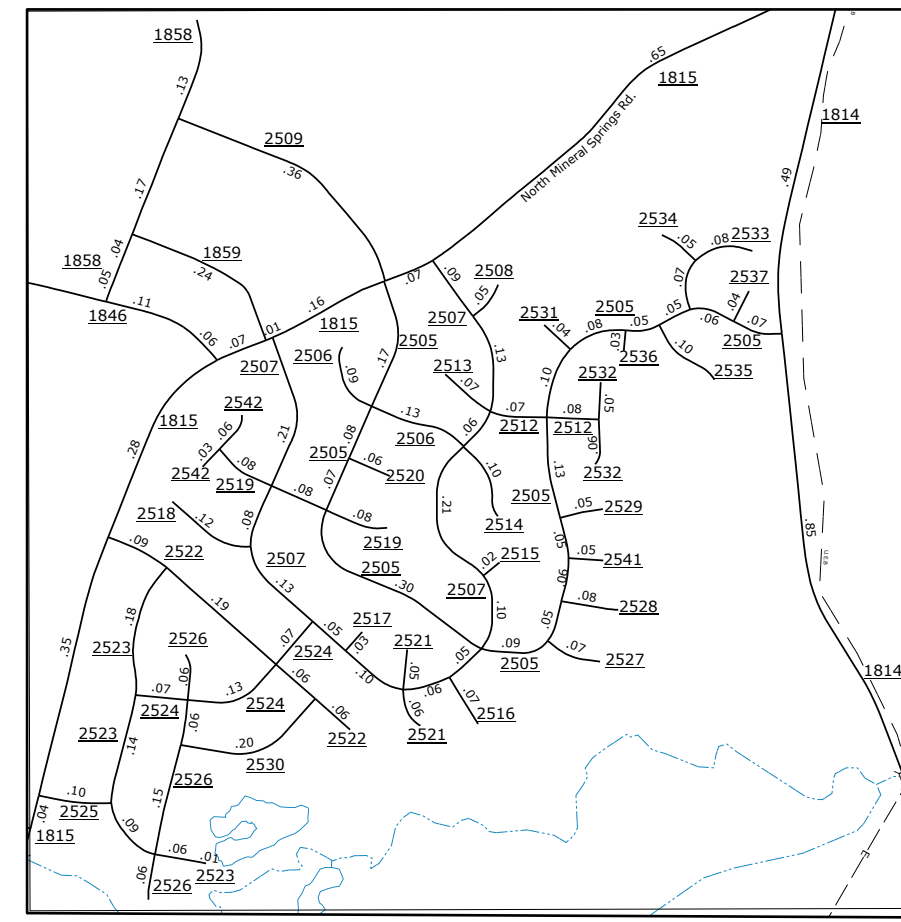


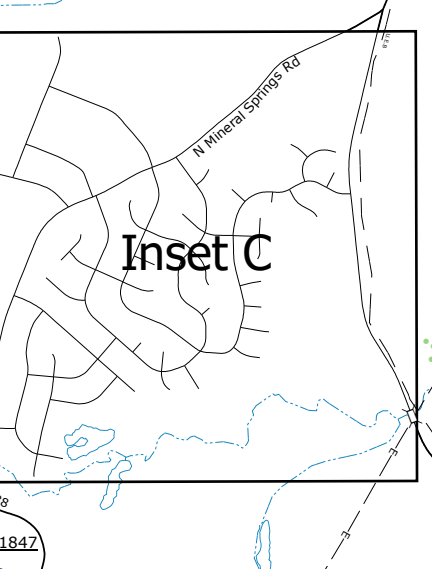
Inset A



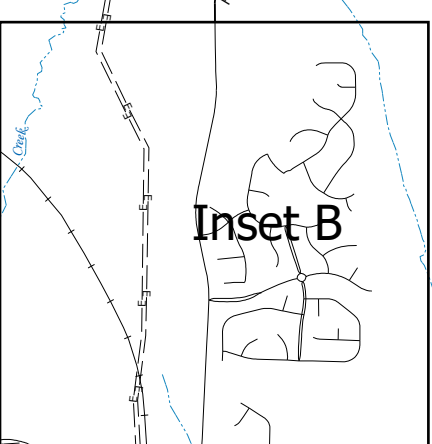
Inset A



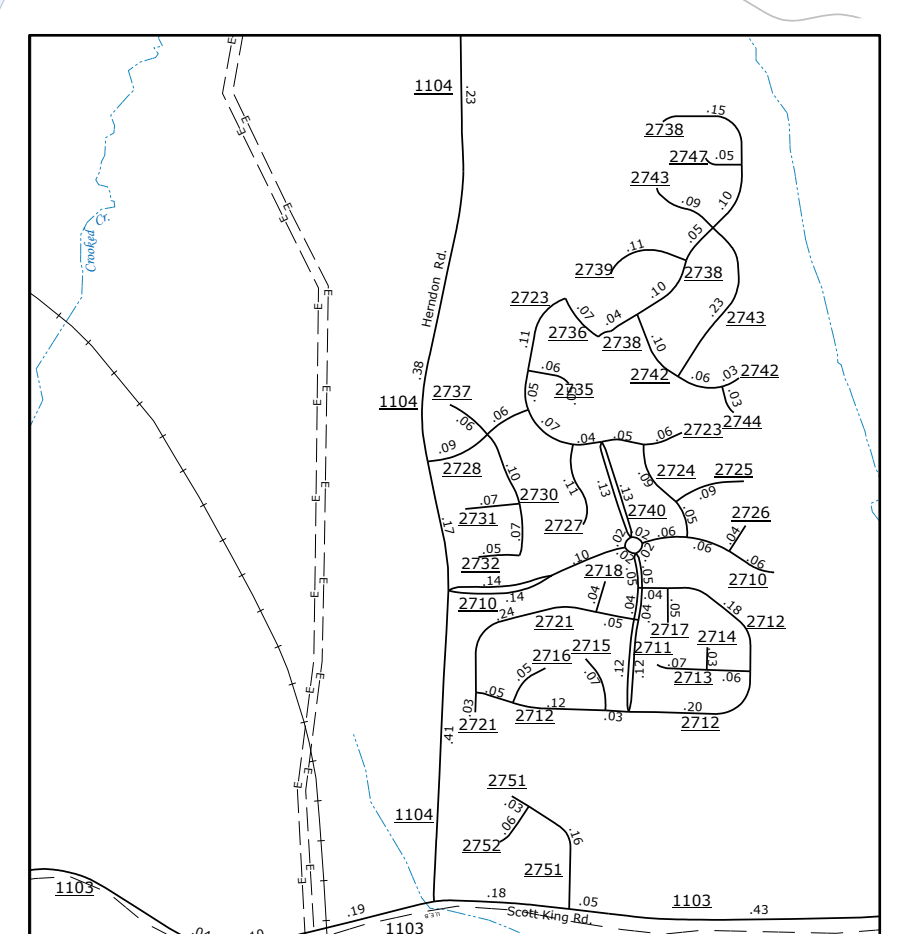
Inset C



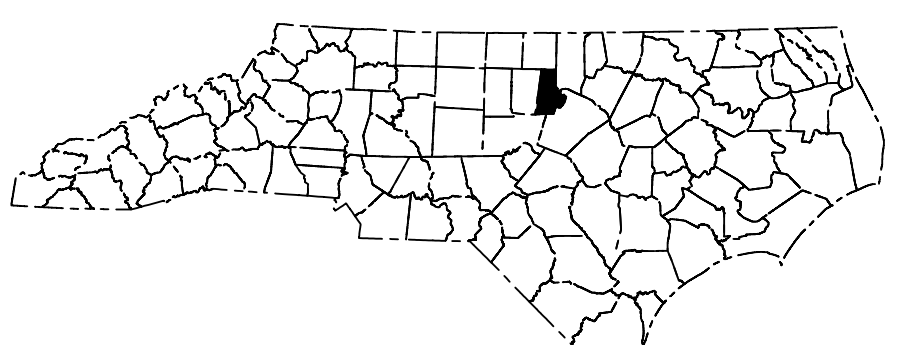
Inset C



Inset B

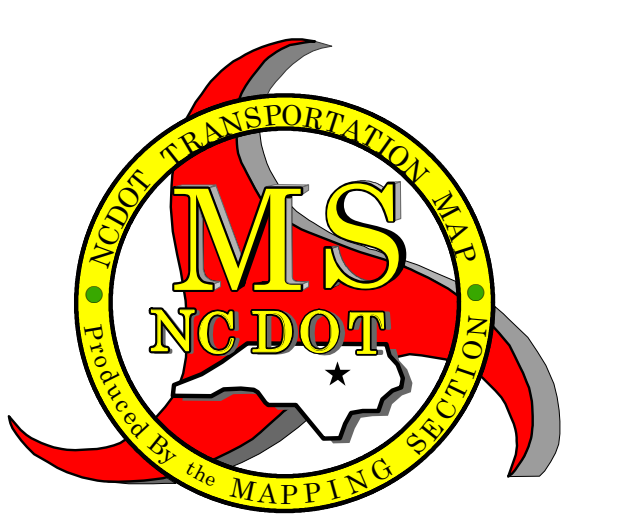
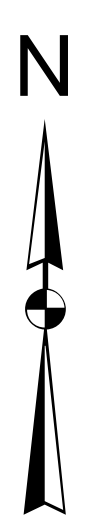


Inset B



- LEGEND**
- INTERSTATE US NC
  - Divided Hwy
  - Undivided Hwy
  - BLUE RIDGE PARKWAY
  - UNPAVED UNRESURFACED ROAD
  - ROAD RESURFACED ROAD
  - ROAD SYSTEM ROAD
  - NON-SYSTEM ROAD
  - PROVISIONALLY DRAWN ROAD
  - PROPOSED ROADWAY
  - INTERSECTION DISTANCE
  - INTERSTATE HIGHWAY
  - U.S. NUMBERED HIGHWAY
  - N.C. NUMBERED HIGHWAY
  - U.S. NUMBERED BI-CYCLE ROUTE
  - N.C. NUMBERED BI-CYCLE ROUTE
  - INTERSTATE INTERCHANGE NUMBER
  - SECONDARY ROAD NUMBER
  - STREET LINES
  - RAILROAD LINE
  - RAILROAD STATION
  - STATE LINE
  - COUNTY LINE
  - SMOOTHED URBAN BOUNDARIES
  - CITY LIMITS
  - FERRY ROUTE AND RAMP
  - SARAWAY CREEK OR STREAM
  - WIDE RIVER OR CREEK
  - RESERVOIR, POND OR LAKE W/ ISLAND
  - DAM OR DAM WITH LOCK
  - WATERFALL
  - SWAMP
  - COMMUNITY
  - COUNTY SEAT
  - SCHOOL
  - COLLEGE OR UNIVERSITY
  - HOSPITAL
  - COURT HOUSE
  - CHURCH
  - CEMETERY WITH CEMETERY
  - CEMETERY
  - PUBLIC SCHOOL
  - CORRECTION OR PENAL INSTITUTION
  - QUARRY
  - MINE OR PIT
  - HIGHWAY GARAGE OR MAINT. YARD
  - HIGHWAY DEP. OR DIST. OFFICE
  - MILITARY POST
  - WEIGH STATION
  - FARMS
  - HISTORICAL SITE
  - POINTS OF INTEREST
  - POST OFFICE
  - SCALE FOREST
  - LIGHTHOUSE
  - MOUNTAIN RESORT
  - MOUNTAIN GAP
  - OVERLOOK
  - REST AREA
  - VISITOR CENTER AREA
  - WELCOME CENTER AREA
  - AIRPORT
  - MILITARY AIRPORT
  - NATIONAL STATE FOREST BOUNDARY
  - WILDLIFE REFUGE
  - NATIONAL STATE PARK BOUNDARY
  - GAME LANDS BOUNDARY
  - MILITARY RESERVATION BOUNDARY
  - INDIAN RESERVATION BOUNDARY

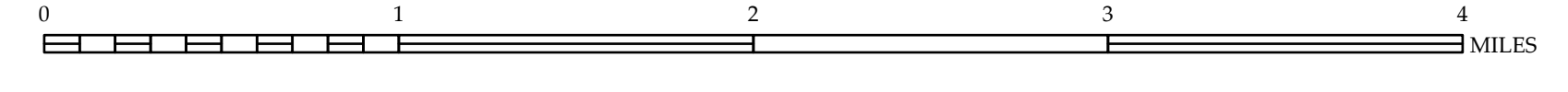
- BRIDGE
- CITY BRIDGE
- CITY CULVERT
- N.C. CULVERT
- CONCRETE
- WOODEN BRIDGE
- WOODEN CULVERT
- WOODEN PIPE
- WOODEN TRESTLE
- WOODEN UNDERPASS
- WOODEN OVERPASS STRUCTURE
- WOODEN OVERPASS
- CITY PIPE
- CONCRETE BRIDGE
- CONCRETE CULVERT
- CONCRETE UNDERPASS
- CONCRETE OVERPASS
- CONCRETE OVERPASS STRUCTURE
- CONCRETE OVERPASS
- CONCRETE PIPE
- CONCRETE UNDERPASS
- CONCRETE OVERPASS
- CONCRETE OVERPASS STRUCTURE
- CONCRETE OVERPASS
- CONCRETE PIPE



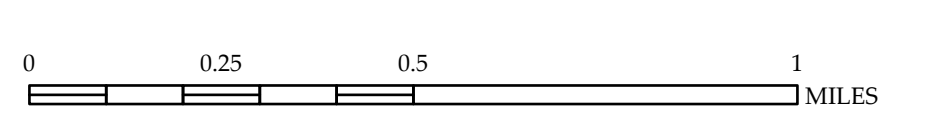
# DURHAM COUNTY NORTH CAROLINA

PREPARED BY THE  
NORTH CAROLINA DEPARTMENT OF TRANSPORTATION  
OPERATIONS PROGRAM MANAGEMENT UNIT - MAPPING SECTION  
IN COOPERATION WITH THE  
U.S. DEPARTMENT OF TRANSPORTATION  
FEDERAL HIGHWAY ADMINISTRATION

SCALE



SCALE FOR ENLARGEMENTS



NORTH CAROLINA PLANE COORDINATE SYSTEM  
LAMBERT CONFORMAL CONIC PROJECTION

