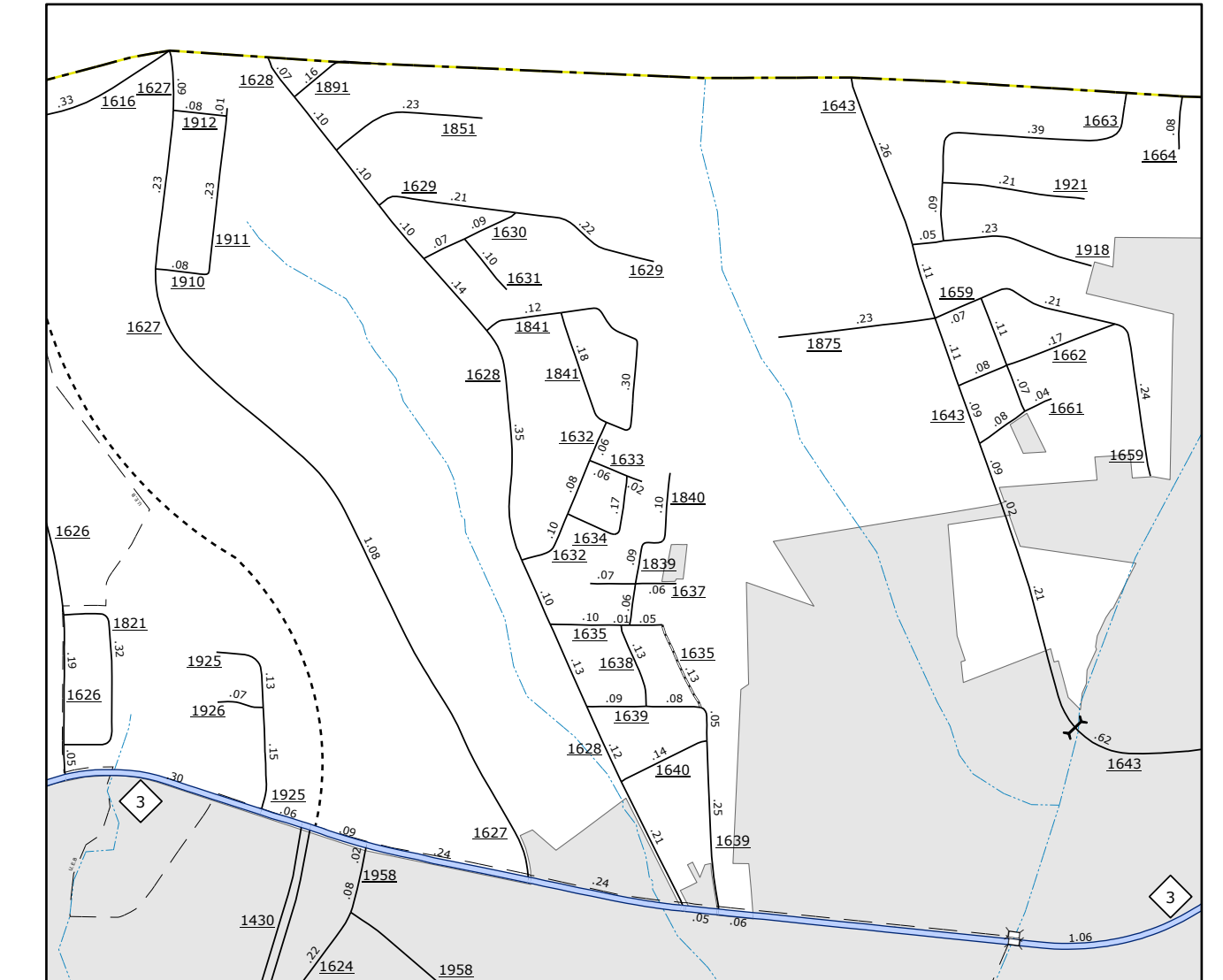
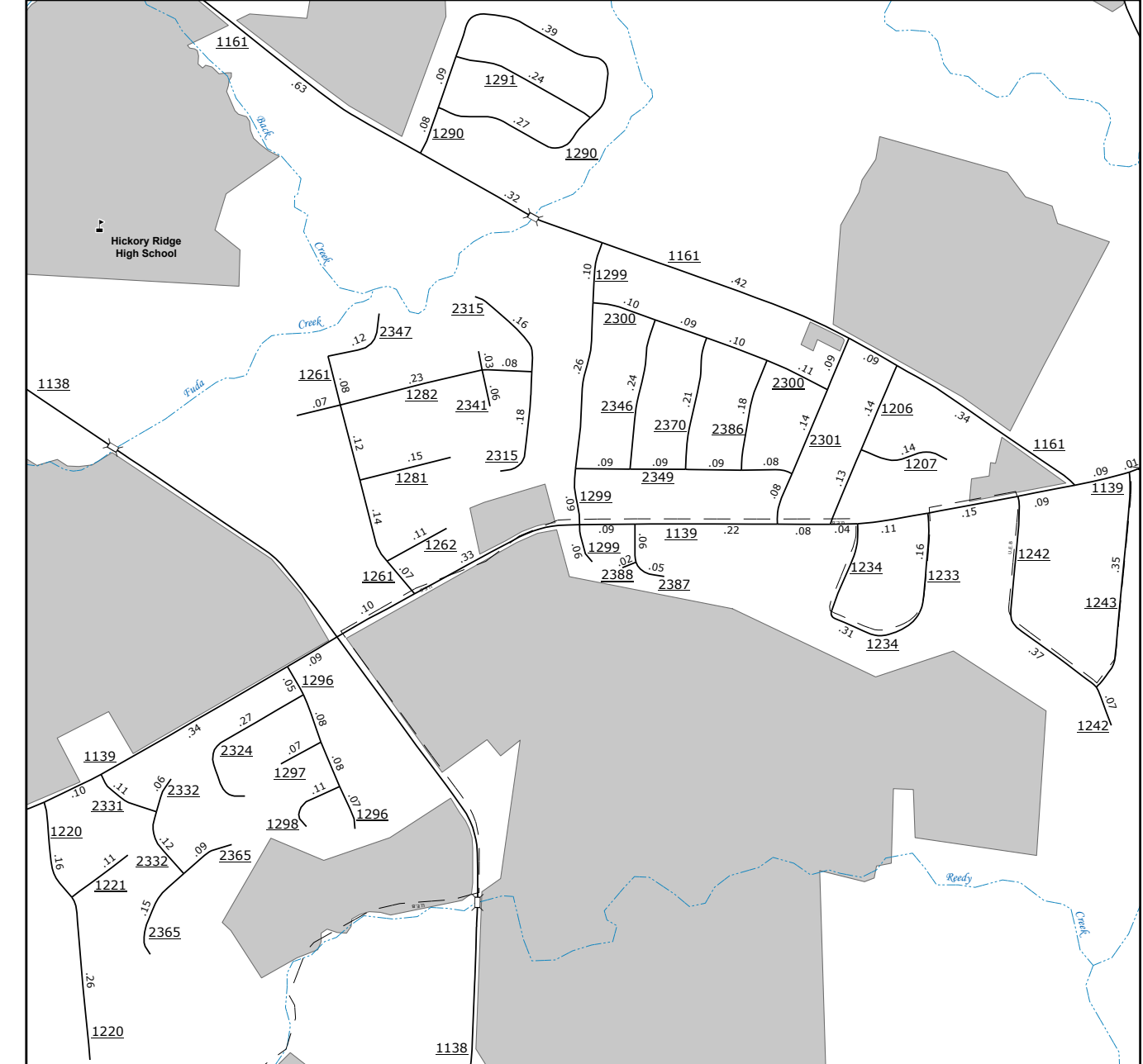


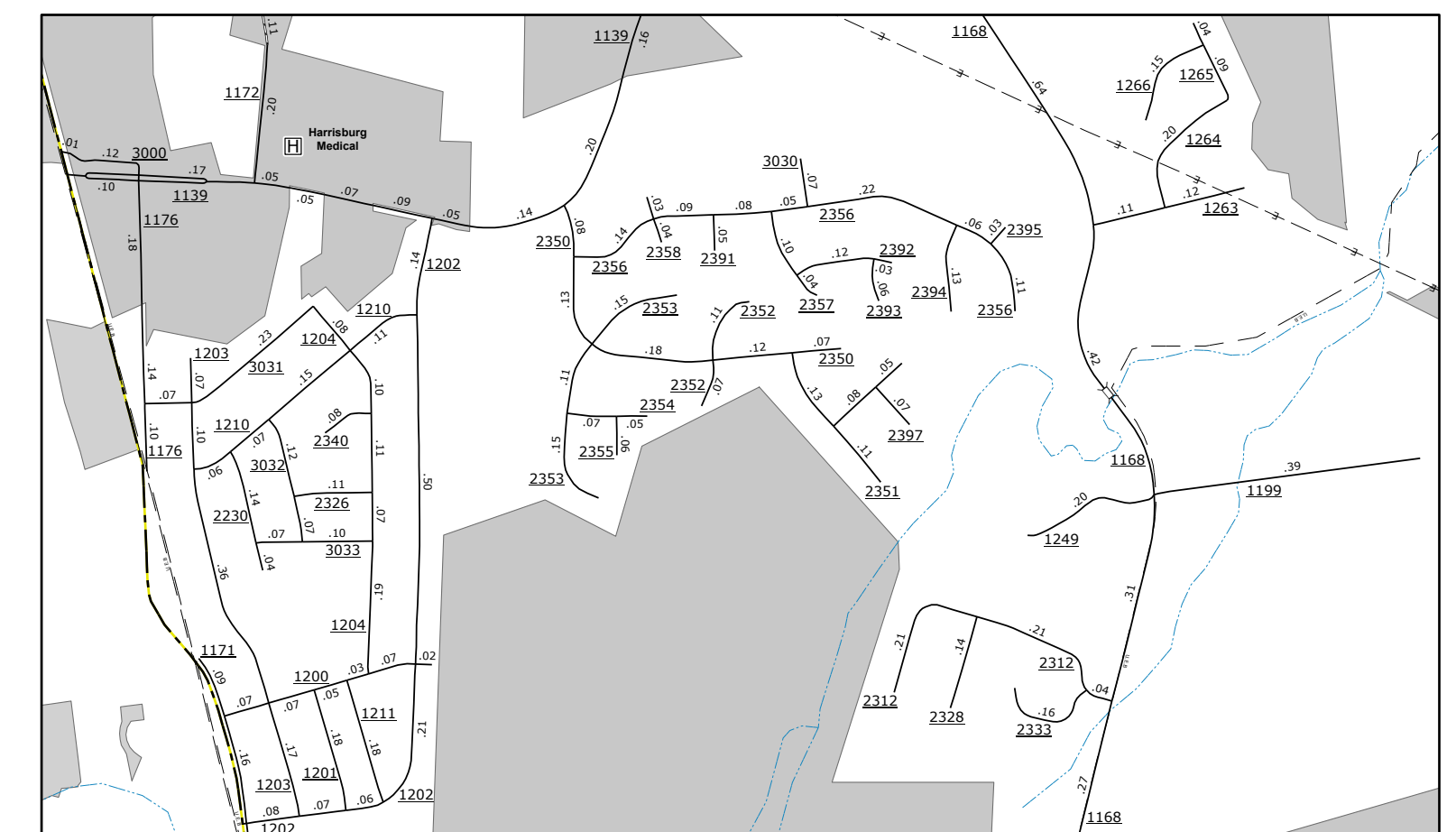
- LEGEND**
- INTERSTATE US NC Divided Hwy Undivided Hwy
 - BLUE RIDGE PARKWAY
 - UNPAVED SURFACED ROAD
 - HARD SURFACED ROAD
 - NON-STATE ROAD
 - PROFESSIONALLY DRAWN ROAD
 - PROFIC TIE LOCK ADJCN
 - INTERSECTION BRIDGE
 - STANDARD ROAD BRIDGE
 - RAILROAD BRIDGE
 - RAILROAD SPAN OR BRIDGE
 - PEDESTRIAN BRIDGE
 - PEDESTRIAN WALKWAY
 - VEHICULAR UNDERPASS
 - TUNNEL
 - CULVERT
 - PIPE
 - INTERSTATE HIGHWAY
 - U.S. NUMBERED HIGHWAY
 - N.C. NUMBERED HIGHWAY
 - U.S. NUMBERED BICYCLE ROUTE
 - N.C. NUMBERED BICYCLE ROUTE
 - INTERSTATE INTERCHANGE NUMBER
 - STATE ROAD NUMBER
 - STREET LIGHTS
 - RAILROAD LINE
 - RAILROAD STATION
 - INSTR AREA
 - STATE LINE
 - COUNTY LINE
 - CITY LIMITS
 - SMOOTHED URBAN BOUNDARIES
 - RAILROAD CROSSING
 - FERRY ROUTE AND RAMP
 - NARROW CREEK OR STREAM
 - WIDE RIVER OR CREEK
 - RESERVOIR POND OR LAKE W/ ISLAND
 - DAM OR DAM WITH LOCK
 - WATERFALL
 - SWAMP
 - COMMUNITY
 - COUNTY SEAT
 - SCHOOL
 - COLLEGE OR UNIVERSITY
 - HOSPITAL
 - COAST GUARD STATION
 - CHURCH
 - CHURCH WITH CEMETERY
 - CEMETERY
 - POLICE STATION
 - CORRECTION OR PENAL INSTITUTION
 - QUARRY
 - WINE OR PIT
 - HIGHWAY GARAGE OR MAINT. YARD
 - HIGHWAY DIV. OR DIST. OFFICE
 - MILITARY POST
 - WEIGH STATION
 - FARGROUNDS
 - HISTORICAL SITE
 - POINTS OF INTEREST
 - POST OFFICE
 - STATE FOREST
 - LIGHTHOUSE
 - MOUNTAIN SUMMIT
 - MOUNTAIN GAP
 - OVERLOOK
 - REST AREA
 - VISITOR CTR/REST AREA
 - WELCOME CTR/REST AREA
 - BERM
 - MILITARY AIRPORT
 - NATIONAL / STATE FOREST BOUNDARY
 - WILDLIFE REFUGE
 - NATIONAL / STATE PARK BOUNDARY
 - GAME LANDS BOUNDARY
 - MILITARY RESERVATION BOUNDARY
 - INDIAN RESERVATION BOUNDARY



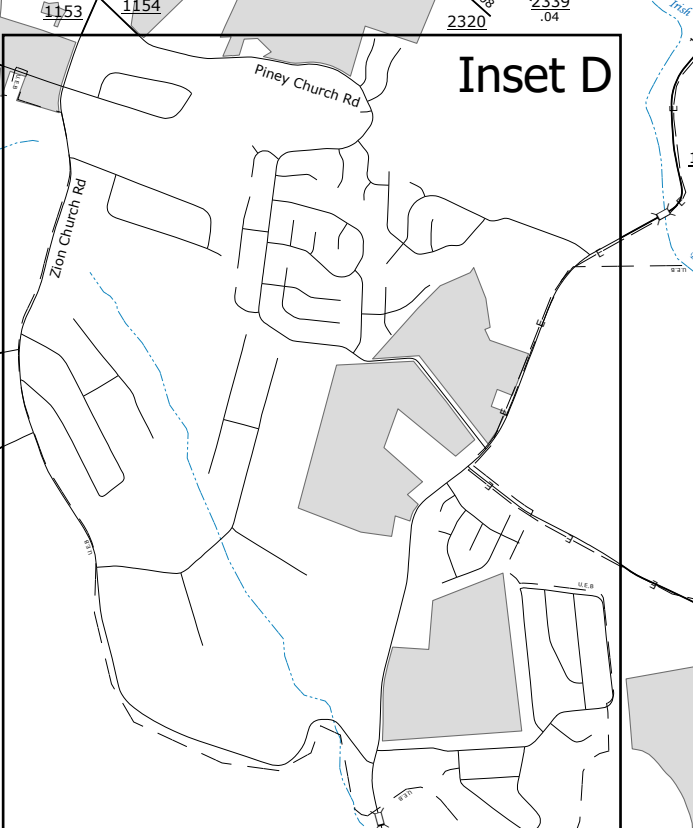
Inset C



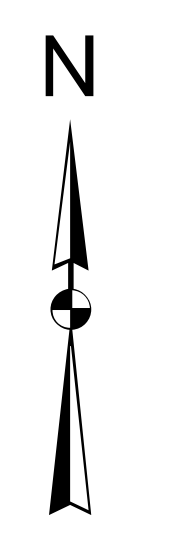
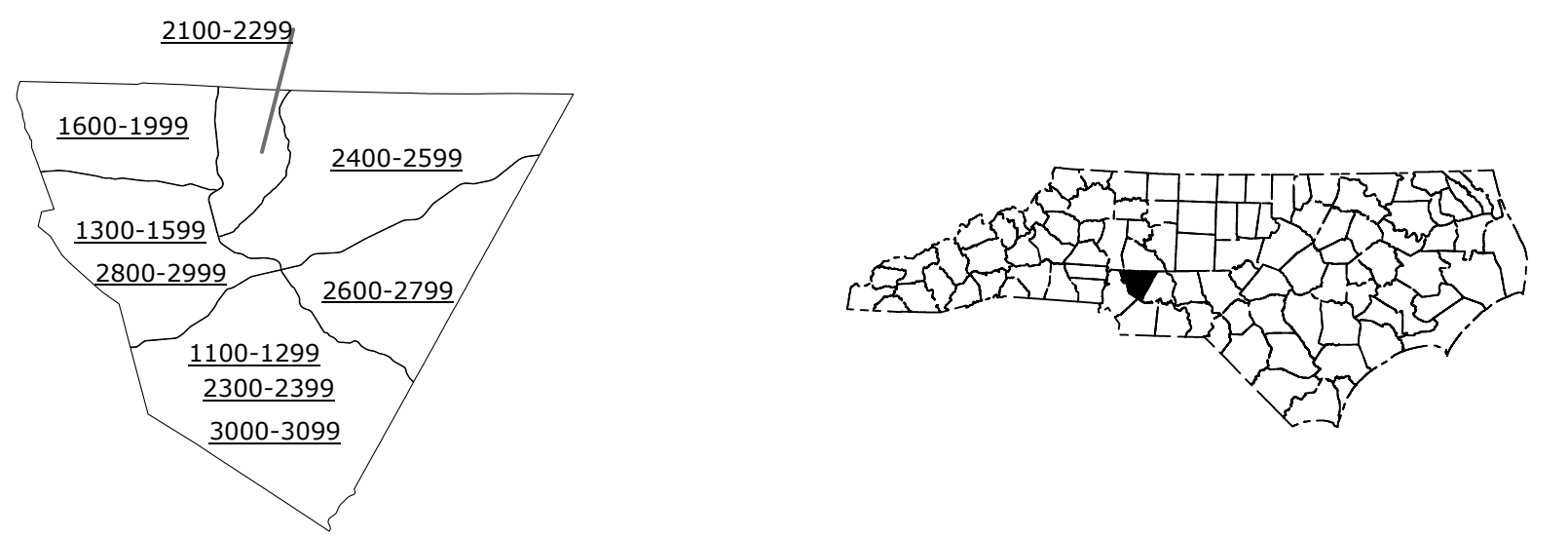
Inset B



Inset A

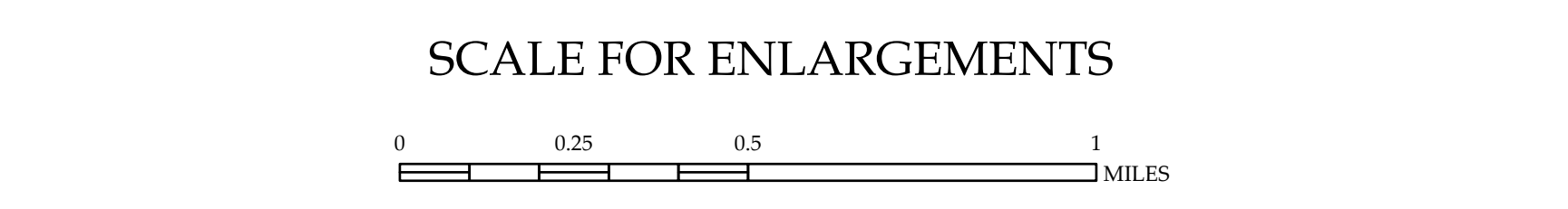
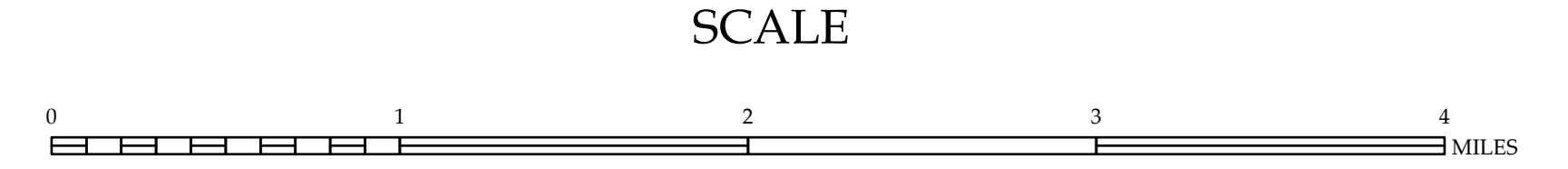


Inset D



CABARRUS COUNTY NORTH CAROLINA

PREPARED BY THE
NORTH CAROLINA DEPARTMENT OF TRANSPORTATION
OPERATIONS PROGRAM MANAGEMENT UNIT - MAPPING SECTION
IN COOPERATION WITH THE
U.S. DEPARTMENT OF TRANSPORTATION
FEDERAL HIGHWAY ADMINISTRATION



NORTH CAROLINA PLANE COORDINATE SYSTEM
LAMBERT CONFORMAL CONIC PROJECTION

COPIES OF THIS MAP AND DATA TO BE
MADE BY THE USER ARE SUBJECT TO THE
STATE OF NORTH CAROLINA'S PUBLIC RECORDS
ACT AND THE FEDERAL INFORMATION PRACTICE ACT.
THE USER SHALL BE RESPONSIBLE FOR OBTAINING
NECESSARY PERMISSIONS FROM THE STATE OF
NORTH CAROLINA AND THE FEDERAL GOVERNMENT
FOR THE REPRODUCTION OF THIS MAP AND DATA.
THE STATE OF NORTH CAROLINA AND THE
FEDERAL GOVERNMENT SHALL NOT BE LIABLE FOR
ANY ERRORS OR OMISSIONS IN THIS MAP AND
DATA.