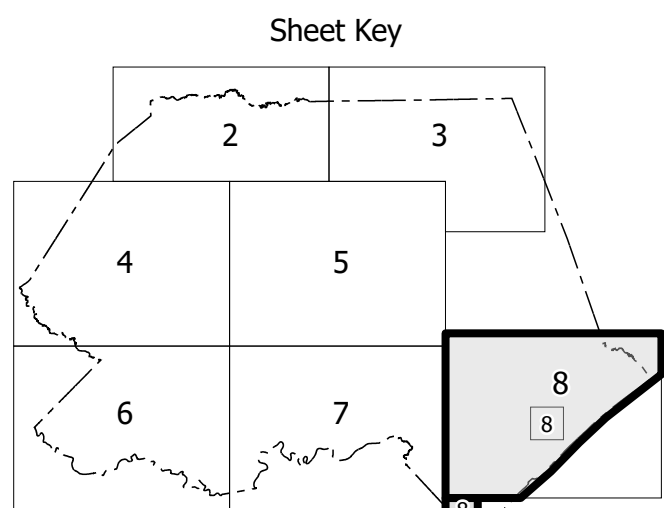
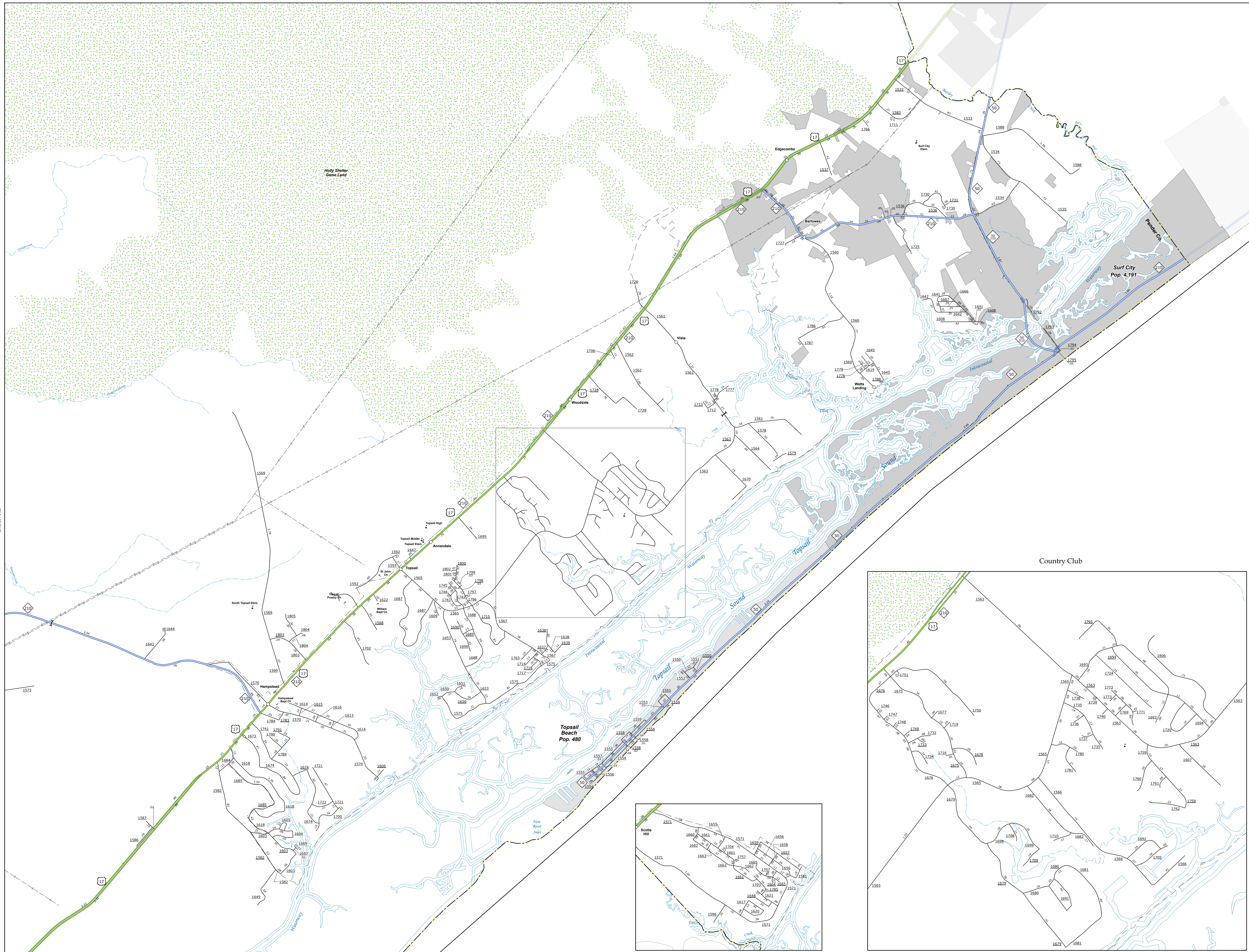


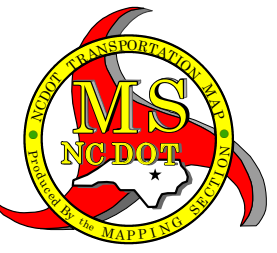
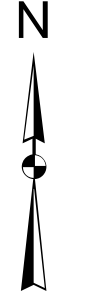
The Mapping Section's goal is to provide the most accurate and current information possible. Map data is compiled from a variety of sources, including aerial photography, ground surveys, and other data. The information shown on this map was last updated in January 2024. For additional information, visit the Pender County website at <http://www.pendercountync.gov>. State Mapping Program/Criming Maps.aspx (07/19/2024)

COPYRIGHT OF THIS MAP IS AVAILABLE TO THE PUBLIC AT NO CHARGE. Mapping Section/Criming Maps.aspx (07/19/2024)



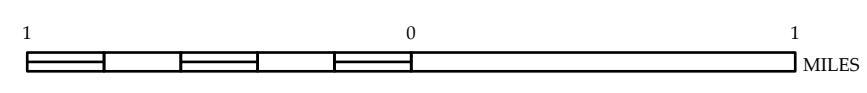
LEGEND

- INTERSTATE US NC Divided Hwy Undivided Hwy
- BLVD BRIDGE PARKWAY
- UNPAVED SURFACE ROAD
- HARD SURF PAVED ROAD
- NO SURF ROAD
- PROPOSEDLY GRADED ROAD
- PROPOSEDLY OPEN
- INTERSTATE TRUCK ROUTE
- STANDARD ROAD BRIDGE
- RAILROAD BRIDGE
- CRAN SPAN ON BRIDGE
- PEDESTRIAN BRIDGE
- PEDESTRIAN WALKWAY
- PEDESTRIAN UNDERPASS
- VEHICLE UNDERPASS
- TUNNEL
- CUTBACK
- PPP
- INTERSTATE HIGHWAY
- US NUMBERED HIGHWAY
- NC NUMBERED HIGHWAY
- US NUMBERED BICYCLE ROUTE
- NC NUMBERED BICYCLE ROUTE
- INTERSTATE INTERCHANGE NUMBER
- SECONDARY ROAD NUMBER
- RAILROAD LINE
- RAILROAD STATION
- POST OFFICE
- STATE LINE
- COUNTY LINE
- CITY LIMITS
- SMOOTHED URBAN BOUNDARIES
- CITY LIMITS
- FERRY ROUTE AND DAMP
- SHADON CREEK OR STREAM
- WIDE RIVER OR CREEK
- RESERVOIR, POND OR LAKE W/ INLAND
- DAM OR DAM WITH LOCK
- WATERFALL
- SWAMP
- COMMUNITY
- COUNTY SEAT
- SCHOOL
- COLLEGE OR UNIVERSITY
- COAST GUARD STATION
- CHURCH
- CEREMONY WITH CEMETERY
- CEMETERY
- PUBLIC STATION
- CORRECTION OR PENAL INSTITUTION
- QUARRY
- MINE OR PIT
- BOATYARD GARAGE OR MAINT YARD
- HIGHWAY DTY. OR DIST. OFFICE
- MILITARY POST
- WATER STATION
- FARMHOUSE
- HISTORICAL SITE
- POINTS OF INTEREST
- POST OFFICE
- STATE FOREST
- LIGHTHOUSE
- MOUNTAIN SUMMIT
- MOUNTAIN GAP
- OVERLOOK
- REST AREA
- VISITOR CTR. REST AREA
- WEL CODE CTR. REST AREA
- AMPHITHEATRE
- MILITARY AIRPORT
- NATIONAL STATE FOREST BOUNDARY
- WILDLIFE REFUGE
- NATIONAL STATE PARK BOUNDARY
- GAME LANDS BOUNDARY
- MILITARY RESERVATION BOUNDARY
- INDIAN RESERVATION BOUNDARY



PENDER COUNTY NORTH CAROLINA

PREPARED BY THE
NORTH CAROLINA DEPARTMENT OF TRANSPORTATION
OPERATIONS PROGRAM MANAGEMENT UNIT - MAPPING SECTION
IN COOPERATION WITH THE
U.S. DEPARTMENT OF TRANSPORTATION
FEDERAL HIGHWAY ADMINISTRATION
SCALE



NORTH CAROLINA PLANE COORDINATE SYSTEM
LAMBERT CONFORMAL CONIC PROJECTION