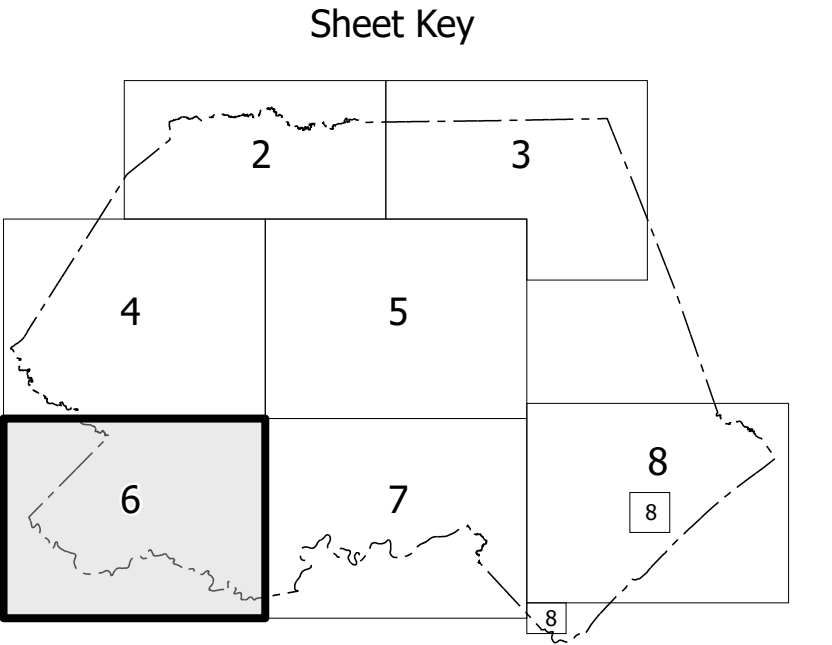
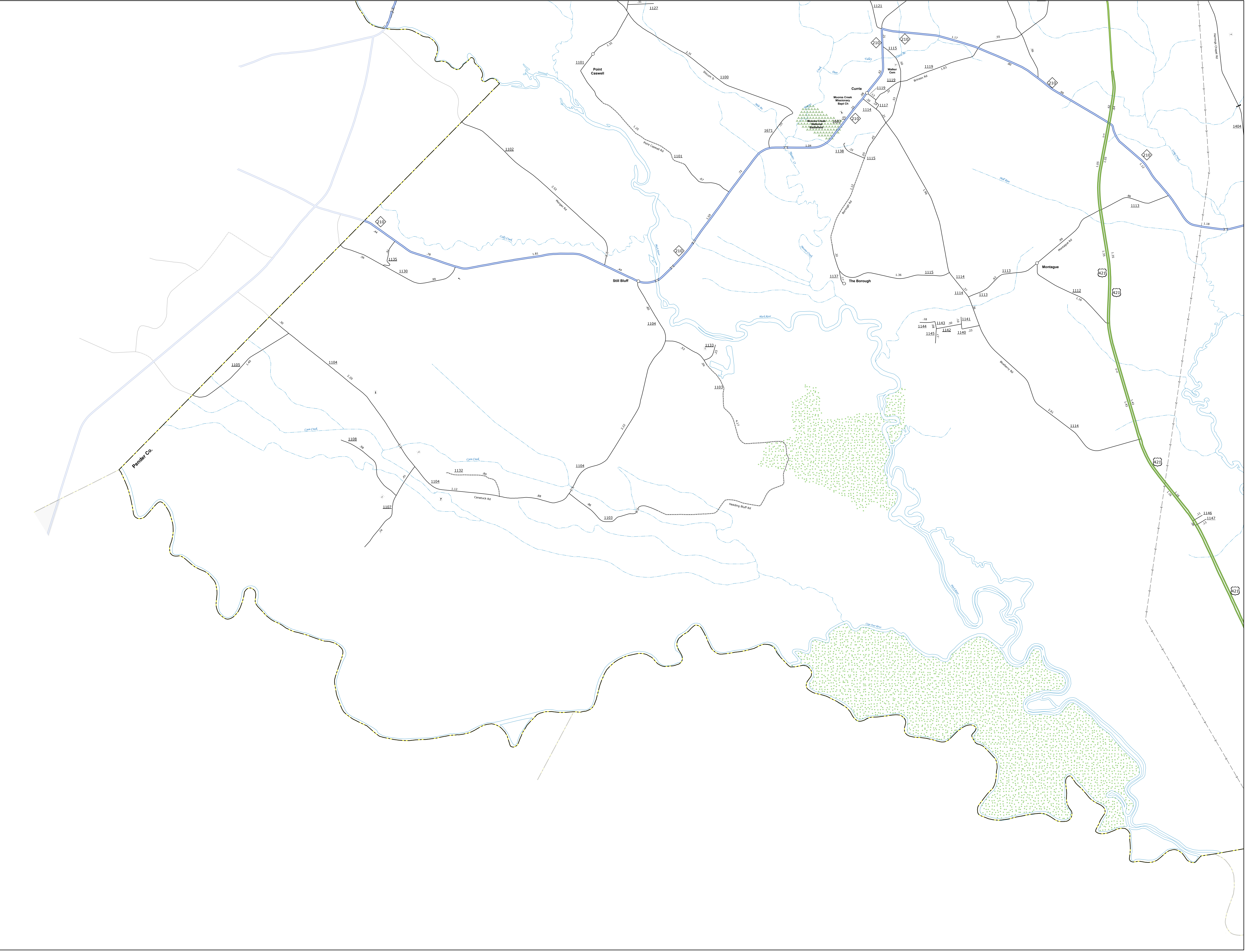
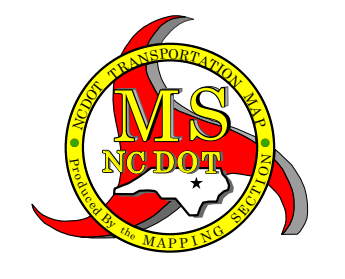
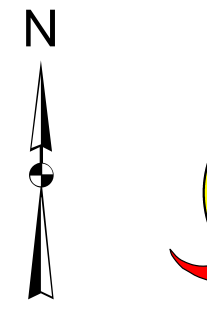


The Planning Section will not be responsible for the most accurate and current information possible. Map data is compiled from numerous sources with varying dates of publication and map accuracy standards. As a result, the accuracy of the information shown on this map cannot be guaranteed. For more information, please contact the Planning Section at (919) 855-4400. This document is not intended to be used as a legal instrument. For additional information, please contact the Planning Section at (919) 855-4400.

COPIES OF THIS MAP ARE AVAILABLE TO THE PUBLIC AT NO CHARGE. FOR MORE INFORMATION, PLEASE CONTACT THE PLANNING SECTION AT (919) 855-4400.

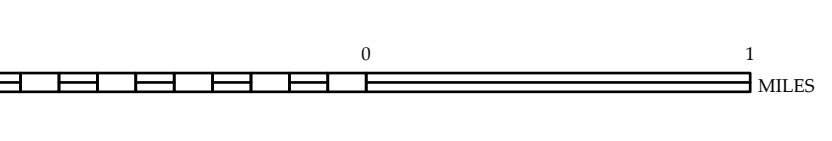


- LEGEND**
- INTERSTATE US NC
  - US 101
  - US 421
  - US 17
  - US 101
  - US 110
  - US 111
  - US 112
  - US 113
  - US 114
  - US 115
  - US 116
  - US 117
  - US 118
  - US 119
  - US 120
  - US 121
  - US 122
  - US 123
  - US 124
  - US 125
  - US 126
  - US 127
  - US 128
  - US 129
  - US 130
  - US 131
  - US 132
  - US 133
  - US 134
  - US 135
  - US 136
  - US 137
  - US 138
  - US 139
  - US 140
  - US 141
  - US 142
  - US 143
  - US 144
  - US 145
  - US 146
  - US 147
  - US 148
  - US 149
  - US 150
  - US 151
  - US 152
  - US 153
  - US 154
  - US 155
  - US 156
  - US 157
  - US 158
  - US 159
  - US 160
  - US 161
  - US 162
  - US 163
  - US 164
  - US 165
  - US 166
  - US 167
  - US 168
  - US 169
  - US 170
  - US 171
  - US 172
  - US 173
  - US 174
  - US 175
  - US 176
  - US 177
  - US 178
  - US 179
  - US 180
  - US 181
  - US 182
  - US 183
  - US 184
  - US 185
  - US 186
  - US 187
  - US 188
  - US 189
  - US 190
  - US 191
  - US 192
  - US 193
  - US 194
  - US 195
  - US 196
  - US 197
  - US 198
  - US 199
  - US 200
  - US 201
  - US 202
  - US 203
  - US 204
  - US 205
  - US 206
  - US 207
  - US 208
  - US 209
  - US 210
  - US 211
  - US 212
  - US 213
  - US 214
  - US 215
  - US 216
  - US 217
  - US 218
  - US 219
  - US 220
  - US 221
  - US 222
  - US 223
  - US 224
  - US 225
  - US 226
  - US 227
  - US 228
  - US 229
  - US 230
  - US 231
  - US 232
  - US 233
  - US 234
  - US 235
  - US 236
  - US 237
  - US 238
  - US 239
  - US 240
  - US 241
  - US 242
  - US 243
  - US 244
  - US 245
  - US 246
  - US 247
  - US 248
  - US 249
  - US 250
  - US 251
  - US 252
  - US 253
  - US 254
  - US 255
  - US 256
  - US 257
  - US 258
  - US 259
  - US 260
  - US 261
  - US 262
  - US 263
  - US 264
  - US 265
  - US 266
  - US 267
  - US 268
  - US 269
  - US 270
  - US 271
  - US 272
  - US 273
  - US 274
  - US 275
  - US 276
  - US 277
  - US 278
  - US 279
  - US 280
  - US 281
  - US 282
  - US 283
  - US 284
  - US 285
  - US 286
  - US 287
  - US 288
  - US 289
  - US 290
  - US 291
  - US 292
  - US 293
  - US 294
  - US 295
  - US 296
  - US 297
  - US 298
  - US 299
  - US 300



**PENDER COUNTY  
NORTH CAROLINA**

PREPARED BY THE  
NORTH CAROLINA DEPARTMENT OF TRANSPORTATION  
OPERATIONS PROGRAM MANAGEMENT UNIT - MAPPING SECTION  
IN COOPERATION WITH THE  
U.S. DEPARTMENT OF TRANSPORTATION  
FEDERAL HIGHWAY ADMINISTRATION



NORTH CAROLINA PLANE COORDINATE SYSTEM  
LAMBERT CONFORMAL CONIC PROJECTION