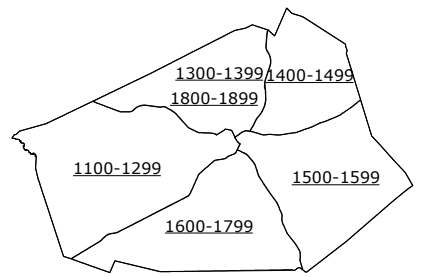
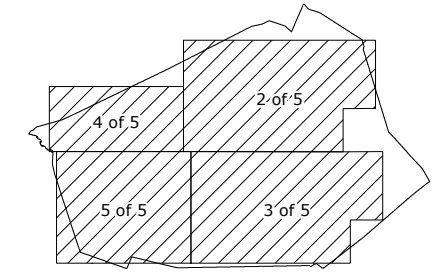
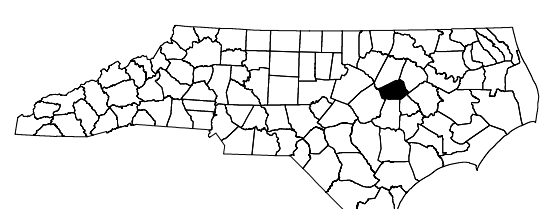
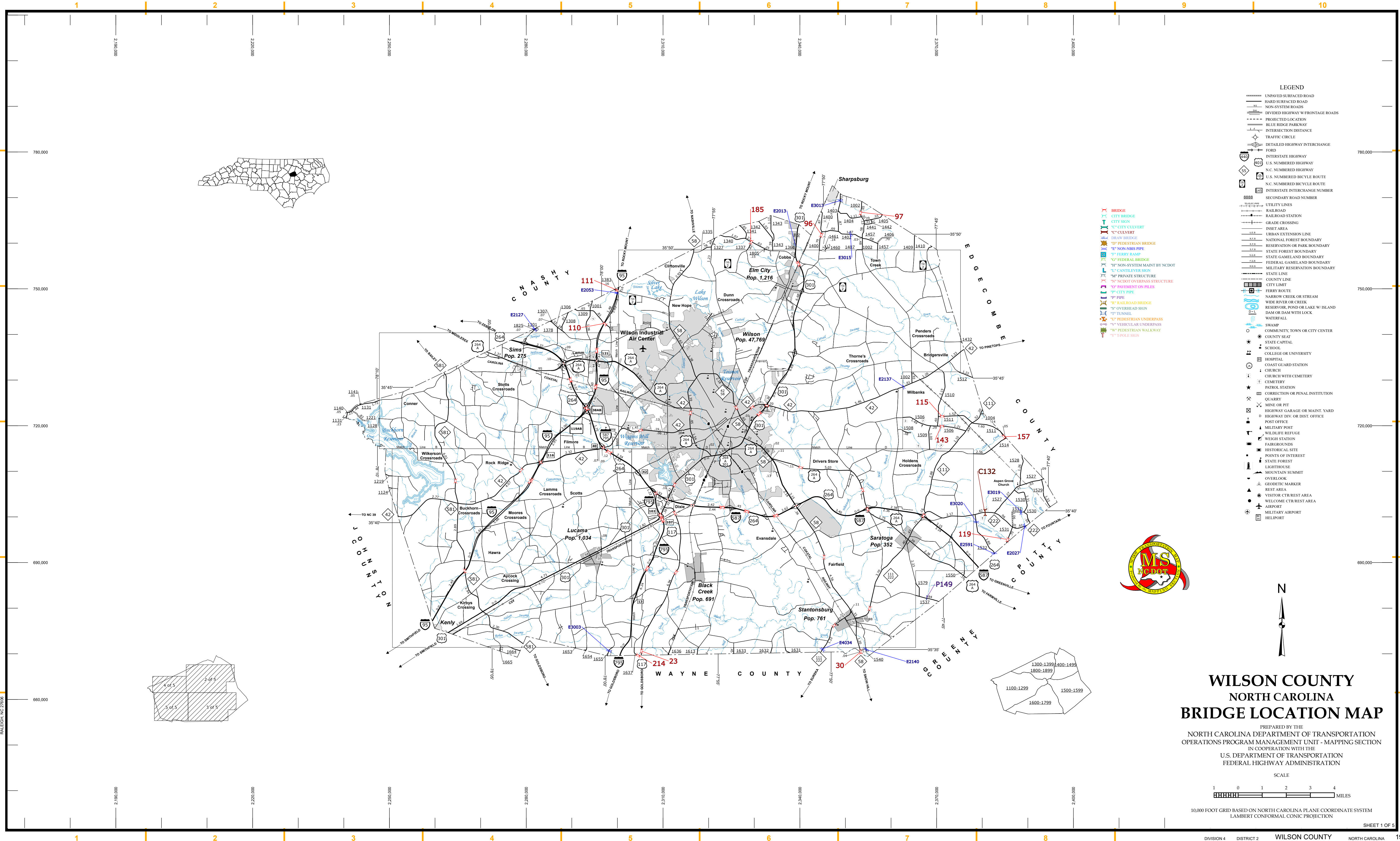


The Mapping Section's goal is to provide the most accurate and current information possible. Map data is compiled from various sources including aerial photography, ground surveys, and other data. The accuracy of the information is not guaranteed. The information is provided for informational purposes only. For additional information, visit www.ncdot.gov and click on Data Providers or contact us by phone at (919) 835-8480.

COPIES OF THIS MAP ARE AVAILABLE FROM THE PUBLIC AT NOMINAL COST. ADDRESS: N.C. DEPARTMENT OF TRANSPORTATION, MS4U - MAPPING SECTION, 4809 BERRY LANE, RALEIGH, NC 27635



- LEGEND**
- UNPAVED SURFACED ROAD
 - HARD SURFACED ROAD
 - NON-SYSTEM ROADS
 - DIVIDED HIGHWAYS W/ FRONTAGE ROADS
 - PROJECTED LOCATION
 - BLUE RIDGE PARKWAY
 - INTERSECTION DISTANCE
 - TRAFFIC CIRCLE
 - DETAILED HIGHWAY INTERCHANGE
 - FORD
 - INTERSTATE HIGHWAY
 - U.S. NUMBERED HIGHWAY
 - N.C. NUMBERED HIGHWAY
 - U.S. NUMBERED BICYCLE ROUTE
 - N.C. NUMBERED BICYCLE ROUTE
 - INTERSTATE INTERCHANGE NUMBER
 - SECONDARY ROAD NUMBER
 - UTILITY LINES
 - RAILROAD
 - RAILROAD STATION
 - GRADE CROSSING
 - INSET AREA
 - URBAN EXTENSION LINE
 - NATIONAL FOREST BOUNDARY
 - RESERVATION OR PARK BOUNDARY
 - STATE FOREST BOUNDARY
 - STATE GAMELAND BOUNDARY
 - FEDERAL GAMELAND BOUNDARY
 - MILITARY RESERVATION BOUNDARY
 - STATE LINE
 - COUNTY LINE
 - CITY LIMIT
 - FERRY ROUTE
 - NARROW CREEK OR STREAM
 - WIDE RIVER OR CREEK
 - RESERVOIR, POND OR LAKE W/ ISLAND
 - DAM OR DAM WITH LOCK
 - WATERFALL
 - SWAMP
 - COMMUNITY, TOWN OR CITY CENTER
 - COUNTY SEAT
 - STATE CAPITAL
 - SCHOOL
 - COLLEGE OR UNIVERSITY
 - HOSPITAL
 - COAST GUARD STATION
 - CHURCH
 - CHURCH WITH CEMETERY
 - CEMETERY
 - PATROL STATION
 - CORRECTION OR PENAL INSTITUTION
 - QUARRY
 - MINE OR PIT
 - HIGHWAY GARAGE OR MAINT. YARD
 - HIGHWAY DIV. OR DIST. OFFICE
 - POST OFFICE
 - MILITARY POST
 - WILDLIFE REFUGE
 - WEIGH STATION
 - FAIRGROUNDS
 - HISTORICAL SITE
 - POINTS OF INTEREST
 - STATE FOREST
 - LIGHTHOUSE
 - MONUMENTAL SUMMIT
 - OVERLOOK
 - GEODETIC MARKER
 - REST AREA
 - VISITOR CENTER REST AREA
 - WELCOME CENTER REST AREA
 - AIRPORT
 - MILITARY AIRPORT
 - HELIPORT

- BRIDGE
- CITY BRIDGE
- CITY SIGN
- CITY CULVERT
- CULVERT
- DRAW BRIDGE
- PEDESTRIAN BRIDGE
- NON-NBHS PIPE
- FERRY RAM
- FEDERAL BRIDGE
- NON-SYSTEM MAINT BY NCDOT
- CANTILEVER SIGN
- PRIVATE STRUCTURE
- NCDOT OVERPASS STRUCTURE
- PAVEMENT ON PILES
- CITY PIPE
- PIPE
- RAILROAD BRIDGE
- OVERHEAD SIGN
- PEDESTRIAN UNDERPASS
- VEHICULAR UNDERPASS
- PEDESTRIAN WALKWAY
- TPOLE SIGN



WILSON COUNTY
NORTH CAROLINA
BRIDGE LOCATION MAP

PREPARED BY THE
 NORTH CAROLINA DEPARTMENT OF TRANSPORTATION
 OPERATIONS PROGRAM MANAGEMENT UNIT - MAPPING SECTION
 IN COOPERATION WITH THE
 U.S. DEPARTMENT OF TRANSPORTATION
 FEDERAL HIGHWAY ADMINISTRATION

SCALE
 1 0 1 2 3 4
 MILES

10,000 FOOT GRID BASED ON NORTH CAROLINA PLANE COORDINATE SYSTEM
 LAMBERT CONFORMAL CONIC PROJECTION