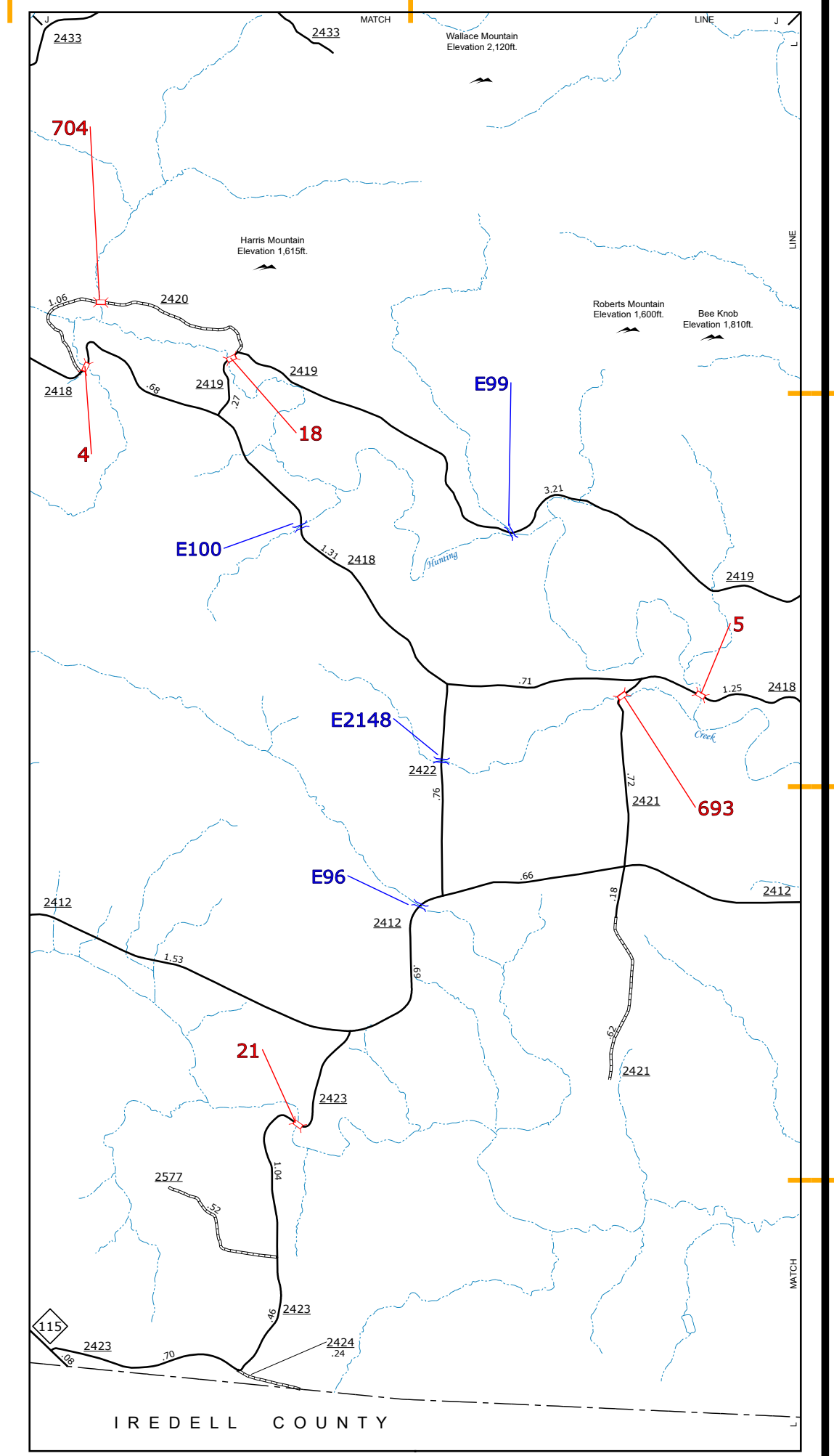


The Mapping Section's goal is to provide the most accurate and current information possible. Map data is compiled from various sources including aerial photography, ground surveys, and other data. The accuracy of the information is dependent on the accuracy of the data provided. The information is not intended to be used for any purpose other than the one intended. For more information, visit <http://www.ncdot.gov/transportation/mapping> and click on Data Providers or contact us by phone at (919) 835-8480.

COPIES OF THIS MAP ARE AVAILABLE TO THE PUBLIC AT NOMINAL COST. ADDRESS: N.C. DEPARTMENT OF TRANSPORTATION, MSAU - MAPPING SECTION, 6001 BERRY LANE, RALEIGH, NC 27609



ENLARGED MUNICIPAL AND SUBURBAN AREAS
WILKES COUNTY
NORTH CAROLINA
BRIDGE LOCATION MAP

PREPARED BY THE
NORTH CAROLINA DEPARTMENT OF TRANSPORTATION
OPERATIONS PROGRAM MANAGEMENT UNIT - MAPPING SECTION
IN COOPERATION WITH THE
U.S. DEPARTMENT OF TRANSPORTATION
FEDERAL HIGHWAY ADMINISTRATION

SCALE
1 0 1 MILES

10,000 FOOT GRID BASED ON NORTH CAROLINA PLANE COORDINATE SYSTEM
LAMBERT CONFORMAL CONIC PROJECTION

Rhonda and Vicinity

SHEET 4 OF 6

DIVISION 11 DISTRICT 3 WILKES COUNTY NORTH CAROLINA 193

- BRIDGE
- CITY BRIDGE
- CITY SIGN
- CITY CULVERT
- CULVERT
- DRAW BRIDGE
- PEDESTRIAN BRIDGE
- NON-SUB PIPE
- FERRY RAMP
- FEDERAL BRIDGE
- NON-SYSTEM MAINT BY NCDOT
- CASTLE OVERPASS STRUCTURE
- NON-SYSTEM MAINT BY NCDOT
- PRIVATE STRUCTURE
- NCDOT OVERPASS STRUCTURE
- PAVEMENT ON PILES
- CITY PIPE
- PIPE
- RAILROAD BRIDGE
- OVERHEAD SIGN
- TUNNEL
- PEDESTRIAN UNDERPASS
- VEHICULAR UNDERPASS
- PEDESTRIAN WALKWAY
- TRENCH SIGN

