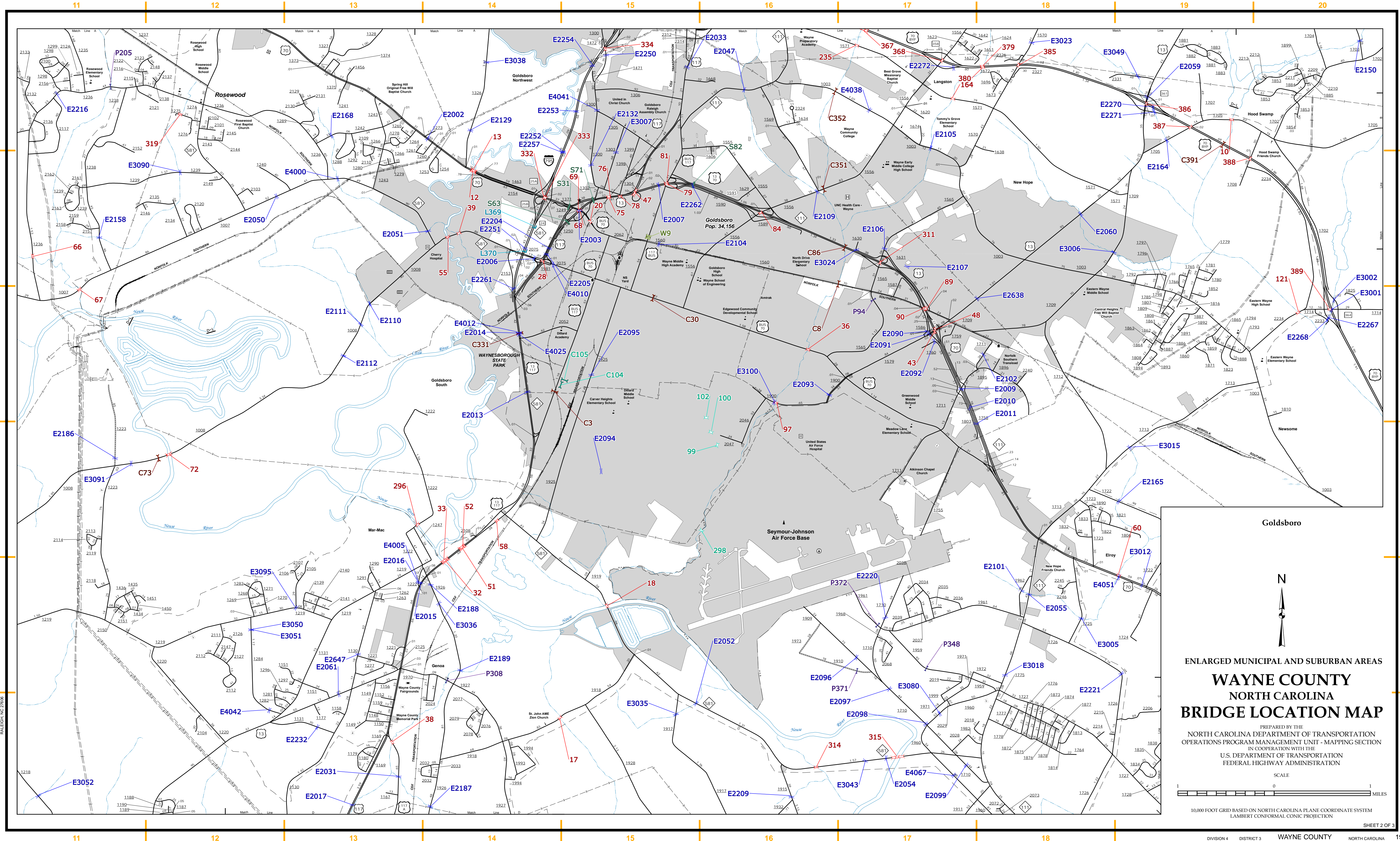


The Mapping Section's goal is to provide the most accurate and current information possible. Map data is compiled from various sources including aerial photography, ground surveys, and other data. The accuracy of the information is dependent on the quality of the data. The Mapping Section is not responsible for errors or omissions. For more information, visit <http://www.ncdot.gov/mapping> and click on Data Providers or contact us by phone at (919) 855-8480.

COPIES OF THIS MAP ARE AVAILABLE FOR PURCHASE AT A PUBLIC UTILITY RATE. ADDRESS: MAPPING SECTION, 4809 BERRY LANE, RALEIGH, NC 27616



ENLARGED MUNICIPAL AND SUBURBAN AREAS
WAYNE COUNTY
NORTH CAROLINA
BRIDGE LOCATION MAP

PREPARED BY THE
NORTH CAROLINA DEPARTMENT OF TRANSPORTATION
OPERATIONS PROGRAM MANAGEMENT UNIT - MAPPING SECTION
IN COOPERATION WITH THE
U.S. DEPARTMENT OF TRANSPORTATION
FEDERAL HIGHWAY ADMINISTRATION

SCALE
1 0 1
MILES

10,000 FOOT GRID BASED ON NORTH CAROLINA PLANE COORDINATE SYSTEM
LAMBERT CONFORMAL CONIC PROJECTION