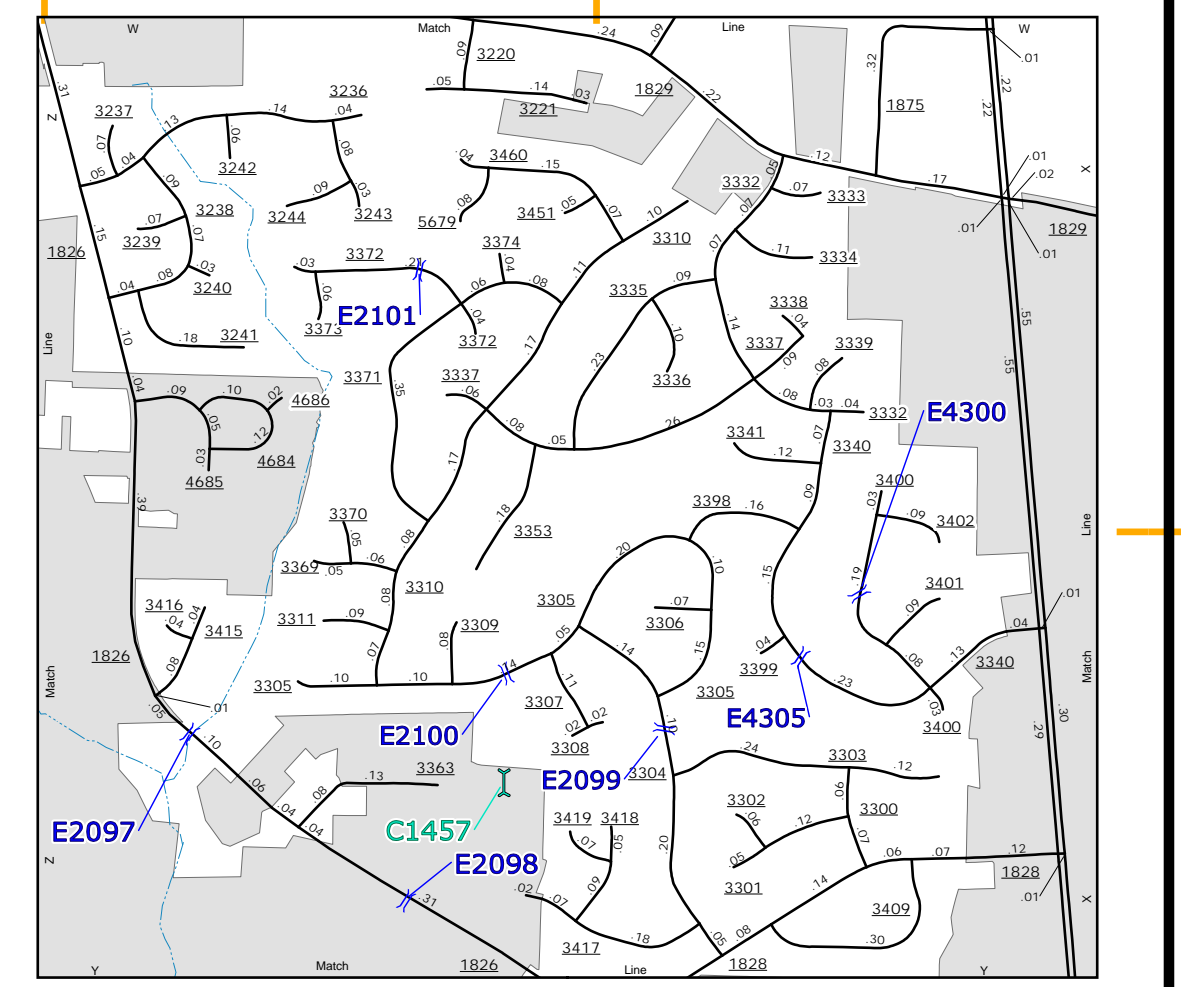
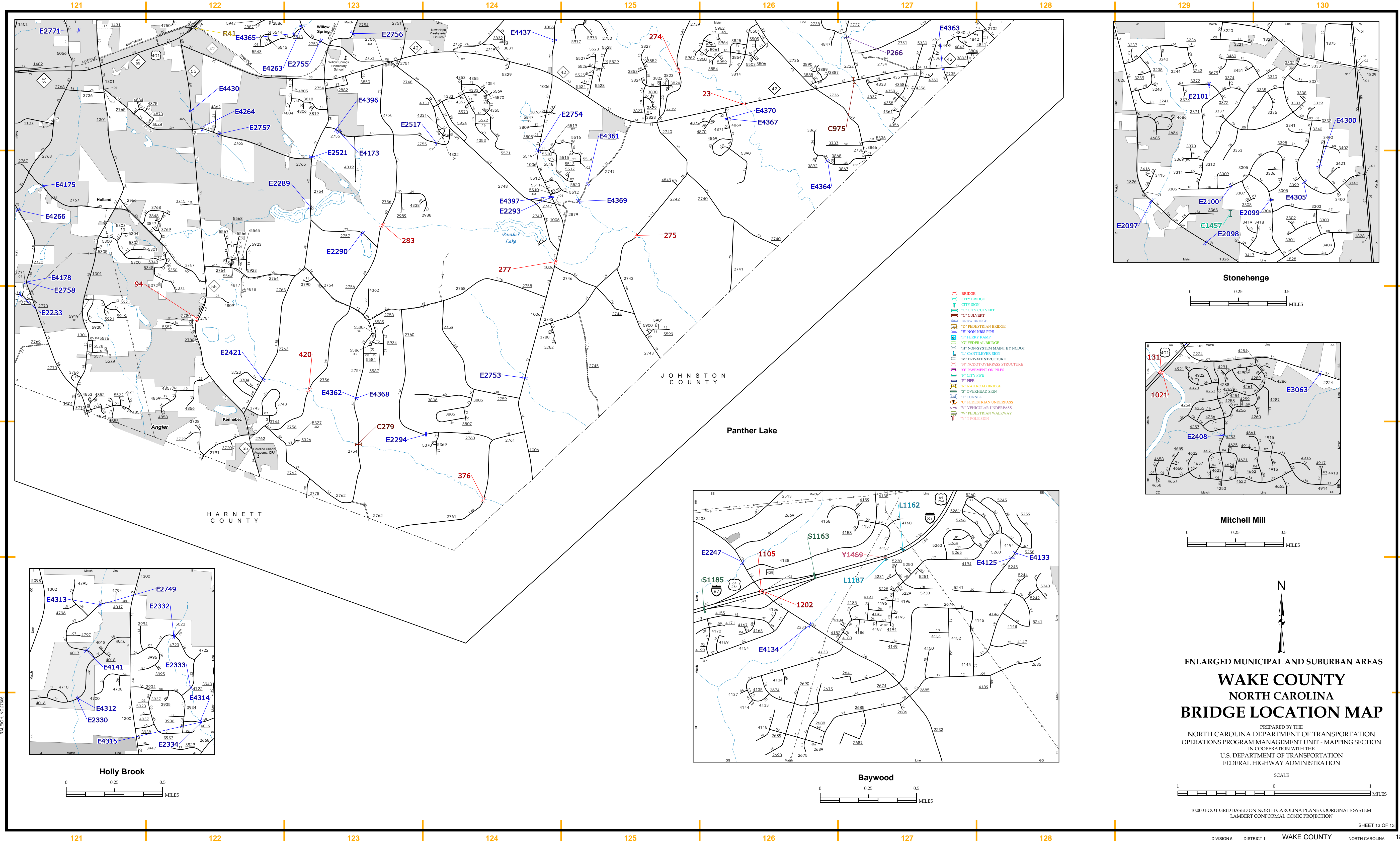
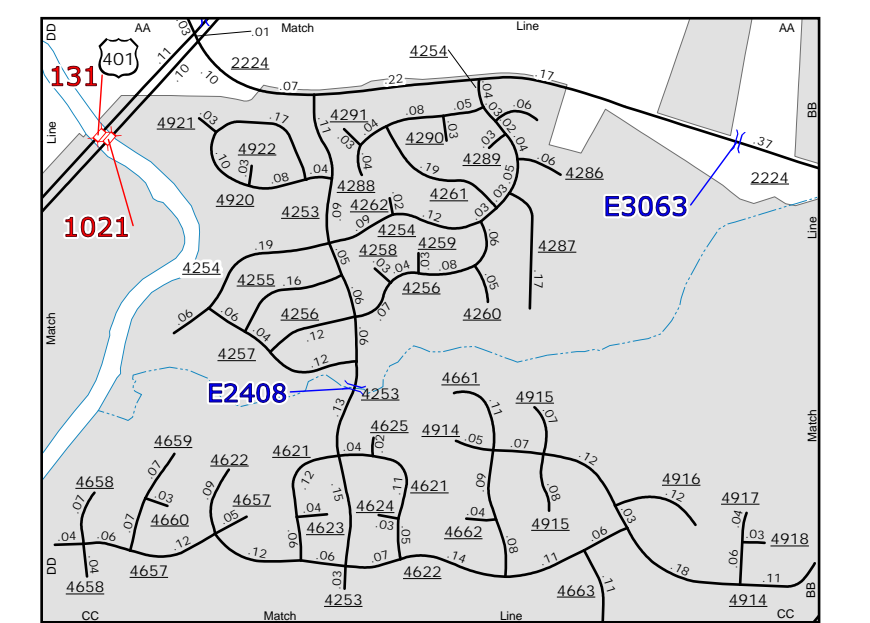


The Mapping Section's goal is to provide the most accurate and current information possible. Map data is compiled from various sources including aerial photography, ground surveys, and other data. The accuracy of the information is not guaranteed. For more information, please visit the website at <http://www.ncdot.gov/transportation/mapping> and click on Data Providers or contact us by phone at (919) 855-8480.

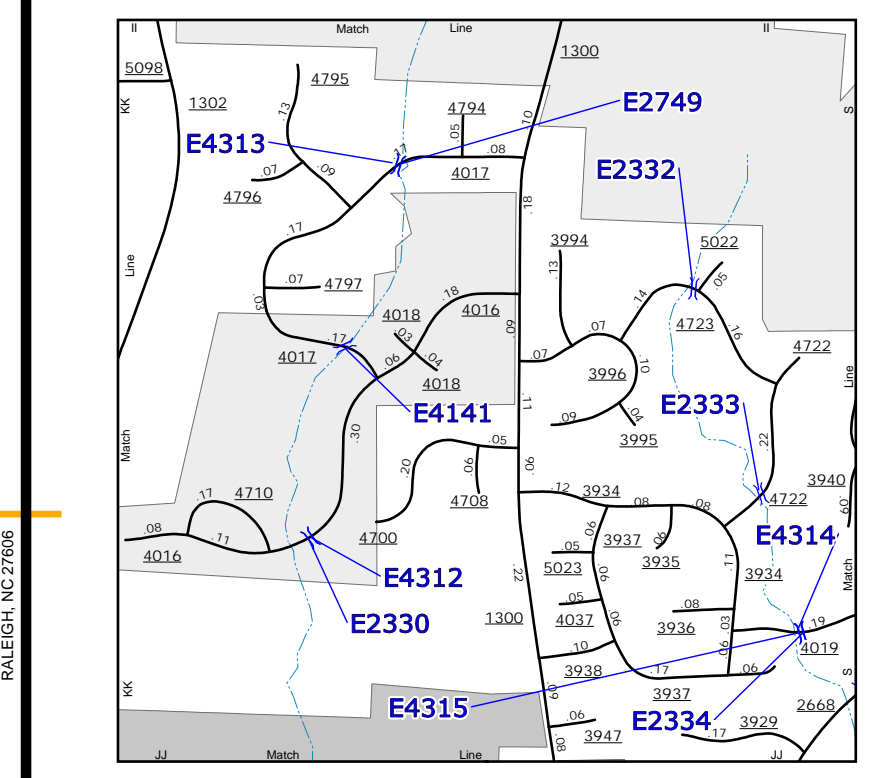
COPIES OF THIS MAP ARE AVAILABLE FOR PURCHASE AT A PUBLIC UTILITY RATE. ADDRESS: N.C. DEPARTMENT OF TRANSPORTATION, MSAU - MAPPING SECTION, 4609 BERRY LANE, RALEIGH, NC 27606



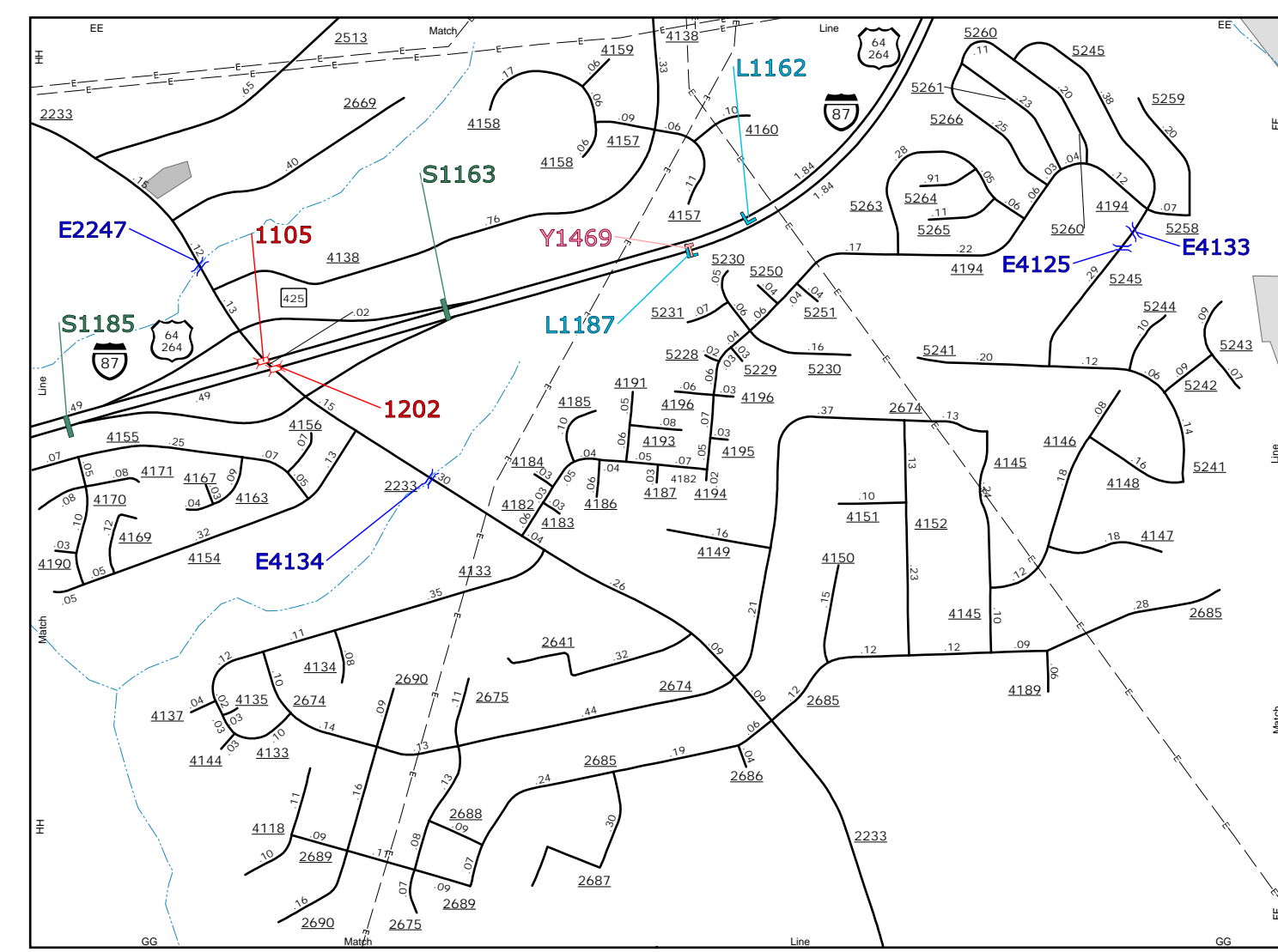
Stonehenge
0 0.25 0.5 MILES



Mitchell Mill
0 0.25 0.5 MILES



Holly Brook
0 0.25 0.5 MILES



Baywood
0 0.25 0.5 MILES

- BRIDGE
- CITY BRIDGE
- CITY SKIN
- CITY CULVERT
- C CULVERT
- DRAW BRIDGE
- PEDESTRIAN BRIDGE
- NON-NBS PIPE
- FERRY RAMP
- FEDERAL BRIDGE
- NON-SYSTEM MAINT BY NCDOT
- CANTILEVER SIGN
- PRIVATE STRUCTURE
- NCDOT OVERPASS STRUCTURE
- OVERPASS
- CITY PIPE
- PIPE
- RAIL ROAD BRIDGE
- OVERHEAD SIGN
- TUNNEL
- PEDESTRIAN UNDERPASS
- VEHICULAR UNDERPASS
- PEDESTRIAN WALKWAY
- FLOOR SIGN

N

ENLARGED MUNICIPAL AND SUBURBAN AREAS

WAKE COUNTY

NORTH CAROLINA

BRIDGE LOCATION MAP

PREPARED BY THE
NORTH CAROLINA DEPARTMENT OF TRANSPORTATION
OPERATIONS PROGRAM MANAGEMENT UNIT - MAPPING SECTION
IN COOPERATION WITH THE
U.S. DEPARTMENT OF TRANSPORTATION
FEDERAL HIGHWAY ADMINISTRATION

SCALE
0 1 MILES

10,000 FOOT GRID BASED ON NORTH CAROLINA PLANE COORDINATE SYSTEM
LAMBERT CONFORMAL CONIC PROJECTION

SHEET 13 OF 13