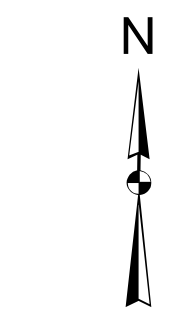


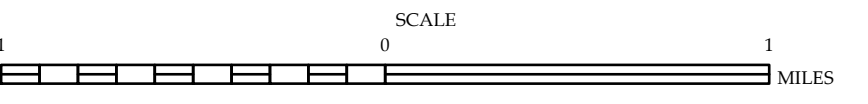
CHATHAM COUNTY

Cary



ENLARGED MUNICIPAL AND SUBURBAN AREAS  
**WAKE COUNTY**  
 NORTH CAROLINA  
**BRIDGE LOCATION MAP**

PREPARED BY THE  
 NORTH CAROLINA DEPARTMENT OF TRANSPORTATION  
 OPERATIONS PROGRAM MANAGEMENT UNIT - MAPPING SECTION  
 IN COOPERATION WITH THE  
 U.S. DEPARTMENT OF TRANSPORTATION  
 FEDERAL HIGHWAY ADMINISTRATION



10,000 FOOT GRID BASED ON NORTH CAROLINA PLANE COORDINATE SYSTEM  
 LAMBERT CONFORMAL CONIC PROJECTION

The Mapping Section's goal is to provide the most accurate and current information possible. Map data is compiled from various sources including aerial photography, ground surveys, and other data. The accuracy of the information is not guaranteed. For more information, please contact the Mapping Section at (919) 855-8480.

COPIES OF THIS MAP ARE AVAILABLE AT THE PUBLIC INFORMATION CENTER, ADDRESS: MAPPING SECTION, 4800 BERRY LANE, RALEIGH, NC 27606