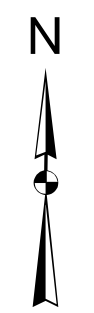


CHATHAM COUNTY

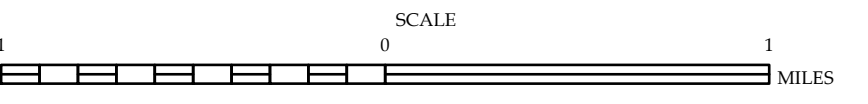
Cary

- BRIDGE
- CITY SKIN
- CITY CULVERT
- CULVERT
- DRAIN BRIDGE
- PEDESTRIAN BRIDGE
- NON-NBIS PIPE
- FERRY RAMP
- FEDERAL BRIDGE
- NON-SYSTEM MAINT BY NCDOT
- CANTILEVER SKIN
- PRIVATE STRUCTURE
- NCDOT OVERPASS STRUCTURE
- OVERPASS FOR PILES
- CITY PIPE
- PIPE
- RAILROAD BRIDGE
- OVERHEAD SKIN
- TUNNEL
- VEHICULAR UNDERPASS
- PEDESTRIAN UNDERPASS
- POLE SKIN



ENLARGED MUNICIPAL AND SUBURBAN AREAS  
**WAKE COUNTY**  
 NORTH CAROLINA  
**BRIDGE LOCATION MAP**

PREPARED BY THE  
 NORTH CAROLINA DEPARTMENT OF TRANSPORTATION  
 OPERATIONS PROGRAM MANAGEMENT UNIT - MAPPING SECTION  
 IN COOPERATION WITH THE  
 U.S. DEPARTMENT OF TRANSPORTATION  
 FEDERAL HIGHWAY ADMINISTRATION



10,000 FOOT GRID BASED ON NORTH CAROLINA PLANE COORDINATE SYSTEM  
 LAMBERT CONFORMAL CONIC PROJECTION

THE MAPPING SECTION'S GOALS IS TO PROVIDE THE MOST ACCURATE AND CURRENT INFORMATION POSSIBLE. MAP DATA IS COMPILED FROM AERIAL PHOTOGRAPHS, GROUND SURVEYS, AND OTHER SOURCES. THE ACCURACY OF THE DATA IS NOT GUARANTEED. THE USER ASSUMES ALL LIABILITY FOR THE USE OF THIS INFORMATION. FOR ADDITIONAL INFORMATION, VISIT [WWW.NCDOT.GOV/TRANSPORTATION/MAPPING](http://www.ncdot.gov/transportation/mapping) AND CALL OR DATA PROVIDER OR CONTACT US BY PHONE AT (919) 855-8480.

COPIES OF THIS MAP ARE AVAILABLE TO THE PUBLIC AT A NOMINAL COST. ADDRESS: MAPPING SECTION, N.C. DEPARTMENT OF TRANSPORTATION, 4800 BERRY LANE, RALEIGH, NC 27689