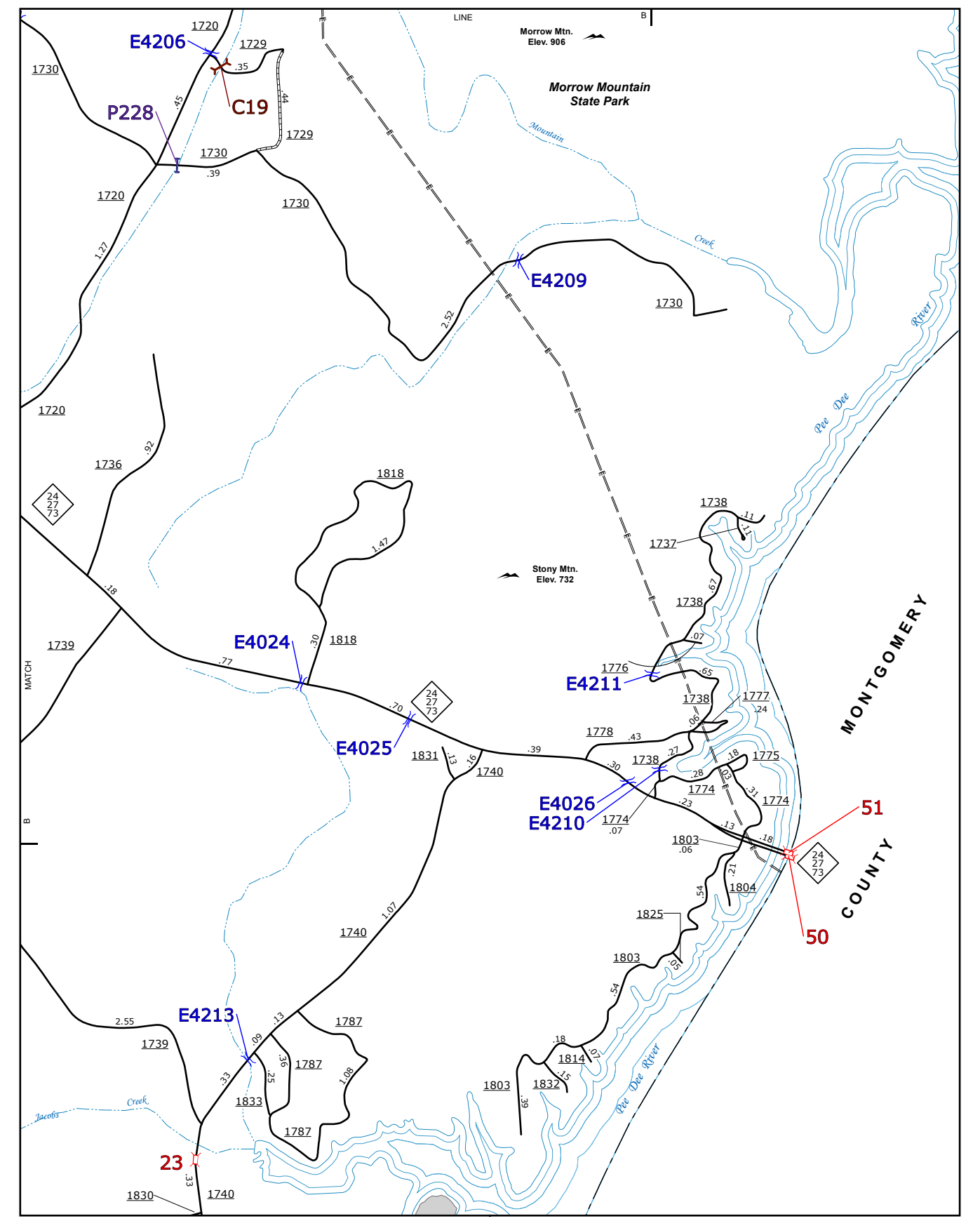


Oakboro, Red Cross and Vicinity



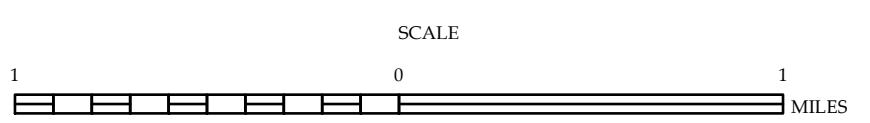
Stony Mountain and Vicinity

- BRIDGE
- CITY BRIDGE
- CITY SIGN
- CITY CULVERT
- "C" CULVERT
- DRAW BRIDGE
- "D" PEDESTRIAN BRIDGE
- "E" NON-NBIS PIPE
- "F" FERRY RAMP
- "G" FEDERAL BRIDGE
- "H" NON-SYSTEM MAINT BY NCDOT
- "L" CANTILEVER SIGN
- "M" PRIVATE STRUCTURE
- "N" NCDOT OVERPASS STRUCTURE
- "O" PAVEMENT ON FILES
- "P" CITY PIPE
- "R" PIPE
- "S" RAILROAD BRIDGE
- "T" TUNNEL
- "U" PEDESTRIAN UNDERPASS
- "V" VEHICULAR UNDERPASS
- "W" PEDESTRIAN WALKWAY
- "Y" T-POLE SIGN



ENLARGED MUNICIPAL AND SUBURBAN AREAS
STANLY COUNTY
 NORTH CAROLINA
BRIDGE LOCATION MAP

PREPARED BY THE
 NORTH CAROLINA DEPARTMENT OF TRANSPORTATION
 OPERATIONS PROGRAM MANAGEMENT UNIT - MAPPING SECTION
 IN COOPERATION WITH THE
 U.S. DEPARTMENT OF TRANSPORTATION
 FEDERAL HIGHWAY ADMINISTRATION



10,000 FOOT GRID BASED ON NORTH CAROLINA PLANE COORDINATE SYSTEM
 LAMBERT CONFORMAL CONIC PROJECTION

COPIES OF THIS MAP ARE AVAILABLE
 AT THE STANLY COUNTY GOVERNMENT CENTER
 400 BERNAL RD
 STANLY, NC 28153
 N.C. DEPARTMENT OF TRANSPORTATION
 MS4U MAPPING SECTION
 4801 BERNAL RD
 RALEIGH, NC 27606
 (919) 855-8480
 The Mapping Section's goal is to provide the most accurate and current information possible. Map data is compiled
 from various sources including aerial photography, ground surveys, and other data. The accuracy of the data is
 dependent on the quality of the source data. The information on this map is for informational purposes only and
 should not be used for any purpose for which it was not intended. For additional information, visit
 the website at <http://www.ncdot.gov/transportation/ms4u> and click on Data Providers or contact us by phone at (919) 855-8480.