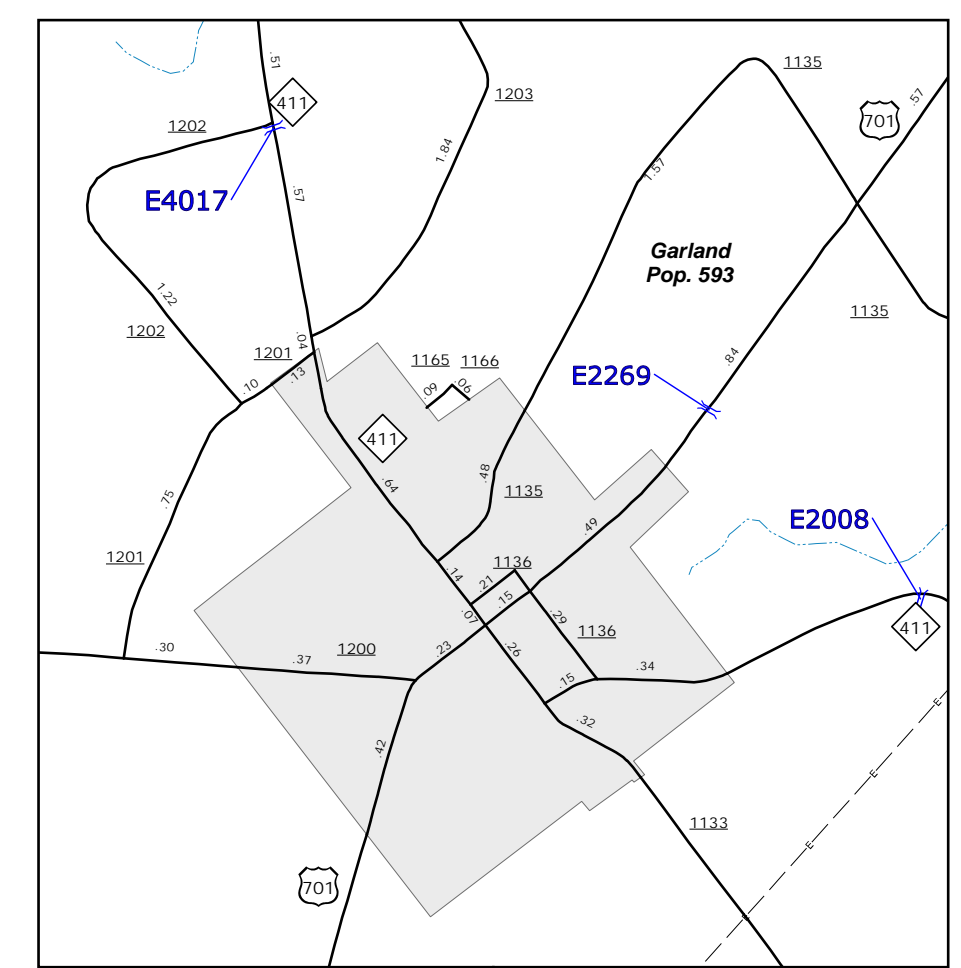


Lee's Chapel Area

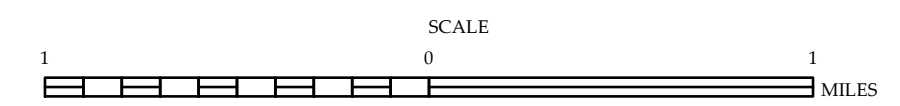


Garland



## ENLARGED MUNICIPAL AND SUBURBAN AREAS SAMPSON COUNTY NORTH CAROLINA BRIDGE LOCATION MAP

PREPARED BY THE  
NORTH CAROLINA DEPARTMENT OF TRANSPORTATION  
OPERATIONS PROGRAM MANAGEMENT UNIT - MAPPING SECTION  
IN COOPERATION WITH THE  
U.S. DEPARTMENT OF TRANSPORTATION  
FEDERAL HIGHWAY ADMINISTRATION



10,000 FOOT GRID BASED ON NORTH CAROLINA PLANE COORDINATE SYSTEM  
LAMBERT CONFORMAL CONIC PROJECTION

- BRIDGE
- CITY BRIDGE
- CITY SIGN
- CITY CULVERT
- CULVERT
- DRAW BRIDGE
- PEDESTRIAN BRIDGE
- NON-NBIS PIPE
- FERRY RAMP
- FEDERAL BRIDGE
- NON-SYSTEM MAINT BY NCDOT
- CANTILEVER SIGN
- PRIVATE STRUCTURE
- NCDOT OVERPASS STRUCTURE
- PARALLEL OVERPASS
- CITY PIPE
- PIPE
- RAILROAD BRIDGE
- OVERHEAD SIGN
- TUNNEL
- PEDESTRIAN UNDERPASS
- VEHICULAR UNDERPASS
- PEDESTRIAN WALKWAY
- POLE SIGN

COPIES OF THIS MAP ARE AVAILABLE  
 AT THE NORTH CAROLINA DEPARTMENT OF TRANSPORTATION  
 ADDRESS: 4800 BERNAL RD.  
 RALEIGH, NC 27635

The Mapping Section's goal is to provide the most accurate and current information possible. Map data is compiled  
 from various sources including aerial photography, ground surveys, and other data. The information is subject to  
 change without notice. For additional information, visit  
 http://www.ncdot.gov/transportation/mapping/ and click on Data Providers or contact us by phone at (919) 855-8480.

Clinton