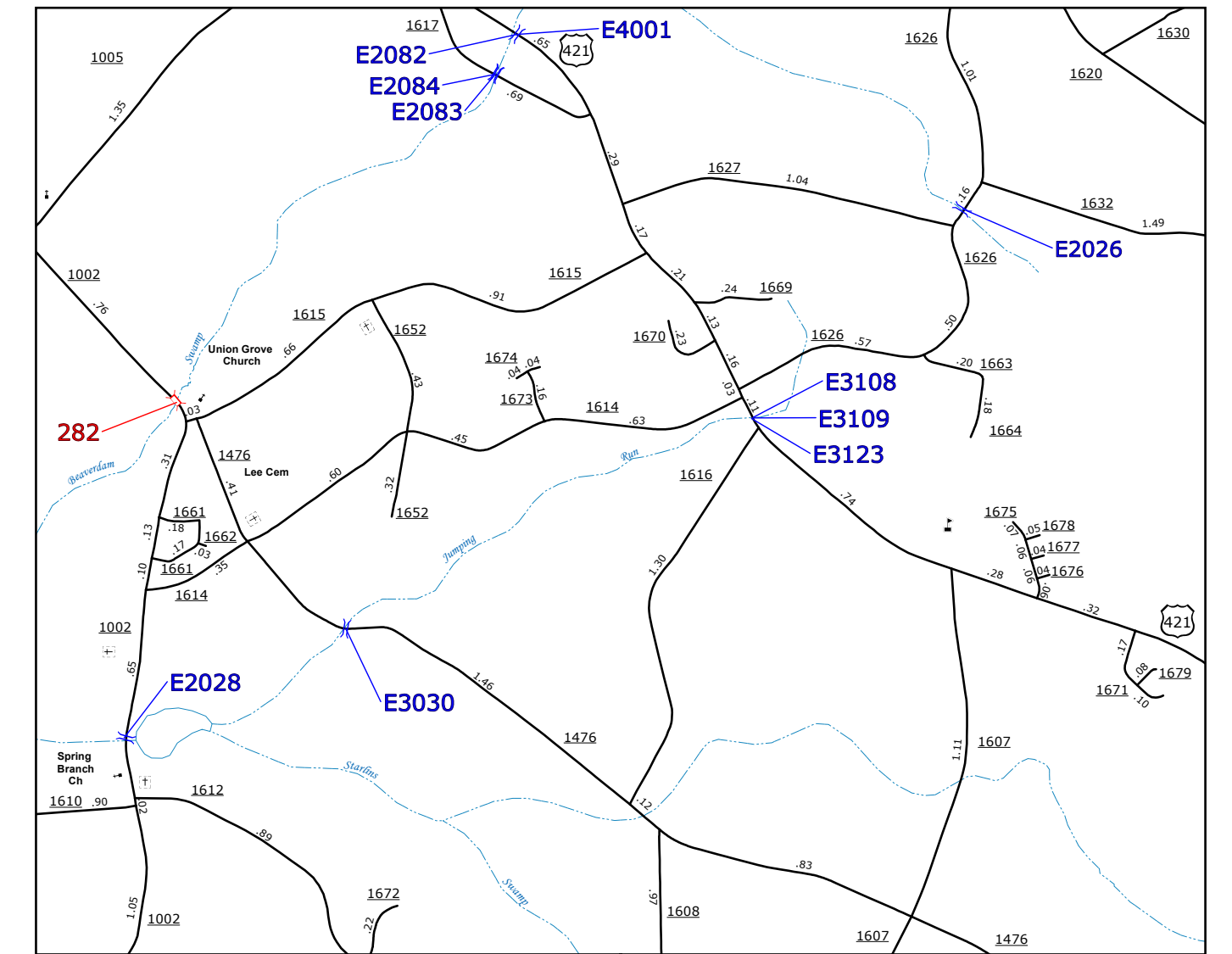


The Mapping Section's goal is to provide the most accurate and current information possible. Map data is compiled from numerous sources with varying dates of publication and map accuracy standards. As a result, the accuracy and currency and completeness of the data provided will vary. This map includes state-maintained roads and important non-system roads.

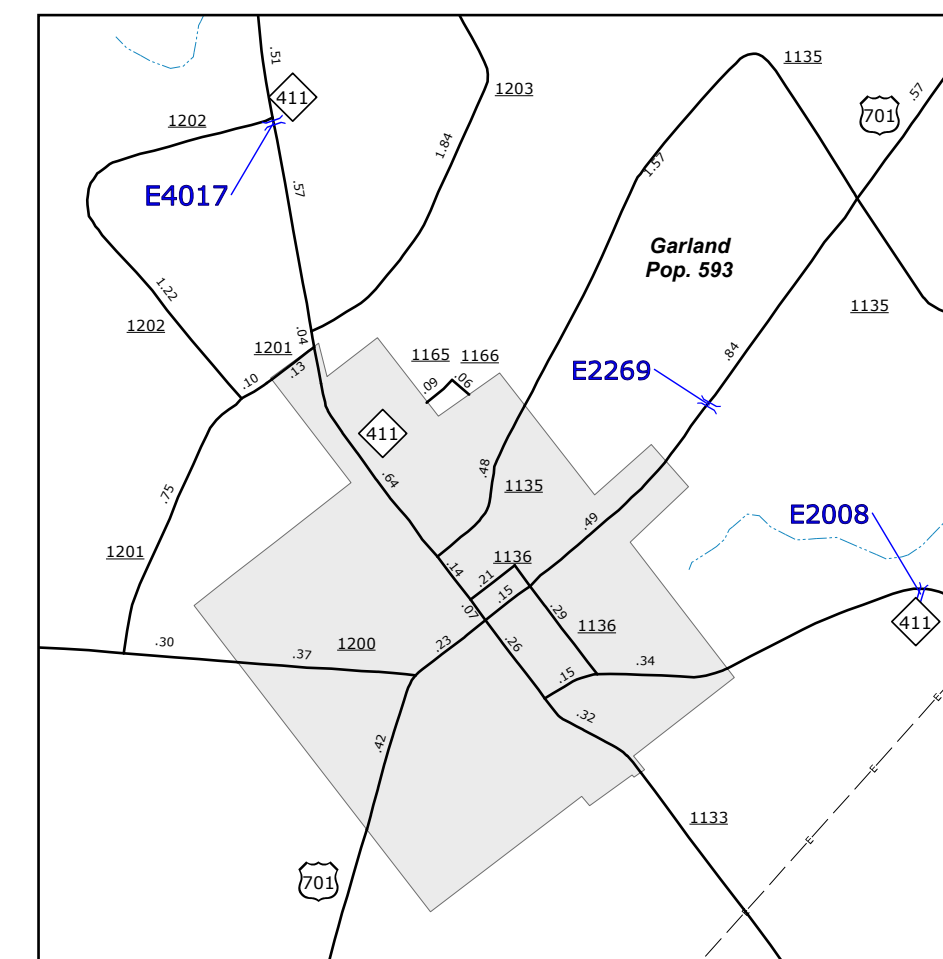
The information shown on this map was last updated in September 2022. For additional information, visit <http://www.mn.gov/roads/statemapping> and click on Data Providers or contact us by phone at (919) 835-6480.

COPIES OF THIS MAP ARE AVAILABLE
TO THE PUBLIC AT NOMINAL COST.
ADDRESS:

N.C. DEPARTMENT OF TRANSPORTATION
MSAU - MAPPING SECTION
4100 S. BRIDGES RD.
Raleigh, NC 27606



Lee's Chapel Area

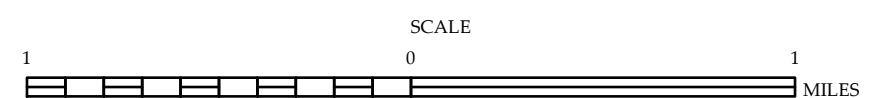


Garland



ENLARGED MUNICIPAL AND SUBURBAN AREAS SAMPSON COUNTY NORTH CAROLINA BRIDGE LOCATION MAP

PREPARED BY THE
NORTH CAROLINA DEPARTMENT OF TRANSPORTATION
OPERATIONS PROGRAM MANAGEMENT UNIT - MAPPING SECTION
IN COOPERATION WITH THE
U.S. DEPARTMENT OF TRANSPORTATION
FEDERAL HIGHWAY ADMINISTRATION



10,000 FOOT GRID BASED ON NORTH CAROLINA PLANE COORDINATE SYSTEM
LAMBERT CONFORMAL CONIC PROJECTION