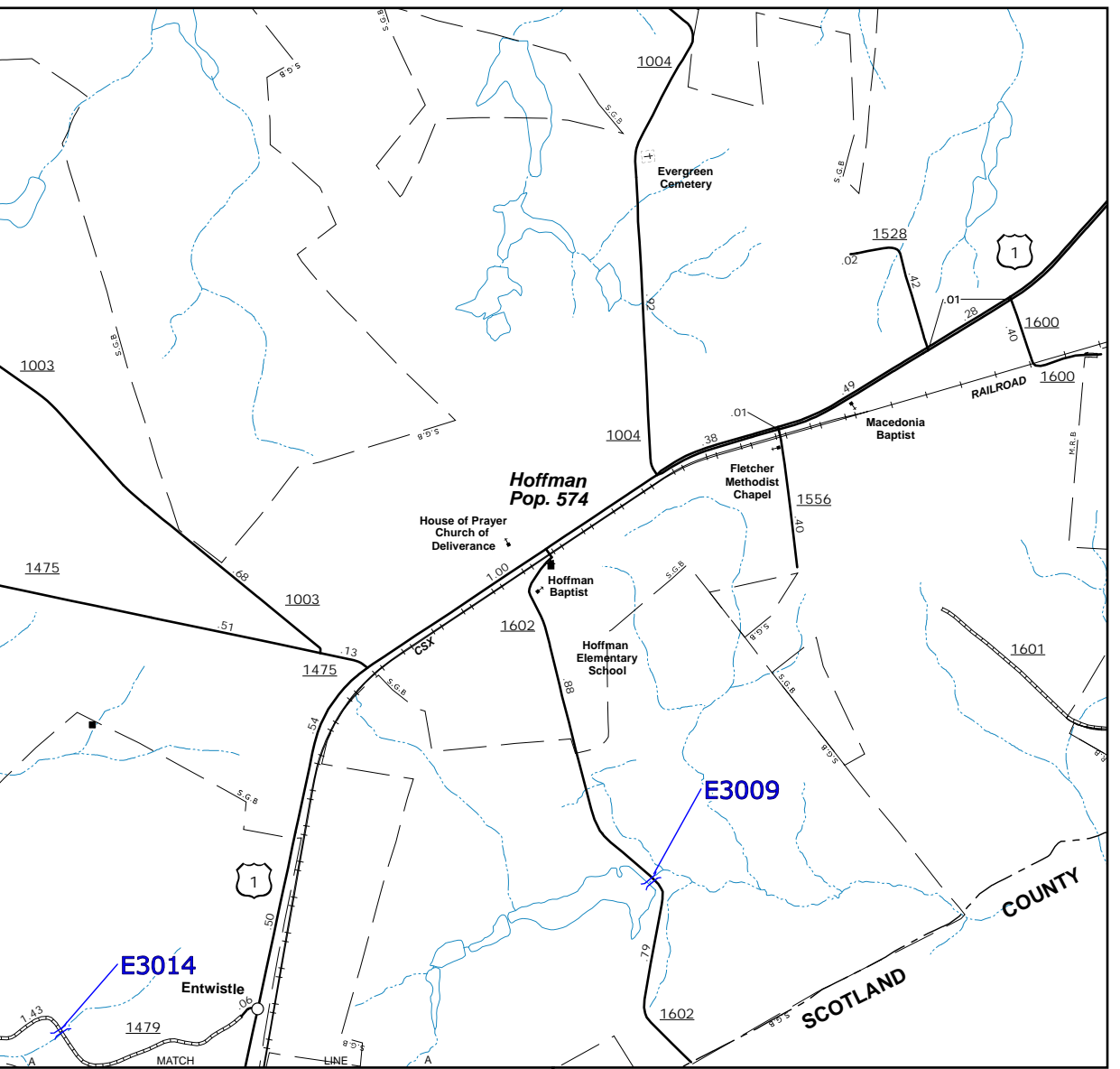
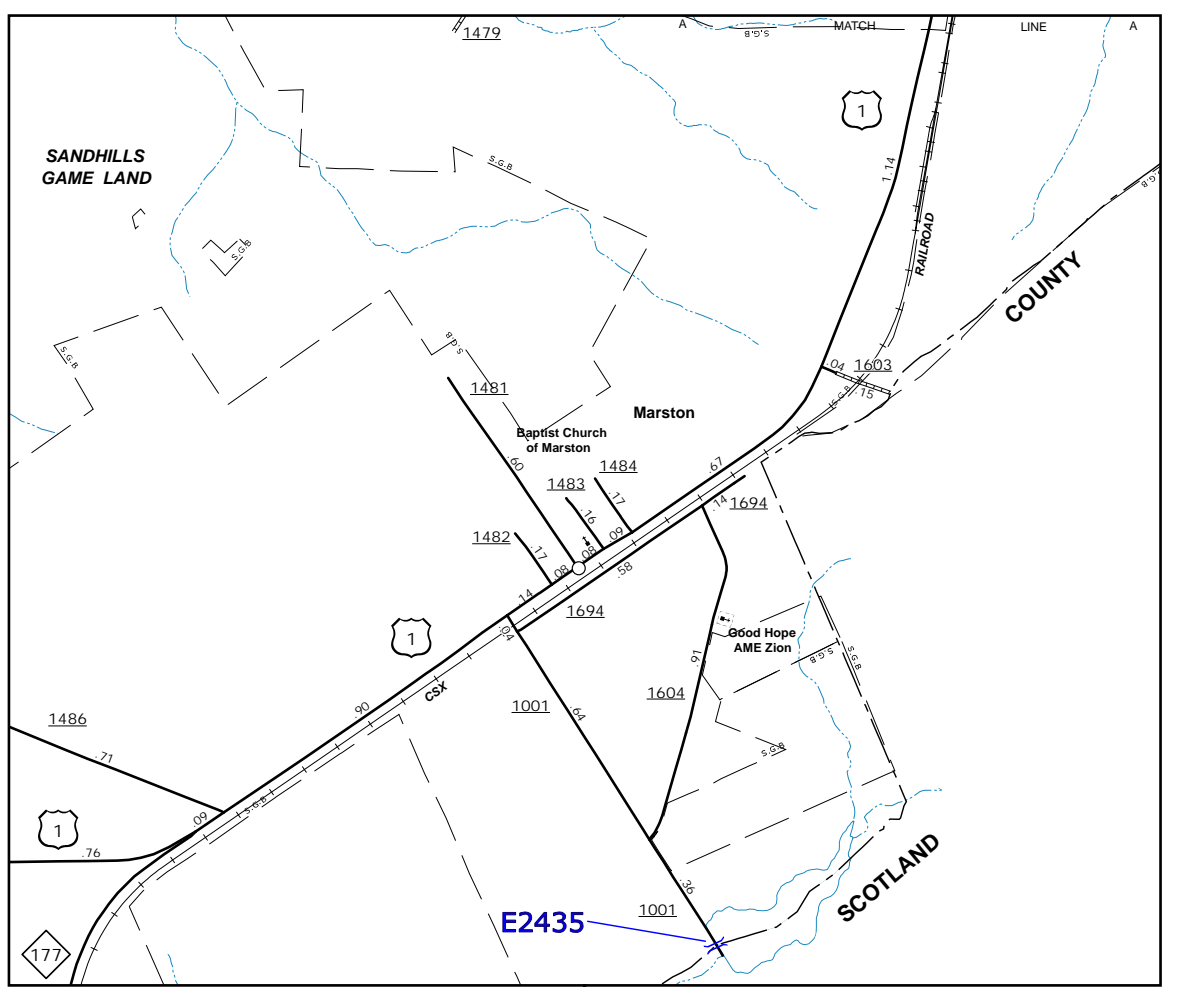


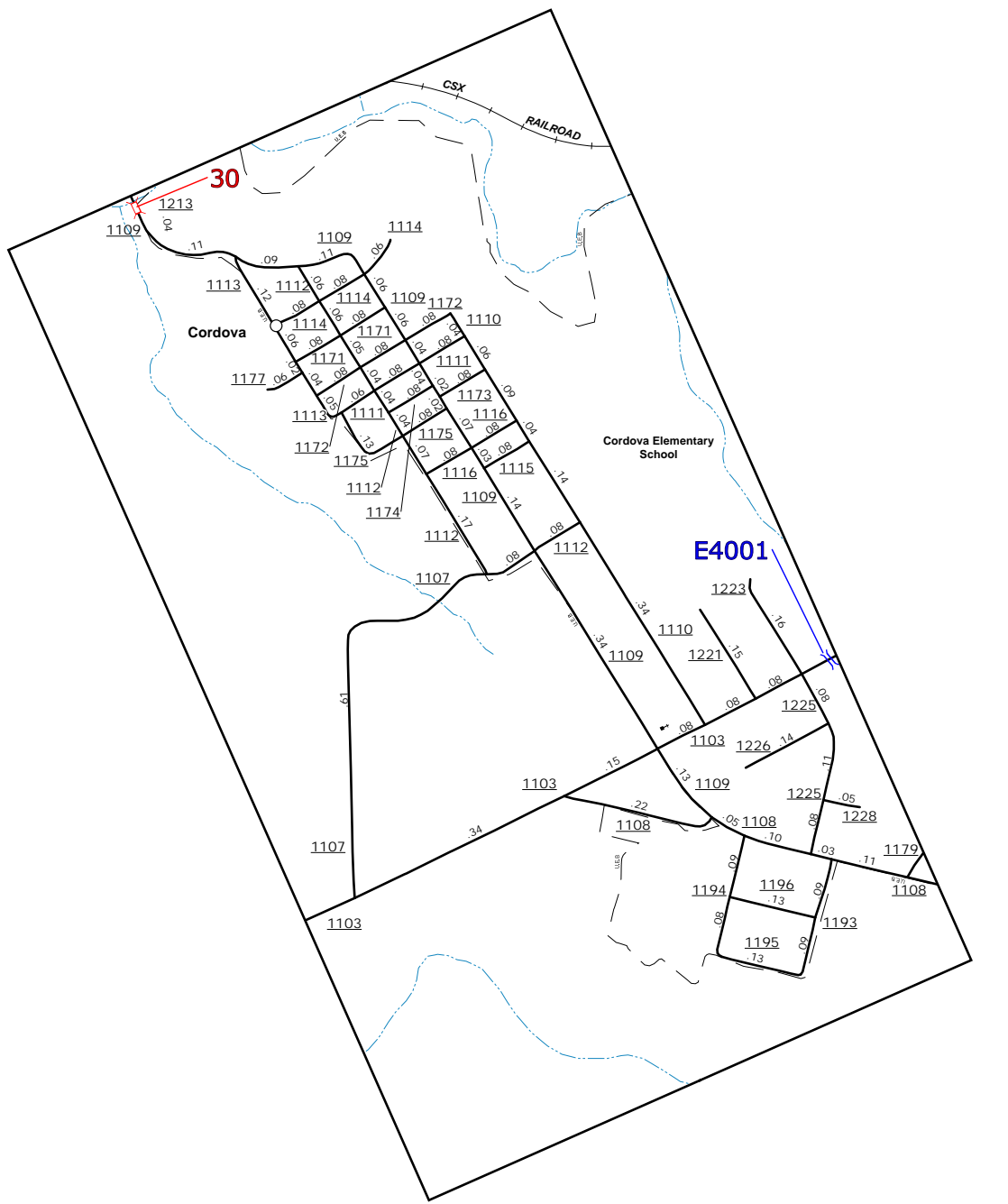
Ellerbe



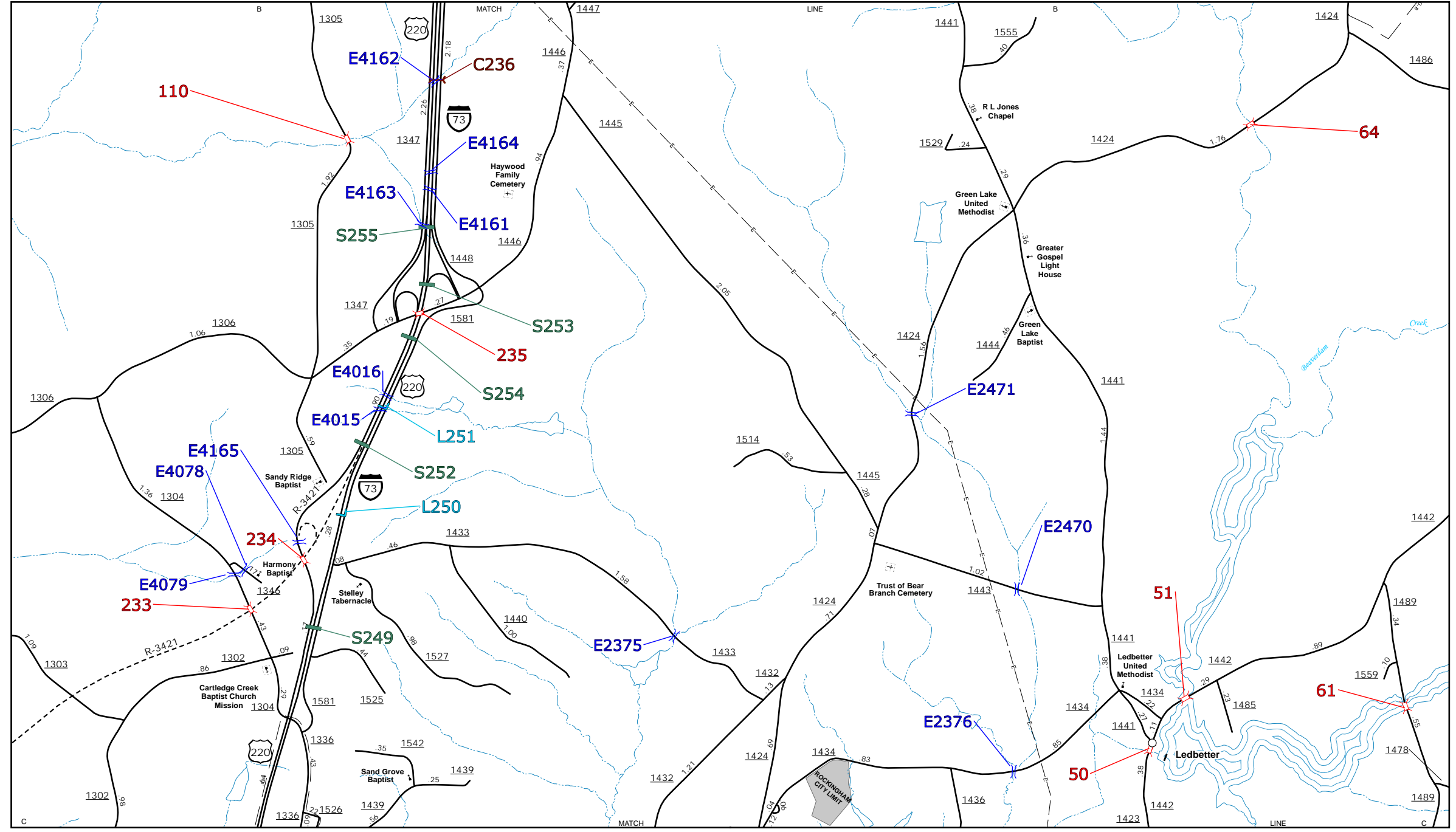
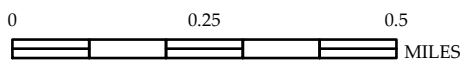
Hoffman



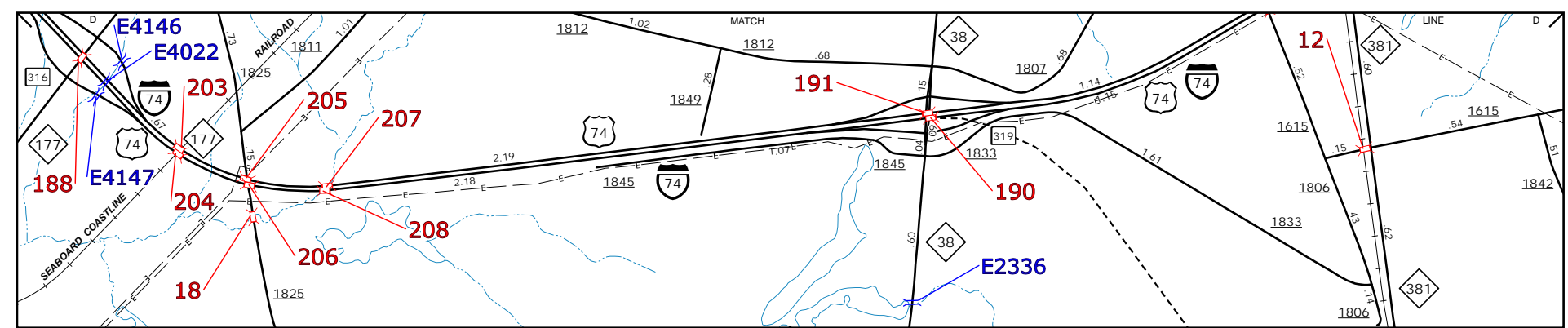
Marston



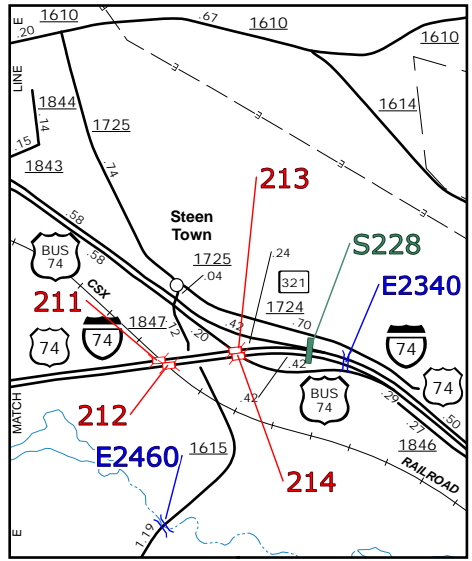
Cordova



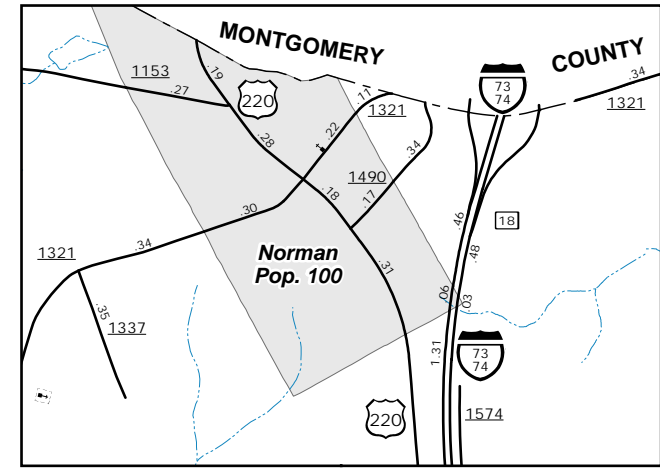
Ledbetter and Vicinity



Southern Hamlet Area



I-74 Byp/Bus



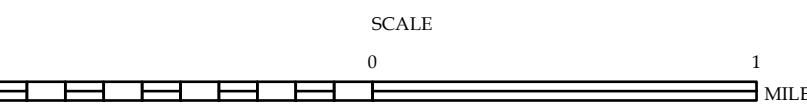
Norman

- BRIDGE
- CITY BRIDGE
- CITY SIGN
- CITY CULVERT
- CULVERT
- DRAW BRIDGE
- PEDESTRIAN BRIDGE
- NON-NBIS PIPE
- FERRY RAMP
- FEDERAL BRIDGE
- NON-SYSTEM MAINT BY NCDOT
- CANTILEVER SIGN
- PRIVATE STRUCTURE
- NCDOT OVERPASS STRUCTURE
- PAVEMENT ON PILES
- CITY PIPE
- PIPE
- RAILROAD BRIDGE
- OVERHEAD SIGN
- TUNNEL
- PEDESTRIAN UNDERPASS
- VEHICULAR UNDERPASS
- PEDESTRIAN WALKWAY
- T-POLE SIGN



ENLARGED MUNICIPAL AND SUBURBAN AREAS
RICHMOND COUNTY
NORTH CAROLINA
BRIDGE LOCATION MAP

PREPARED BY THE
 NORTH CAROLINA DEPARTMENT OF TRANSPORTATION
 OPERATIONS PROGRAM MANAGEMENT UNIT - MAPPING SECTION
 IN COOPERATION WITH THE
 U.S. DEPARTMENT OF TRANSPORTATION
 FEDERAL HIGHWAY ADMINISTRATION



10,000 FOOT GRID BASED ON NORTH CAROLINA PLANE COORDINATE SYSTEM
 LAMBERT CONFORMAL CONIC PROJECTION

COPIES OF THIS MAP ARE AVAILABLE AT THE PUBLIC INFORMATION CENTER, ADDRESS: N.C. DEPARTMENT OF TRANSPORTATION, 4809 BERNLIND COURT, RALEIGH, NC 27606

The Mapping Section's goal is to provide the most accurate and current information possible. Map data is compiled from various sources and is subject to change. The accuracy of the data is not guaranteed. For additional information, visit the Mapping Section website at <http://www.ncdot.gov/transportation/mapping> and click on Data Providers or contact us by phone at (919) 855-8400.