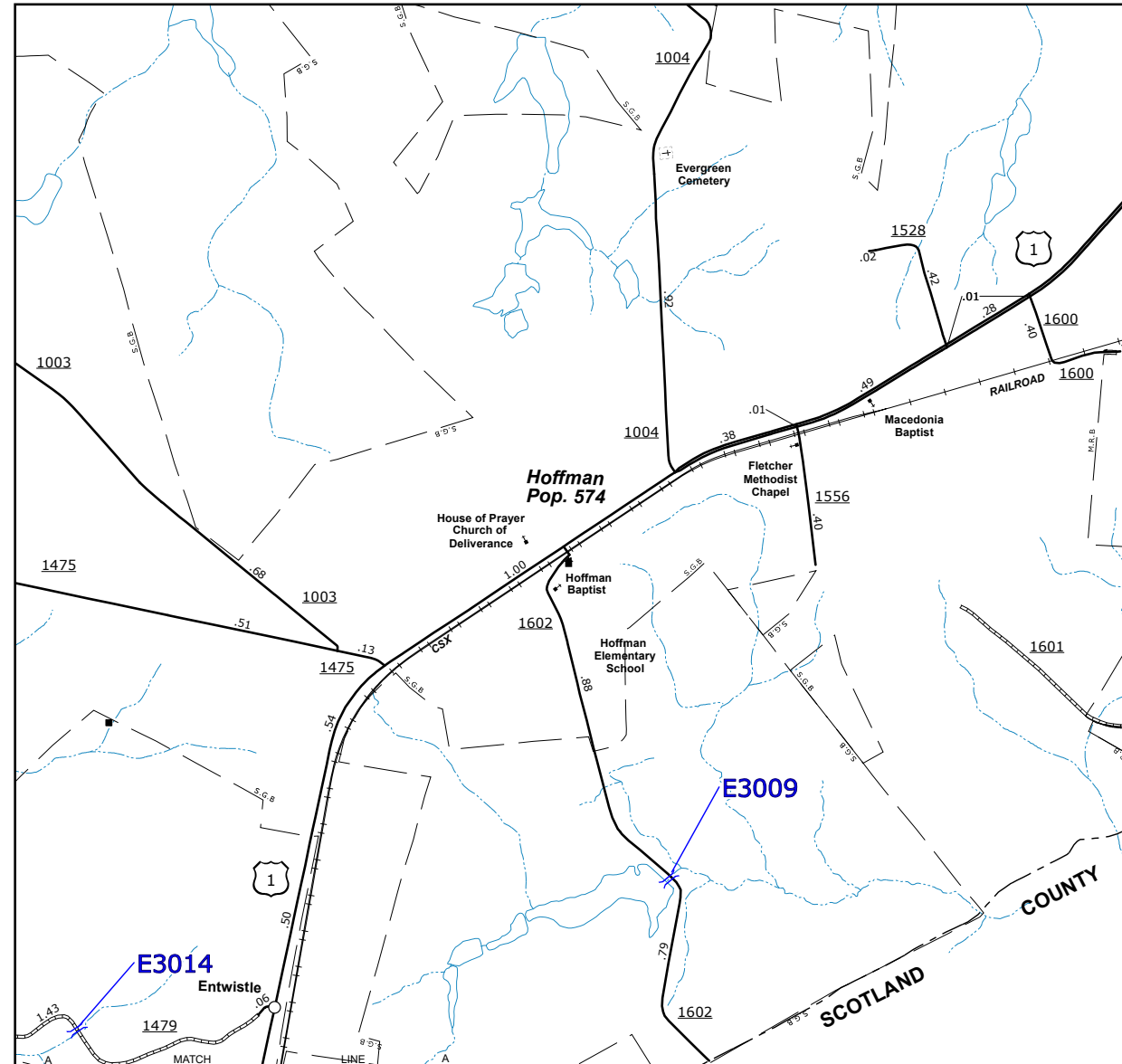
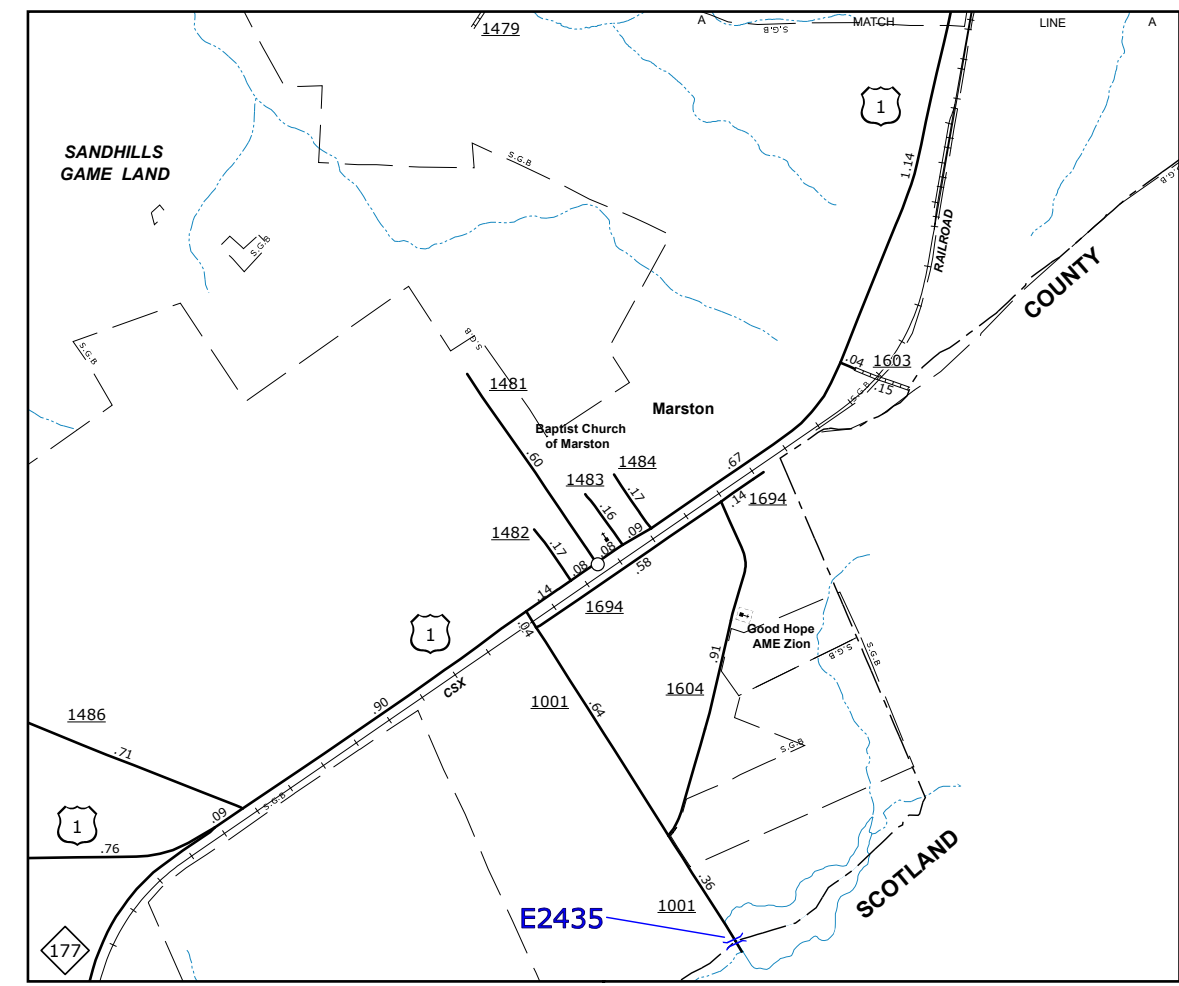


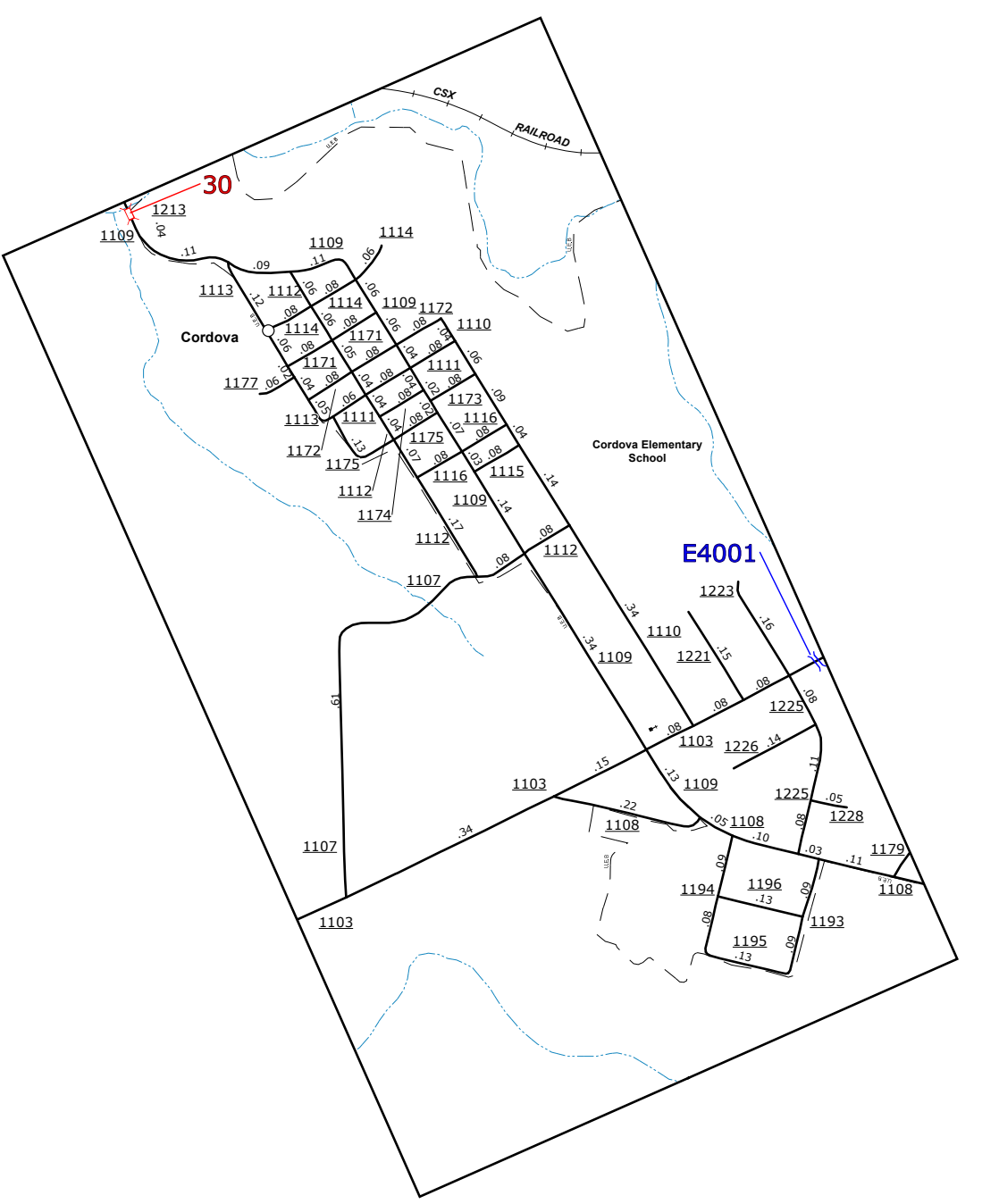
Ellerbe



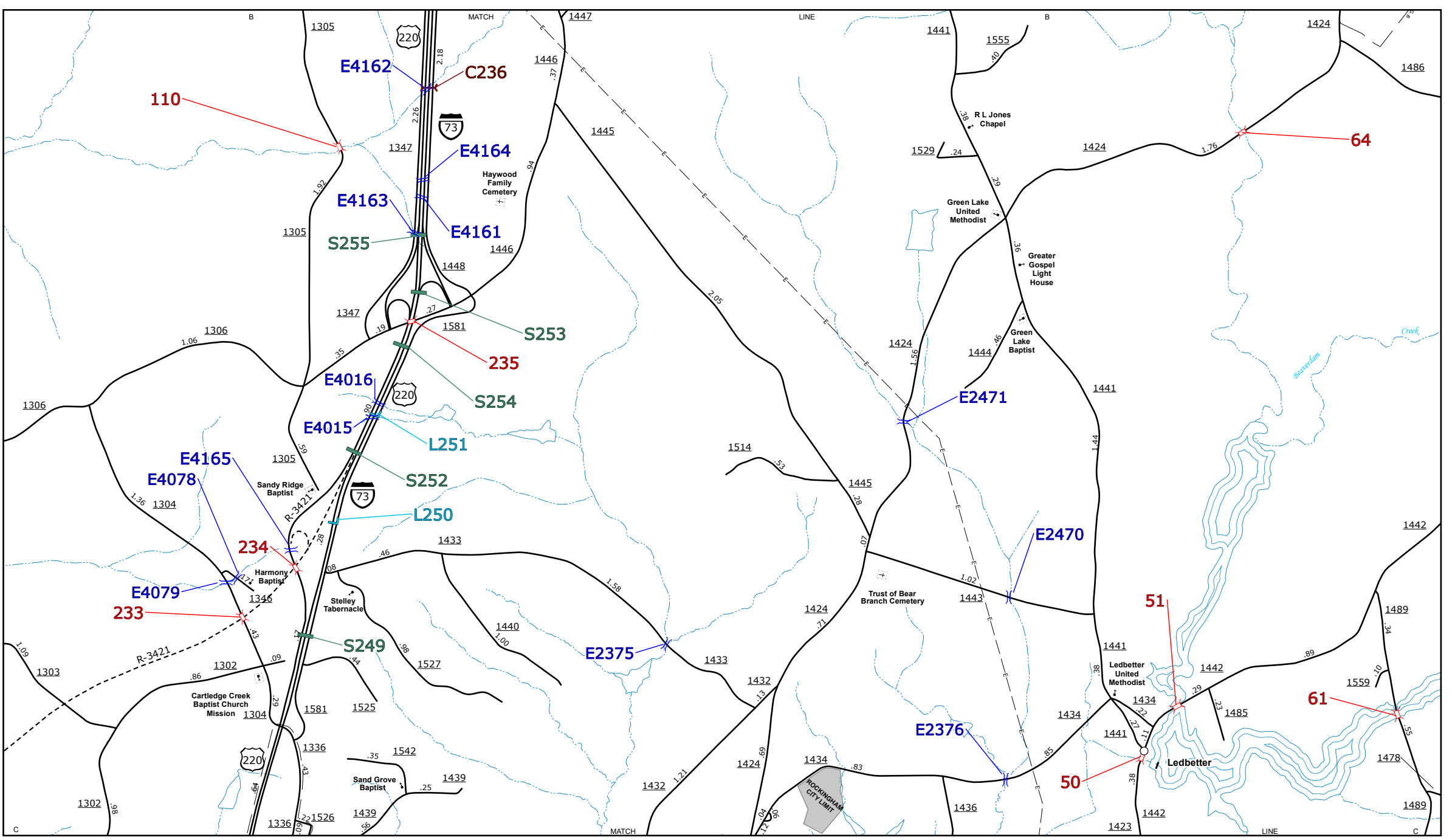
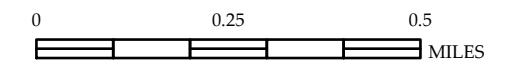
Hoffman



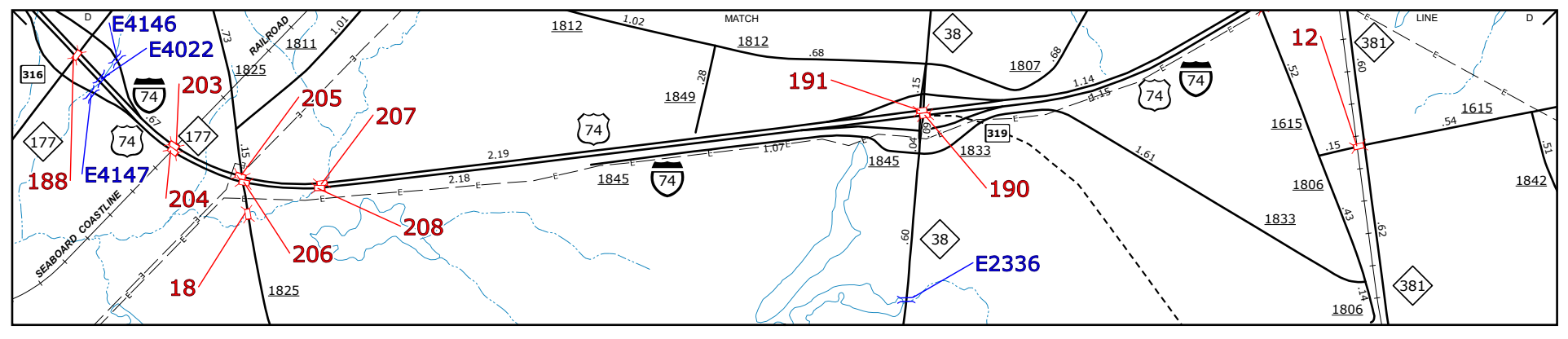
Marston



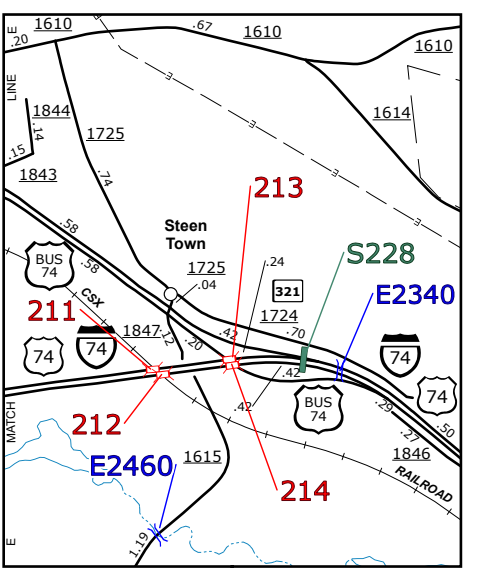
Cordova



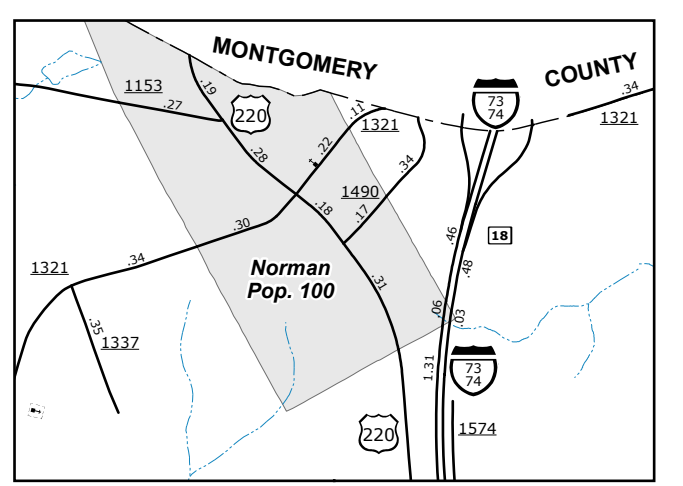
Ledbetter and Vicinity



Southern Hamlet Area



I-74 Byp/Bus



Norman

- BRIDGE
- CITY BRIDGE
- CITY SIGN
- CITY CULVERT
- CULVERT
- DRAW BRIDGE
- PEDESTRIAN BRIDGE
- NON-NBHS PIPE
- FERRY RAMPI
- FEDERAL BRIDGE
- NON-SYSTEM MAINT BY NCDOT
- CANTILEVER SIGN
- PRIVATE STRUCTURE
- NCDOT OVERPASS STRUCTURE
- PAVEMENT ON PILES
- CITY PIPE
- PIPE
- RAILROAD BRIDGE
- OVERHEAD SIGN
- TUNNEL
- PEDESTRIAN UNDERPASS
- VEHICULAR UNDERPASS
- PEDESTRIAN WALKWAY
- T-POLE SIGN

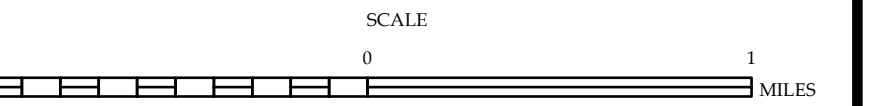
ENLARGED MUNICIPAL AND SUBURBAN AREAS

RICHMOND COUNTY

NORTH CAROLINA

BRIDGE LOCATION MAP

PREPARED BY THE
 NORTH CAROLINA DEPARTMENT OF TRANSPORTATION
 OPERATIONS PROGRAM MANAGEMENT UNIT - MAPPING SECTION
 IN COOPERATION WITH THE
 U.S. DEPARTMENT OF TRANSPORTATION
 FEDERAL HIGHWAY ADMINISTRATION



10,000 FOOT GRID BASED ON NORTH CAROLINA PLANE COORDINATE SYSTEM
 LAMBERT CONFORMAL CONIC PROJECTION

COPIES OF THIS MAP ARE AVAILABLE AT THE PUBLIC WORKS DEPARTMENT, 400 BERNALDO AVENUE, RICHMOND, NC 28840. FOR ADDITIONAL INFORMATION, VISIT OUR WEBSITE AT WWW.RICHMONDNC.GOV.

THE MAPPING SECTION'S GOAL IS TO PROVIDE THE MOST ACCURATE AND CURRENT INFORMATION POSSIBLE. MAP DATA IS COMPILED FROM AERIAL PHOTOGRAPHS AND FIELD SURVEYS. THE ACCURACY OF THE DATA IS GUARANTEED. THE MAPPING SECTION IS NOT RESPONSIBLE FOR ANY DAMAGE OR LOSS OF PROPERTY RESULTING FROM THE USE OF THIS MAP.