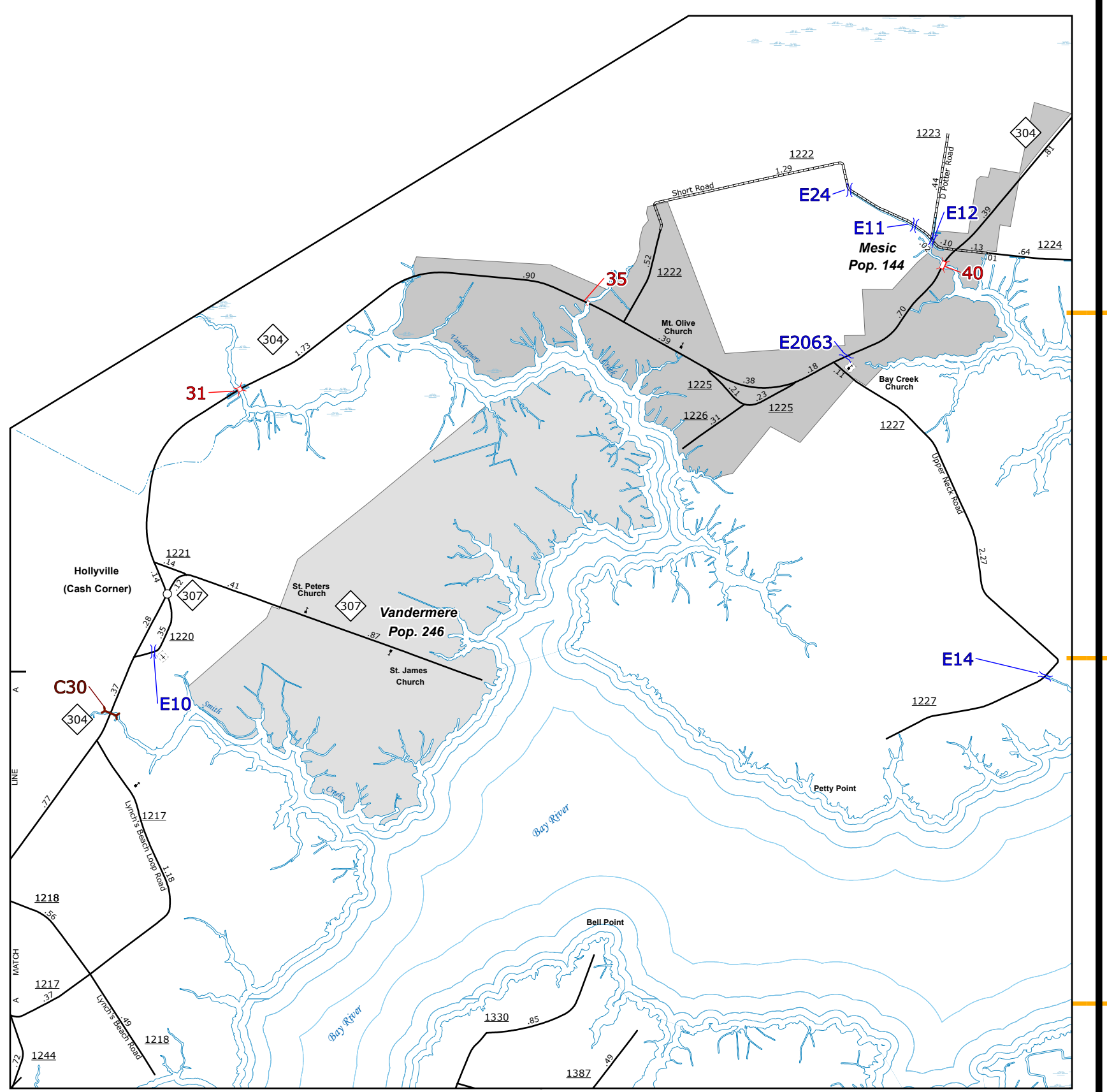
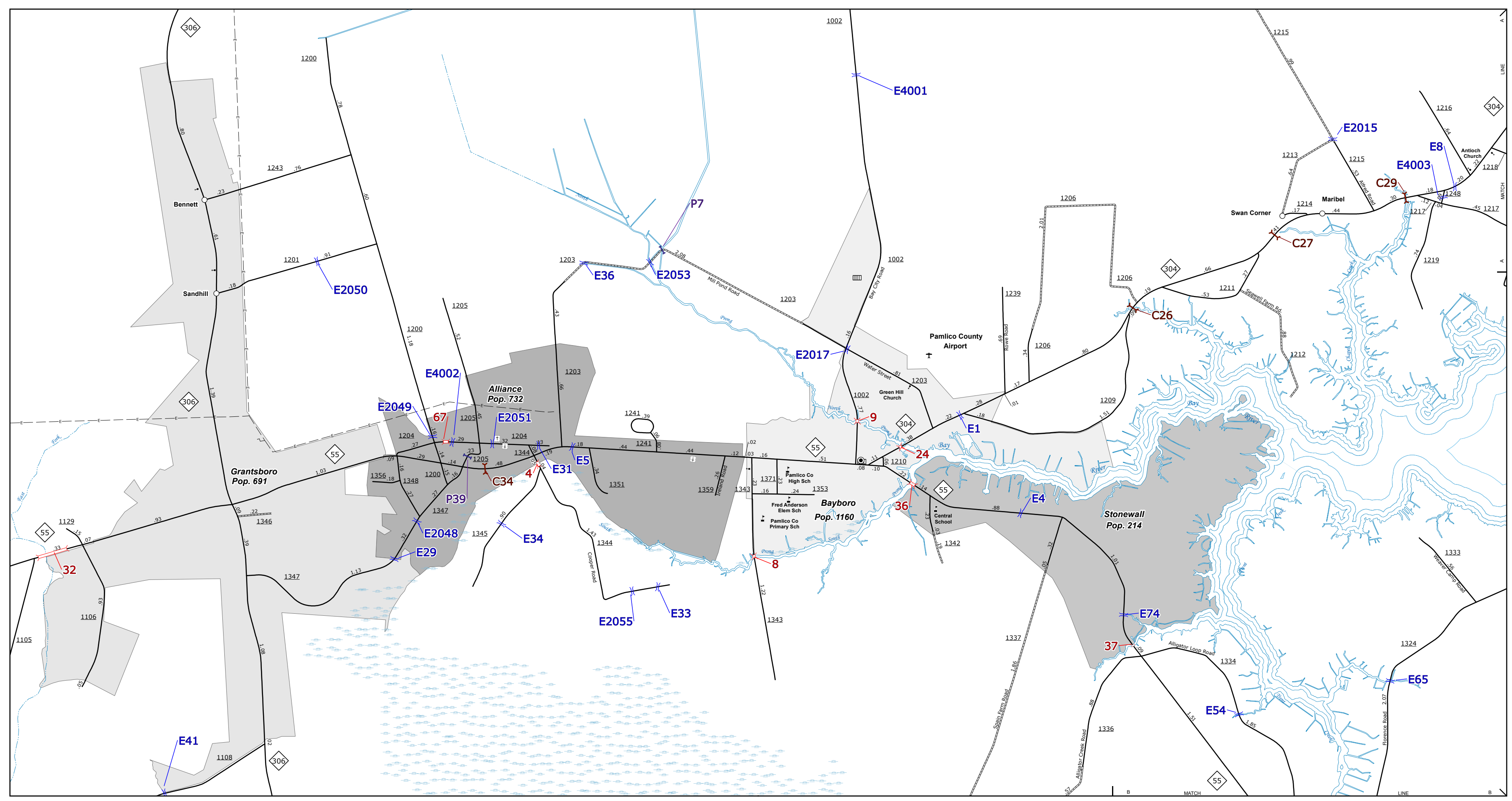
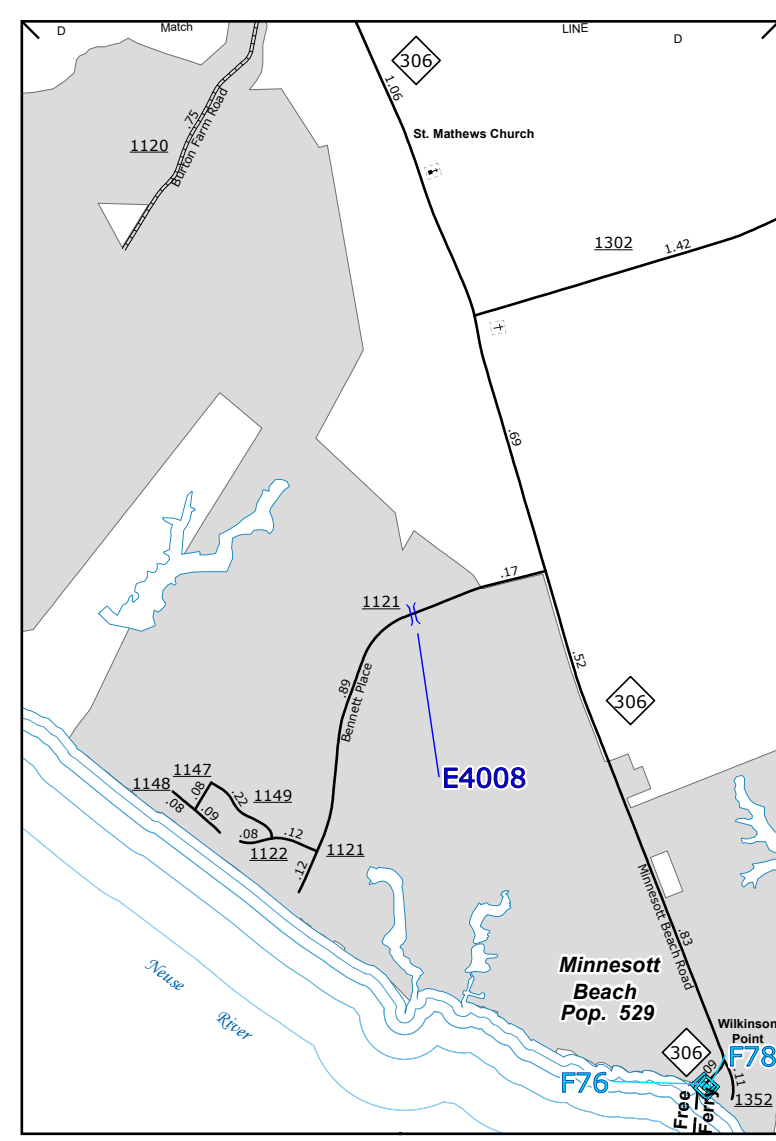


The Mapping Section's goal is to provide the most accurate and current information possible. Map data is compiled from various sources and is subject to change. The accuracy of the data is dependent on the quality of the source data. The Mapping Section is not responsible for errors or for any consequences arising from the use of the information contained herein. For more information, please visit our website at www.ncdot.gov/transportation/mapping and click on Data Providers or contact us by phone at (919) 855-8480.

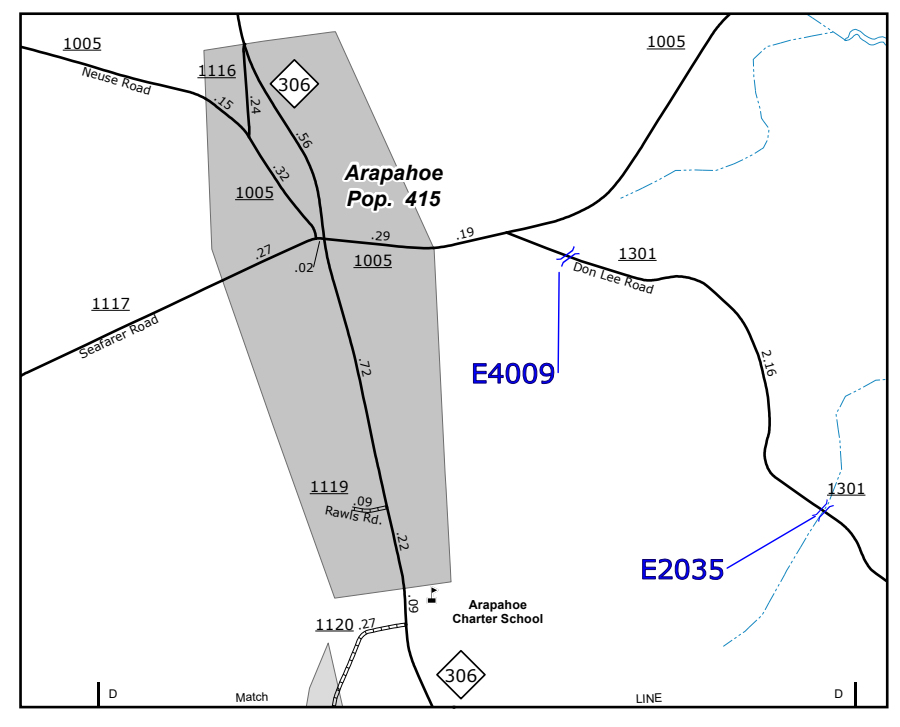
COPIES OF THIS MAP ARE AVAILABLE TO THE PUBLIC AT NOMINAL COST. ADDRESS: N.C. DEPARTMENT OF TRANSPORTATION, 6899 BERNIE RD, RALEIGH, NC 27608



Vandermere

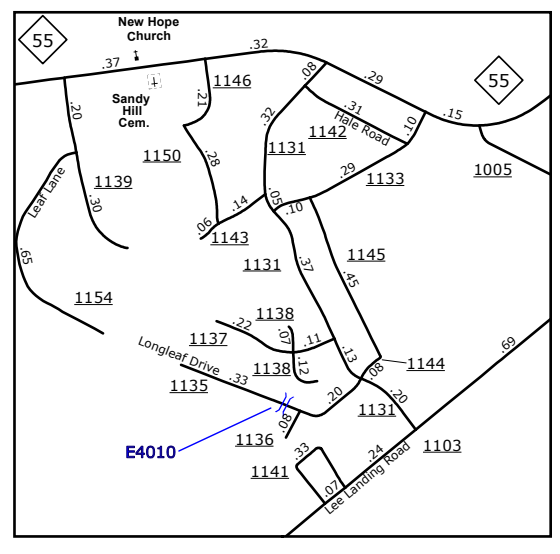


Minnesott Beach



Arapahoe

Bayboro



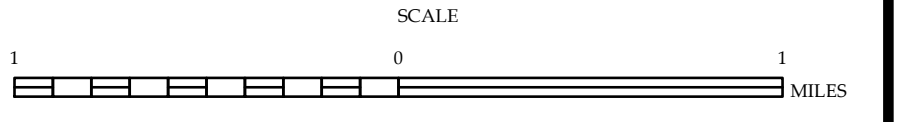
Sand Hill Cemetery

- BRIDGE
- CITY BRIDGE
- CITY SIGN
- CITY CULVERT
- CULVERT
- DRAW BRIDGE
- D PEDESTRIAN BRIDGE
- E NON-NBIS PIPE
- FERRY RAMP
- G FEDERAL BRIDGE
- H NON-SYSTEM MAINT BY NCDOT
- L CANTILEVER SIGN
- M PRIVATE STRUCTURE
- N NCDOT OVERPASS STRUCTURE
- P PAVEMENT ON PILES
- T CITY PIPE
- R RAILROAD BRIDGE
- S OVERHEAD SIGN
- T TUNNEL
- U PEDESTRIAN UNDERPASS
- V VEHICULAR UNDERPASS
- W PEDESTRIAN WALKWAY
- Y POLE SIGN



ENLARGED MUNICIPAL AND SUBURBAN AREAS
PAMLICO COUNTY
 NORTH CAROLINA
BRIDGE LOCATION MAP

PREPARED BY THE
 NORTH CAROLINA DEPARTMENT OF TRANSPORTATION
 OPERATIONS PROGRAM MANAGEMENT UNIT - MAPPING SECTION
 IN COOPERATION WITH THE
 U.S. DEPARTMENT OF TRANSPORTATION
 FEDERAL HIGHWAY ADMINISTRATION



10,000 FOOT GRID BASED ON NORTH CAROLINA PLANE COORDINATE SYSTEM
 LAMBERT CONFORMAL CONIC PROJECTION