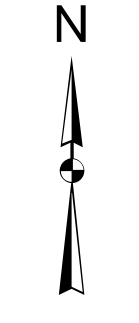


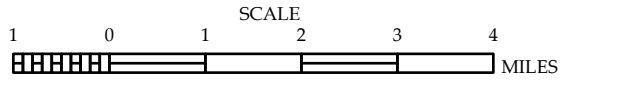
LEGEND

- INTERSTATE HIGHWAY
- STATE HIGHWAY
- UNPAVED SURFACE ROAD
- ROAD UNDER CONSTRUCTION
- PROVISIONALLY DRAWN ROAD
- PROJECTED ROAD
- INTERSECTION DISTANCE
- UTILITY LINE
- RAILROAD LINE
- INSET AREA
- STATE LINE
- COUNTY LINE
- CITY LIMITS
- CITY ROUTE AND SHIP
- NATIONAL FOREST OR WETLAND
- WATER BODY OR CREEK
- RESERVE POINT OR LAKE W/ ISLAND
- DAM OR DAM WITH LOCK
- WATERFALL
- SWAMP
- COUNTY SEAT
- SCHOOL
- COLLEGE OR UNIVERSITY
- HOSPITAL
- COAST GUARD STATION
- CHURCH
- CHURCH WITH CEMETERY
- CEMETERY
- PARK STATION
- CONFECTION OR PENAL INSTITUTION
- SQUARE
- MINE OR PIT
- HIGHWAY DIV. OR DIST. OFFICE
- MILITARY POST
- WEIGH STATION
- FARMHOUSE
- HISTORICAL SITE
- POINTS OF INTEREST
- POST OFFICE
- STATE FOREST
- LANDMARK
- MOUNTAIN SUMMIT
- BROWNING GAP
- OVERLOOK
- REST AREA
- VISITOR CENTER AREA
- WELCOME CENTER AREA
- AIRPORT
- MILITARY AIRPORT
- NATIONAL STATE FOREST BOUNDARY
- WILDLIFE REFUGE
- SCHOOL
- NATIONAL STATE PARK BOUNDARY
- GAME LAND BOUNDARY
- MILITARY RESERVATION BOUNDARY
- INDIAN RESERVATION BOUNDARY
- BRIDGE
- CITY BRIDGE
- CITY SIGN
- CITY CULTURE
- CULTURE
- DRINKING FOUNTAIN
- PEDESTRIAN BRIDGE
- NON-DRINKING FOUNTAIN
- FEDERAL BRIDGE
- NON-FEDERAL BRIDGE BY NCDOT
- CANTILEVER SIGN
- PRIVATE STRUCTURE
- NON-DRINKING FOUNTAIN
- PAVEMENT ON PILES
- CITY PIPE
- PIPE
- OVERHEAD BRIDGE
- OVERHEAD SIGN
- TUNNEL
- PEDESTRIAN UNDERPASS
- VEHICULAR UNDERPASS
- PEDESTRIAN WALKWAY
- PRIVATE BRIDGE

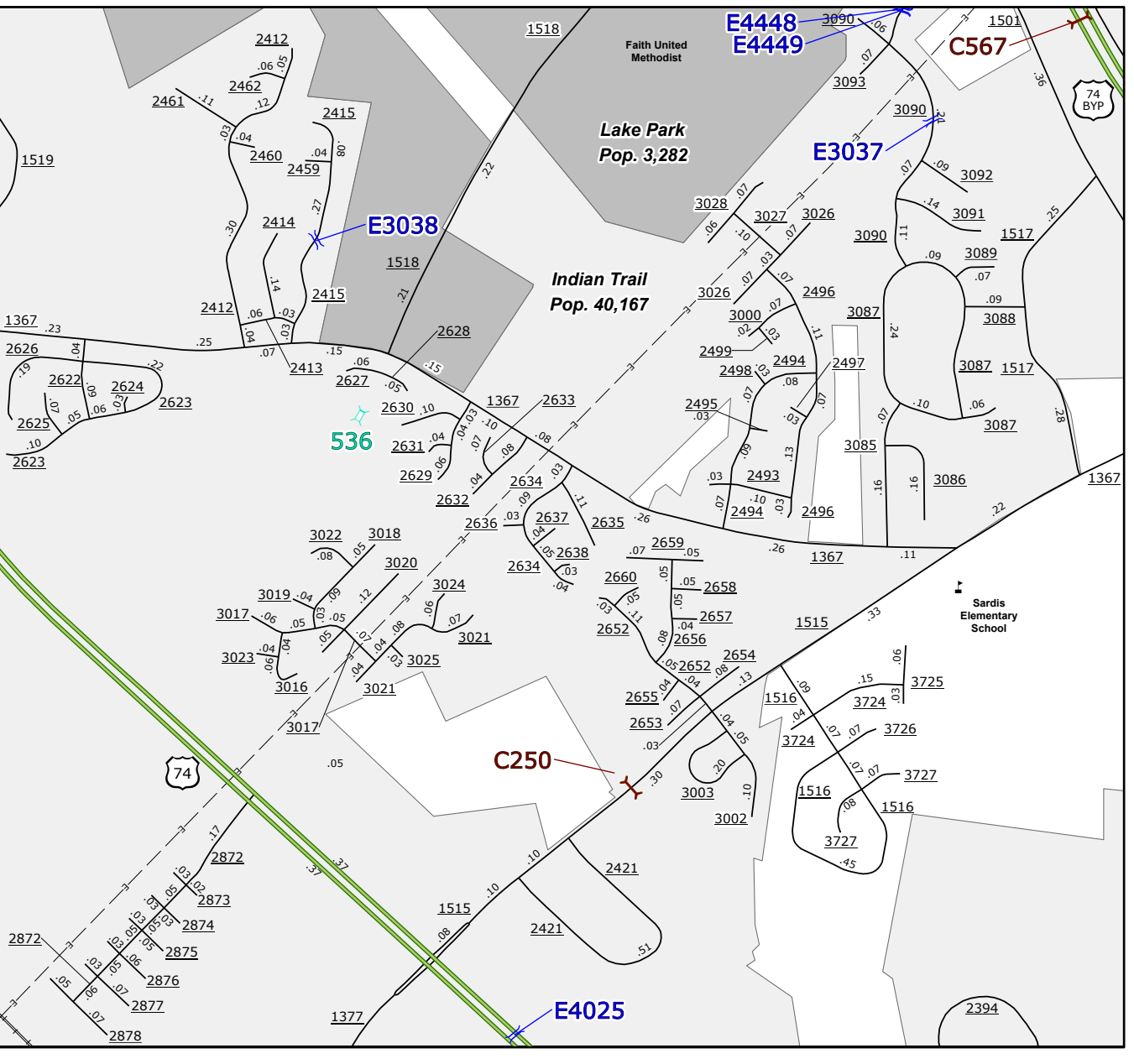
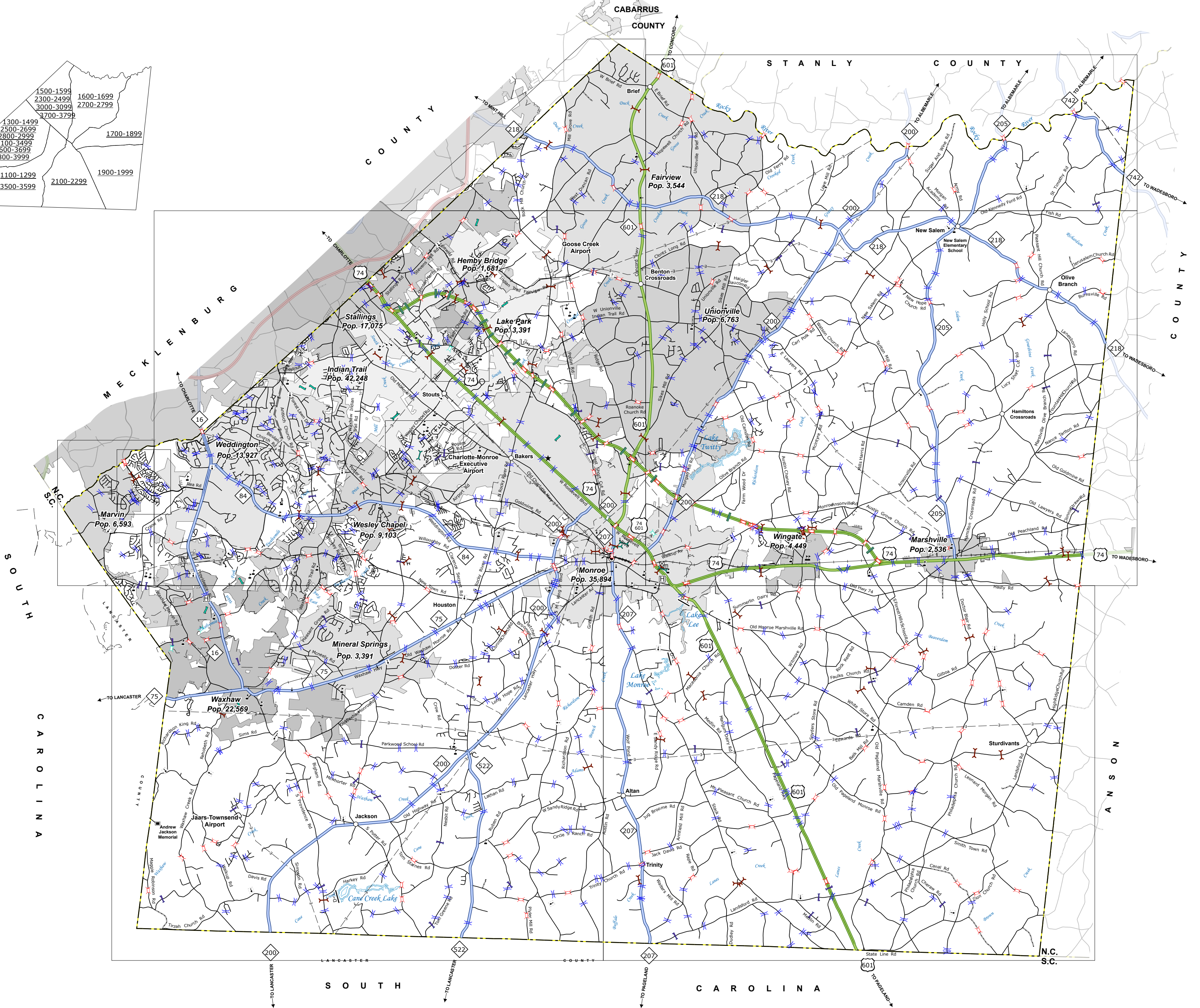
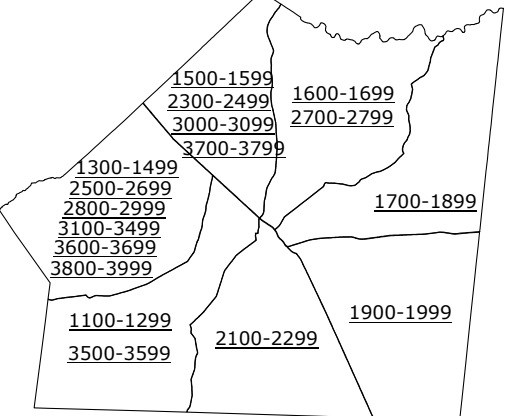


UNION COUNTY NORTH CAROLINA BRIDGE LOCATION MAP

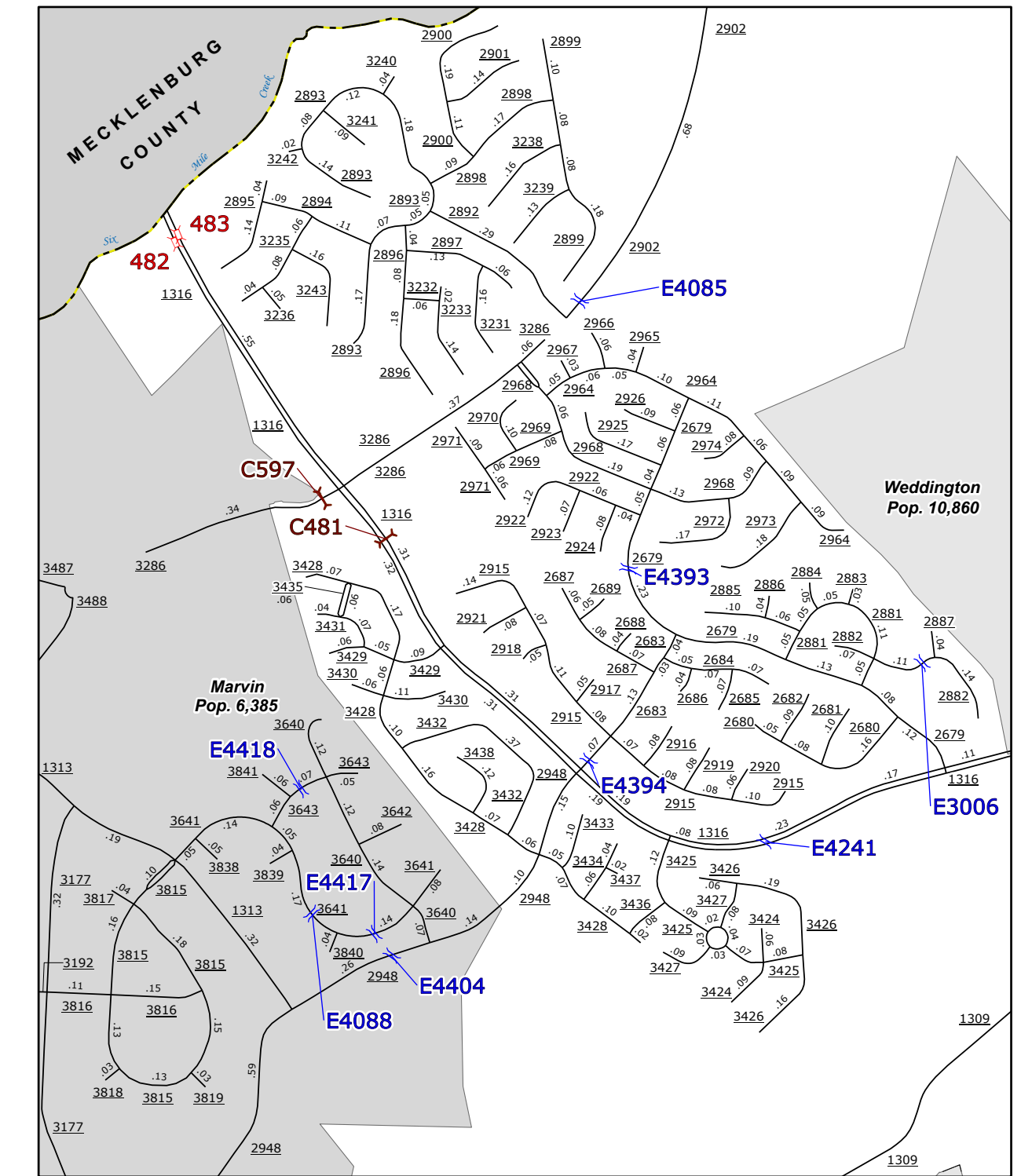
PREPARED BY THE
NORTH CAROLINA DEPARTMENT OF TRANSPORTATION
OPERATIONS PROGRAM MANAGEMENT UNIT - MAPPING SECTION
IN COOPERATION WITH THE
U.S. DEPARTMENT OF TRANSPORTATION
FEDERAL HIGHWAY ADMINISTRATION



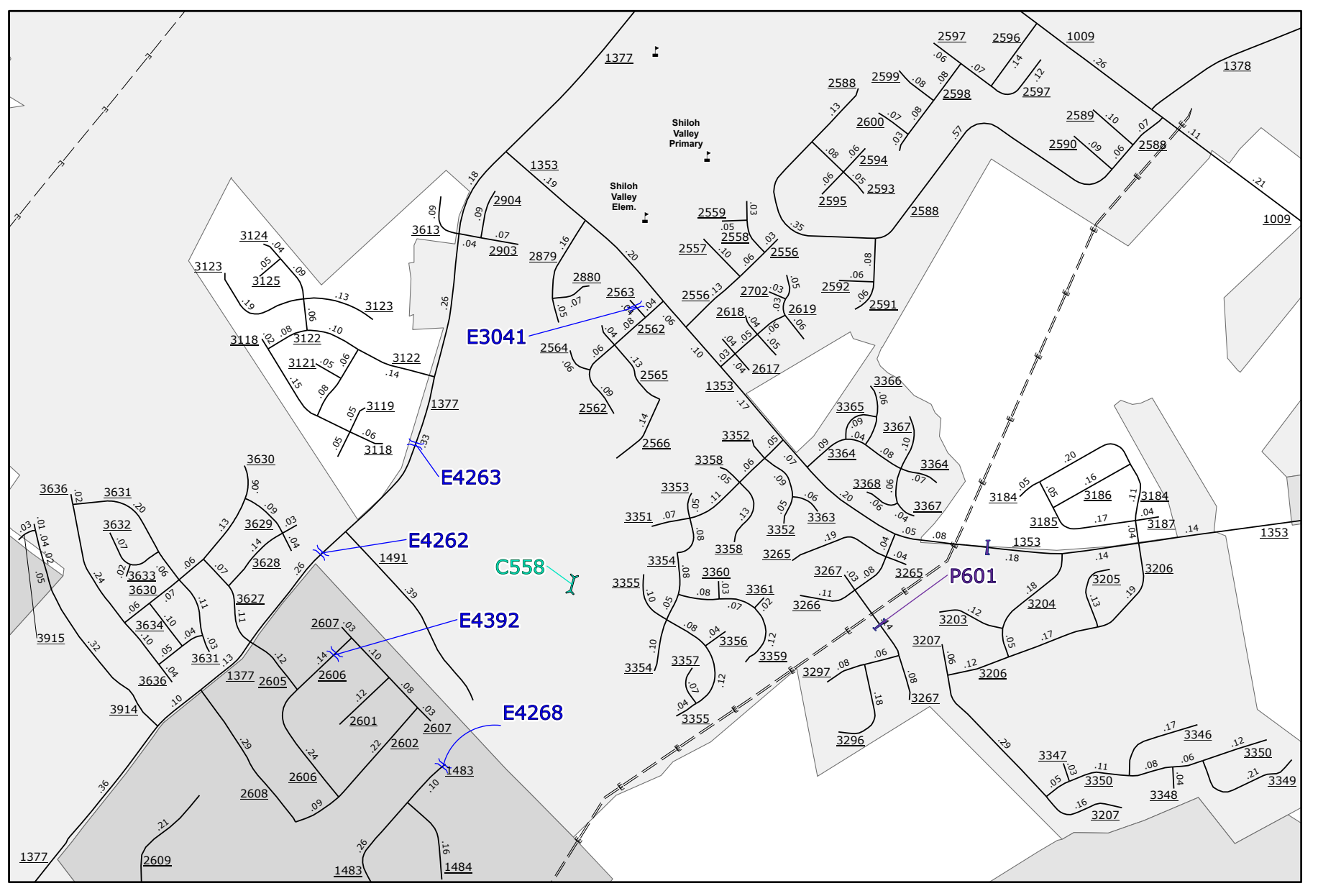
NORTH CAROLINA PLANE COORDINATE SYSTEM
LAMBERT CONFORMAL CONIC PROJECTION



Sardis



Hunter Oaks



Rogers Road



A
B
C
D
E
F
G
H

A
B
C
D
E
F
G
H

COPIES OF THIS MAP ARE AVAILABLE TO THE PUBLIC AT NOMINAL COST. CONTACT US TO ORDER: maps.unioncountync.gov
TERMS OF USE: The Mapping Section's goal is to provide the most accurate and current information possible. Map data is compiled from numerous sources with varying dates of acquisition and map accuracy standards. As a result, the accuracy, currency, and completeness of the data provided will vary. The North Carolina Department of Transportation shall not be held liable for any errors in the map data. This map cannot be construed to be a legal document. The information shown on this map was last updated in July 2024. For digital copies of this map or additional map products, visit <https://connect.ncdot.gov/resources/State-Mapping>.