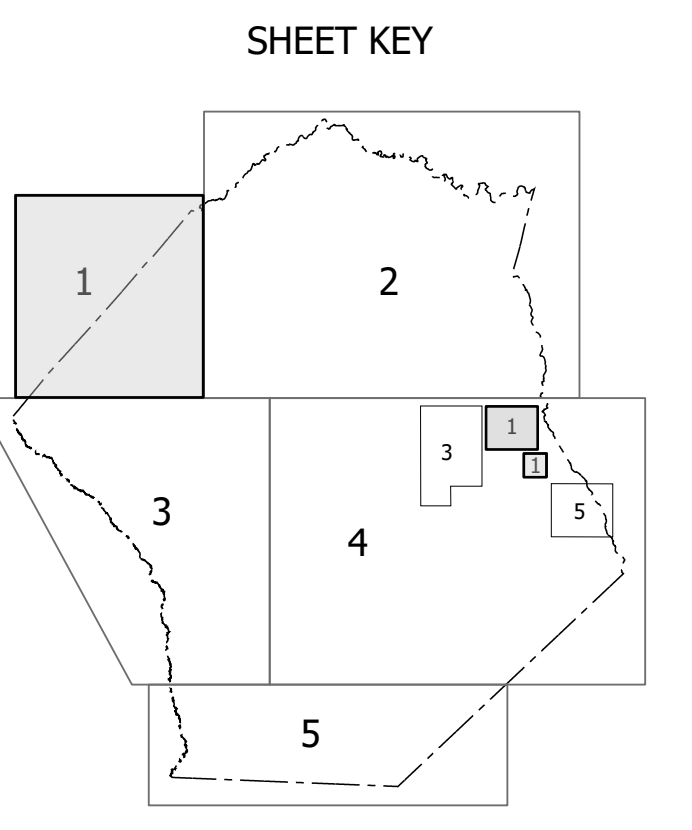
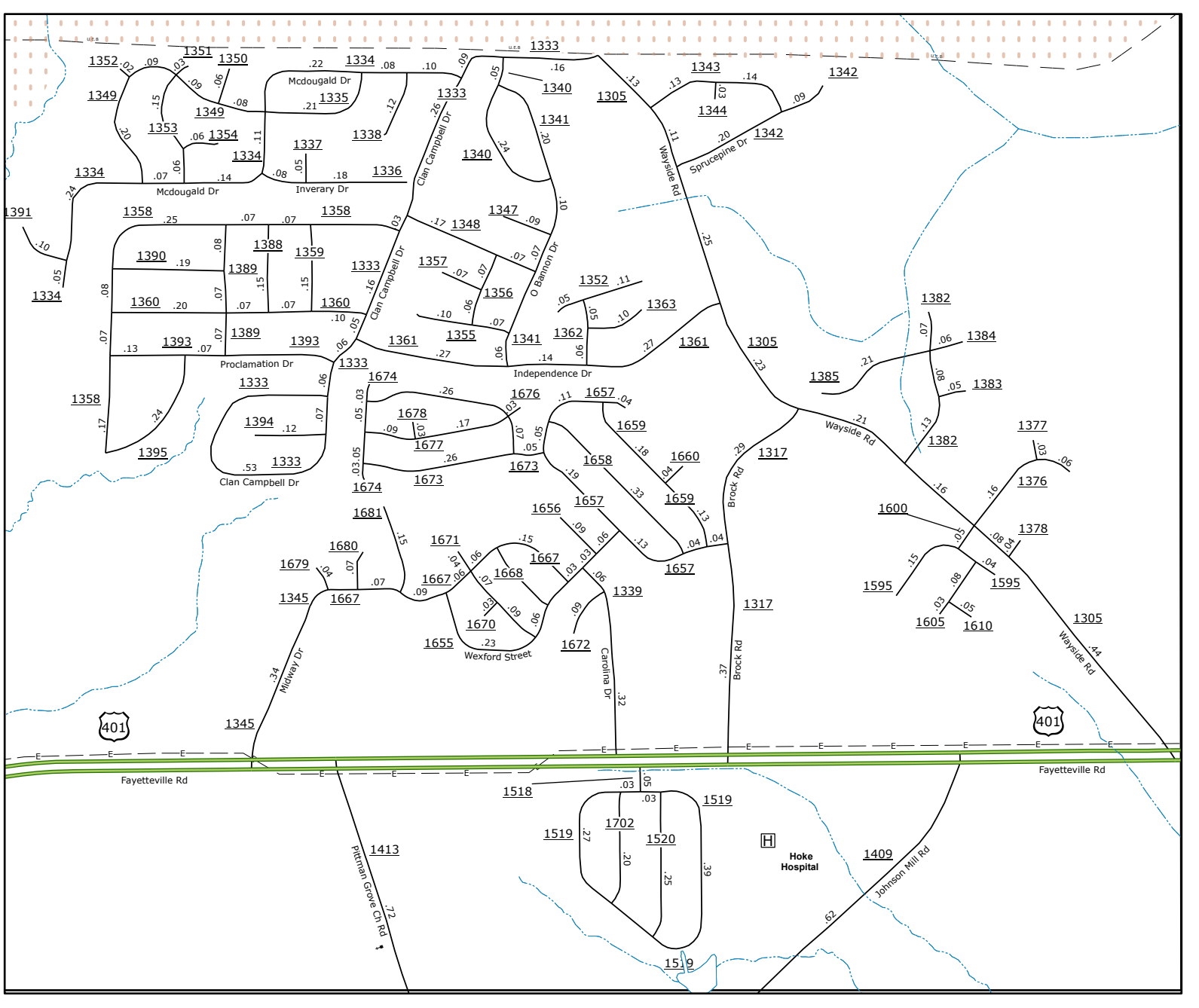
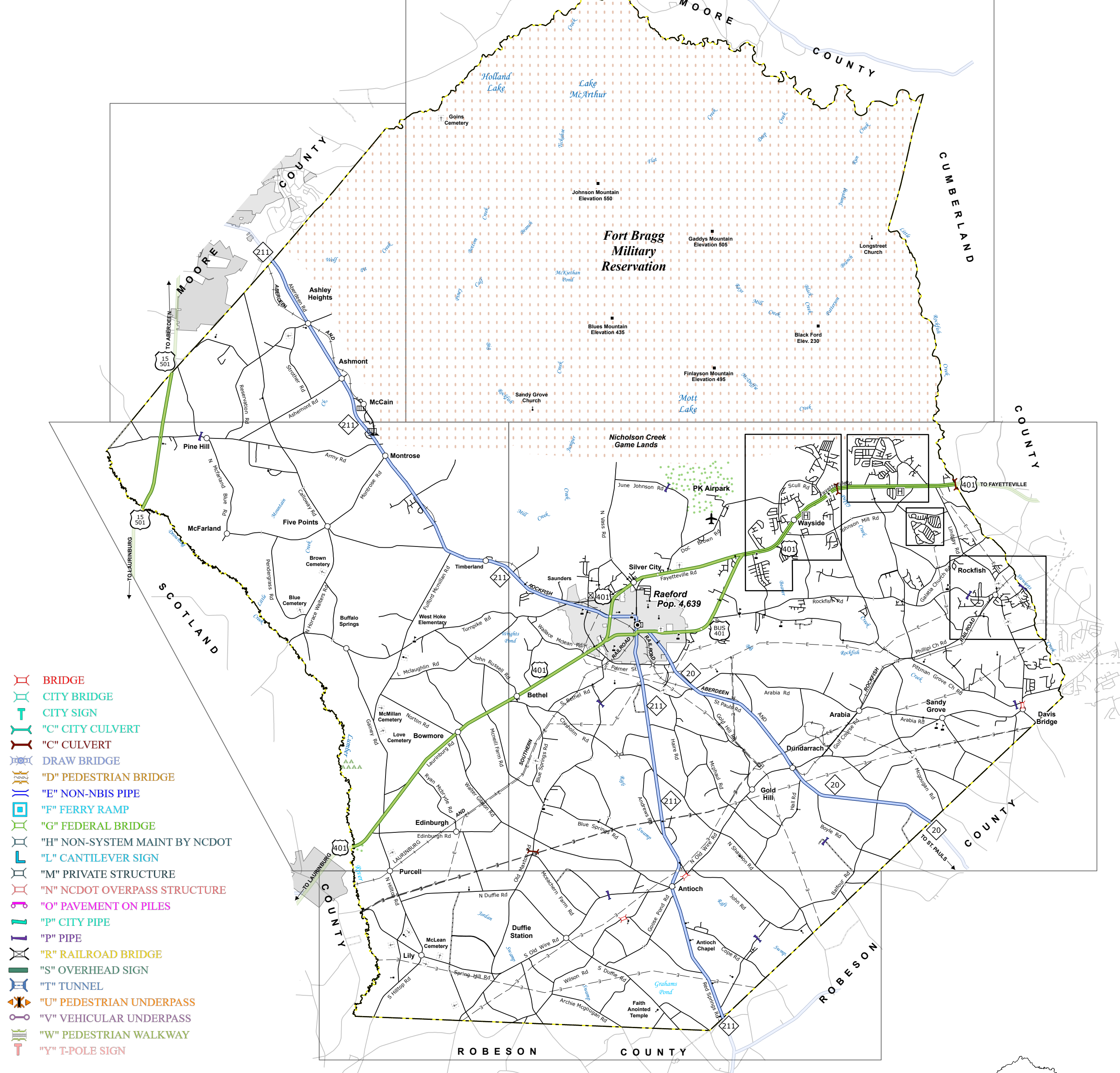
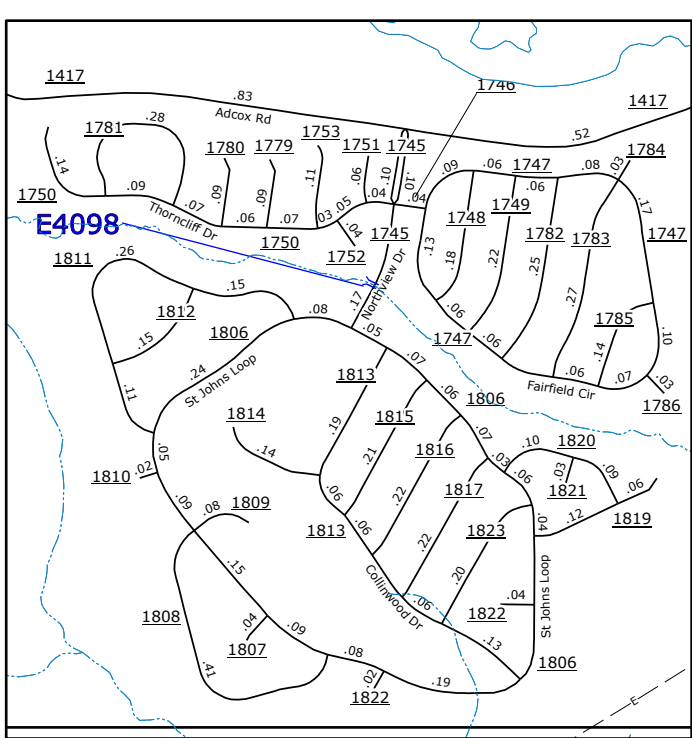
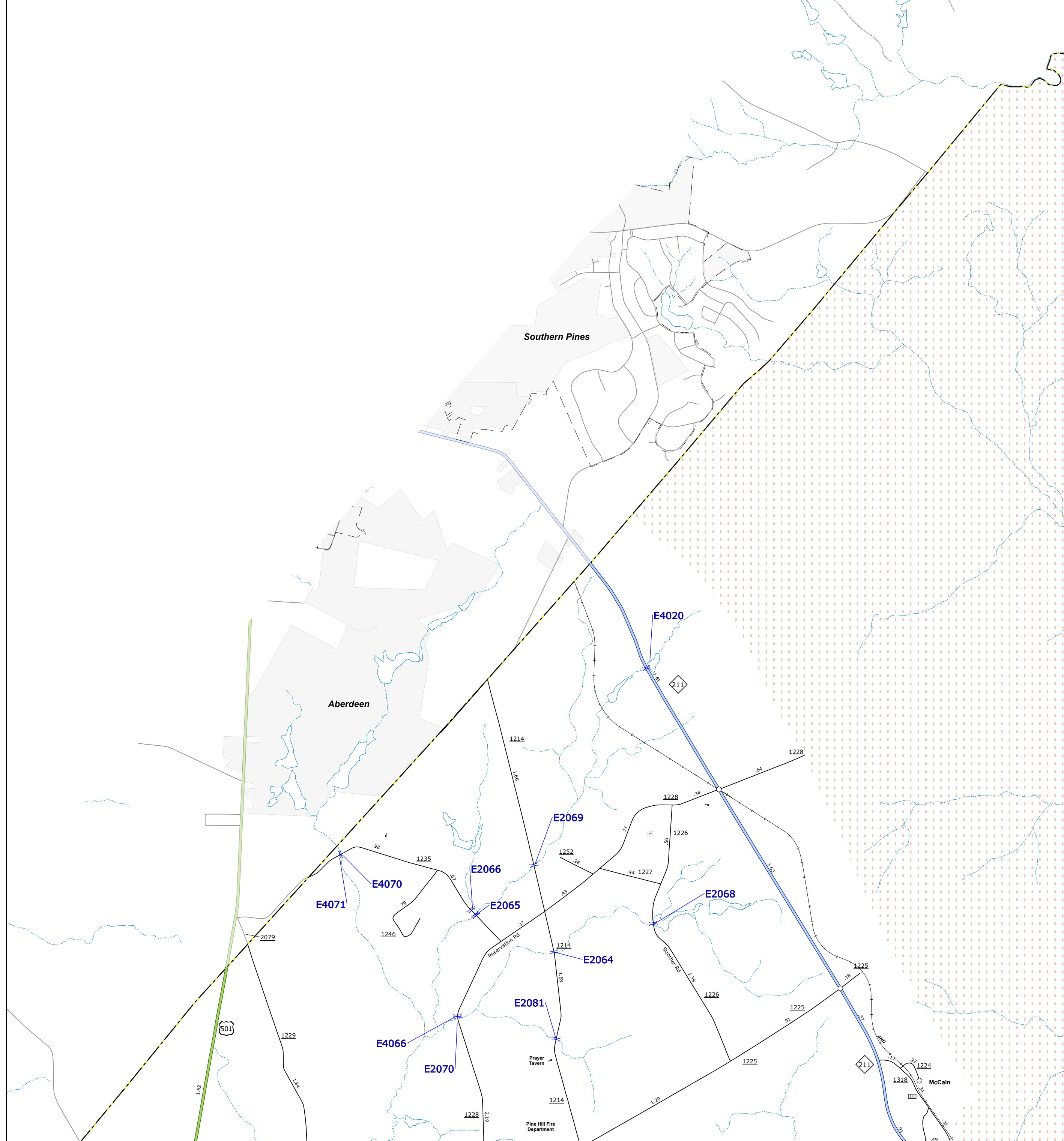
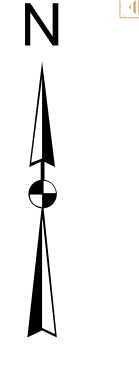


THIS MAP IS THE PROPERTY OF THE NORTH CAROLINA DEPARTMENT OF TRANSPORTATION. IT IS TO BE USED FOR THE PURPOSES OF THE FEDERAL HIGHWAY ADMINISTRATION. THE STATE OF NORTH CAROLINA HAS THE SOLE RIGHT TO REPRODUCE THIS MAP. ANY REPRODUCTION OF THIS MAP WITHOUT THE WRITTEN PERMISSION OF THE NORTH CAROLINA DEPARTMENT OF TRANSPORTATION IS PROHIBITED. THE INFORMATION ON THIS MAP WAS OBTAINED FROM THE BEST AVAILABLE DATA AS OF 12/2024. THE STATE OF NORTH CAROLINA HAS THE SOLE RIGHT TO REPRODUCE THIS MAP. ANY REPRODUCTION OF THIS MAP WITHOUT THE WRITTEN PERMISSION OF THE NORTH CAROLINA DEPARTMENT OF TRANSPORTATION IS PROHIBITED. THE INFORMATION ON THIS MAP WAS OBTAINED FROM THE BEST AVAILABLE DATA AS OF 12/2024.

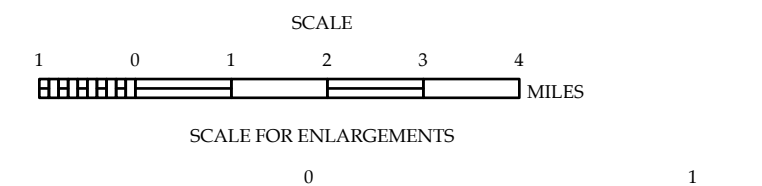


- LEGEND**
- INTERSTATE US NC Divided Hwy
  - INTERSTATE US NC Undivided Hwy
  - BLUE RIDGE PARKWAY
  - UNPAVED SURFACED ROAD
  - HARD SURFACED ROAD
  - NON-SYSTEM ROAD
  - PROVISIONALLY DRAWN ROAD
  - PROJECTED LOCATION
  - INTERSECTION DISTANCE
  - INTERSTATE HIGHWAY
  - U.S. NUMBERED HIGHWAY
  - N.C. NUMBERED HIGHWAY
  - U.S. NUMBERED BICYCLE ROUTE
  - N.C. NUMBERED BICYCLE ROUTE
  - INTERSTATE INTERCHANGE NUMBER
  - SECONDARY ROAD NUMBER
  - TRAILHEAD SYMBOL
  - RAILROAD LINE
  - RAILROAD STATION
  - INSET AREA
  - STATE LINE
  - COUNTY LINE
  - SMOOTHED URBAN BOUNDARIES
  - CITY LIMITS
  - FERRY ROUTE AND RAMP
  - NARROW CREEK OR STREAM
  - WIDE RIVER OR CREEK
  - RIVER POND OR LAKE W/ ISLAND
  - DAM OR DAM WITH LOCK
  - WATERFALL
  - SWAMP
  - COMMUNITY
  - COUNTY SEAT
  - SCHOOL
  - COLLEGE OR UNIVERSITY
  - HOSPITAL
  - COAST GUARD STATION
  - CHURCH
  - CHURCH WITH CEMETERY
  - CEMETERY
  - PATROL STATION
  - CORRECTION OR PENAL INSTITUTION
  - QUARRY
  - MINE OR PIT
  - HIGHWAY GARAGE OR MAINT. YARD
  - HIGHWAY DIV. OR DIST. OFFICE
  - MILITARY POST
  - WEIGH STATION
  - FAIRGROUNDS
  - HISTORICAL SITE
  - POINTS OF INTEREST
  - POST OFFICE
  - STATE FOREST
  - LIGHTHOUSE
  - MOUNTAIN SUMMIT
  - MOUNTAIN GAP
  - OVERLOOK
  - REST AREA
  - VISITOR CTR/REST AREA
  - WELCOME CTR/REST AREA
  - AIRPORT
  - MILITARY AIRPORT
  - NATIONAL / STATE FOREST BOUNDARY
  - WILDLIFE REFUGE
  - NATIONAL / STATE PARK BOUNDARY
  - GAME LANDS BOUNDARY
  - MILITARY RESERVATION BOUNDARY
  - INDIAN RESERVATION BOUNDARY



## HOKE COUNTY NORTH CAROLINA BRIDGE LOCATION MAP

PREPARED BY THE  
 NORTH CAROLINA DEPARTMENT OF TRANSPORTATION  
 OPERATIONS PROGRAM MANAGEMENT UNIT - MAPPING SECTION  
 IN COOPERATION WITH THE  
 U.S. DEPARTMENT OF TRANSPORTATION  
 FEDERAL HIGHWAY ADMINISTRATION



NORTH CAROLINA PLANE COORDINATE SYSTEM  
 LAMBERT CONFORMAL CONIC PROJECTION  
 SHEET 1 OF 5