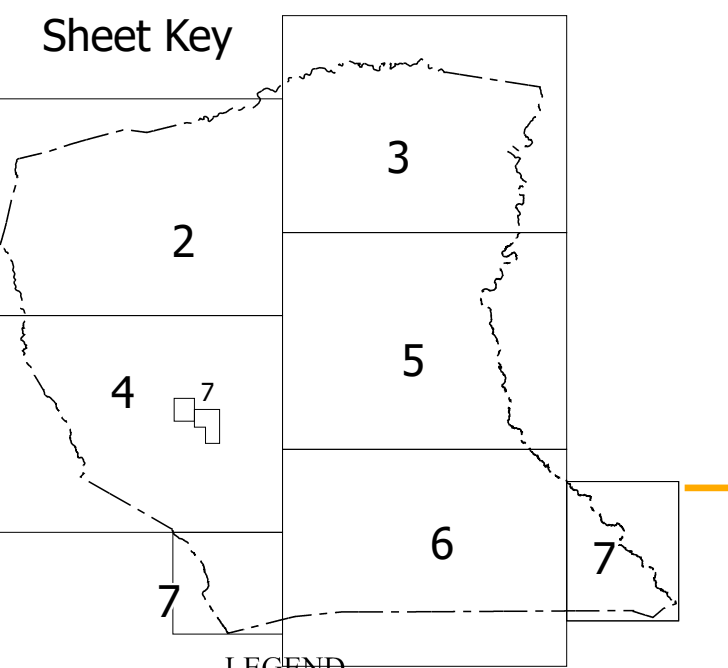
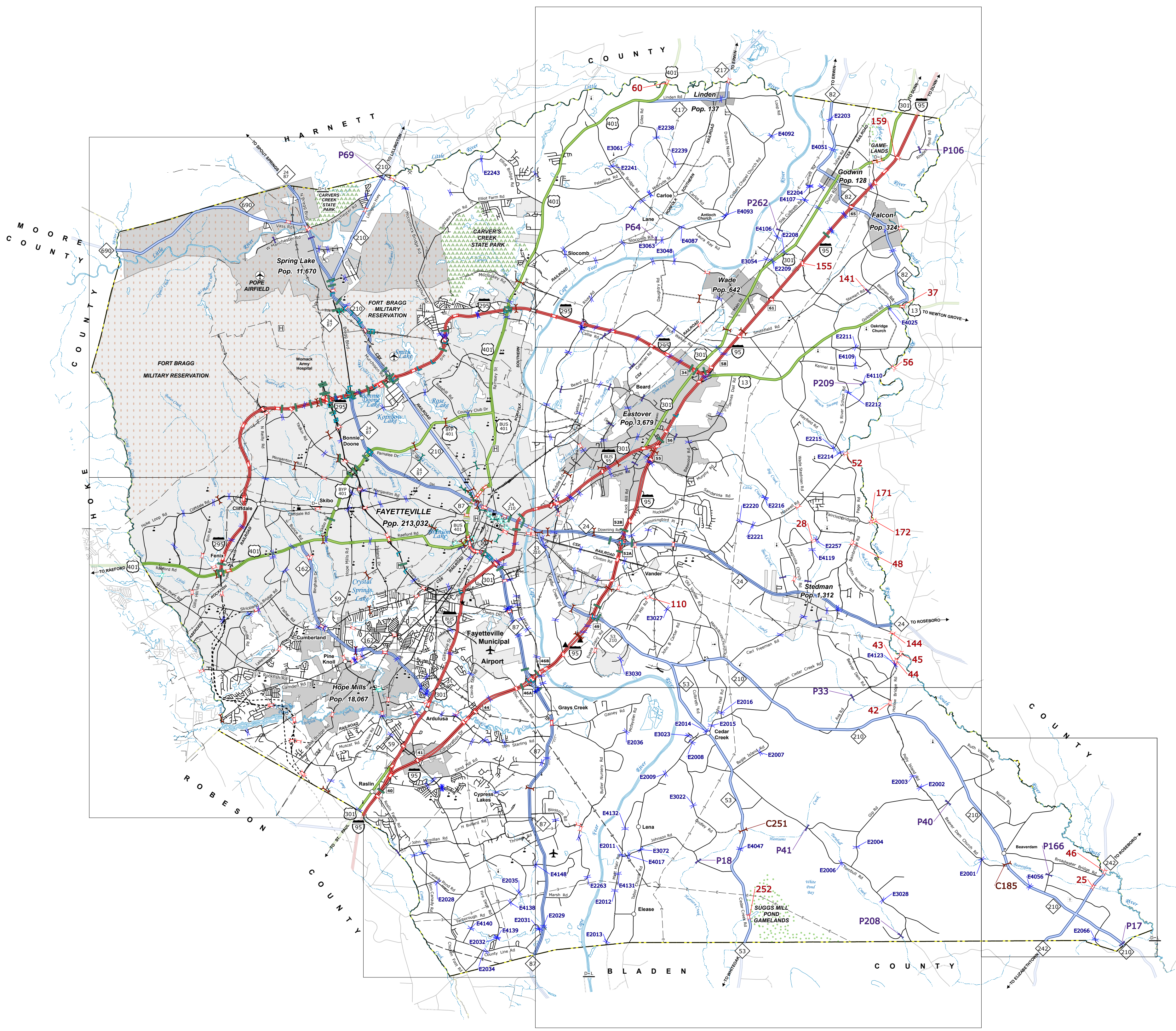
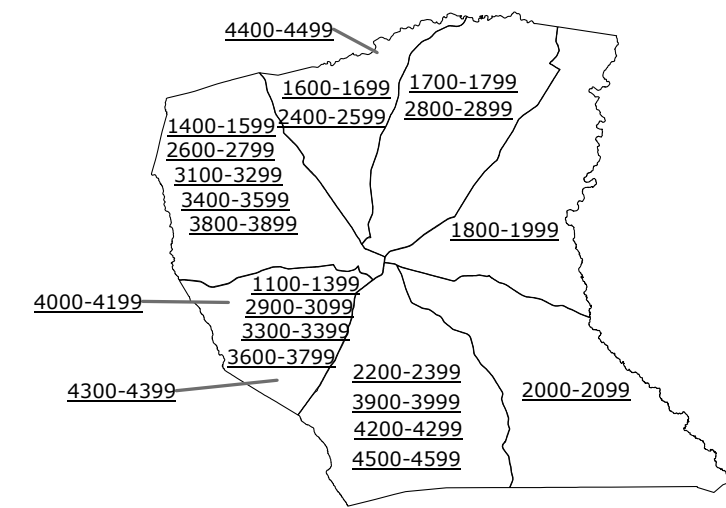


STATE OF NORTH CAROLINA. The North Carolina Department of Transportation (NCDOT) is not responsible for any errors or omissions on this map. The user assumes all liability for any use of this map. The user agrees to hold NCDOT harmless for any use of this map. The user agrees to indemnify and hold NCDOT harmless for any and all claims, damages, costs, and expenses, including reasonable attorneys' fees, arising out of or from the use of this map. This is the original version of this map or additional map products. Visit <http://www.ncdot.gov/transportation/Mapping/Products/Ordering.aspx>



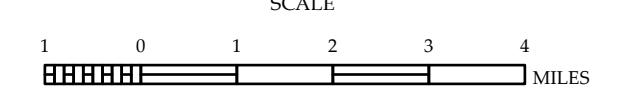
- LEGEND**
- INTERSTATE US NC Divided Hwy Undivided Hwy
 - BLUE BRIDGE PARKWAY
 - UNPAVED SURFACED ROAD
 - HARD SURFACED ROAD
 - NON-SYSTEM ROAD
 - PROVISIONALLY DRAWN ROAD
 - PROJECTED LOCATION
 - INTERSECTION DISTANCE
 - INTERSTATE HIGHWAY
 - U.S. NUMBERED HIGHWAY
 - N.C. NUMBERED HIGHWAY
 - U.S. NUMBERED BICYCLE ROUTE
 - N.C. NUMBERED BICYCLE ROUTE
 - INTERSTATE INTERCHANGE NUMBER
 - SECONDARY ROAD NUMBER
 - UTILITY LINES
 - RAILROAD LINE
 - RAILROAD STATION
 - INSET AREA
 - STATE LINE
 - COUNTY LINE
 - SMOOTHED URBAN BOUNDARIES
 - CITY LIMITS
 - FERRY ROUTE AND RAMP
 - NARROW CREEK OR STREAM
 - WIDE RIVER OR CREEK
 - RESERVOIR, POND OR LAKE W/ ISLAND
 - DAM OR DAM WITH LOCK
 - WATERFALL
 - SWAMP
 - COMMUNITY
 - COUNTY SEAT
 - SCHOOL
 - COLLEGE OR UNIVERSITY
 - HOSPITAL
 - COAST GUARD STATION
 - CHURCH WITH CEMETERY
 - CHURCH
 - CEMETERY
 - PATROL STATION
 - CORRECTION OR PENAL INSTITUTION
 - QUARRY
 - MINE OR PIT
 - HIGHWAY GARAGE OR MAINT. YARD
 - HIGHWAY DIV. OR DIST. OFFICE
 - MILITARY POST
 - WEIGH STATION
 - FAIRGROUNDS
 - HISTORICAL SITE
 - POINTS OF INTEREST
 - POST OFFICE
 - STATE FOREST
 - LIGHTHOUSE
 - MOUNTAIN SUMMIT
 - MOUNTAIN GAP
 - OVERLOOK
 - REST AREA
 - VISITOR CENTER REST AREA
 - WELCOME CENTER REST AREA
 - AIRPORT
 - MILITARY AIRPORT
 - NATIONAL / STATE FOREST BOUNDARY
 - WILDLIFE REFUGE
 - NATIONAL / STATE PARK BOUNDARY
 - GAME LANDS BOUNDARY
 - MILITARY RESERVATION BOUNDARY
 - INDIAN RESERVATION BOUNDARY

- BRIDGE
- CITY BRIDGE
- CITY SIGN
- "C" CITY CULVERT
- "C" CULVERT
- DRAW BRIDGE
- "D" PEDESTRIAN BRIDGE
- "E" NON-NBHS PIPE
- "F" FERRY RAMP
- "G" FEDERAL BRIDGE
- "H" NON-SYSTEM MAINT BY NCDOT
- "L" CANTILEVER SIGN
- "M" PRIVATE STRUCTURE
- "N" NCDOT OVERPASS STRUCTURE
- "O" PAVEMENT ON PILES
- "P" CITY PIPE
- "P" PIPE
- "R" RAILROAD BRIDGE
- "S" OVERHEAD SIGN
- "T" TUNNEL
- "U" PEDESTRIAN UNDERPASS
- "V" VEHICULAR UNDERPASS
- "W" PEDESTRIAN WALKWAY
- "Y" T-POLE SIGN



CUMBERLAND COUNTY NORTH CAROLINA BRIDGE LOCATION MAP

PREPARED BY THE
NORTH CAROLINA DEPARTMENT OF TRANSPORTATION
OPERATIONS PROGRAM MANAGEMENT UNIT - MAPPING SECTION
IN COOPERATION WITH THE
U.S. DEPARTMENT OF TRANSPORTATION
FEDERAL HIGHWAY ADMINISTRATION



NORTH CAROLINA PLANE COORDINATE SYSTEM
LAMBERT CONFORMAL CONIC PROJECTION
SHEET 1 OF 7

COPIES OF THIS MAP ARE AVAILABLE TO THE
PUBLIC AT NOMINAL COST. CONTACT US TO ORDER:
<http://www.ncdot.gov/transportation/Mapping/Products/Ordering.aspx>
(919) 844-4440