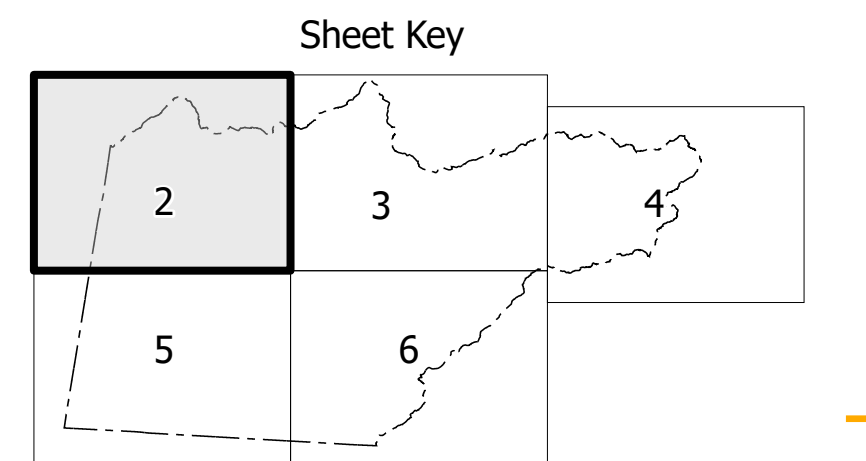
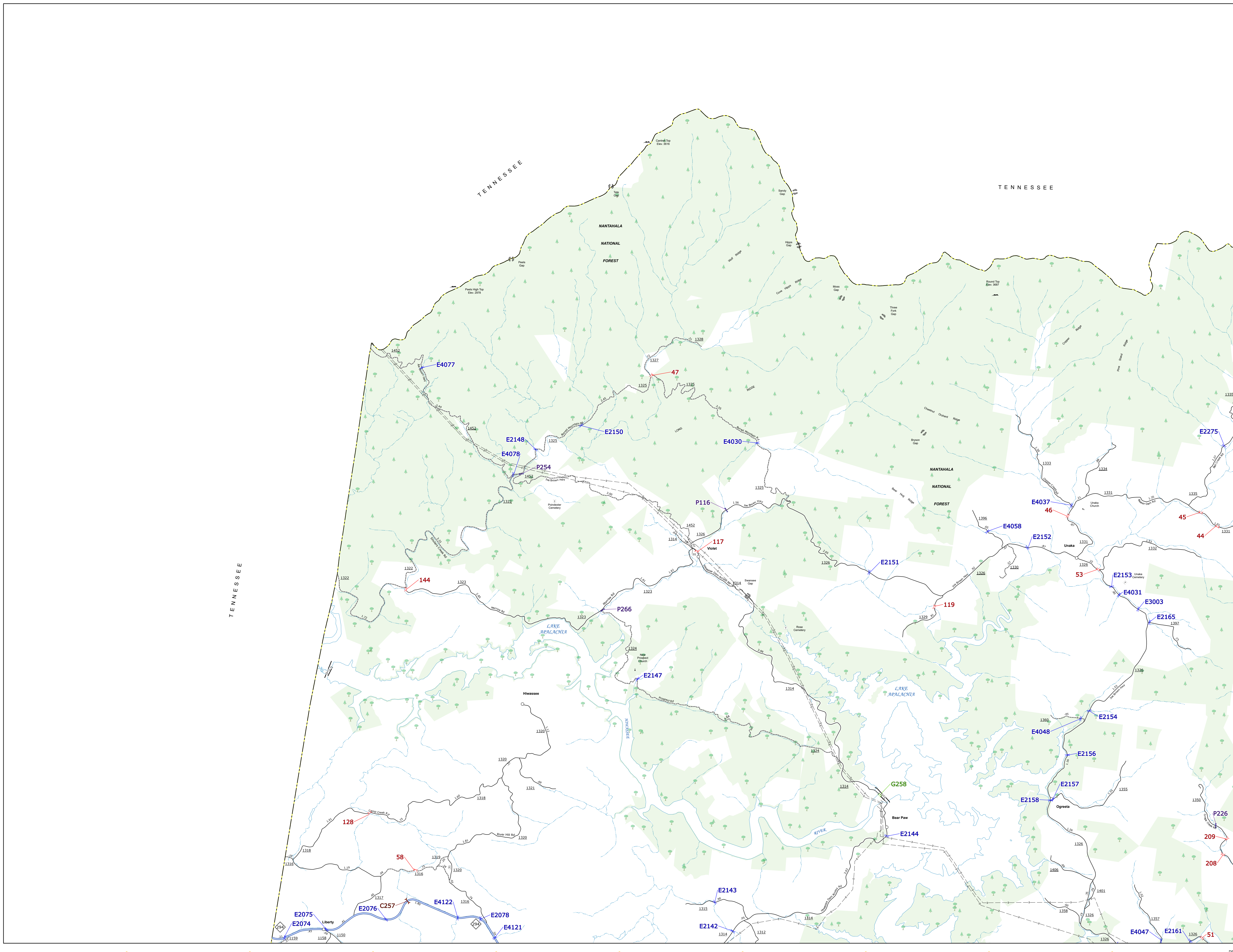


TERMS OF USE: The Mapping Section's goal is to provide the most accurate and current information possible. Map data is compiled from various sources and is not guaranteed to be 100% accurate. The user assumes all responsibility for any errors or omissions. The user agrees to hold the State of North Carolina harmless for any damages or liabilities resulting from the use of this map.

COPIES OF THIS MAP ARE AVAILABLE TO THE PUBLIC BY REQUESTING A COPY FROM THE NORTH CAROLINA DEPARTMENT OF TRANSPORTATION OPERATIONS PROGRAM MANAGEMENT UNIT - MAPPING SECTION, 100 SOUTH PARKWAY, RALEIGH, NC 27601. (919) 881-3330



- LEGEND**
- INTERSTATE US NC
 - US HIGHWAY
 - NC HIGHWAY
 - UNPAVED SURFACED ROAD
 - HARD SURFACE ROAD
 - NON-SYSTEM ROAD
 - PROVISIONALLY DRAWN ROAD
 - PROHIBITED ON STATE
 - INTERSECTION DISTANCE
 - INTERSTATE HIGHWAY
 - U.S. NUMBERED HIGHWAY
 - N.C. NUMBERED HIGHWAY
 - U.S. NUMBERED BICYCLE ROUTE
 - N.C. NUMBERED BICYCLE ROUTE
 - INTERSTATE INTERCHANGE NUMBER
 - SECONDARY ROAD NUMBER
 - CITY LINES
 - RAILROAD LINE
 - RAILROAD STATION
 - STATE LINE
 - COUNTY LINE
 - CITY LIMITS
 - FERRY ROUTE
 - NARROW CREEK OR STREAM
 - WIDE RIVER OR CREEK
 - RESERVOIR, POND OR LAKE W/ ISLAND
 - DAM OR DAM WITH LOCK
 - WATERFALL
 - SWAMP
 - COMMUNITY, TOWN OR CITY CENTER
 - COUNTY SEAT
 - SCHOOL
 - COLLEGE OR UNIVERSITY
 - HOSPITAL
 - COAST GUARD STATION
 - CEMETERY
 - CHURCH
 - CHURCH WITH CEMETERY
 - PATROL STATION
 - CORRECTION OR PENAL INSTITUTION
 - QUARRY
 - MINE OR PIT
 - HIGHWAY GARAGE OR MAINT. YARD
 - HIGHWAY DIV. OR DIST. OFFICE
 - MILITARY POST
 - WEIR STATION
 - FAIRGROUNDS
 - HISTORICAL SITE
 - POINTS OF INTEREST
 - STATE FOREST
 - LIGHTHOUSE
 - MOUNTAIN SUMMIT
 - OVERLOOK
 - REST AREA
 - VISITOR CENTER AREA
 - WELCOME CENTER AREA
 - MILITARY AIRPORT
 - HELIPORT
 - NATIONAL STATE FOREST BOUNDARY
 - WILDLIFE REFUGE
 - NATIONAL STATE PARK BOUNDARY
 - GAME LANDS BOUNDARY
 - MILITARY RESERVATION BOUNDARY
 - INDIAN RESERVATION BOUNDARY

MS YODOR

CHEROKEE COUNTY NORTH CAROLINA BRIDGE LOCATION MAP

PREPARED BY THE
NORTH CAROLINA DEPARTMENT OF TRANSPORTATION
OPERATIONS PROGRAM MANAGEMENT UNIT - MAPPING SECTION
IN COOPERATION WITH THE
U.S. DEPARTMENT OF TRANSPORTATION
FEDERAL HIGHWAY ADMINISTRATION

SCALE
0 1 2 MILES

NORTH CAROLINA PLANE COORDINATE SYSTEM
LAMBERT CONFORMAL CONIC PROJECTION