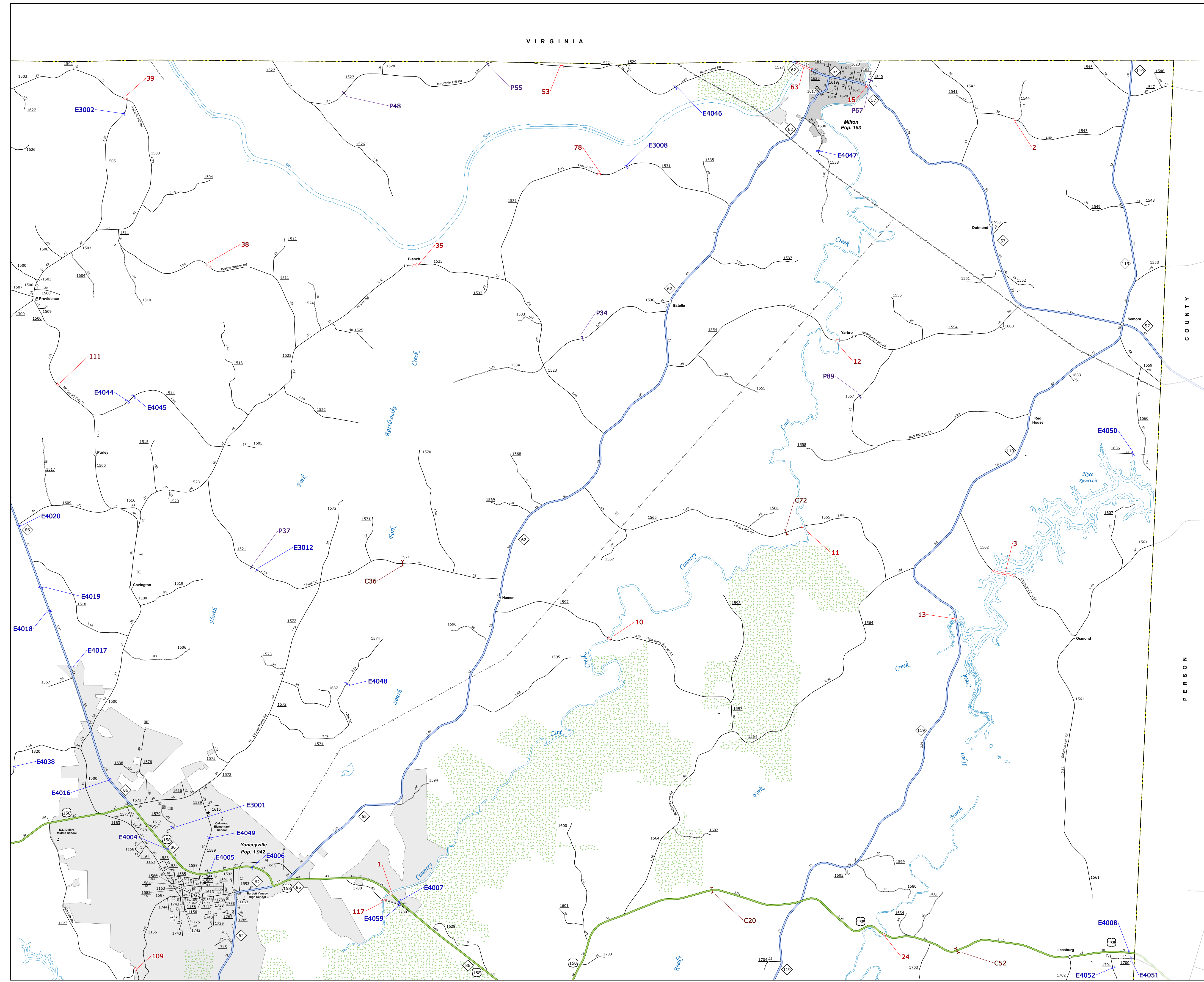
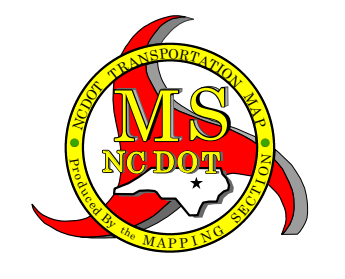
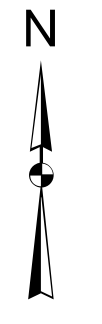


TERMS OF USE: This map is provided as a service to the public and is not intended to be used as a legal document. The user assumes all responsibility for any use of this map. This map is provided as a service to the public and is not intended to be used as a legal document. The user assumes all responsibility for any use of this map. This map is provided as a service to the public and is not intended to be used as a legal document. The user assumes all responsibility for any use of this map.



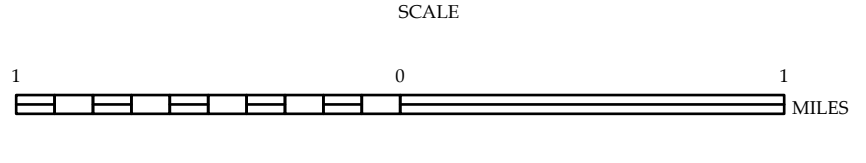
LEGEND

- INTERSTATE US NC Divided Hwy
- Blue Ridge Parkway
- Unimproved Road
- Hard Surfaced Road
- Non-System Road
- Proposed/Under Construction Road
- Projected Location
- Intersection Distance
- Interstate Highway
- U.S. Numbered Highway
- N.C. Numbered Highway
- U.S. Numbered Bicycle Route
- N.C. Numbered Bicycle Route
- Interstate Interchange Number
- Secondary Road Number
- Utility Lines
- Railroad Line
- Railroad Station
- Inset Area
- State Line
- County Line
- Smoothed Urban Boundaries
- City Limits
- Ferry Route and Ramp
- Narrow Creek or Stream
- Wide River or Creek
- Reservoir, Pond or Lake
- Dam or Dam with Lock
- Waterfall
- Swamp
- Community
- County Seat
- School
- College or University
- Hospital
- Coast Guard Station
- Church
- Church with Cemetery
- Cemetery
- Patrol Station
- Correction or Penal Institution
- Quarry
- Mine or Pit
- Highway Garage or Maintenance Yard
- Highway Div. or Dist. Office
- Military Post
- Weight Station
- Fairgrounds
- Points of Interest
- Post Office
- State Forest
- Lighthouse
- Mountain Summit
- Mountain Gap
- Overlook
- West Area
- Visitor Center Area
- Welcome Center Area
- Airport
- Military Airport
- National/State Forest Boundary
- Wildlife Refuge
- National/State Park Boundary
- Game Lands Boundary
- Military Reservation Boundary
- Indian Reservation Boundary



CASWELL COUNTY NORTH CAROLINA BRIDGE LOCATION MAP

PREPARED BY THE
NORTH CAROLINA DEPARTMENT OF TRANSPORTATION
OPERATIONS PROGRAM MANAGEMENT UNIT - MAPPING SECTION
IN COOPERATION WITH THE
U.S. DEPARTMENT OF TRANSPORTATION
FEDERAL HIGHWAY ADMINISTRATION



NORTH CAROLINA PLANE COORDINATE SYSTEM
LAMBERT CONFORMAL CONIC PROJECTION