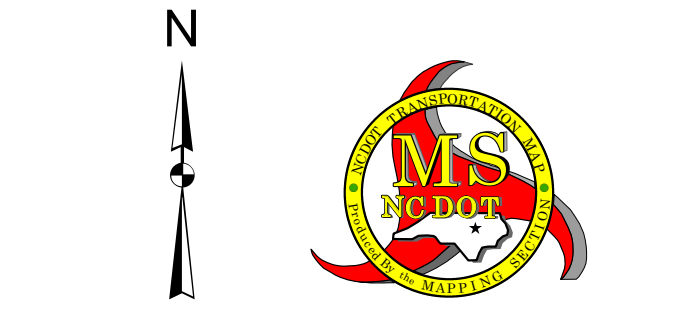


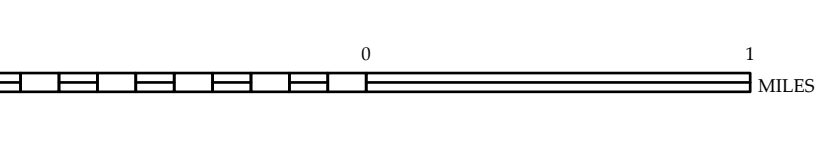
- BRIDGE
- CITY BRIDGE
- CITY SPAN
- CITY CULVERT
- CITY OVERPASS
- ROAD BRIDGE
- PEDESTRIAN BRIDGE
- NON-STRUCTURAL BRIDGE
- NON-STRUCTURAL SPAN
- FEDERAL BRIDGE
- NON-STRUCTURAL SPAN BY NDOT
- CANTILEVER SPAN
- PRIVATE STRUCTURE
- BRIDGE OVERPASS STRUCTURE
- CITY PIPE
- ROAD BRIDGE
- OVERHEAD BRIDGE
- TUNNEL
- PEDESTRIAN UNDERPASS
- VEHICULAR UNDERPASS
- PEDESTRIAN WALKWAY
- POLE SIGN

- ### LEGEND
- INTERSTATE US
  - INTERSTATE NC
  - Divided Hwy
  - Undivided Hwy
  - BLUE RIDGE PARKWAY
  - UNPAVED SURFACED ROAD
  - HARD SURFACED ROAD
  - NON-FEET ROAD
  - PROVISIONALLY DRAWN ROAD
  - PROJECTED LOCATION
  - INTERSECTION DISTANCE
  - INTERSTATE HIGHWAY
  - U.S. NUMBERED HIGHWAY
  - N.C. NUMBERED HIGHWAY
  - U.S. NUMBERED BICYCLE ROUTE
  - N.C. NUMBERED BICYCLE ROUTE
  - INTERSTATE INTERCHANGE NUMBER
  - SECONDARY ROAD NUMBER
  - UTILITY LINES
  - RAILROAD LINE
  - RAILROAD STATION
  - INSET AREA
  - STATE LINE
  - COUNTY LINE
  - SMOOTHED URBAN BOUNDARIES
  - CITY LIMITS
  - FERRY ROUTE AND RAMP
  - NARROW CREEK OR STREAM
  - WIDE RIVER OR CREEK
  - RESERVOIR, POND OR LAKE W/ ISLAND
  - DAM OR DAM WITH LOCK
  - WATERFALL
  - SWAMP
  - COMMUNITY
  - COUNTY SEAT
  - SCHOOL
  - COLLEGE OR UNIVERSITY
  - HOSPITAL
  - COAST GUARD STATION
  - CHURCH
  - CHURCH WITH CEMETERY
  - CEMETERY
  - PATROL STATION
  - CORRECTION OR PENAL INSTITUTION
  - QUARRY
  - MINE OR PIT
  - HIGHWAY GARAGE OR MAINT. YARD
  - HIGHWAY DITCH OR DIST. OFFICE
  - MILITARY POST
  - WEATHER STATION
  - FAIRGROUNDS
  - HISTORICAL SITE
  - POINTS OF INTEREST
  - POST OFFICE
  - STATE FOREST
  - LIGHTHOUSE
  - MOUNTAIN SUMMIT
  - MOUNTAIN GAP
  - OVERLOOK
  - REST AREA
  - VISITOR CENTER AREA
  - WELCOME CENTER AREA
  - AIRPORT
  - MILITARY AIRPORT
  - NATIONAL STATE FOREST BOUNDARY
  - WILDLIFE REFUGE
  - NATIONAL STATE PARK BOUNDARY
  - GAME LANDS BOUNDARY
  - MILITARY RESERVATION BOUNDARY
  - INDIAN RESERVATION BOUNDARY



## BRUNSWICK COUNTY NORTH CAROLINA BRIDGE LOCATION MAP

PREPARED BY THE  
NORTH CAROLINA DEPARTMENT OF TRANSPORTATION  
OPERATIONS PROGRAM MANAGEMENT UNIT - MAPPING SECTION  
IN COOPERATION WITH THE  
U.S. DEPARTMENT OF TRANSPORTATION  
FEDERAL HIGHWAY ADMINISTRATION



SCALE  
NORTH CAROLINA PLANE COORDINATE SYSTEM  
LAMBERT CONFORMAL CONIC PROJECTION

THIS MAP IS THE PROPERTY OF THE STATE OF NORTH CAROLINA. IT IS TO BE USED ONLY FOR THE PURPOSES FOR WHICH IT WAS DESIGNED. IT IS NOT TO BE USED FOR ANY OTHER PURPOSES WITHOUT THE WRITTEN PERMISSION OF THE STATE OF NORTH CAROLINA. THE STATE OF NORTH CAROLINA DOES NOT WARRANT THE ACCURACY OF THE INFORMATION CONTAINED HEREIN. THE INFORMATION CONTAINED HEREIN IS FOR INFORMATIONAL PURPOSES ONLY. THE STATE OF NORTH CAROLINA DOES NOT WARRANT THE ACCURACY OF THE INFORMATION CONTAINED HEREIN. THE INFORMATION CONTAINED HEREIN IS FOR INFORMATIONAL PURPOSES ONLY.