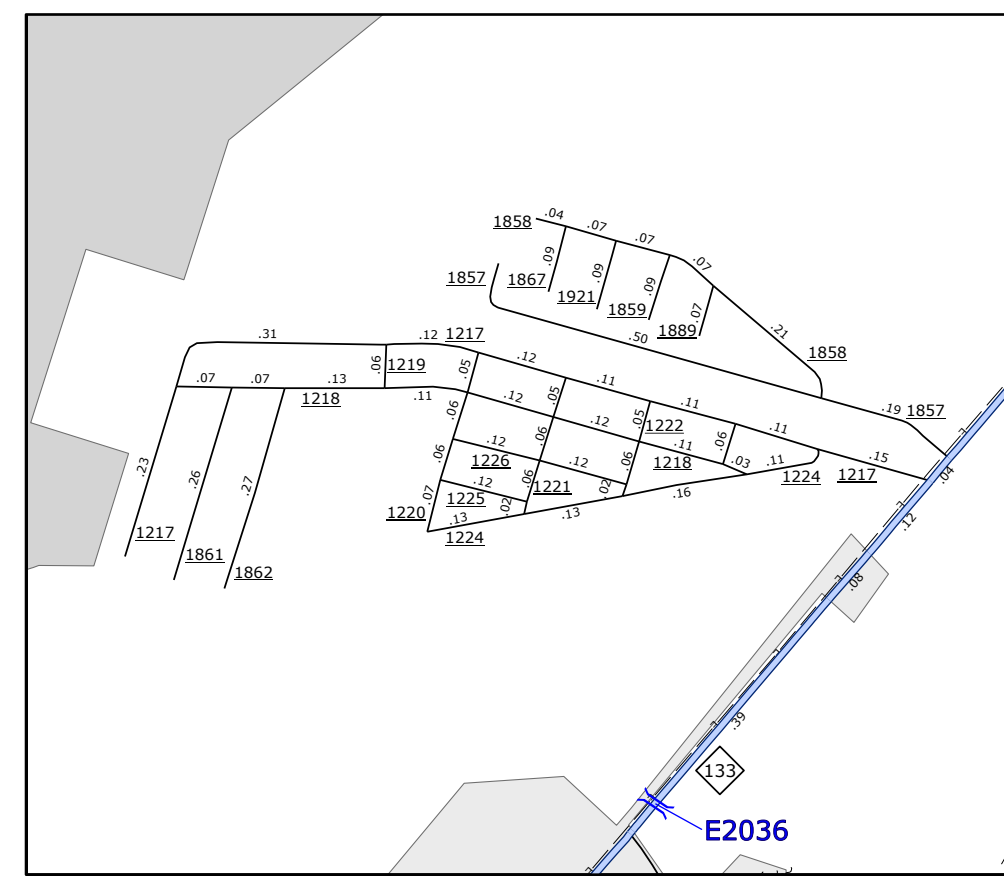
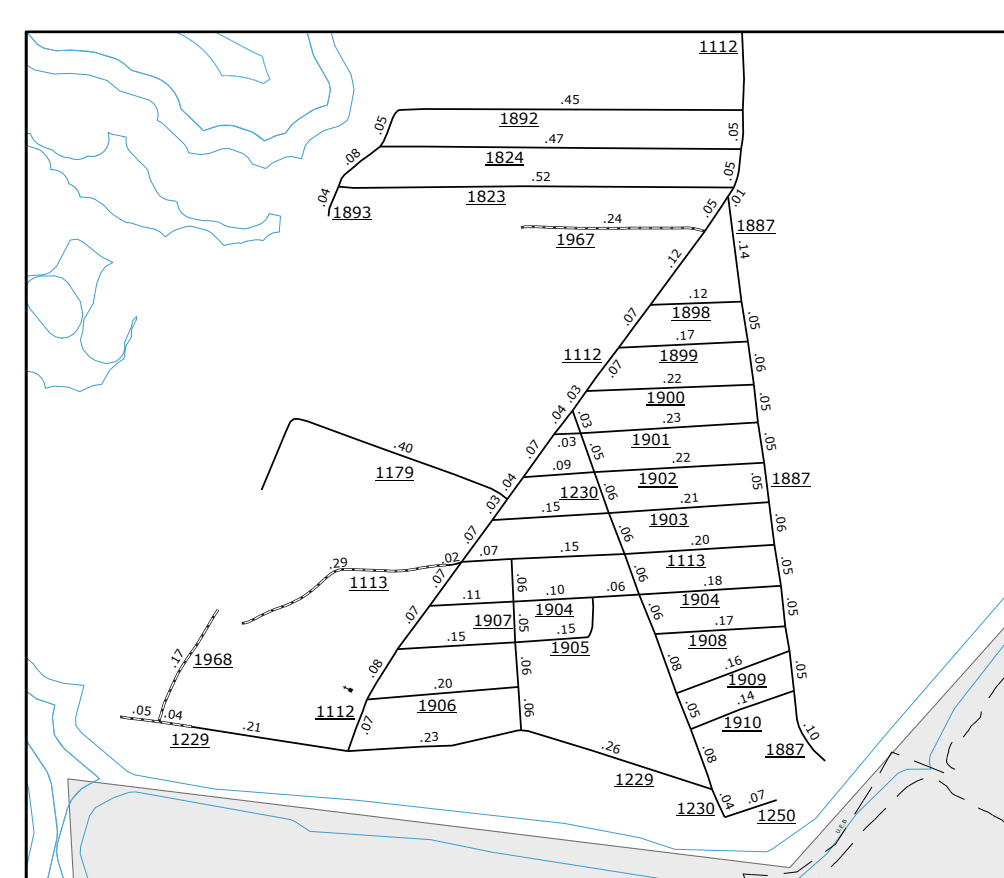


- BRIDGE
- CITY BRIDGE
- CITY SIGN
- CITY CULVERT
- CITY STREET
- DRAW BRIDGE
- NON-SYSTEM ROAD
- FERRY RAMP
- FEDERAL BRIDGE
- NON-SYSTEM MAINT BY NCDOT
- CANTILEVER SIGN
- PERMANENT STRUCTURE
- NC DOT OVERPASS STRUCTURE
- NC DOT OVERPASS
- CITY PIPE
- PIPE
- RAILROAD BRIDGE
- OVERHEAD SIGN
- TUNNEL
- FEDERATION UNDERPASS
- VEHICULAR UNDERPASS
- FEDERATION WALKWAY
- POLE SIGN

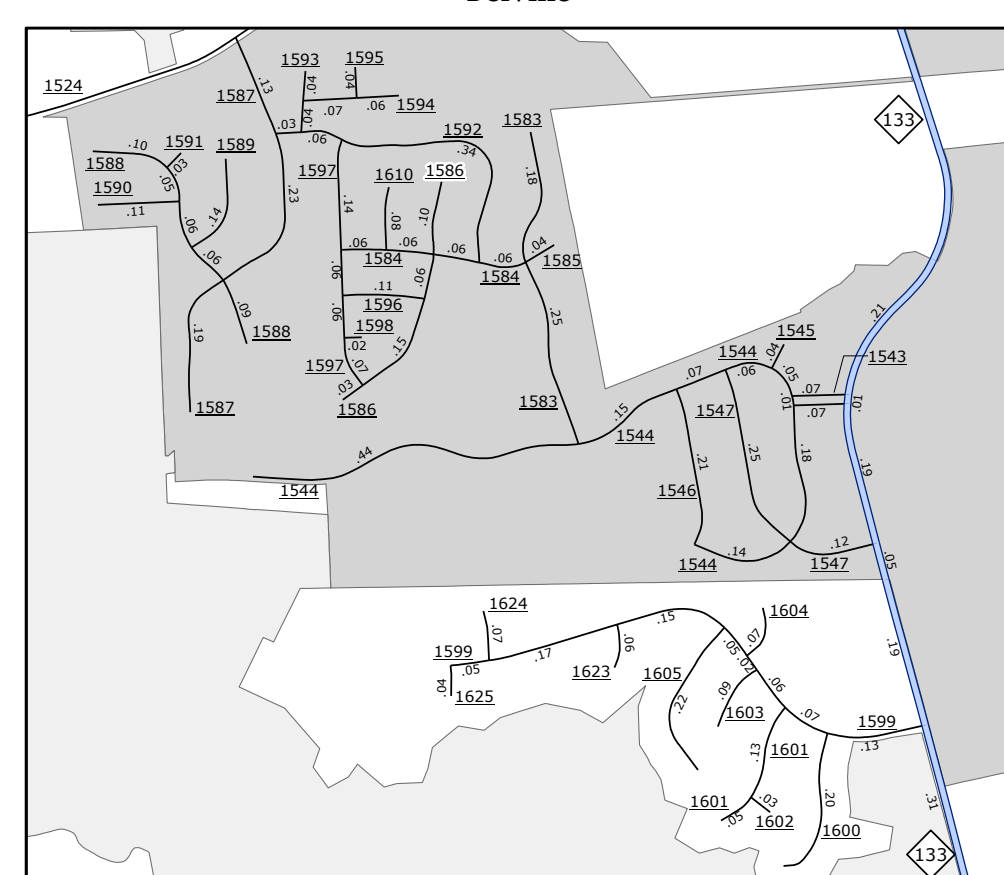
Seapines



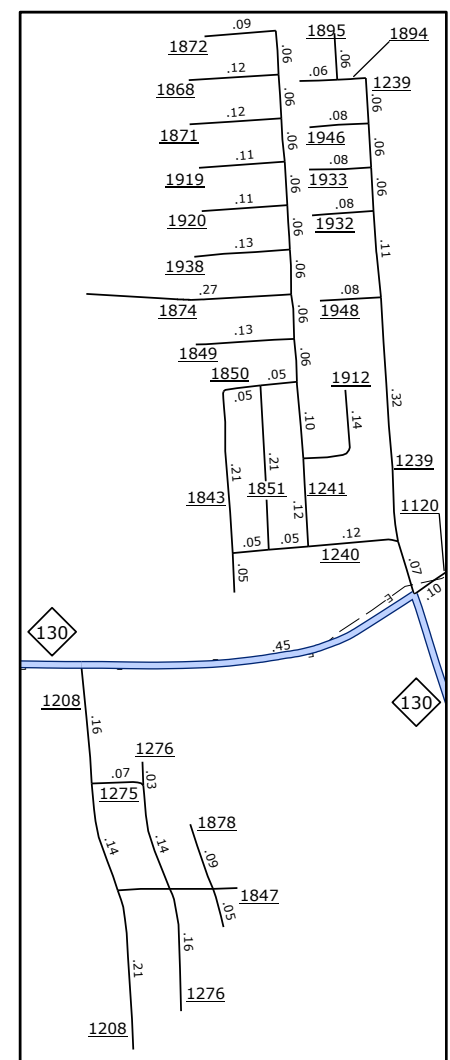
Sunset Harbor



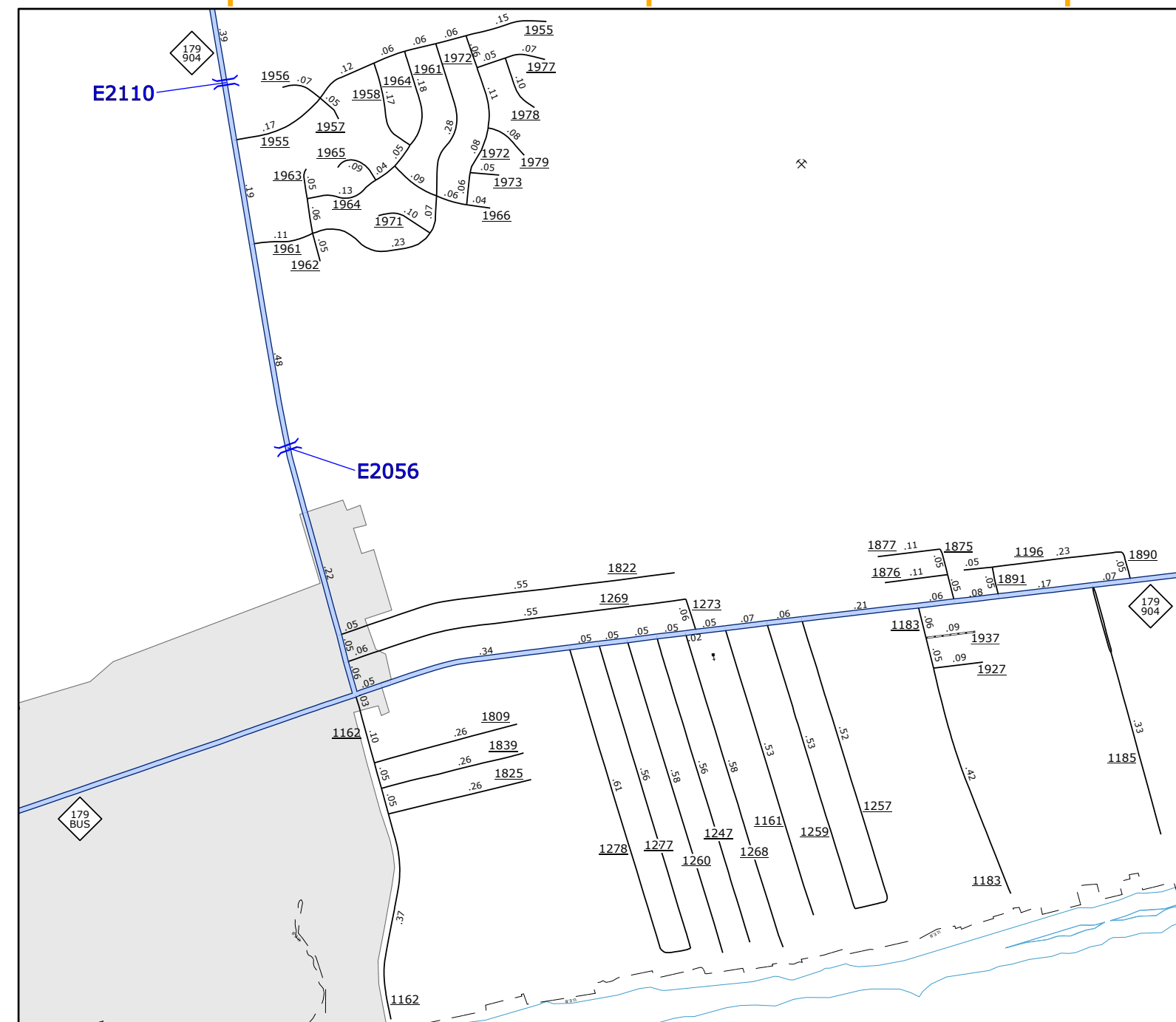
Belville



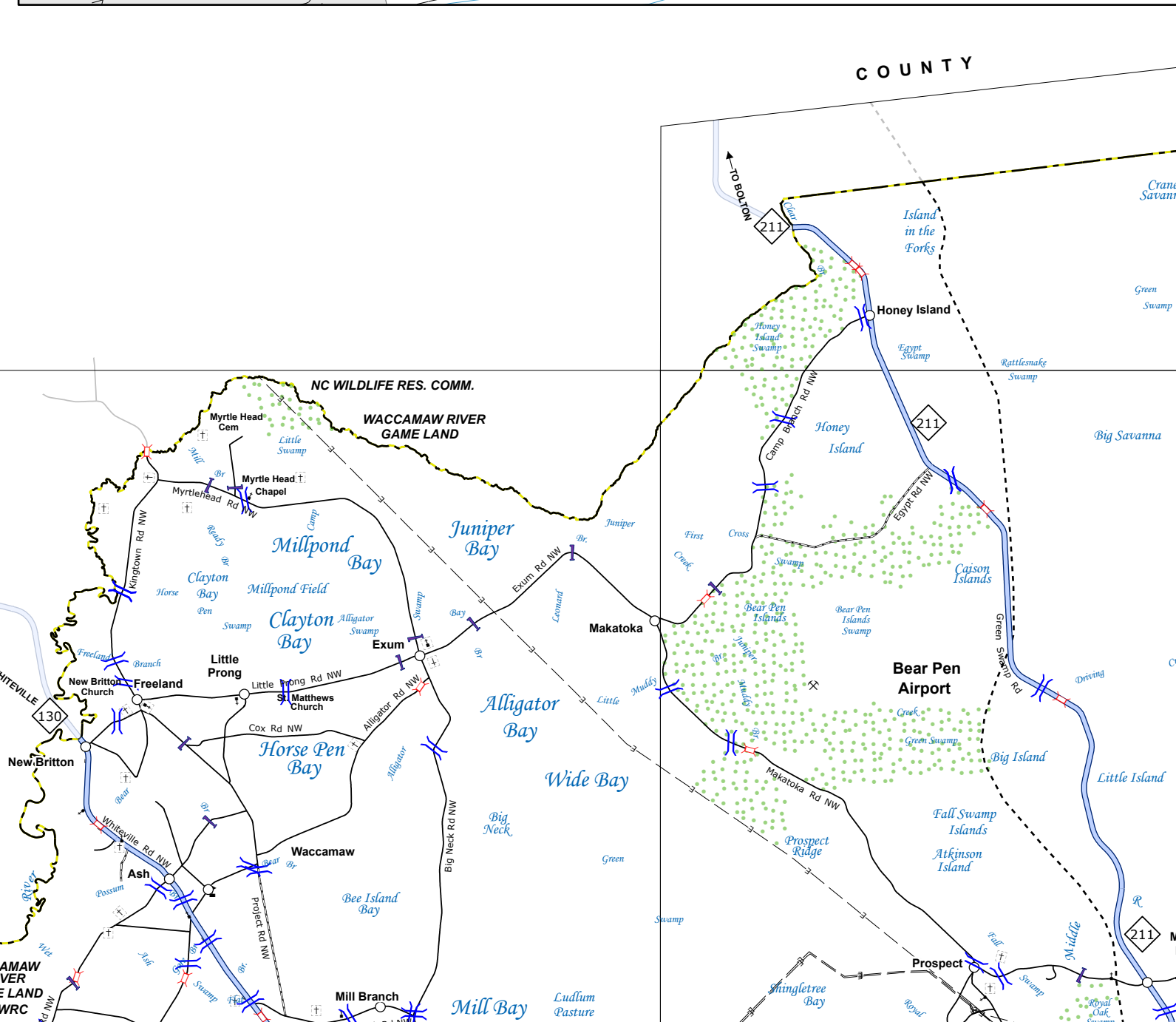
Ocean View Ave



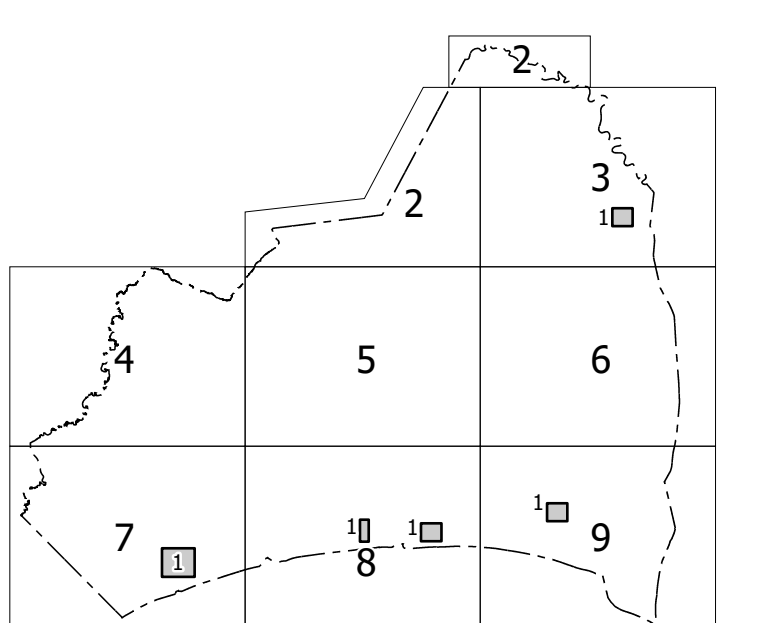
E2110



E2056

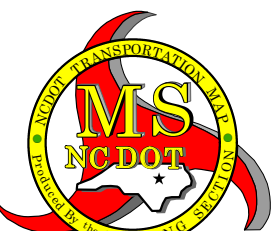
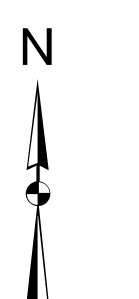


Sheet Key



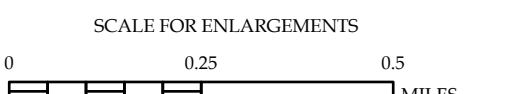
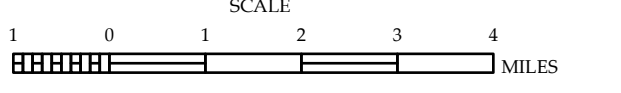
LEGEND

- INTERSTATE US NC Divided Hwy Undivided Hwy
- BLVD PARKWAY
- UNPAVED SURFACE ROAD
- RAID ROAD
- NON-SYSTEM ROAD
- PROVISIONAL DRAIN ROAD
- PROJECTED ACTION
- INTERSECTION DISTANCE
- INTERSTATE HIGHWAY
- U.S. NUMBERED HIGHWAY
- N.C. NUMBERED HIGHWAY
- N.C. NUMBERED BICYCLE ROUTE
- INTERSTATE INTERCHANGE NUMBER
- SECONDARY ROAD NUMBER
- UTILITY LINES
- RAILROAD LINE
- RAILROAD STATION
- INSET AREA
- STATE LINE
- COUNTY LINE
- SMOOTHED BOUNDARIES
- CITY LIMITS
- FERRY ROUTE AND DAM
- NARROW CREEK OR STREAM
- WIDE RIVER OR CREEK
- RESERVOIR, POND OR LAKE W/ ISLAND
- DAM OR DAM WITH LOCK
- WATERFALL
- SWAMP
- COMMUNITY
- FOREST
- SCHOOL
- COLLEGE OR UNIVERSITY
- HOSPITAL
- COAST GUARD STATION
- CHURCH
- CHURCH WITH CEMETERY
- CEMETERY
- PARK STATION
- CORRECTION OR PENAL INSTITUTION
- SQUARE
- MINE OR PIT
- HEAVY GARAGE OR MAINT YARD
- HIGHWAY DIV. OR DIST. OFFICE
- MILITARY POST
- WEIGH STATION
- POST OFFICE
- POST OFFICE
- STATE FOREST
- LANDMARK
- MOUNTAIN SUMMIT
- MOUNTAIN CAP
- OVERLOOK
- REST AREA
- VISITOR CTR REST AREA
- WELCOME CTR REST AREA
- AIRPORT
- MILITARY AIRPORT
- NATIONAL STATE FOREST BOUNDARY
- WILDLIFE REFUGE
- NATIONAL STATE PARK BOUNDARY
- GAME LANDS BOUNDARY
- MILITARY RESERVATION BOUNDARY
- INDIAN RESERVATION BOUNDARY



BRUNSWICK COUNTY NORTH CAROLINA BRIDGE LOCATION MAP

PREPARED BY THE
NORTH CAROLINA DEPARTMENT OF TRANSPORTATION
OPERATIONS PROGRAM MANAGEMENT UNIT - MAPPING SECTION
IN COOPERATION WITH THE
U.S. DEPARTMENT OF TRANSPORTATION
FEDERAL HIGHWAY ADMINISTRATION



COPIES OF THIS MAP ARE AVAILABLE TO THE PUBLIC AT NOMINAL COST. CONTACT US TO ORDER: mapscop@ncdot.gov or <http://www.ncdot.gov/resources/State-Mapping/Plans/Ordering-Maps.aspx>

TERMS OF USE: The Mapping Section's goal is to provide the most accurate and current information possible. Map data is compiled from numerous sources with varying dates of publication and map accuracy standards. As a result, the accuracy, currency, and completeness of the data provided will vary. The North Carolina Department of Transportation shall not be held liable for any errors in the map data. This map cannot be construed to be a legal document. The information shown on this map was last updated in June 2024. For digital copies of the map or additional map products, visit <https://connect.ncdot.gov/resources/State-Mapping>