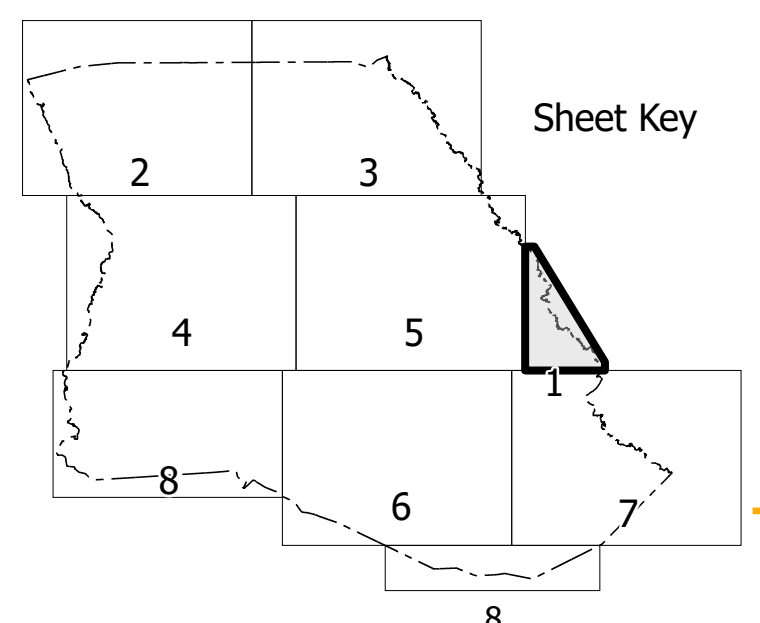
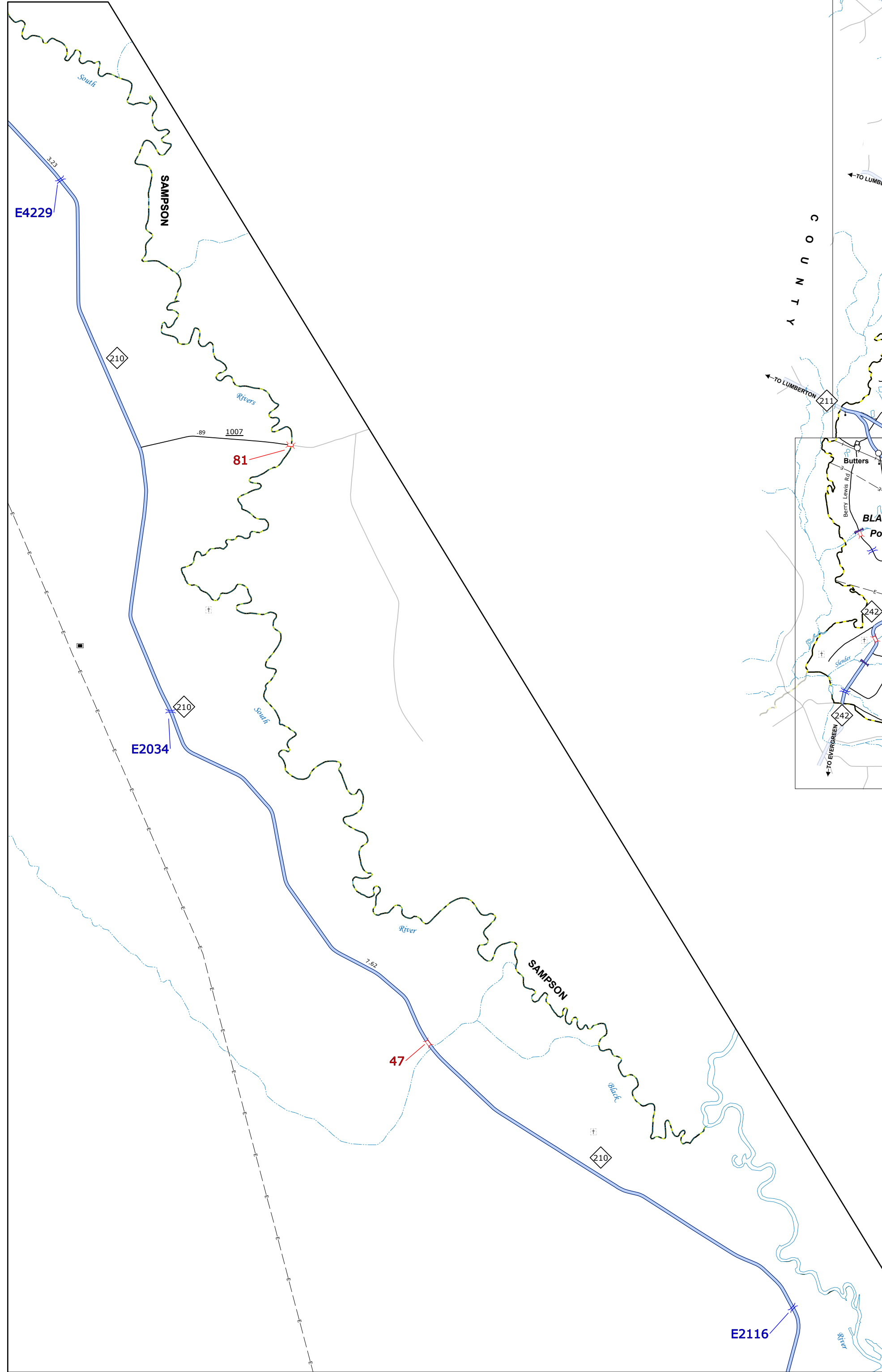
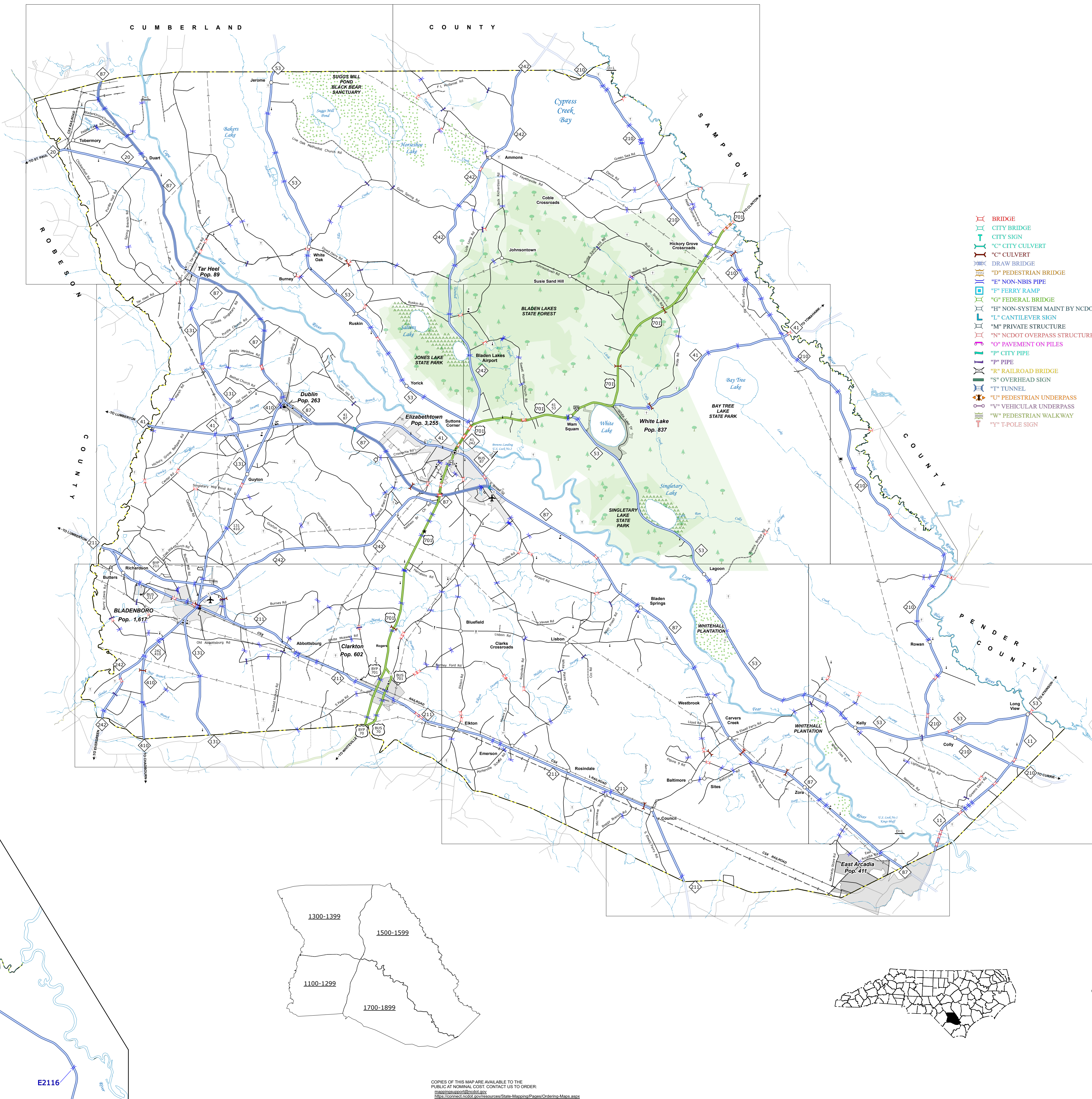


TERMS OF USE: The Mapping Section's goal is to provide the most accurate and current information possible. Map data is compiled from numerous sources with varying degrees of publication and map accuracy standards. As a result, the accuracy, currency and completeness of the information shown on this map cannot be guaranteed. The information shown on this map was last updated in July 2024. For the latest information, please contact the Mapping Section at (919) 833-8480.



- LEGEND**
- BRIDGE
 - CITY BRIDGE
 - CITY SIGN
 - CITY CULVERT
 - "C" CULVERT
 - DRAW BRIDGE
 - "D" PEDESTRIAN BRIDGE
 - "E" NON-NBIS PIPE
 - "F" FERRY RAMP
 - "G" FEDERAL BRIDGE
 - "H" NON-SYSTEM MAINT BY NCDOT
 - "I" CANTILEVER SIGN
 - "M" PRIVATE STRUCTURE
 - "N" NCDOT OVERPASS STRUCTURE
 - "O" PAVEMENT ON PILES
 - "P" CITY PIPE
 - "R" RAILROAD BRIDGE
 - "S" OVERHEAD SIGN
 - "T" TUNNEL
 - "U" PEDESTRIAN UNDERPASS
 - "V" VEHICULAR UNDERPASS
 - "W" PEDESTRIAN WALKWAY
 - "Y" T-POLE SIGN

- LEGEND**
- INTERSTATE US NC
 - Divided Hwy
 - Undivided Hwy
 - BLUE RIDGE PARKWAY
 - UNPAVED SURFACED ROAD
 - HARD SURFACED ROAD
 - NON-SYSTEM ROAD
 - PROVISIONALLY DRAWN ROAD
 - PROJECTED LOCATION
 - INTERSECTION DISTANCE
 - INTERSTATE HIGHWAY
 - U.S. NUMBERED HIGHWAY
 - U.S. NUMBERED HIGHWAY
 - U.S. NUMBERED BICYCLE ROUTE
 - N.C. NUMBERED BICYCLE ROUTE
 - INTERSTATE INTERCHANGE NUMBER
 - SECONDARY ROAD NUMBER
 - RAILROAD LINE
 - RAILROAD STATION
 - INSET AREA
 - STATE LINE
 - COUNTY LINE
 - SMOOTHED URBAN BOUNDARIES
 - CITY LIMITS
 - FERRY ROUTE AND RAMP
 - NARROW CREEK OR STREAM
 - WIDE RIVER OR CREEK
 - RESERVOIR, POND OR LAKE W/ ISLAND
 - DAM OR DAM WITH LOCK
 - WATERFALL
 - SWAMP
 - COMMUNITY
 - COUNTY SEAT
 - SCHOOL
 - COLLEGE OR UNIVERSITY
 - HOSPITAL
 - COAST GUARD STATION
 - CHURCH
 - CHURCH WITH CEMETERY
 - CEMETERY
 - PATROL STATION
 - CORRECTION OR PENAL INSTITUTION
 - QUARRY
 - MINE OR PIT
 - HIGHWAY GARAGE OR MAINT. YARD
 - HIGHWAY DIV. OR DIST. OFFICE
 - MILITARY POST
 - WEIGH STATION
 - FAIRGROUNDS
 - HISTORICAL SITE
 - POINTS OF INTEREST
 - POST OFFICE
 - STATE FOREST
 - LIGHTHOUSE
 - MOUNTAIN SUMMIT
 - MOUNTAIN GAP
 - OVERLOOK
 - REST AREA
 - VISITOR CTR/REST AREA
 - WELCOME CTR/REST AREA
 - AIRPORT
 - MILITARY AIRPORT
 - NATIONAL / STATE FOREST BOUNDARY
 - WILDLIFE REFUGE
 - NATIONAL / STATE PARK BOUNDARY
 - GAME LANDS BOUNDARY
 - MILITARY RESERVATION BOUNDARY
 - INDIAN RESERVATION BOUNDARY

**BLADEN COUNTY
NORTH CAROLINA
BRIDGE LOCATION MAP**

PREPARED BY THE
NORTH CAROLINA DEPARTMENT OF TRANSPORTATION
OPERATIONS PROGRAM MANAGEMENT UNIT - MAPPING SECTION
IN COOPERATION WITH THE
U.S. DEPARTMENT OF TRANSPORTATION
FEDERAL HIGHWAY ADMINISTRATION

SCALE
1 0 1 2 3 4
MILES

SCALE FOR ENLARGEMENTS
1 0 1
MILES

NORTH CAROLINA PLANE COORDINATE SYSTEM
LAMBERT CONFORMAL CONIC PROJECTION

DIVISION 6 DISTRICT 3 BLADEN COUNTY NORTH CAROLINA FIPS 01 OF 6

COPIES OF THIS MAP ARE AVAILABLE TO THE PUBLIC AT NOMINAL COST. CONTACT US TO ORDER:
<http://www.ncdot.gov/transportation/operations/Mapping/Pages/Ordering-Maps.aspx>
 (919) 833-8480